

IMPACTS FOR D7 through Sunday

Winds – MODERATE

Storm Surge – LOW

Rainfall/Flash Flooding – MODERATE

Tornadoes – LOW

Waves - MODERATE

INVEST AL92 BRIEFING

8:00 AM EST

Tuesday, July 28, 2020

Prepared by:

Scott Stripling

*Tropical Analysis and Forecast Branch
NWS National Hurricane Center*





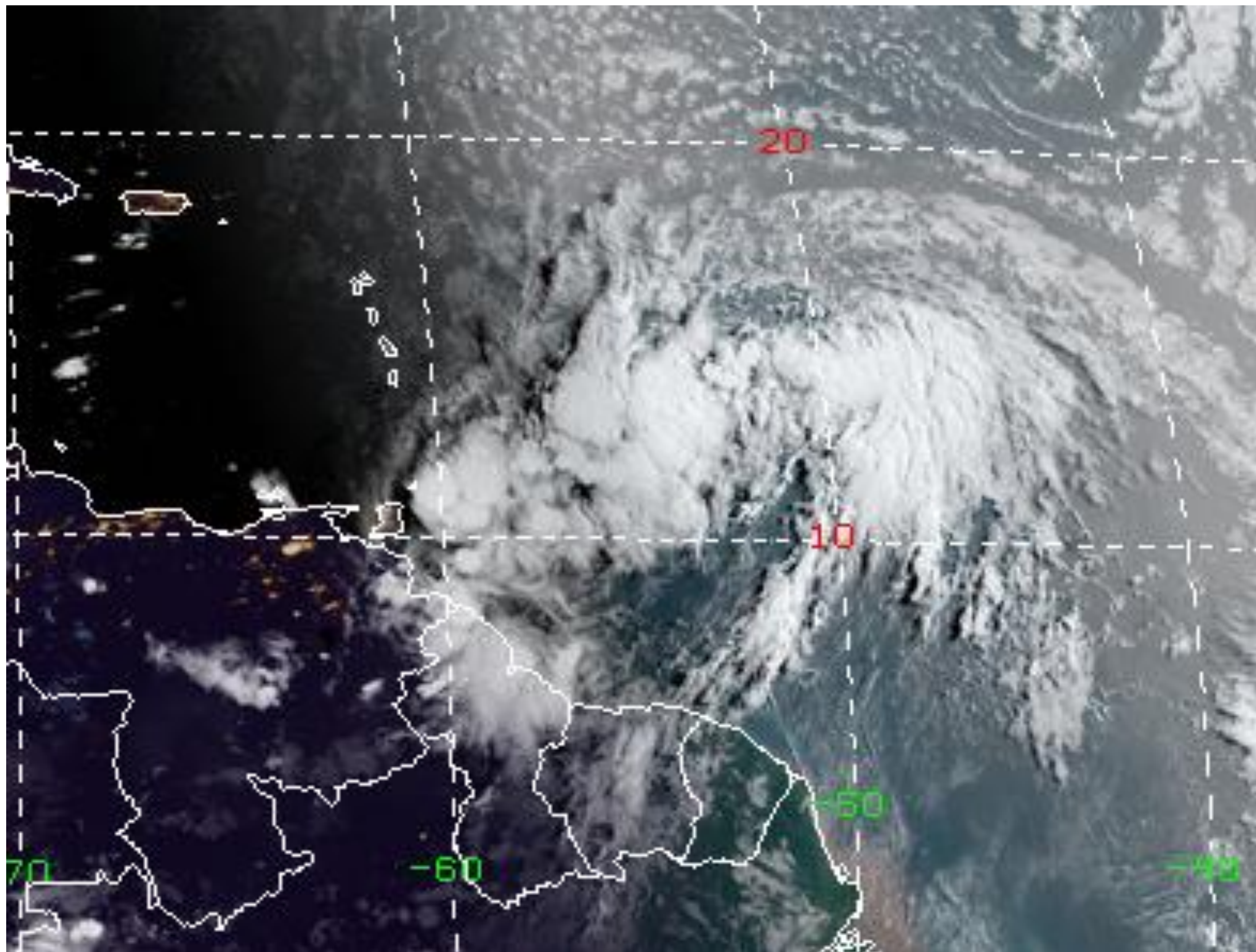
- Tropical wave with broad elongated surface low, AL92, has crossed 50W and likely to develop into T.D. or T.S. during next few days.
- Broad zone of easterly winds and large wave field of 8 ft and higher seas will accompany the northern semicircle of this system for next several days
- Interaction with an upper level trough as it moves across the E and NE Caribbean likely to produce pulses of strong thunderstorms and very heavy rainfall across the NE Caribbean and adjacent waters

Graphical Overview

Invest AL92



Tropical Analysis and Forecast Branch
NWS National Hurricane Center



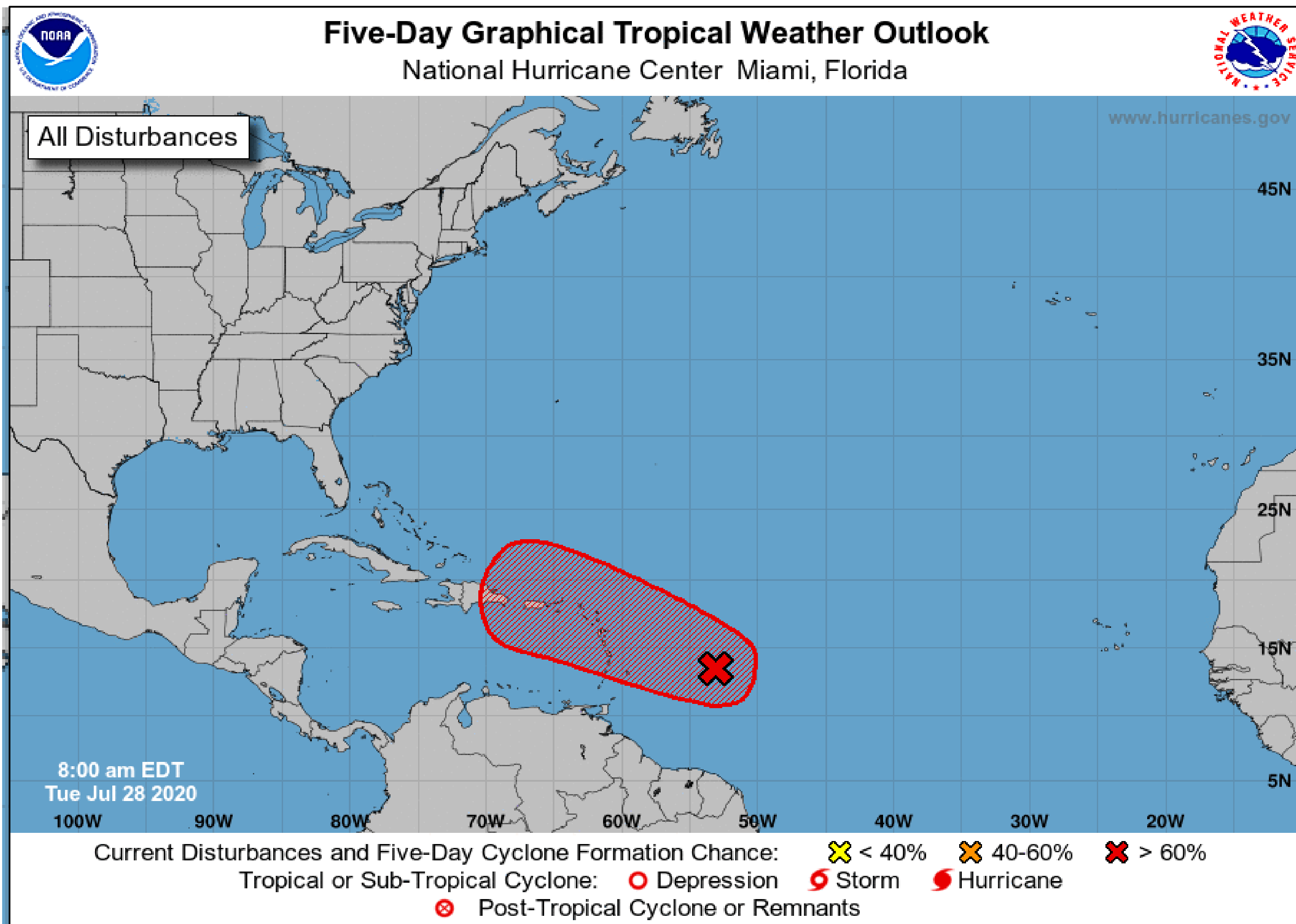
- 1008 mb low pres near 14N50W at 200 am ET
- Max winds 30 kt
- Moving WNW 20 kt
- Max seas 12 ft

Tropical Weather Outlook

Invest AL92



Tropical Analysis and Forecast Branch
NWS National Hurricane Center



- High probability of tropical development within red scalloped area next 48 hours and consistent with GFS forecast
- **Reminder:** *The hatched area represents a possible development area, not the system's path after development occurs.*

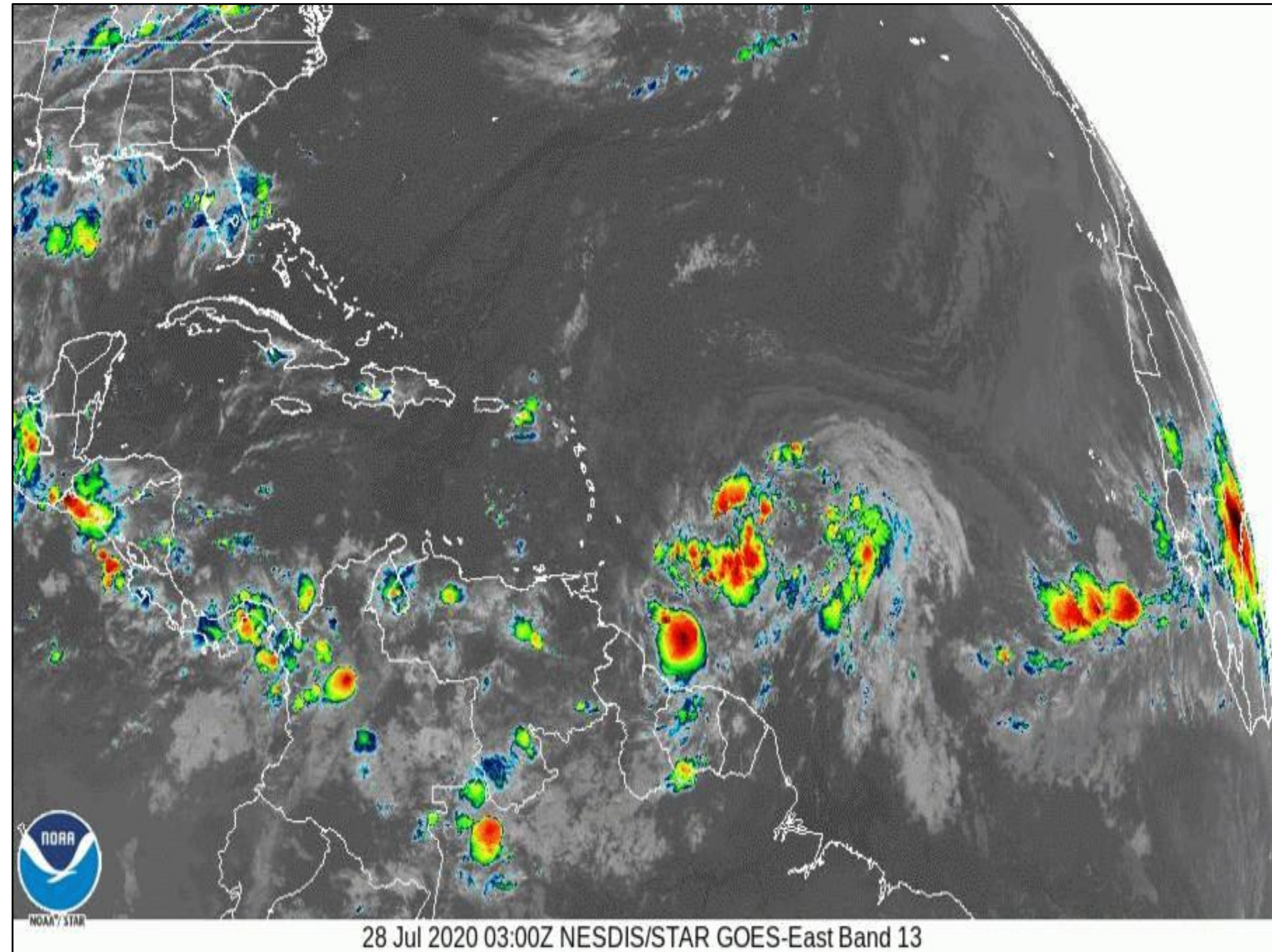
ATLC LOW PRES NEAR 14.3N 49.6W 1008 MB MOVING W AT 20 KT. WITHIN 09N41W TO 10N49W TO 15N58W TO 22N50W TO 17N41W TO 09N41W E TO SE WINDS 20 TO 30 KT. SEAS 8 TO 10 FT WITHIN 09N41W TO 10N49W TO 15N58W TO 22N50W TO 17N41W TO 09N41W E TO SE WINDS 20 TO 30 KT. SEAS 8 TO 10 FT

Current Satellite View



Tropical Analysis and Forecast Branch
NWS National Hurricane Center

Invest AL92



...Strong Tropical Wave Approaching
Leeward Islands...

Summary of 200 AM EDT...0600 UTC...

Low pres 1008 mb near 14N50W moving
west at 20 kt

E to SE winds 20-30 kt within 900 nm NW
quadrant and 600 nm NE quadrant

Seas 9-12 ft



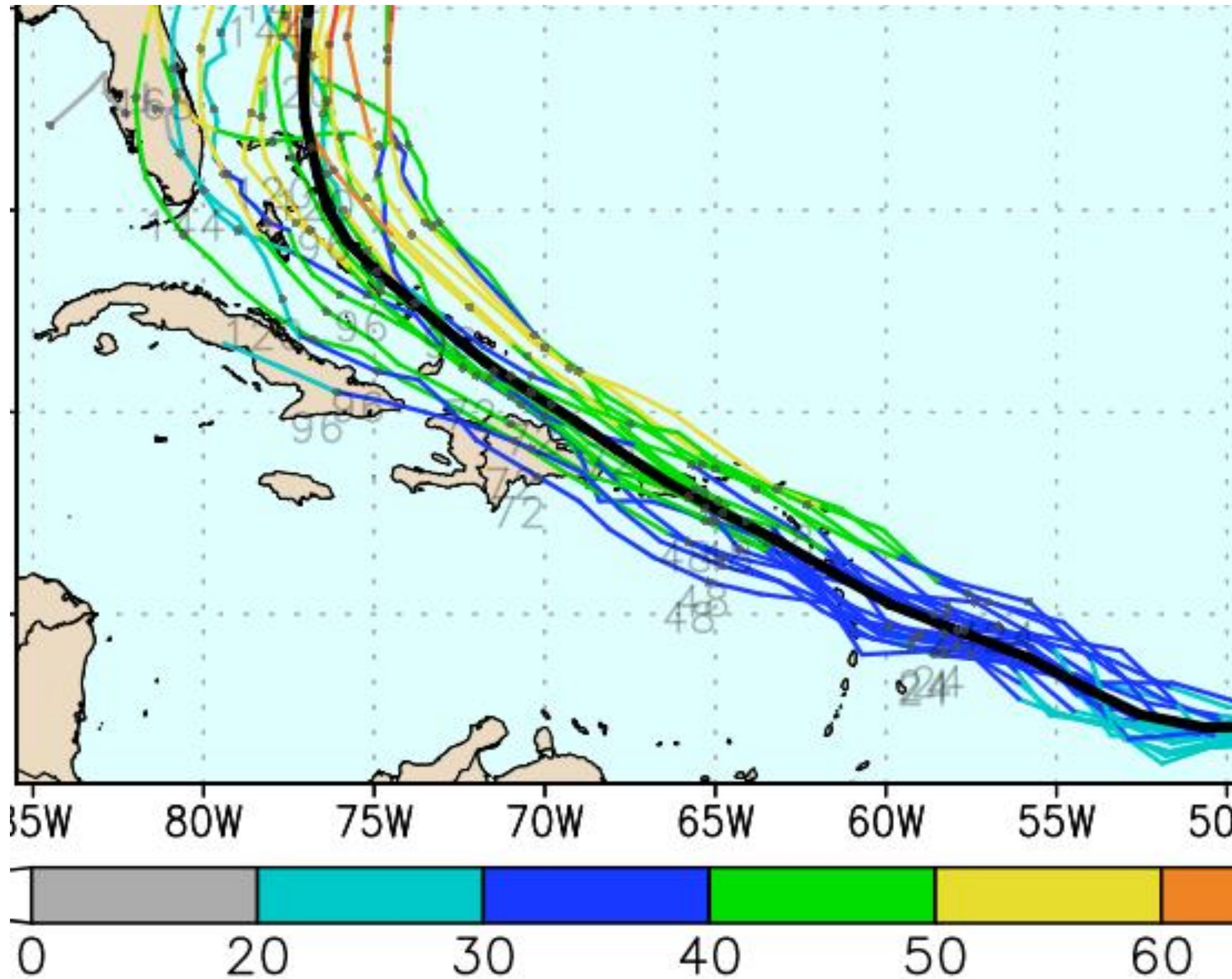
28 Jul 2020 03:00Z NESDIS/STAR GOES-East Band 13

Forecast Information

Invest AL92



Tropical Analysis and Forecast Branch
NWS National Hurricane Center



NOTE: Do not focus on the exact track. Impacts can occur well outside the area enclosed by the cone.

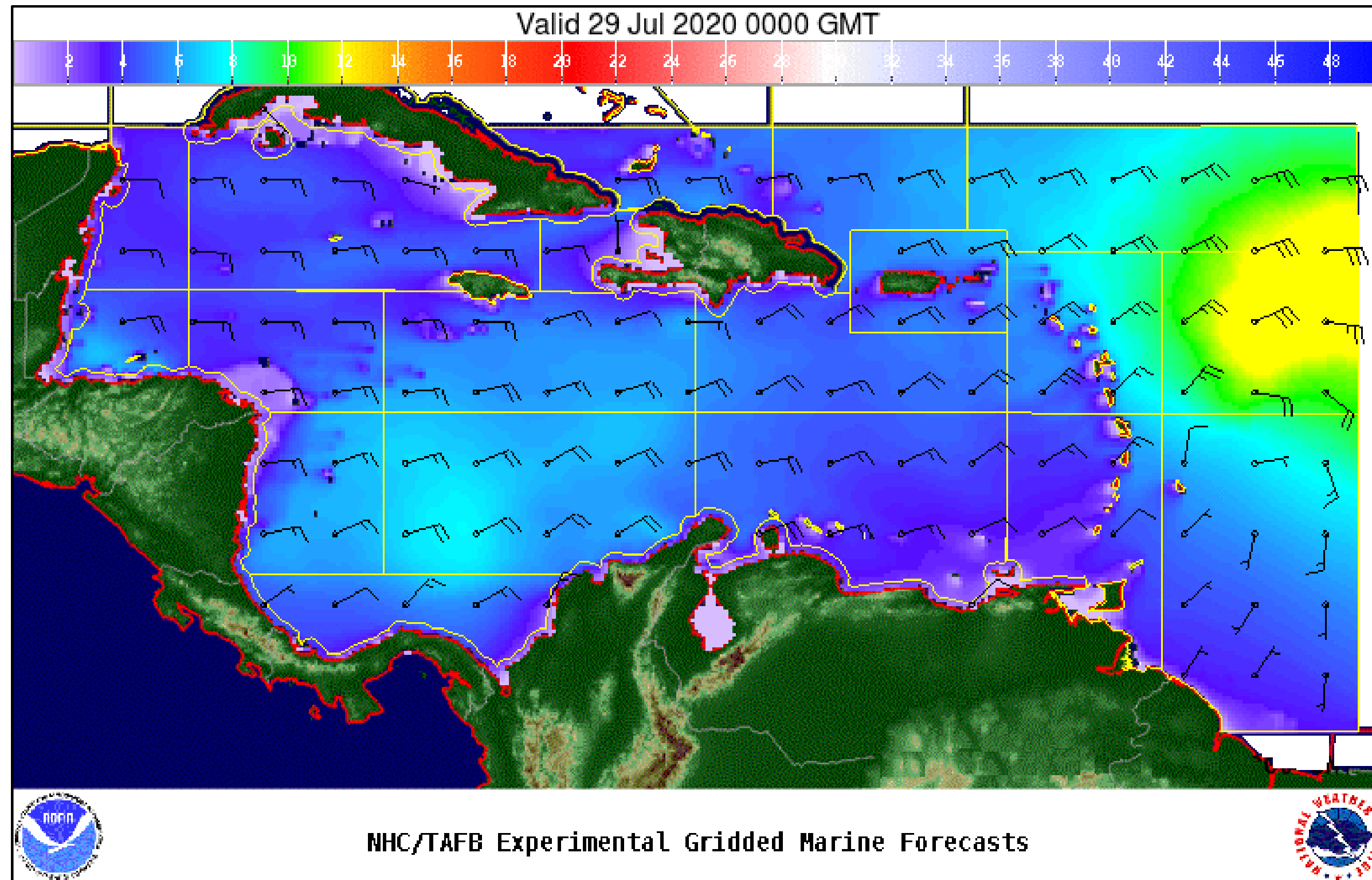
- GFS 51 member ensemble forecast (spaghetti plot) with line colors indicating forecast max wind
- Model general consensus suggesting AL92 crossing the Leeward Islands late Tue night through Wed, reaching the USVI Wed night and across Puerto Rico area Wed night through Thu
- Model consensus showing peak winds likely in the 40-50 kt range while crossing USVI/PR area

Wind And Waves

Invest AL92



Tropical Analysis and Forecast Branch
NWS National Hurricane Center

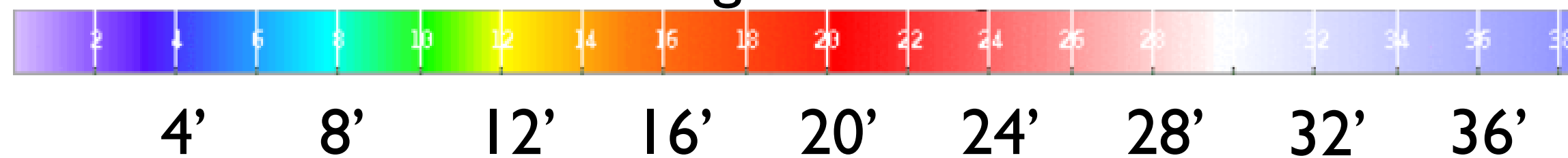


24 Hour Forecast
0600 UTC JUL 29

Peak Winds: 30 kt

Peak Seas: 12 ft

■ Wave heights are in feet

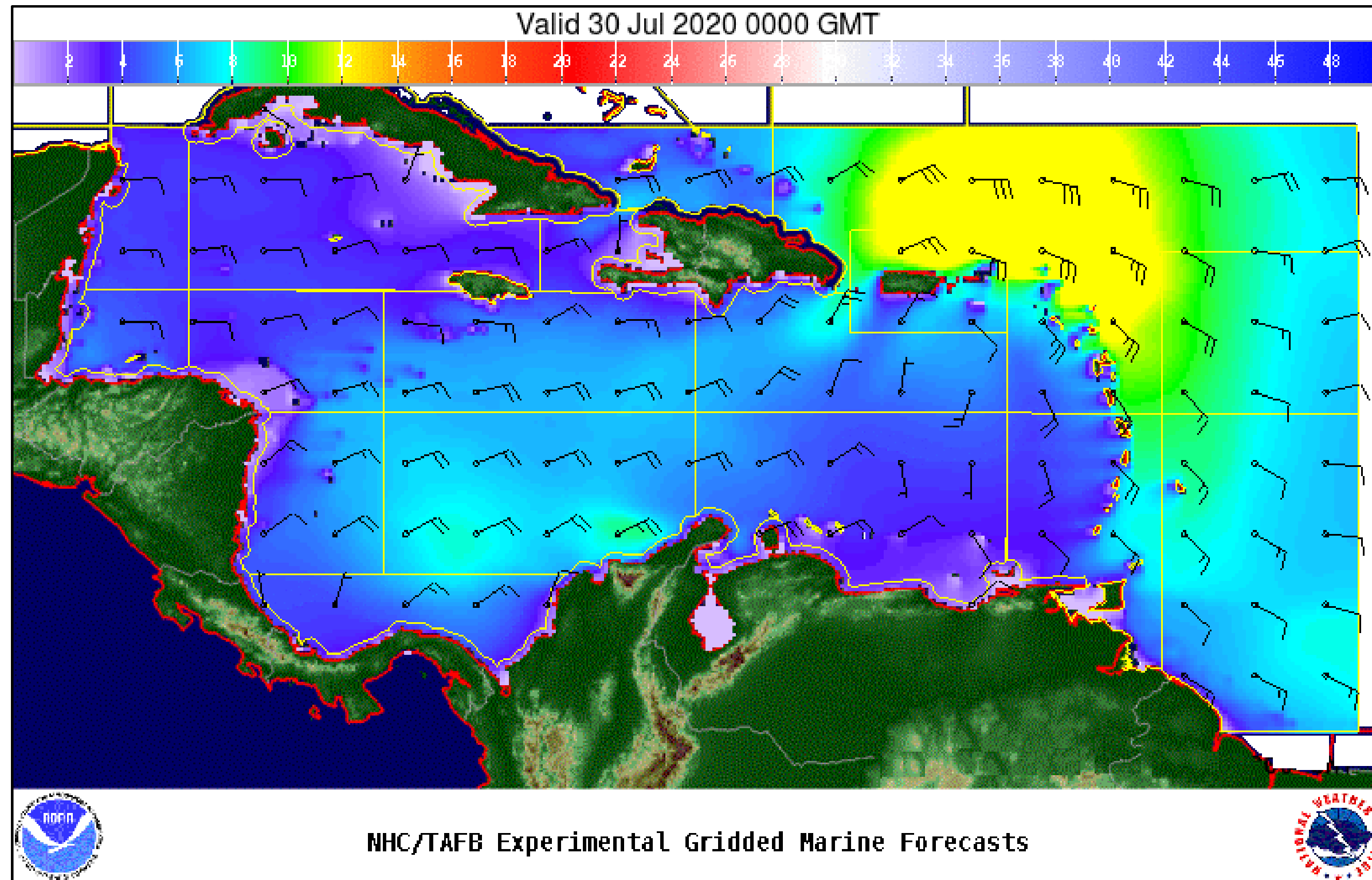


Wind And Waves

Invest AL92



Tropical Analysis and Forecast Branch
NWS National Hurricane Center

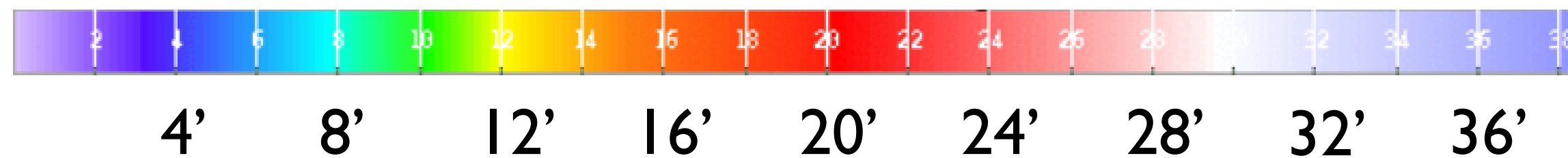


48 Hour Forecast
0600 UTC JUL 30

Peak Winds: 30 kt

Peak Seas: 12 ft

- Wave heights are in feet

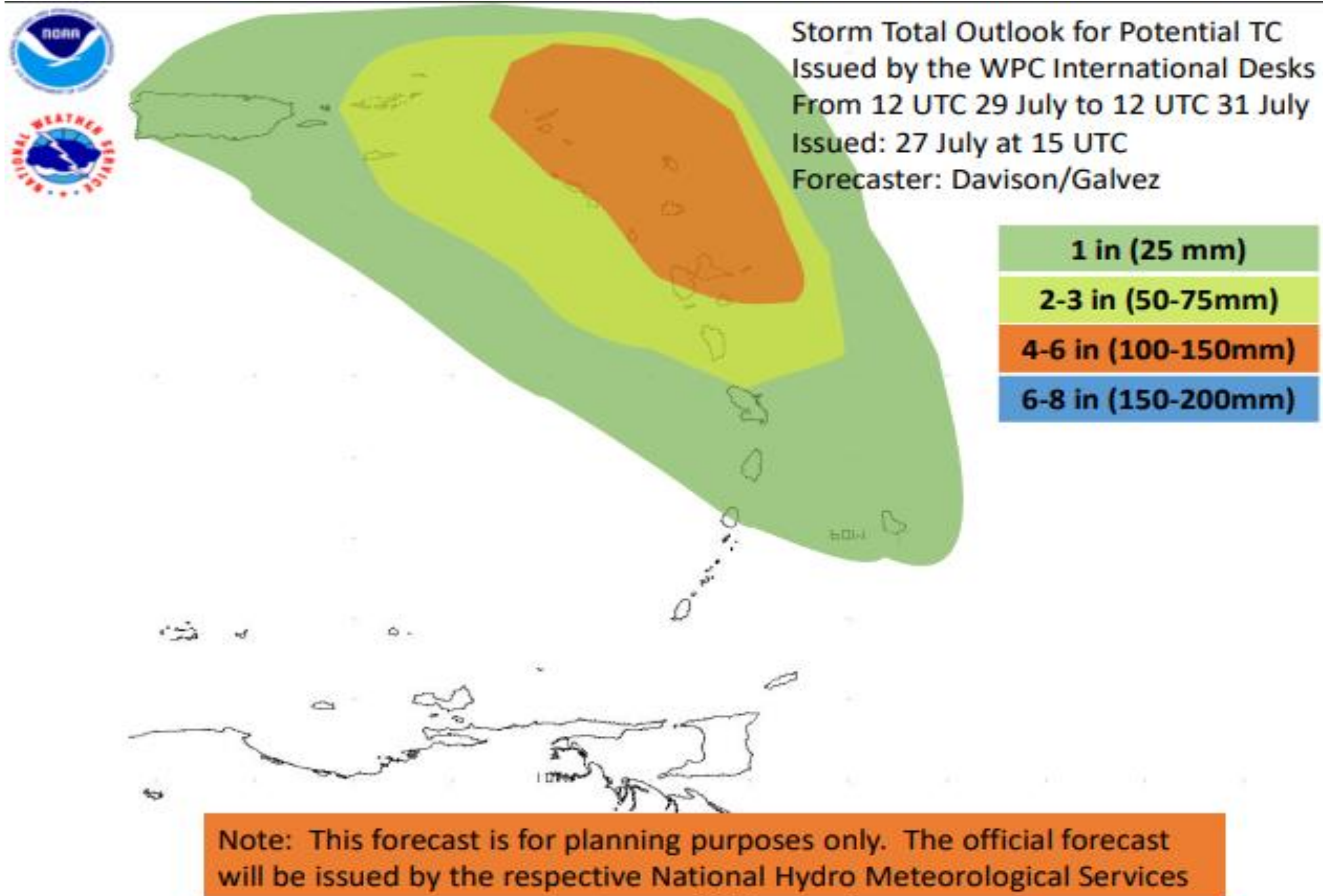


Expected Storm Total Rainfall

Invest AL92



Tropical Analysis and Forecast Branch
NWS National Hurricane Center



- Total rainfall in inches during the time span stated on the map.

Risk of rainfall exceeding flash flood guidance within 25 miles of a point

HIGH: > 50% **SLGT: 10%-20%**

MDT: 20%-50% **MRGL: 5%-10%**

Refer to map legend for Valid Time



INVEST AL92 BRIEFING

You can contact the Tropical Analysis and Forecast Branch at
305-229-4424

*The Next Briefing Will Be:
Wednesday 8:00 AM EST*

You can always find get the latest graphics and information for this storm at www.hurricanes.gov



NHC_TAFB

www.nhc.noaa.gov