

IMPACTS FOR D7 through the next 2 days)

Winds – Low-Medium

Storm Surge – Low

Rainfall/Flash Flooding – Low

Tornadoes – None

Waves - Low

INVEST AL96 BRIEFING

8:15 AM EDT

Monday, June 28, 2021

Prepared by:

Chris Landsea/Jorge Aguirre

Tropical Analysis and Forecast Branch

NWS National Hurricane Center

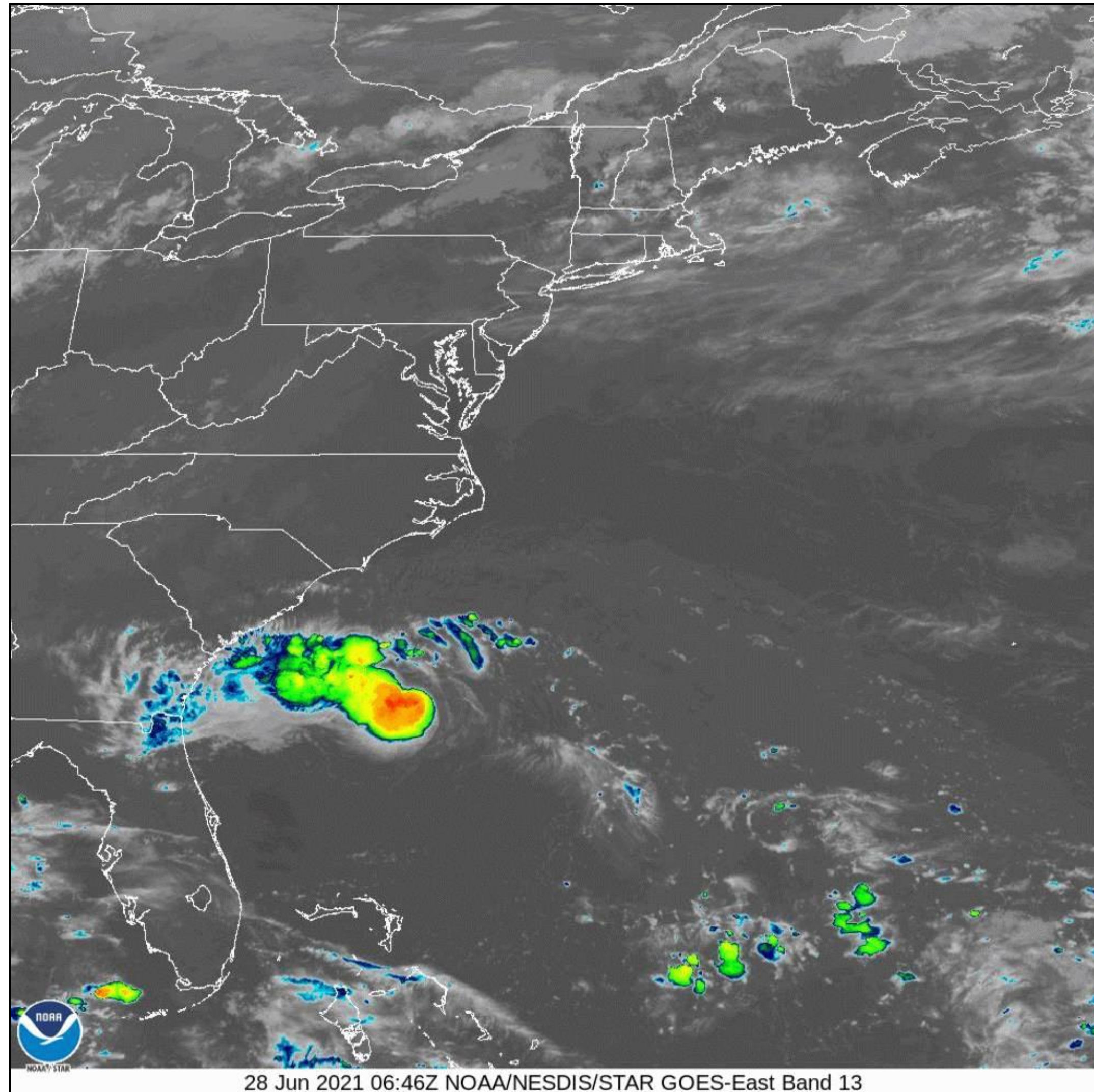


Current Satellite View

Invest AL96



Tropical Analysis and Forecast Branch
NWS National Hurricane Center



Summary of 800 AM EDT Information

Location... 31N 77W

About 160 nm...ESE of Hilton Head, SC

Maximum Sustained Winds...30 kt

Present Movement...WNW at 15 kt

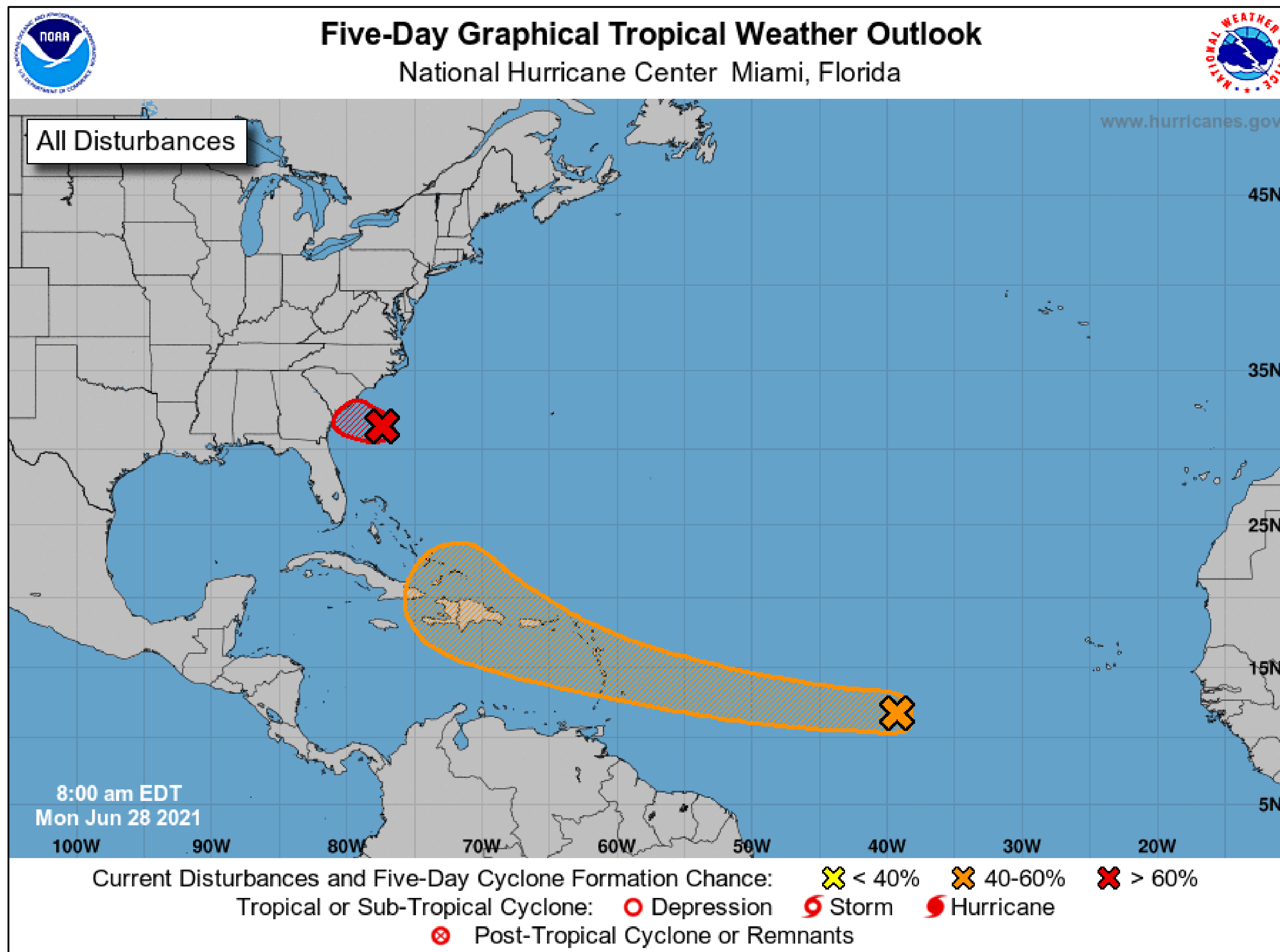
Peak Seas: 12 FT

Tropical Weather Outlook

Invest AL96



Tropical Analysis and Forecast Branch
NWS National Hurricane Center



- A well-defined low pressure system located about 160 nm east-southeast of Hilton Head Island, South Carolina, is producing a large area of showers and thunderstorms mainly west of the center.
- However, any additional increase in organization of the thunderstorm activity would result in the issuance of advisories for a tropical depression or tropical storm later this morning or afternoon.
- The low is forecast to move west-northwestward at 15 kt, and the system should reach the coast of southern South Carolina or Georgia by this evening.
- If advisories are initiated, then tropical storm warnings could be required for a portion of the Georgia and South Carolina coasts with short notice.
- Regardless of development, a few inches of rain are possible along the immediate coasts of Georgia and southern South Carolina through Tuesday.
- * Formation chance through 48 hours...high...70 percent.
- **Reminder:** The hatched area represents a possible development area, not the system's path after development occurs.

Hazards Map

Invest AL96



Tropical Analysis and Forecast Branch
NWS National Hurricane Center



Small Craft Advisory

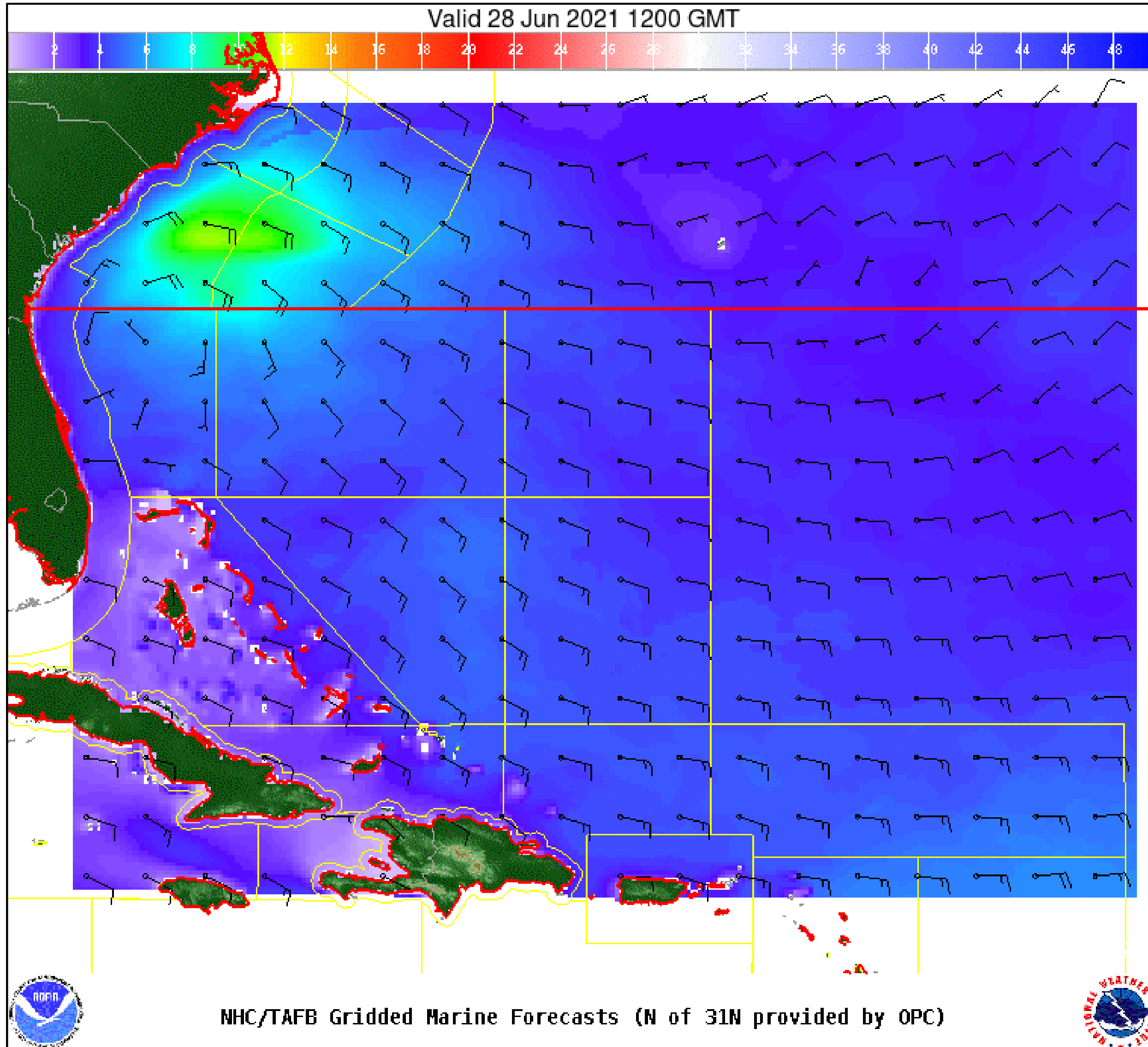
<https://nowcoast.noaa.gov/>

Wind And Waves

Invest AL96



Tropical Analysis and Forecast Branch
NWS National Hurricane Center



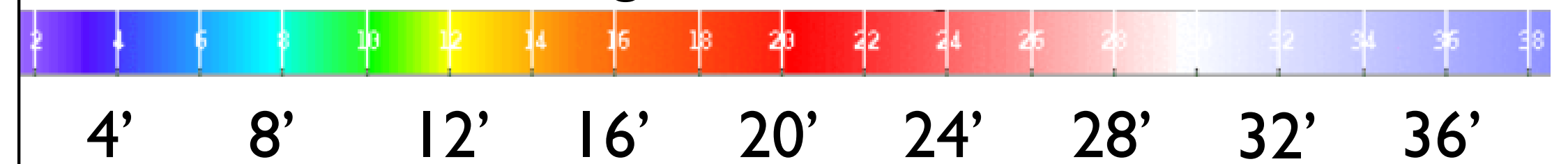
Current Conditions

7am EDT, Monday, June 28th, 2021

Peak Winds: 30 kt

Peak Seas: 12 ft

■ Wave heights are in feet



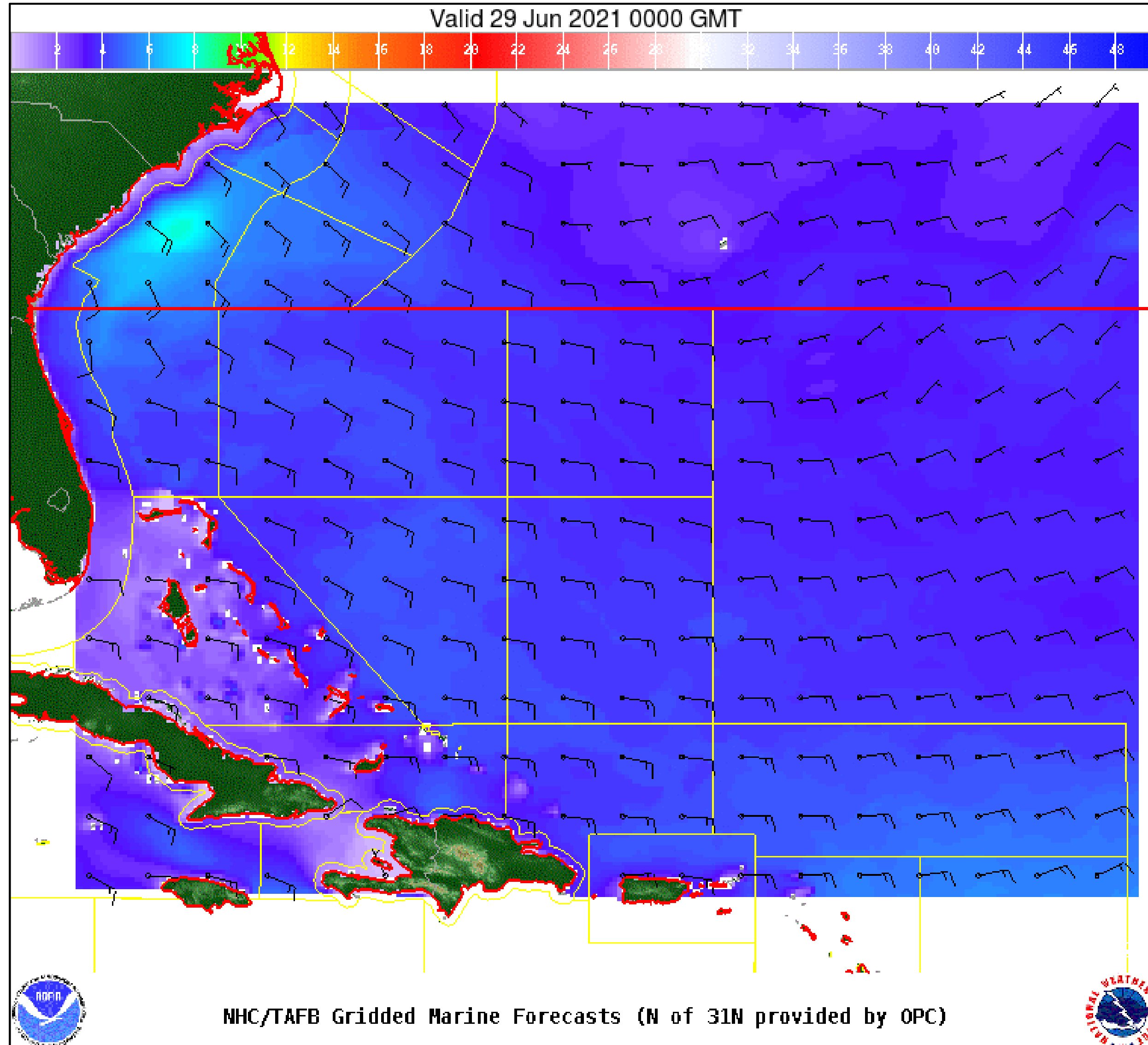
NHC/TAFB Gridded Marine Forecasts (N of 31N provided by OPC)

Wind And Waves

Invest AL96



Tropical Analysis and Forecast Branch
NWS National Hurricane Center



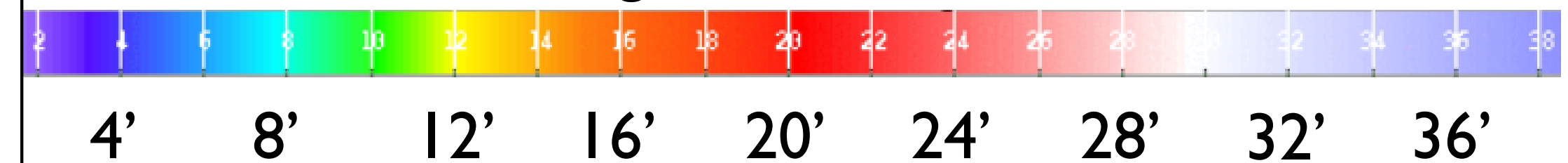
12 Hour Forecast

7pm EDT, Monday, June 28th, 2021

Peak Winds: 25 kt

Peak Seas: 10 ft

■ Wave heights are in feet

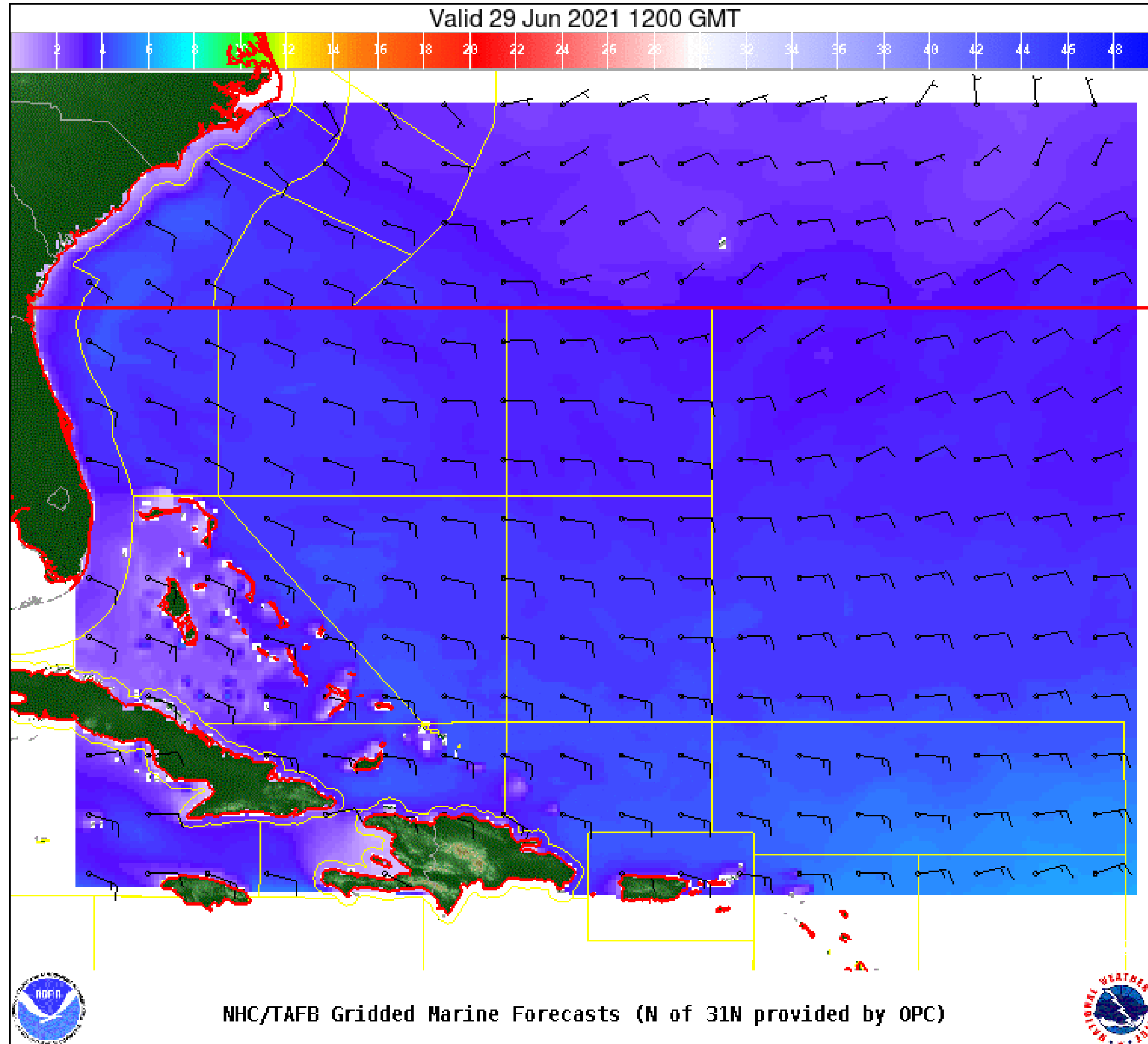


Wind And Waves

Invest AL96



Tropical Analysis and Forecast Branch
NWS National Hurricane Center



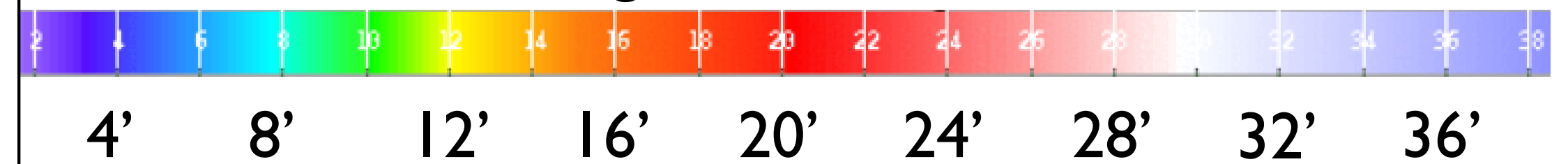
24 Hour Forecast

7am EDT, Tuesday, June 29th, 2021

Peak Winds: 15 kt

Peak Seas: 6 ft

■ Wave heights are in feet



NHC/TAFB Gridded Marine Forecasts (N of 31N provided by OPC)

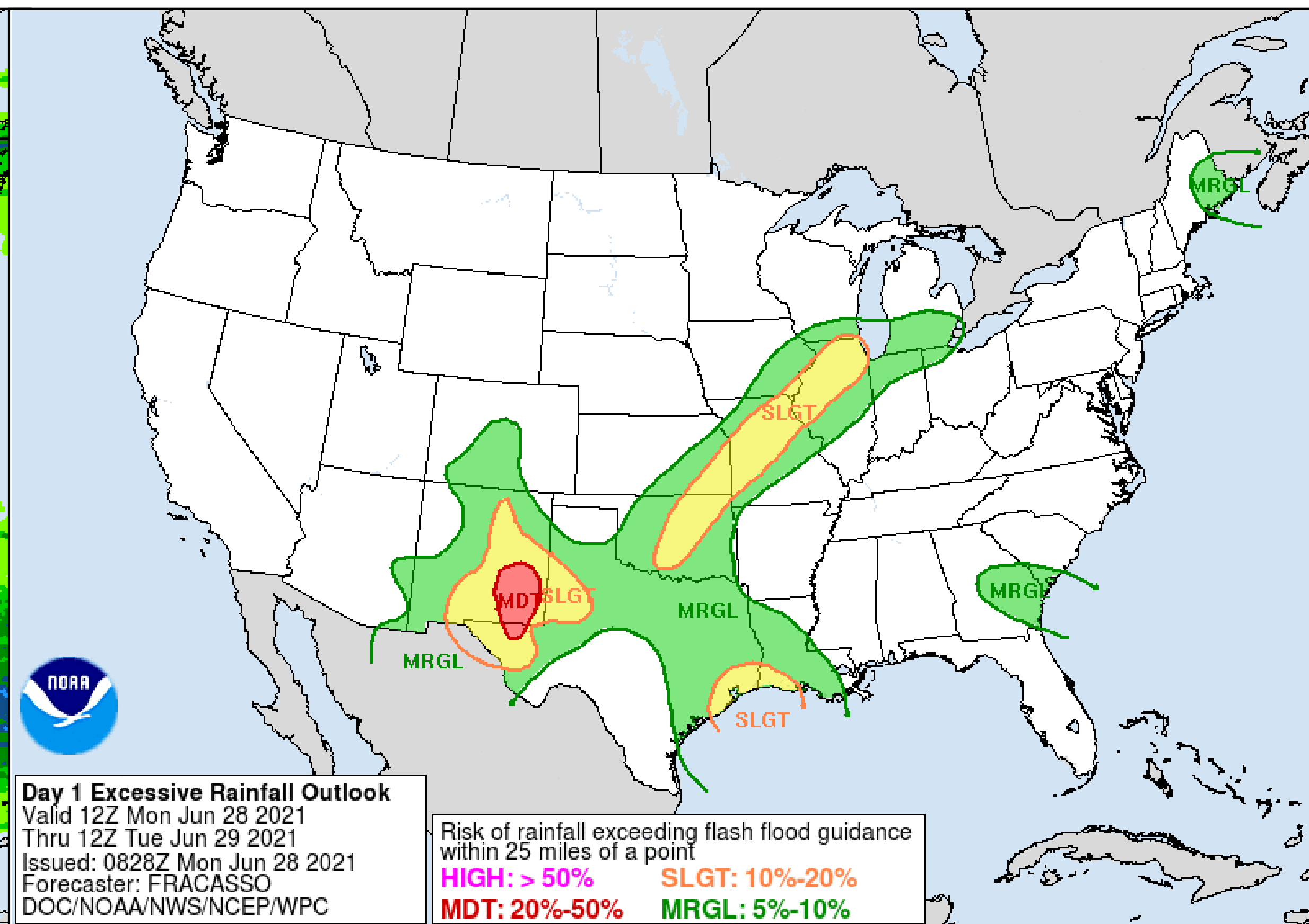
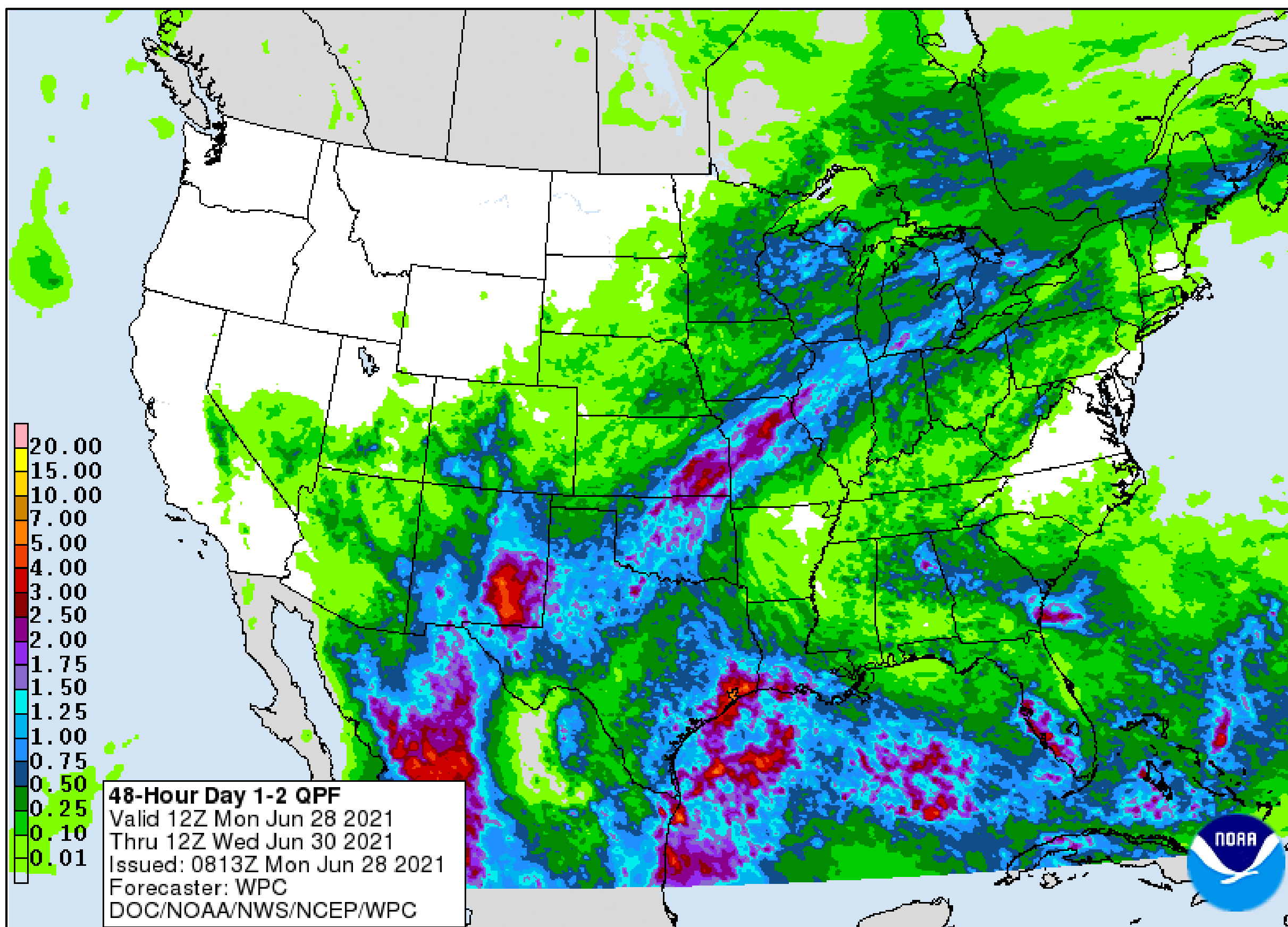
Expected Storm Total Rainfall and Chance of Rainfall Flooding



Tropical Analysis and Forecast Branch
NWS National Hurricane Center

Invest AL96

Images from NWS Weather Prediction Center



- Total rainfall in inches through Wednesday morning.

Risk of rainfall exceeding flash flood guidance within 25 miles of a point

HIGH: > 50% **SLGT: 10%-20%**
MDT: 20%-50% **MRGL: 5%-10%**

Valid through Tuesday morning



- Low pressure system likely to become tropical depression or storm later today
- Expected to make landfall tonight or early Tuesday as either tropical depression or storm in northern GA or SC

IMPACTS FOR D7 through the next 2 days)

Winds – Low-Medium

Storm Surge – Low

Rainfall/Flash Flooding – Low

Tornadoes – None

Waves - Low



INVEST AL96 BRIEFING

You can contact the Tropical Analysis and Forecast Branch at
305-229-4424

You can always find get the latest graphics and information for this storm at www.hurricanes.gov



NHC_TAFB

www.nhc.noaa.gov