

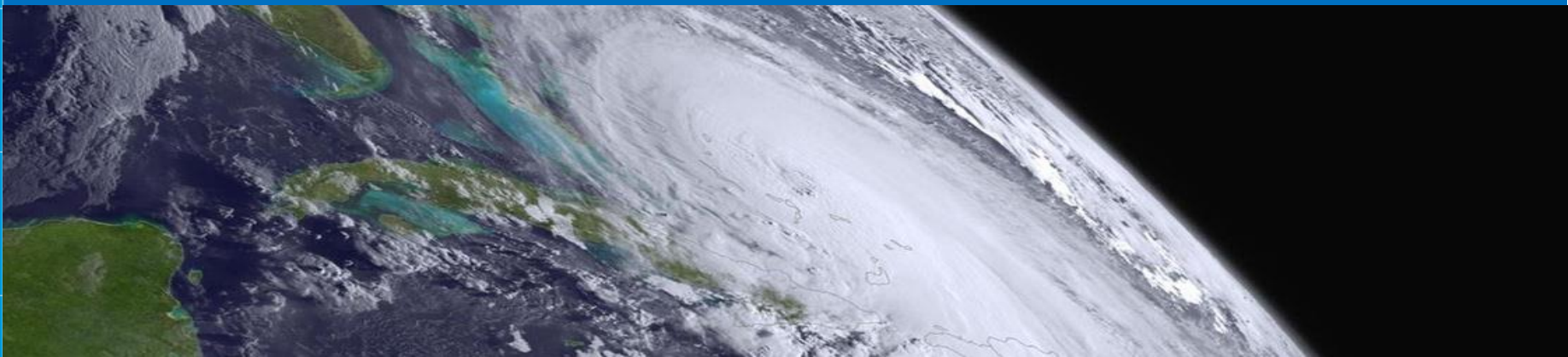


**NOAA**

National  
Weather  
Service

# USCG District 7 Visit

NWS Miami : Larry Kelly & Rob Molleda





# Daily Operations & Tools





# Point & Click

- Click anywhere over Marine Area Of Responsibility to get a detailed forecast

- Synopsis, Gulf Stream Hazards and Daily Forecast

- <https://www.weather.gov/mfl>

**.gov not .com**

News

Organization

Search for:

Point Forecast: 7NM E Cape Florida FL  
25.68N 80.04W

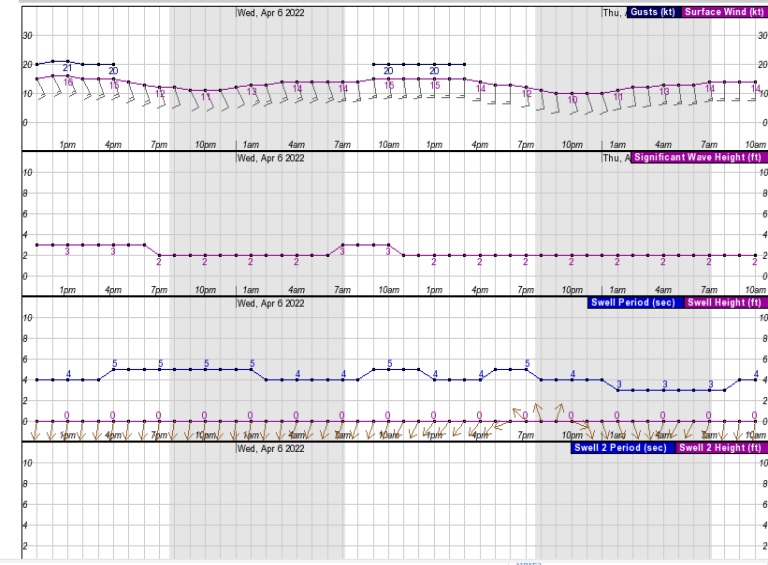
Last Update: 10:16 am EDT

Hourly Weather Forecast Graph

[dashes/dots] [b/w] [hide menu] **XML**

Weather Elements	Marine Weather	Probabilistic Forecasts (Experimental)
<input type="checkbox"/> Temperature (°F) <input type="checkbox"/> Dewpoint (°F) <input type="checkbox"/> Heat Index (°F) <input checked="" type="checkbox"/> Surface Wind <span>kt</span> <input type="text"/> <input type="checkbox"/> Sky Cover (%) <input type="checkbox"/> Precipitation Potential (%) <input type="checkbox"/> Relative Humidity (%) <input type="checkbox"/> Rain <input type="checkbox"/> Thunder <input type="checkbox"/> Fog	<input checked="" type="checkbox"/> Swell Period <input checked="" type="checkbox"/> Swell Hgt/Dir <input checked="" type="checkbox"/> Swell 2 Period <input checked="" type="checkbox"/> Swell 2 Hgt/Dir <input checked="" type="checkbox"/> Wind Wave Height <input checked="" type="checkbox"/> Significant Wave Height <input type="checkbox"/> Freezing Spray	Quantitative Precipitation <span>6-hr</span> <input type="text"/> <a href="#">info</a> <input type="checkbox"/> 0.10 <input type="checkbox"/> 0.25 <input type="checkbox"/> 0.50 <input type="checkbox"/> 1.00

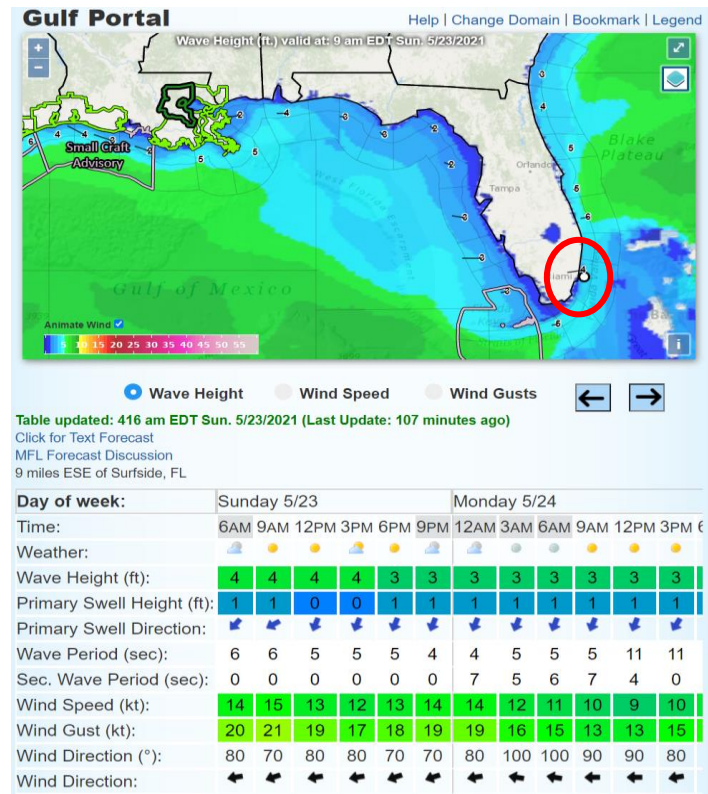
48-Hour Period Starting: 11am Tue, Apr 5 2022





# Point & Click Portal

- Experimental Marine Portal for forecast
- 3 hourly forecast for an point, shows advisories, warnings etc.
- <https://www.weather.gov/greatlake/s/?portal=gulf>





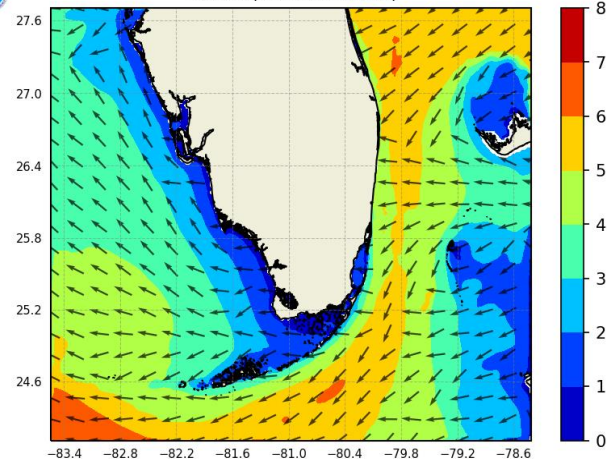
# NWPS



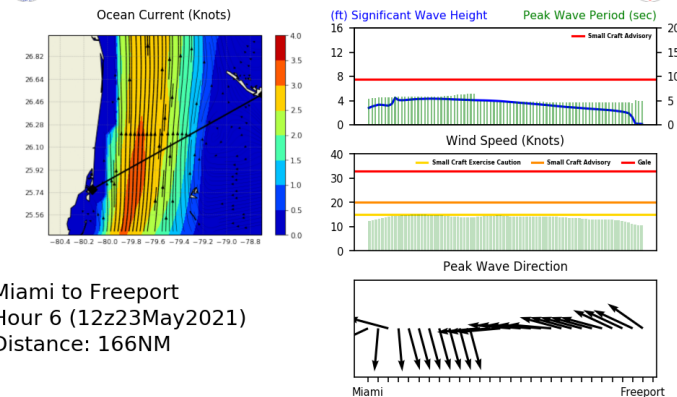
- Wave Height, Wind Speed, Swell, Wave Period, Current Modeling
- Transects can be made custom for USCG operations
- <https://polar.ncep.noaa.gov/nwps/nwpsloop.php?site=MFL&cg=1>



NWPS Significant Wave Height (ft) and Peak Wave Direction  
Hour 0 (06Z23MAY2021)



Experimental Nearshore Wave Prediction System  
Transect Forecast Guidance



Miami to Freeport  
Hour 6 (12Z23May2021)  
Distance: 166NM

**\*\*EXPERIMENTAL\*\***: The accuracy or reliability of these forecasts are not guaranteed nor warranted in any way. Forecast should not be used as the sole resource for decision making. Graphics may not be available at all times.



# Graphical Hazard Outlook



## Experimental Graphical Hazardous Weather Outlook

Weather Forecast Office Miami, FL  
Updated: April 5th 2022, 10:08:42 am

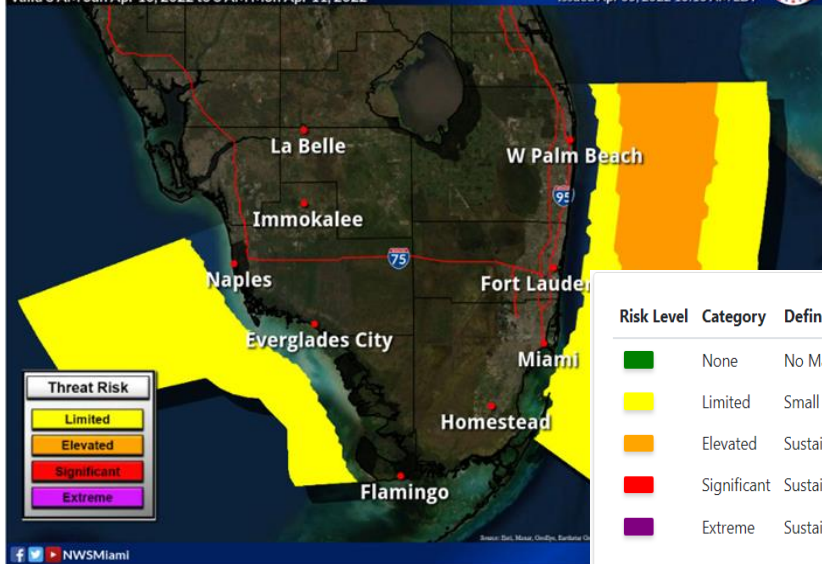


### Marine Hazard Risk for Sun/Sun Night

Valid 8 AM Sun Apr 10, 2022 to 8 AM Mon Apr 11, 2022

Weather Forecast Office  
Miami/South Florida

Issued Apr 05, 2022 10:10 AM EDT



Public

Marine

#### 24 Hr Hazard Risks

	Today	Wed	Thu	Fri	Sat	Sun	Mon
High Surf	Green	Green	Green	Green	Green		
Rip Current	Yellow	Yellow	Yellow	Red	Red		
Marine Hazard	Yellow	Yellow	Yellow	Yellow	Orange	Orange	Yellow
Coastal Flood	Green	Green	Green	Green			

#### Risk Level Category Definition

Green	None	No Marine Risk.
Yellow	Limited	Small craft should exercise caution.
Orange	Elevated	Sustained winds of 20-33 knots and/or seas equal or greater than 7 ft. Hazardous conditions for small craft.
Red	Significant	Sustained winds or frequent gusts of 34-49 knots and/or seas equal or greater than 10 ft. Dangerous marine conditions.
Purple	Extreme	Sustained winds or frequent gusts equal or greater than 50 knots and/or seas equal or greater than 12 ft. Very dangerous marine conditions.





# Decision Support Services (DSS)







# Spot Forecast



- Can give a hourly marine/weather forecast for a routine operation or an emergency
- Call our duty forecaster to give lat/lon and we will provide the forecast for you

305-229-4525



<https://www.weather.gov/spot/request/>

National Weather Service Miami/South Florida

2021-05-23 5:55 AM EDT

Spot Forecast for MAIRNE TEST...NWS

National Weather Service Miami FL

554 AM EDT Sun May 23 2021

Forecast is based on forecast start time of 0700 EDT on May 23.  
If conditions become unrepresentative...contact the National Weather Service.

Please contact our office at (305) 229-4522, if you have questions or concerns with this forecast.

.DISCUSSION...

High pressure with mostly sunny skies and a slight chance of showers over the waters mainly this morning. Easterly winds 10 to 15 mph with seas around 4 feet.

.REST OF TODAY...

Sky/weather.....Mostly sunny (25-35 percent). Slight chance of sprinkles in the morning.

Max temperature.....Around 78.

Surface winds.....East winds 12 to 14 mph.

Chance of pcprn.....10 percent.

Swell height.....Northeast swell 0 feet.

Wave height.....4 feet.

Swell period.....6 SECONDS.

TIME (EDT)	7AM	8AM	9AM	10A	11A	12P	1PM	2PM	3PM	4PM	5PM
Sky (%)	39	29	25	28	25	23	25	30	30	26	24
Weather cov	SCH	SCH	SCH	SCH	SCH	SCH	SCH	SCH	SCH	SCH	SCH
Weather type	RW	RW	RW	RW	RW	RW	RW	RW	RW	RW	RW
Tstm cov	.....	.....	.....	.....	.....	.....	.....	.....	.....	.....	.....
Temp	77	77	77	77	77	77	77	77	77	78	77
Chc of pcprn (%)	10	10	10	10	10	10	10	10	10	10	10
SWELL DIRECTION	W	SW	W	N	NE	NE	NE	NE	NE	NE	NE
SWELL HGT (FT)	0	0	0	0	0	0	0	0	0	0	0
Swell period (s)	6	6	6	6	6	5	5	5	5	5	5
Wave height (ft)	4	4	4	4	4	4	4	4	4	4	4

.TONIGHT...

Sky/weather.....Partly cloudy (25-35 percent).

Min temperature.....Around 76.

Surface winds.....East winds 9 to 14 mph.

Chance of pcprn.....10 percent.

Swell height.....North swell 1 feet.

Wave height.....3 feet.

Swell period.....5 SECONDS.

TIME (EDT)	6PM	7PM	8PM	9PM	10P	11P	MID	1AM	2AM	3AM	4AM	5AM
Sky (%)	28	26	27	30	37	34	29	19	21	24	20	24
Weather cov	.....	.....	.....	.....	.....	.....	.....	.....	.....	.....	.....	.....
Weather type	.....	.....	.....	.....	.....	.....	.....	.....	.....	.....	.....	.....
Tstm cov	.....	.....	.....	.....	.....	.....	.....	.....	.....	.....	.....	.....
Temp	77	77	77	77	77	77	77	77	77	77	77	76
Chc of pcprn (%)	0	0	0	0	0	0	0	10	10	10	10	10
SWELL DIRECTION	NE	NE	NE	NE	NE	NE	NE	NE	NE	NE	NE	N
SWELL HGT (FT)	0	0	0	0	1	1	1	1	1	1	1	1
Swell period (s)	5	4	4	4	4	4	5	5	5	5	5	5
Wave height (ft)	3	3	3	3	3	3	3	3	3	3	3	3

.MONDAY...

Sky/weather.....Sunny (15-25 percent).

Max temperature.....Around 79.

Surface winds.....East winds 8 to 12 mph.

Chance of pcprn.....10 percent.

Swell height.....Northeast swell 1 feet.

Wave height.....3 feet.

Swell period.....5 SECONDS.

TIME (EDT)	6 AM	8 AM	10 AM	NOON	2 PM	4 PM
Sky (%)	23	17	20	20	13	13
Weather cov	.....	.....	.....	.....	.....	.....
Weather type	NONE	NONE	NONE	NONE	NONE	NONE
Tstm cov	.....	.....	.....	.....	.....	.....
Temp	76	77	77	78	78	78
Chc of pcprn (%)	0	0	0	0	0	0
SWELL DIRECTION	N 1	N 1	N 1	NE 1	NE 1	NE 1
SWELL HGT (FT)	5	5	5	5	5	5
Swell period (s)	3	3	3	3	3	3
Wave height (ft)	3	3	3	3	3	3







# Briefing for Specific Operations



## National Weather Service Miami/South Florida

Phone: 305-229-4525  
Email: [sr-mfi.ops@noaa.gov](mailto:sr-mfi.ops@noaa.gov)

Valid As Of: 4:30am Sunday, May 23, 2021

### USCG Miami Sector Operations Decision Support Forecast

#### SYNOPSIS:

Today should be mostly dry. An approaching weak cold front will bring a slight chance of showers tomorrow. The front is forecast to move across the area Wednesday night, bringing somewhat better chances of rain. Behind the front on Thursday, high pressure is forecast to build in with drier conditions.

#### Watches/Warnings/Advisories:

None.

#### SB LIV Operations- Miami Bayfront Park

	Weather	Chop	Winds
Tue 28 Jan	Partly Sunny, Dry	Light Chop	NNW 10 KT
Wed 29 Jan	Slight chance of showers	Light Chop	Variable 5 to 10 KT
Thu 30 Jan	Partly Sunny, Dry	Light Chop	NNW 5 to 10 KT

#### Today's Hazards

Hazard	Timing	Hazard Impact Level
Winds	All of Tuesday	None
Chop	All of Tuesday	None
Lightning	All of Tuesday	None





# Tropical Ops & Briefings



# NHC & NWS Office Forecasts

Working together to provide a clear, consistent, and effective tropical message

## National Hurricane Center

 Large Scale

 Location of interest moves with storm

 Storm intensity, track, size

 Maximum Wind Values and Probabilities

 Broad wind, rainfall, and tornado information

## Local Forecast Office

Local scale

Location of interest is the local area of responsibility

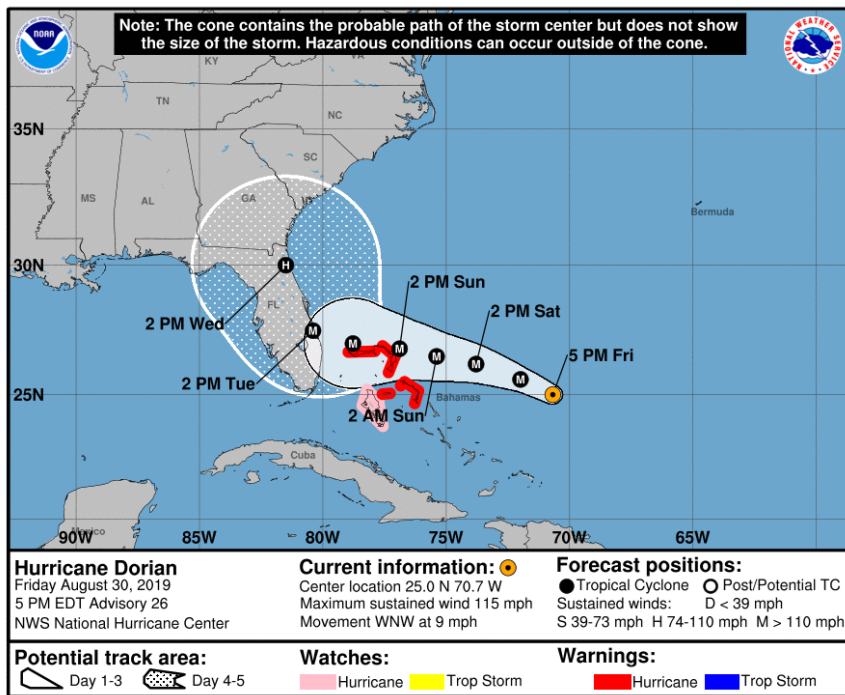
Specific local wind, surge, rainfall, and tornado information

Local threats and potential impacts



# Situation Overview

## Hurricane Dorian



**NOTE:** Do not focus on the exact track.  
Impacts can occur well outside the area enclosed by the cone.

- What has changed, biggest impact
- Brief discussion of any watches or warnings in effect.
- Biggest Threats & Impacts
- Other caveats/conditions that may affect preparation or long term concerns (heavy rainfall that begins prior, etc).

# Hurricane Local Statement - HLS

Land only product

Broadcasts on NOAA  
Weather Radio

Overview of tropical  
impacts across the  
WFO's Area of  
Responsibility

Hurricane Michael Local Statement Advisory Number 14  
National Weather Service Tallahassee FL AL142018  
1257 AM EDT Wed Oct 10 2018 /1157 PM CDT Tue Oct 9 2018/

This product covers EASTERN FLORIDA PANHANDLE...FLORIDA BIG  
BEND...SOUTHEASTERN ALABAMA AND SOUTHWESTERN GEORGIA

**\*\*UNPRECEDENTED EVENT EXPECTED FOR THE FLORIDA PANHANDLE AND BIG  
BEND\*\***

## NEW INFORMATION

\* CHANGES TO WATCHES AND WARNINGS:  
- None

\* CURRENT WATCHES AND WARNINGS:  
- A Tropical Storm Warning and Hurricane Watch are in effect for  
Clay, Coffee, Dale, Henry, Lee, Quitman, Randolph, and Terrell  
- A Storm Surge Warning and Hurricane Warning are in effect for  
Coastal Bay, Coastal Dixie, Coastal Franklin, Coastal Gulf  
- A Hurricane Warning is in effect for Baker, Brooks, Calhoun,  
Calhoun, Central Walton, Colquitt, Decatur, Dougherty, Early  
- A Tropical Storm Warning is in effect for Ben Hill, Berrien,  
Cook, Inland Dixie, Inland Taylor, Irwin, Lafayette, Lanier,

\* STORM INFORMATION:  
- About 210 miles south-southwest of PANAMA CITY or about 200  
miles south-southwest of APALACHICOLA  
- 27.1N 86.5W  
- Storm Intensity 125 mph  
- Movement North or 355 degrees at 12 mph

## SITUATION OVERVIEW

Catastrophic storm surge and winds are expected from Michael. Hurricane Michael continues to strengthen and is currently a strong category 3. Michael is expected to intensify to category 4 before landfall. Michael will make landfall tomorrow along the Florida Panhandle Coast. This is an unprecedented event as there are no Category 4 storms on record to have made landfall along the Florida Panhandle coast. Michael is expected to bring life-threatening storm surge, widespread power outages that will last days to even more than a week in some areas, downed trees that will block access to roads and endanger individuals, structural damage to homes and businesses,

# Hurricane Local Statement - HLS

Affected Area

Headline/Primary Message

New Information since last storm update

Overview of Situation

Generalized Threat Assessment

Generalized impacts for area

Hurricane Michael Local Statement Advisory Number 14  
National Weather Service Tallahassee FL AL142018  
1257 AM EDT Wed Oct 10 2018 /1157 PM CDT Tue Oct 9 2018/

This product covers EASTERN FLORIDA PANHANDLE...FLORIDA BIG BEND...SOUTHEASTERN ALABAMA AND SOUTHWESTERN GEORGIA

**\*\*UNPRECEDENTED EVENT EXPECTED FOR THE FLORIDA PANHANDLE AND BIG BEND\*\***

## NEW INFORMATION

\* CHANGES TO WATCHES AND WARNINGS:  
- None

\* CURRENT WATCHES AND WARNINGS:  
- A Tropical Storm Warning and Hurricane Watch are in effect for Clay, Coffee, Dale, Henry, Lee, Quitman, Randolph, and Terrell  
- A Storm Surge Warning and Hurricane Warning are in effect for Coastal Bay, Coastal Dixie, Coastal Franklin, Coastal Gulf  
- A Hurricane Warning is in effect for Baker, Brooks, Calhoun, Calhoun, Central Walton, Colquitt, Decatur, Dougherty, Early  
- A Tropical Storm Warning is in effect for Ben Hill, Berrien, Cook, Inland Dixie, Inland Taylor, Irwin, Lafayette, Lanier,

\* STORM INFORMATION:  
- About 210 miles south-southwest of PANAMA CITY or about 200 miles south-southwest of APALACHICOLA  
- 27.1N 86.5W  
- Storm Intensity 125 mph  
- Movement North or 355 degrees at 12 mph

## SITUATION OVERVIEW

Catastrophic storm surge and winds are expected from Michael. Hurricane Michael continues to strengthen and is currently a strong category 3. Michael is expected to intensify to category 4 before landfall. Michael will make landfall tomorrow along the Florida Panhandle Coast. This is an unprecedented event as there are no Category 4 storms on record to have made landfall along the Florida Panhandle coast. Michael is expected to bring life-threatening storm surge, widespread power outages that will last days to even more than a week in some areas, downed trees that will block access to roads and endanger individuals, structural damage to homes and businesses,



# Hurricane Local Statement - HLS

- Potential Impact Sections:
  - Wind
  - Surge
  - Flooding Rain
  - Tornadoes

## POTENTIAL IMPACTS

### \* WIND:

Prepare for life-threatening wind having possible devastating impacts across West Central and Southwest Florida. Potential impacts include:

- Structural damage to sturdy buildings, some with complete roof and wall failures. Complete destruction of mobile homes. Damage greatly accentuated by large airborne projectiles. Locations may be uninhabitable for weeks or months.

### \* SURGE:

Prepare for life-threatening surge having possible devastating impacts across the Tampa Bay region and all of southwest Florida. Potential impacts in this area include:

- Widespread deep inundation, with storm surge flooding greatly accentuated by powerful battering waves. Structural damage to buildings, with many washing away. Damage greatly compounded from considerable floating debris. Locations may be uninhabitable for an extended period.

### \* FLOODING RAIN:

Prepare for life-threatening rainfall flooding having possible extensive impacts across west central and southwest Florida.

Potential impacts include:

- Major rainfall flooding may prompt many evacuations and rescues.

### \* TORNADOES:

Prepare for a dangerous tornado event having possible significant impacts across West Central and Southwest Florida. Potential impacts include:

- The occurrence of scattered tornadoes can hinder the execution of emergency plans during tropical events.





# Tropical Cyclone Watch/Warning Product – TCV

- Info by County Zone
- Contains Watch/Warning coding
- Forecast information by Hazard
  - Where, What, When, How Long
- **NOT** made to READ in entirety - parsed for web display and other apps
- Triggers Emergency Alert System (EAS) & TV Crawls

URGENT - IMMEDIATE BROADCAST REQUESTED  
Irma Local Watch/Warning Statement/Advisory Number 40  
National Weather Service Key West FL AL112017  
1133 PM EDT Fri Sep 8 2017

FLZ078-091145-  
/O.CON.KKEY.SS.W.1011.000000T0000Z-000000T0000Z/  
/O.CON.KKEY.HU.W.1011.000000T0000Z-000000T0000Z/  
Monroe Lower Keys-  
1133 PM EDT Fri Sep 8 2017

...HURRICANE WARNING REMAINS IN EFFECT...  
...STORM SURGE WARNING REMAINS IN EFFECT...

\* LOCATIONS AFFECTED

- Key West
- Big Pine

\* WIND

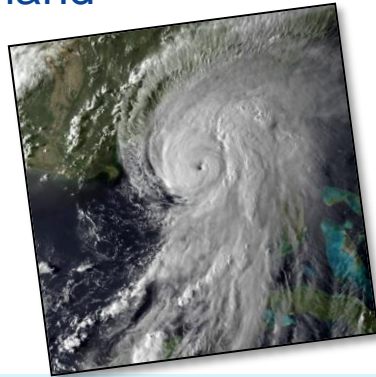
- LATEST LOCAL FORECAST: Equivalent Cat 2 Hurricane force wind
  - Peak Wind Forecast: 80-100 mph with gusts to 110 mph
  - Window for Tropical Storm force winds: this evening until early Monday morning
  - Window for Hurricane force winds: this evening until Sunday afternoon
- CURRENT THREAT TO LIFE AND PROPERTY: Extreme
  - The wind threat has remained nearly steady from the previous assessment.
  - Emergency plans should include a reasonable threat for major hurricane force wind greater than 110 mph of equivalent Category 3 intensity or higher.
- POTENTIAL IMPACTS: Devastating to Catastrophic
  - Structural damage to sturdy buildings, some with complete roof and wall failures. Complete destruction of mobile homes. Damage greatly accentuated by large airborne projectiles. Locations may be uninhabitable for weeks or months.



# Marine Weather Warning - MWW

- All marine zone tropical wind hazards moved to the Marine Weather Warning
- Can issue for offshore storms when impacts are not anticipated on land

**Hurricane Hermine (2016)**  
**No Significant Land Impacts**  
**for Florida East Coast**



URGENT - MARINE WEATHER MESSAGE  
NATIONAL WEATHER SERVICE MELBOURNE FL  
428 PM EDT THU SEP 1 2016

AMZ550-570-022000-  
/O.NEW.KMLB.TR.W.1009.160901T2028Z-000000T0000Z/  
/O.CAN.KMLB.SI.Y.0002.160902T0200Z-160902T2000Z/  
FLAGLER BEACH TO VOLUSIA-BREVARD COUNTY LINE 0-20 NM-  
FLAGLER BEACH TO VOLUSIA-BREVARD COUNTY LINE 20-60 NM-  
428 PM EDT THU SEP 1 2016

...TROPICAL STORM WARNING IN EFFECT...

THE NATIONAL WEATHER SERVICE IN MELBOURNE HAS ISSUED A TROPICAL STORM WARNING.

\* WINDS...HURRICANE HERMINE IS FORECAST TO MOVE ONSHORE THE FLORIDA BIG BEND LATE TONIGHT...THEN CROSS THE NORTH PENINSULA FRIDAY MORNING. AS THE STORM CONTINUES TO MOVE NORTH AND EAST...SUSTAINED WINDS ARE EXPECTED TO INCREASE TO 25 TO 35 KNOTS WITH FREQUENT GUSTS TO TROPICAL STORM FORCE THROUGH EARLY FRIDAY AFTERNOON. STRONGER WINDS MAY OCCUR IN RAINBAND SQUALLS AS THEY MOVE OFFSHORE AND OVER THE ATLANTIC WATERS.

\* WAVES/SEAS...SEAS BUILDING TO 6 TO 8 FEET BEYOND THE IMMEDIATE COAST BY EARLY FRIDAY MORNING.

PRECAUTIONARY/PREPAREDNESS ACTIONS...

A TROPICAL STORM WARNING MEANS SUSTAINED WINDS OF 34 TO 63 KT OR ARE EXPECTED DUE TO A TROPICAL SYSTEM WITHIN 36 HOURS. SMALL CRAFT SHOULD REMAIN IN PORT.

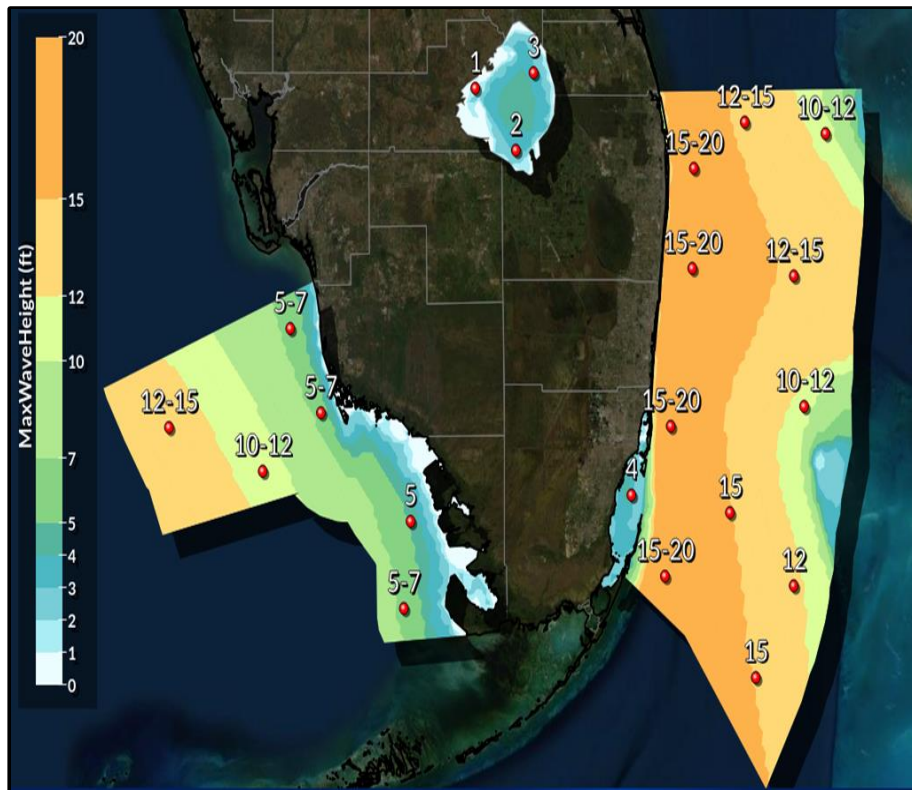


# Marine Outlook

## Tropical Storm Eta



Miami/South Florida  
WEATHER FORECAST OFFICE



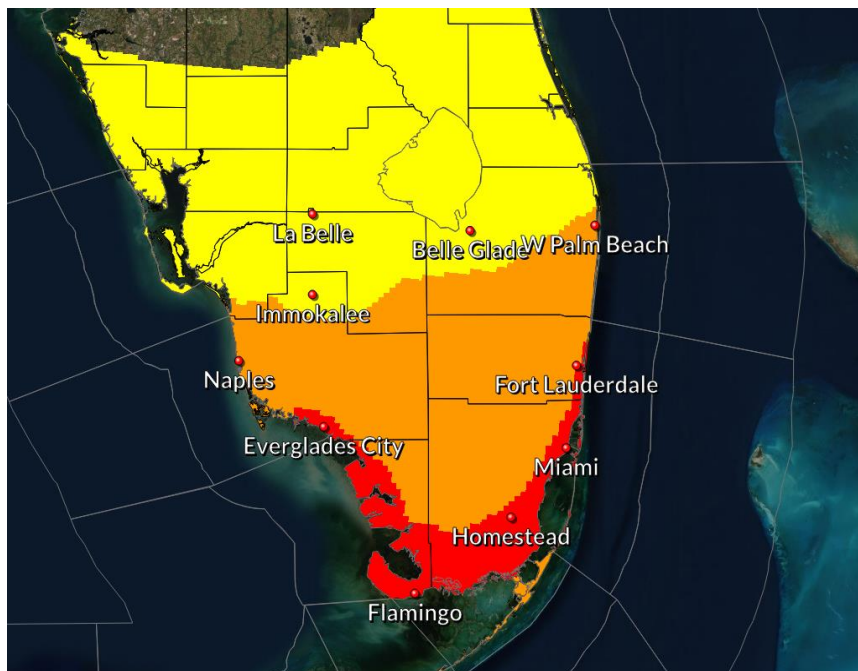
- Atlantic: Linger into Tuesday
  - Max values expected Sunday Night into Monday
- Gulf: Linger into at least Wednesday
  - Max values expected Sunday Night through at least Tuesday

# Wind Threat/Potential Impacts

Tropical Storm Eta



Miami/South Florida  
WEATHER FORECAST OFFICE



## WIND THREAT

Be Safe and Prepare For These Potential Conditions

## Potential Wind Impacts

*Reasonable Worst Case Scenario*

Potential for Winds Greater Than 110 mph

### Potential for Winds 74 to 110 mph

- Considerable roof damage to sturdy buildings, with some having window, door, and garage door failures leading to structural damage
- Mobile homes severely damaged, with some destroyed
- Damage accentuated by airborne projectiles
- Locations may be uninhabitable for weeks
- Many large trees snapped or uprooted along with fences and roadway signs blown over
- Several bridges, causeways, and access routes impassable
- Large areas with power and communications outages

Potential for Winds 58 to 73 mph

Potential for Winds 39 to 57 mph

Potential for Winds Less Than 39 mph

## Locations of Concern

- **Portions of Miami-Dade County, coastal Broward County (east of I-95), portions of coastal Collier County and Mainland Monroe County:** reasonable worst case scenario of hurricane force wind, mainly in gusts, as depicted in the table above
- **South of a Fort Myers – West Palm Beach line:** High-end Tropical storm force wind which would lead to downed trees and branches, power outages, and blowing around of unsecured lightweight objects

## Timing

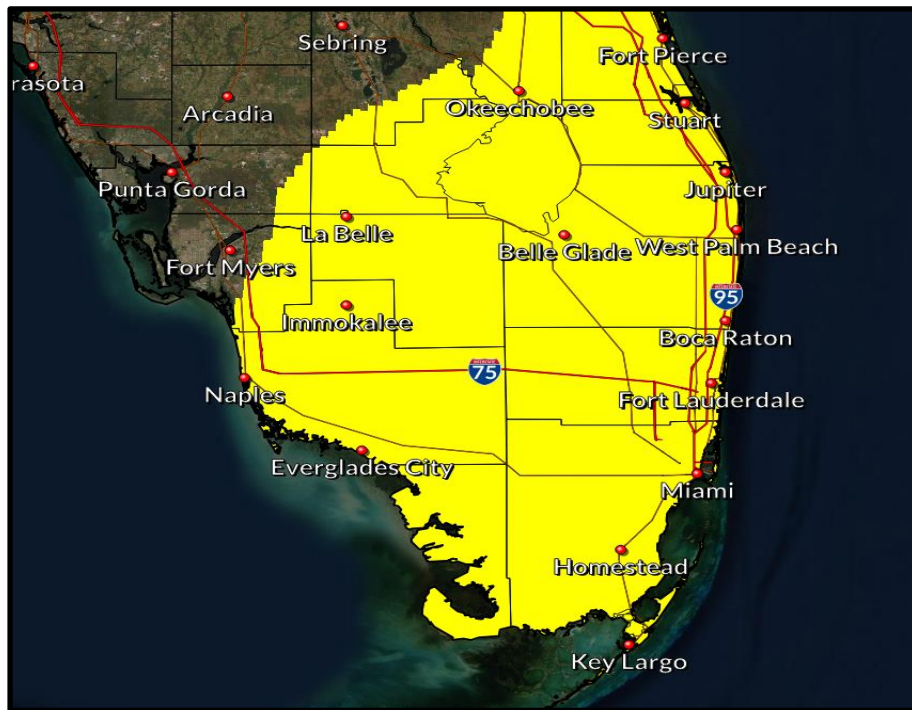
- Sunday afternoon through Monday afternoon (latest along Gulf coast)

# Potential Tornado Impacts

Tropical Storm Eta



Miami/South Florida  
WEATHER FORECAST OFFICE



## TORNADO THREAT

Be Safe and Prepare For These Potential Conditions

## Potential Tornado Impacts

*Reasonable Worst Case Scenario*

Potential for an Outbreak of Tornadoes

Potential for Many Tornadoes

Potential for Several Tornadoes

### Potential for a Few Tornadoes

- The occurrence of isolated tornadoes can hinder the execution of emergency plans during tropical events
- A few places may experience tornado damage, along with power and communications disruptions
- A few locations could see roofs peeled off buildings, mobile homes pushed off foundations or overturned, large tree tops and branches snapped off, shallow-rooted trees knocked over, moving vehicles blown off roads, and small boats pulled from moorings

Tornadoes Not Expected

## Locations of Concern

- All of southern FL

## Timing

- Sunday night and Monday

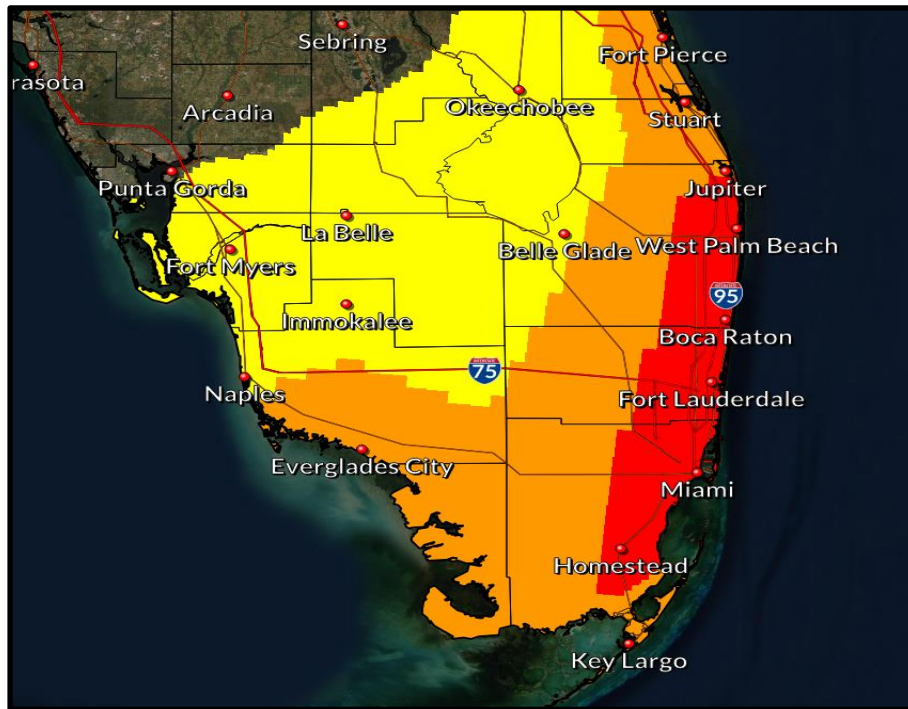


# Rainfall Flooding Impacts

Tropical Storm Eta



Miami/South Florida  
WEATHER FORECAST OFFICE



## FLOODING RAIN THREAT

Be Safe and Prepare For These Potential Conditions

## Potential Flooding Rain Impacts

*Reasonable Worst Case Scenario*

Potential for Extreme Flooding Rain

Potential for Major Flooding Rain

### Potential for Moderate Flooding Rain

- Ditches and canals may quickly become swollen with swift currents and overspill their banks, especially in usually vulnerable spots
- Flood waters can enter some structures
- Rapid inundation at underpasses, low-lying spots, and poor drainage areas possible
- Some streets and parking lots take on moving water as storm drains and retention ponds overflow
- Some road and bridge closures

Potential for Localized Flooding Rain

Little to No Potential For Flooding Rain

## Locations of Concern

- Greatest threat: SE Florida metro areas
- Localized to moderate threat: interior and SW Florida

## Timing

- Through Tuesday

# Potential Storm Surge

## Tropical Storm Eta Impacts



Miami/South Florida  
WEATHER FORECAST OFFICE



### **SURGE THREAT**

Be Safe and Prepare For These Potential Conditions

### **Potential Storm Surge Impacts**

*Reasonable Worst Case Scenario*

Potential for Storm Surge Flooding Greater Than 9 Foot Above Ground

Potential for Storm Surge Flooding Greater Than 6 Foot Above Ground

#### **Potential for Storm Surge Flooding Greater Than 3 Foot Above Ground**

- Areas of inundation with storm surge flooding accentuated by waves
- Damage to several buildings, mainly near the coast
- Sections of near-shore escape routes and secondary roads become weakened or washed out, especially in usually vulnerable low spots
- Major beach erosion with heavy surf breaching dunes
- Moderate damage to marinas, docks, boardwalks, and piers
- Several small craft broken away from moorings, especially in unprotected anchorages

Potential for Storm Surge Flooding Greater Than 1 Foot Above Ground

Little to No Storm Surge Flooding

### **Locations of Concern**

- Highest threat as depicted above from Biscayne Bay to Coastal Collier County

### **Timing**

- East Coast: Late Sunday night and Monday
- Gulf Coast: Monday through Tuesday



# WFO Tropical Product Summary

Be Aware of the Dissemination Caveats for Products

## 2-7 Days Out

**Hazardous  
Weather Outlook**

**Point N Click  
Forecast  
Probability  
Information**

**Partner Briefings**

## Watch/Warning Phase

**Hurricane Local  
Statement (HLS)**

**Tropical Cyclone VTEC  
Product (TCV)**

**Hurricane Threats &  
Impacts Graphics (HTI)**

**Marine Weather Warning  
(MWW)**

## Onset & Impact Phase

**Short Fuse  
Watches and  
Warnings**

**Observational  
Reports During  
and After**





# Port Specific Wind Speed Probability & Timing

Valid 15Z Advisory June 1, 2020

Wind Speed Probability & Timing				
Location	Probability of Tropical Storm Force Winds	Tropical Storm Force Winds Arrival Timing	Probability of Hurricane Force Winds	Hurricane Force Winds Arrival Timing
Port of Miami				
Port Everglades				
Port West Palm Beach				
Port of Fort Pierce				

# Port Specific Wind Speed Probability & Timing



Miami/South Florida

WEATHER FORECAST OFFICE

Tropical Storm Eta

## Wind Speed Probability & Timing

Location	Probability of Tropical Storm Force Winds	Tropical Storm Force Winds Arrival Timing	Probability of Hurricane Force Winds	Hurricane Force Winds Arrival Timing
Port of Miami	50	Sunday Mid-Afternoon to Monday Mid-Afternoon	1	N/A
Port Everglades	40	Sunday Late Afternoon to Monday Early Afternoon	X	N/A
Port West Palm Beach	30	Sunday Late Afternoon/Early Evening to Monday Midday	X	N/A
Port of Fort Pierce	13	Sunday Early Evening to Monday Midday	X	N/A

**IMPORTANT:** times on the left is the time frame in which sustained tropical storm force wind is likely to occur for **PART** of the time, not that it will be continuous for that **ENTIRE** time.

Gusts/squalls (periodic, short-duration) gusts of tropical storm force are much more likely to occur for most of the depicted time frame.

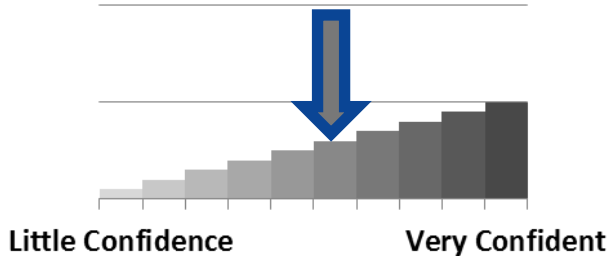


# Key Take-Aways

Hurricane

- Key Messages

## Forecast Confidence



Discussion on Confidence



# Social Media @NWSMiami

**Hurricane Season**  
June 1 – November 30  
[weather.gov/miami](http://weather.gov/miami)  
[hurricanes.gov](http://hurricanes.gov)  
US National Weather Service  
Miami Florida  
7,112 likes · 2,361 talking about this

Government Organization  
Facebook posts do not always reflect the most current information. For current official info, visit: [www.weather.gov/miami](http://www.weather.gov/miami)

Highlights

Status Photo / Video Offer, Event +

What have you been up to?

US National Weather Service Miami Florida  
2 hours ago · 48

Here is the latest 24 hour rainfall map ending at 8 AM Wednesday morning.

**24-Hour Rainfall - Thru 8 AM August 28, 2013**

24-Hour Rainfall - Thru 8 AM August 28, 2013

57 Friends  
Like US National Weather Service Miami Florida

Invite Your Friends to Like this Page

Type a friend's name...

Howard A. Friedman  
Paul Ruscher  
Laurie Carley

Recent Posts by Others

Kev Cook  
Anneli mammatus from a late afternoon storm today (08/27) August 28 at 5:03pm

Annamarie Lopez  
http://youtu.be/MLUHQD90 pretty amazing to see like this. August 20 at 9:36pm

Home Connect Discover Me Search

**Tweets**  
Following  
Followers  
Favorites  
Lists

**Photos and videos**

**NWS Miami** @NWSMiami  
This is an experimental service to explore Twitter use to extend the reach of NWS information. Visit [goo.gl/C9gdi](http://goo.gl/C9gdi) for details and to provide comments.  
Miami, Florida · [srh.noaa.gov/mfi](http://srh.noaa.gov/mfi)

1,716 TWEETS 81 FOLLOWING 3,873 FOLLOWERS

**Tweets** All / No replies

**NWS Miami** @NWSMiami  
Here is the latest 24 hour rainfall map ending at 8 AM Wednesday morning. [srh.noaa.gov/graphiccast.php](http://srh.noaa.gov/graphiccast.php)... #fhw  
Expand

**NWS Miami** @NWSMiami  
Storms from this morning have dissipated, however more isolated storms are possible this afternoon and evening. #fhw  
Expand

**NWS Miami** @NWSMiami  
A marine warning and weather statement are in effect for the Miami-Dade coastal waters. Boaters should use extreme caution. #swf #fhw  
Expand

**NWS Miami** @NWSMiami  
Showers and thunderstorms are approaching I-75 from U-27 to central Collier County. #swf #fhw  
Expand

**NWS Miami** @NWSMiami  
Heavy rain has spread north into #SoFl this morning. Allow extra time for your morning commute.  
Expand

**NWS Miami** @NWSMiami  
Showers and Thunderstorms have pushed off the Collier County coast, however, more storms can redevelop through the evening. #fhw  
Expand

Who to follow  
WINK Weather @winkweather  
The Florida Keys @thefloridakys  
Broward Commission @browardcom

Popular accounts Find trends

Trends  
#MLKDream50  
#MOW50  
#DreamDay  
Oxford Dictionary  
#marchonwashington  
#SMSummit  
Jimmy Carter  
Johnny Football  
I Have a Dream  
Martin Luther King Jr.



# Small Craft Advisory -> Small Craft Warning

- Criteria remains the same  
20-33kt sustained winds

Marine Product	Criteria
Small Craft Exercise Caution - SCEC	15-19 KT (sustained)
Small Craft Advisory - SCA	20-33 KT (sustained)
Gale Warning	34-47 KT (sust or freq gusts**)
Gale Watch <small>*(locally constrained)</small>	Within 36 hours *48 if high confidence
Storm Warning	48-63 KT (sust or freq gusts**)





**NOAA**  
National  
Weather  
Service

# Questions?

