

IMPACTS FOR District 7 (through next 5 days)

Winds – Moderate

Storm Surge – Low

Rainfall/Flash Flooding – Moderate

Tornadoes – Low

Waves - Moderate

TROPICAL STORM BRET BRIEFING

8:15 AM EDT

Wednesday, June 21, 2023

Prepared by:

Nelsie Ramos

*Tropical Analysis and Forecast Branch
NWS National Hurricane Center*



Impacts

Tropical Storm Bret



Tropical Analysis and Forecast Branch
NWS National Hurricane Center

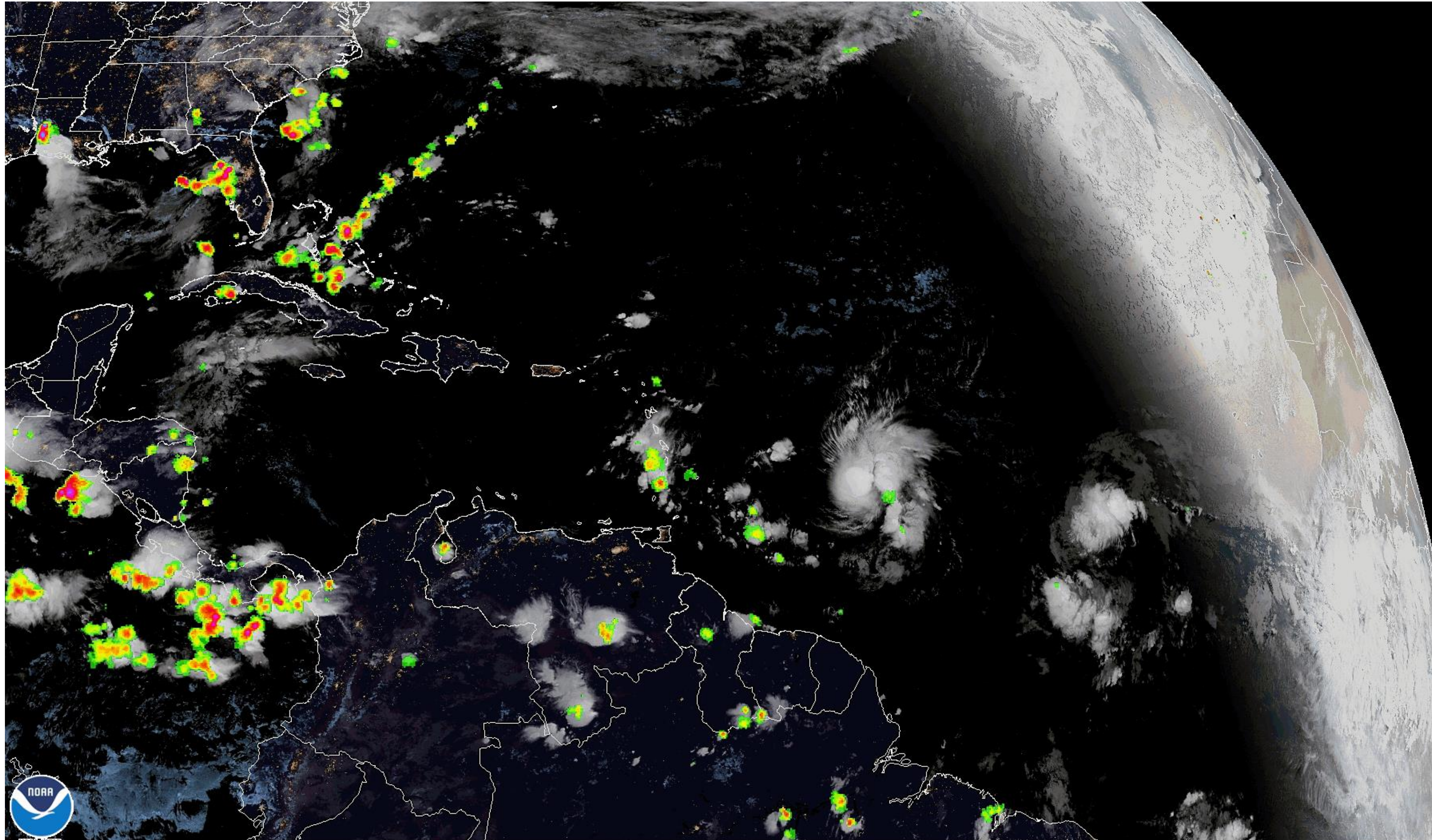
- ✓ **Winds – Moderate**
- ✓ **Rainfall/Flash Flooding – Moderate**
- ✓ **Waves - Moderate**

Current Satellite View

Tropical Storm Bret



Tropical Analysis and Forecast Branch
NWS National Hurricane Center



21 Jun 2023 08:21 NOAA/NESDIS/STAR GOES-East GLM FED over ABI 08:20 Geocolor



6/21/2023 7:53 AM

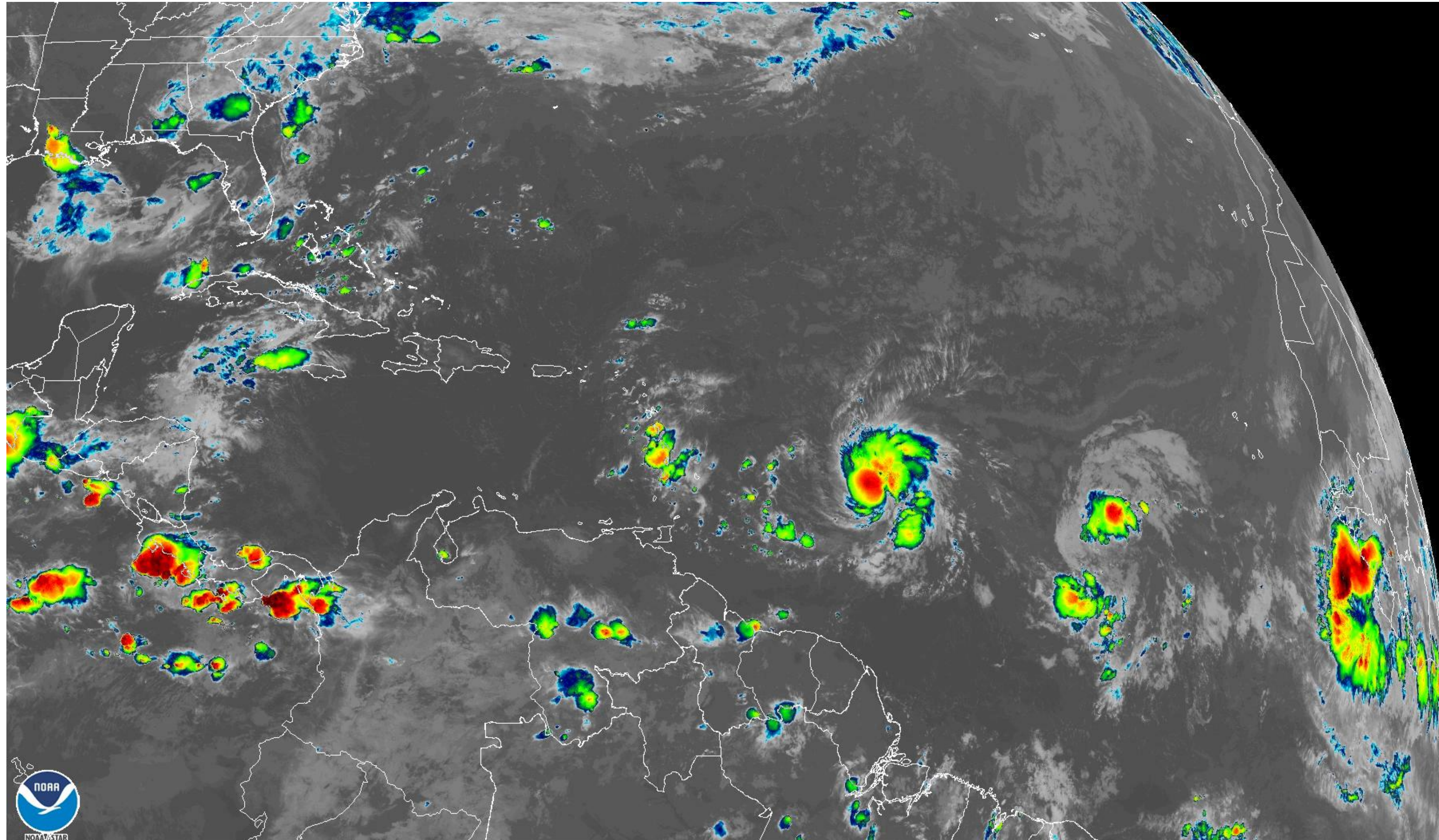
www.nhc.noaa.gov

Current Satellite View

Tropical Storm Bret



Tropical Analysis and Forecast Branch
NWS National Hurricane Center



21 Jun 2023 06:30Z - NOAA/NESDIS/STAR - GOES-East - Band 13 - TAW

6/21/2023 7:53 AM

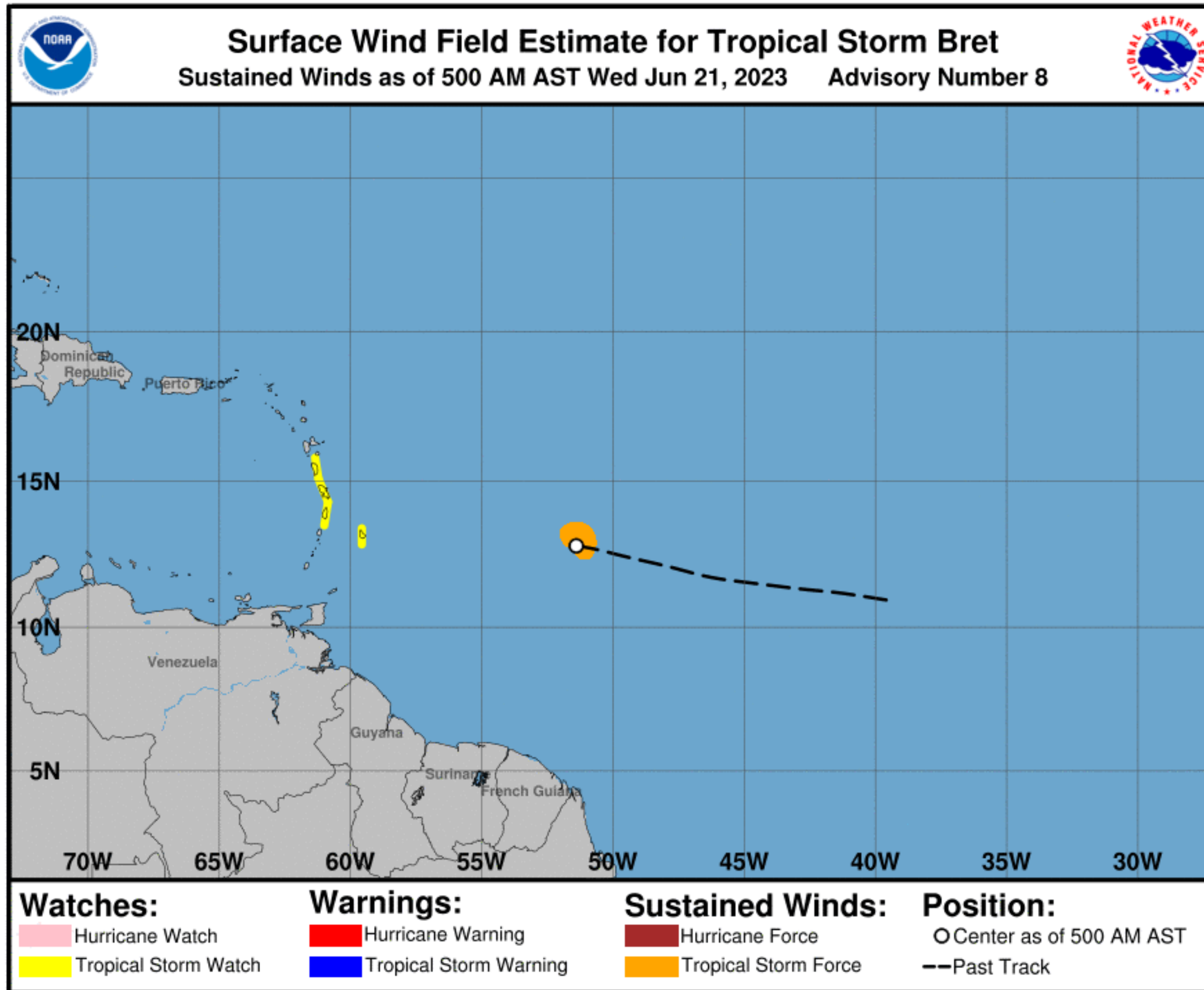
www.nhc.noaa.gov

Situation Overview

Tropical Storm Bret



Tropical Analysis and Forecast Branch
NWS National Hurricane Center



...BRET A LITTLE STRONGER...

SUMMARY OF 500 AM EDT...0900 UTC

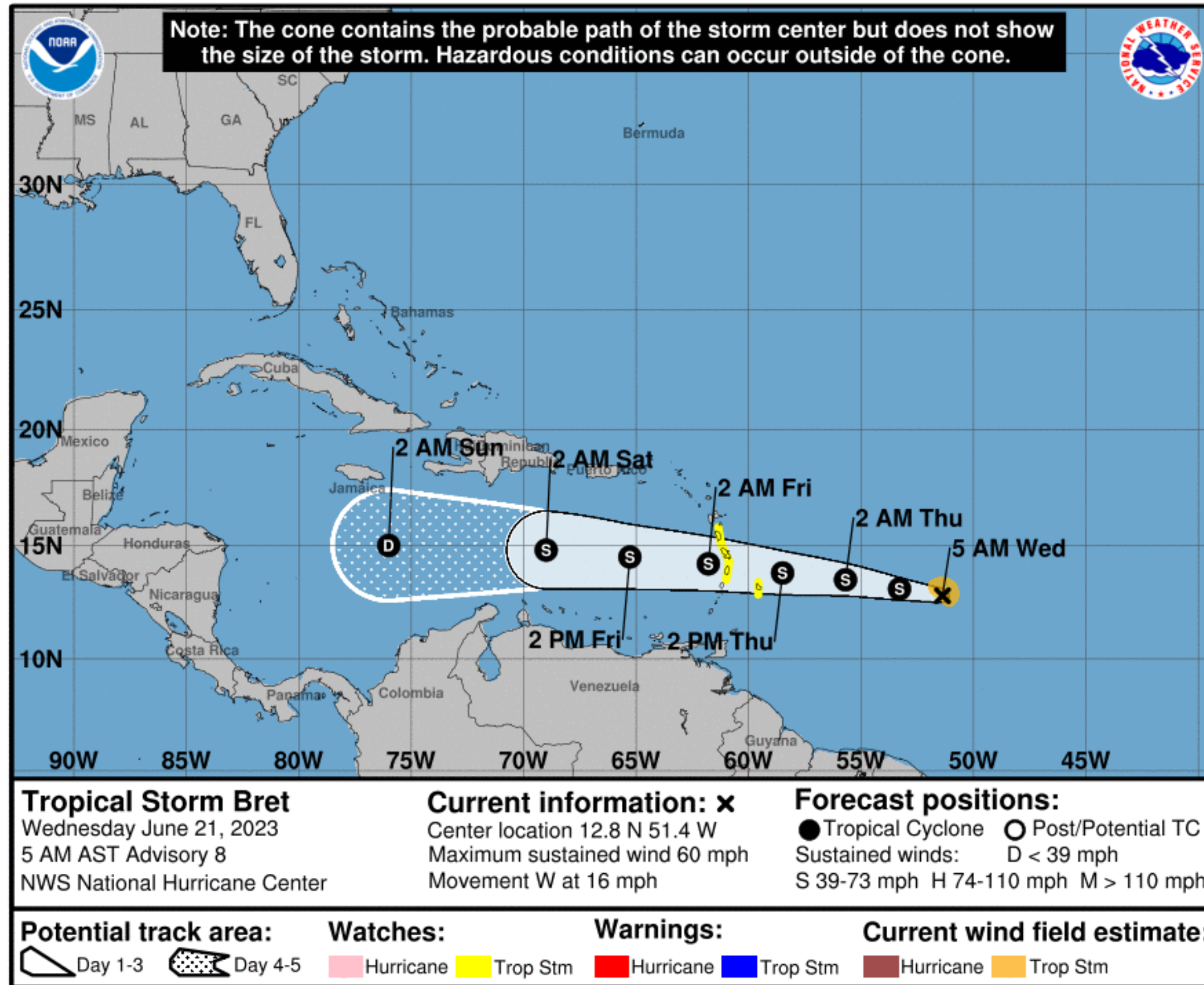
LOCATION...12.8N 51.4W
ABOUT 645 MI...1040 KM E OF THE
WINDWARD ISLANDS
MAXIMUM SUSTAINED WINDS...**50 KT**
PRESENT MOVEMENT...**W** OR 280 DEGREES
AT **14 KT**
WAVES...**16 FT**
50 KT Wind Radii...20NE 0SE 0SW 0NW
34 KT Wind Radii...50NE 40SE 0SW 50NW
12 FT Seas Radii...90NE 45SE 30SW 60NW

Forecast Information

Tropical Storm Bret



Tropical Analysis and Forecast Branch
NWS National Hurricane Center



...Bret forecast to move across the Lesser Antilles Thursday afternoon and Thursday night as a strong tropical storm...

- Some uncertainty in the track and intensity forecast
- Forecast to continue a westward movement
- A slight increase in wind speed expected within the next 36 hours
- Tropical Storm Watch in effect for Barbados, Dominica, Martinique, and St. Lucia
- Additional watches and warnings likely for these and other islands in the Lesser Antilles today
- Bret forecast to weaken into a Tropical Depression Saturday night into Sunday morning

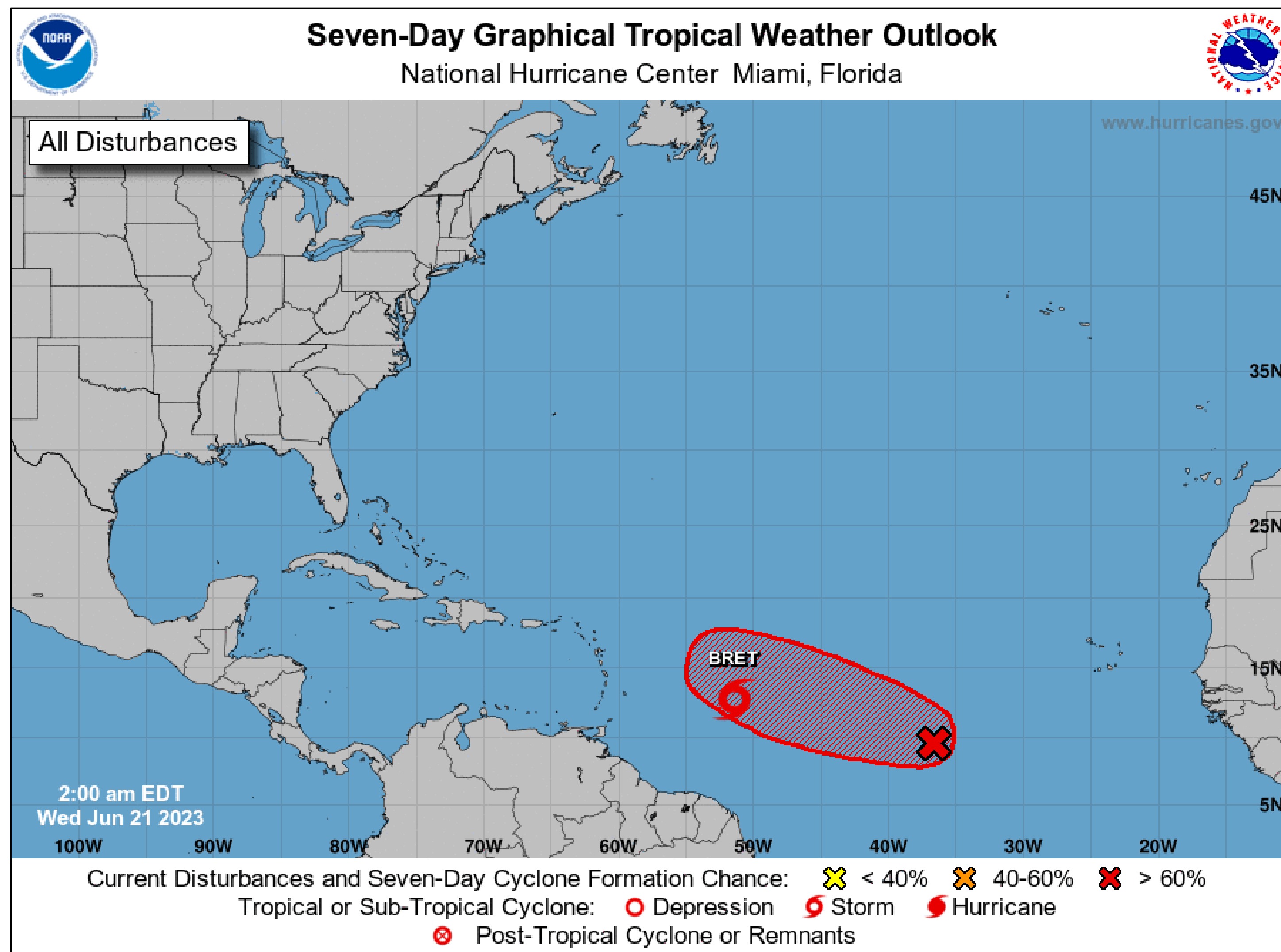
NOTE: Do not focus on the exact track. Impacts can occur well outside the area enclosed by the cone.

Tropical Weather Outlook

Tropical Storm Bret



Tropical Analysis and Forecast Branch
NWS National Hurricane Center



- Tropical wave located in the central Atlantic between Bret and the Cabo Verde Islands
- System has a high potential of becoming a tropical depression during the next couple of days while it moves westward at 10 to 15 KT across the central Atlantic
- **Reminder:** *The hatched area represents a possible development area, not the system's path after development occurs.*

T.S. Wind Speed Probabilities

Tropical Storm Bret



Tropical Analysis and Forecast Branch
NWS National Hurricane Center



Probabilities of sustained tropical storm force winds (34 kt to 63 kt) over the next 5 days, based off this cyclone's wind radii and track:

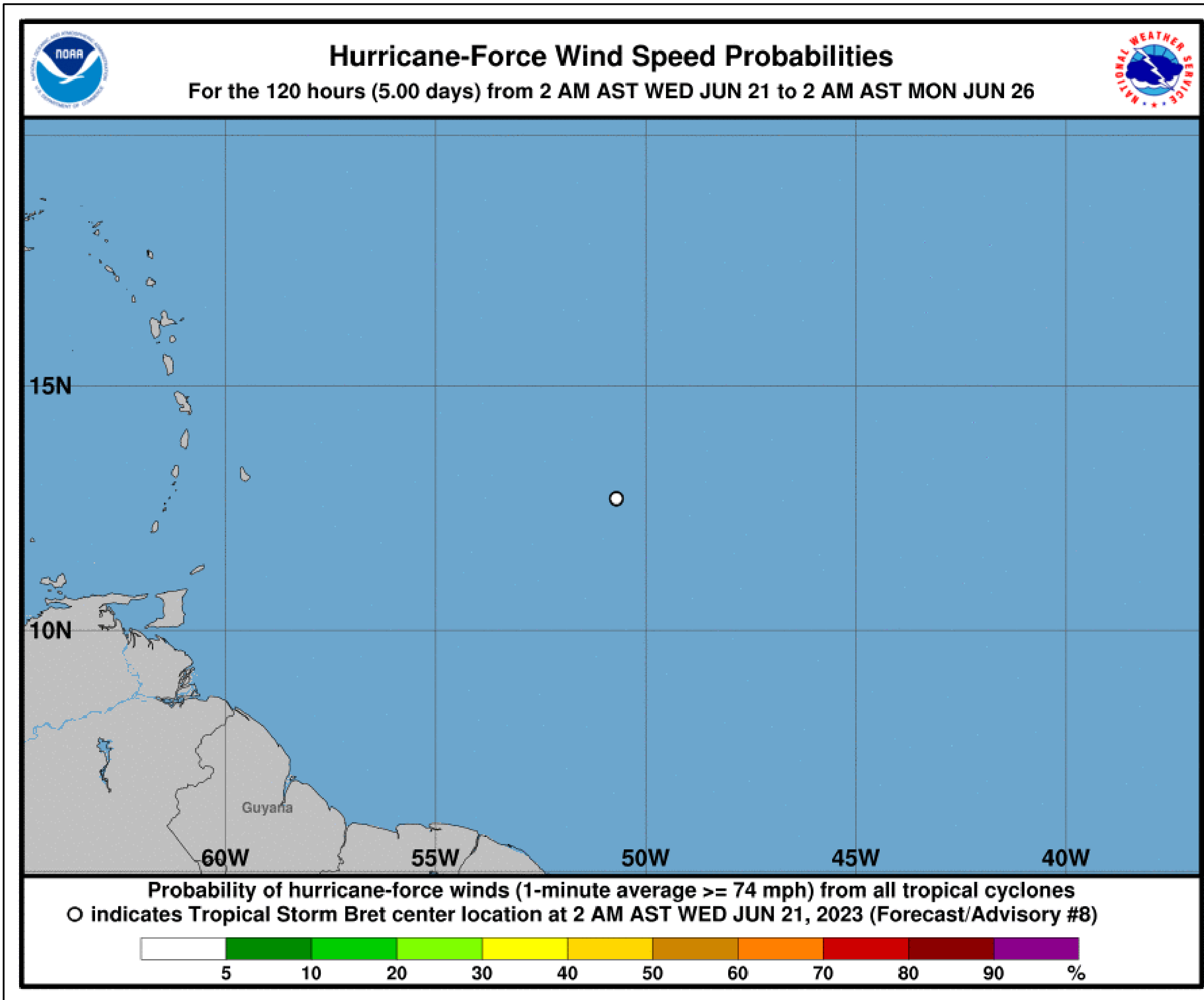
- Ponce, PR – 5%
- Vieques, PR – 5%
- St Croix – 5%
- St Maarten – 5%
- Dominica – 30%
- St Lucia – 40%
- Barbados – 30%
- St Vincent – 20%

Hurricane Wind Speed Probabilities



Tropical Analysis and Forecast Branch
NWS National Hurricane Center

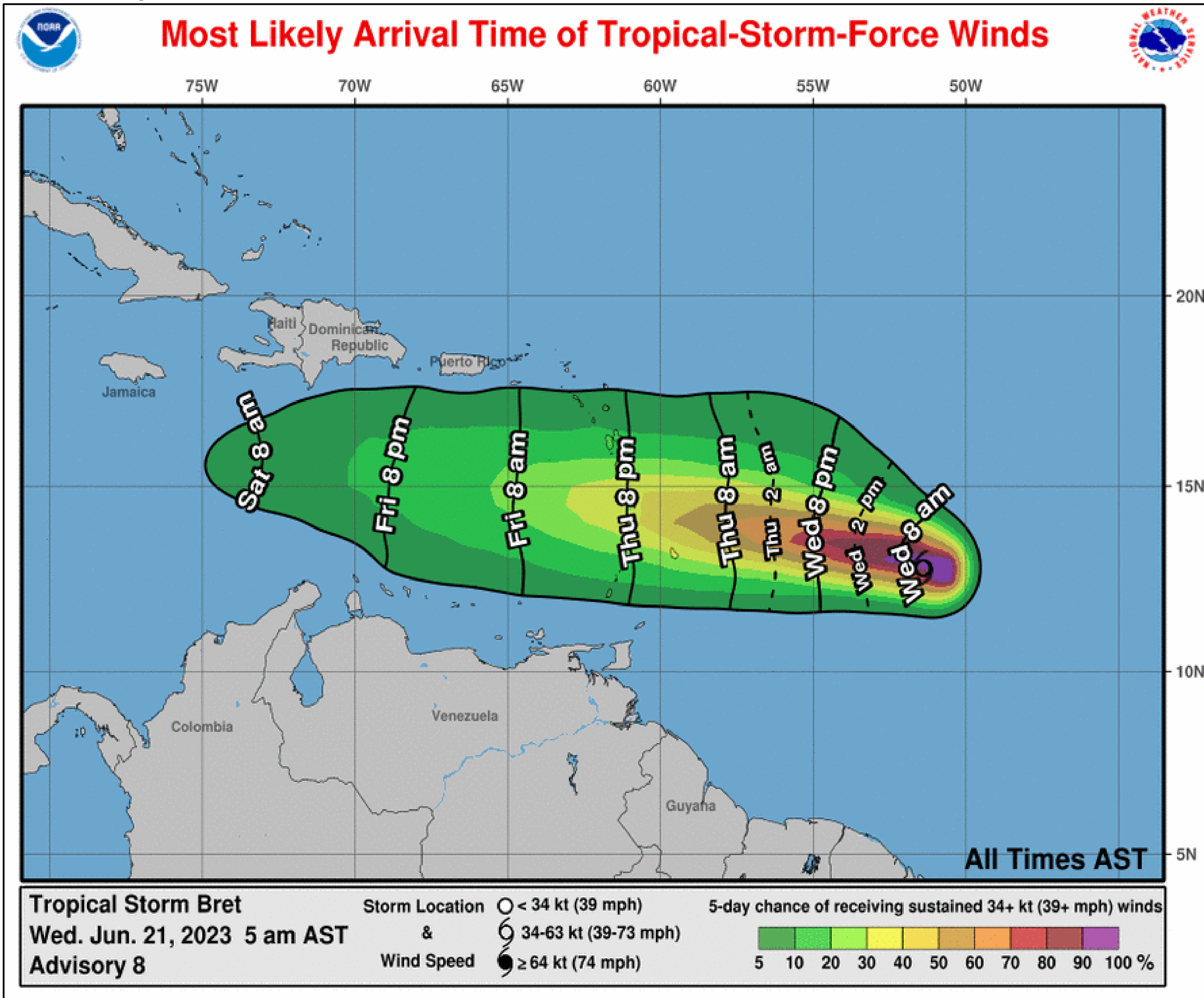
Tropical Storm Bret



- **Zero** Probabilities of sustained hurricane force winds (64 kt +) over the next 5 days, based off this cyclone's wind radii and track



Tropical Storm Bret



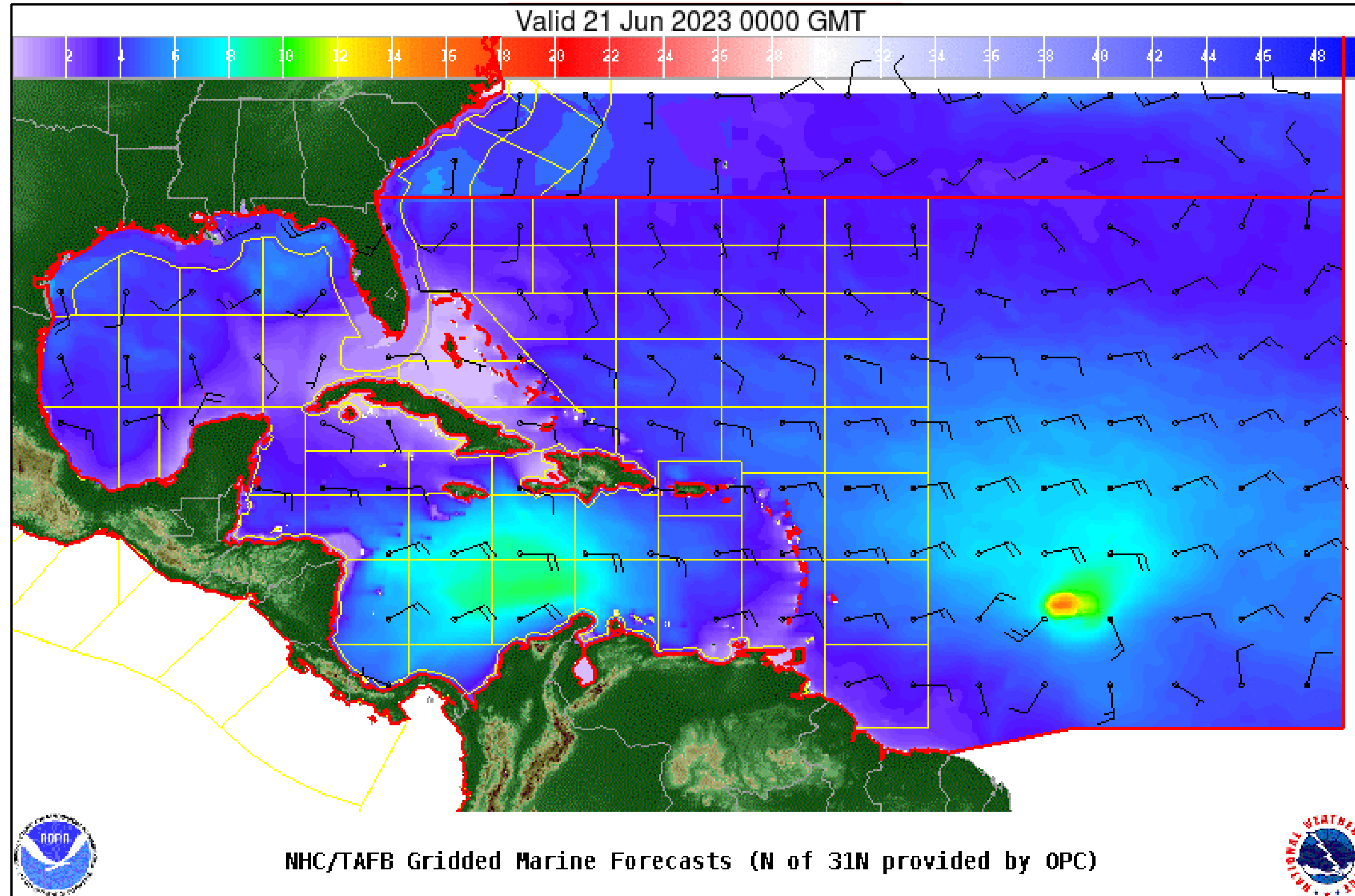
- Most likely time of arrival of Tropical Storm Force Winds (34kt to 63 kt) for this cyclone based off the current track and wind radii:
- Lesser Antilles – late Thursday
- USVI – Thursday night
- PR – Friday morning

Wind And Waves

Tropical Storm Bret



Tropical Analysis and Forecast Branch
NWS National Hurricane Center



Current Conditions **Wednesday Morning**

Peak Winds: 50 KT

Peak Seas: 16 FT

- Wave heights are in feet



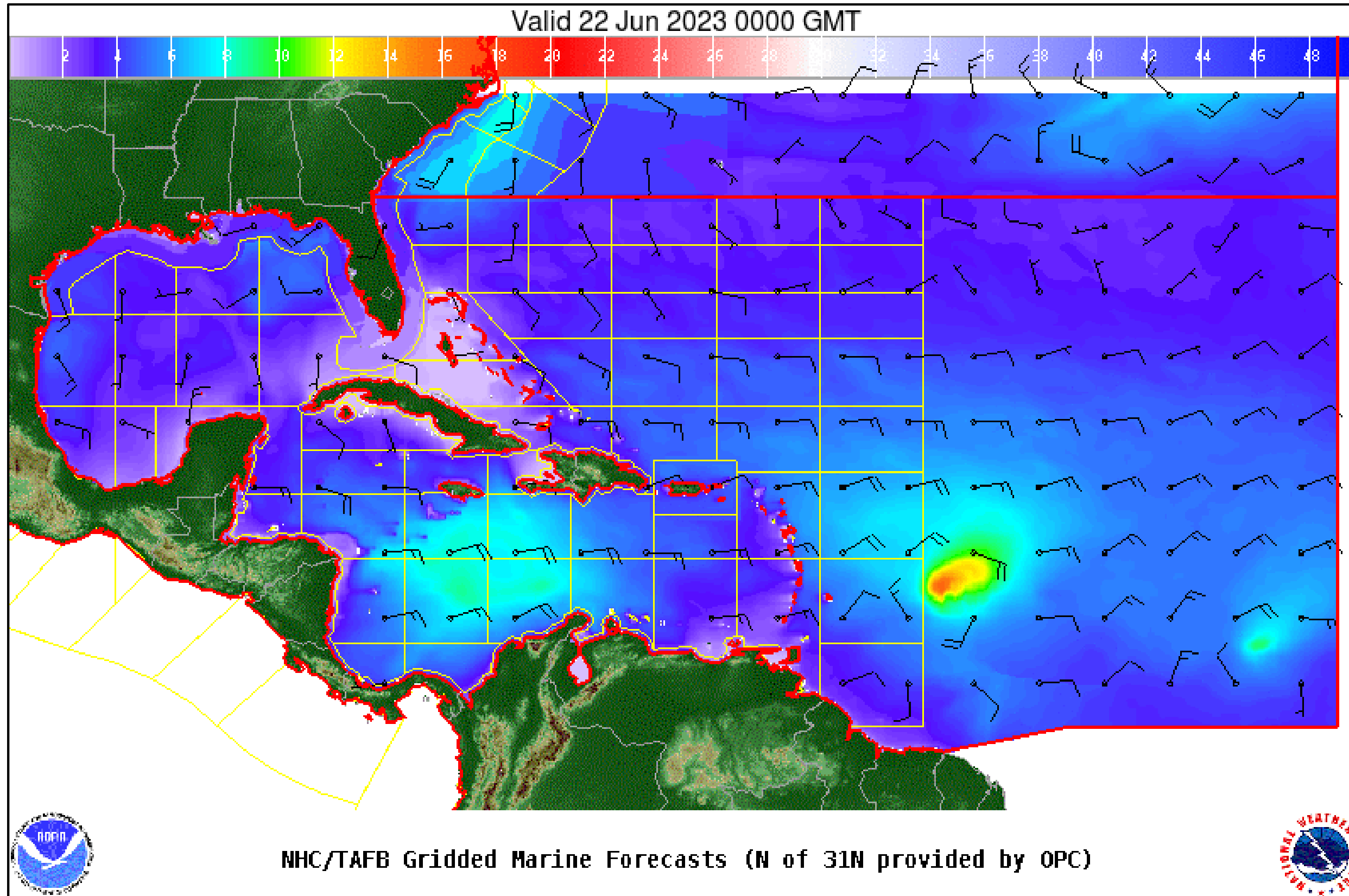
Significant Wave Height (ft)

Wind And Waves

Tropical Storm Bret



Tropical Analysis and Forecast Branch
NWS National Hurricane Center



24 Hour Forecast **Wednesday Evening**
Peak Winds: 55 KT
Peak Seas: 22 FT

- Wave heights are in feet



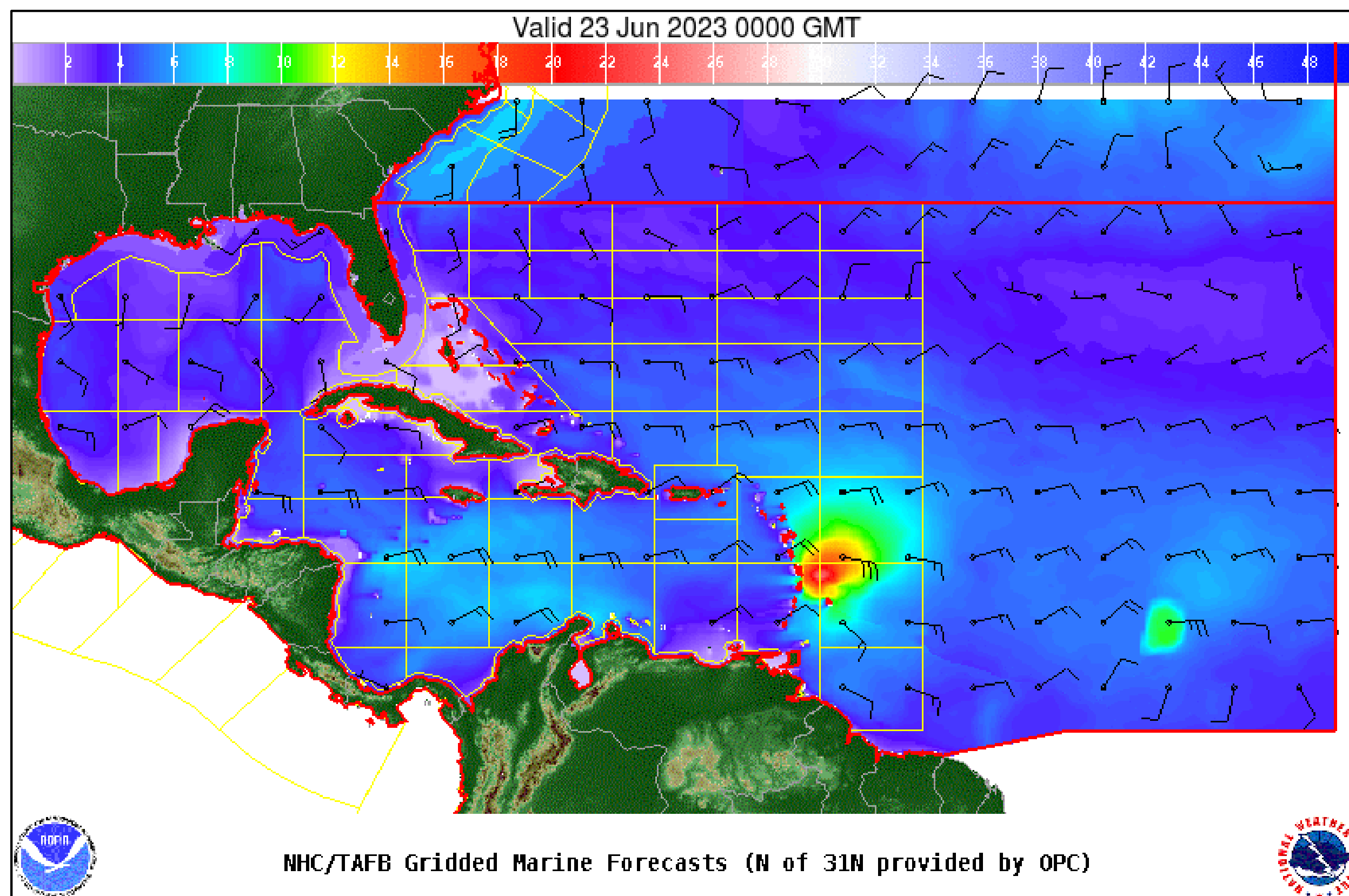
Significant Wave Height (ft)

Wind And Waves

Tropical Storm Bret



Tropical Analysis and Forecast Branch
NWS National Hurricane Center

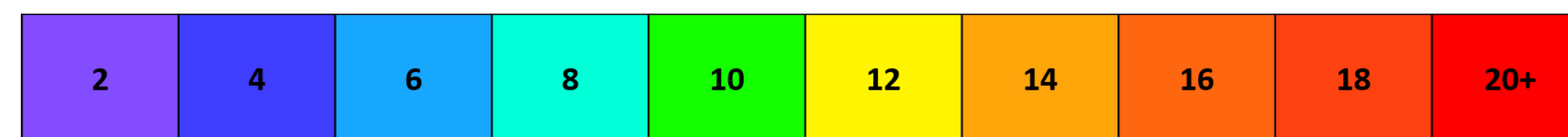


48 Hour Forecast **Thursday Evening**

Peak Winds: 50 KT

Peak Seas: 22 FT

- Wave heights are in feet



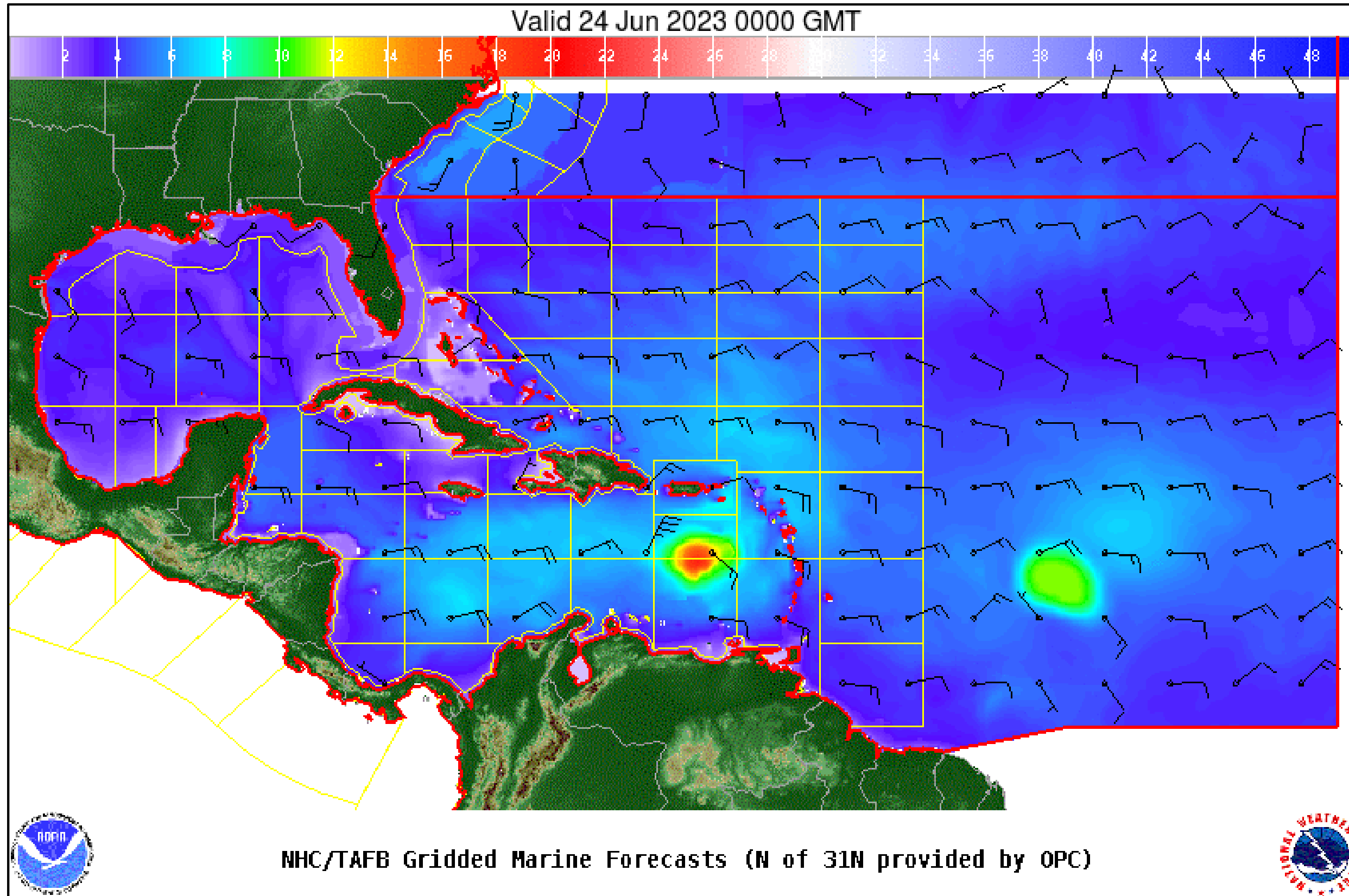
Significant Wave Height (ft)

Wind And Waves

Tropical Storm Bret



Tropical Analysis and Forecast Branch
NWS National Hurricane Center



72 Hour Forecast **Friday Evening**
Peak Winds: 40 KT
Peak Seas: 18

- Wave heights are in feet



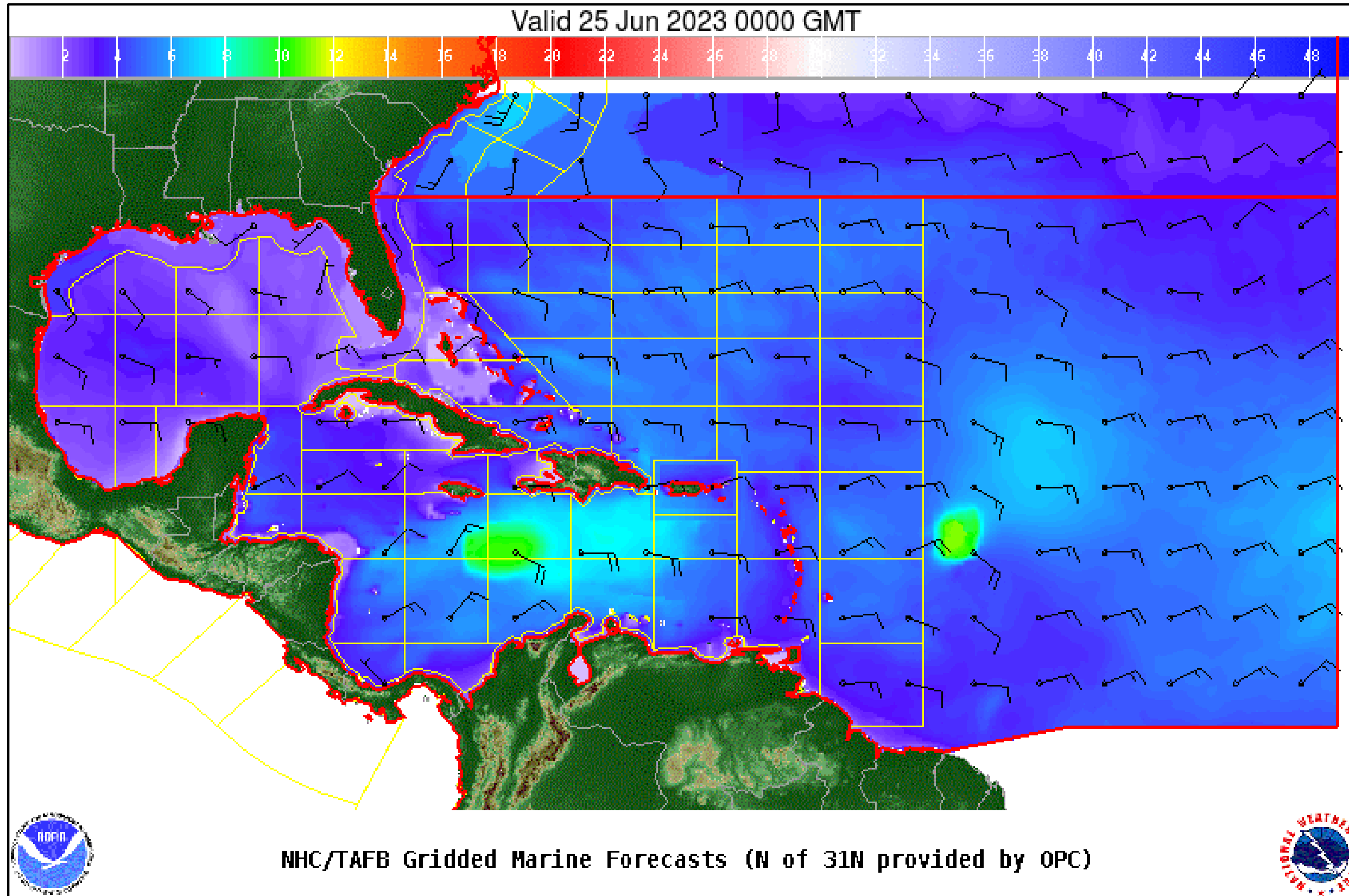
Significant Wave Height (ft)

Wind And Waves

Tropical Storm Bret



Tropical Analysis and Forecast Branch
NWS National Hurricane Center



96 Hour Forecast **Saturday Evening**

Peak Winds: 35 KT

Peak Seas: 15 FT

- Wave heights are in feet



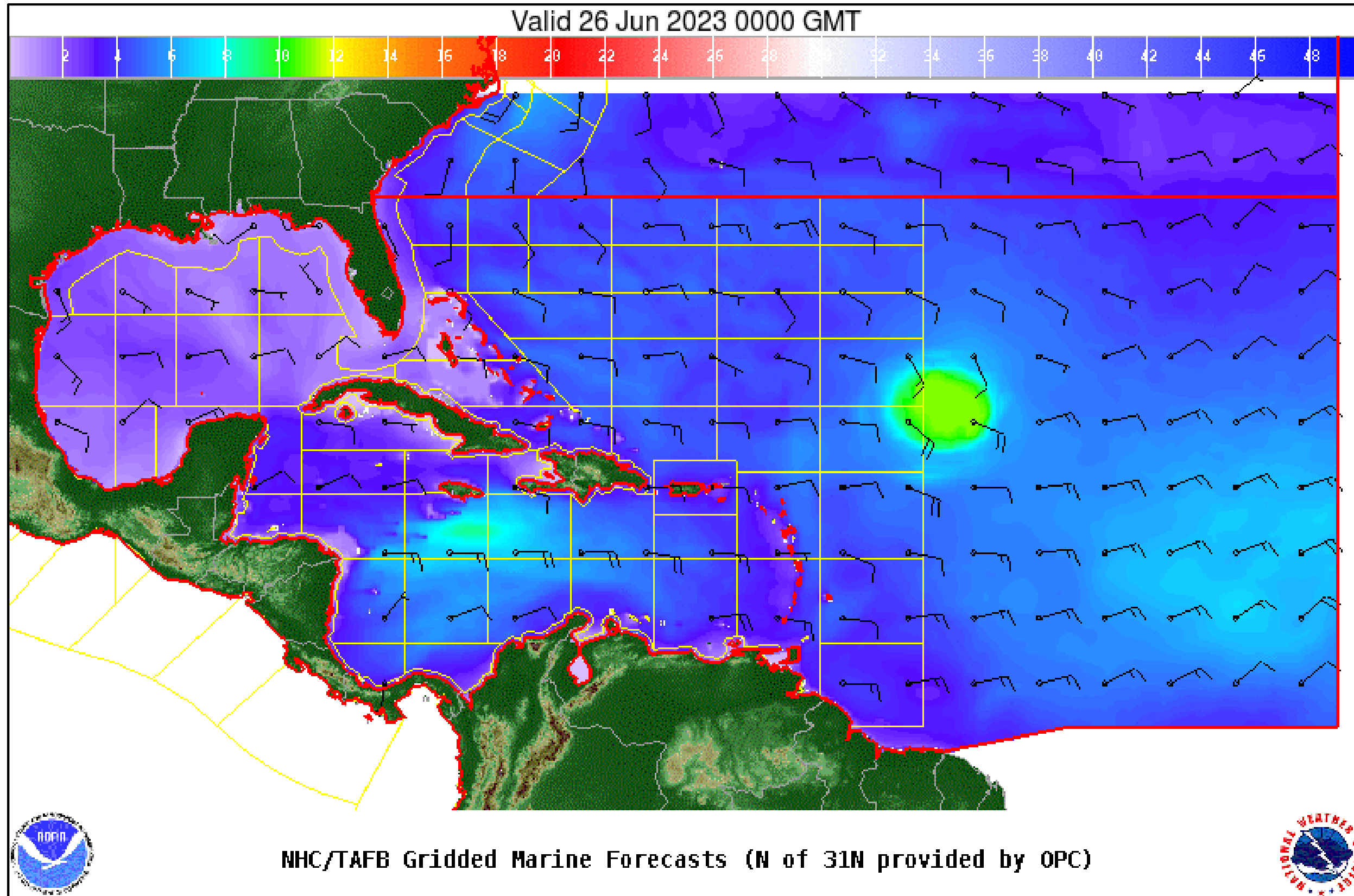
Significant Wave Height (ft)

Wind And Waves

Tropical Storm Bret

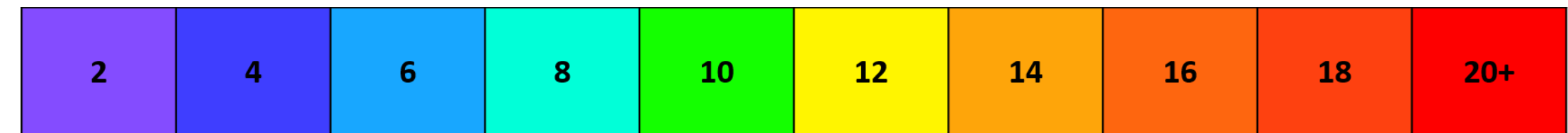


Tropical Analysis and Forecast Branch
NWS National Hurricane Center



120 Hour Forecast **Sunday Evening**
Peak Winds: 30 KT
Peak Seas: 11 FT

- Wave heights are in feet



Significant Wave Height (ft)

Expected Storm Total Rainfall

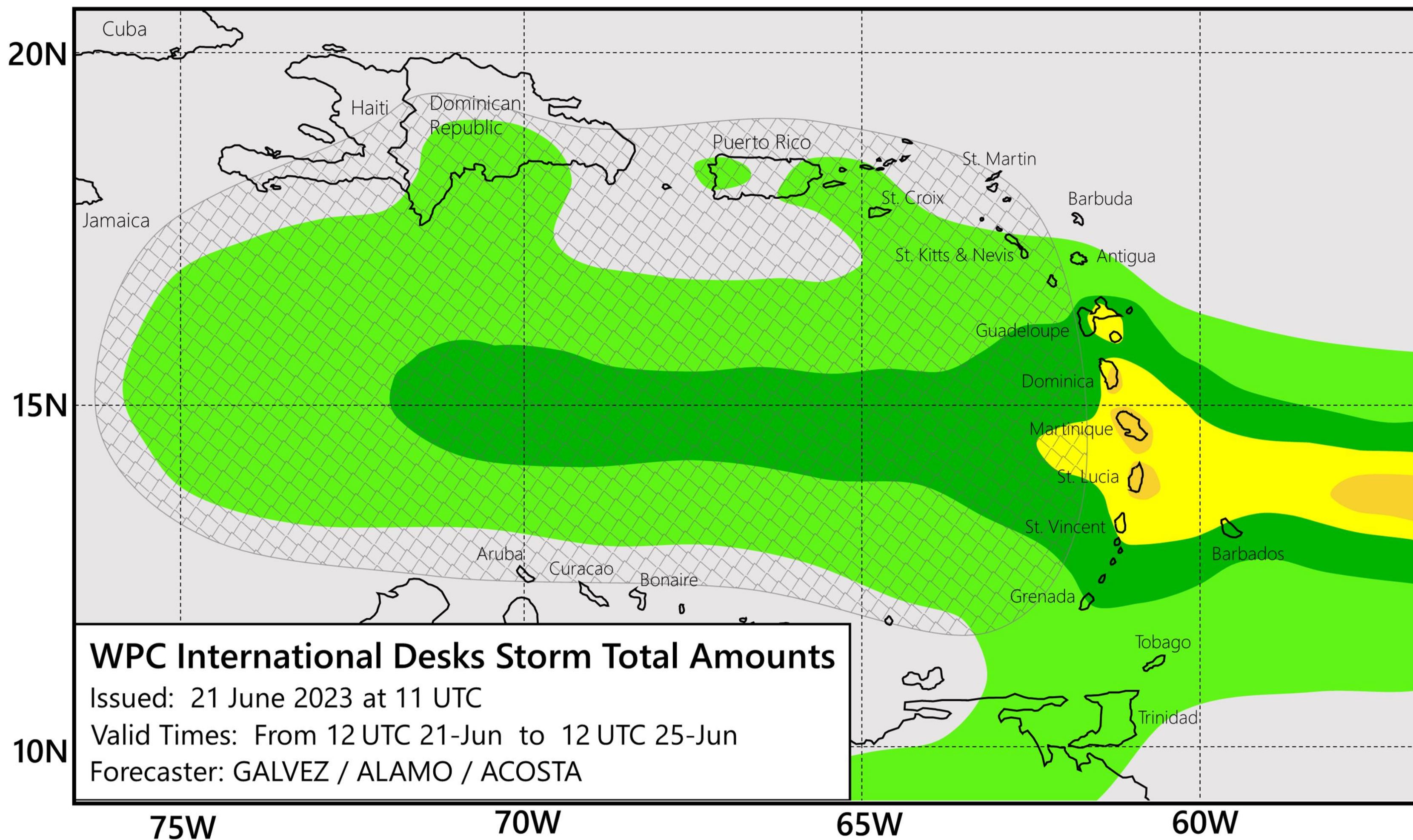


Tropical Analysis and Forecast Branch
NWS National Hurricane Center

Tropical Storm Bret

Images from NWS Weather Prediction Center

Tropical Storm Bret Total Rainfall



Rainfall	
inches	mm
30+	750+
20-30	500-750
16-20	400-500
12-16	300-400
8-12	200-300
6-8	150-200
4-6	100-150
2-4	50-100
1-2	25-50

 Low Confidence



NOTE
 This forecast is for planning purposes. A detailed official forecast will be issued by the respective National Hydro Meteorological Service.

Key Messages

Tropical Storm Bret



Tropical Analysis and Forecast Branch
NWS National Hurricane Center




Key Messages for Tropical Storm Bret

Advisory 8: 5:00 AM AST Wed Jun 21, 2023

1. Bret is forecast to approach the Lesser Antilles through Thursday morning and then move across those islands Thursday afternoon and Thursday night as a strong tropical storm, bringing a risk of flooding from heavy rainfall, strong winds, and dangerous waves along the coast.

2. Given the uncertainty in the track and intensity forecasts, it is too early to specify the location and magnitude of where Bret's associated hazards could occur. A Tropical Storm Watch is in effect for Barbados, Dominica, Martinique, and St. Lucia, and additional watches and warnings are likely for these and other islands in the Lesser Antilles today.




Tropical Storm Bret
Wednesday June 21, 2023
5 AM AST Advisory 8
NWS National Hurricane Center

Current information: x
Center location 12.8 N 51.4 W
Maximum sustained wind 60 mph
Movement W at 16 mph

Forecast positions:
● Tropical Cyclone ○ Post-Potential TC
Sustained winds: D < 39 mph
S 39-73 mph H 74-110 mph M > 110 mph

Potential track area: Day 1-3 Day 4-5
Watches: Hurricane Trop Stm
Warnings: Hurricane Trop Stm
Current wind field estimate:

Most Likely Arrival Time of Tropical-Storm-Force Winds



Tropical Storm Bret
Wed. Jun. 21, 2023 5 am AST
Advisory 8

Storm Location ○ = 34 kt (39 mph) ○ = 64 kt (74 mph)
5-day chance of receiving sustained 34+ kt (39+ mph) winds
Wind Speed ● = 64 kt (74 mph) 5 10 20 30 40 50 60 70 80 90 100 %

For more information go to hurricanes.gov

Marine Key Messages:

- Strong Tropical Storm to affect Lesser Antilles Thu afternoon and Thu night
- Peak winds and seas expected within the next 36 to 48 hours
 - 55 KT
 - 22 FT

IMPACTS FOR **District 7** (through next 5 days)

Winds – **Moderate**

Storm Surge – **Low**

Rainfall/Flash Flooding – **Moderate**

Tornadoes – **Low**

Waves – **Moderate**



TROPICAL STORM BRET BRIEFING

You can contact the Tropical Analysis and Forecast Branch at
305-229-4424

*The Next Briefing Will Be:
Thursday 8:00 AM EDT*

You can always find get the latest graphics and information for this storm at www.hurricanes.gov



NHC_TAFB

www.nhc.noaa.gov