

IMPACTS FOR D7 (through next 5 days)

Winds – High

Storm Surge – Moderate

Rainfall/Flash Flooding – Moderate

Tornadoes – Moderate

Waves - Moderate

TROPICAL STORM ELSA BRIEFING



4:00 PM EDT
Tuesday July 6, 2021

Prepared by:

Scott Stripling

*Tropical Analysis and Forecast Branch
NWS National Hurricane Center*

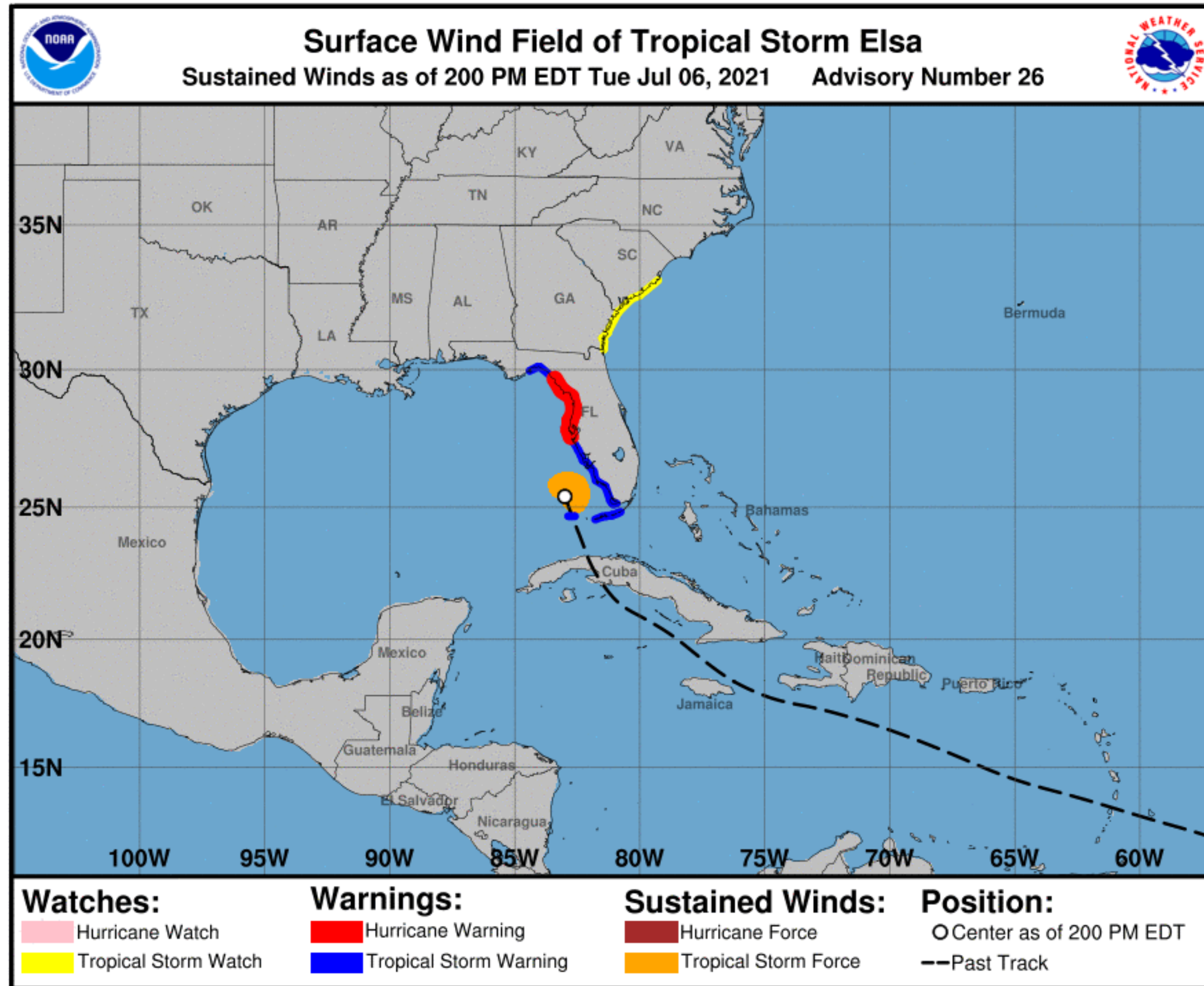


Situation Overview

Tropical Storm Elsa



Tropical Analysis and Forecast Branch
NWS National Hurricane Center



...Elsa moving northward offshore of SW Florida and will strengthen to a Hurricane this evening...

Summary of 200 PM EDT... 1800 UTC...
Information

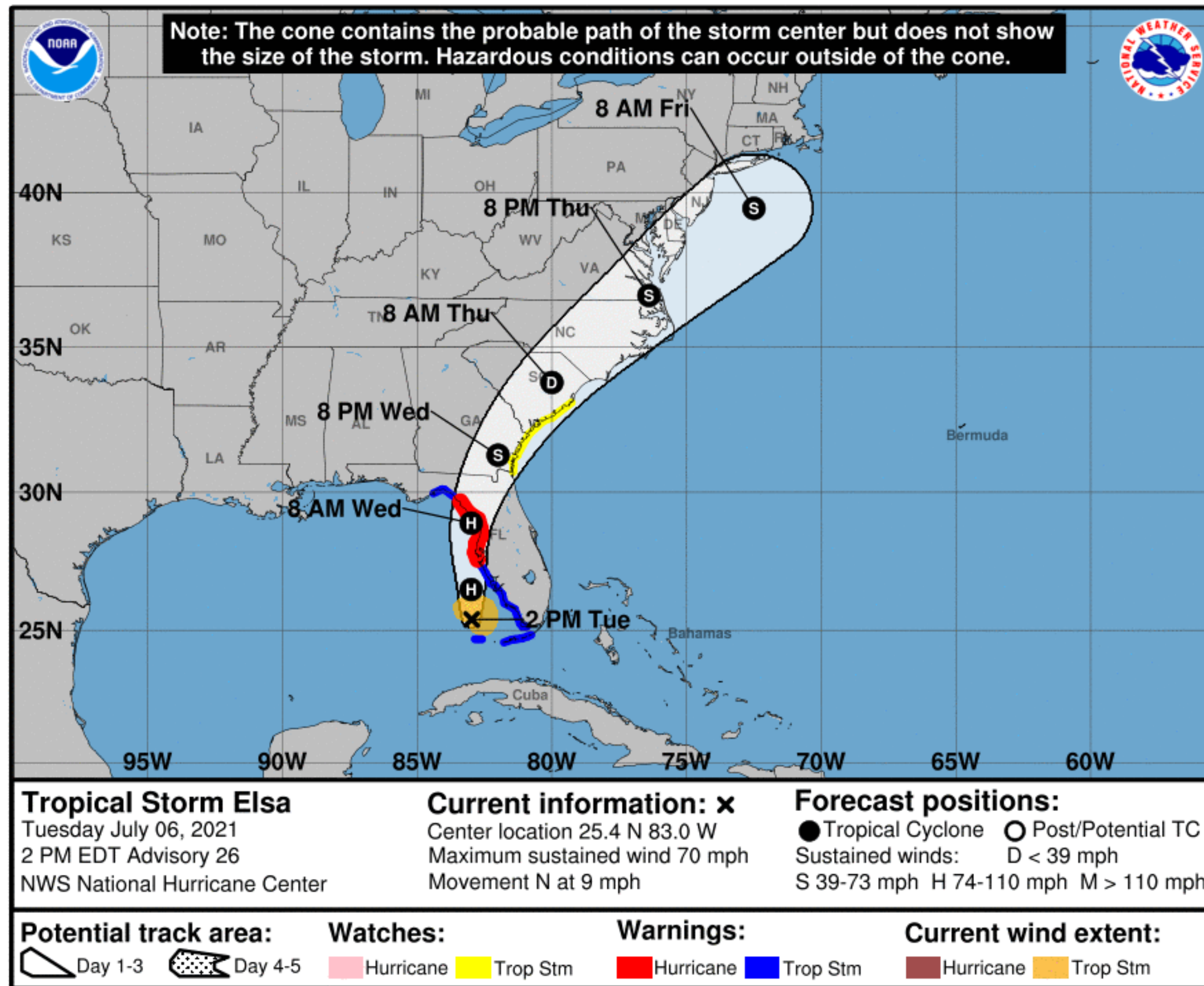
Location... 25.4N 83.0W
About 85 nm...NW of Key West, FL
About 155 nm...S of Tampa FL
Maximum Sustained Winds...60 kt
Present Movement...360 degrees at 8 kt
Minimum Central Pressure...1000 mb

Forecast Information

Tropical Storm Elsa



Tropical Analysis and Forecast Branch
NWS National Hurricane Center



- Elsa is exiting the Lower Florida Keys with tropical storm force winds still extending SE across the Key West area. Elsa has begun the expected northward motion and will move generally parallel to the SW coast of Florida this evening, and then begin to move closer to the coast as it continues northward tonight.
- Elsa expected to strengthen to a Hurricane this evening. Tropical storm conditions, squalls and bands of Tstorms, spread northward across the Gulf waters near and offshore of SW Florida this evening and shift N of Ft Meyers and Port Charlotte to the Tampa Bay this evening through tonight.
- White swath of potential track is the probable track error added to each side of the forecast track through day 3
- Hatched swath of potential track is 67th percentile error added to each side of the forecast track days 4-5

** Swaths are calculated using 67th percentile errors and actual track may be well inside, or possibly outside the potential track areas indicated.

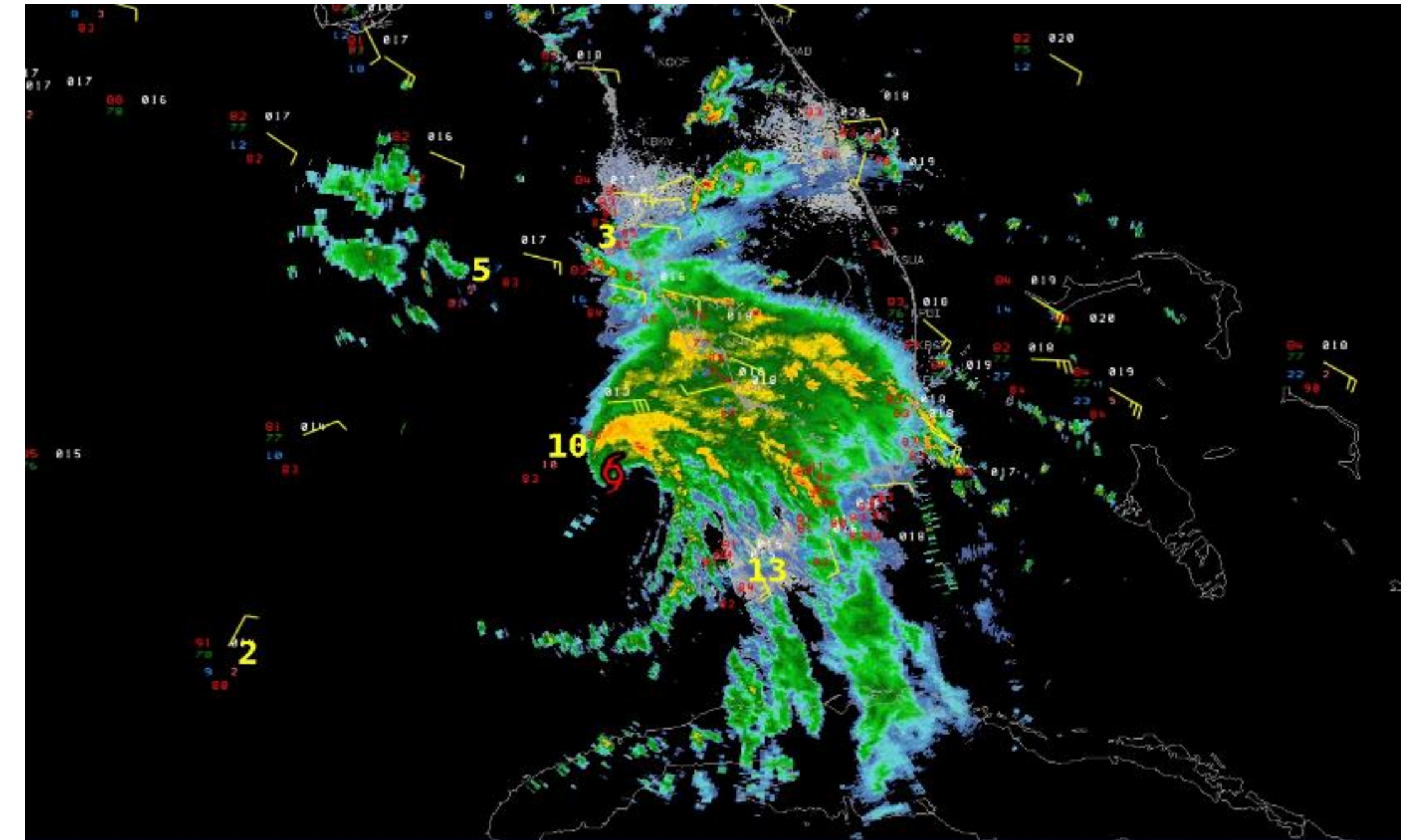
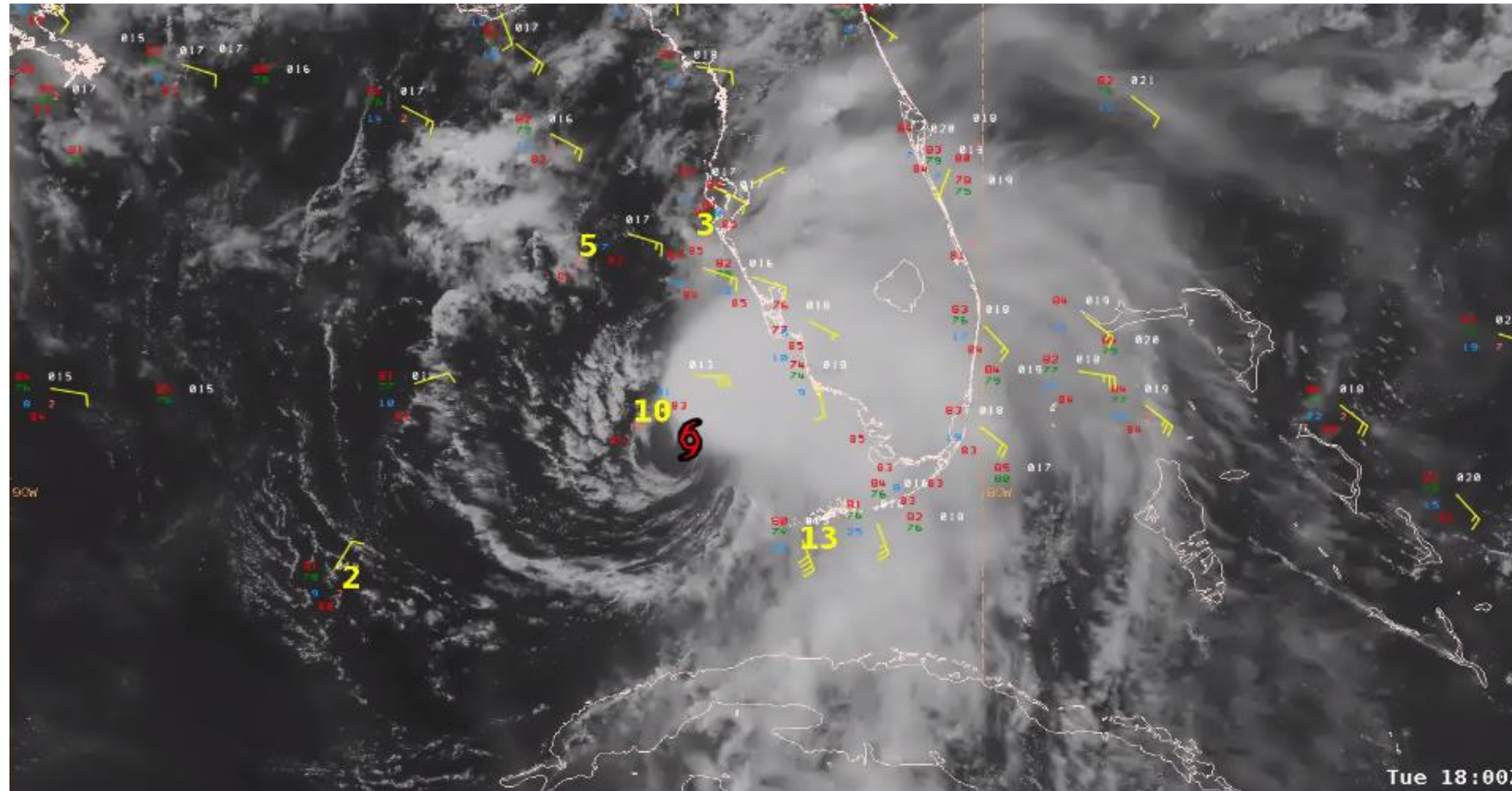
NOTE: Do not focus on the exact track. Impacts can occur well outside the area enclosed by the cone.

Graphical Overview

Tropical Storm Elsa at 1800 UTC or 2 pm



Tropical Analysis and Forecast Branch
NWS National Hurricane Center

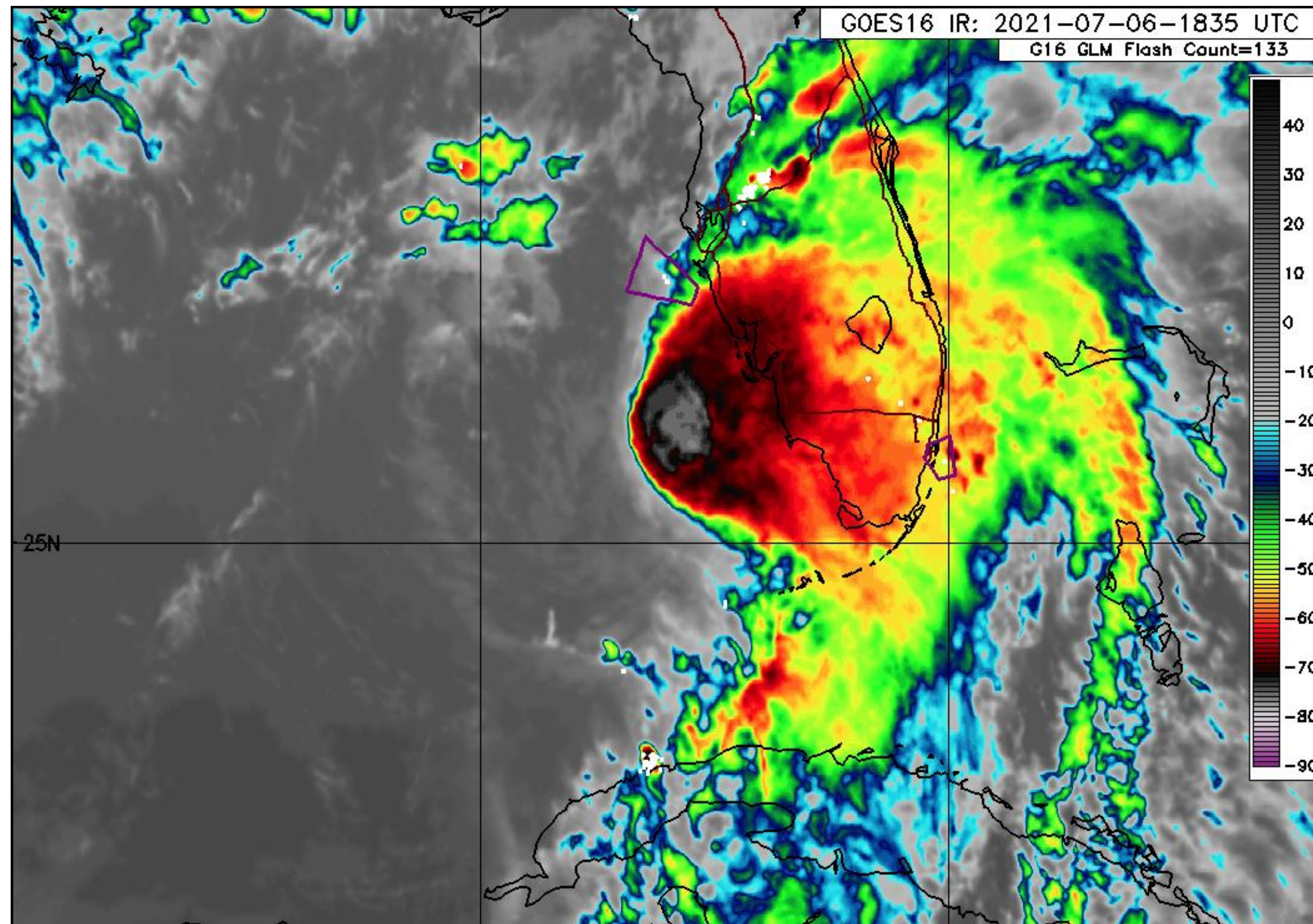


Current Satellite View

Tropical Storm Elsa



Tropical Analysis and Forecast Branch
NWS National Hurricane Center



...Elsa moving northward offshore of SW Florida and will strengthen to a Hurricane this evening...

Summary of 200 PM EDT... 1800 UTC... Information

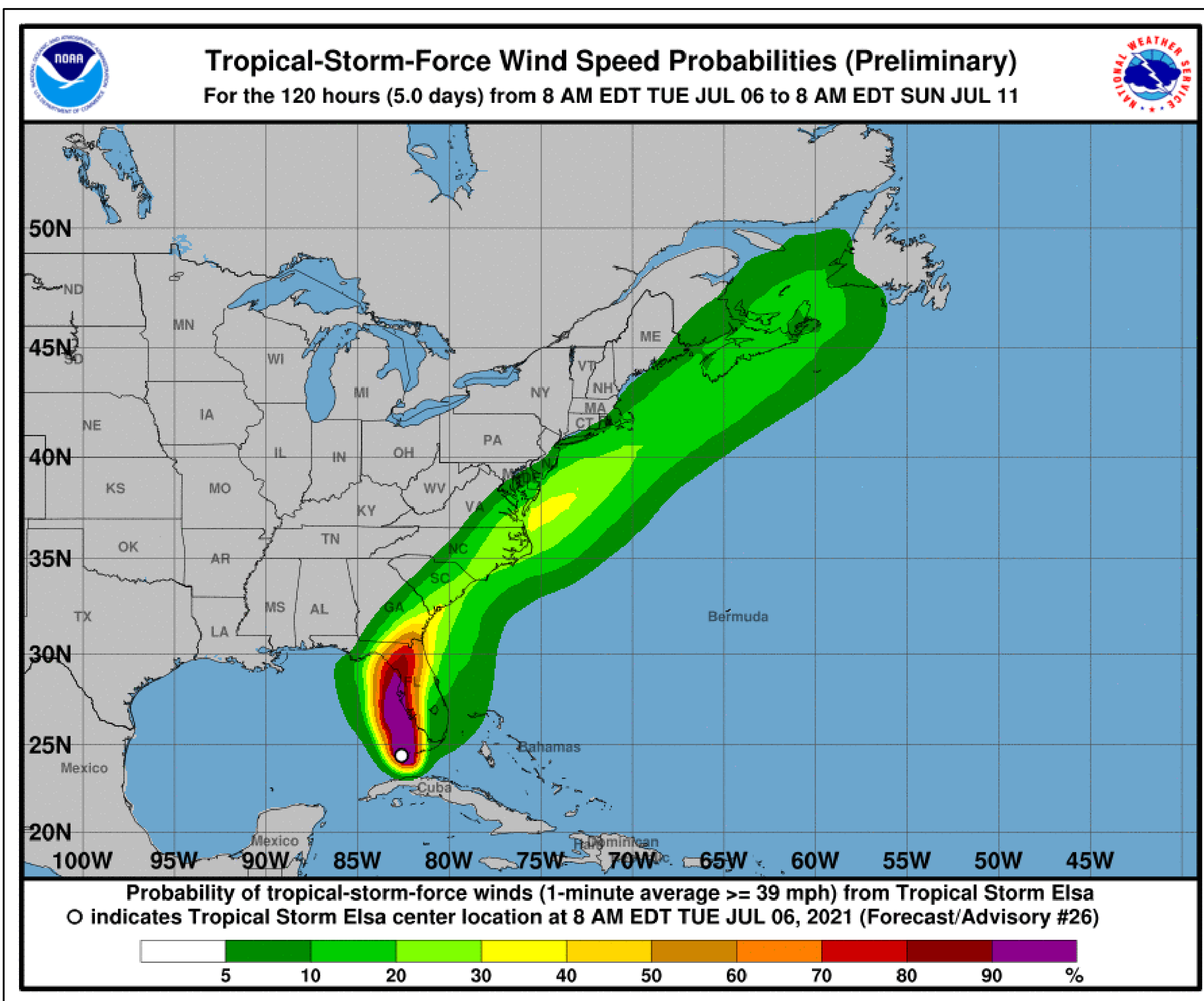
Location... 25.4N 83.0W
About 85 nm...NW of Key West, FL
About 155 nm...S of Tampa FL
Maximum Sustained Winds...60 kt
Present Movement...360 degrees at 8 kt
Minimum Central Pressure...1000 mb

T.S. Wind Speed Probabilities

Tropical Storm Elsa



Tropical Analysis and Forecast Branch
NWS National Hurricane Center



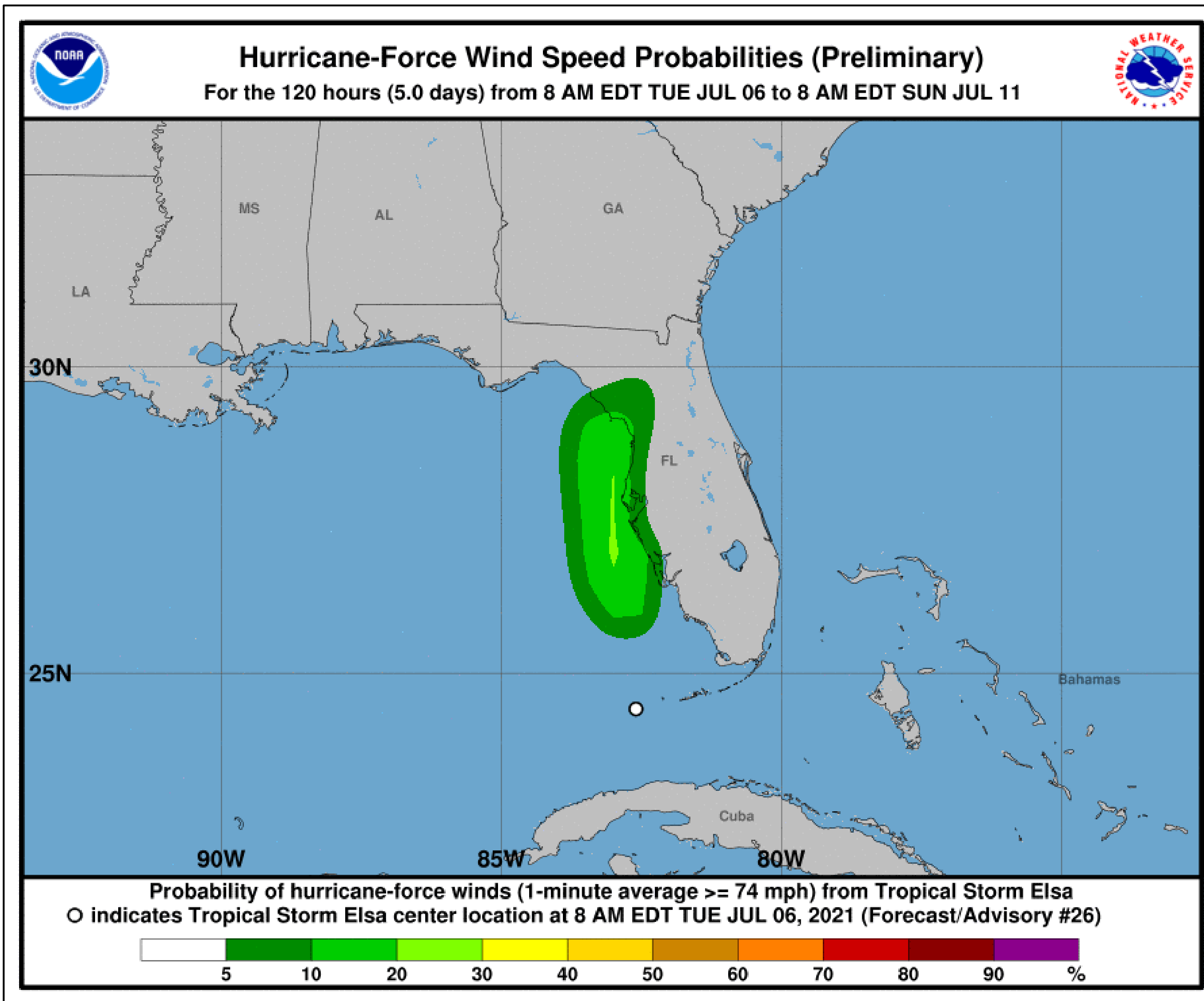
- Probabilities of sustained tropical storm force winds (34 kt to 63 kt) over the next 5 days, based off this cyclone's wind radii and track.
- Clear or dark green are the lowest chances of 0-30%.
- Yellow to orange is 31-70%
- Red through purple are the highest probabilities of 71%-100%
- See the color bar below the image for more details.

Hurricane Wind Speed Probabilities



Tropical Analysis and Forecast Branch
NWS National Hurricane Center

Tropical Storm Elsa

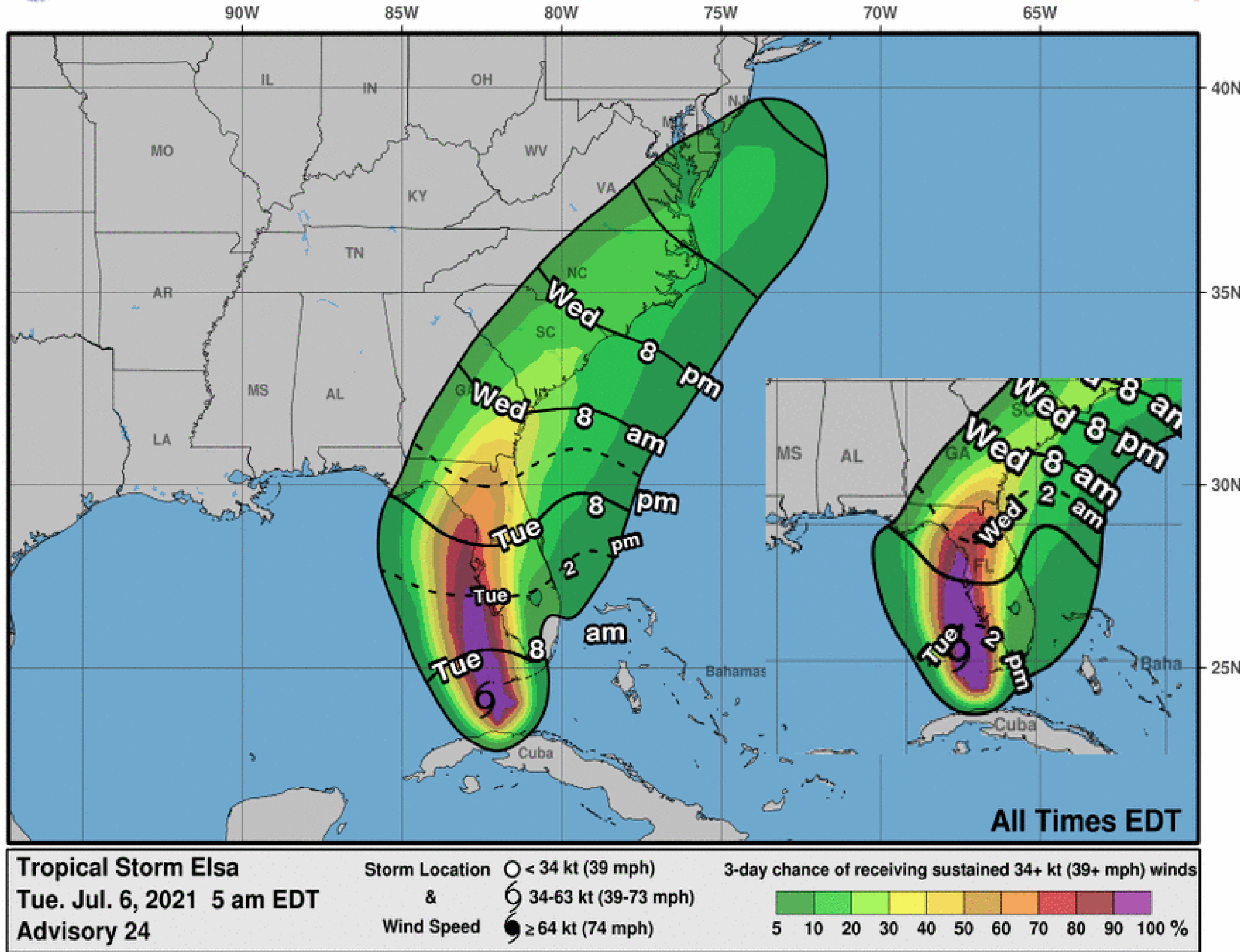


- **DELETE THESE BULLETS AND CREATE YOUR OWN**
- Probabilities of sustained hurricane force winds (64 kt +) over the next 5 days, based off this cyclone's wind radii and track.
- Clear or dark green are the lowest chances of 0-30%.
- Yellow to orange is 31-70%
- Red through purple are the highest probabilities of 71%-100%
- See the color bar below the image for more details.



Tropical Storm Elsa

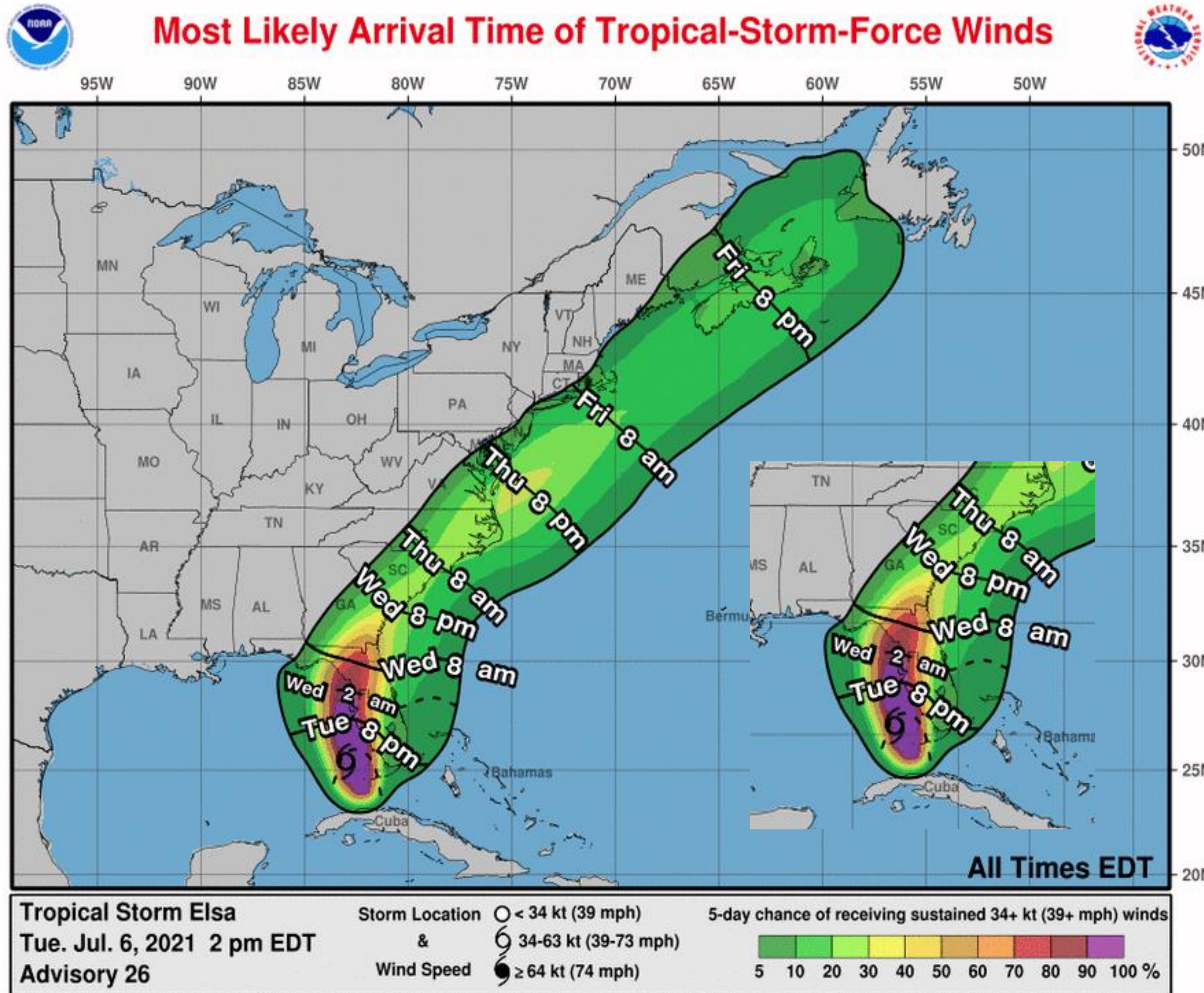
0-3 Day Earliest Reasonable Arrival Time of Tropical-Storm-Force Winds



- The earliest reasonable time of arrival of Tropical Storm Force Winds (34 kt to 63 kt) for this cyclone based off the current track and wind radii.
- TS winds continue to impact the Key West area early this afternoon
- Earliest reasonable time of arrival for TS winds across Tampa Bay/St Pete area is very shortly this afternoon
- See the color bar below the image for more details.



Tropical Storm Elsa



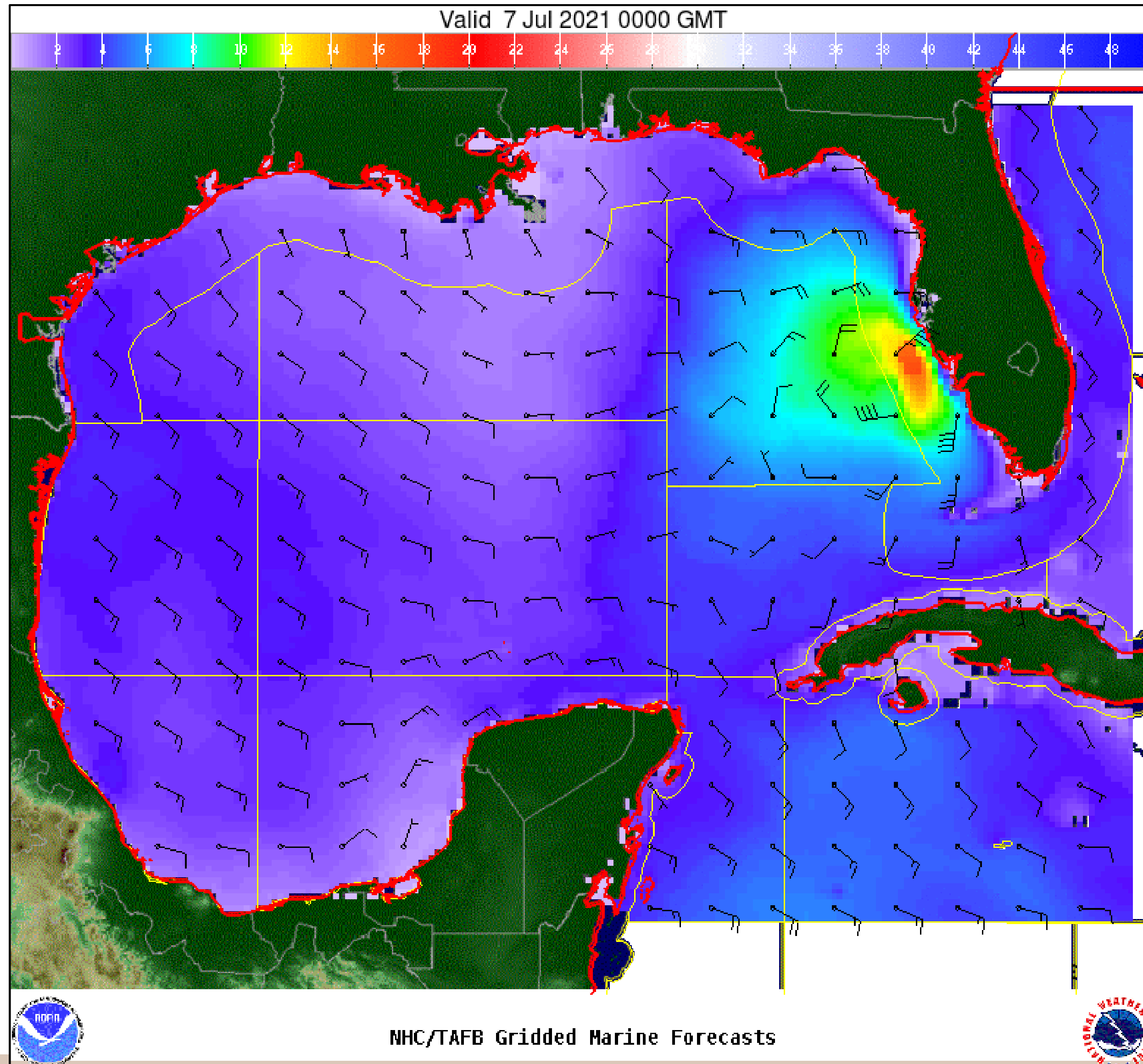
- The earliest reasonable time of arrival of Tropical Storm Force Winds (34 kt to 63 kt) for this cyclone based off the current track and wind radii.
- TS winds continue to impact the Key West area this afternoon
- Most likely time of arrival for TS winds across Tampa Bay/St Pete area is late this evening
- See the color bar below the image for more details.

Wind And Waves

Tropical Storm Elsa



Tropical Analysis and Forecast Branch
NWS National Hurricane Center



12 Hour Forecast

7 Jul 0000 UTC or 8 pm

Peak Winds: 65 kt - Hurricane

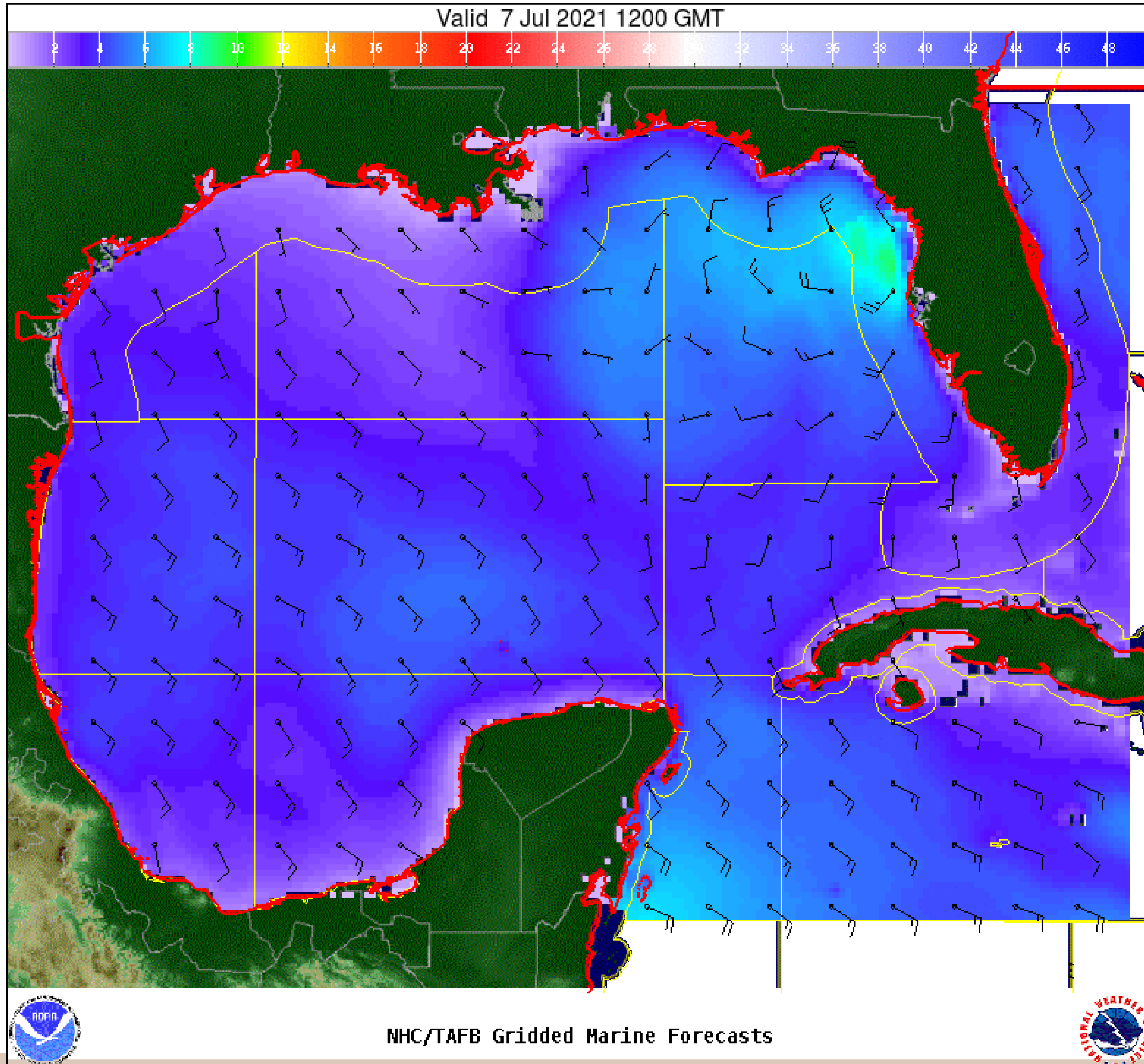
Peak Seas: 20 ft

Wind And Waves

Tropical Storm Elsa

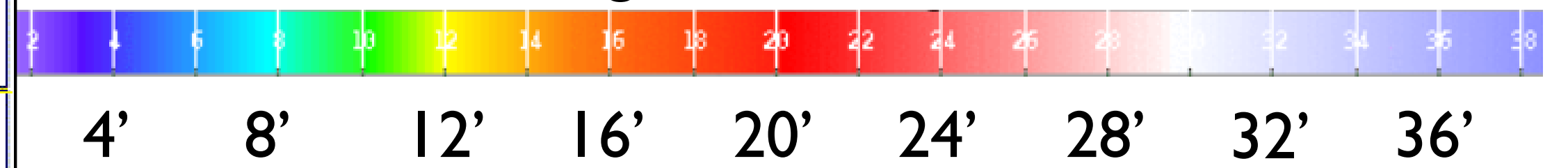


Tropical Analysis and Forecast Branch
NWS National Hurricane Center



24 Hour Forecast
7 Jul 1200 UTC or 8 am
Making landfall
Peak Winds: 65 kt - Hurricane
Peak Seas: 12 ft

■ Wave heights are in feet

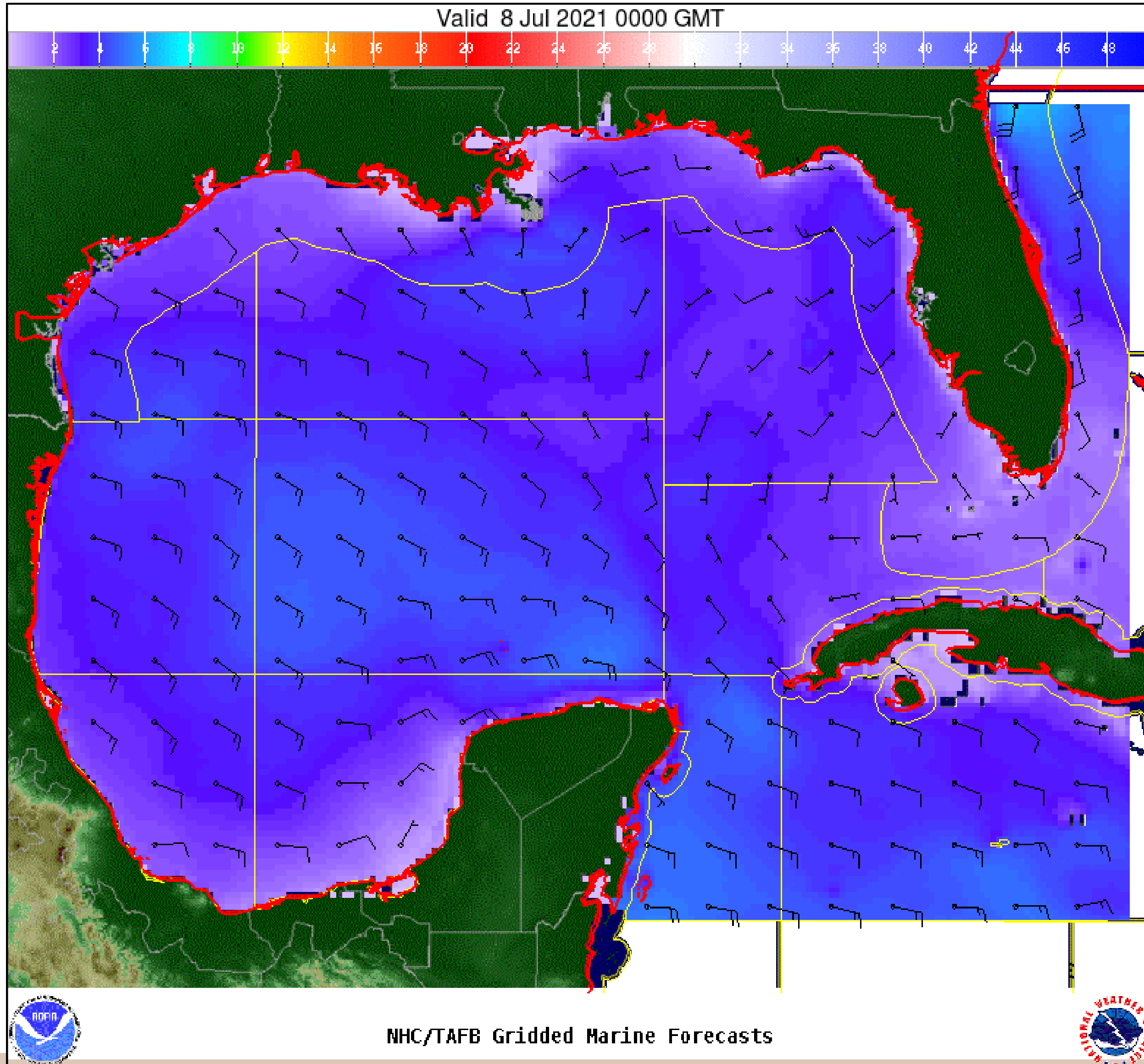


Wind And Waves

Tropical Storm Elsa



Tropical Analysis and Forecast Branch
NWS National Hurricane Center



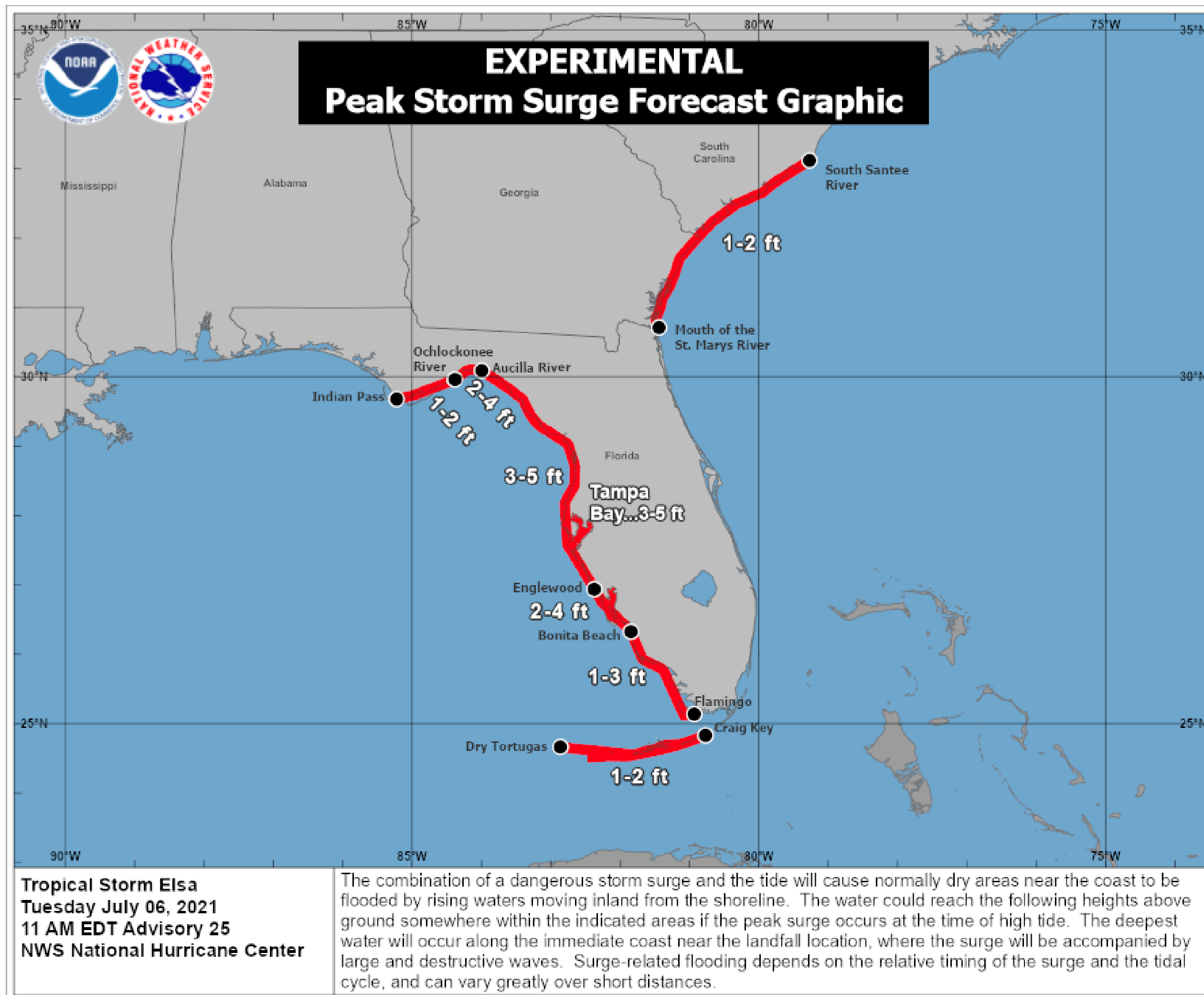
36 Hour Forecast
8 Jul 0000 UTC or 8 pm
Inland across SE Georgia
Peak Winds: 35 kt
Peak Seas: 5 ft Florida Big Bend

Potential Peak Storm Surge / Watches and Warnings



Tropical Analysis and Forecast Branch
NWS National Hurricane Center

Tropical Storm Elsa



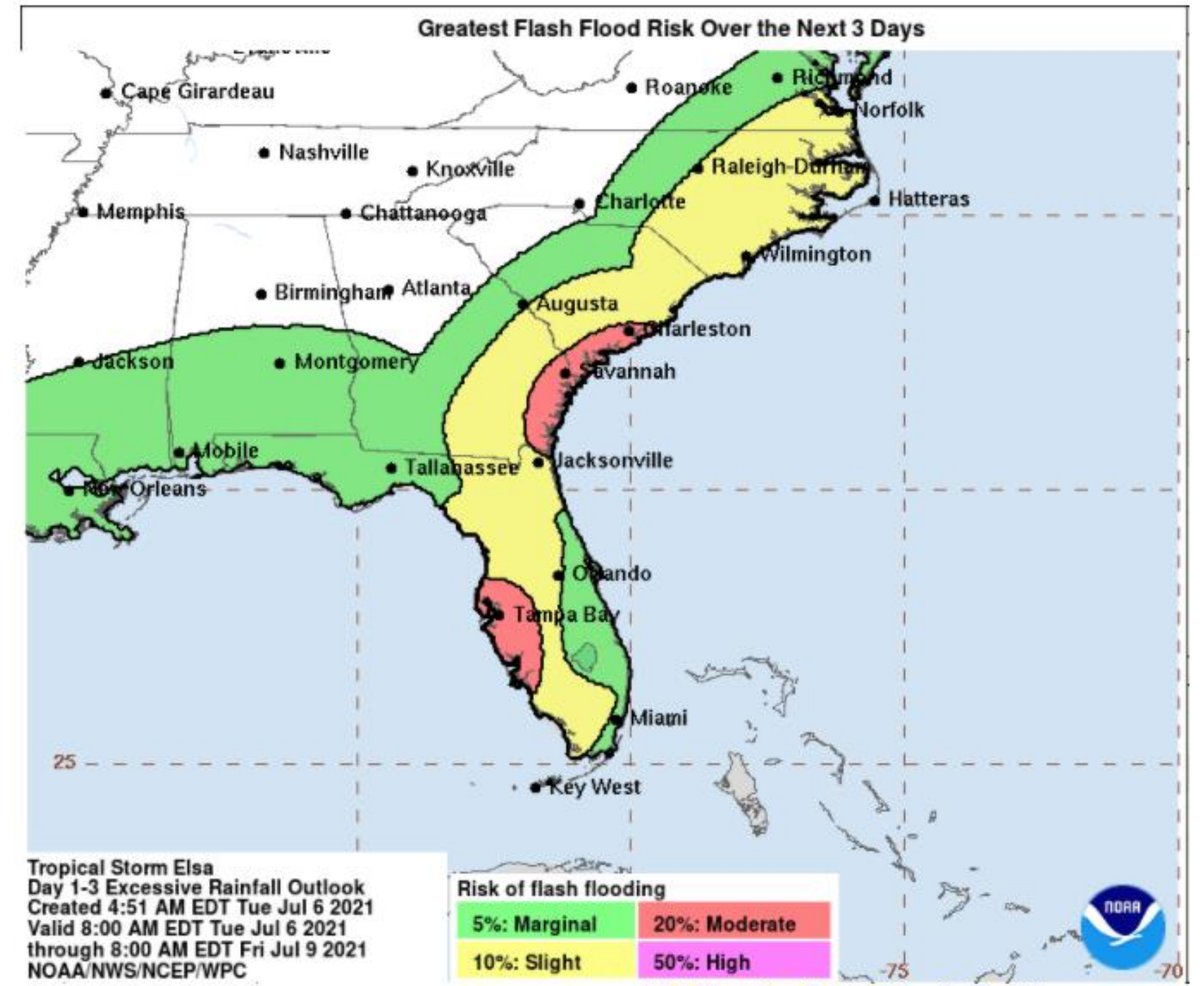
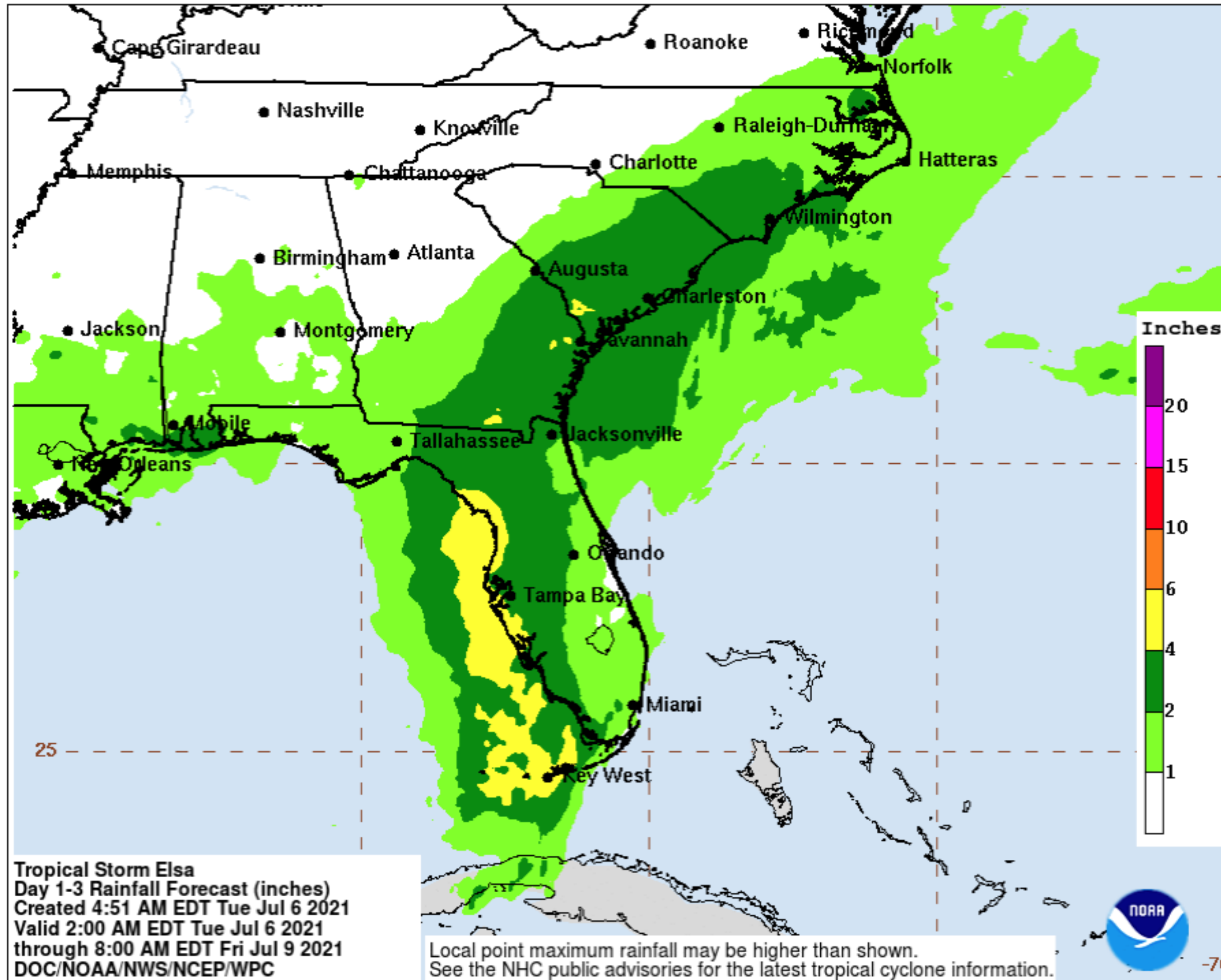
- Potential storm surge is represented in feet above the ground at any given point.

Expected Storm Total Rainfall and Chance of Rainfall Flooding



Tropical Analysis and Forecast Branch
NWS National Hurricane Center

Tropical Storm Elsa



Total rainfall in inches through 9 Jul 1200 UTC or 8 am.

Refer to map legend for Valid Time

Tornado Outlook – Day 1

Tropical Storm Elsa



Tropical Analysis and Forecast Branch
NWS National Hurricane Center



Tornado Watch # 337 - Valid from 145 PM until 1100 PM EDT

NOAA/NWS/Storm Prediction Center

Updated: 20210706/1902 UTC

Hazard	Tornadoes	EF2+ Tornadoes	Severe Wind	65 kt+ Wind	Severe Hail	2"+ Hail
Likelihood	Moderate	Low	Very Low	Very Low	Very Low	Very Low

Tornado Watch is currently in effect for south and central portions of Florida, and adjacent Gulf waters.


Tornado threat to continue as Elsa moves across N Florida

Key Messages


Tropical Storm Elsa



Tropical Analysis and Forecast Branch
NWS National Hurricane Center



Key Messages for Tropical Storm Elsa



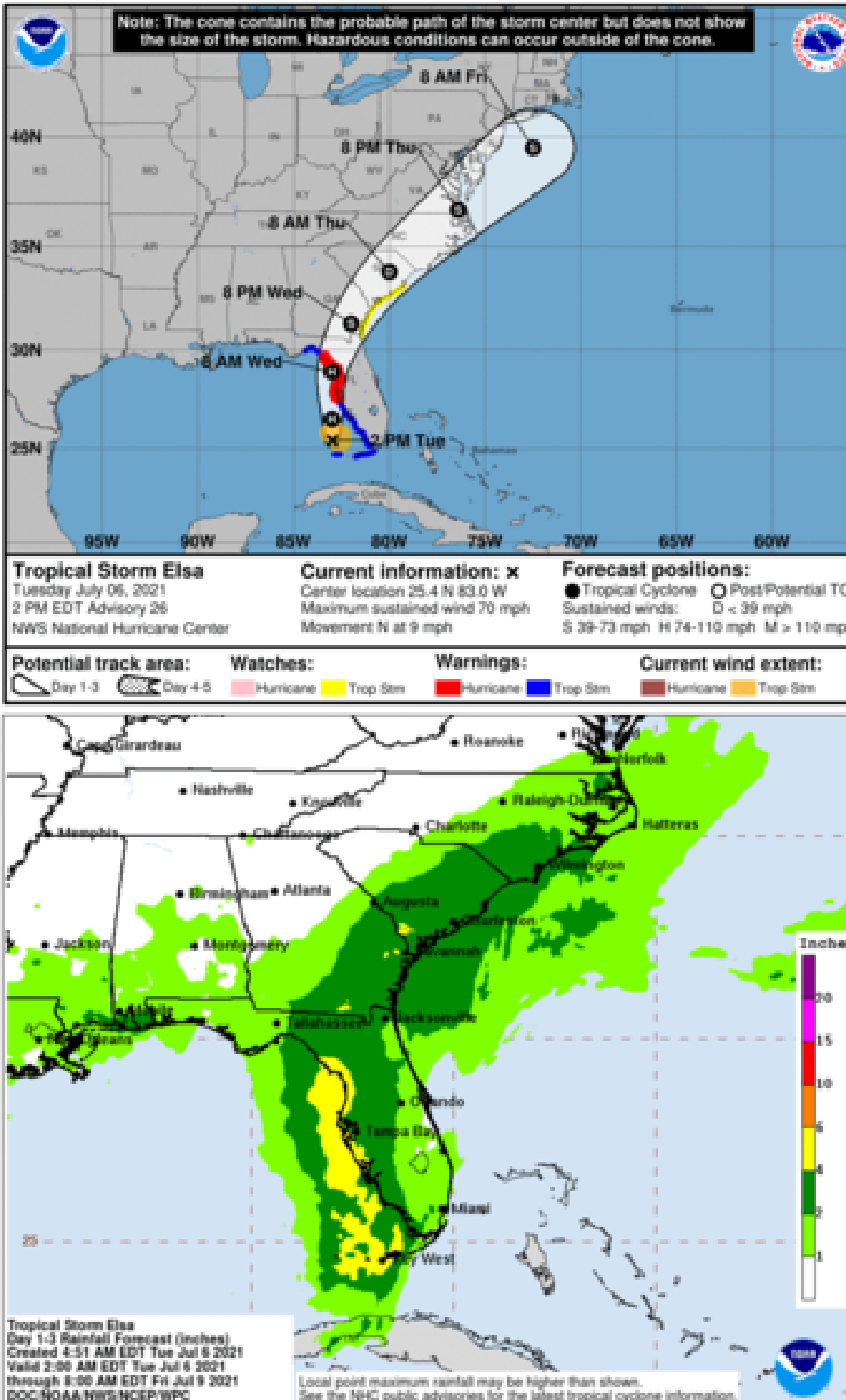
Advisory 26: 2:00 PM EDT Tue Jul 06, 2021

1. Heavy rain will impact Cuba today resulting in significant flooding and mudslides. As Elsa moves near or along the western Florida Peninsula through Wednesday, heavy rainfall may result in isolated flash, urban, and minor river flooding, with considerable flash and urban flooding possible in southwest and western portions of Florida. Mid to late week, heavy rainfall across coastal Georgia, South Carolina, North Carolina, and southeastern Virginia may result in isolated flash and urban flooding, with considerable flash and urban flooding possible across coastal Georgia and the Lowcountry of South Carolina.

2. There is a danger of life-threatening storm surge along portions of the west coast of Florida tonight and Wednesday, and a Storm Surge Warning is in effect for that area.

3. Hurricane conditions are expected tonight and early Wednesday along a portion of the west coast of Florida, where a Hurricane Warning is in effect. Tropical storm conditions are occurring across portions of the Florida Keys and are expected to spread northward along much of the west coast of the state through Wednesday morning, where a Tropical Storm Warning is in effect.

4. A Tropical Storm Watch is in effect for the Georgia coast and portions of the South Carolina coast, where tropical storm conditions are possible late Wednesday and early Thursday.



Tropical Storm Elsa
Tuesday July 06, 2021
2 PM EDT Advisory 26
NWS National Hurricane Center

Current information: x
Center location 25.4 N 83.0 W
Maximum sustained wind 70 mph
Movement N at 9 mph

Forecast positions:
● Tropical Cyclone ○ Post-Potential TC
Sustained winds: D < 39 mph
S 39-73 mph H 74-110 mph M > 110 mph

Potential track area: Day 1-3 Day 4-5
● Hurricane ● Trop Stm ● Hurricane ● Trop Stm

Watches: Hurricane Trop Stm
Warnings: Hurricane Trop Stm
Current wind extent: Hurricane Trop Stm

Tropical Storm Elsa
Day 1-3 Rainfall Forecast (inches)
Created 4:51 AM EDT Tue Jul 6 2021
Valid 2:00 AM EDT Tue Jul 6 2021
through 8:00 AM EDT Fri Jul 9 2021
DOC: NOAA/NWS/NCEP/WPC

Local point maximum rainfall may be higher than shown.
See the NHC public advisories for the latest tropical cyclone information.

For more information go to hurricanes.gov

- Tropical Storm conditions currently impacting the SE Gulf waters this afternoon will shift northward through tonight and begin to impact coastal areas of south central Florida from Ft Meyers northward this evening.
- Elsa expected to strengthen to a minimal hurricane this evening and maintain that strength as it moves across the Tampa Bay area early tonight.
- Winds of 50-65 kt and seas building 15-24 ft are expected to accompany the E semicircle of Elsa as it moves N along the W coast of Florida tonight.



TROPICAL STORM ELSA BRIEFING

You can contact the Tropical Analysis and Forecast Branch at
305-229-4424

*The Next Briefing Will Be:
Wednesday 8:00 AM EDT*

You can always find get the latest graphics and information for this storm at www.hurricanes.gov



NHC_TAFB

www.nhc.noaa.gov