

IMPACTS FOR D7 (through next 5 days)

Winds – Low to Medium

Storm Surge – Low to Medium

Rainfall/Flash Flooding – Medium to High

Tornadoes – Low

Waves – Low to Medium

INVEST 91L BRIEFING

3:00 PM EDT

Wednesday, June 1, 2022

Prepared by:

Dylan Flynn

*Tropical Analysis and Forecast Branch
NWS National Hurricane Center*

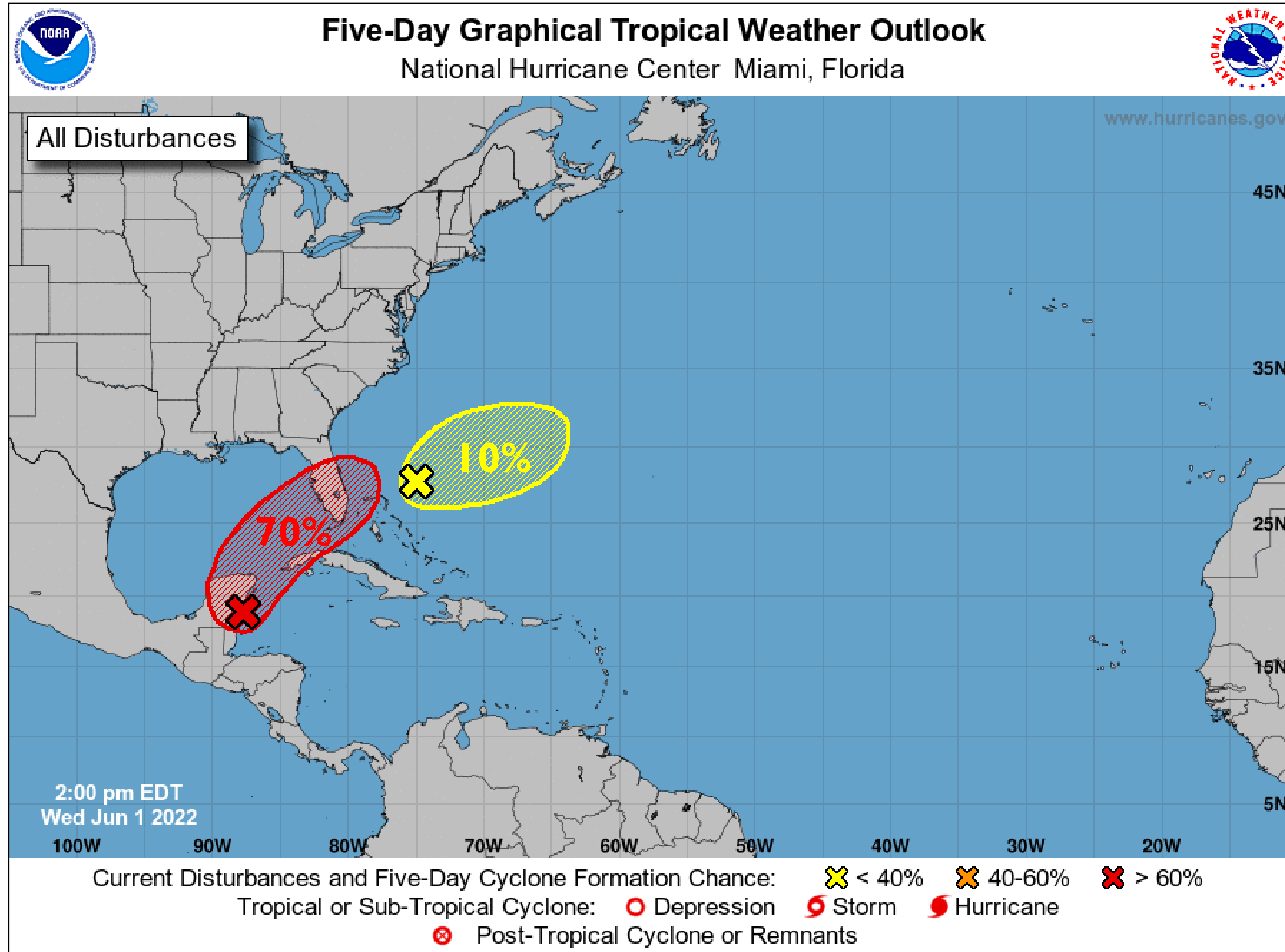


Tropical Weather Outlook

Invest 91L

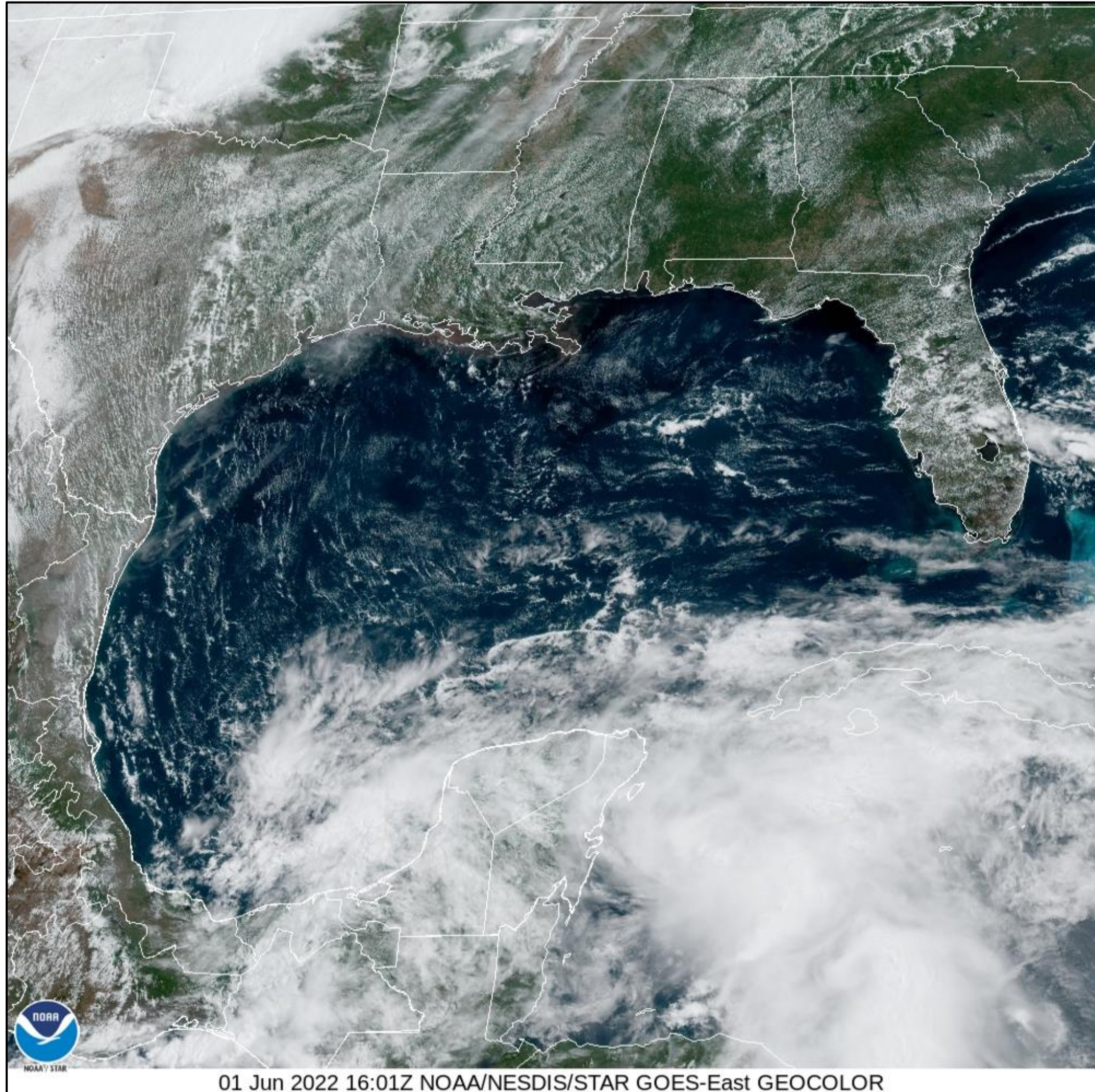


Tropical Analysis and Forecast Branch
NWS National Hurricane Center



Near the Yucatan Peninsula and the NW Caribbean

- A large area of disorganized showers and thunderstorms is associated with a broad area of low pressure.
- Environmental conditions appear conducive for gradual development, and this system is likely to become a tropical depression while it moves northeastward over the northwestern Caribbean Sea and southeastern Gulf of Mexico during the next couple of days.
- Regardless of development, locally heavy rainfall is likely across portions of southeastern Mexico, the Yucatan Peninsula, and Belize during the next day or so, spreading across western Cuba, South Florida, and the Florida Keys on Friday and Saturday
- Formation chance through 48 hours...70 percent.
- Formation chance through 5 days...80 percent.



Invest Area 91L

Location: 19.0N 87.5W

About 650 nm SW of Miami, FL

About 520 nm SW of Key West, FL

Maximum Sustained Winds: 25 kt

Present Movement: NE at 5 kt

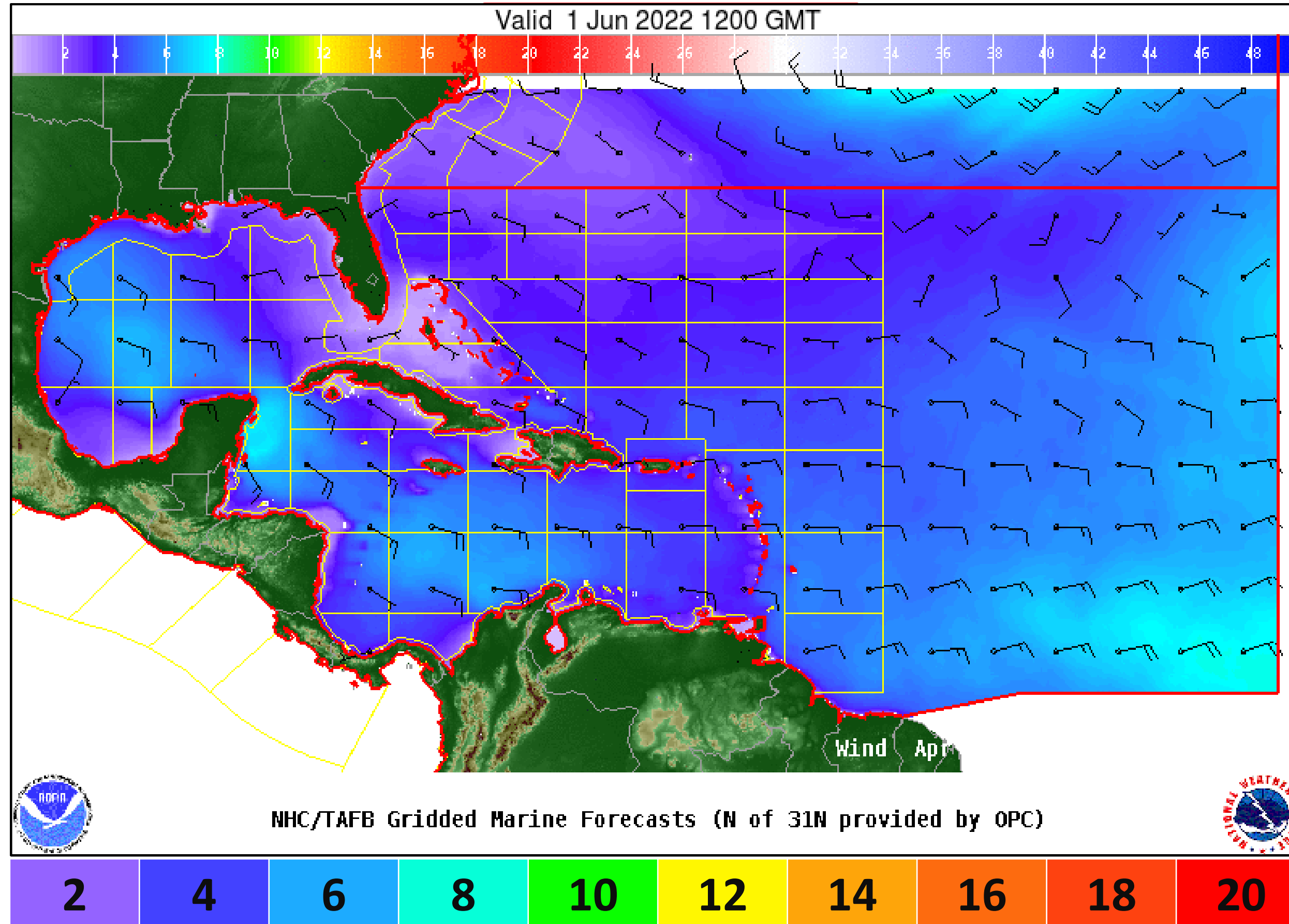
Minimum Central Pressure: 1007 mb

Wind And Waves

Invest 91L



Tropical Analysis and Forecast Branch
NWS National Hurricane Center



Wave heights are in feet

Current Conditions

0800 EDT Wednesday, June 1st

Peak Winds: 25 kt

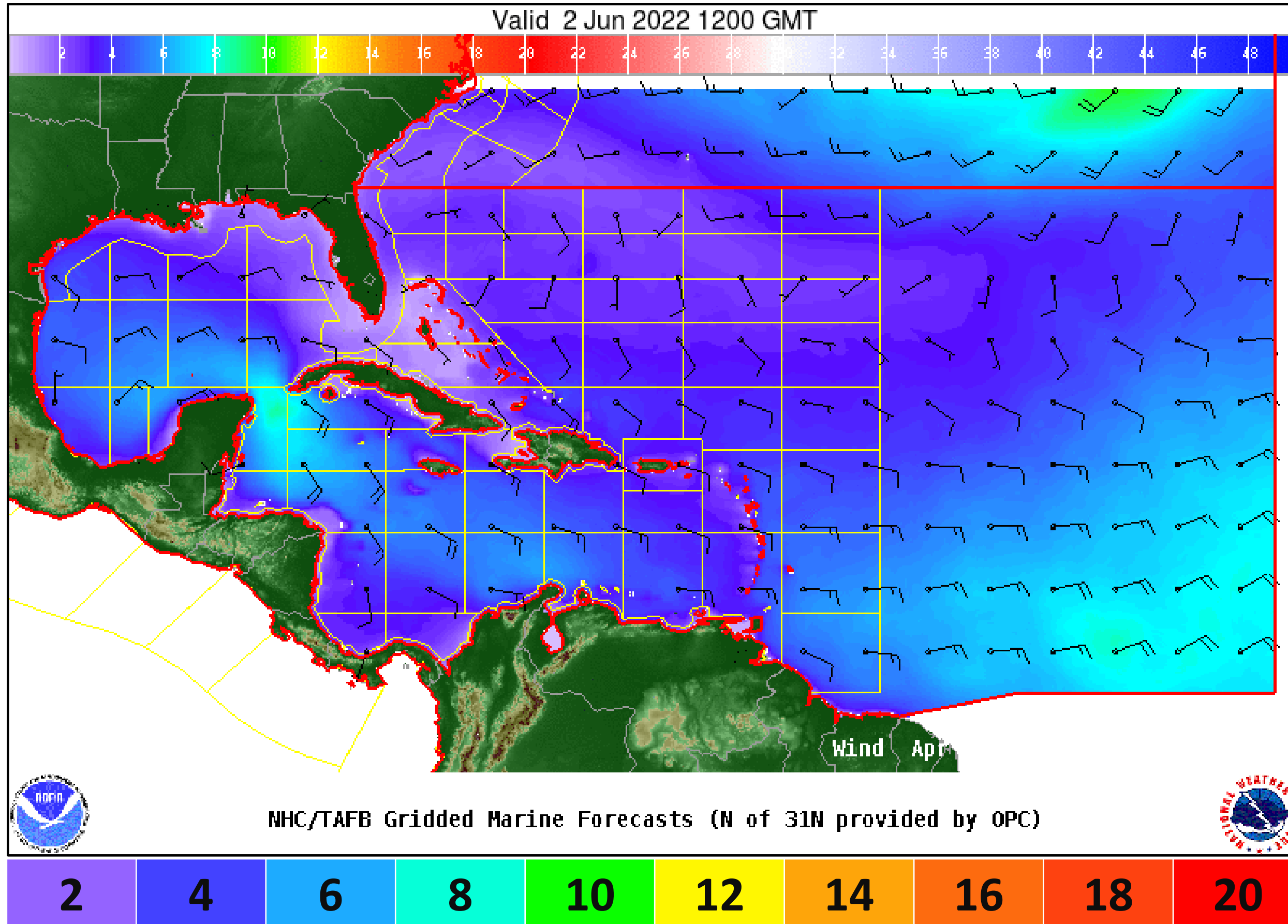
Peak Seas: 8 ft

Wind And Waves

Invest 91L



Tropical Analysis and Forecast Branch
NWS National Hurricane Center



Wave heights are in feet

24 Hour Forecast

0800 EDT Thursday, June 2nd

Peak Winds: 25 kt

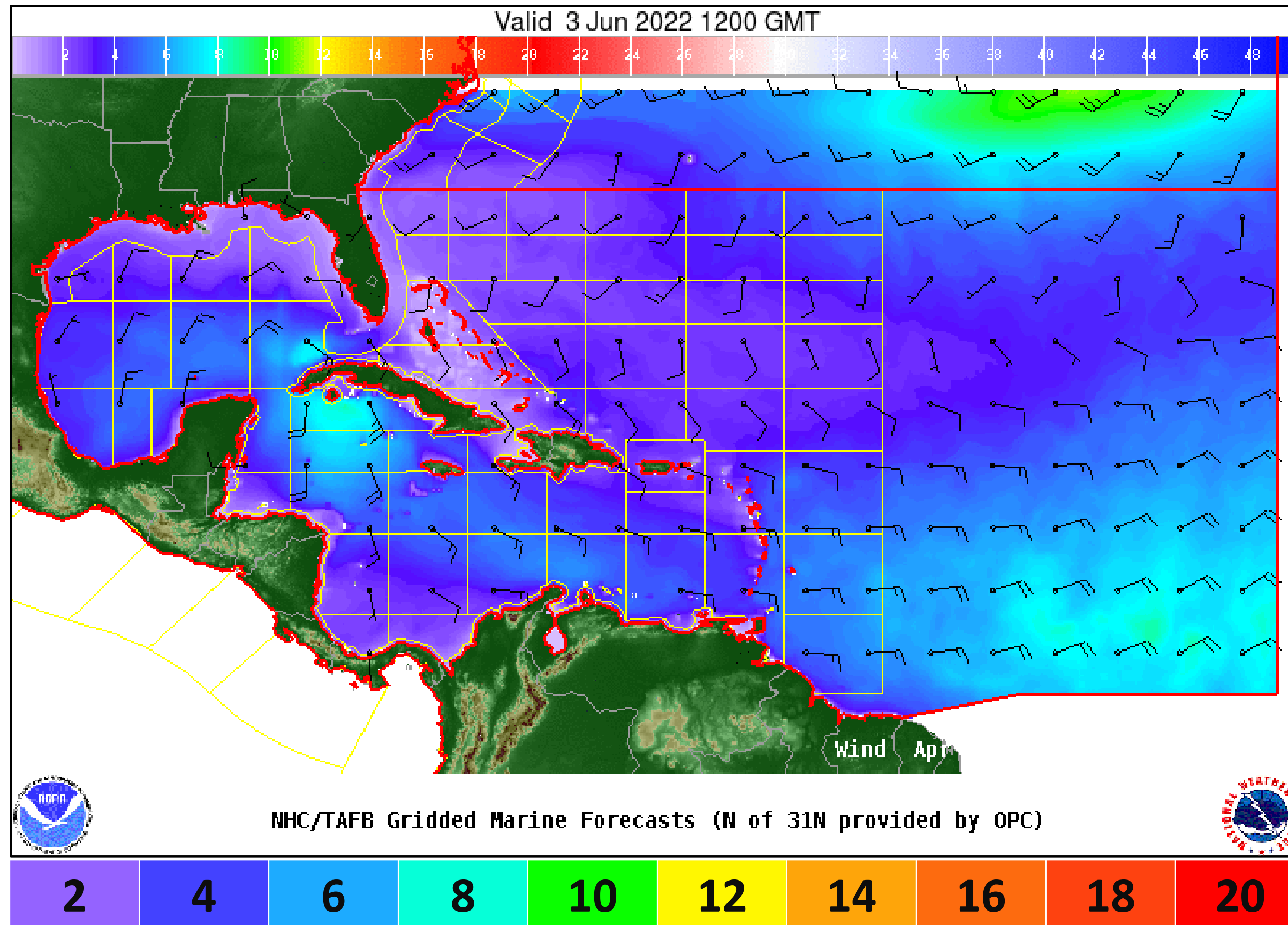
Peak Seas: 10 ft

Wind And Waves

Invest 91L



Tropical Analysis and Forecast Branch
NWS National Hurricane Center



Wave heights are in feet

48 Hour Forecast

0800 EDT Friday, June 3rd

Peak Winds: 25 kt

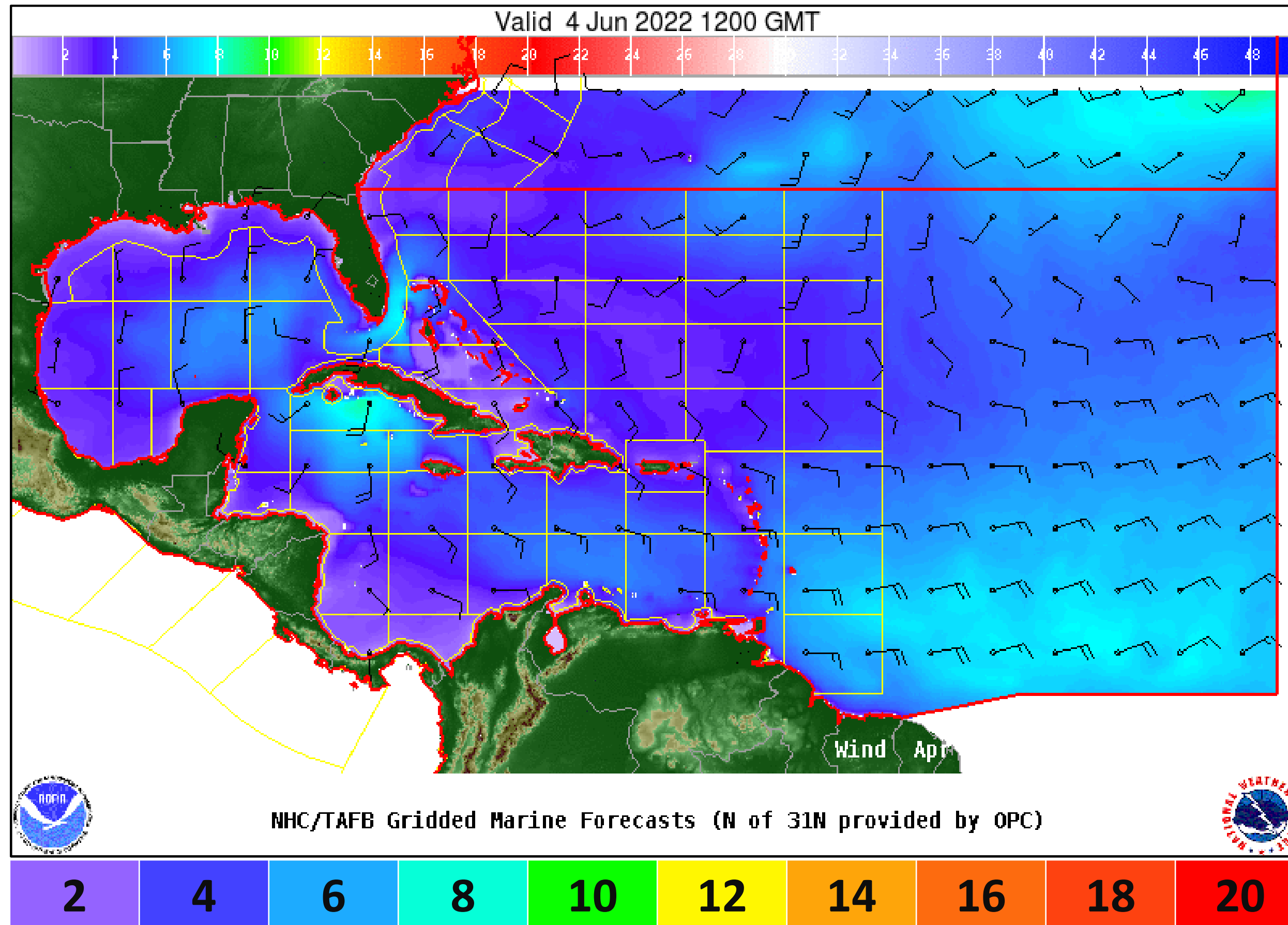
Peak Seas: 10 ft

Wind And Waves

Invest 91L



Tropical Analysis and Forecast Branch
NWS National Hurricane Center



Wave heights are in feet

72 Hour Forecast

0800 EDT Saturday, June 4th

Peak Winds: 30 kt

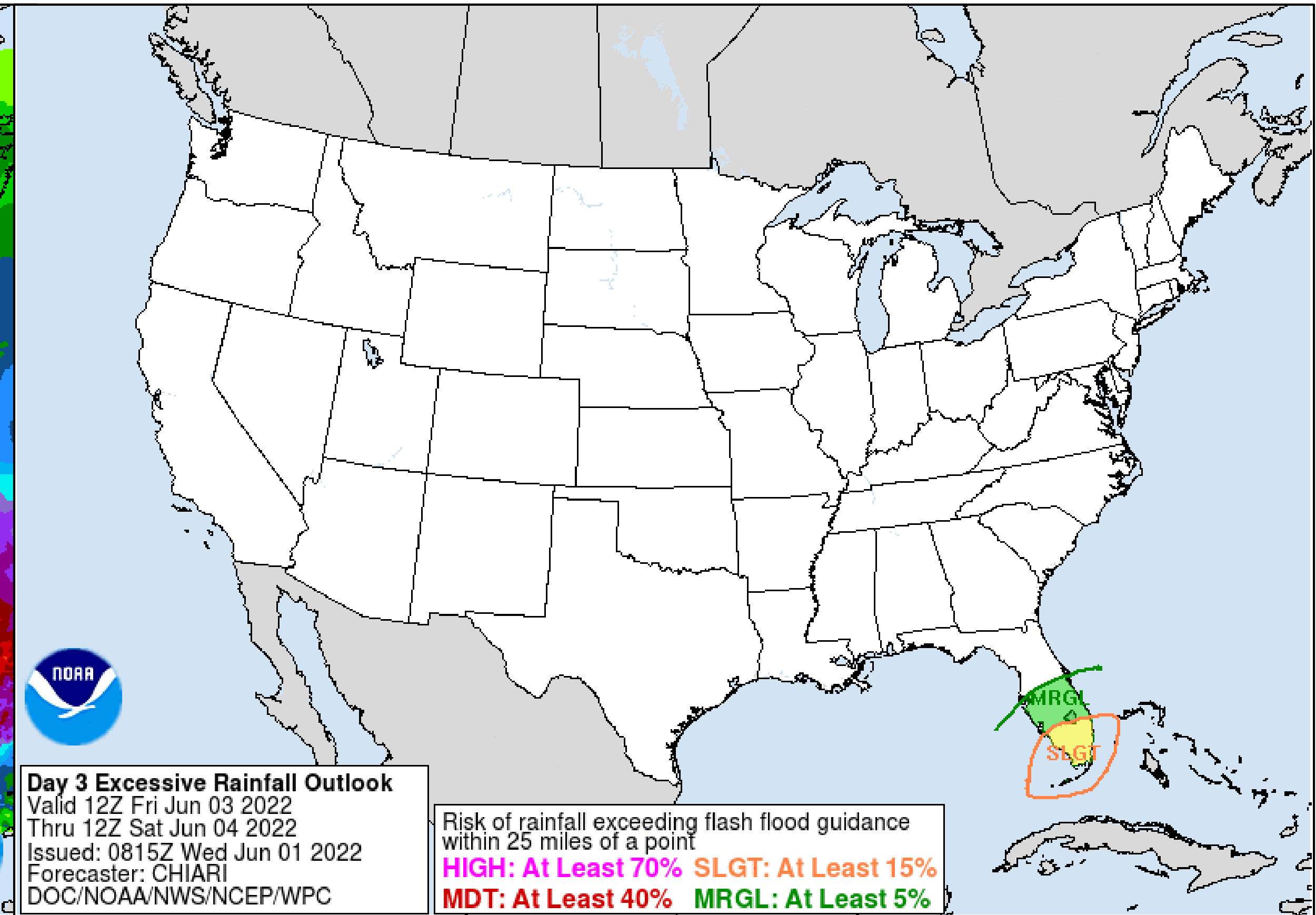
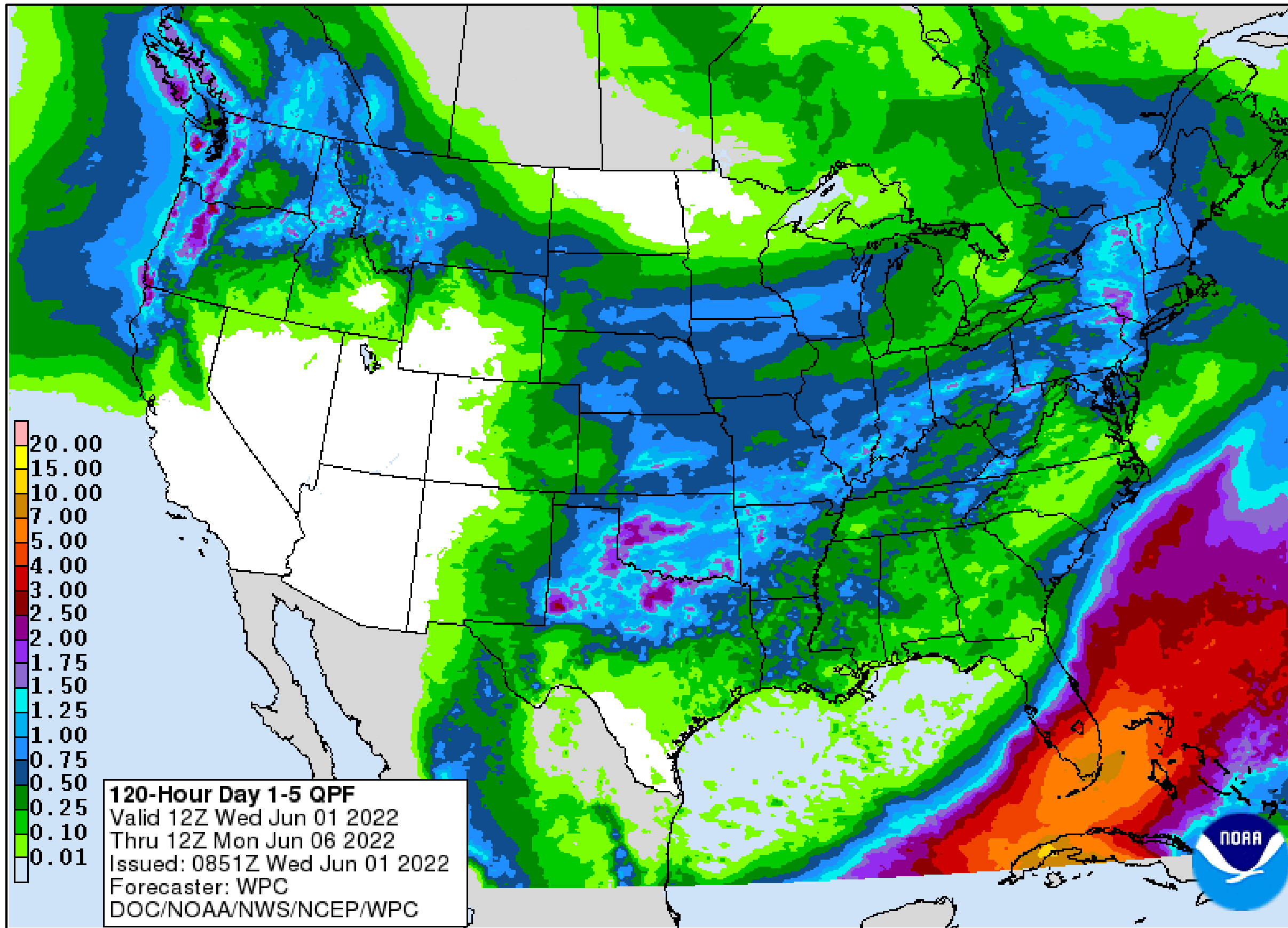
Peak Seas: 10 ft

Expected Storm Total Rainfall and Chance of Rainfall Flooding



Tropical Analysis and Forecast Branch
NWS National Hurricane Center

Invest 91L Images from NWS Weather Prediction Center



Total rainfall in inches during the time span stated on the map

Refer to map legend for Valid Time



- 91L was designated as an Invest Area this morning
- Tropical cyclone development potential remains high
- Most likely scenario is a weak tropical storm
- Biggest threat remains rainfall for South Florida



INVEST 91L BRIEFING

You can contact the Tropical Analysis and Forecast Branch at
305-229-4424

*The Next Briefing Will Be:
Thursday 8:00 AM EDT*

You can always find get the latest graphics and information for this storm at www.hurricanes.gov



NHC_TAFB

www.nhc.noaa.gov