

IMPACTS FOR D7 (through next 5 days)

Winds – Medium

Storm Surge – Low

Rainfall/Flash Flooding – High

Tornadoes – Low

Waves - Medium

POTENTIAL TROPICAL CYCLONE ONE BRIEFING



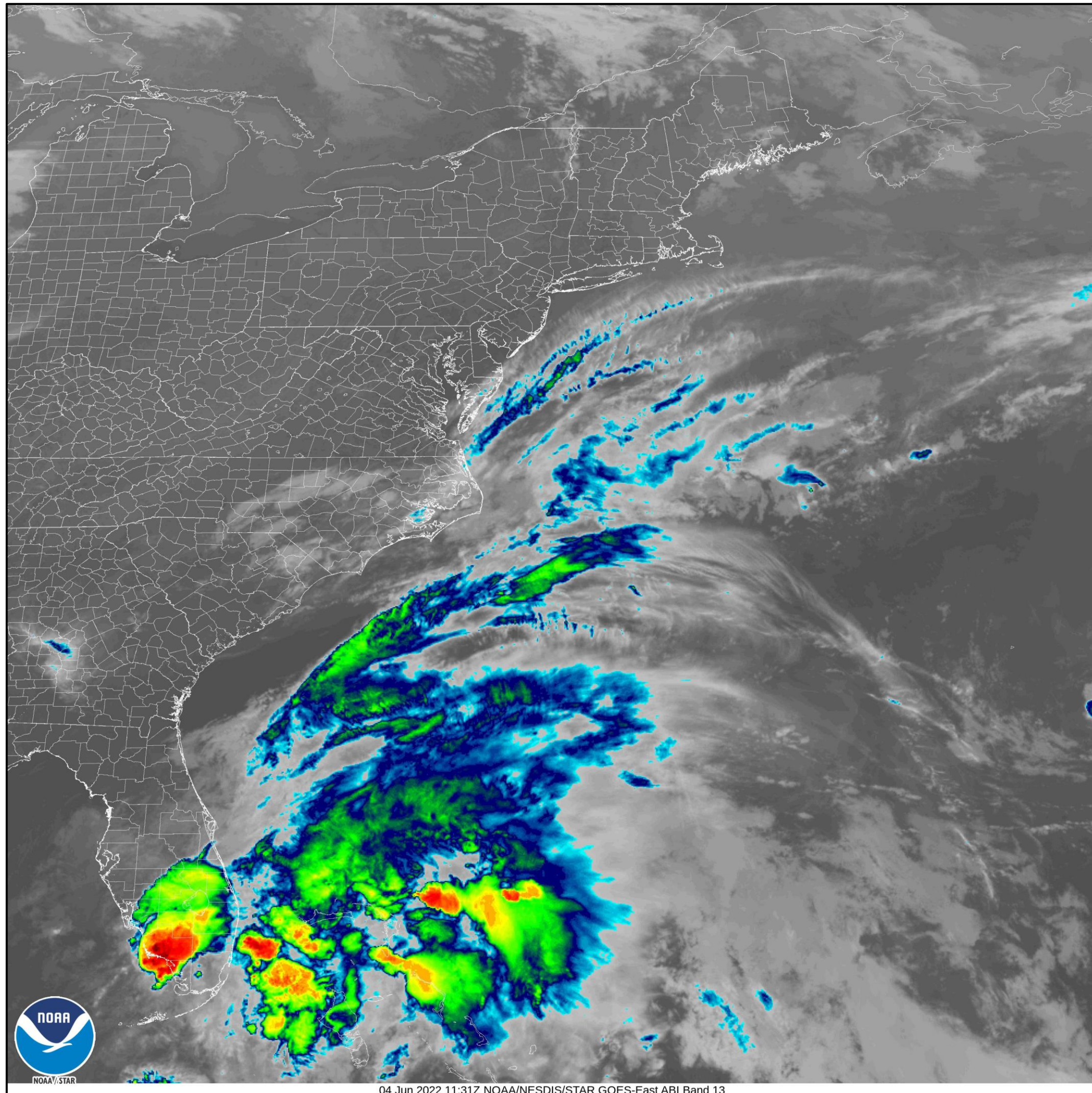
9:00 AM EDT
Saturday, June 4, 2022

Prepared by:

Stephen Konarik

*Tropical Analysis and Forecast Branch
NWS National Hurricane Center*





HEAVY RAIN AND FLOODING OVER SOUTH FLORIDA

SUMMARY AS OF 8 AM EDT

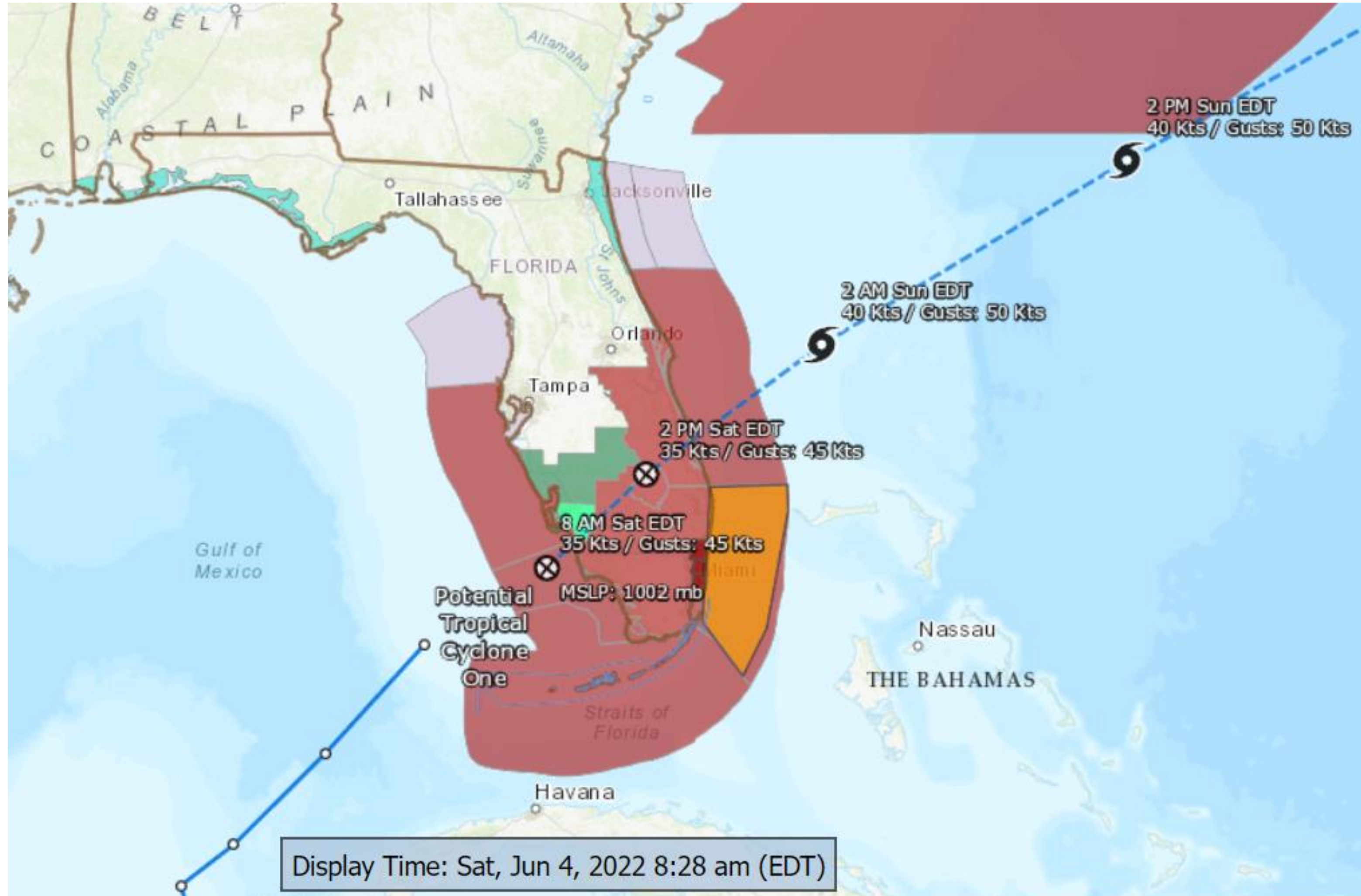
- LOCATION...26.0N 82.2W
- ABOUT 70 KM SSW OF FT. MYERS FLORIDA
- MAXIMUM SUSTAINED WINDS 35 KT
- PRESENT MOVEMENT...NE at 16 KT
- PEAK SEAS: 12 FT

Hazards Map

Potential Tropical Cyclone One



Tropical Analysis and Forecast Branch
NWS National Hurricane Center



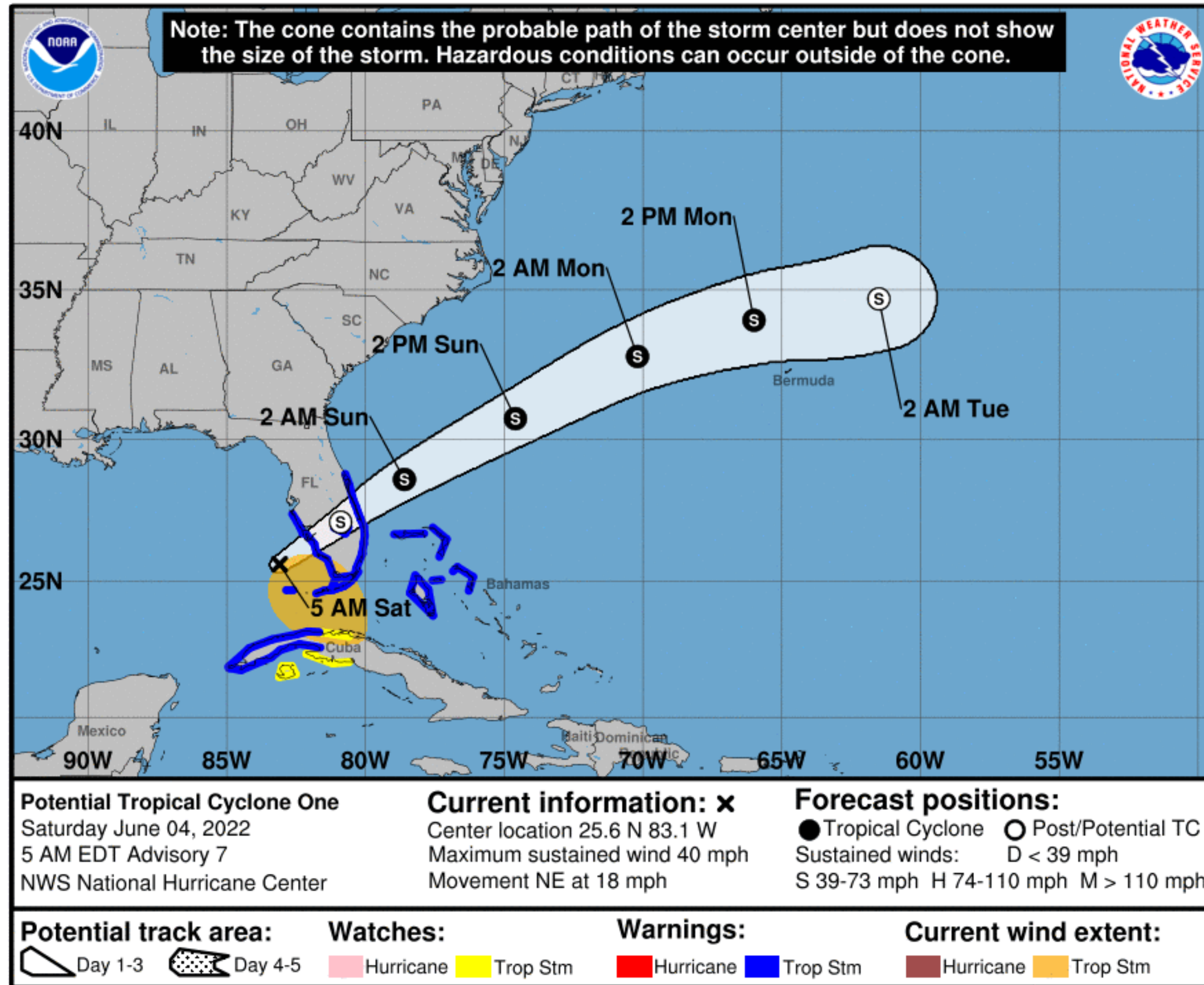
- Hurricane Warning
- Tropical Storm Warning
- Hurricane Watch
- Tropical Storm Watch
- Coastal Flood Advisory
- Small Craft Advisory
- Gale Warning
- Gale Watch

Forecast Information

Potential Tropical Cyclone One



Tropical Analysis and Forecast Branch
NWS National Hurricane Center



- **EXPECTED TO BECOME TROPICAL STORM LATER TODAY OVER ATLANTIC WATERS**
- **VERY HEAVY RAIN AND FLOODING THREAT THROUGH THIS AFTERNOON SOUTH FLORIDA**
- **GALE FORCE WINDS INCREASING OVER ATLANTIC WATERS**

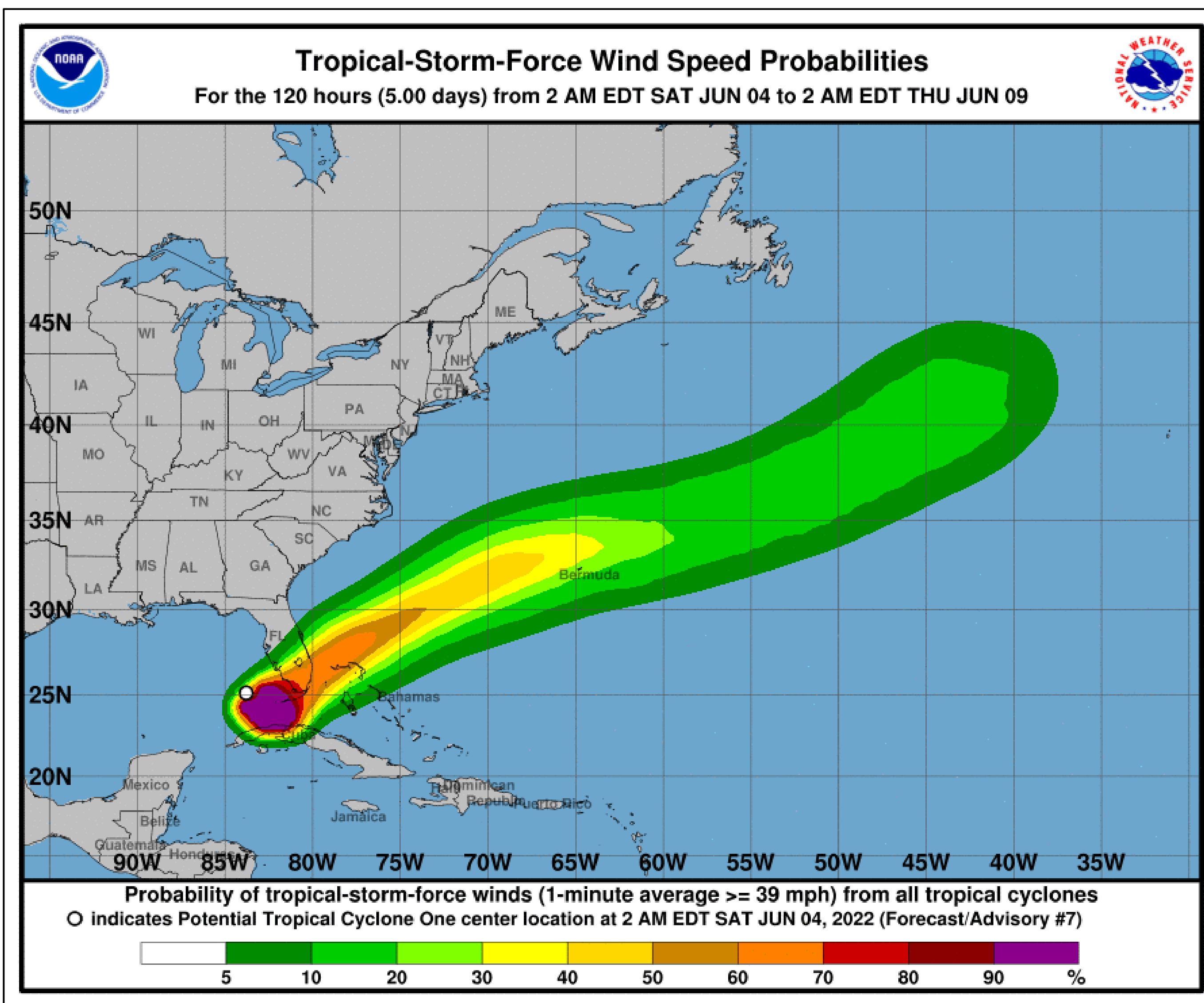
NOTE: Do not focus on the exact track. Impacts can occur well outside the area enclosed by the cone.

T.S. Wind Speed Probabilities

Potential Tropical Cyclone One



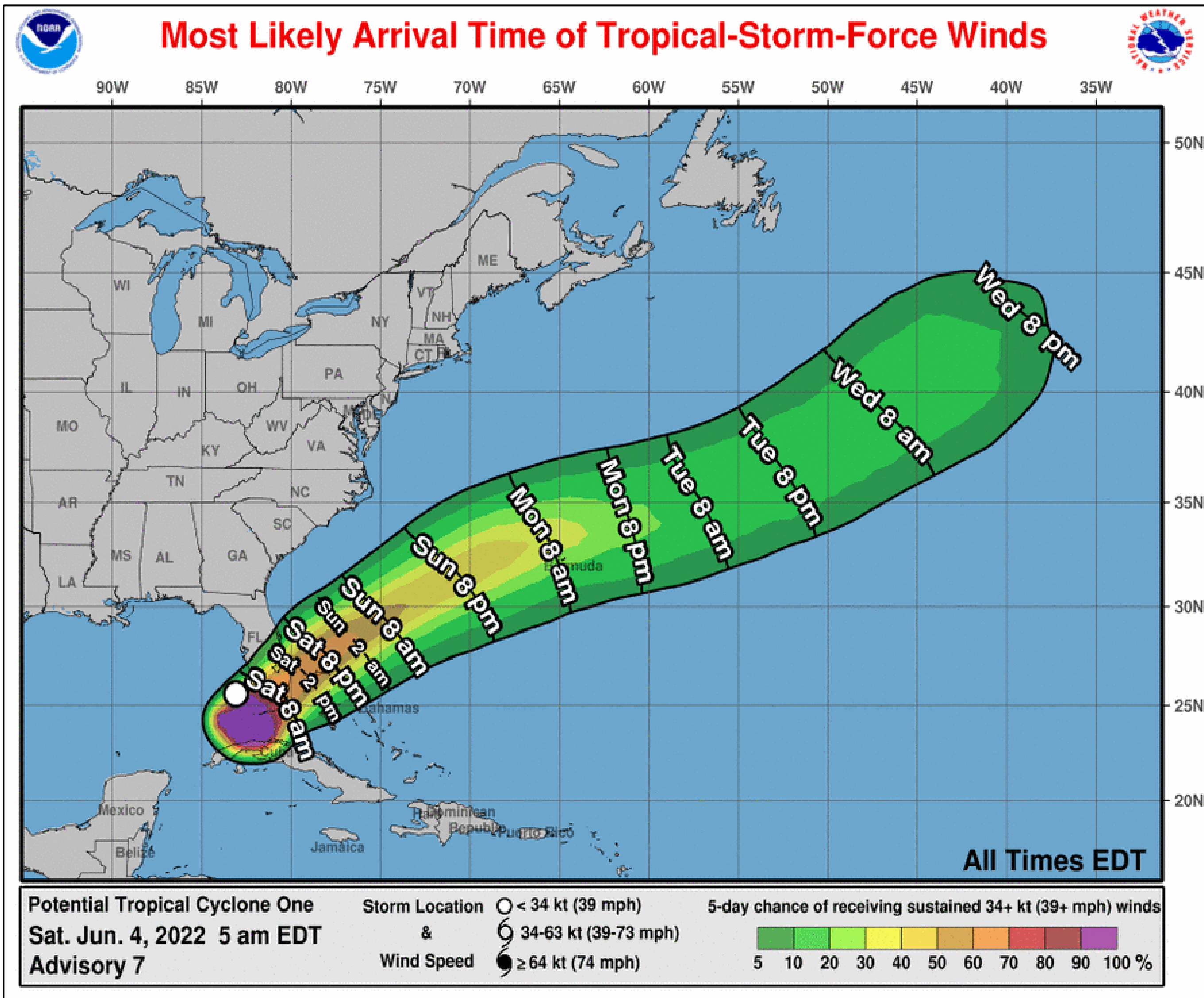
Tropical Analysis and Forecast Branch
NWS National Hurricane Center



- Fort Myers 20%
- Naples 60%
- Key West 90%
- Marathon 90%
- Miami 70%
- Fort Lauderdale 70%
- West Palm Beach 70%
- Fort Pierce 40%



Potential Tropical Cyclone One



■ TIME OF ARRIVAL

- Southwest Florida: **ONGOING**
- Florida Keys: **ONGOING**
- Florida Atlantic coast: **Before noon**

■ TIME OF DEPARTURE

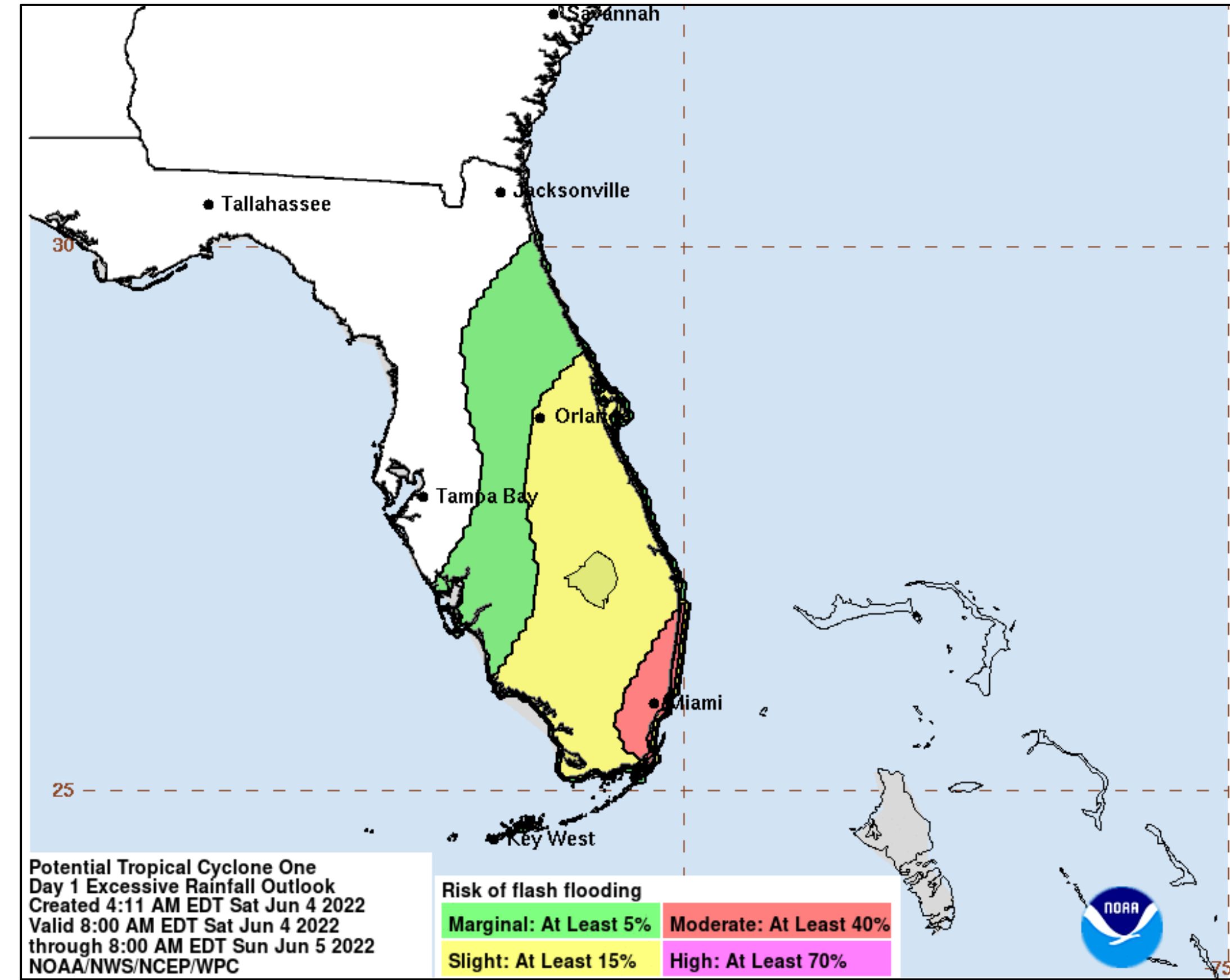
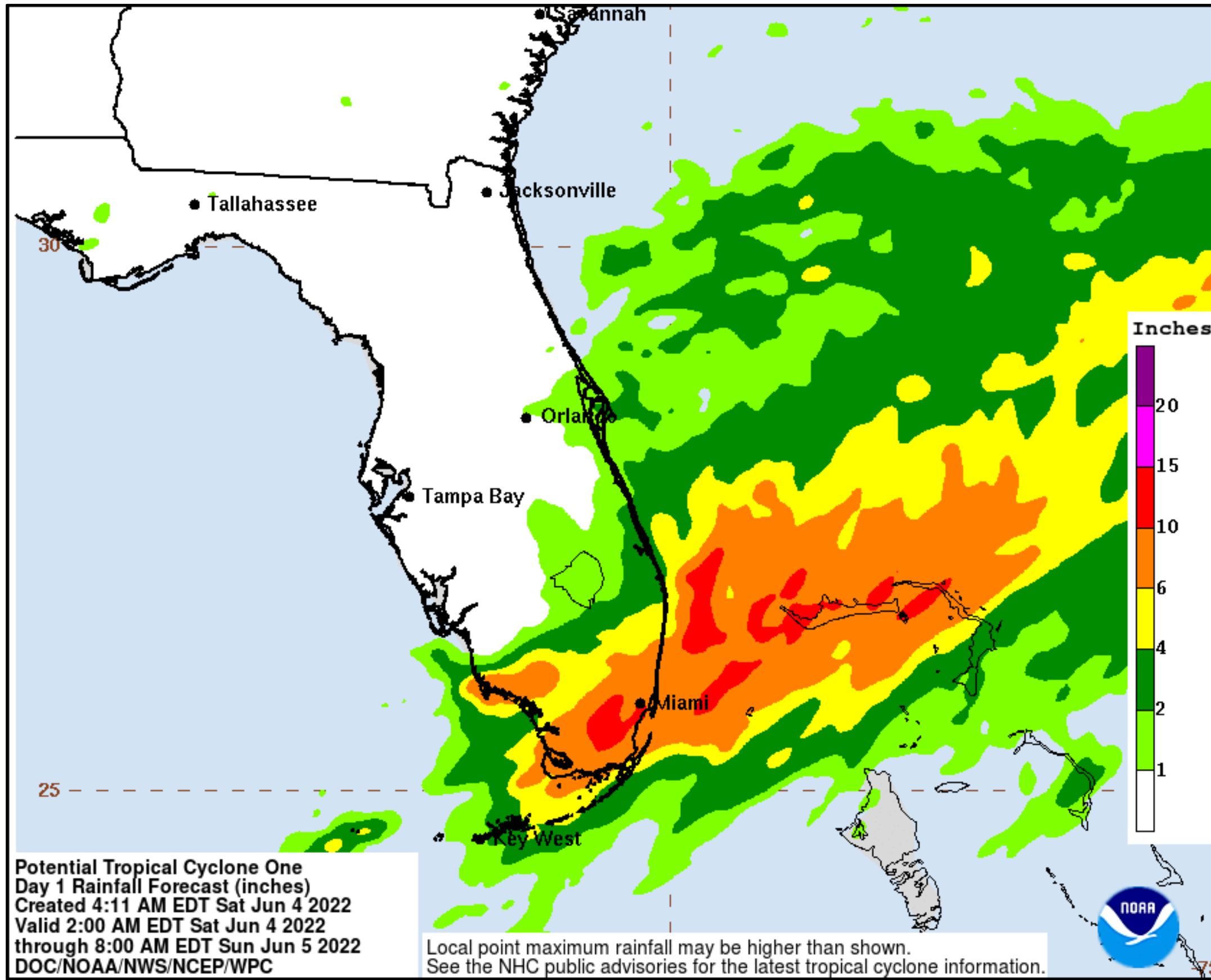
- Southwest Florida: **by 3 pm**
- Florida Keys: **by 5 pm**
- Florida Atlantic coast: **by 8 pm**

Expected Storm Total Rainfall and Chance of Rainfall Flooding



Tropical Analysis and Forecast Branch
NWS National Hurricane Center

Potential Tropical Cyclone One



- Total rainfall in inches during the time span stated on the map.

Risk of rainfall exceeding flash flood guidance within 25 miles of a point

HIGH: > 50% **SLGT: 10%-20%**
MDT: 20%-50% **MRGL: 5%-10%**

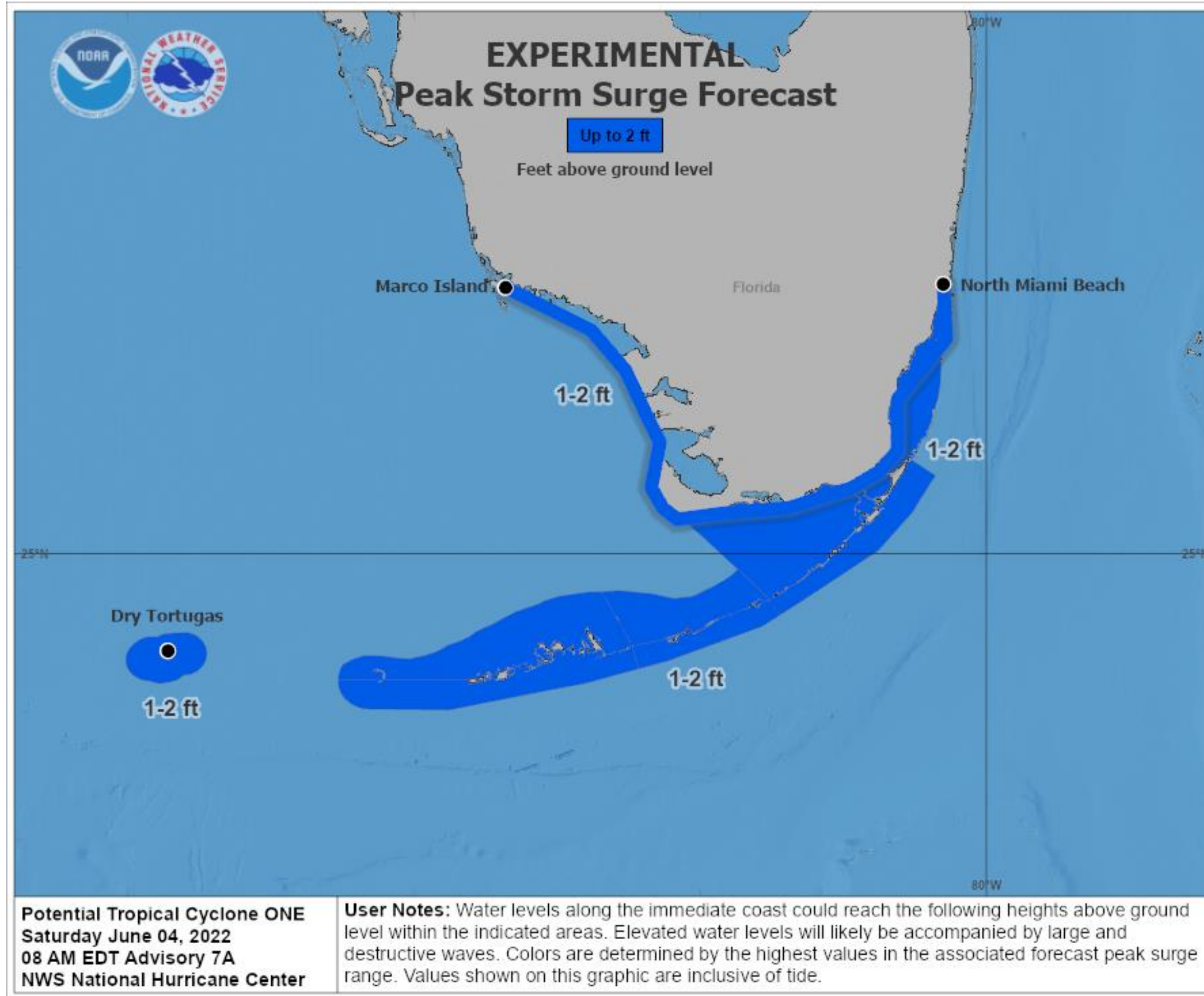
Refer to map legend for Valid Time

Potential Peak Storm Surge



Tropical Analysis and Forecast Branch
NWS National Hurricane Center

Potential Tropical Cyclone One



- No Storm Surge Warning
- 1 to 2 ft Surge Possible

Tornado Outlook – Day 1

Potential Tropical Cyclone One



Tropical Analysis and Forecast Branch
NWS National Hurricane Center

Image from NWS Storm Prediction Center



Wind And Waves



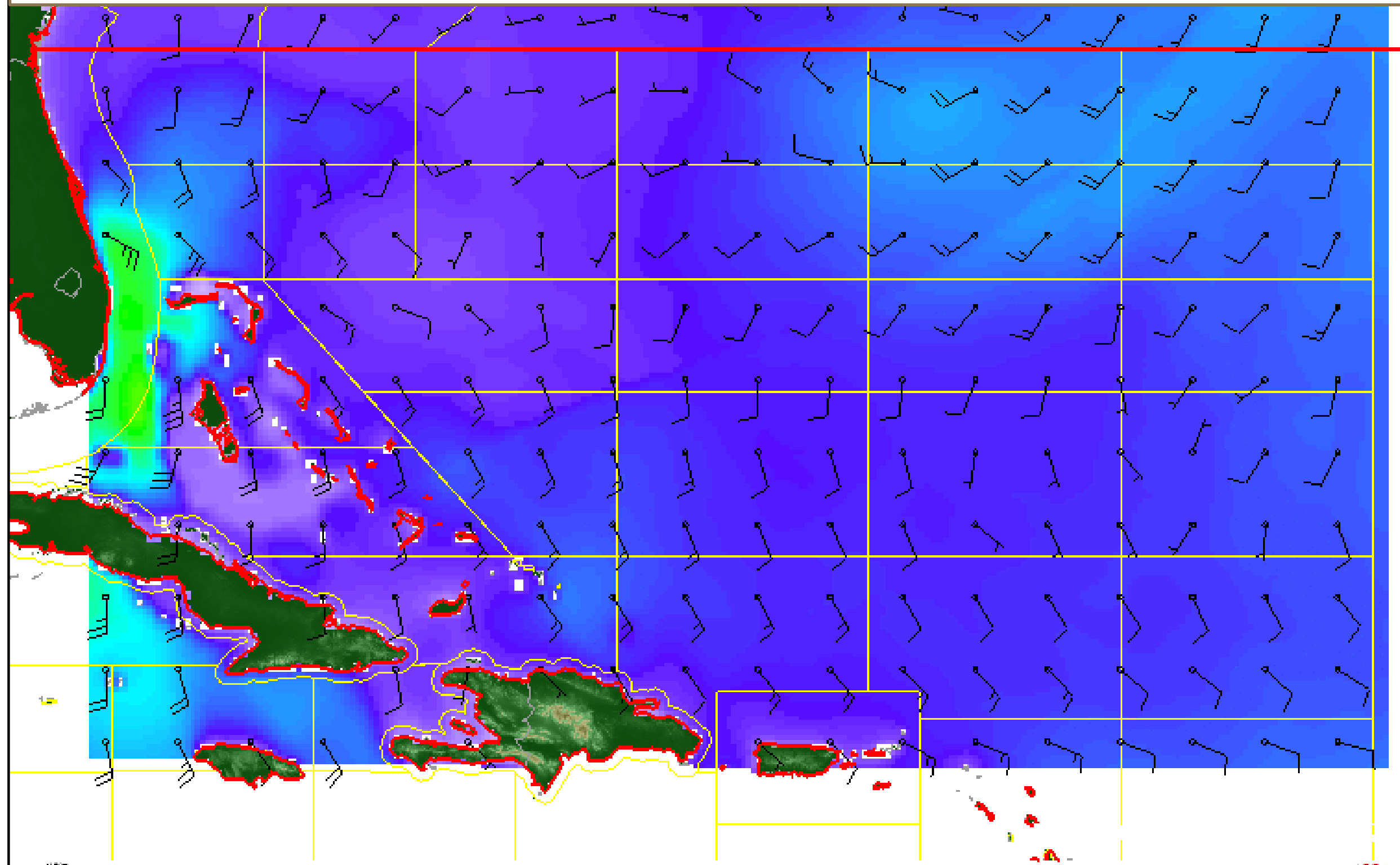
Tropical Analysis and Forecast Branch
NWS National Hurricane Center

Potential Tropical Cyclone One

■ Wave heights are in feet



4' 8' 12' 16' 20' 24' 28' 32' 36'



NHC/TAFB Gridded Marine Forecasts (N of 31N provided by OPC)

CURRENT CONDITIONS
8 AM SATURDAY
PEAK WINDS: 35 KT
PEAK SEAS: 12 FT

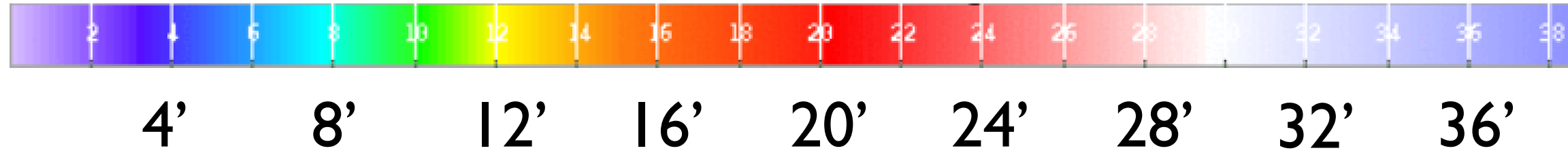
Wind And Waves

Potential Tropical Cyclone One

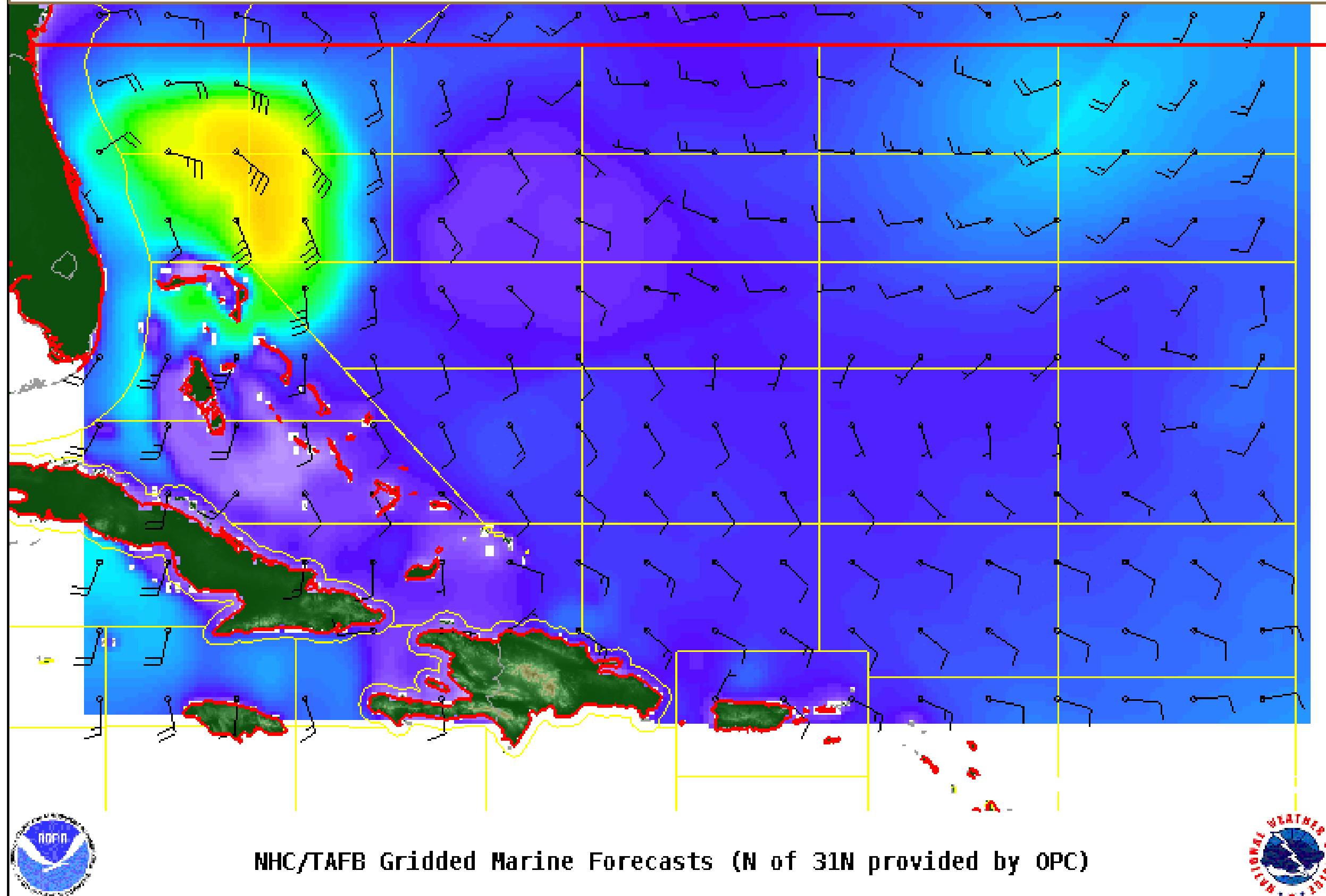


Tropical Analysis and Forecast Branch
NWS National Hurricane Center

■ Wave heights are in feet



8 PM SATURDAY
PEAK WINDS: 35 KT
PEAK SEAS: 15 FT



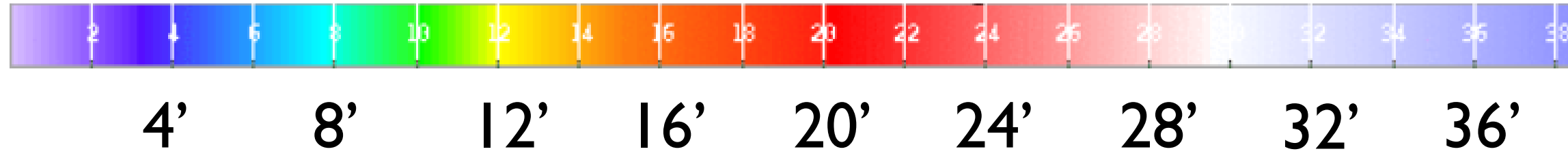
Wind And Waves

Potential Tropical Cyclone One

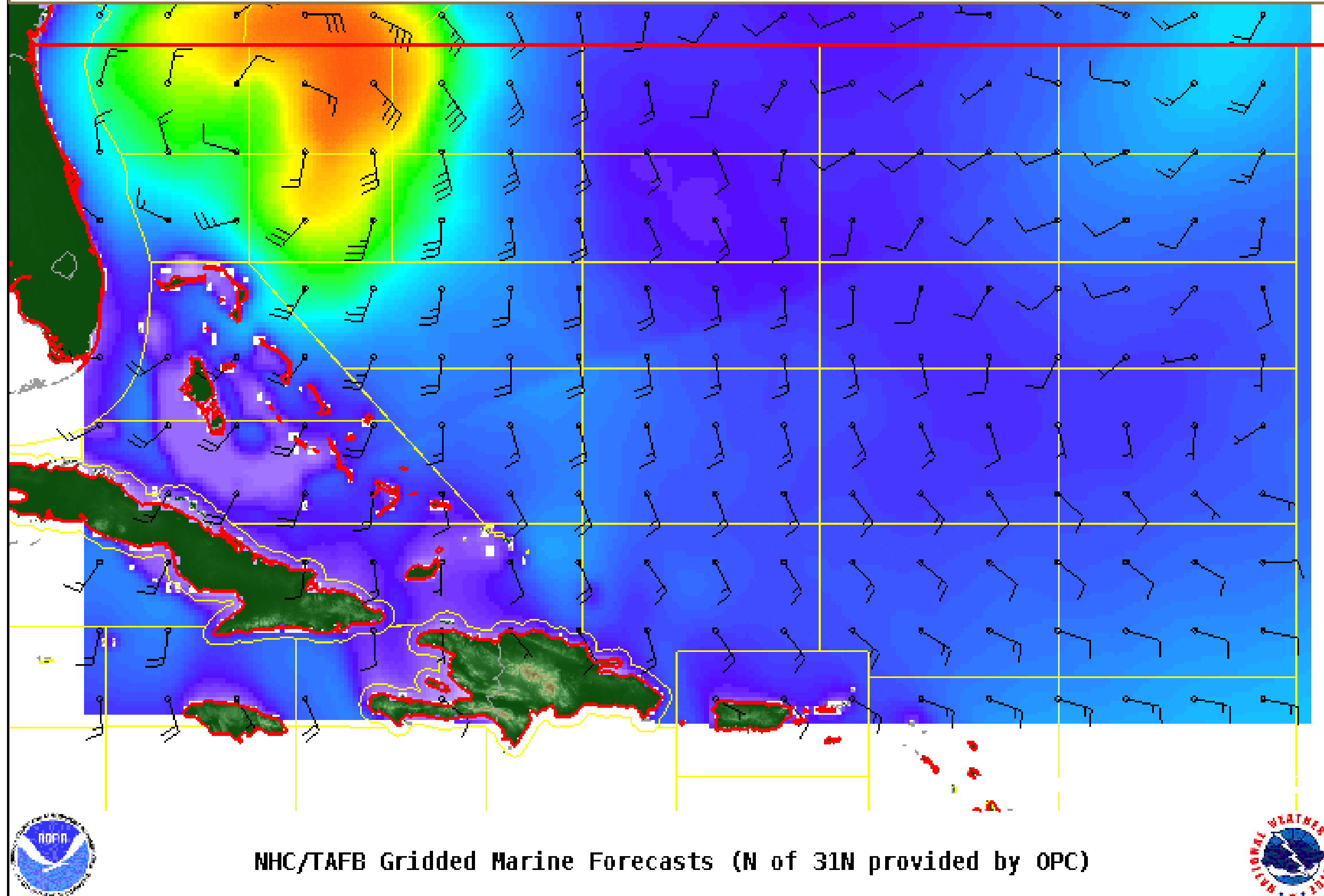


Tropical Analysis and Forecast Branch
NWS National Hurricane Center

■ Wave heights are in feet



8 AM SUNDAY
PEAK WINDS: 35 KT
PEAK SEAS: 18 FT



NHC/TAFB Gridded Marine Forecasts (N of 31N provided by OPC)

Key Messages

Potential Tropical Cyclone One

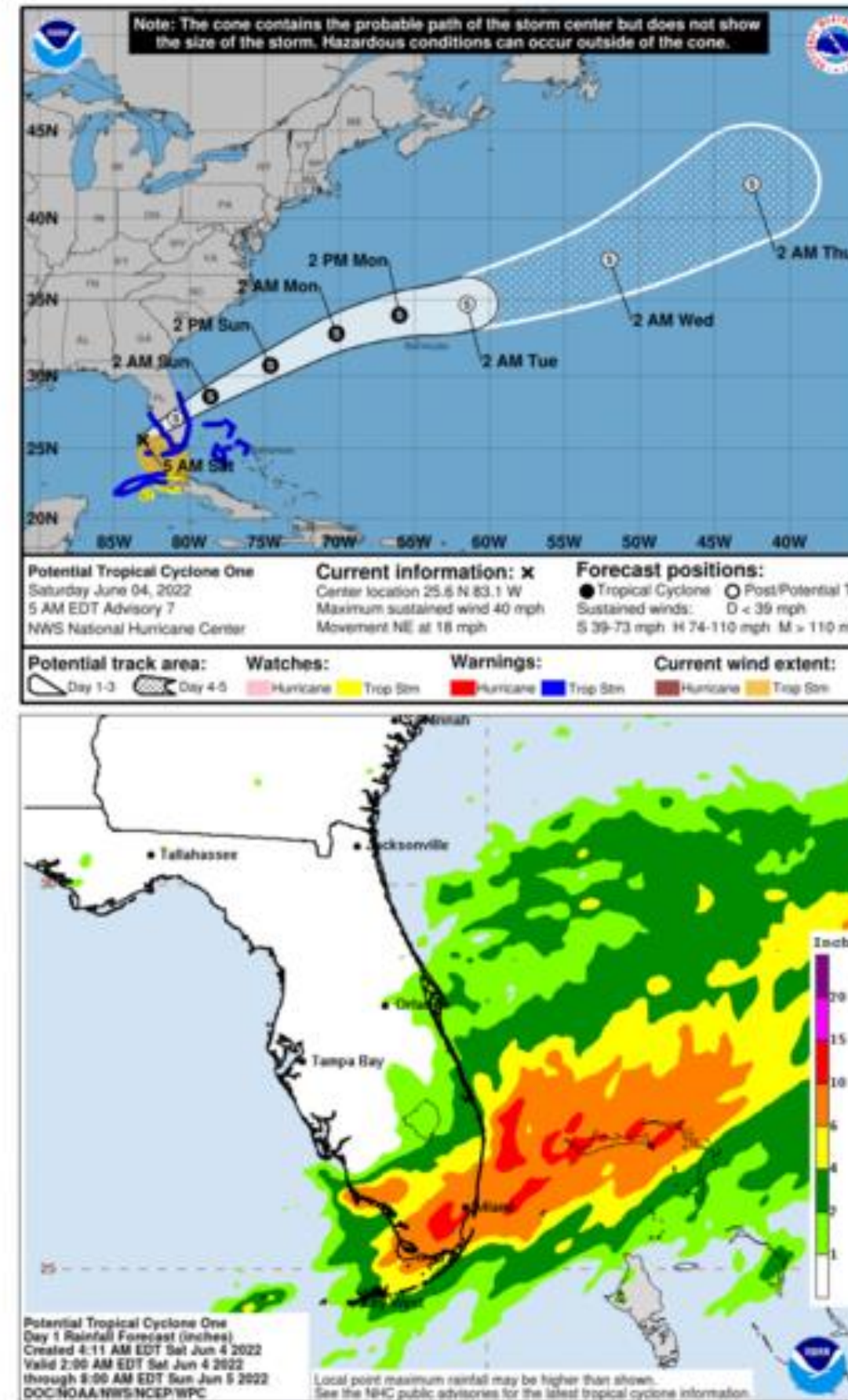


Tropical Analysis and Forecast Branch
NWS National Hurricane Center

Key Messages for Potential Tropical Cyclone One Advisory 7: 5:00 AM EDT Sat Jun 04, 2022

1. Heavy rainfall will continue to affect portions of South Florida and the Keys as well as the northwestern Bahamas today. Considerable flash and urban flooding is expected across South Florida. Flash and urban flooding is possible across the Florida Keys and the northwestern Bahamas.

2. Tropical storm conditions are expected in the warning area in Florida today, mainly in squalls, and in the northwestern Bahamas by this afternoon.



For more information go to hurricanes.gov

Marine Key Messages:

- Gale Force Winds Atlantic waters into tonight
- Seas increasing over portions of Atlantic waters to 18 ft by tonight

IMPACTS FOR D7 (through next 5 days)

Winds – **Medium**

Storm Surge – **Low**

Rainfall/Flash Flooding – **High**

Tornadoes – **Low**

Waves - **Medium**



POTENTIAL TROPICAL CYCLONE ONE BRIEFING

You can contact the Tropical Analysis and Forecast Branch at
305-229-4424

You can always find get the latest graphics and information for this storm at www.hurricanes.gov



NHC_TAFB

www.nhc.noaa.gov