

IMPACTS FOR D7:

Winds – **Low** (PR & USVI)

Storm Surge – **Low** (PR & USVI)

Rainfall/Flash Flooding – **Moderate** to **High** (PR & USVI)

Tornadoes – **Low**

Waves – **Low** to **Moderate** (PR & USVI)

TROPICAL DEPRESSION THIRTEEN BRIEFING



8:15 AM EDT

Friday, August 21st, 2020

Prepared by:

Jeff Lewitsky

*Tropical Analysis and Forecast Branch
NWS National Hurricane Center*

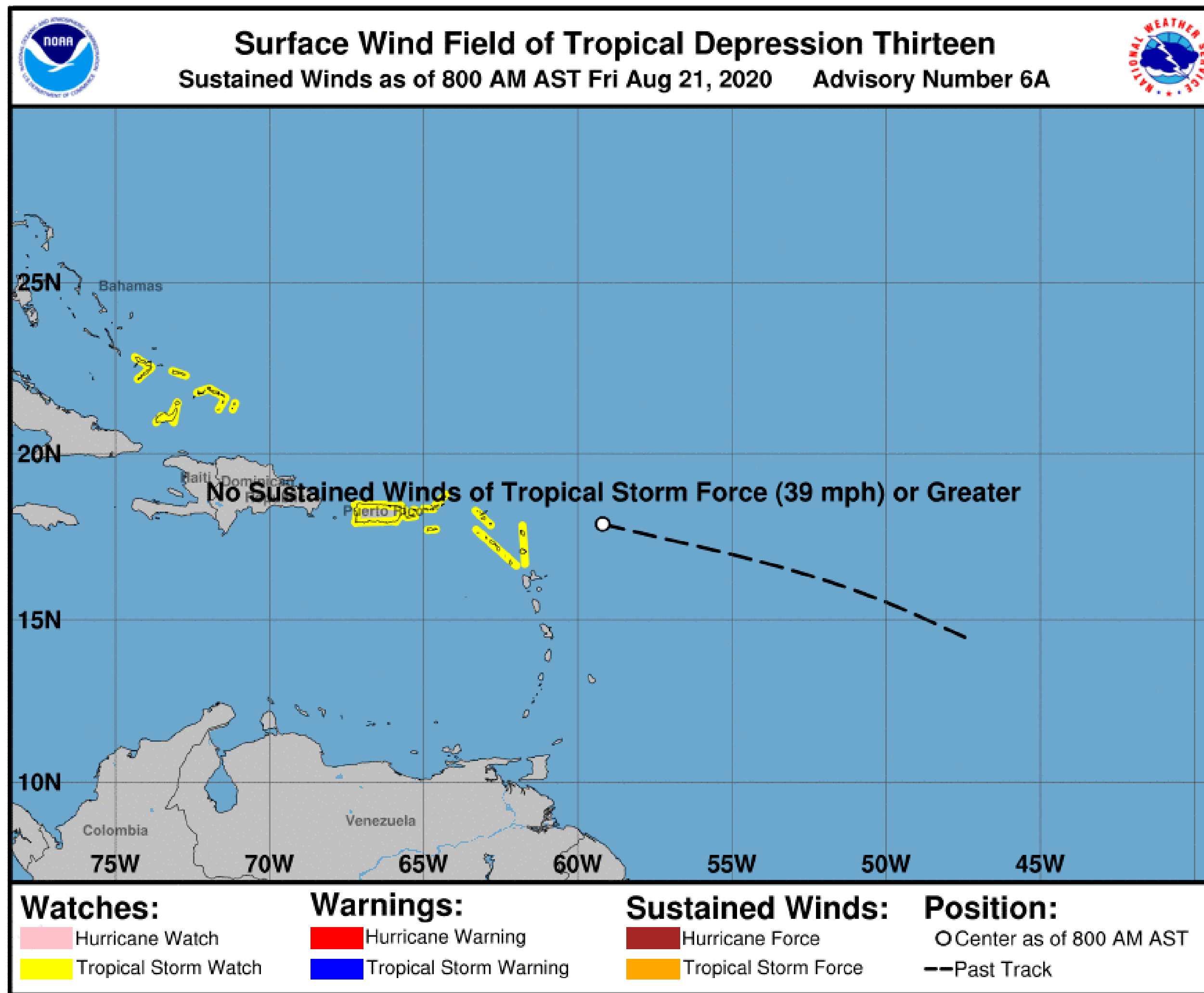


Situation Overview



Tropical Analysis and Forecast Branch
NWS National Hurricane Center

Tropical Depression Thirteen



...DEPRESSION NEARING THE NORTHERN LEEWARD ISLANDS...

Summary of 800 AM AST...

LOCATION...17.9N 59.2W

ABOUT 255 MI...415 KM E OF THE NORTHERN LEEWARD ISLANDS

MAXIMUM SUSTAINED WINDS...35 MPH

PRESENT MOVEMENT...WNW OR 285 DEGREES AT 21 MPH

PEAK SEAS...11 FT

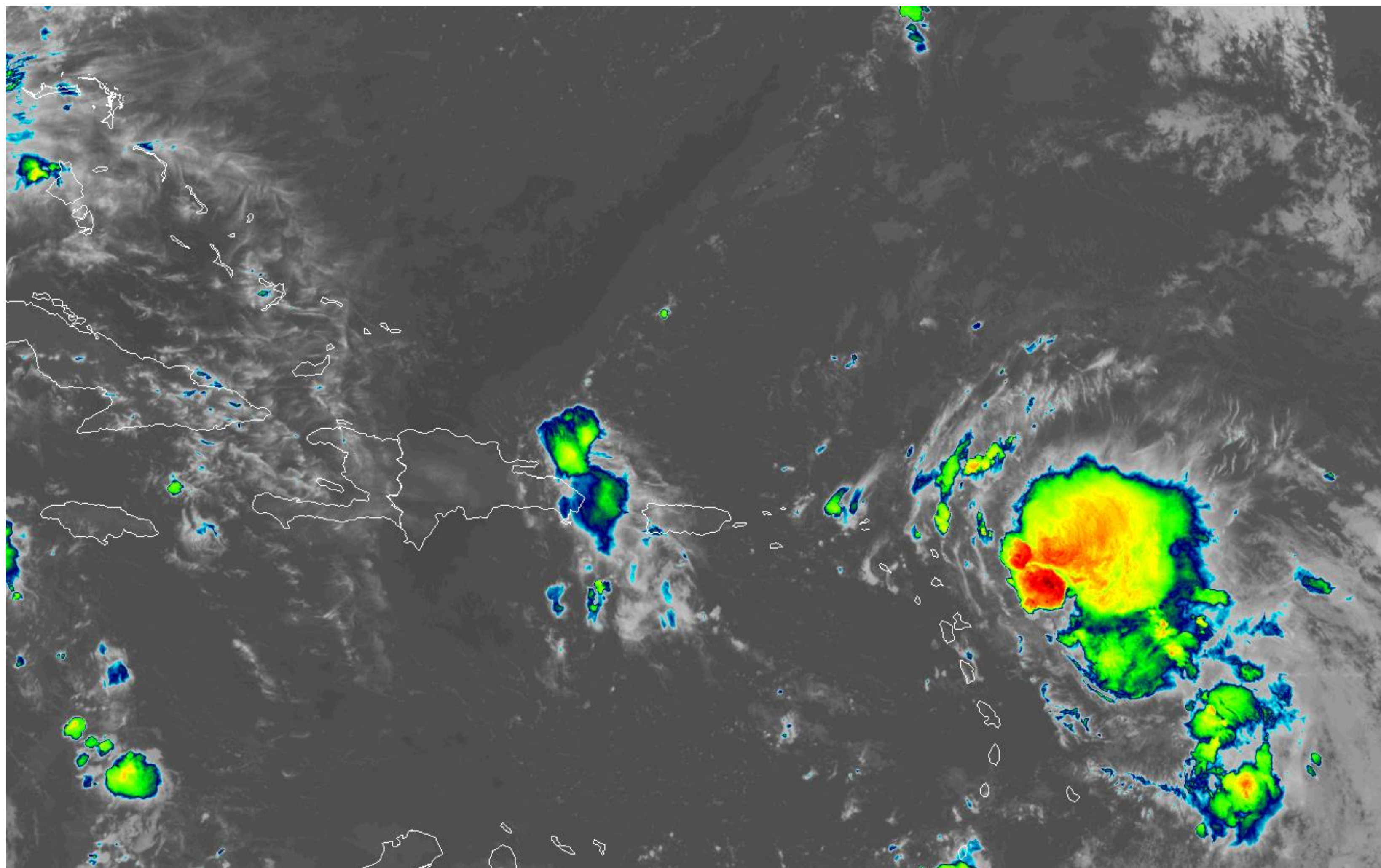
Maximum sustained winds remain near 35 mph (55 km/h) with higher gusts. Gradual strengthening is forecast, and the depression is likely to become a tropical storm by the weekend.

Current Satellite View

Tropical Depression Thirteen



Tropical Analysis and Forecast Branch
NWS National Hurricane Center

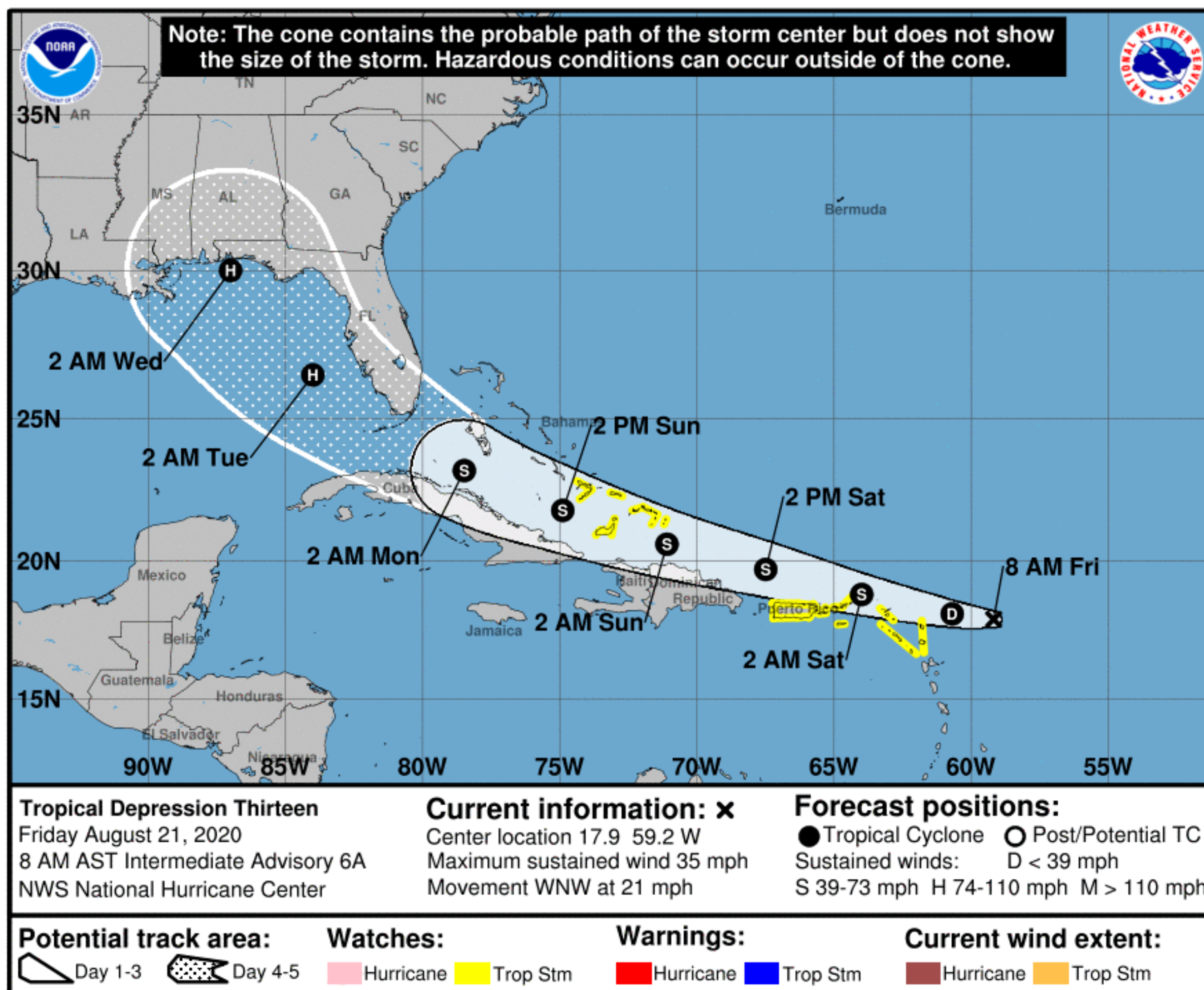


Forecast Information

Tropical Depression Thirteen



Tropical Analysis and Forecast Branch
NWS National Hurricane Center



- Move near or north of the northern Leeward Islands later today,
- Move near or north of the U.S. Virgin Islands and Puerto Rico on Saturday
- Gradual strengthening is forecast, and the depression is likely to become a Tropical Storm by the weekend.
- Locally Heavy Rainfall over PR & USVI could lead to Flash and Urban Flooding, increased potential for Mudslides.

** Swaths are calculated using average track errors and actual track may be well inside, or possibly outside the potential track areas indicated.

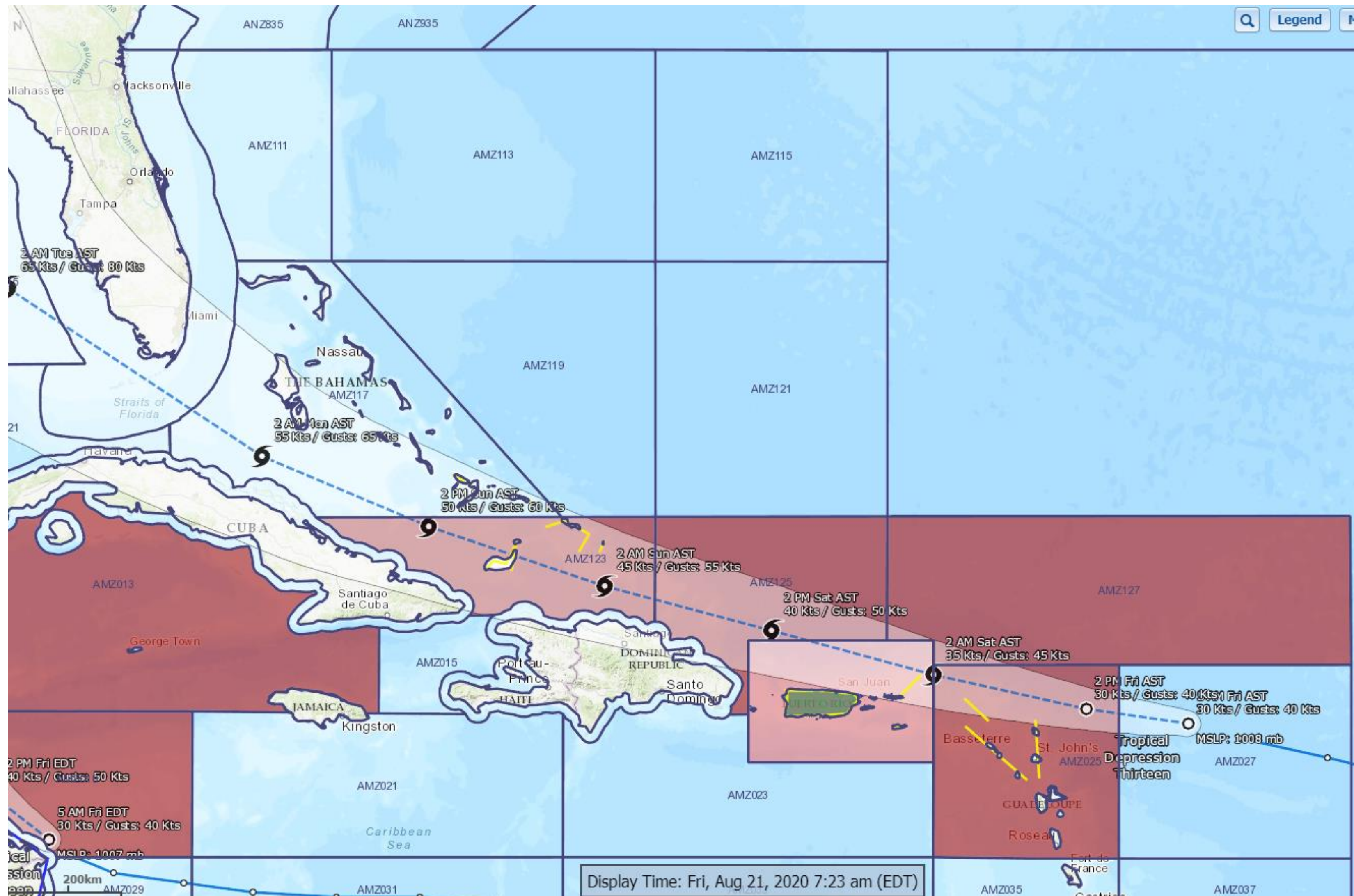
NOTE: Do not focus on the exact track. Impacts can occur well outside the area enclosed by the cone.

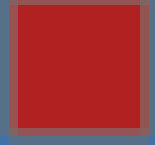
Hazards Map

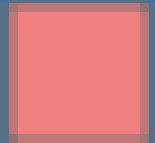
Tropical Depression Thirteen



Tropical Analysis and Forecast Branch
NWS National Hurricane Center



 Tropical Storm Warning

 Tropical Storm Watch

 Flash Flood Watch

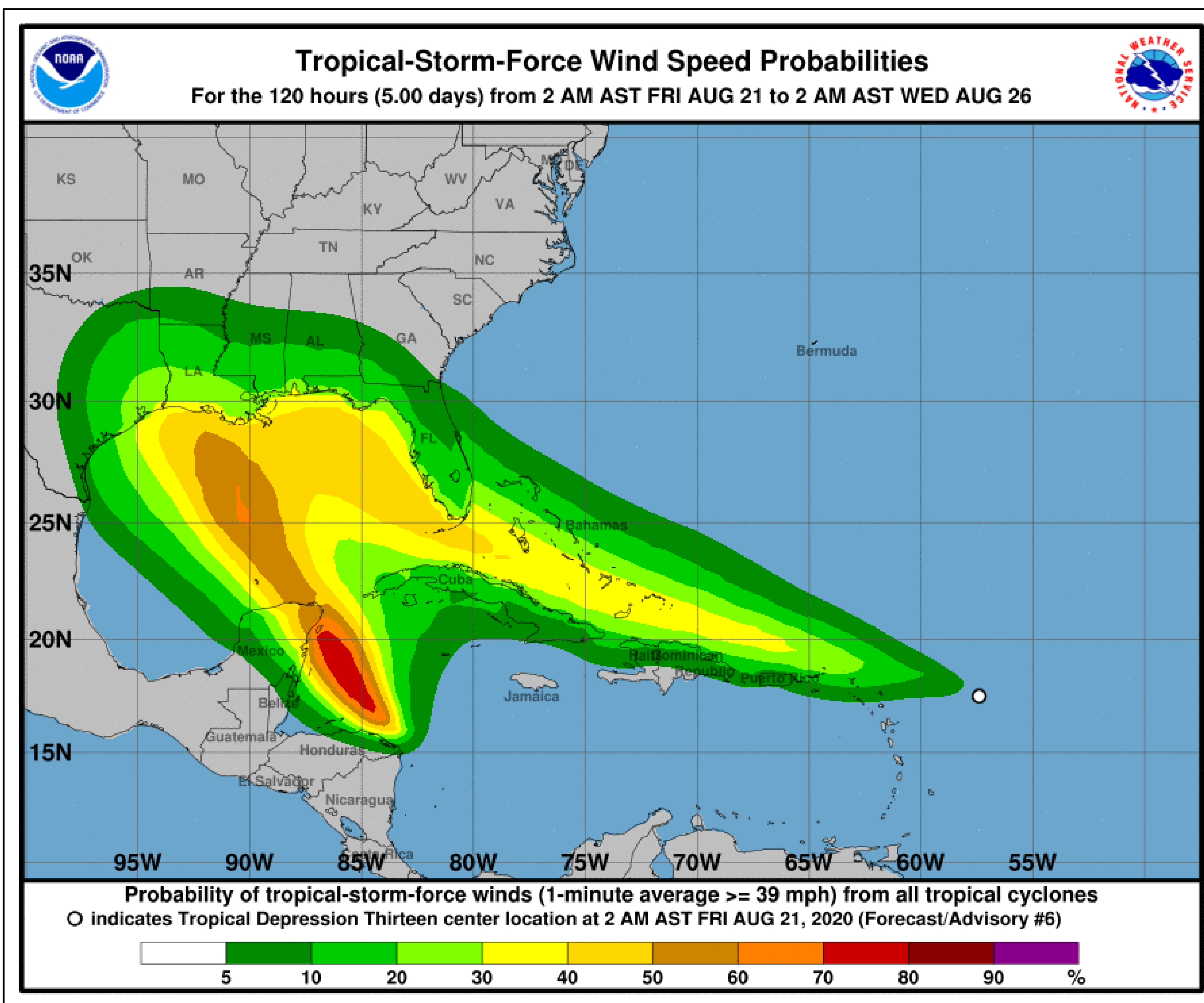
■ <https://nowcoast.noaa.gov/>

T.S. Wind Speed Probabilities

Tropical Depression Thirteen



Tropical Analysis and Forecast Branch
NWS National Hurricane Center



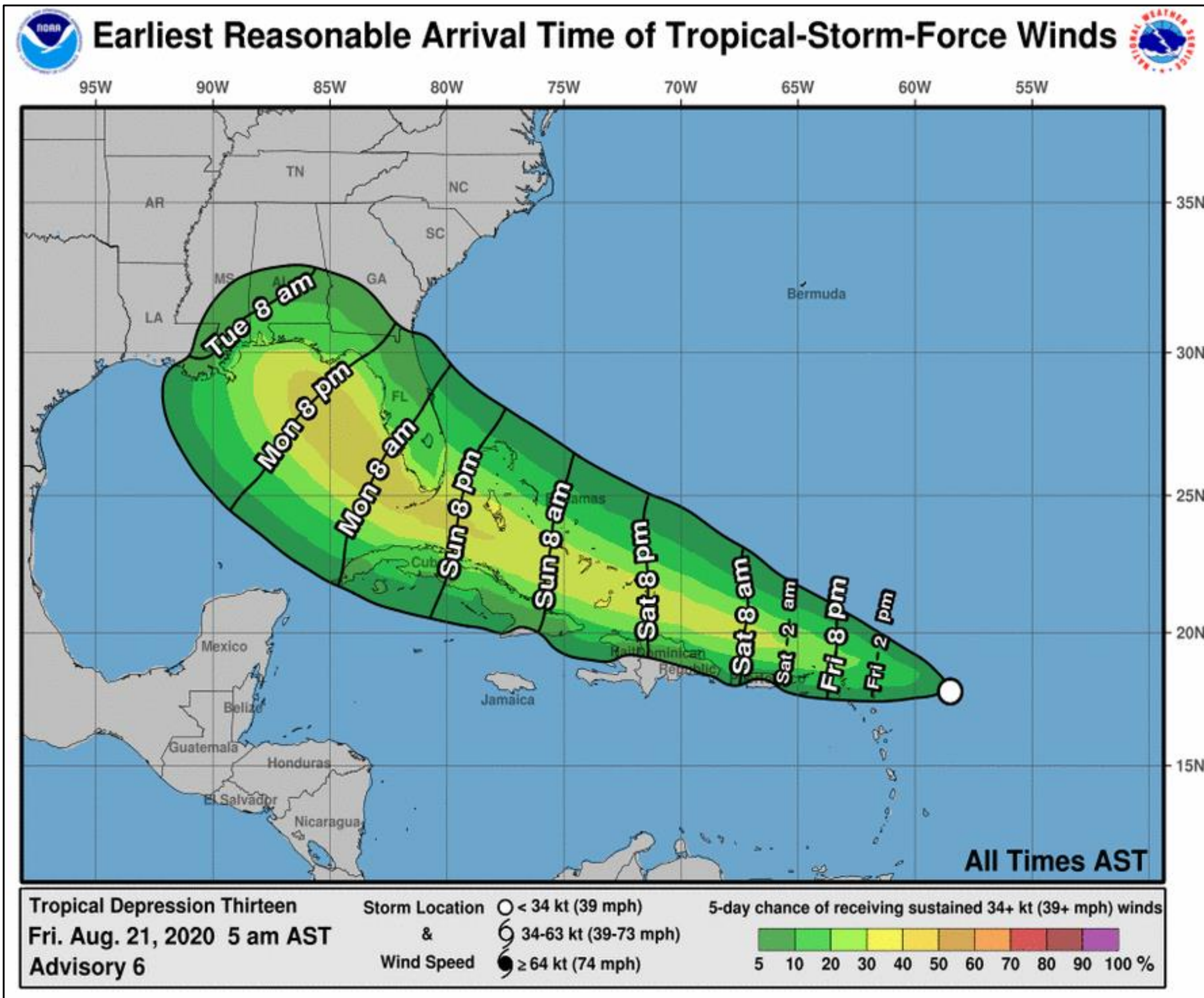
- St. Thomas: 15% Chance
 - San Juan: 5% Chance
 - Key West: 40% Chance
 - Miami: 30% Chance
 - Ft. Lauderdale: 25% Chance
 - West Palm Beach 20% Chance
 - Cape Canaveral: 10% Chance
 - Jacksonville: 5% Chance
 - Tampa: 25% Chance
- Probabilities of sustained tropical storm force winds (34 kt to 63 kt) over the next 5 days, based off this cyclone's wind radii and track.
- See the color bar below the image for more details.

Earliest Reasonable Time of Arrival

Tropical Depression Thirteen



Tropical Analysis and Forecast Branch
NWS National Hurricane Center



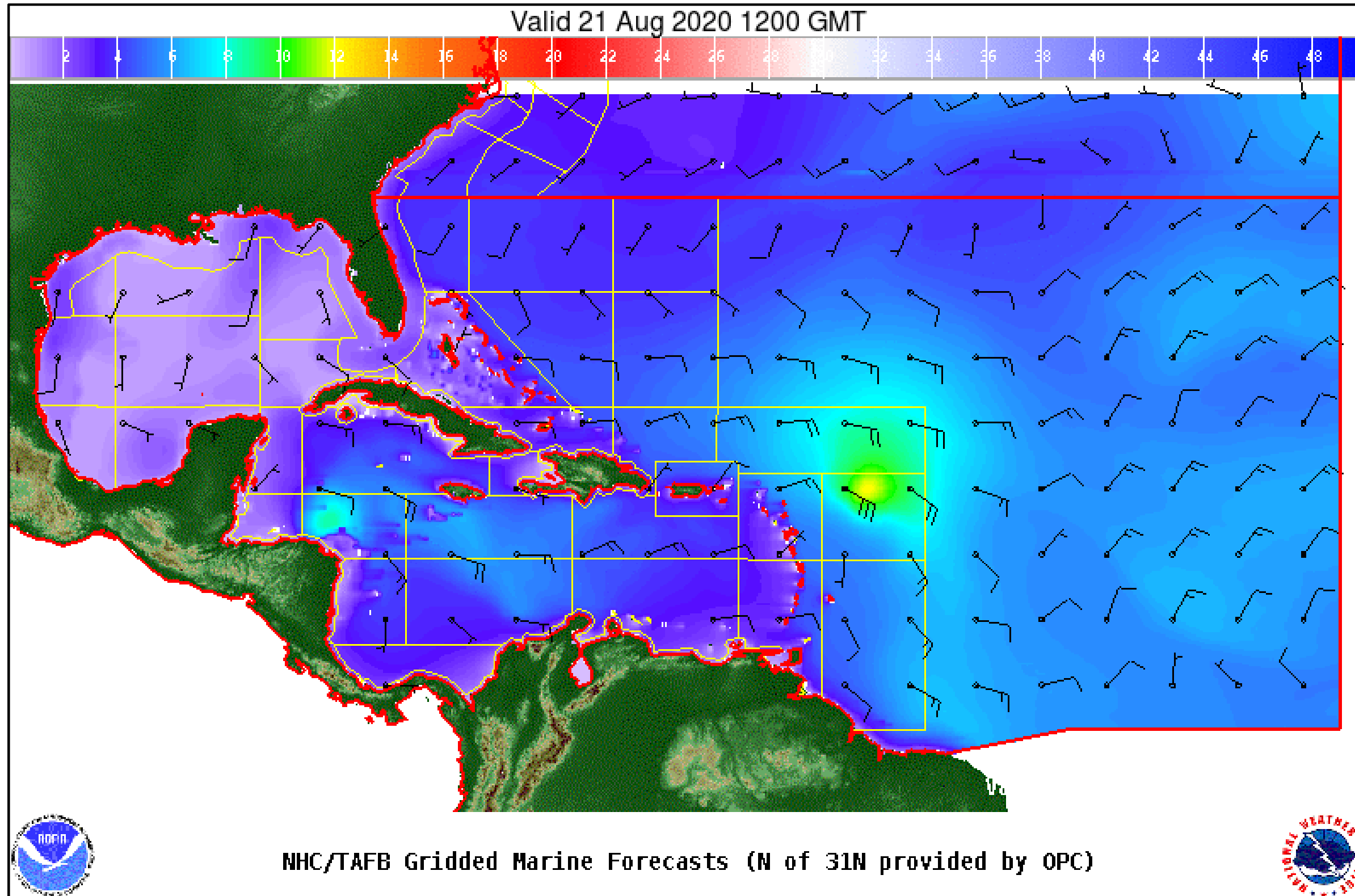
- St. Thomas: Today 8pm AST
- San Juan: Saturday 2am AST
- Key West: Monday 2am AST
- Miami: Monday 2am AST
- Ft. Lauderdale: Monday 2am AST
- West Palm Beach Monday 2am AST
- Cape Canaveral: Monday 2am AST
- Jacksonville: Monday 2pm AST
- Tampa: Monday 2pm AST
- The earliest reasonable time of arrival of Tropical Storm Force Winds (34kt to 63 kt) for this cyclone based off the current track and wind radii.
- See the color bar below the image for more details.

Wind And Waves

Tropical Depression Thirteen



Tropical Analysis and Forecast Branch
NWS National Hurricane Center



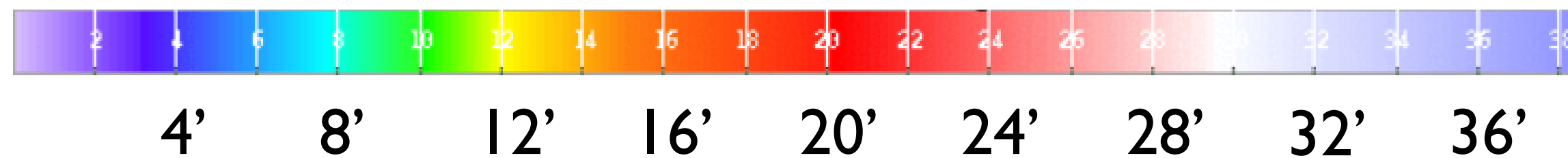
Current Conditions

Friday, 8am EDT, August 21st, 2020

Peak Winds: 30 KT

Peak Seas: 11 FT

- Wave heights are in feet

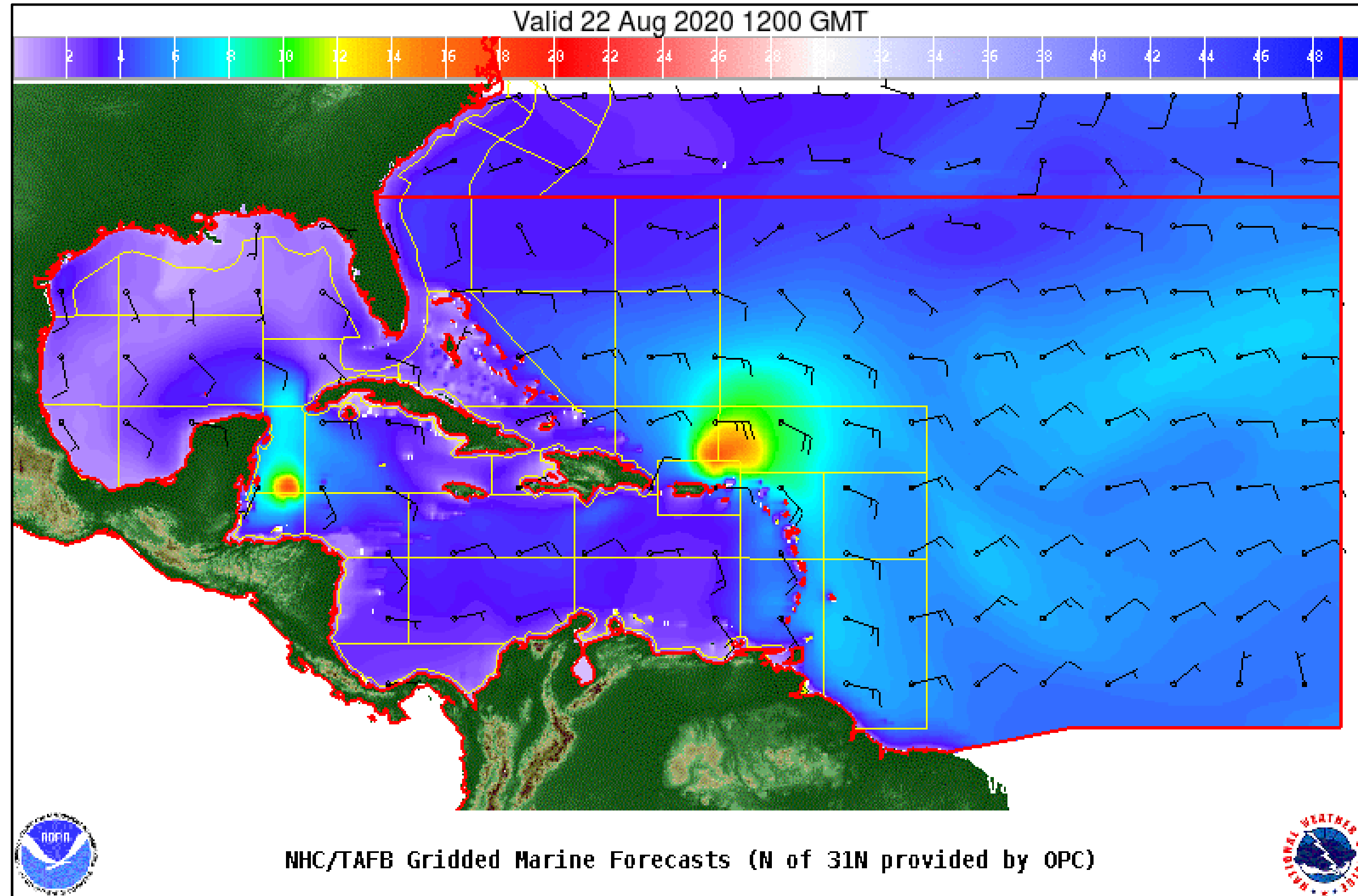


Wind And Waves

Tropical Depression Thirteen



Tropical Analysis and Forecast Branch
NWS National Hurricane Center



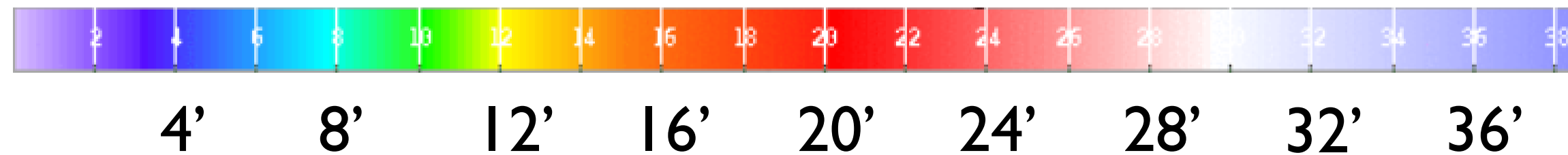
24 Hour Forecast

Saturday, 8am EDT, August 22nd, 2020

Peak Winds: 40 KT

Peak Seas: 15 FT

- Wave heights are in feet

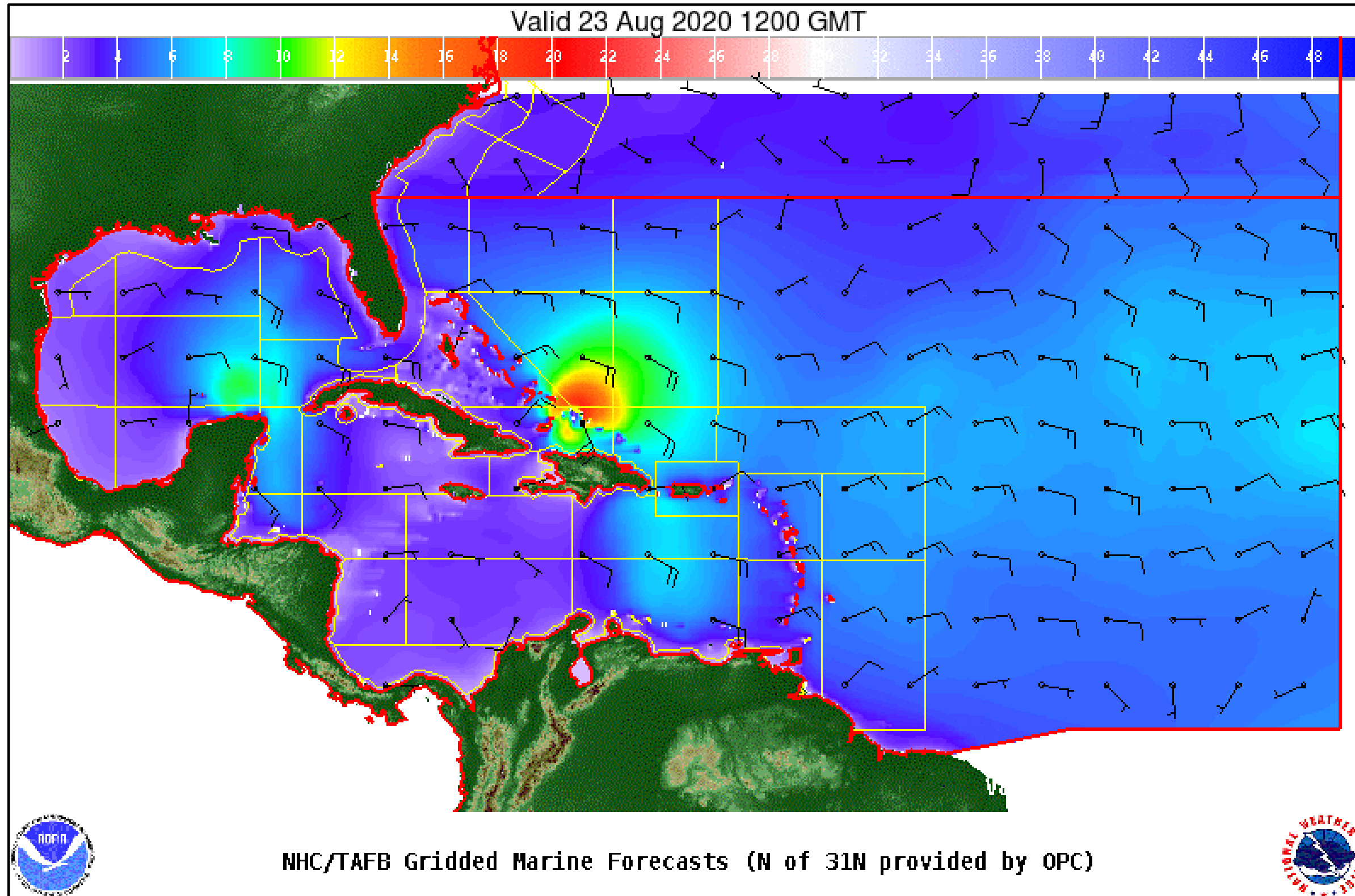


Wind And Waves

Tropical Depression Thirteen



Tropical Analysis and Forecast Branch
NWS National Hurricane Center



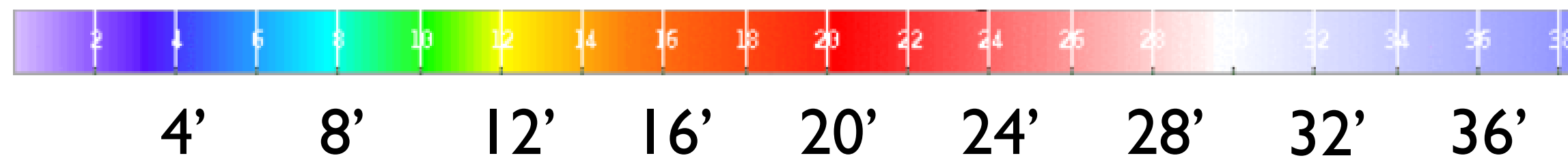
48 Hour Forecast

Sunday, 8am EDT, August 23rd, 2020

Peak Winds: 45 KT

Peak Seas: 18 FT

- Wave heights are in feet

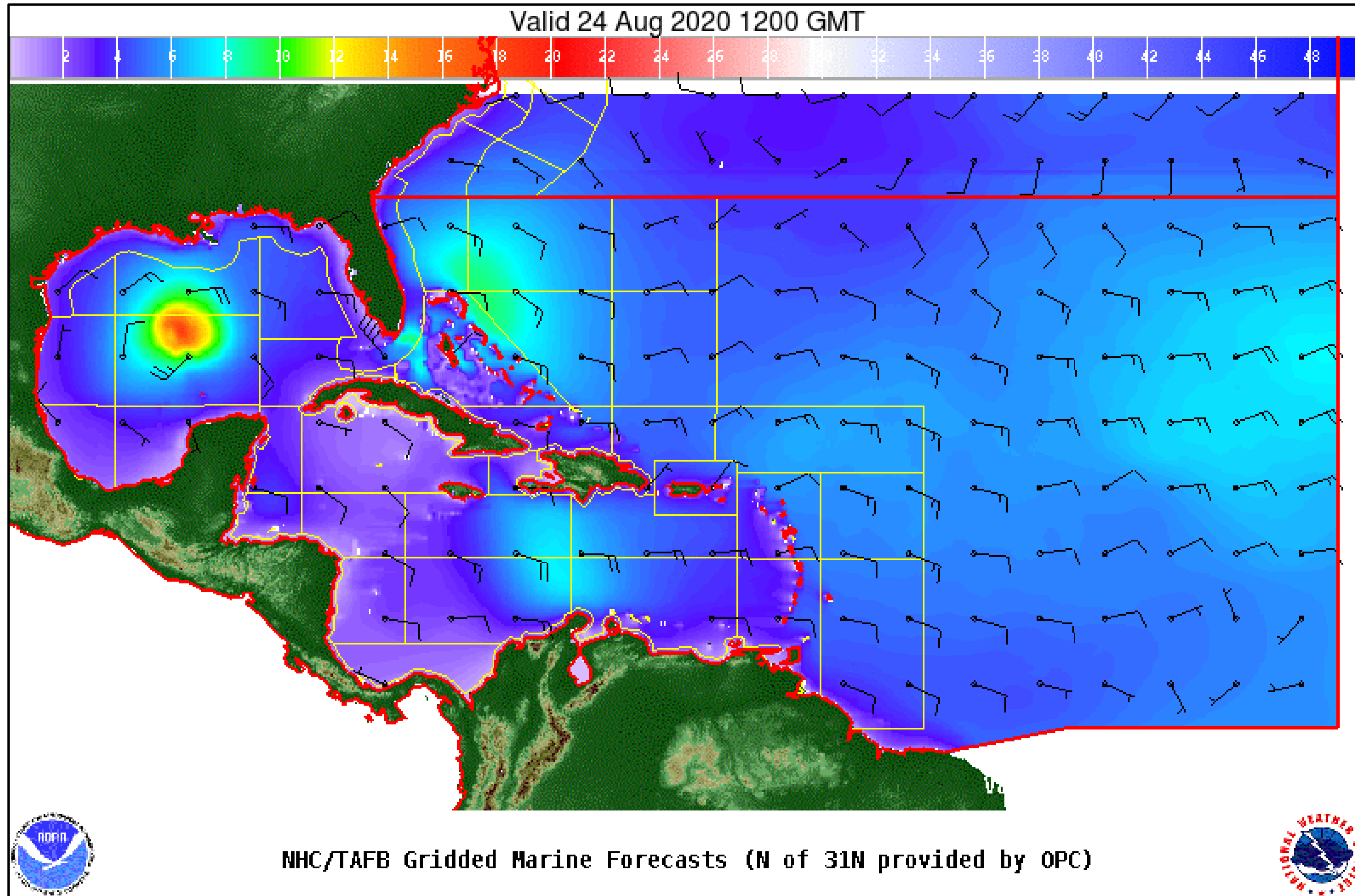


Wind And Waves

Tropical Depression Thirteen



Tropical Analysis and Forecast Branch
NWS National Hurricane Center



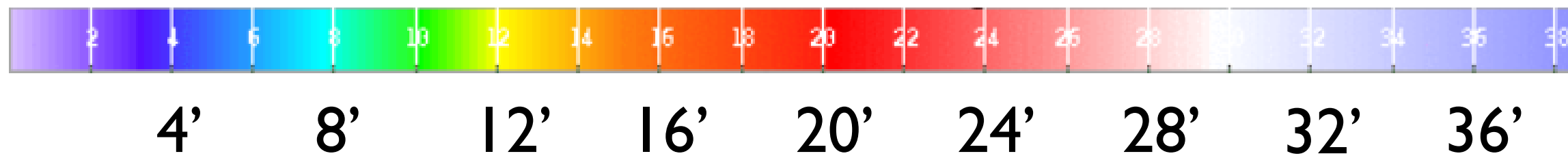
72 Hour Forecast

Monday, 8am EDT, August 24th, 2020

Peak Winds: 55 KT

Peak Seas: 12 FT

- Wave heights are in feet

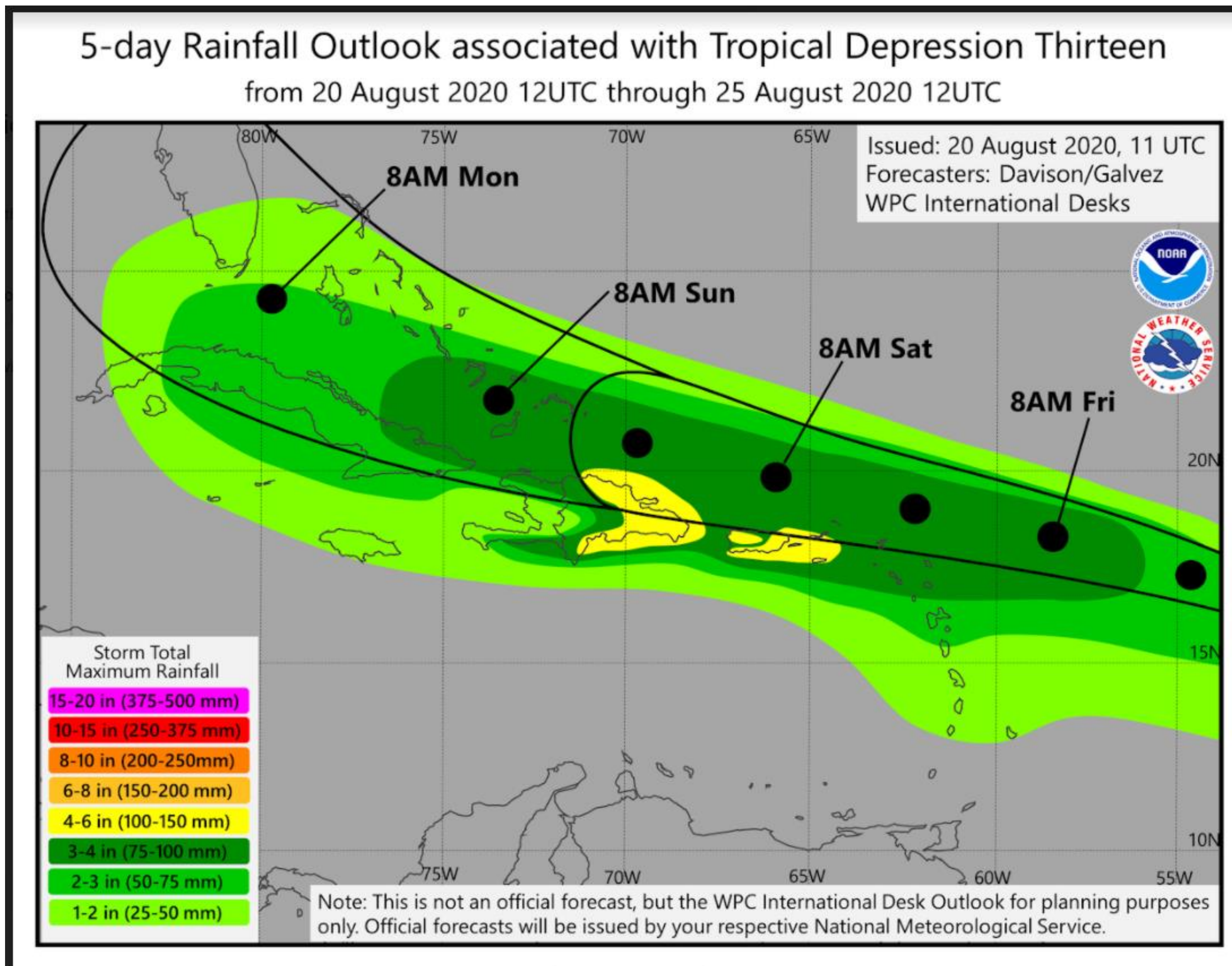


Expected Storm Total Rainfall

Tropical Depression Thirteen



Tropical Analysis and Forecast Branch
NWS National Hurricane Center



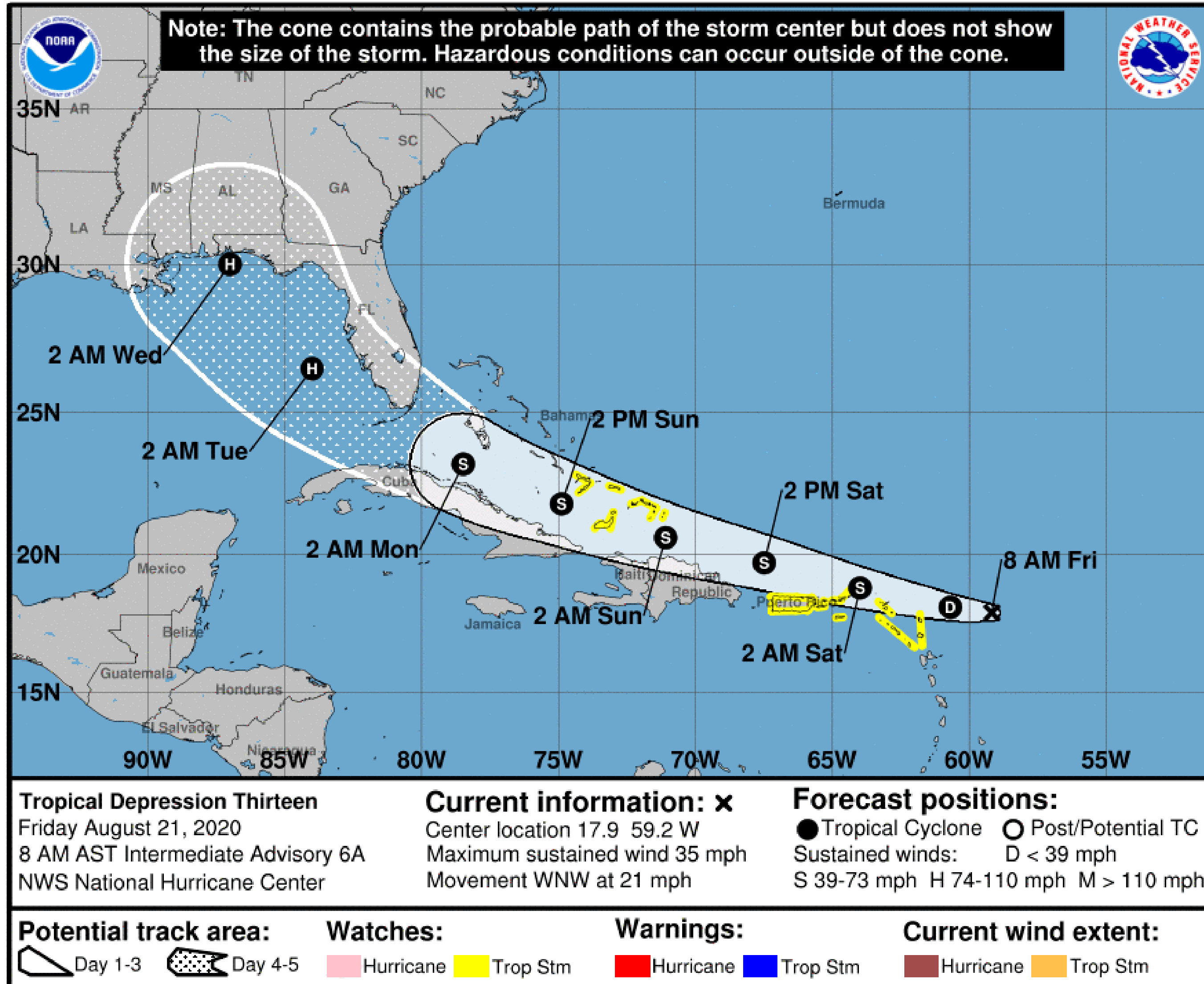
- Total rainfall in inches during the time span stated on the map.
- **3-6 inches total for PR & USVI**

Key Messages

Tropical Depression Thirteen



Tropical Analysis and Forecast Branch
NWS National Hurricane Center



Marine Key Messages:

- Strength: Gradual strengthening is forecast, and the depression is likely to become a tropical storm by the weekend.
- Movement: W-NW
- Peak Seas: 11 FT building to 22 FT
- Rainfall: 3-6 inches

IMPACTS FOR D7:

Winds – **Low** (PR & USVI)

Storm Surge – **Low** (PR & USVI)

Rainfall/Flash Flooding - **Moderate** to **High** (PR & USVI)

Tornadoes – **Low**

Waves – **Low** to **Moderate** (PR & USVI)



TROPICAL DEPRESSION THIRTEEN BRIEFING

You can contact the Tropical Analysis and Forecast Branch at
305-229-4424

*The Next Briefing Will Be:
Saturday 8:15 AM EDT*

You can always find get the latest graphics and information for this storm at www.hurricanes.gov



NHC_TAFB

www.nhc.noaa.gov