

**IMPACTS FOR D7 (through next 5 days)**

**Winds – Low**

**Storm Surge – Low**

**Rainfall/Flash Flooding – Moderate**

**Tornadoes – None**

**Waves - Moderate**

# TROPICAL STORM ELSA BRIEFING



4:00 PM EDT  
Thursday, July 1, 2021

Prepared by:

**Amanda Reinhart**

*Tropical Analysis and Forecast Branch  
NWS National Hurricane Center*

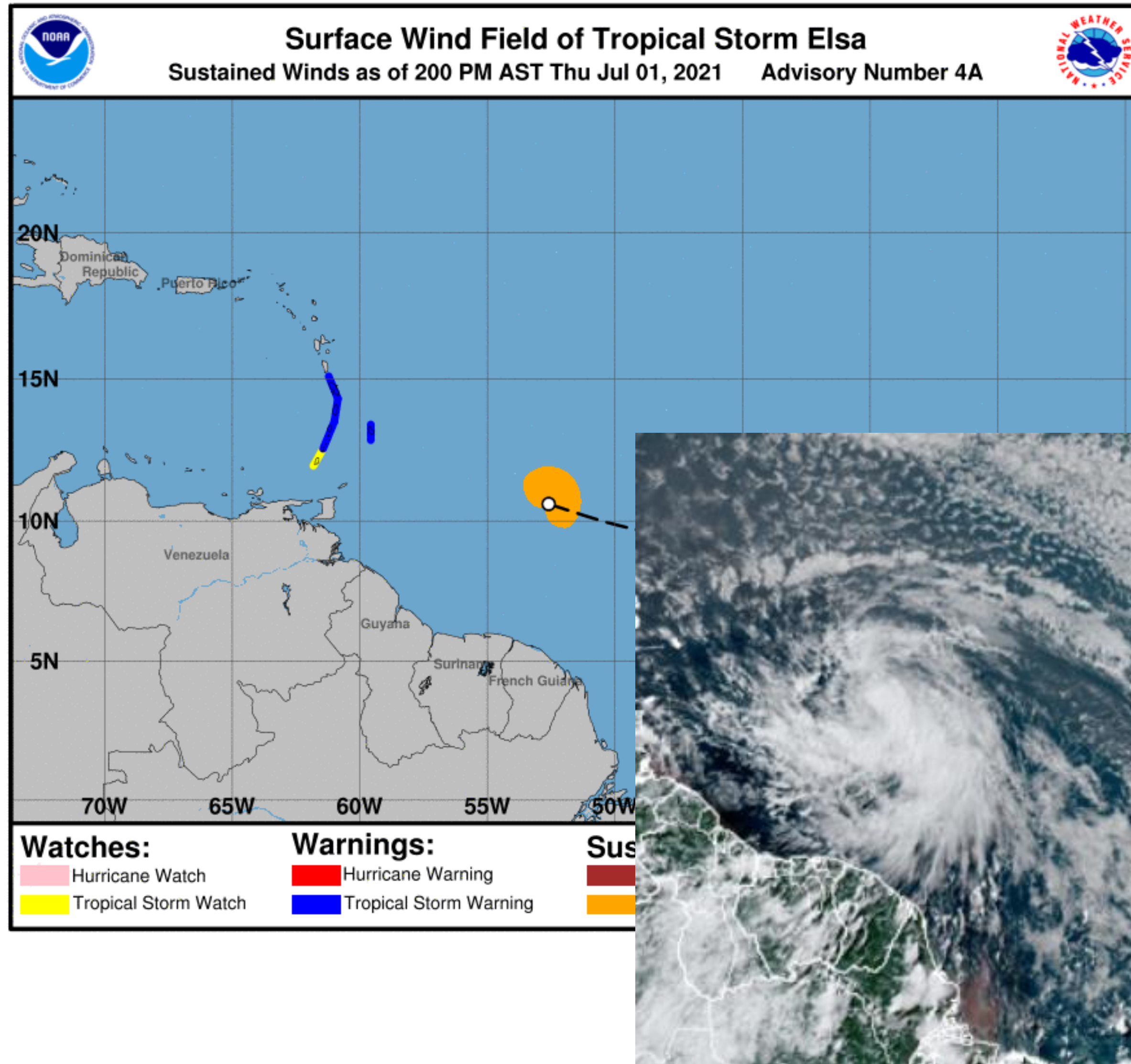


# Situation Overview

Tropical Storm Elsa



Tropical Analysis and Forecast Branch  
NWS National Hurricane Center



**...ELSA NOW MOVING RAPIDLY WEST-NORTHWESTWARD...**

## SUMMARY OF 200 PM EDT INFORMATION

-----  
LOCATION...10.6N 52.6W  
ABOUT 520 NM ESE OF WINDWARD IS.  
MAXIMUM SUSTAINED WINDS...40 KT  
PRESENT MOVEMENT...WNW AT 25 KT

## SIZE

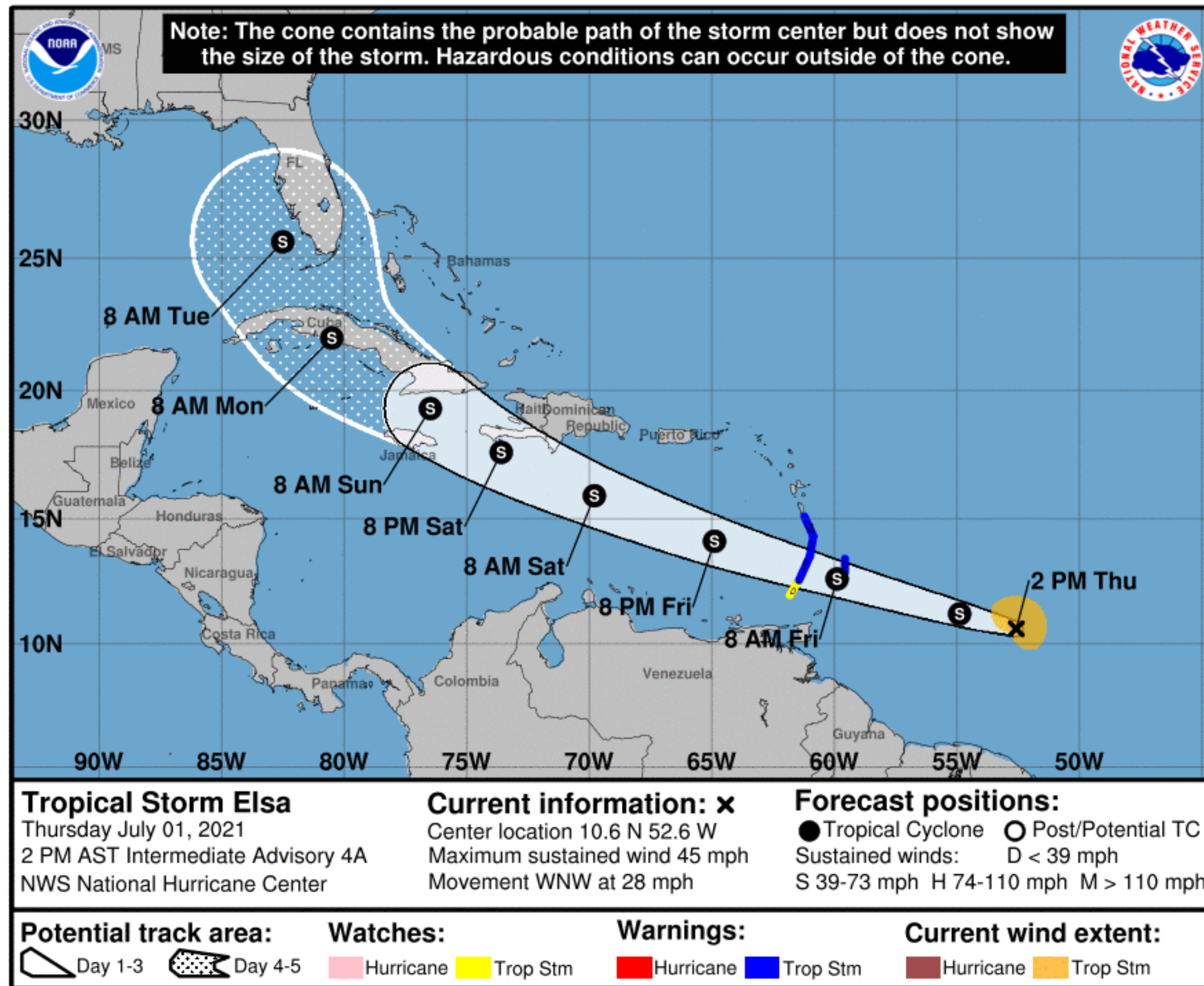
34 KT..... 80NE 70SE 0SW 80NW.  
12 FT SEAS..180NE 30SE 0SW 60NW.  
PEAK SEAS 16 FT

# Forecast Information

## Tropical Storm Elsa



Tropical Analysis and Forecast Branch  
NWS National Hurricane Center



**NOTE:** Do not focus on the exact track. Impacts can occur well outside the area enclosed by the cone.

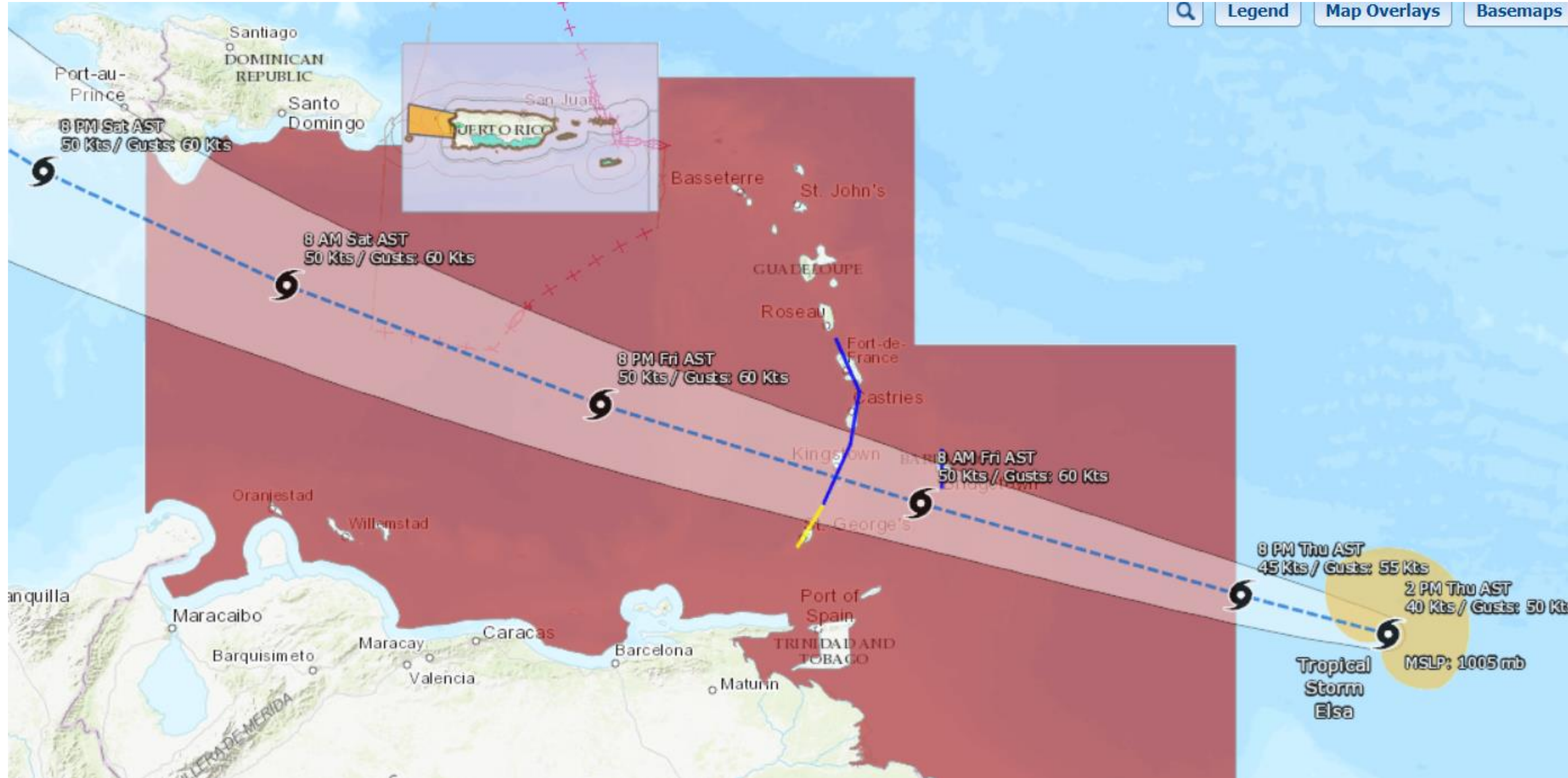
- **Elsa speeding up and expected to turn toward WNW at slightly slower rate of speed during next several days**
- **System expected to intensify some, but still unlikely to become a hurricane**
- **Uncertainty continues in both track and max winds very large beyond day 3**
- Current center forecast positions through the next 5 days (if applicable) illustrated by dots
- White swath of potential track is average track error added to each side of the forecast track through day 3
- Hatched swath of potential track is average track error added to each side of the forecast track days 4-5

# Hazards Map

## Tropical Storm Elsa



Tropical Analysis and Forecast Branch  
NWS National Hurricane Center



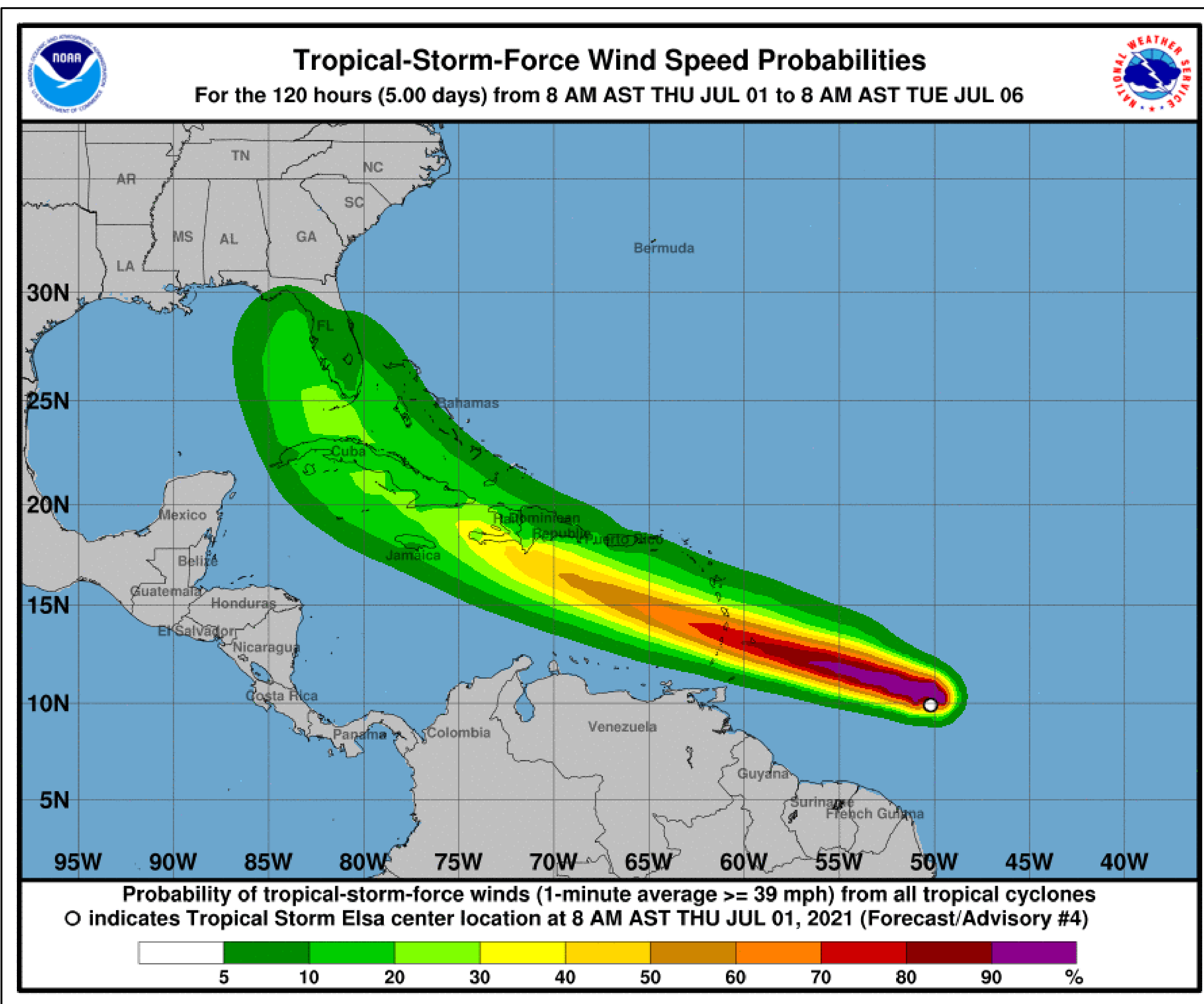
■ <https://nowcoast.noaa.gov/>

# T.S. Wind Speed Probabilities

Tropical Storm Elsa



Tropical Analysis and Forecast Branch  
NWS National Hurricane Center

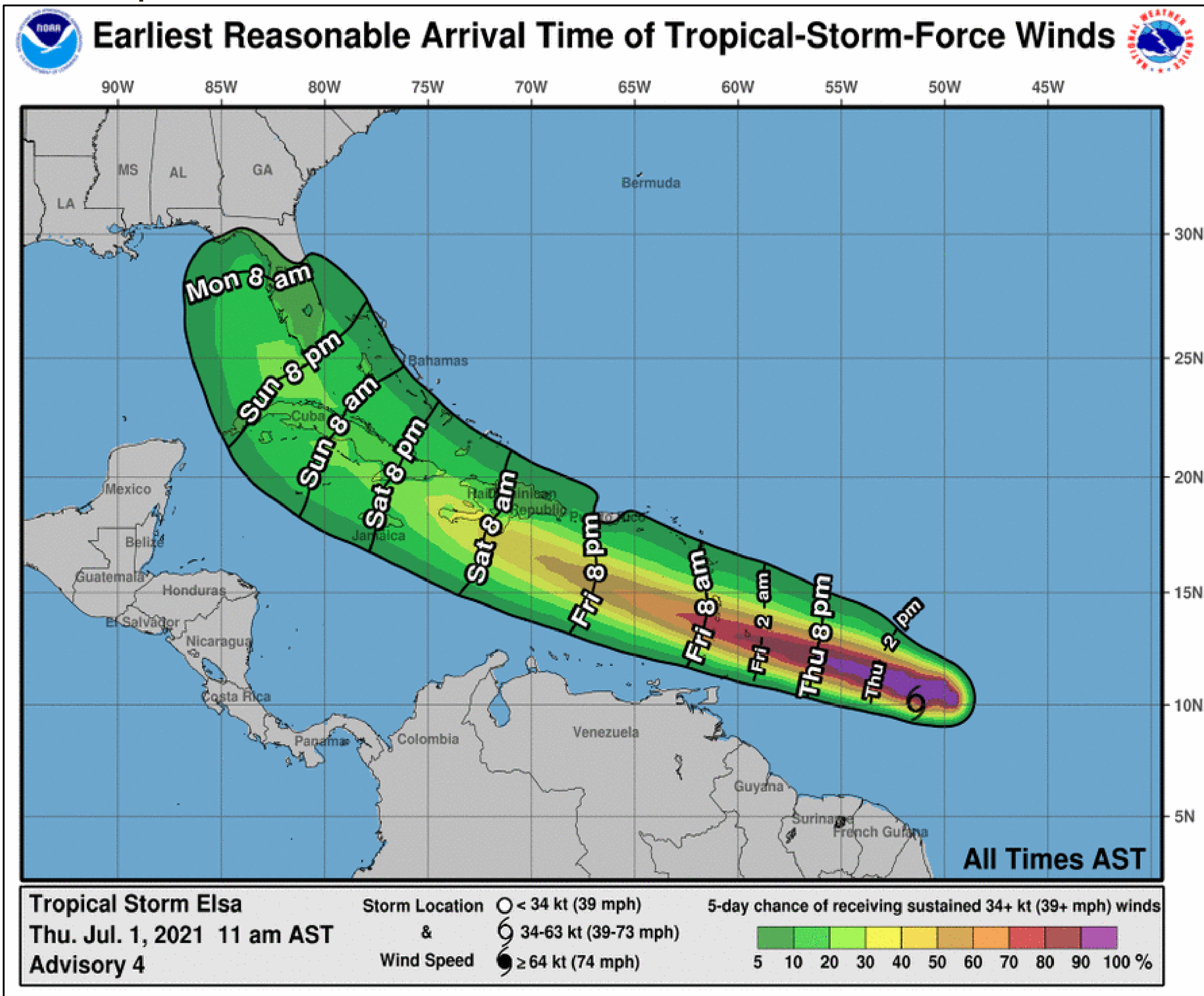


- AGUADILLA PR 10%
- SAINT CROIX 10%
  
- W PALM BEACH 10%
- FT LAUDERDALE 10%
- MIAMI FL 10%
- HOMESTEAD ARB 10%
- MARATHON FL 25%
- KEY WEST FL 25%
- NAPLES FL 20%
- FT MYERS FL 10%
- VENICE FL 15%
- TAMPA FL 10%

- Probabilities of sustained tropical storm force winds (34 kt to 63 kt) over the next 5 days, based off this cyclone's wind radii and track.
- Clear or dark green are the lowest chances of 0-30%.
- Yellow to orange is 31-70%
- Red through purple are the highest probabilities of 71%-100%
- See the color bar below the image for more details.



## Tropical Storm Elsa



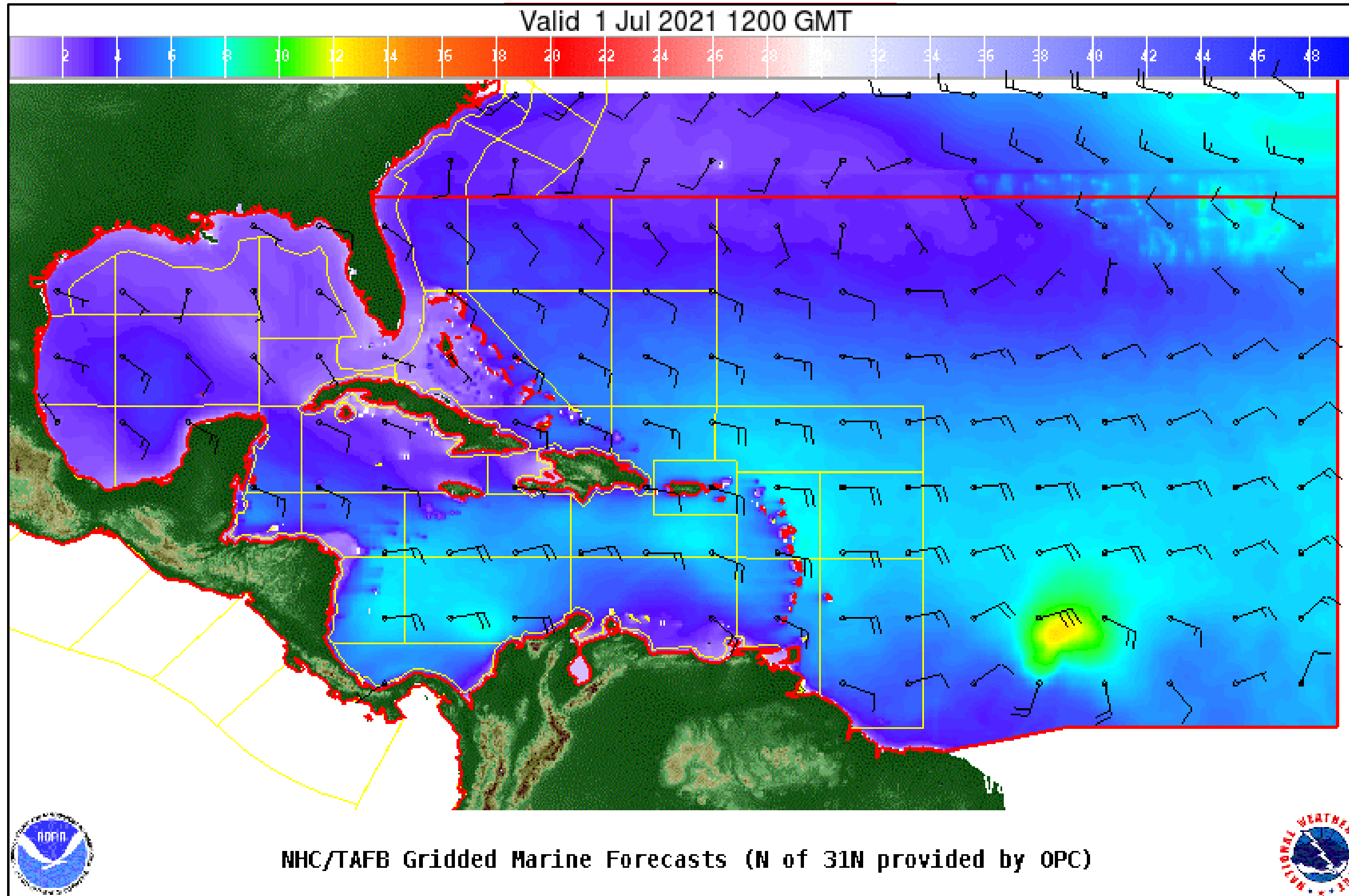
- Puerto Rico/USVI: Fri evening
- South Florida: Sun evening
  
- The earliest reasonable time of arrival of Tropical Storm Force Winds (34kt to 63 kt) for this cyclone based off the current track and wind radii.
  
- Clear or dark green are the lowest chances of 0-30%.
  
- Yellow to orange is 31-70%
  
- Red through purple are the highest probabilities of 71%-100%
  
- See the color bar below the image for more details.

# Wind And Waves

Tropical Storm Elsa



Tropical Analysis and Forecast Branch  
NWS National Hurricane Center



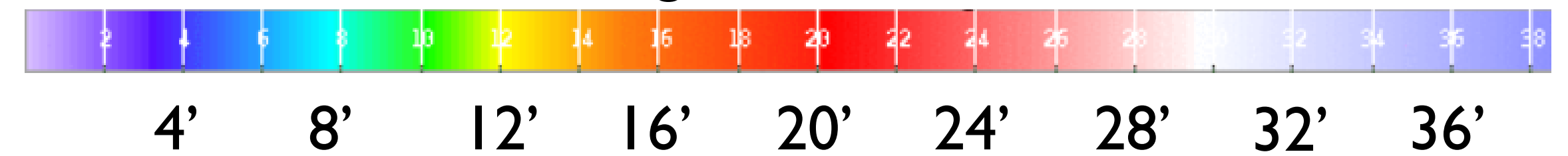
## Current Conditions

2pm EDT, Thursday, July 1

Peak Winds: 40 kt

Peak Seas: 16 ft

■ Wave heights are in feet

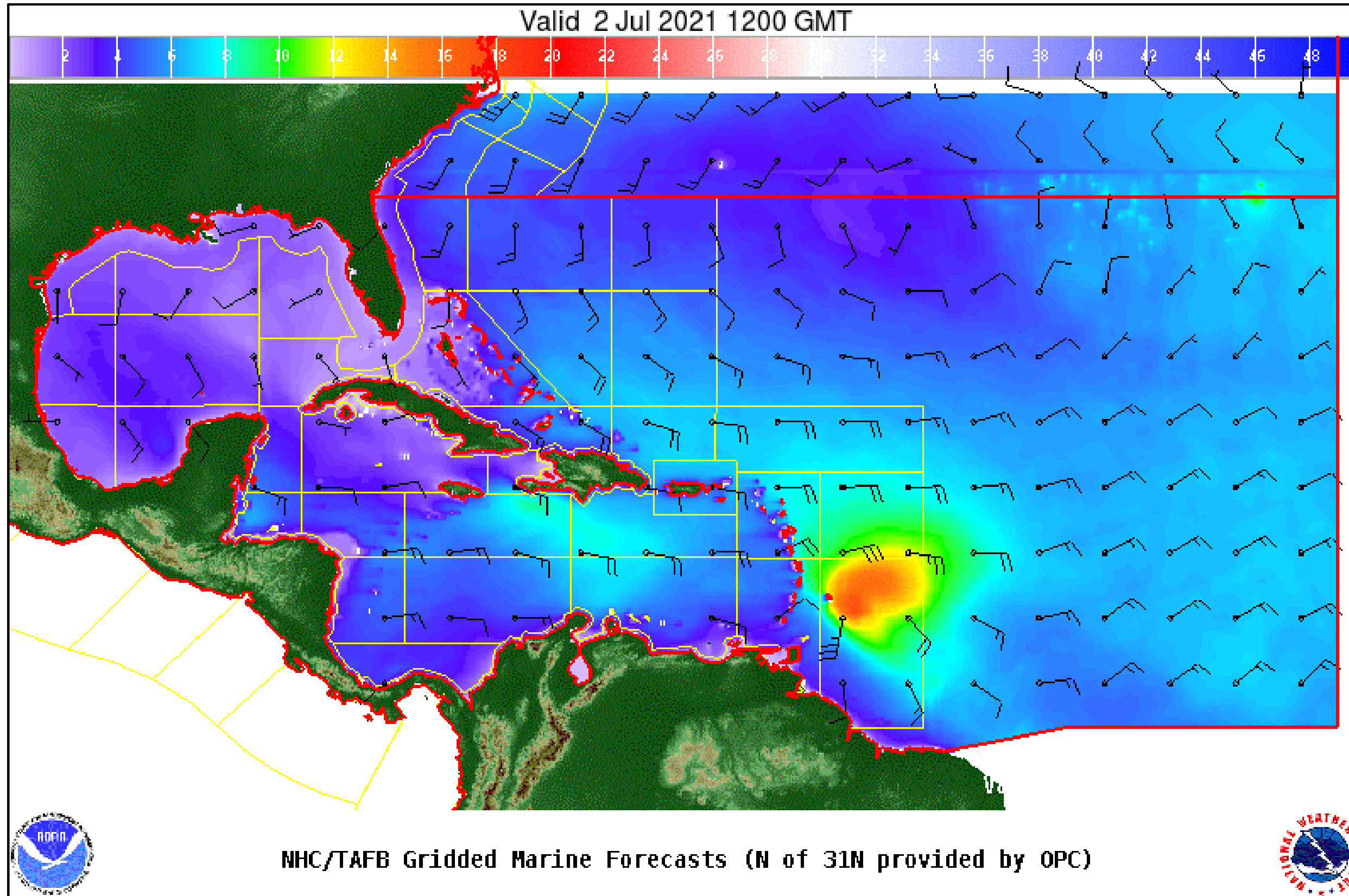


# Wind And Waves

Tropical Storm Elsa

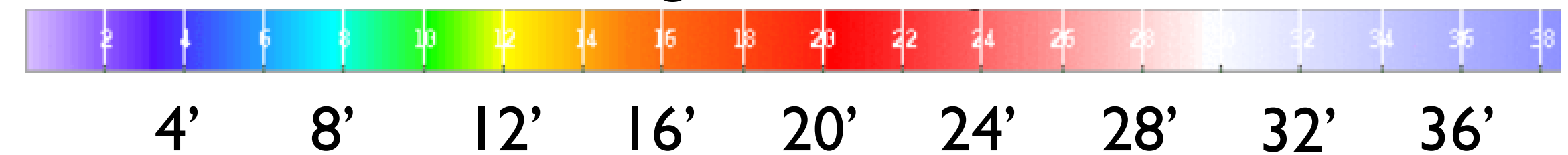


Tropical Analysis and Forecast Branch  
NWS National Hurricane Center



24 Hour Forecast  
**2pm EDT, Friday, July 2**  
Peak Winds: 45 kt  
Peak Seas: 20 ft

■ Wave heights are in feet



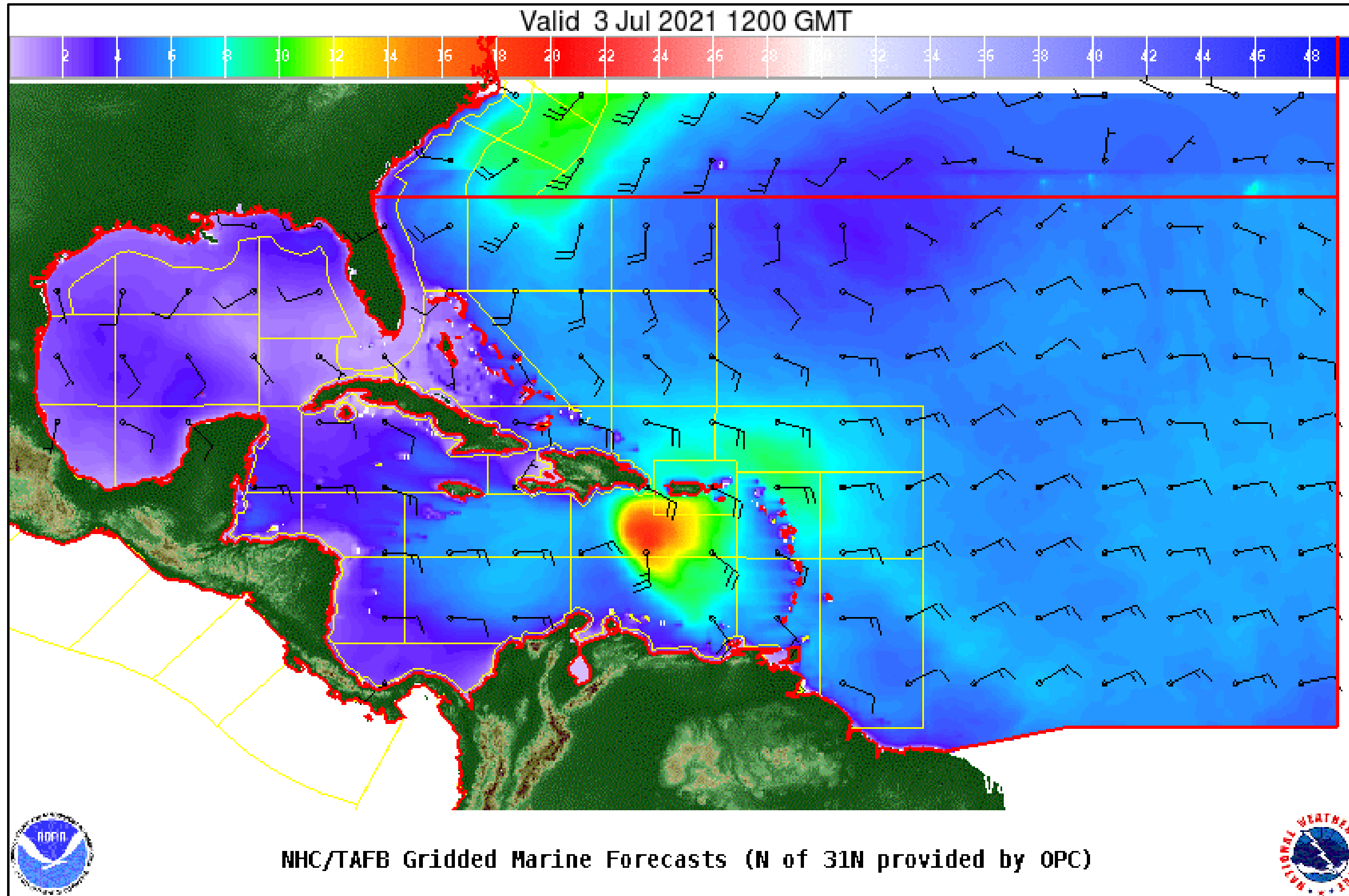


# Wind And Waves

Tropical Storm Elsa



Tropical Analysis and Forecast Branch  
NWS National Hurricane Center



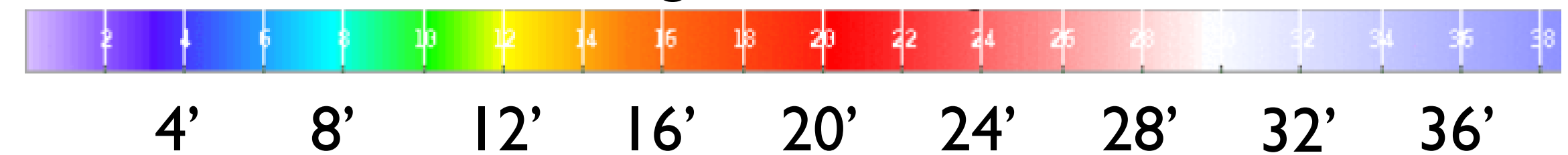
48 Hour Forecast

2pm EDT, Saturday, July 3

Peak Winds: 50 kt

Peak Seas: 22 ft

■ Wave heights are in feet

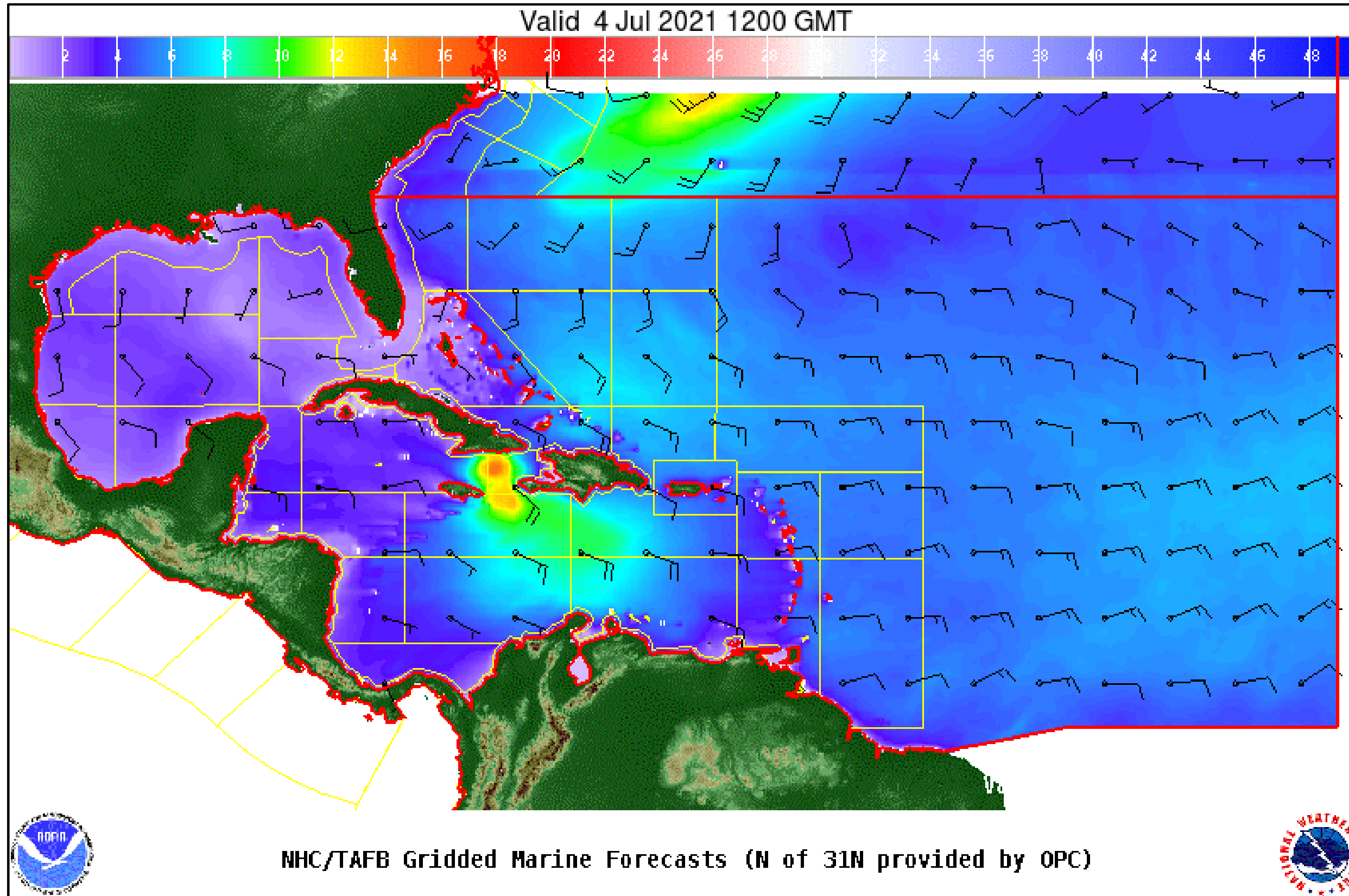


# Wind And Waves

Tropical Storm Elsa



Tropical Analysis and Forecast Branch  
NWS National Hurricane Center



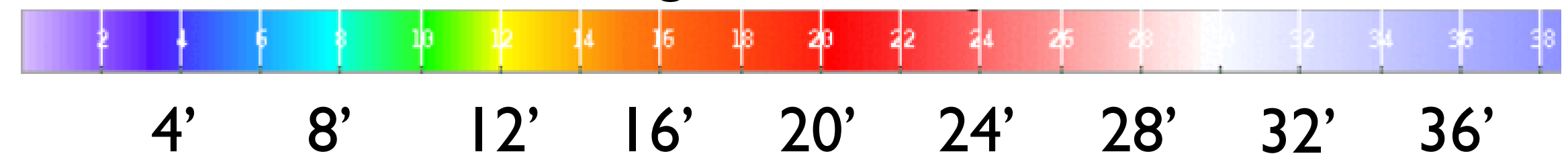
72 Hour Forecast

2pm EDT, Sunday, July 4

Peak Winds: 45 kt

Peak Seas: 15 ft

■ Wave heights are in feet

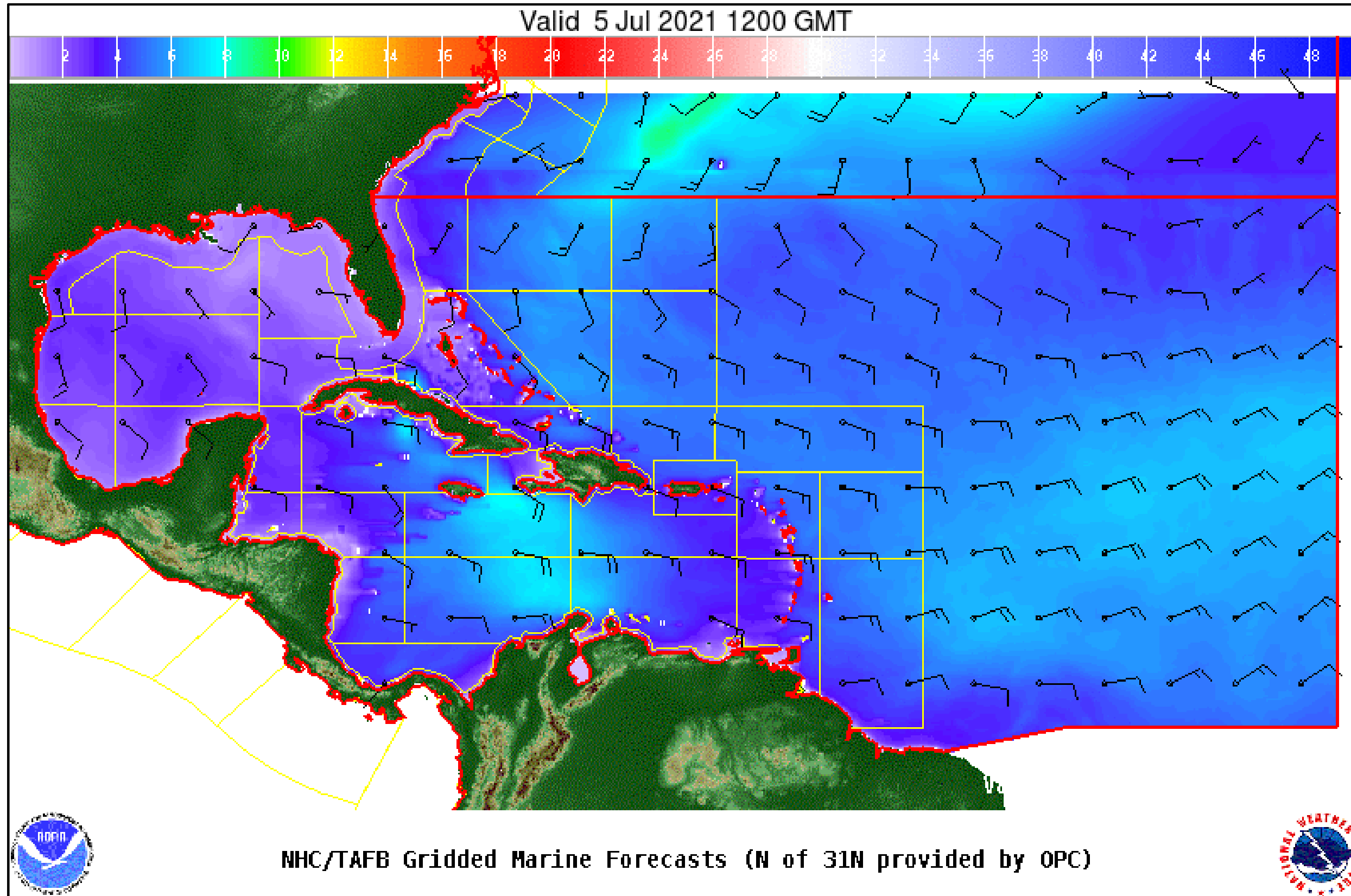


# Wind And Waves

Tropical Storm Elsa

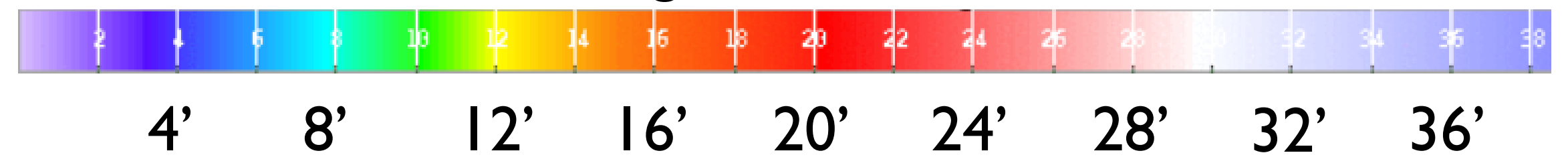


Tropical Analysis and Forecast Branch  
NWS National Hurricane Center



96 Hour Forecast  
2pm EDT, Monday, July 5  
Peak Winds: 50 ft  
Peak Seas: 10 ft

■ Wave heights are in feet



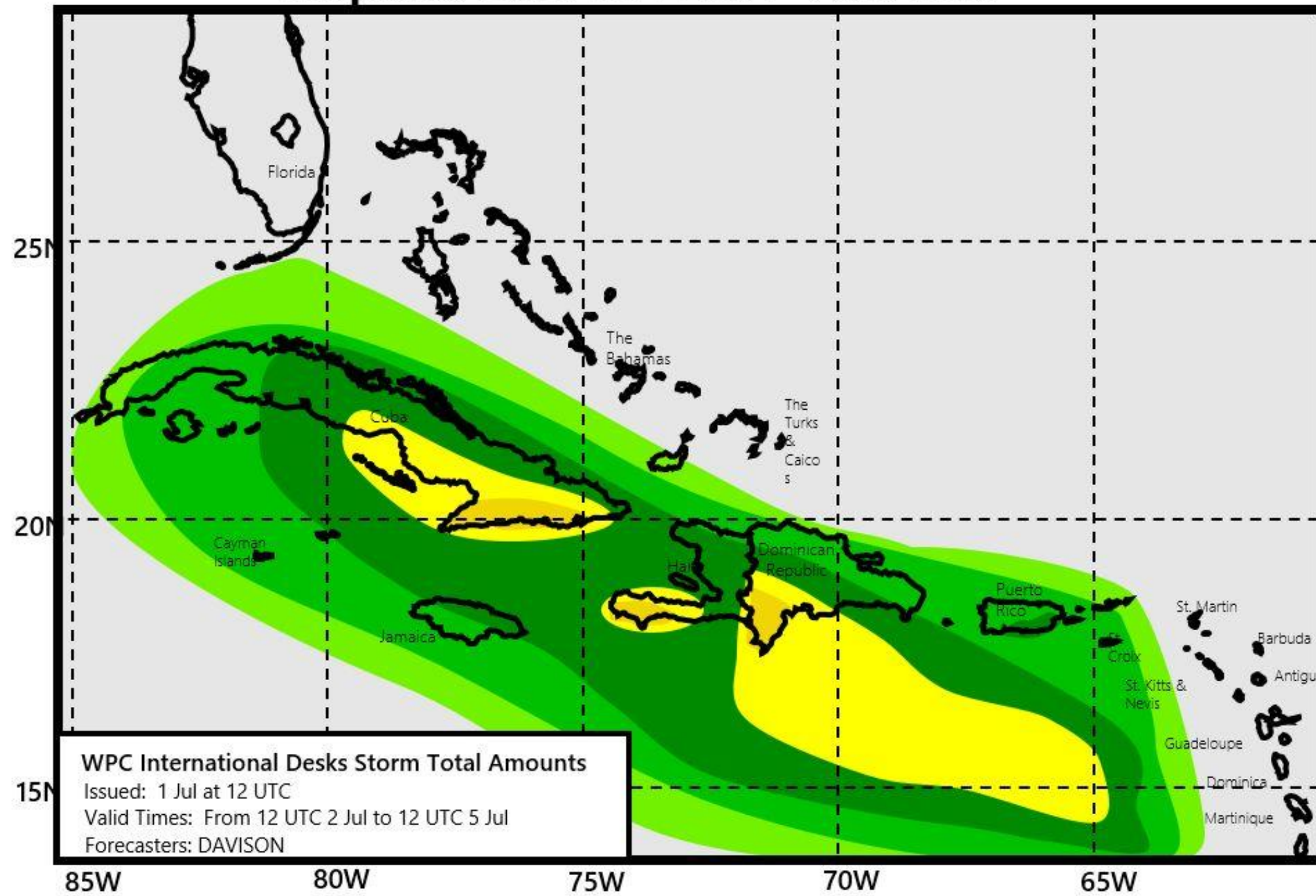
# Expected Storm Total Rainfall and Chance of Rainfall Flooding



Tropical Analysis and Forecast Branch  
NWS National Hurricane Center

Tropical Storm ELSA  
Images from NWS Weather Prediction Center

## Tropical Storm ELSA Rainfall

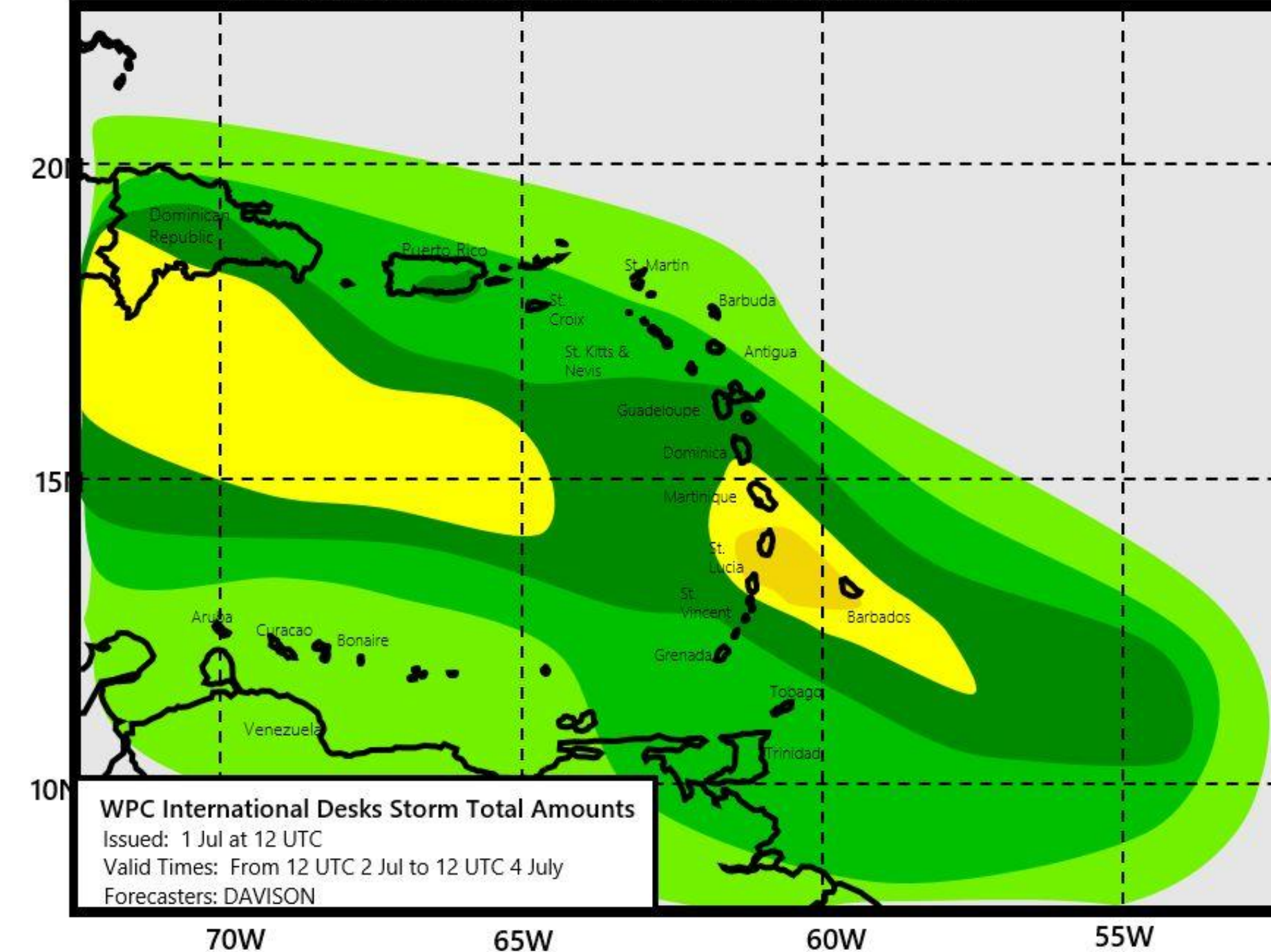


Rainfall (in)	Rainfall (mm)
30+	750+
25-30	625-750
20-25	500-625
15-20	375-500
10-15	250-375
8-12	200-300
6-10	150-250
3-6	75-150
2-3	50-75
1-2	25-50

**NOTE**  
This forecast is for planning purposes. A detailed official forecast will be issued by the respective National Hydro Meteorological Service.

WPC International Desks Storm Total Amounts  
Issued: 1 Jul at 12 UTC  
Valid Times: From 12 UTC 2 Jul to 12 UTC 5 Jul  
Forecasters: DAVISON

## Tropical Storm ELSA Rainfall



Rainfall (in)	Rainfall (mm)
30+	750+
25-30	625-750
20-25	500-625
15-20	375-500
10-15	250-375
8-12	200-300
6-10	150-250
3-6	75-150
2-3	50-75
1-2	25-50

**NOTE**  
This forecast is for planning purposes. A detailed official forecast will be issued by the respective National Hydro Meteorological Service.

WPC International Desks Storm Total Amounts  
Issued: 1 Jul at 12 UTC  
Valid Times: From 12 UTC 2 Jul to 12 UTC 4 July  
Forecasters: DAVISON

# Key Messages


## Tropical Storm Elsa



Tropical Analysis and Forecast Branch  
NWS National Hurricane Center

**Key Messages for Tropical Storm Elsa**  
Advisory 4: 11:00 AM AST Thu Jul 01, 2021

1. Tropical storm conditions are expected beginning early Friday in portions of the Windward and southern Leeward Islands.
2. Heavy rainfall from Elsa will move quickly across the Windward and southern Leeward Islands, including Barbados, on Friday, with outer rain bands impacting Puerto Rico Friday into Saturday. Isolated flash flooding and mudslides are possible.
3. There is a risk of wind and rainfall impacts in portions of Hispaniola, Cuba, the Turks and Caicos and the Bahamas through early next week. Interests in these areas should monitor Elsa's progress and updates to the forecast.
4. There is a risk of storm surge, wind, and rainfall impacts in the Florida Keys and portions of the southern Florida Peninsula early next week. However, the forecast uncertainty remains larger than usual due to Elsa's potential interaction with the Greater Antilles this weekend. Interests in Florida should monitor Elsa's progress and updates to the forecast.



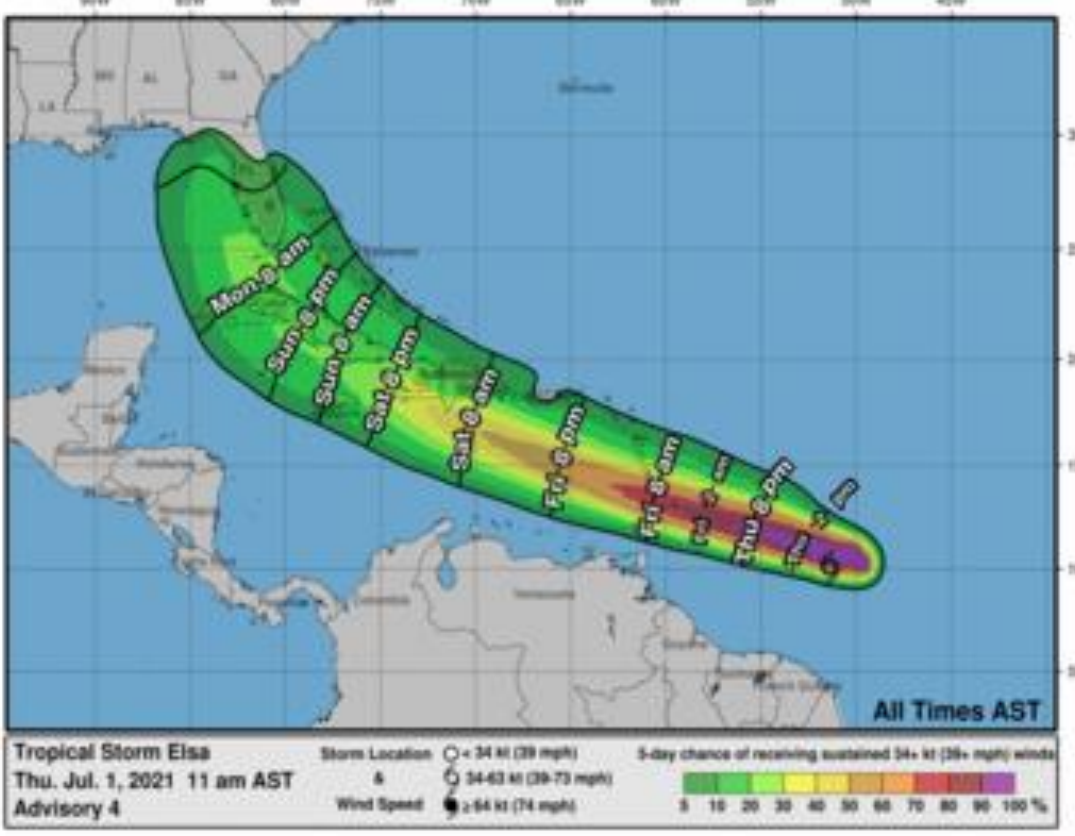
**Tropical Storm Elsa**  
Thursday July 01, 2021  
11 AM AST Advisory 4  
NWS National Hurricane Center

**Current information: x**  
Center location 10.1 N 51.4 W  
Maximum sustained wind 45 mph  
Movement W at 28 mph

**Forecast positions:**  
● Tropical Cyclone ○ Post-Potential TC  
Sustained winds: D < 39 mph  
S 39-73 mph H 74-110 mph M > 110 mph

**Potential track area:** Day 1-3 Day 4-5  
**Watches:** Hurricane Tropical Storm  
**Warnings:** Hurricane Tropical Storm  
**Current wind extent:** Hurricane Tropical Storm

**Most Likely Arrival Time of Tropical-Storm-Force Winds**



**Tropical Storm Elsa**  
Thu. Jul. 1, 2021 11 am AST  
Advisory 4

Storm Location ○ = 34 kt (39 mph) ○ = 34-43 kt (39-73 mph) ○ = 44 kt (74 mph)  
Wind Speed ● = 44 kt (74 mph)

5-day chance of receiving sustained 34+ kt (39+ mph) winds: 0 10 20 30 40 50 60 70 80 90 100 %

All Times AST

For more information go to [hurricanes.gov](http://hurricanes.gov)

- **Marine Key Messages:**
- Seas will build to 20 ft by Fri as Elsa reaches the Windward Islands
- Seas reset in the Caribbean, reaching 22 ft by Saturday near the Mona Passage

**IMPACTS FOR D7 (through next 5 days)**

**Winds – Low**

**Storm Surge – Low**

**Rainfall/Flash Flooding – Moderate**

**Tornadoes – None**

**Waves - Moderate**



# TROPICAL STORM ELSA BRIEFING

You can contact the Tropical Analysis and Forecast Branch at  
305-229-4424

*The Next Briefing Will Be:  
Friday, 8:00 AM EDT*

*You can always find get the latest graphics and information for this storm at [www.hurricanes.gov](http://www.hurricanes.gov)*



NHC\_TAFB

[www.nhc.noaa.gov](http://www.nhc.noaa.gov)