

IMPACTS FOR D7 (through next 5 days)

Winds – Moderate

Storm Surge – Low

Rainfall/Flash Flooding – Moderate

Tornadoes – None

Waves - Low

TROPICAL DEPRESSION FRED BRIEFING



9:00 AM EDT

Thursday, August 12, 2021

Prepared by:

Dr. Nelsie Ramos

*Tropical Analysis and Forecast Branch
NWS National Hurricane Center*

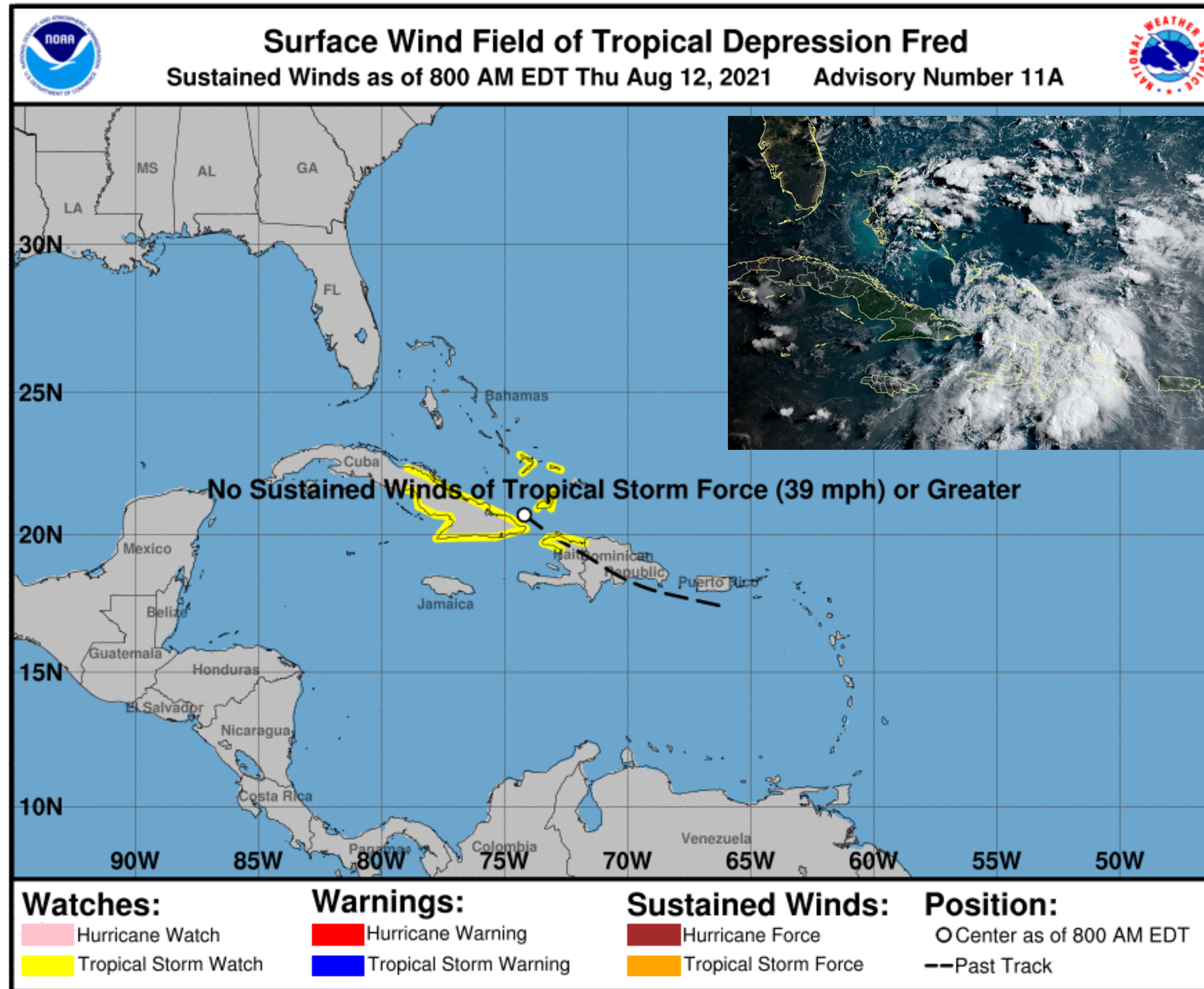


Situation Overview

Tropical Depression Fred



Tropical Analysis and Forecast Branch
NWS National Hurricane Center



...Disorganized Fred moving between E Cuba and the SE Bahamas...

SUMMARY OF 800 AM EDT...INFORMATION

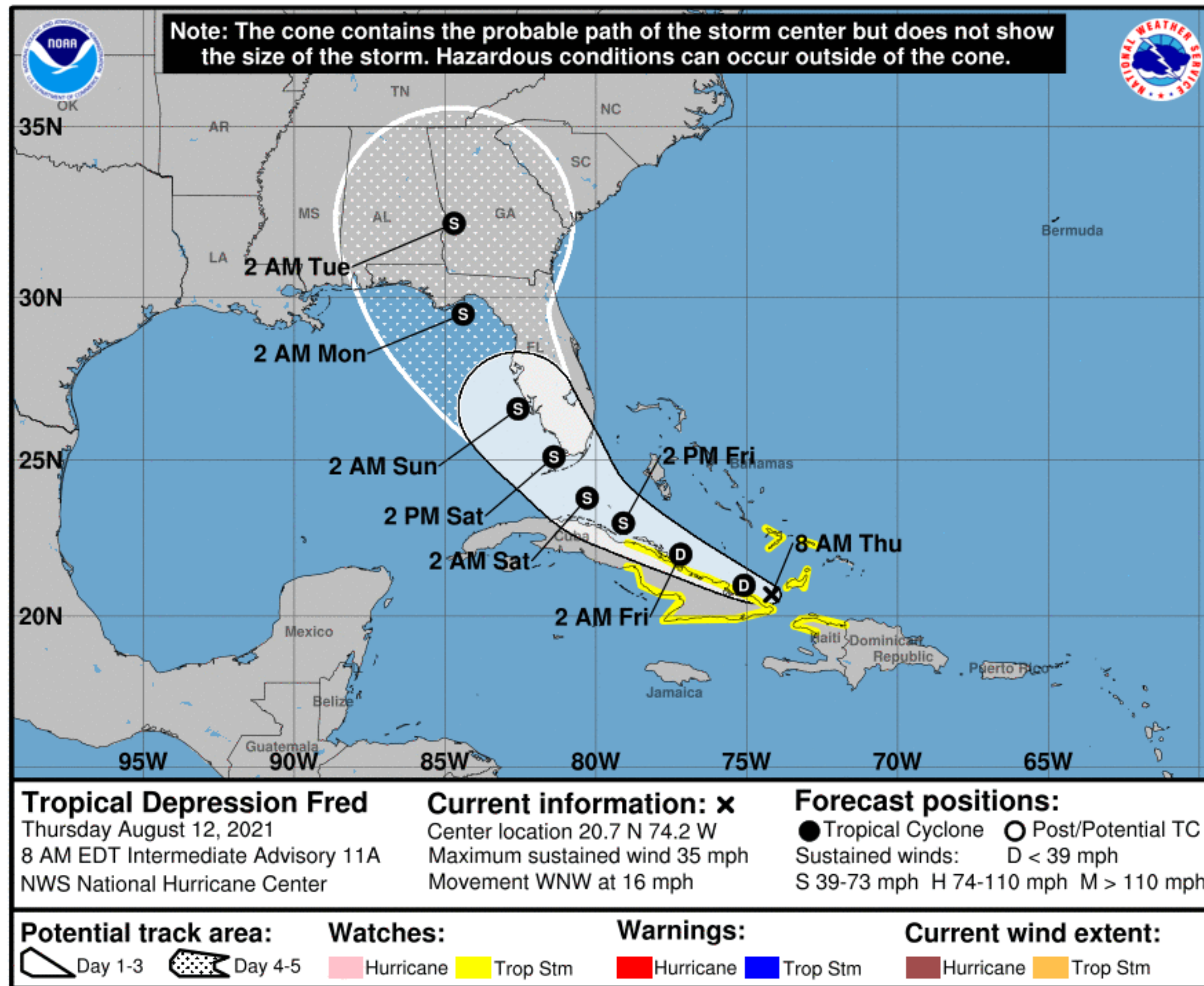
LOCATION...20.7N 74.2W
ABOUT 80 MI...175 KM NE OF
GUANTANAMO CUBA
MAXIMUM SUSTAINED WINDS...35 MPH...55
KM/H
PRESENT MOVEMENT...WNW OR 300
DEGREES AT 16 MPH...26 KM/H
PEAK SEAS 8 FT

Forecast Information

Tropical Depression Fred



Tropical Analysis and Forecast Branch
NWS National Hurricane Center



- Fred is forecast to move WNW then turn towards the NW on Saturday
- Fred is expected to be a low end tropical storm for South Florida on Saturday
- Tropical Storm force winds are also expected for the NE Gulf and Florida Panhandle on Sunday or Monday (hurricane can not be ruled out at this point)
- Current center forecast positions through the next 5 days (if applicable) illustrated by dots
- White swath of potential track error added to each side of the forecast track through day 3
- Hatched swath of potential track error added to each side of the forecast track days 4-5

** Swaths are calculated using average track errors and actual track may be well inside, or possibly outside the potential track areas indicated.

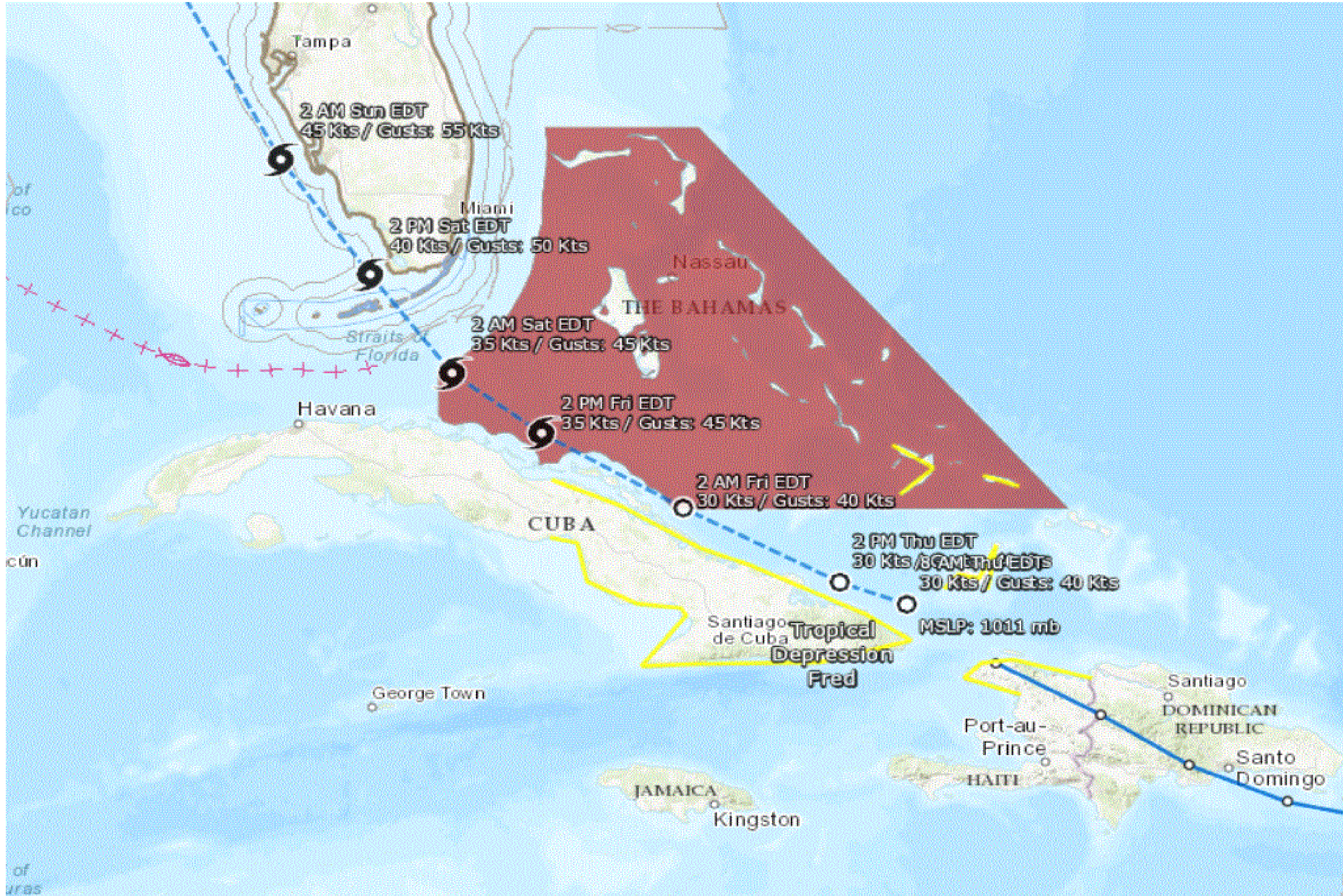
NOTE: Do not focus on the exact track. Impacts can occur well outside the area enclosed by the cone.

Hazards Map

Tropical Depression Fred



Tropical Analysis and Forecast Branch
NWS National Hurricane Center



Tropical Storm Warning

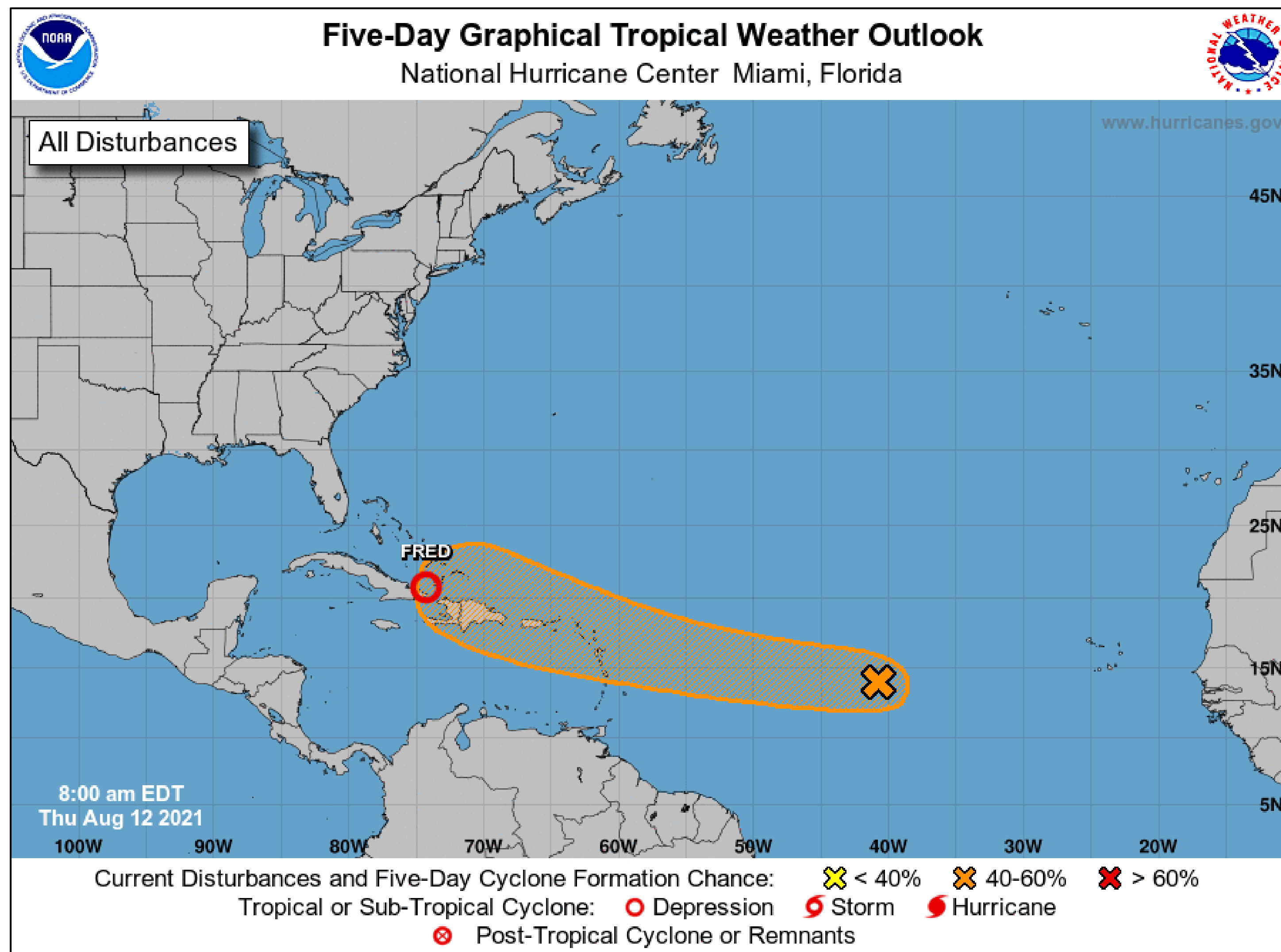
- <https://nowcoast.noaa.gov/>

Tropical Weather Outlook

Tropical Depression Fred



Tropical Analysis and Forecast Branch
NWS National Hurricane Center



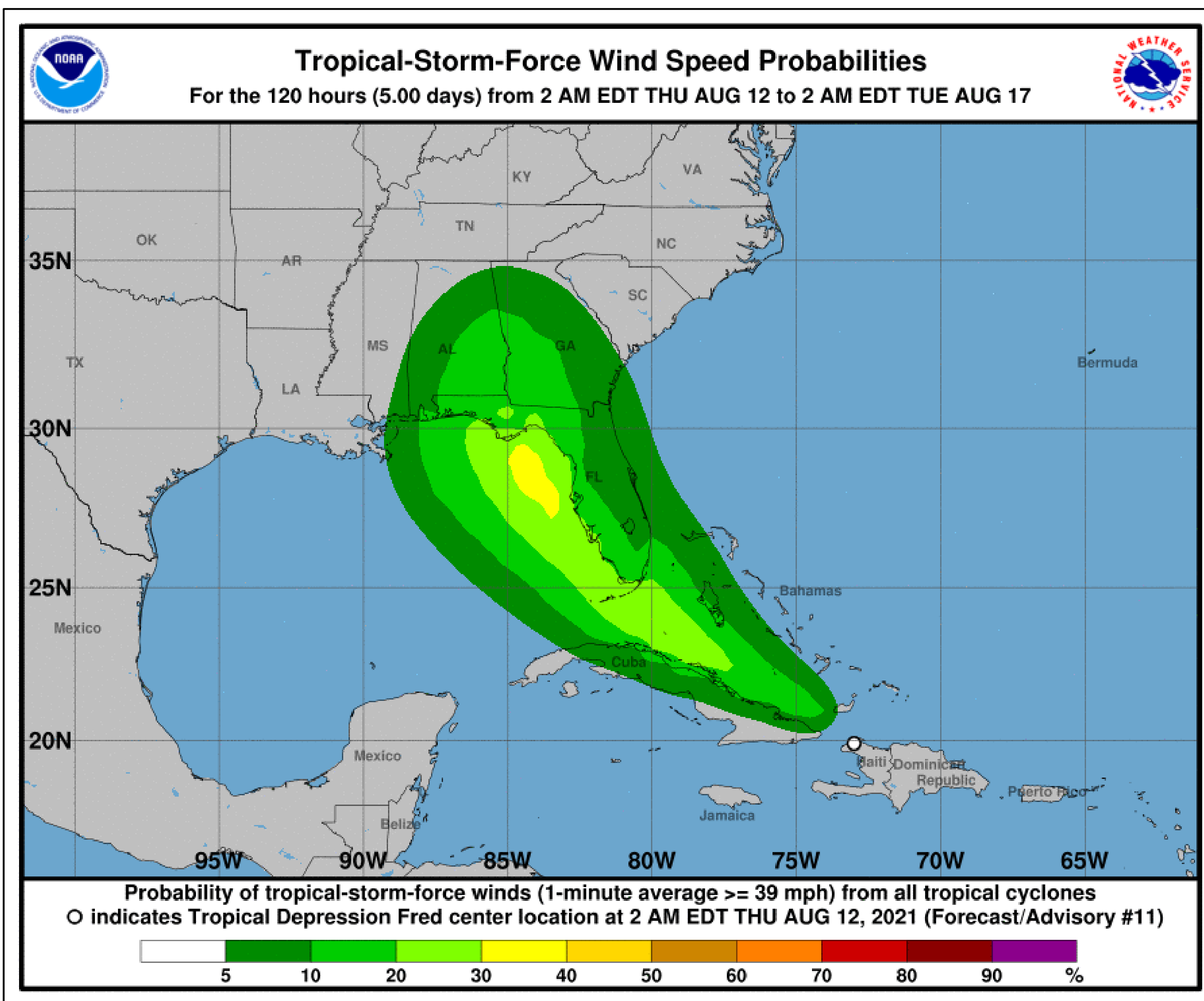
- Showers and thunderstorms remain disorganized in association with a tropical wave located about 1,400 miles east of the Lesser Antilles.
- Environmental conditions are expected to gradually become more conducive for development, and a tropical depression could form by early next week while the system moves generally westward at about 20 mph across the tropical Atlantic.
- This system is expected to reach portions of the Leeward Islands late Saturday or early Sunday.
- Formation chance through 48 hours...low...30 percent.
- Formation chance through 5 days...medium...60 percent.
- **Reminder:** *The hatched area represents a possible development area, not the system's path after development occurs.*

T.S. Wind Speed Probabilities

Tropical Depression Fred



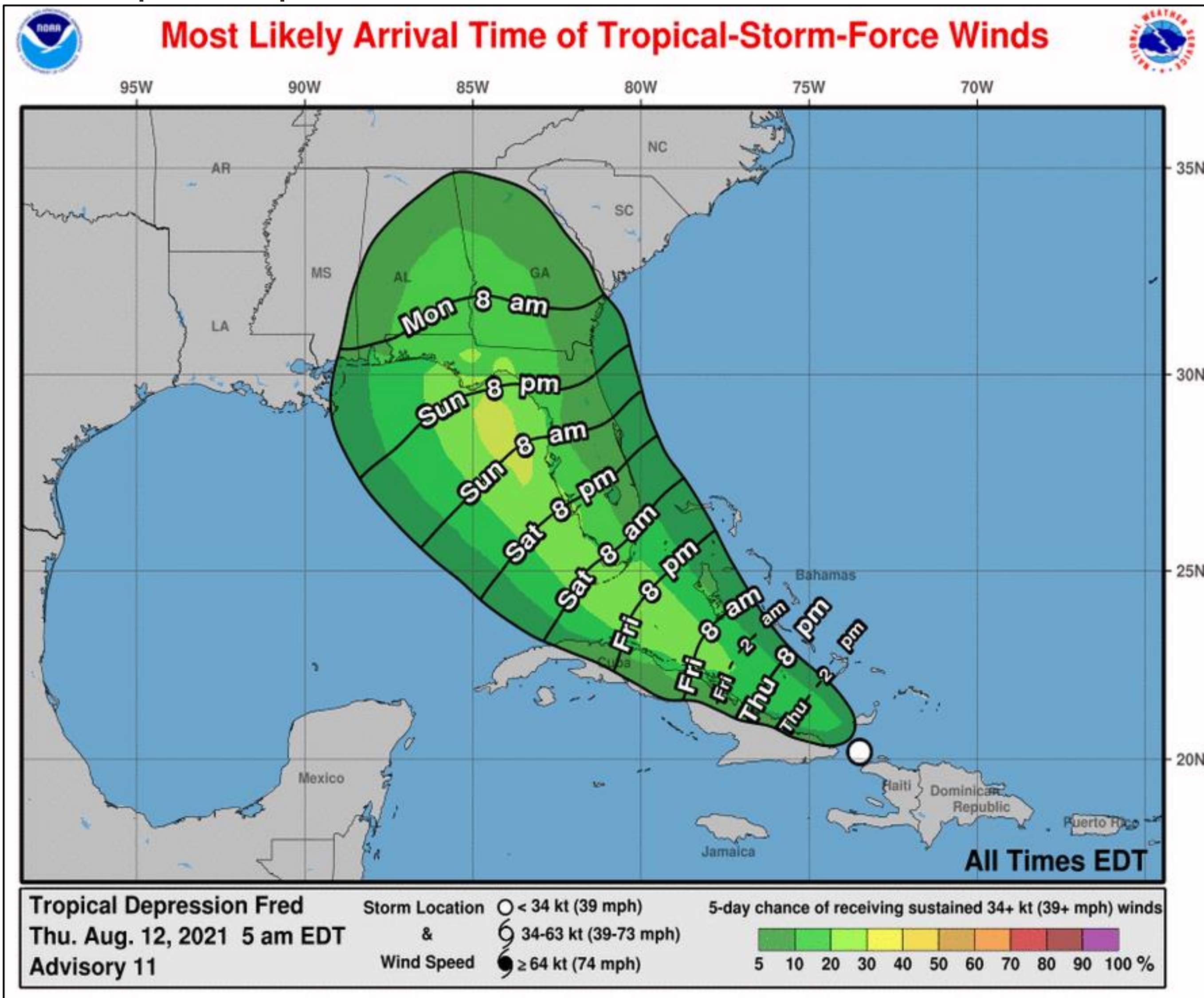
Tropical Analysis and Forecast Branch
NWS National Hurricane Center



- Fort Pierce, FL – 10%
 - Palm Beach, FL – 10%
 - Fort Lauderdale, FL – 15%
 - Miami, FL – 15%
 - Marathon, FL – 25%
 - Key West, FL – 25%
 - Naples, FL – 25%
 - Fort Myers, FL – 15%
 - Venice, FL – 25%
 - Tampa, FL – 25%
 - Cedar Key, FL – 25%
 - Apalachicola, FL – 25%
 - Panama City, FL – 20%
 - Pensacola, FL – 10%
-
- Probabilities of sustained tropical storm force winds (34 kt to 63 kt) over the next 5 days, based off this cyclone's wind radii and track.
 - Clear or dark green are the lowest chances of 0-30%.
 - Yellow to orange is 31-70%
 - Red through purple are the highest probabilities of 71%-100%
 - See the color bar below the image for more details.



Tropical Depression Fred



- SE Florida and Keys – Sat morning
- SW Florida – Sat night
- Florida Panhandle – Sun night

- The most likely time of arrival of Tropical Storm Force Winds (34kt to 63 kt) for this cyclone based off the current track and wind radii.

- Clear or dark green are the lowest chances of 0-30%.

- Yellow to orange is 31-70%

- Red through purple are the highest probabilities of 71%-100%

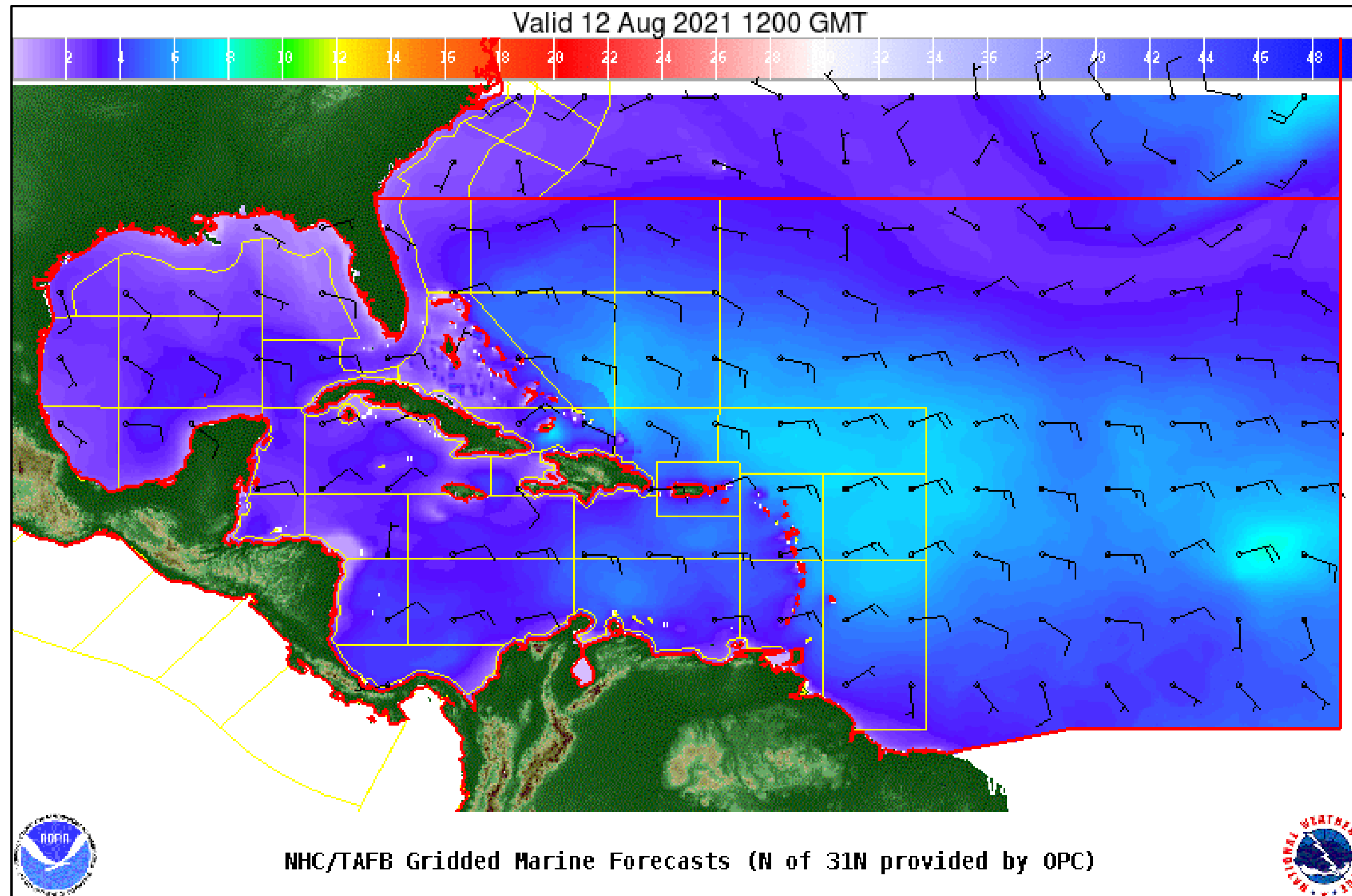
- See the color bar below the image for more details.

Wind And Waves



Tropical Analysis and Forecast Branch
NWS National Hurricane Center

Tropical Depression fred



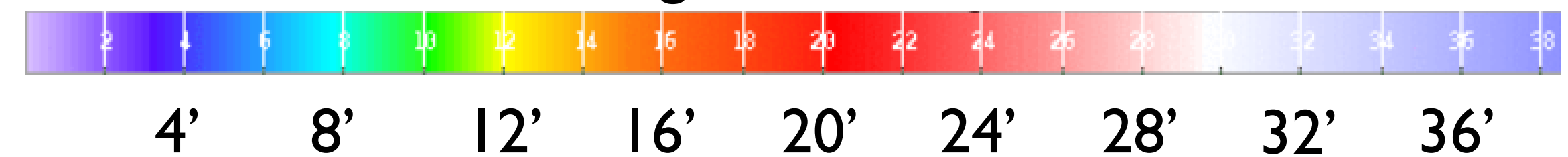
Current Conditions

8 AM EDT Thursday August 12

Peak Winds: 30 kt

Peak Seas: 8 ft

■ Wave heights are in feet

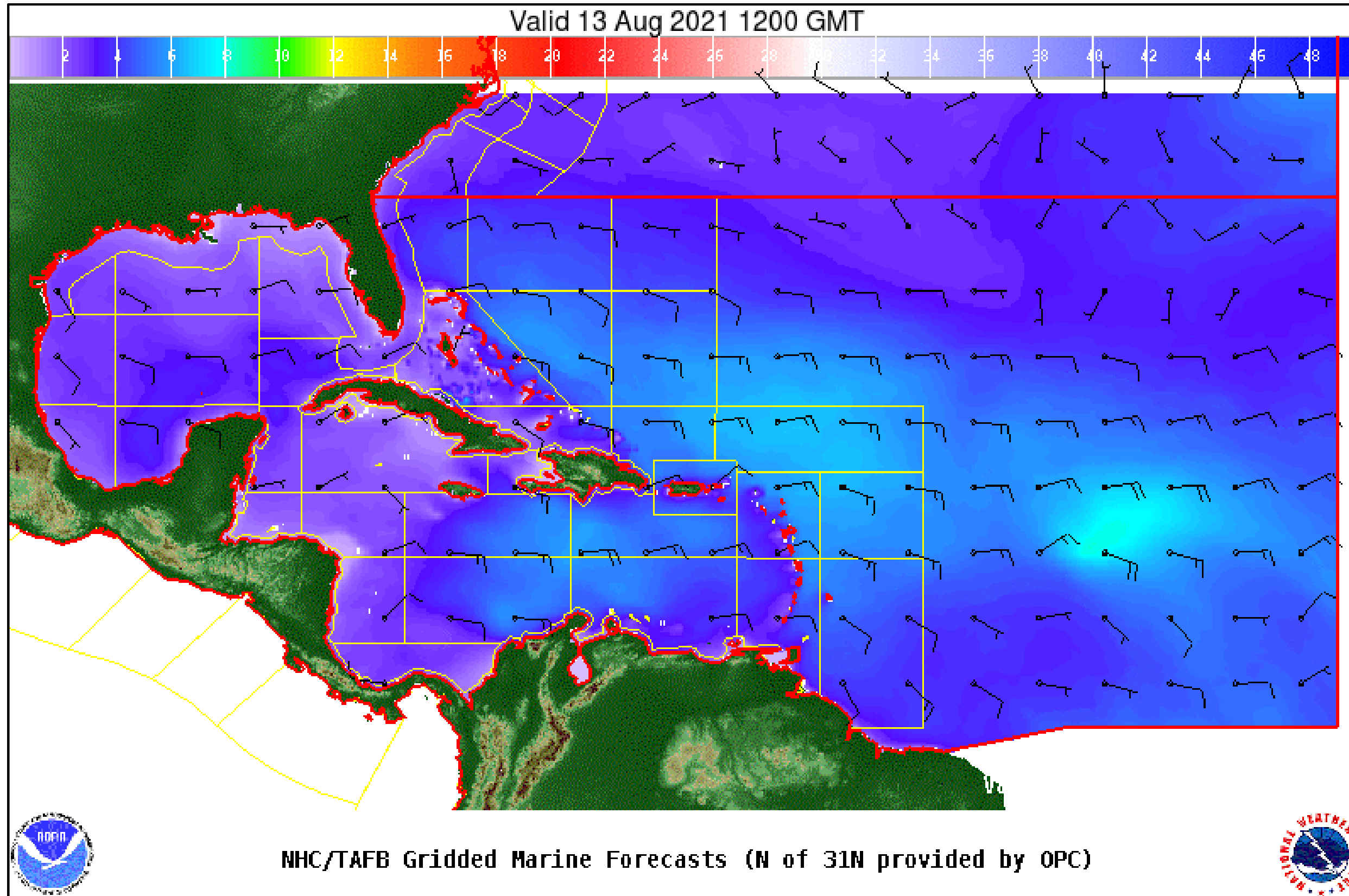


Wind And Waves

Tropical Depression fred



Tropical Analysis and Forecast Branch
NWS National Hurricane Center



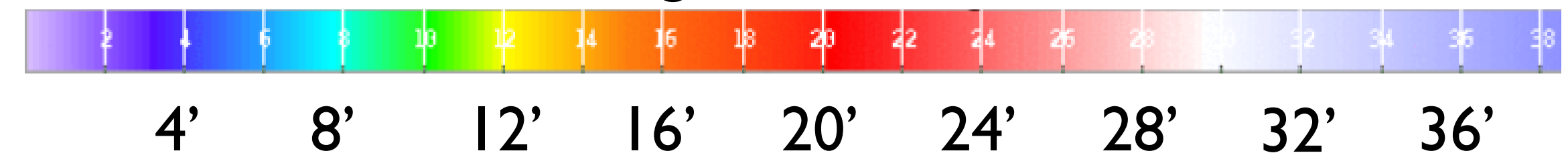
24 Hour Forecast

8 AM EDT Friday August 13

Peak Winds: 30 kt

Peak Seas: 8 ft

■ Wave heights are in feet

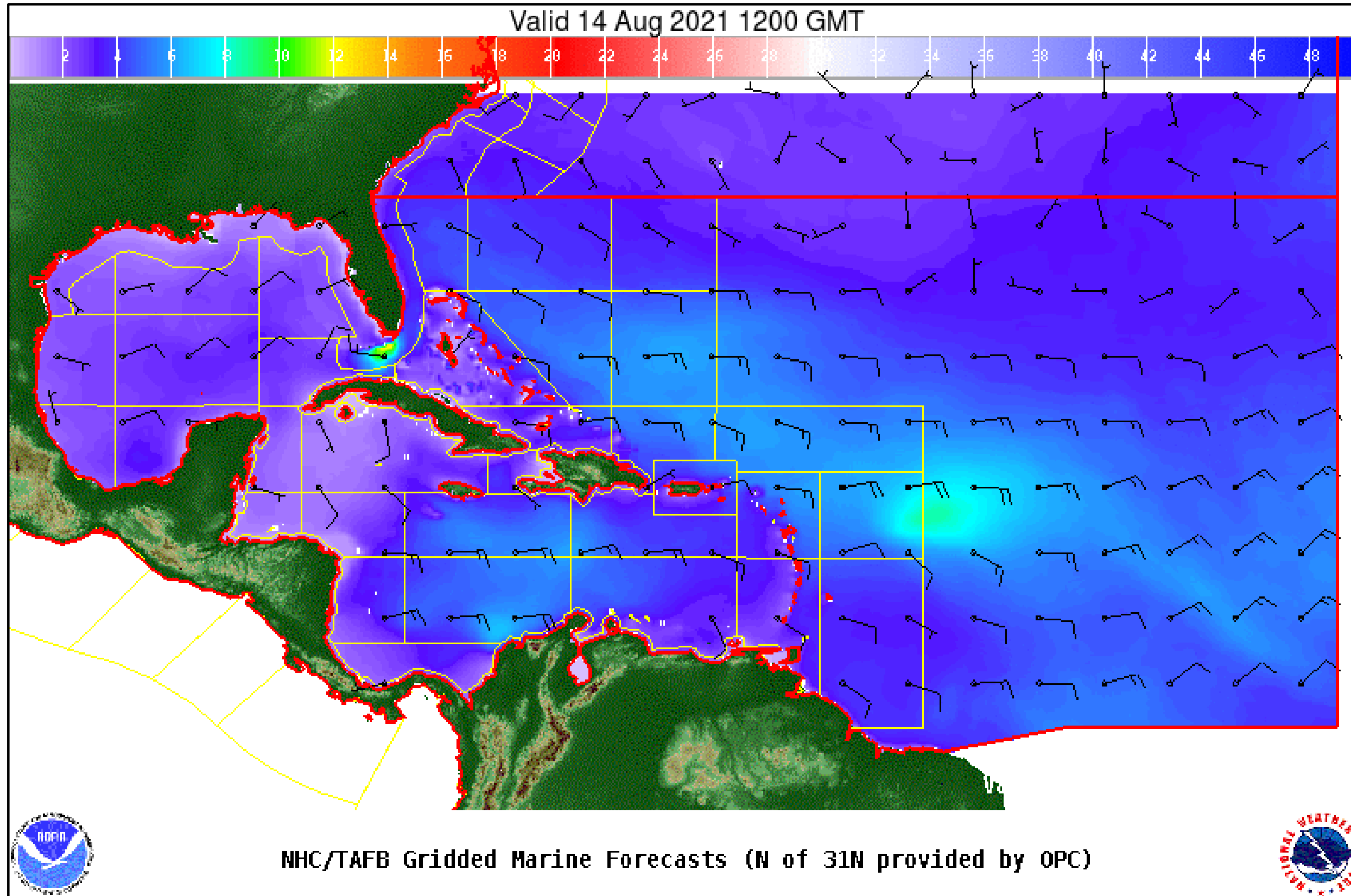


Wind And Waves

Tropical Depression fred



Tropical Analysis and Forecast Branch
NWS National Hurricane Center



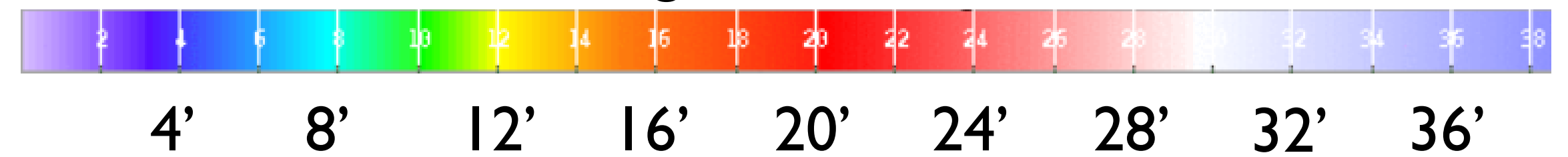
48 Hour Forecast

8 AM EDT Saturday August 14

Peak Winds: 35 kt

Peak Seas: 10 ft

■ Wave heights are in feet

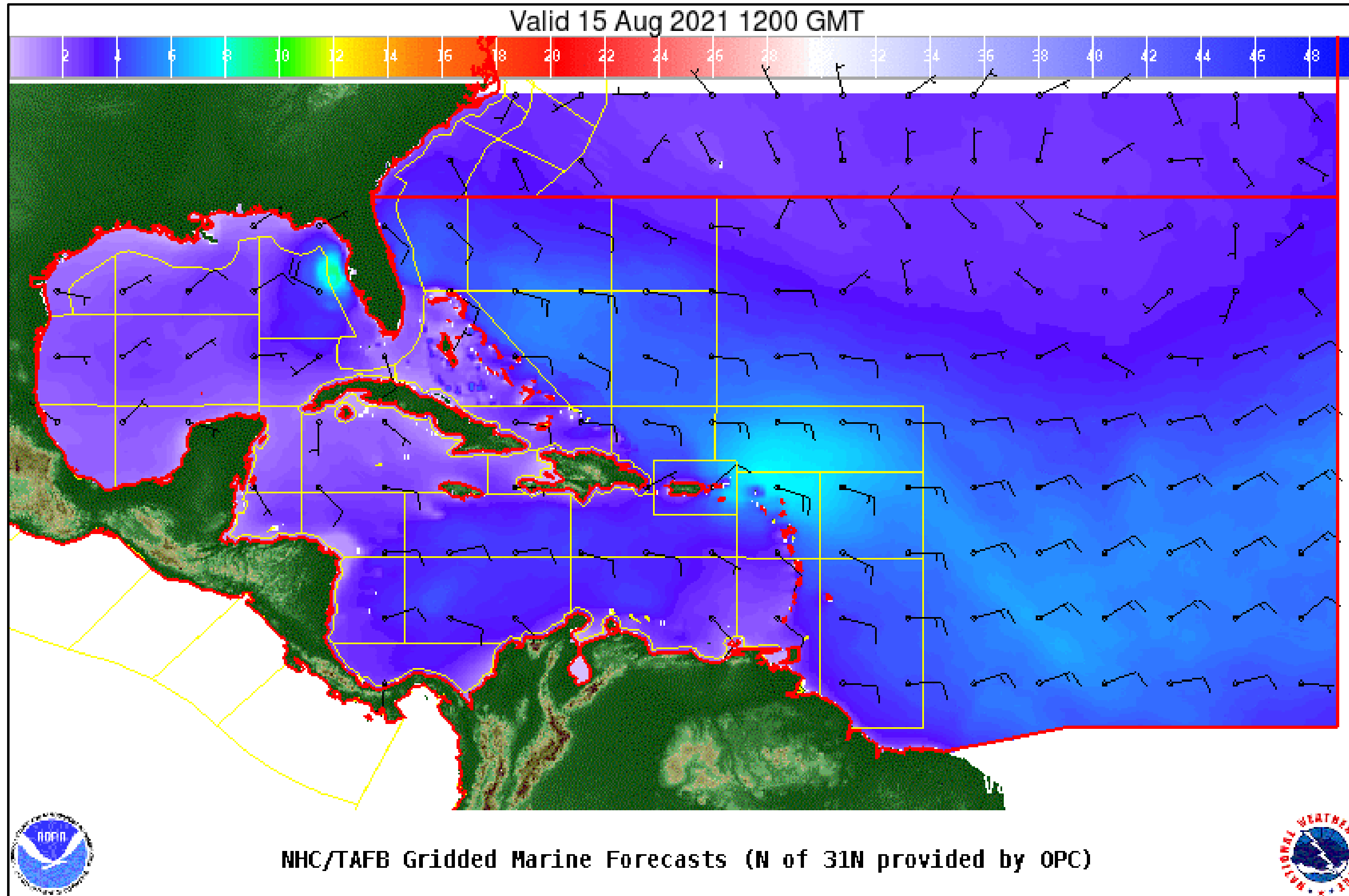


Wind And Waves

Tropical Depression fred



Tropical Analysis and Forecast Branch
NWS National Hurricane Center



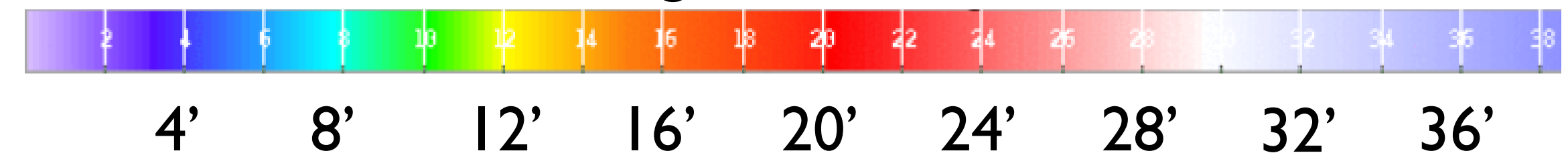
72 Hour Forecast

8 AM EDT Sunday August 15

Peak Winds: 40 kt

Peak Seas: 12 ft

■ Wave heights are in feet

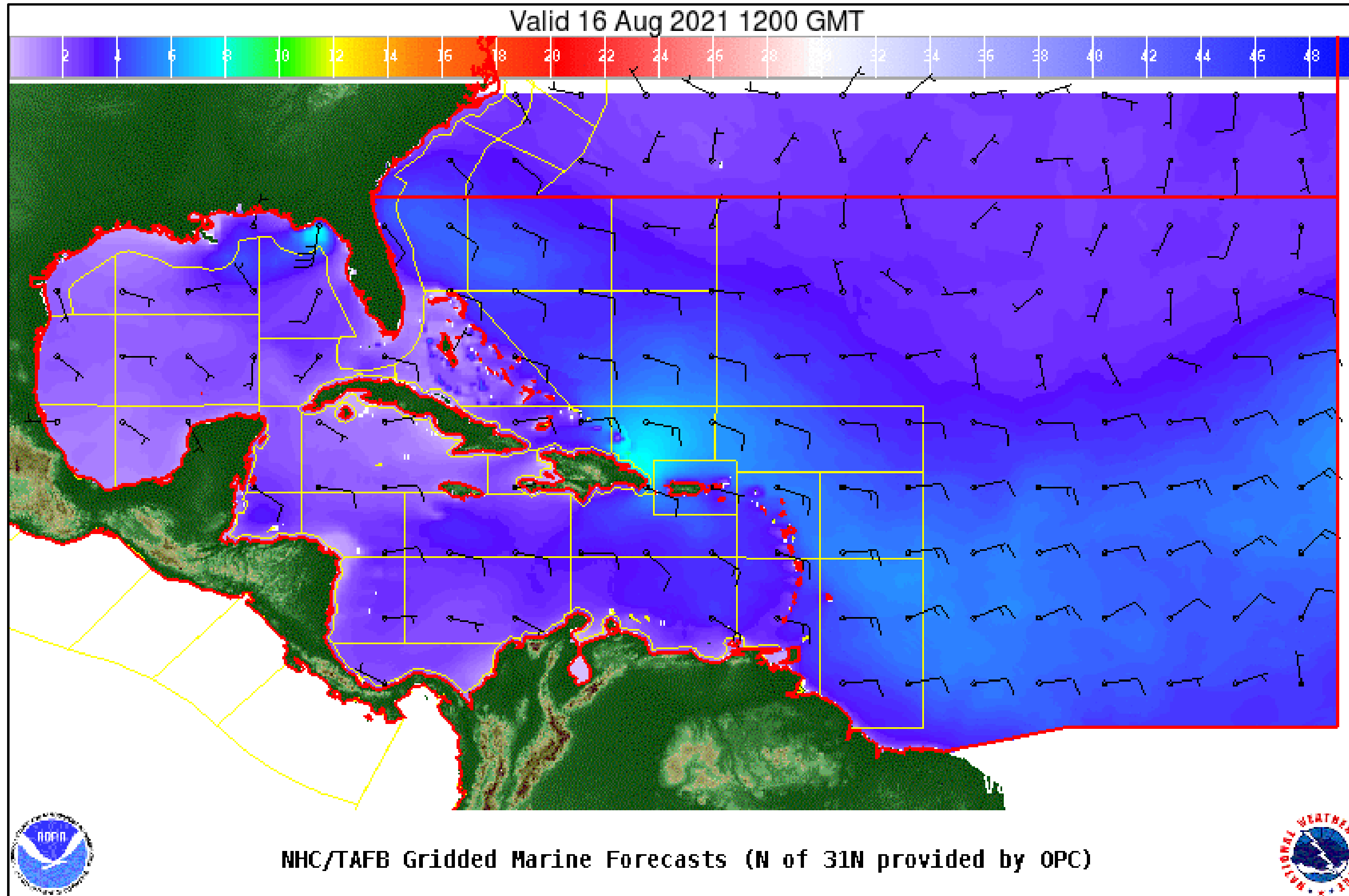


Wind And Waves

Tropical Depression fred



Tropical Analysis and Forecast Branch
NWS National Hurricane Center



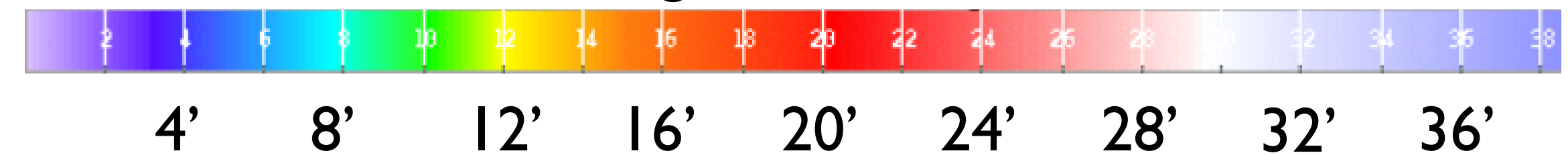
96 Hour Forecast

8 AM EDT Monday August 16

Peak Winds: 50 kt

Peak Seas: 12 ft

■ Wave heights are in feet



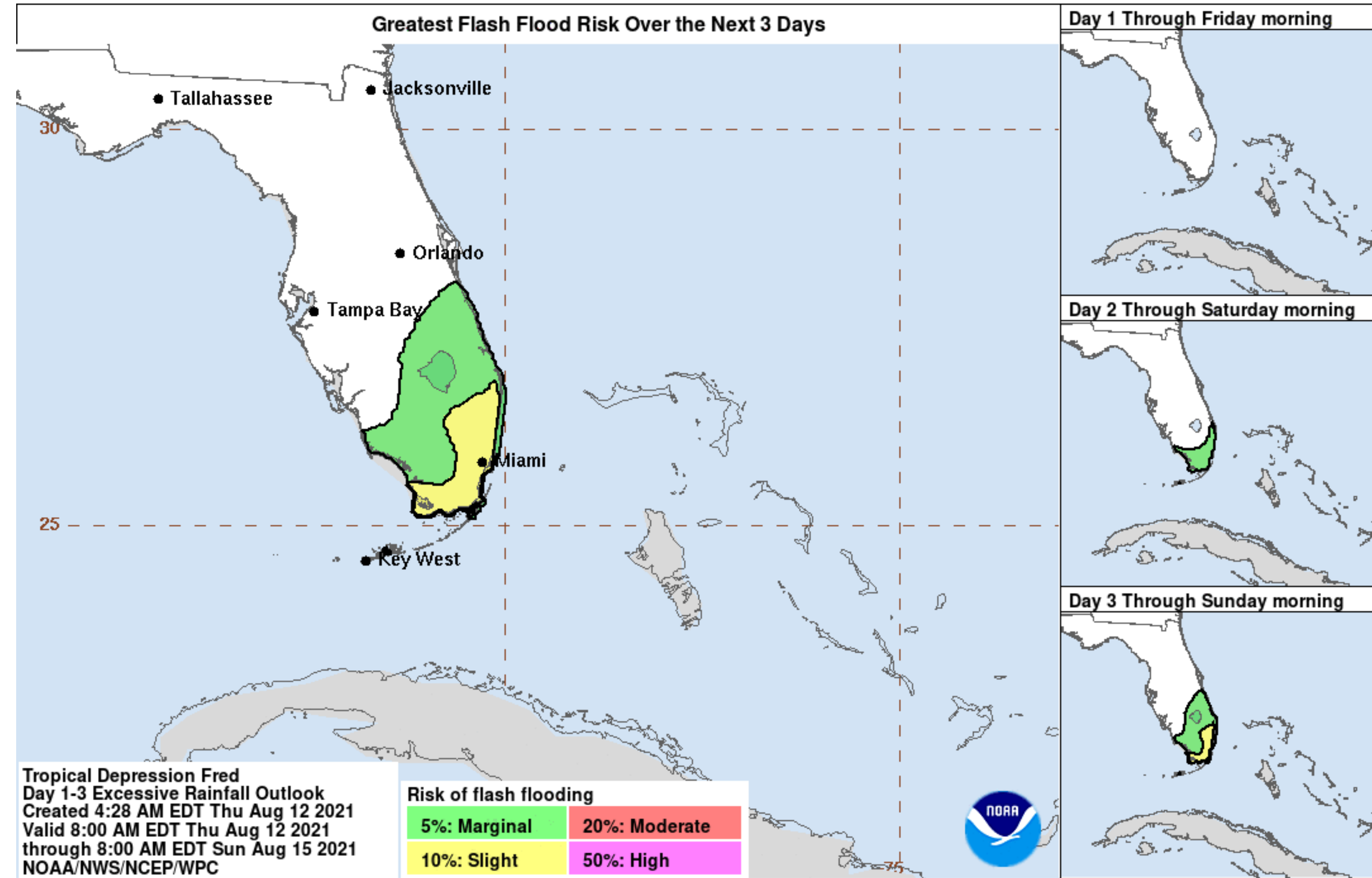
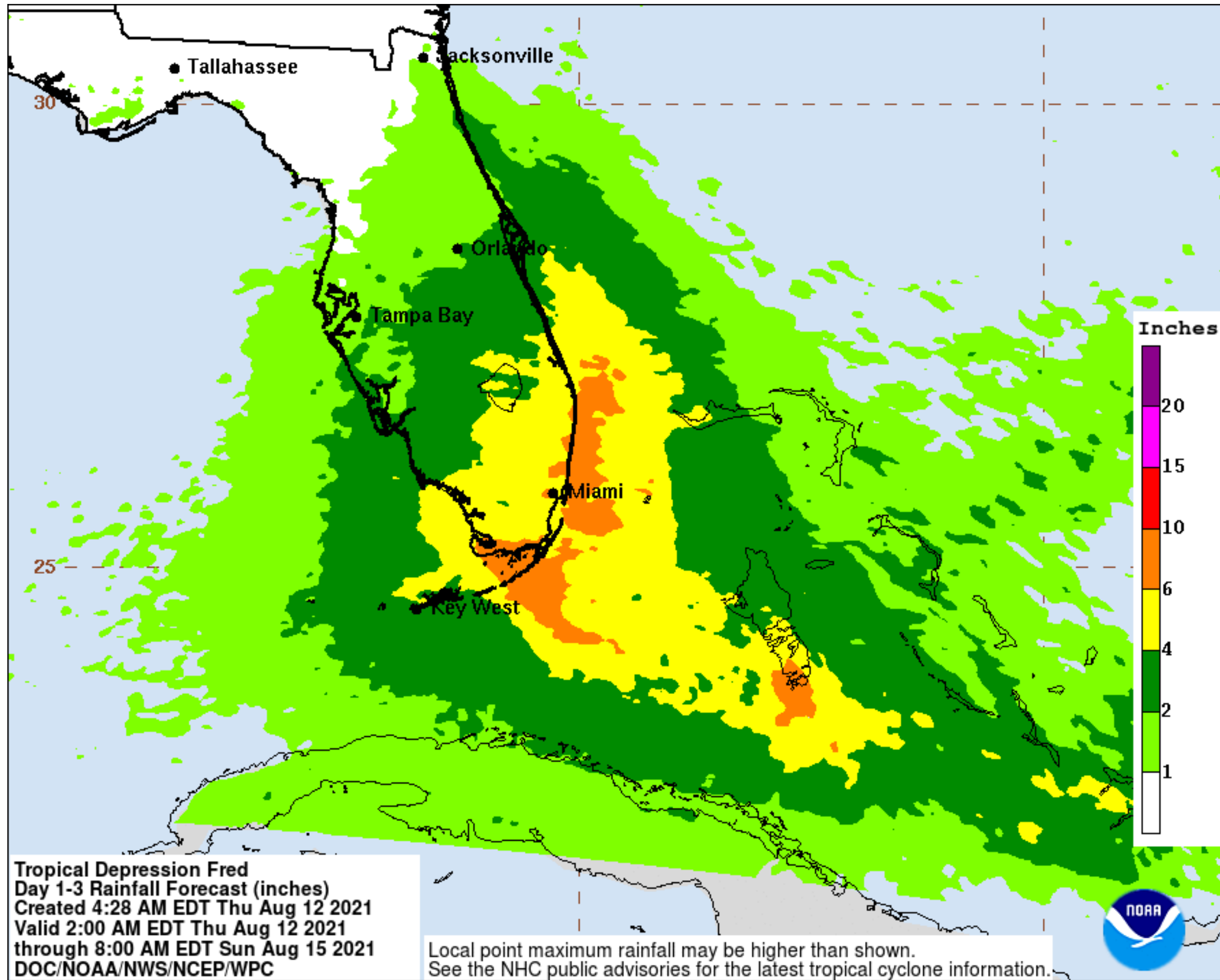
Expected Storm Total Rainfall and Chance of Rainfall Flooding



Tropical Analysis and Forecast Branch
NWS National Hurricane Center

Tropical Depression Fred

Images from NWS Weather Prediction Center



- Total rainfall in inches through Sun morning.

Risk of rainfall exceeding flash flood guidance within 25 miles of a point

HIGH: > 50% **SLGTL: 10%-20%**
MDT: 20%-50% **MRGL: 5%-10%**

Valid 8 AM EDT Thu Aug 12 through 8 AM Sun Aug 15

Key Messages

Tropical Depression Fred



Tropical Analysis and Forecast Branch
NWS National Hurricane Center

Key Messages for Tropical Depression Fred Advisory 11: 5:00 AM EDT Thu Aug 12, 2021

1. Continued heavy rainfall today could lead to flash, urban, and small stream flooding, along with possible rapid river rises and potential mudslides in the Dominican Republic and Haiti.
2. Tropical storm conditions are possible in northern Haiti and the southeastern Bahamas this morning, and in portions of Cuba later today.
3. Beginning Friday, heavy rainfall could lead to areal, urban, and small stream flooding, and possible rapid river rises across southern Florida. Heavy rainfall associated with Fred will impact the remainder of Florida and parts of the Southeast this weekend and into next week.
4. There is a risk of tropical storm conditions beginning early Saturday in the Florida Keys and south Florida. These conditions are expected to spread northward along portions of the Florida west coast and the Florida Panhandle through Monday.



For more information go to hurricanes.gov

IMPACTS FOR D7 (through next 5 days)

Winds - Moderate

Storm Surge - Low

Rainfall/Flash Flooding - Moderate

Tornadoes - None

Waves - Low



TROPICAL DEPRESSION FRED BRIEFING

You can contact the Tropical Analysis and Forecast Branch at
305-229-4424

You can always find get the latest graphics and information for this storm at www.hurricanes.gov



NHC_TAFB

www.nhc.noaa.gov