

IMPACTS FOR D8 (through next 5 days)

Winds – High

Storm Surge – High

Rainfall/Flash Flooding – High

Tornadoes – Low

Waves - High

TROPICAL DEPRESSION NINE BRIEFING



5:00 PM CDT
Thursday, August 26, 2021

Prepared by:
Maria M. Torres

*Tropical Analysis and Forecast Branch
NWS National Hurricane Center*



NHC_TAFB

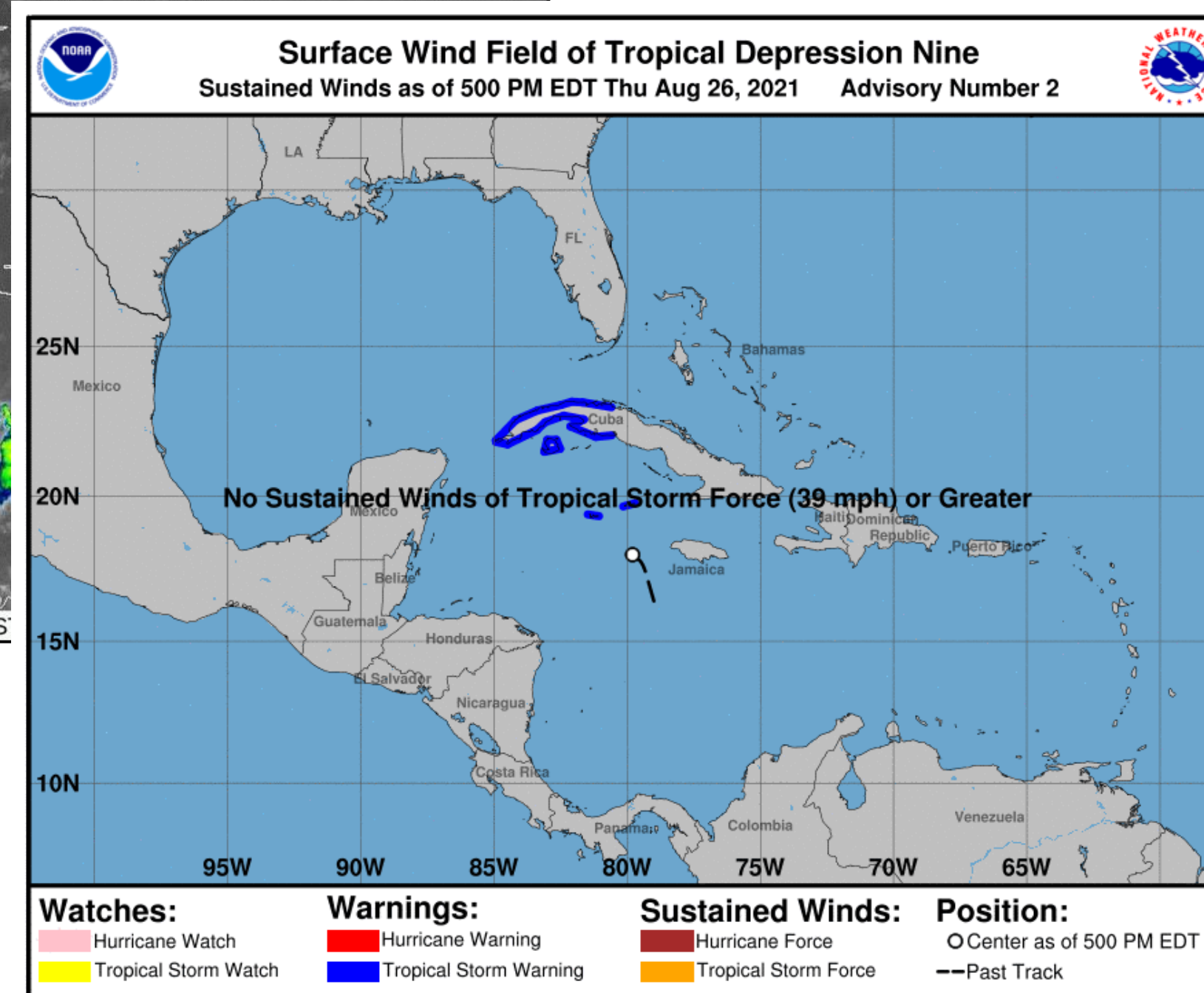
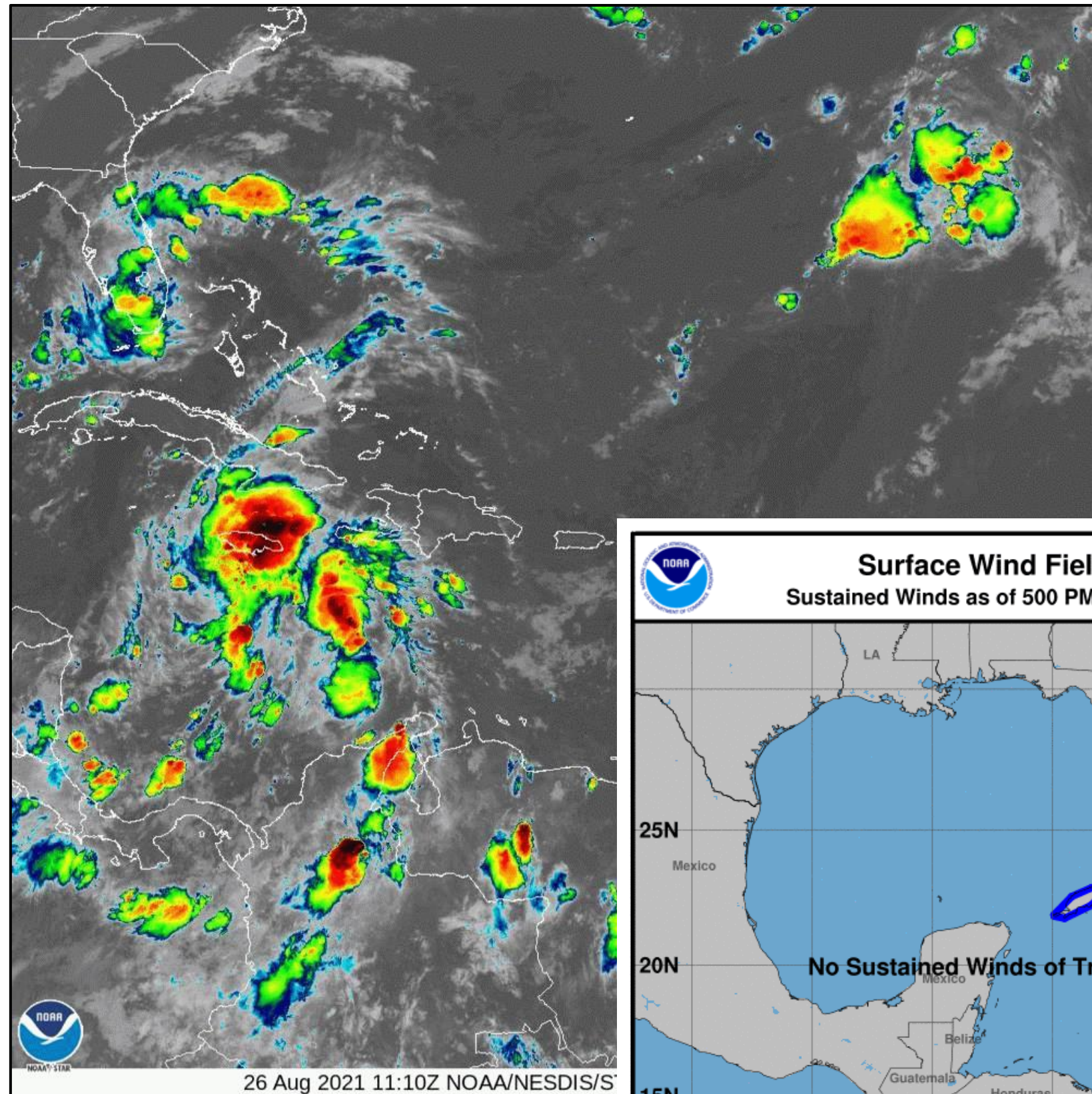
www.nhc.noaa.gov

Situation Overview

Tropical Depression Nine



Tropical Analysis and Forecast Branch
NWS National Hurricane Center



...DEPRESSION EXPECTED TO STRENGTHEN
INTO A TROPICAL STORM SOON...

Summary of 400 PM CDT...2100
UTC...Information

LOCATION...18.0N 79.8W
ABOUT 85 NM WSW OF NEGRIL JAMAICA
MAXIMUM SUSTAINED WINDS...30 KT
PRESENT MOVEMENT...NW OR 325 DEGREES
AT 12 KT

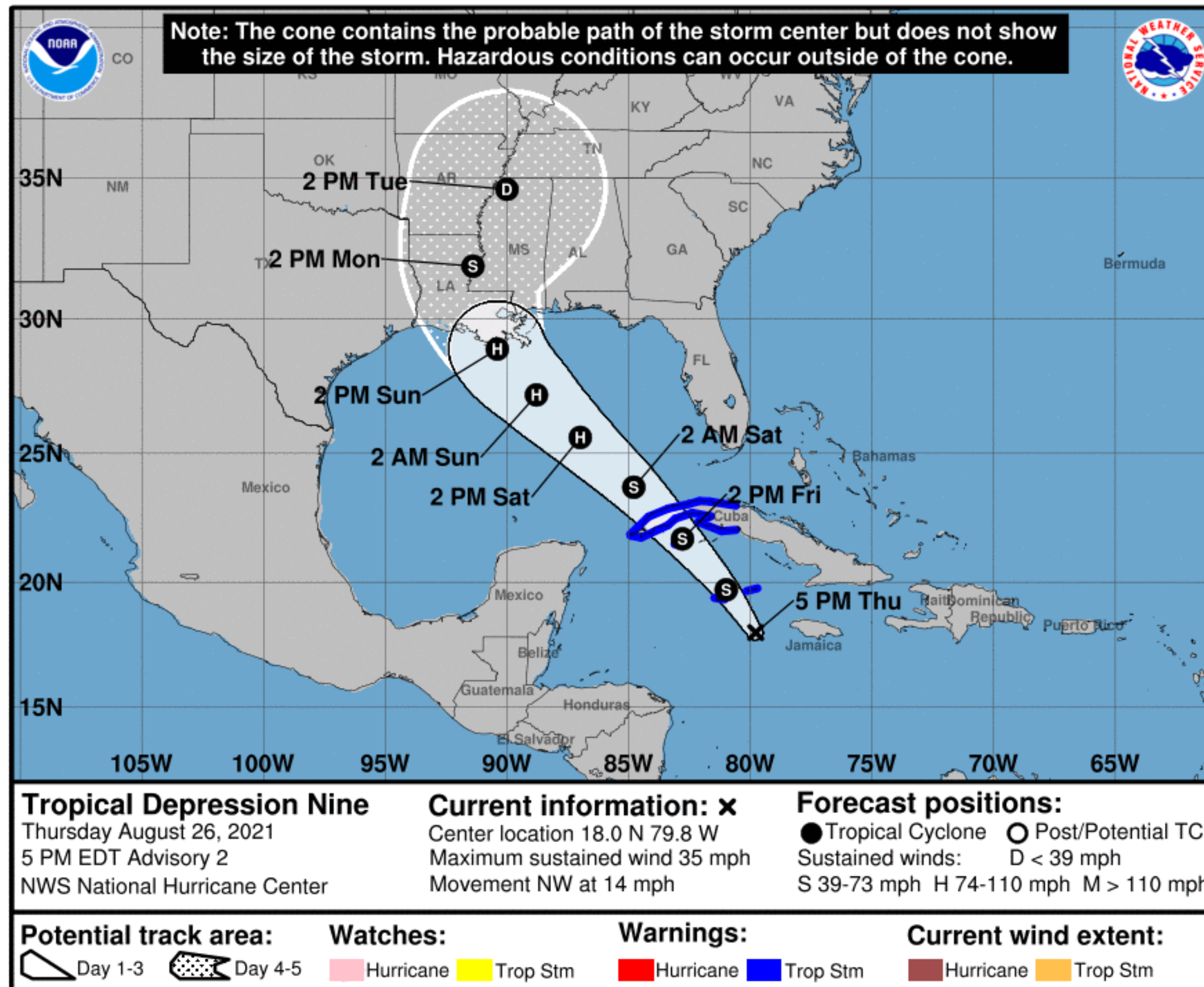
PEAK SEAS: 10 ft

Forecast Information

Tropical Depression Nine



Tropical Analysis and Forecast Branch
NWS National Hurricane Center



NOTE: Do not focus on the exact track. Impacts can occur well outside the area enclosed by the cone.

- **The system will continue moving towards the west-northwest during the next few days**
- **The system is expected to intensify and become a hurricane by Saturday as it moves into the Gulf of Mexico**
- **Landfall expected as a hurricane (perhaps a major hurricane) anytime between Sunday morning to Monday morning between the upper Texas coast and Alabama**
- Current center forecast positions through the next 5 days (if applicable) illustrated by dots
- White swath of potential track is average track error added to each side of the forecast track through day 3
- Hatched swath of potential track is average track error added to each side of the forecast track days 4-5

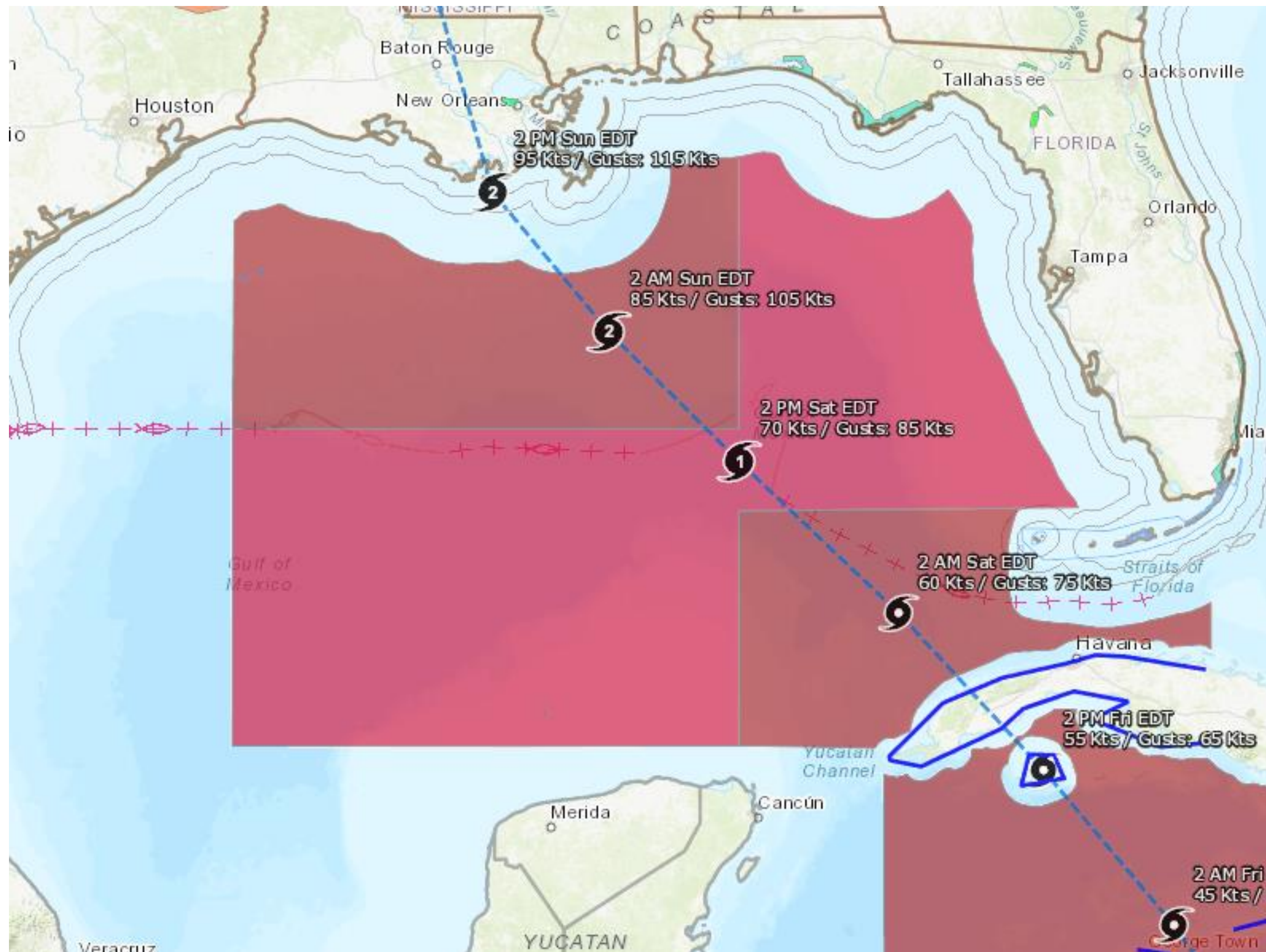
** Swaths are calculated using average track errors and actual track may be well inside, or possibly outside the potential track areas indicated.

Hazards Map

Tropical Depression Nine



Tropical Analysis and Forecast Branch
NWS National Hurricane Center



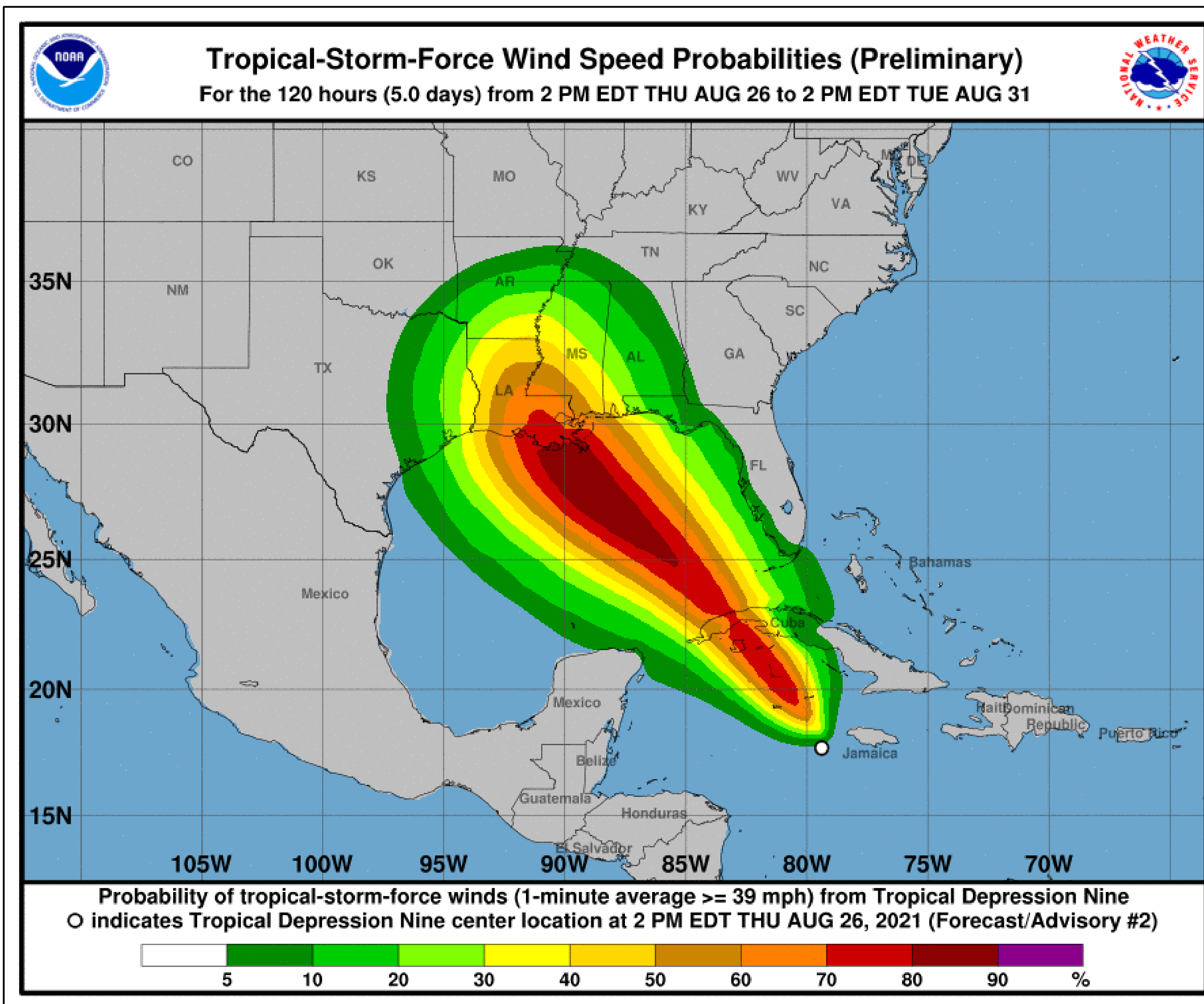
■ <https://nowcoast.noaa.gov/>

T.S. Wind Speed Probabilities

Tropical Depression Nine



Tropical Analysis and Forecast Branch
NWS National Hurricane Center



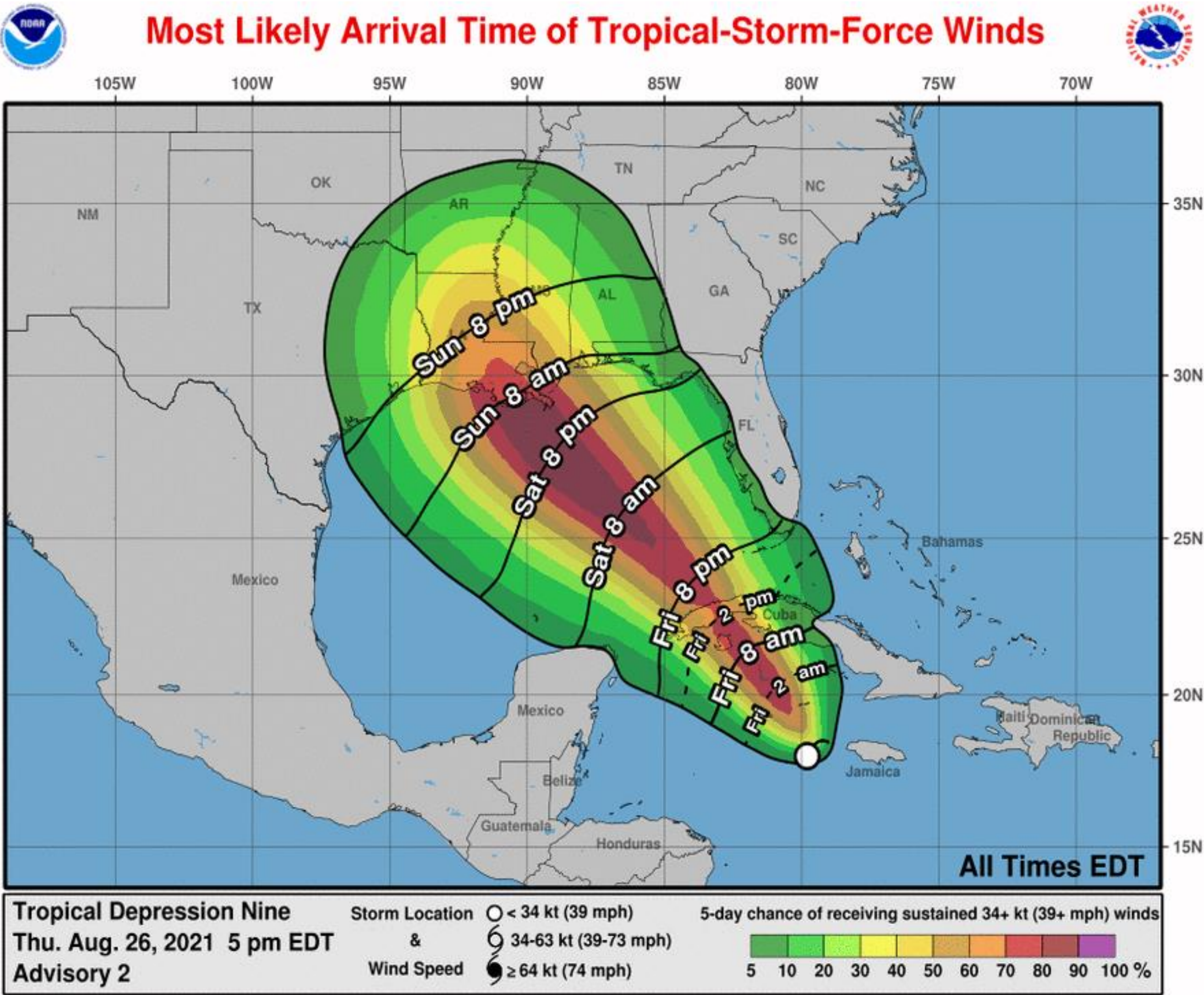
- **Pensacola – 30%**
 - **Mobile – 40%**
 - **Gulfport – 55%**
 - **Stennis – 60%**
 - **Buras – 70%**
 - **New Orleans – 70%**
 - **Morgan City – 70%**
 - **Lafayette – 65%**
 - **New Iberia – 65%**
 - **Lake Charles – 45%**
 - **Cameron – 50%**
 - **Port Arthur – 35%**
 - **Galveston – 25%**
 - **High Island – 25%**
- Probabilities of sustained tropical storm force winds (34 kt to 63 kt) over the next 5 days, based off this cyclone's wind radii and track.
 - Clear or dark green are the lowest chances of 0-30%.
 - Yellow to orange is 31-70%
 - Red through purple are the highest probabilities of 71%-100%
 - See the color bar below the image for more details.

Most Likely Time of Arrival

Tropical Depression Nine



Tropical Analysis and Forecast Branch
NWS National Hurricane Center



- **NW Florida, Alabama, Mississippi, SE Louisiana – late Saturday night**
- **South Central Louisiana – Sunday morning**
- **SW Louisiana, Upper Texas – Sunday afternoon**
- The earliest reasonable time of arrival of Tropical Storm Force Winds (34kt to 63 kt) for this cyclone based off the current track and wind radii.
- Clear or dark green are the lowest chances of 0-30%.
- Yellow to orange is 31-70%
- Red through purple are the highest probabilities of 71%-100%
- See the color bar below the image for more details.

Hurricane Wind Speed Probabilities

Tropical Depression Nine



Tropical Analysis and Forecast Branch
NWS National Hurricane Center



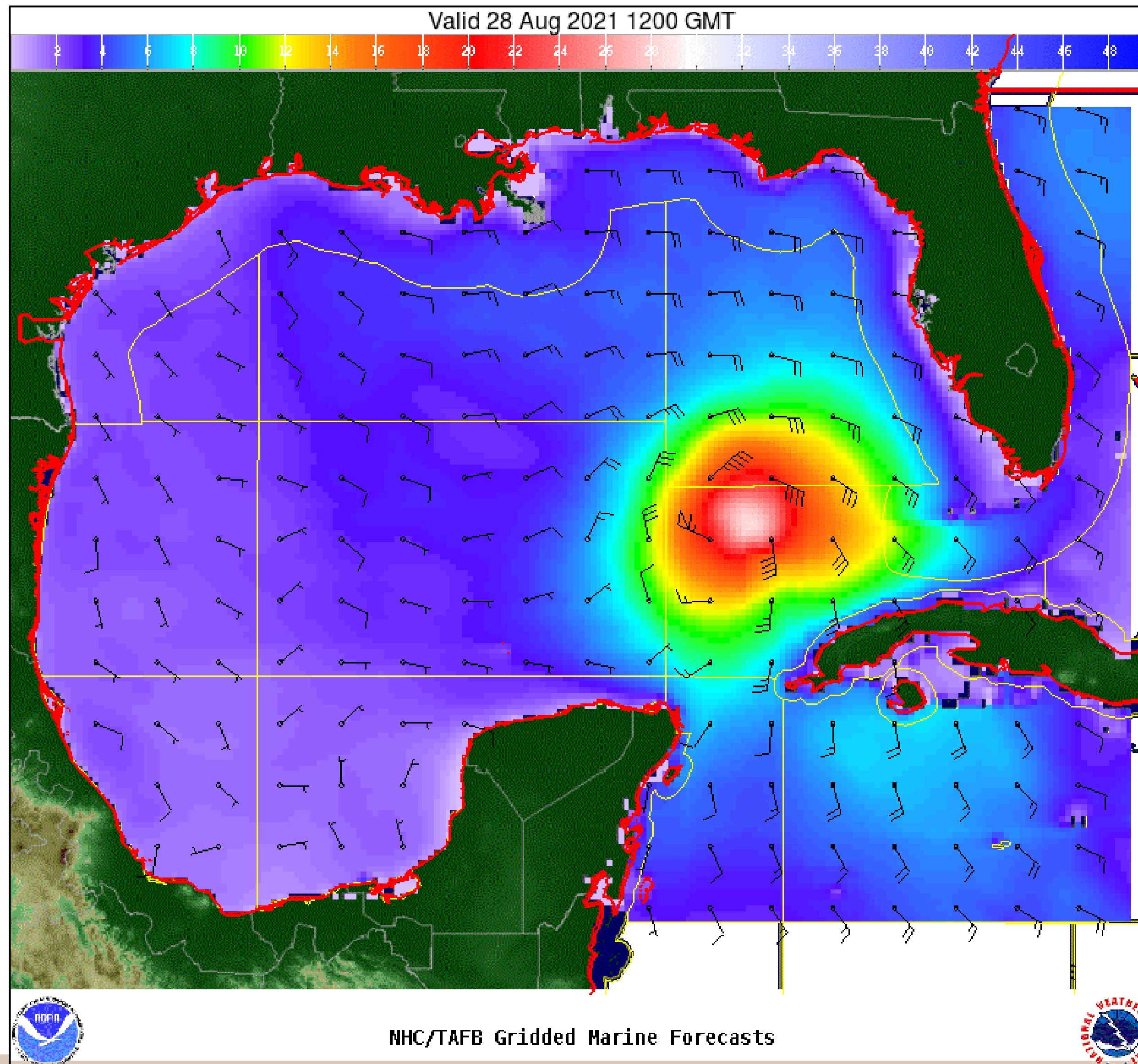
- Stennis – 10%
- Buras – 15%
- New Orleans – 15%
- Morgan City – 15%
- Lafayette – 15%
- New Iberia – 15%
- Lake Charles – 10%
- Cameron – 10%
- Probabilities of sustained hurricane force winds (64 kt +) over the next 5 days, based off this cyclone's wind radii and track.
- Clear or dark green are the lowest chances of 0-30%.
- Yellow to orange is 31-70%
- Red through purple are the highest probabilities of 71%-100%
- See the color bar below the image for more details.

Wind And Waves

Tropical Depression Nine



Tropical Analysis and Forecast Branch
NWS National Hurricane Center



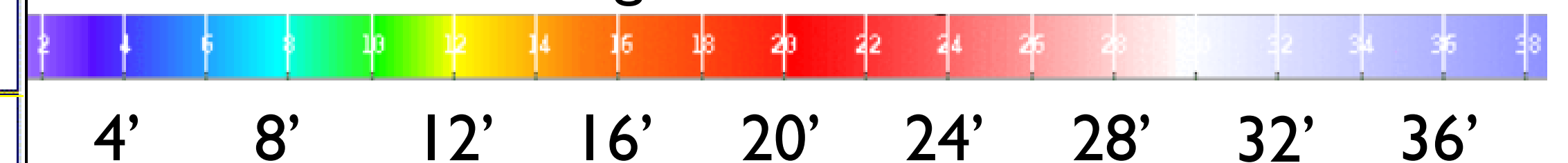
48 Hour Forecast

7 AM CDT Saturday, August 28th

Peak Winds: 70 kts

Peak Seas: 25 ft

■ Wave heights are in feet

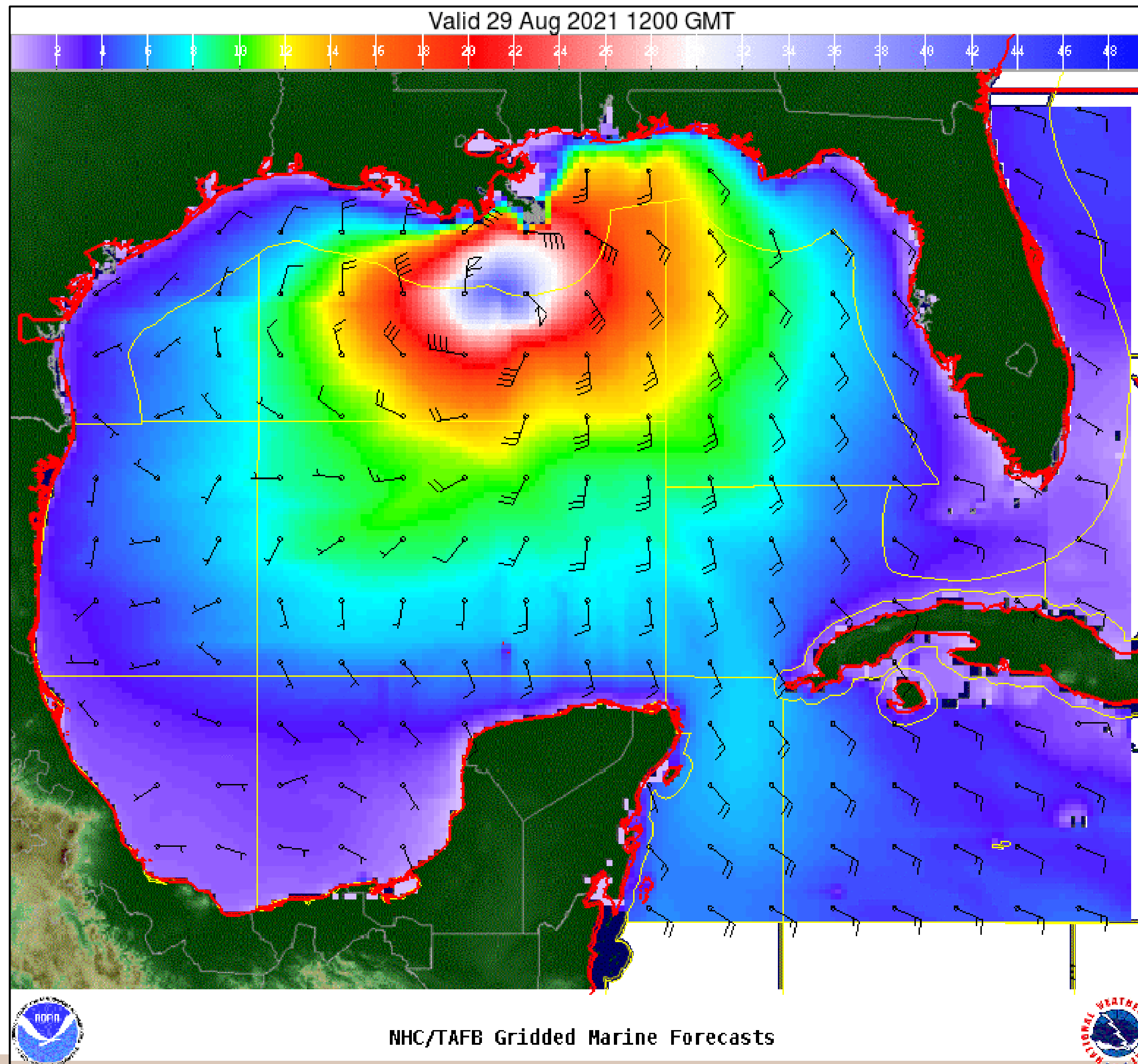


Wind And Waves

Tropical Depression Nine



Tropical Analysis and Forecast Branch
NWS National Hurricane Center



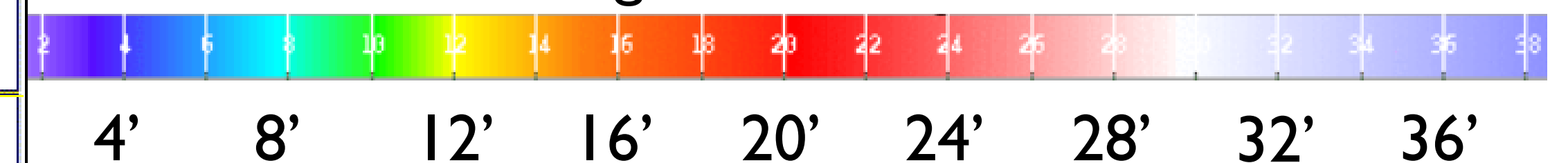
72 Hour Forecast

7 AM CDT Sunday, August 29th

Peak Winds: 95 kts

Peak Seas: 35 ft

■ Wave heights are in feet

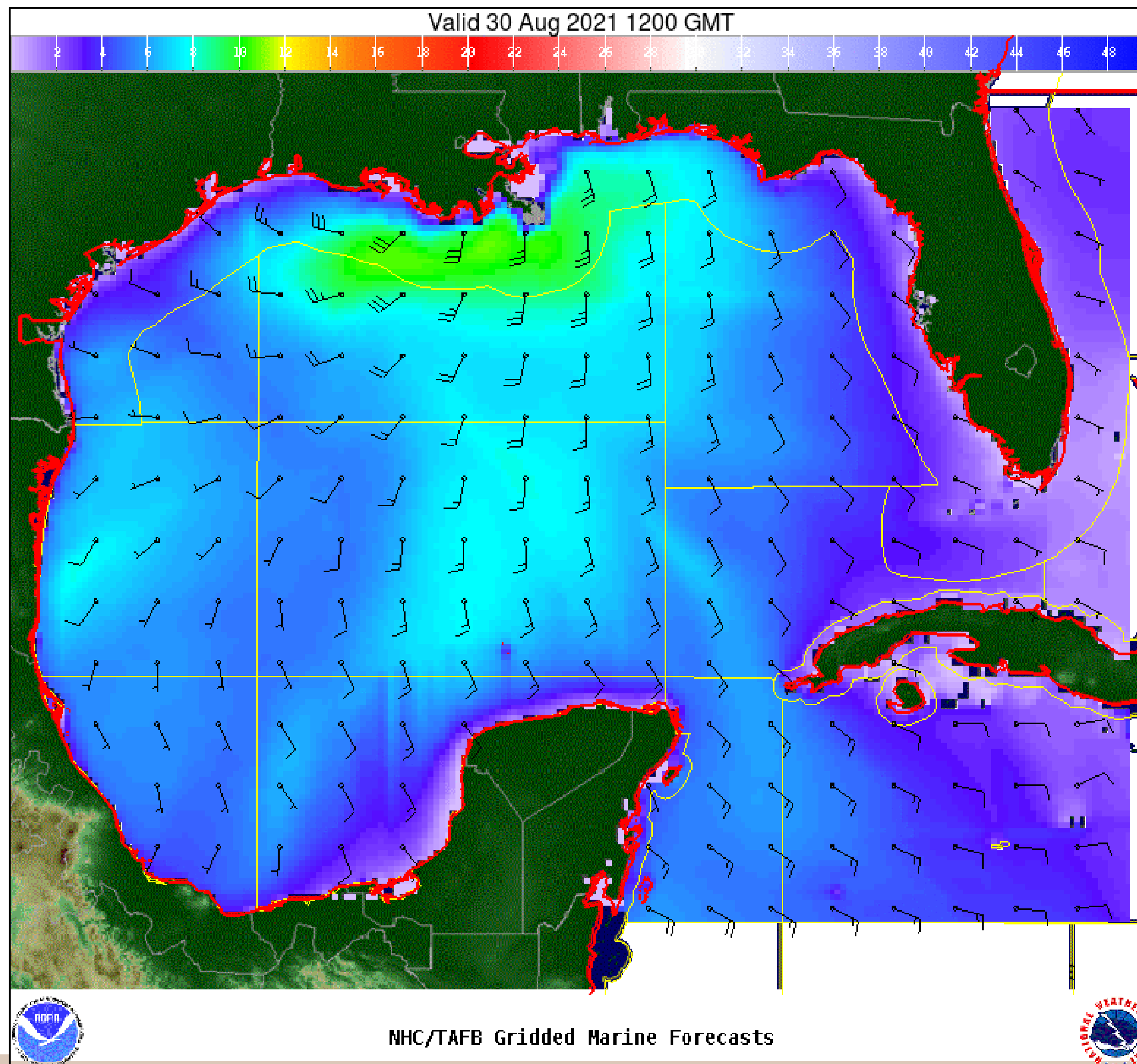


Wind And Waves

Tropical Depression Nine



Tropical Analysis and Forecast Branch
NWS National Hurricane Center



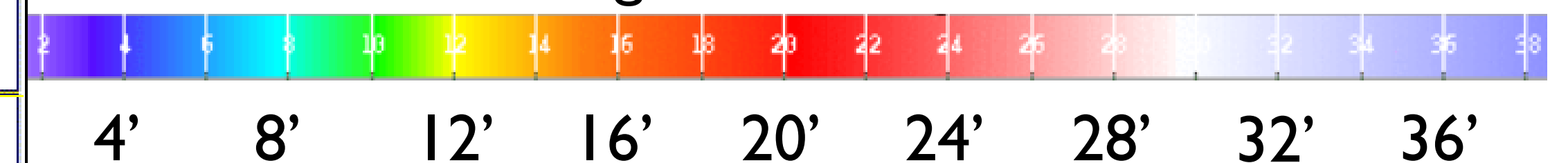
96 Hour Forecast

7 AM CDT Monday, August 30th

Peak Winds: 30 kts (over water)

Peak Seas: 12 ft

■ Wave heights are in feet



Potential Storm Surge

Tropical Depression Nine



Tropical Analysis and Forecast Branch
NWS National Hurricane Center

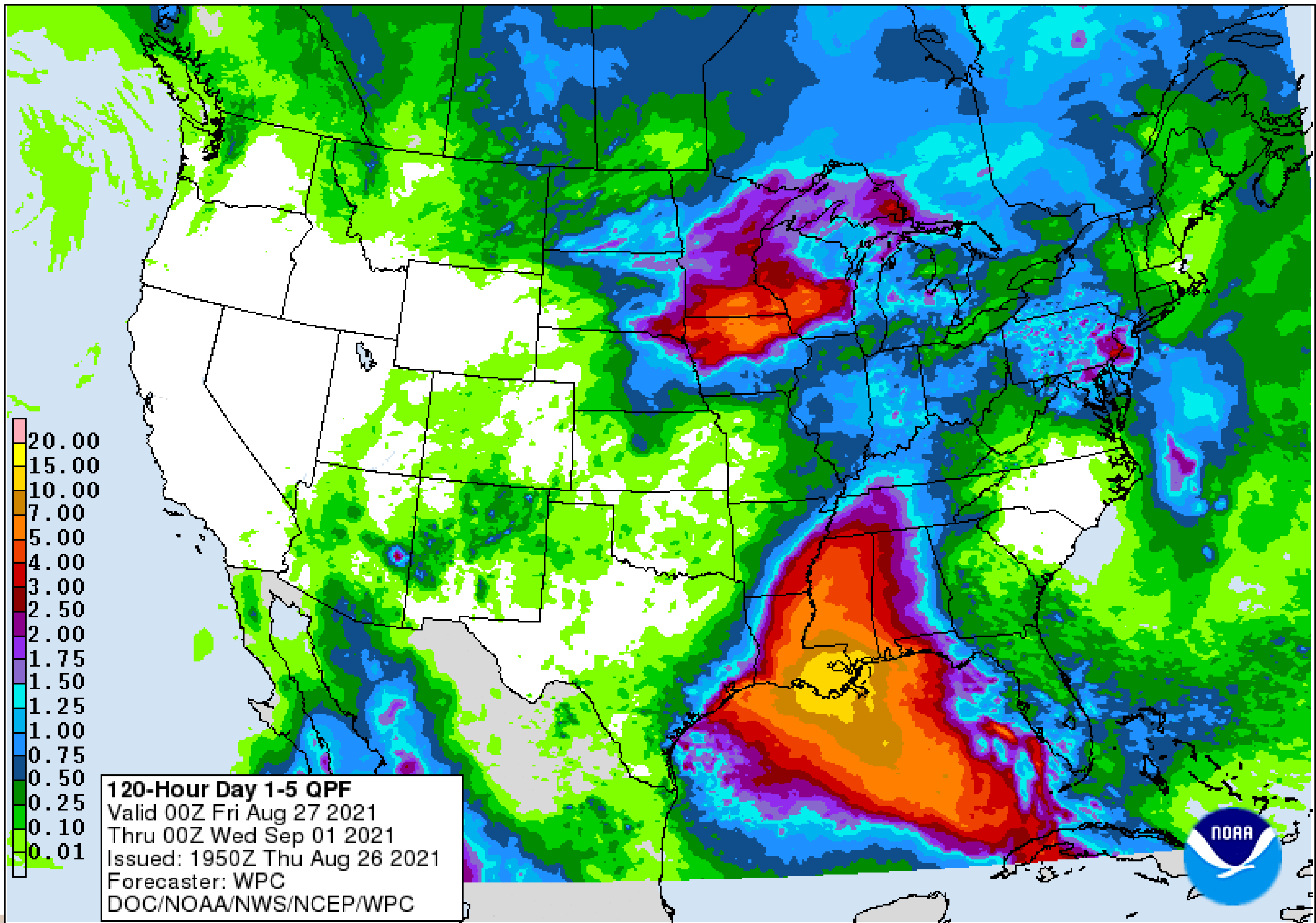
- **Storm Surge expected to be High Impact with salt-water flooding from a Hurricane – possibly a Major (Category 3) Hurricane – somewhere along the upper Texas, Louisiana, Mississippi, and/or Alabama coasts.**
- **MEOWs (Maximum Envelope of Water) files have been provided this afternoon.**

Expected Storm Total Rainfall



Tropical Analysis and Forecast Branch
NWS National Hurricane Center

Tropical Depression Nine Images from NWS Weather Predication Center



- Total rainfall in inches through Tuesday night.

Key Messages

Tropical Depression Nine



Tropical Analysis and Forecast Branch
NWS National Hurricane Center



Key Messages for Tropical Depression Nine

Advisory 2: 5:00 PM EDT Thu Aug 26, 2021

1. Tropical storm conditions are expected in portions of the Cayman Islands tonight and in portions of western Cuba and the Isle of Youth Friday. Dangerous storm surge is possible Friday in portions of western Cuba, including the Isle of Youth, in areas of onshore flow.
2. Life-threatening heavy rains, flash flooding and mudslides are expected across Jamaica, the Cayman Islands, and western Cuba, including the Isle of Youth.
3. The system is forecast to approach the northern Gulf coast at or near major hurricane intensity on Sunday, where there is an increasing risk of life-threatening storm surge, damaging hurricane-force winds, and heavy rainfall Sunday and Monday, especially along the coast of Louisiana. Storm Surge and Hurricane watches will likely be issued for a portion of this area later tonight or Friday morning. Interests in these areas should closely monitor the progress of this system and follow any advice given by local officials.

For more information go to hurricanes.gov



IMPACTS FOR D8 (through next 5 days)

Winds - High

Storm Surge - High

Rainfall/Flash Flooding - High

Tornadoes - Low

Waves - High



TROPICAL DEPRESSION NINE BRIEFING

You can contact the Tropical Analysis and Forecast Branch at
305-229-4424

*The Next Briefing Will Be:
Friday 9:00 AM CDT*

You can always find get the latest graphics and information for this storm at www.hurricanes.gov



NHC_TAFB

www.nhc.noaa.gov