

IMPACTS FOR D8 (through next 2 days)

Winds – Low

Storm Surge – None

Rainfall/Flash Flooding – Moderate

Tornadoes – Low

Waves - Low

INVEST AL91 BRIEFING

2:00 PM CDT

Friday, May 21, 2021

Prepared by:

Chris Landsea

*Tropical Analysis and Forecast Branch
NWS National Hurricane Center*



NHC_TAFB

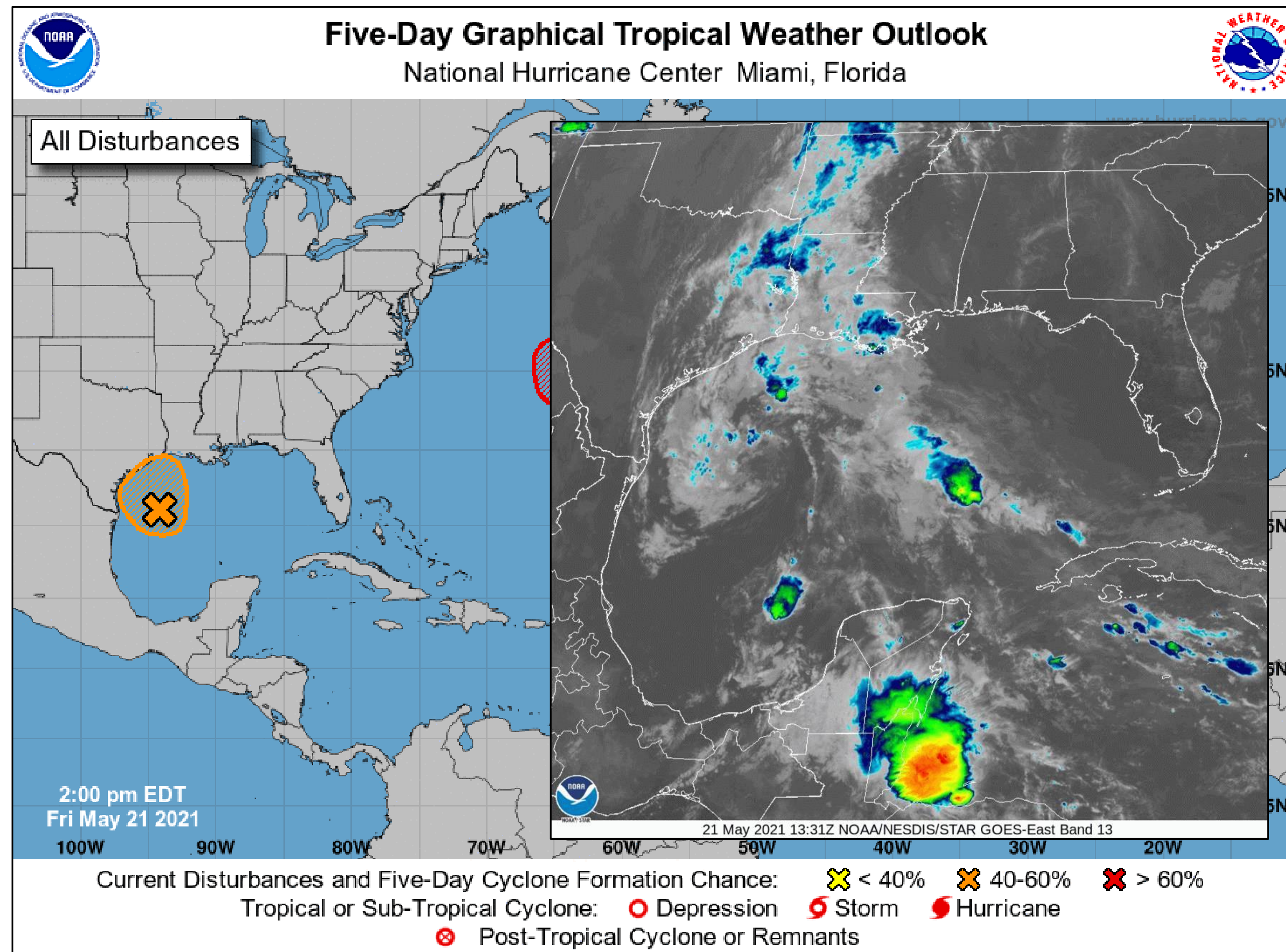
www.nhc.noaa.gov

Tropical Weather Outlook

Invest AL91



Tropical Analysis and Forecast Branch
NWS National Hurricane Center



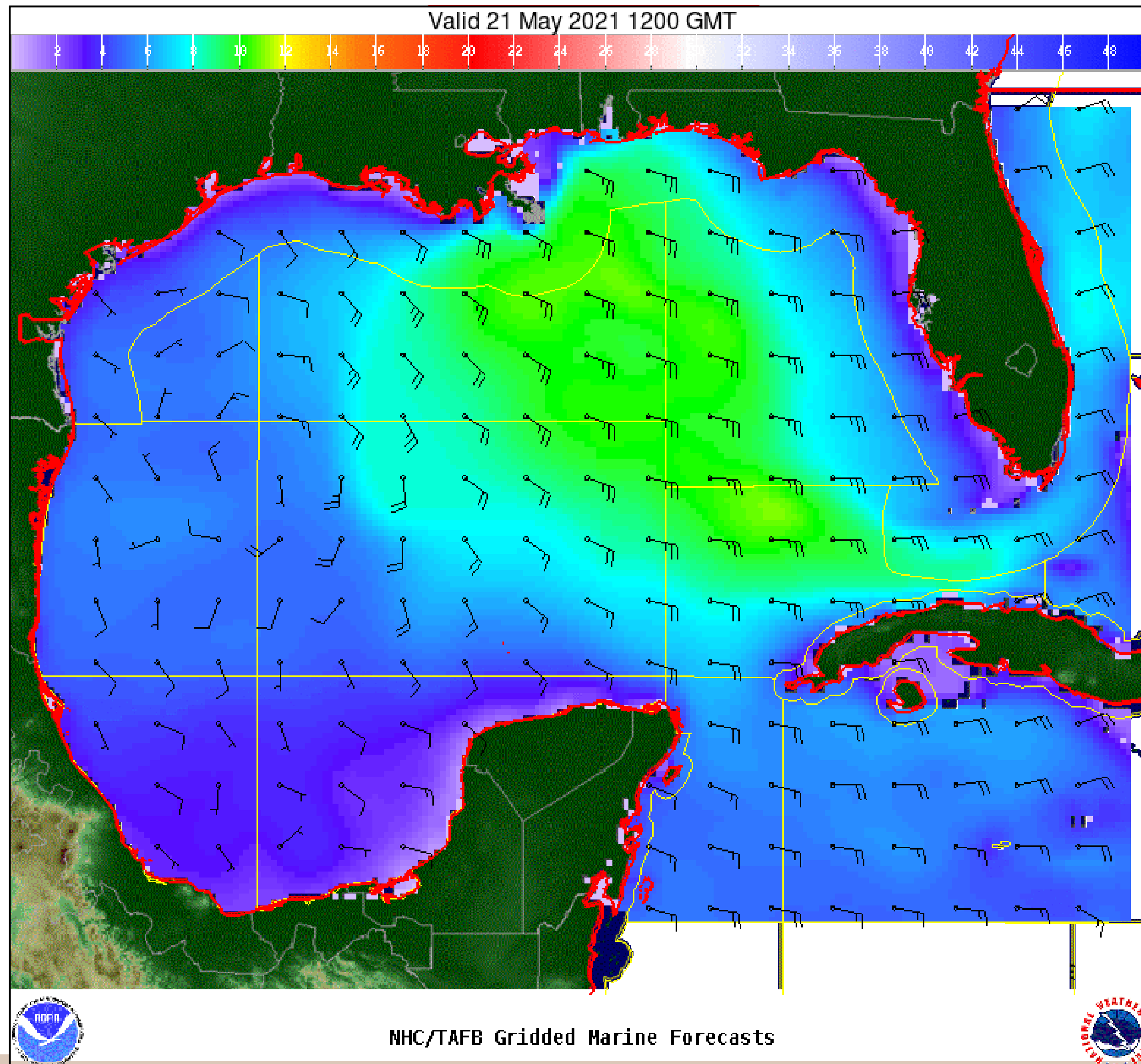
- Well-defined low pressure system over the western Gulf of Mexico has winds of 30-35 mph near and east of the center
- The associated shower and thunderstorm activity remains limited
- Short-lived tropical depression or storm before the system moves inland over the northwestern Gulf coast tonight
- Potential tropical cyclone advisories may be needed as early as this afternoon.
- **Reminder:** *The hatched area represents a possible development area, not the system's path after development occurs.*

Wind And Waves

Invest AL91



Tropical Analysis and Forecast Branch
NWS National Hurricane Center



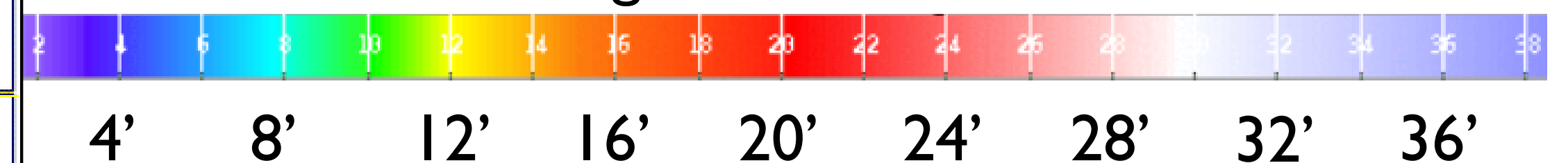
Current Conditions

7am CDT Friday, May 21st, 2021

Peak Winds: 25 kt (indirectly associated)

Peak Seas: 10-12 ft

■ Wave heights are in feet

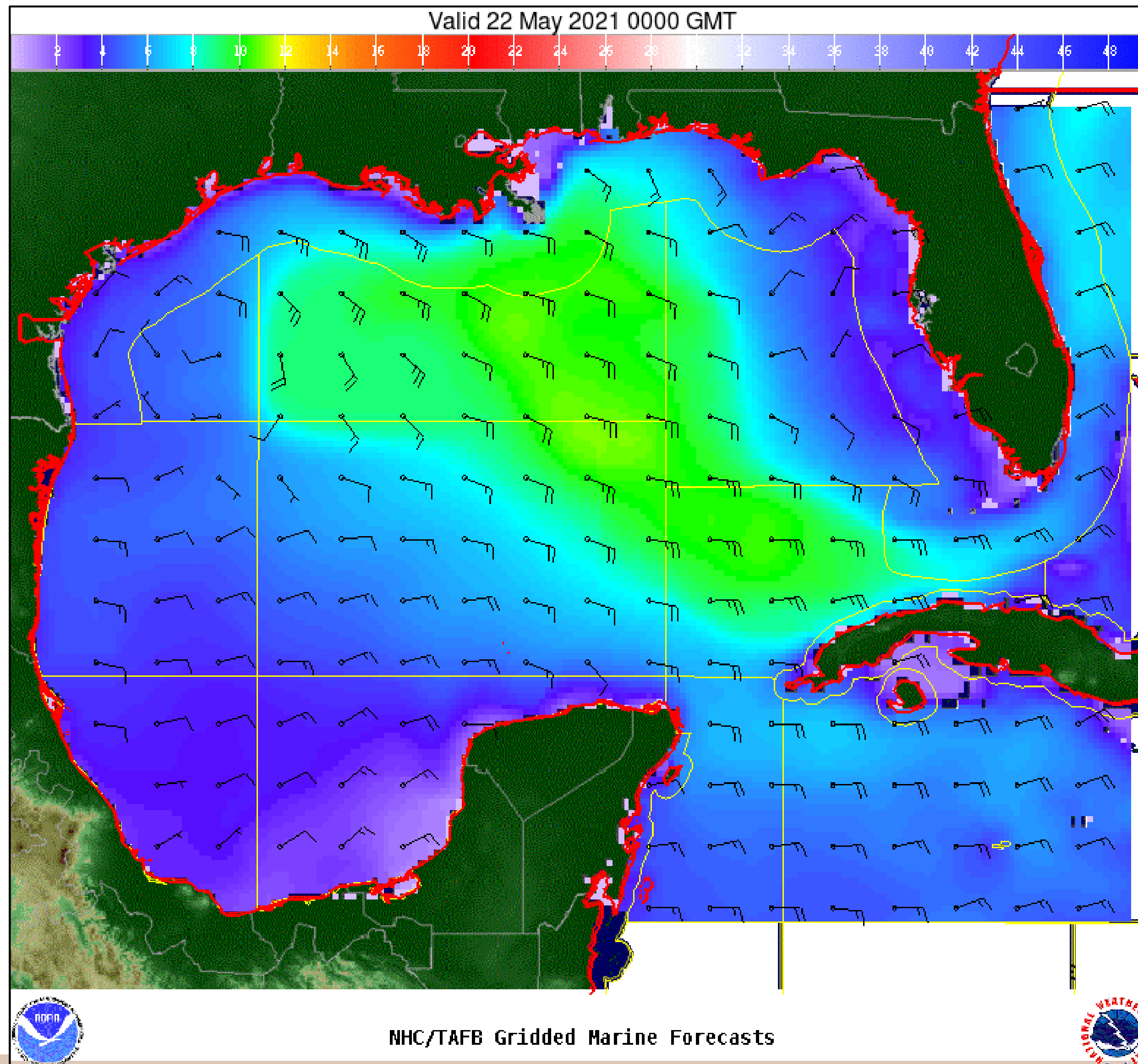


Wind And Waves

Invest AL91



Tropical Analysis and Forecast Branch
NWS National Hurricane Center



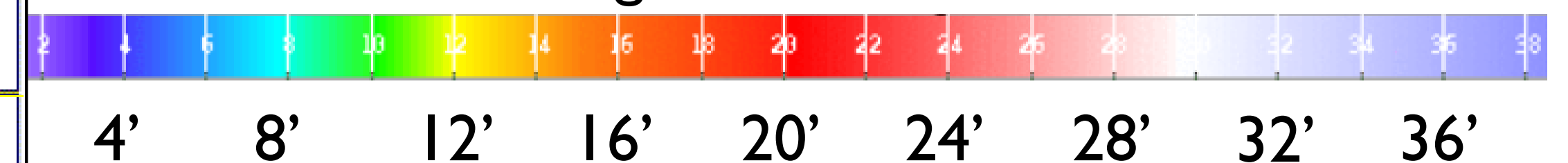
Tonight's Forecast

7pm CDT, Friday, May 21st, 2021

Peak Winds: 25 kt

Peak Seas: 10-12 ft

■ Wave heights are in feet

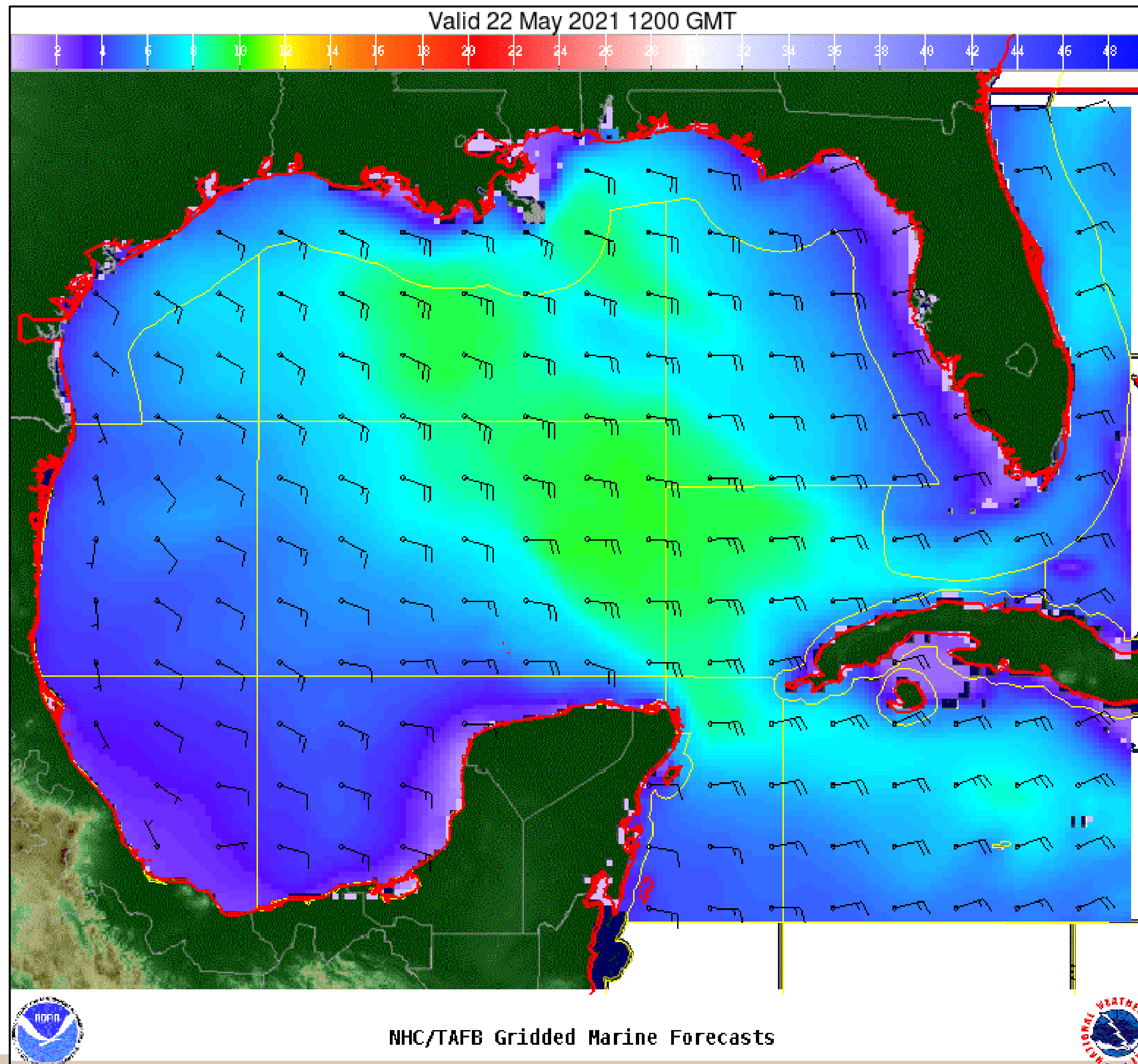


Wind And Waves

Invest AL91



Tropical Analysis and Forecast Branch
NWS National Hurricane Center



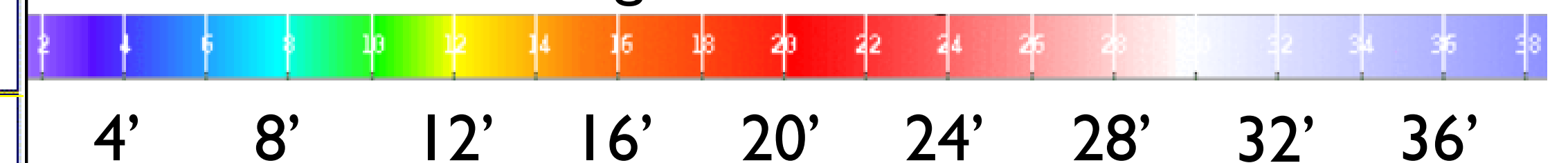
Tomorrow Morning's Forecast

7am CDT, Saturday, May 22nd, 2021

Peak Winds: 25 kt

Peak Seas: 8-10 ft

■ Wave heights are in feet



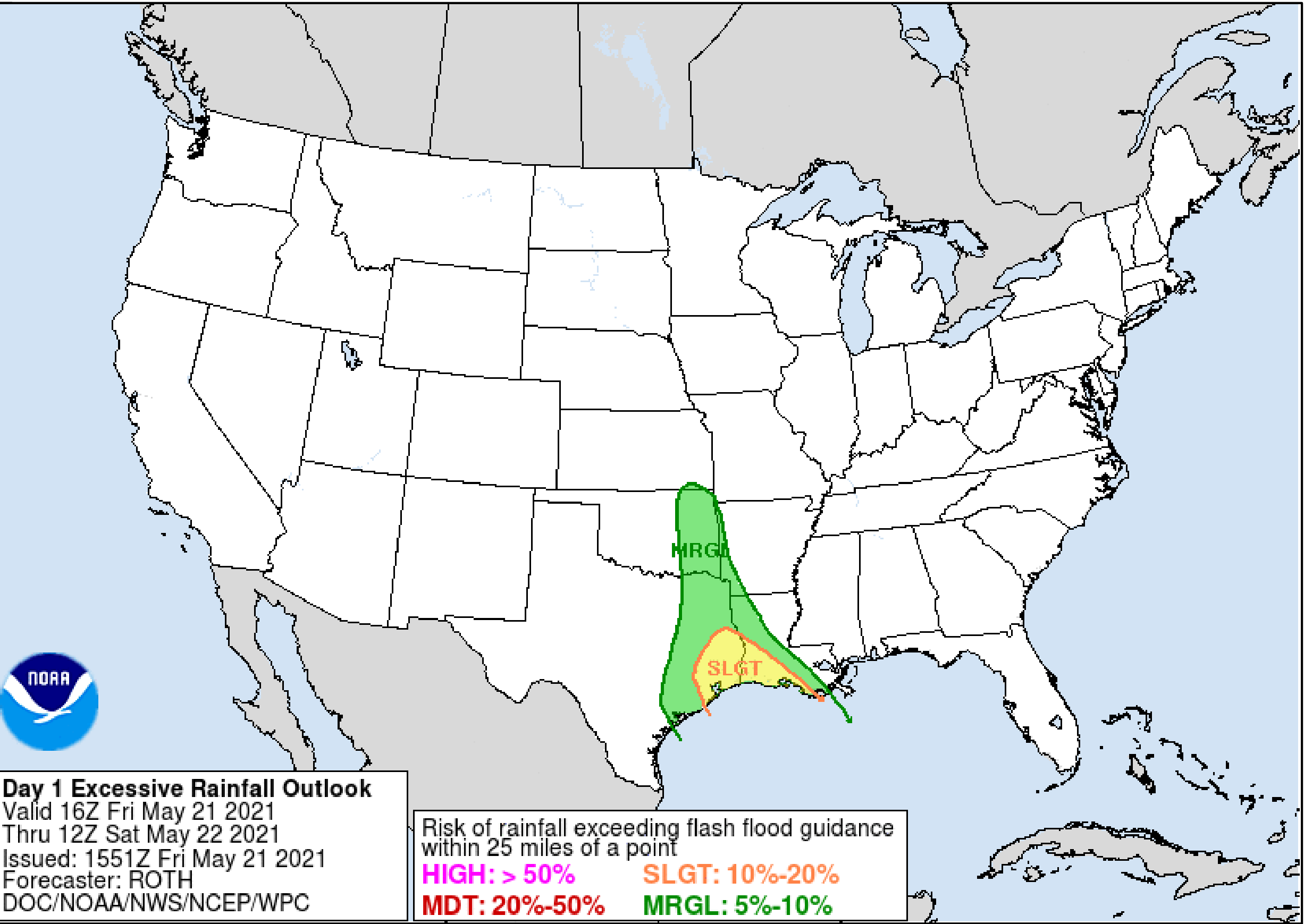
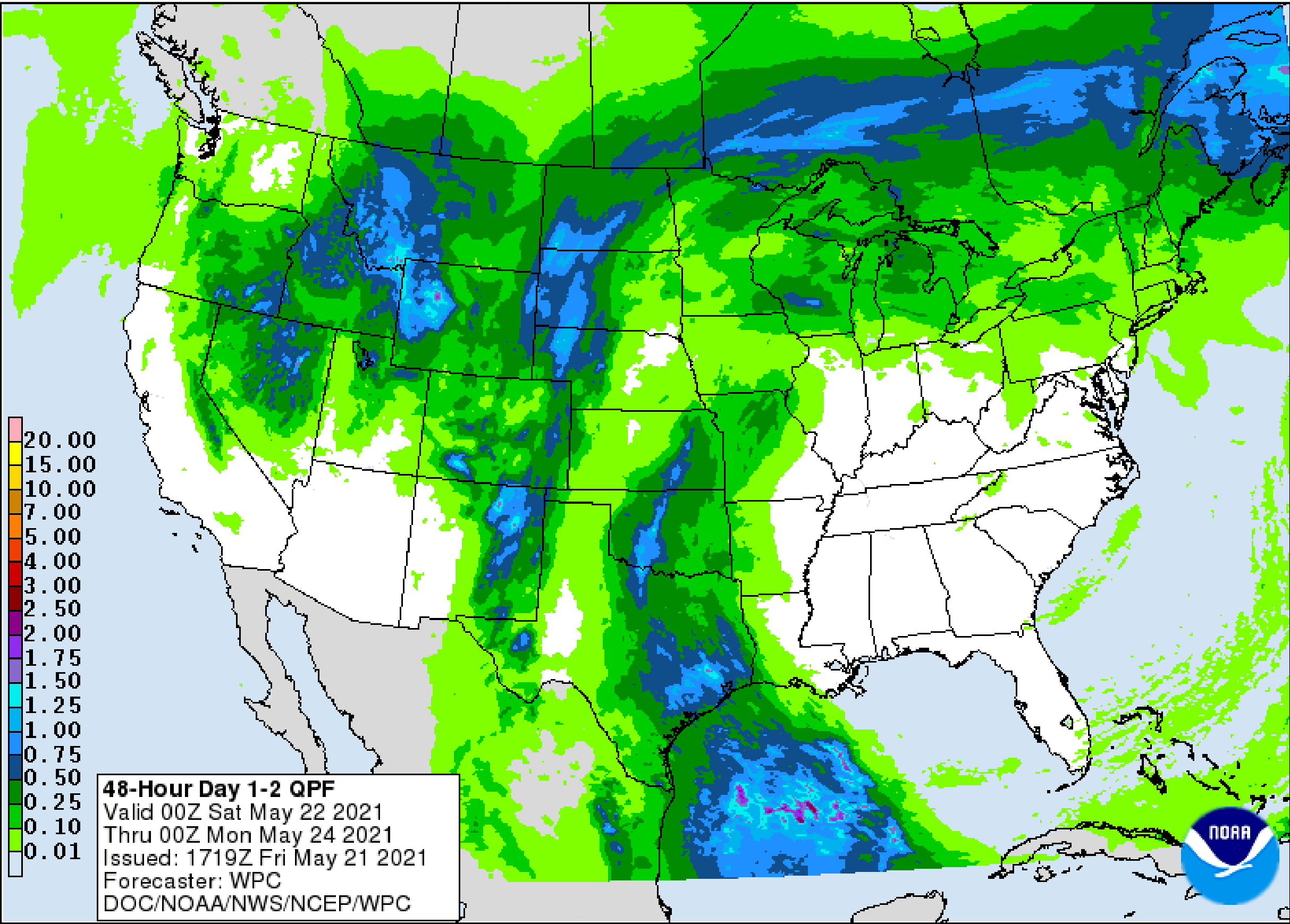
Expected Storm Total Rainfall and Chance of Rainfall Flooding



Tropical Analysis and Forecast Branch
NWS National Hurricane Center

Invest AL9I

Images from NWS Weather Prediction Center



- Total rainfall in inches during the time span stated on the map.

Risk of rainfall exceeding flash flood guidance
within 25 miles of a point
HIGH: > 50% **SLGT: 10%-20%**
MDT: 20%-50% **MRGL: 5%-10%**

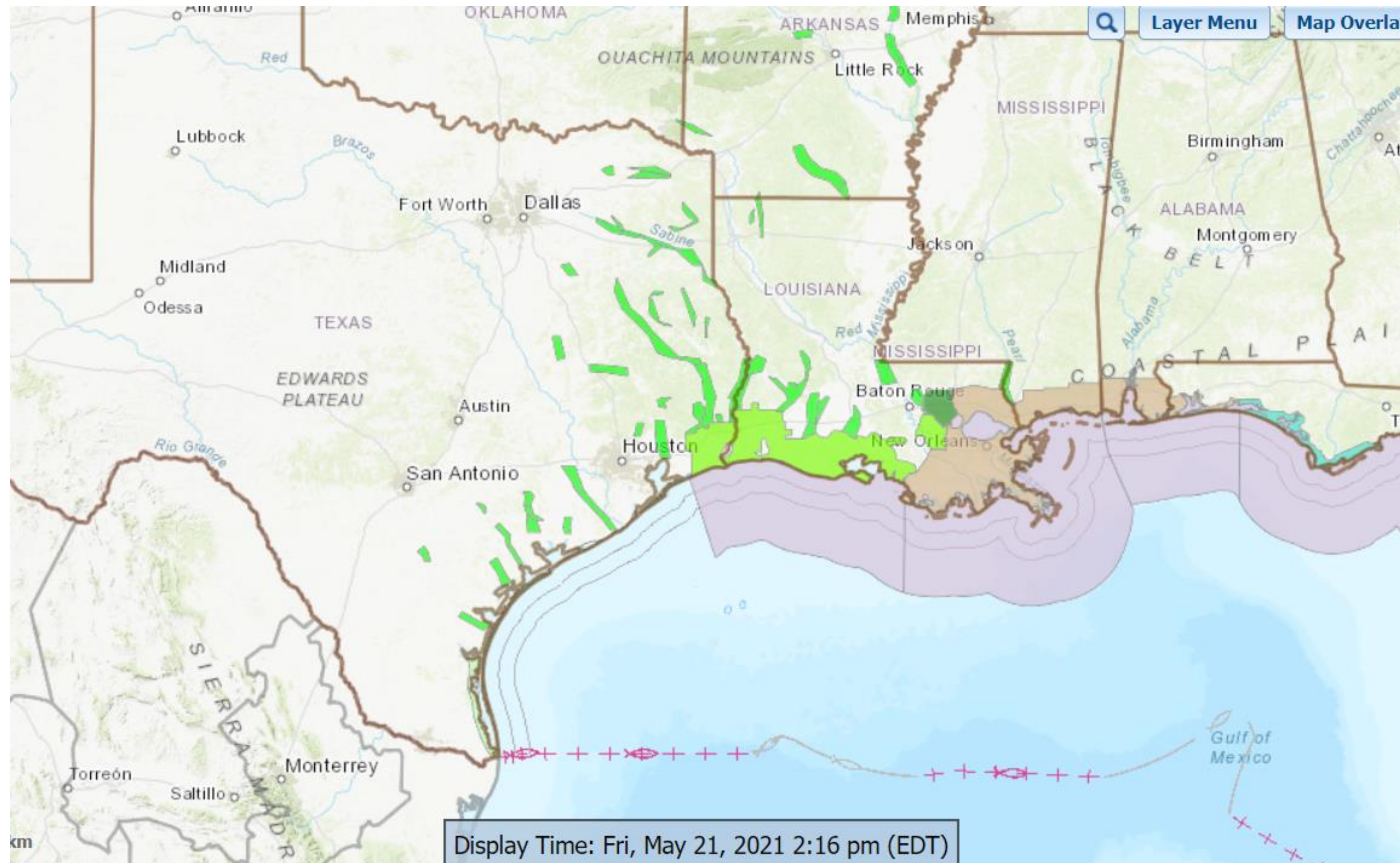
Refer to map legend for Valid Time

Hazards Map

Invest AL9I



Tropical Analysis and Forecast Branch
NWS National Hurricane Center



<https://nowcoast.noaa.gov/>

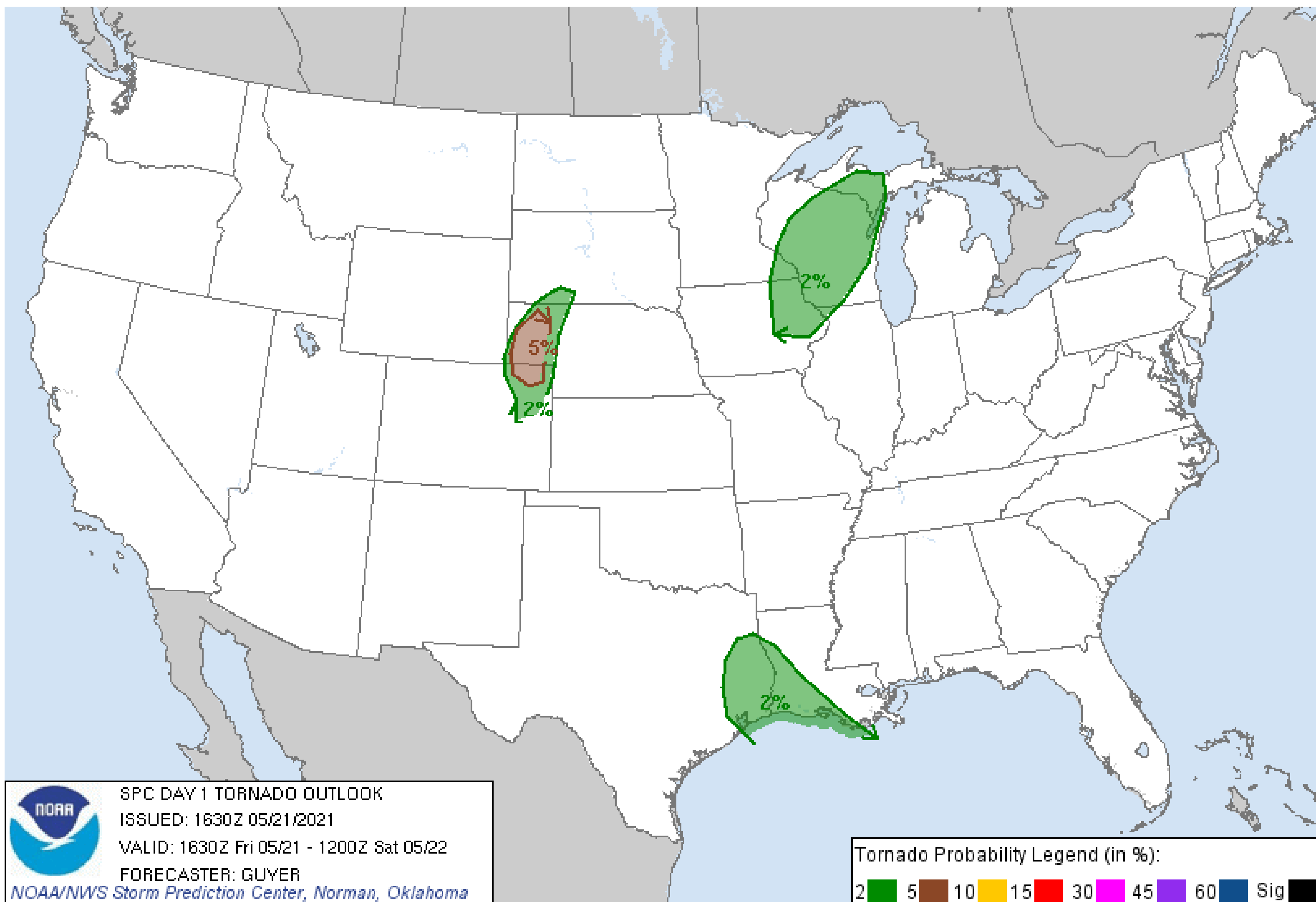
Tornado Outlook – Day 1

Invest AL91

Image from NWS Storm Prediction Center



Tropical Analysis and Forecast Branch
NWS National Hurricane Center



- Slight chance of Tornadoes in Louisiana and Texas

INVEST AL91 BRIEFING

IMPACTS FOR **D8** (through next 2 days)

Winds – **Low**

Storm Surge – **None**

Rainfall/Flash Flooding – **Moderate**

Tornadoes – **Low**

Waves - **Low**

- Well-defined low pressure system over the western Gulf of Mexico has winds of 30-35 mph near and east of the center
- The associated shower and thunderstorm activity remains limited
- Short-lived tropical depression or storm before the system moves inland over the northwestern Gulf coast tonight
- Potential tropical cyclone advisories may be needed as early as this afternoon.
- The system could produce heavy rainfall over portions of SE Texas and SW Louisiana through Saturday.
- Given the complete saturation of soils with ongoing river flooding along the Texas and Louisiana coastal areas, heavy rain could lead to flash, urban, and additional riverine flooding across this region.

You can contact
the Tropical
Analysis and
Forecast Branch at
305-229-4424

You can always find get the latest graphics and information for this storm at www.hurricanes.gov

