

IMPACTS FOR D8 (through next 5 days)

Winds – Low-Moderate

Storm Surge – Low

Rainfall/Flash Flooding – Moderate

Tornadoes – Low

Waves - Low

INVEST 92L BRIEFING

11:00 AM CDT

Thursday, June 17, 2021

Prepared by:

Andrew Hagen

*Tropical Analysis and Forecast Branch
NWS National Hurricane Center*

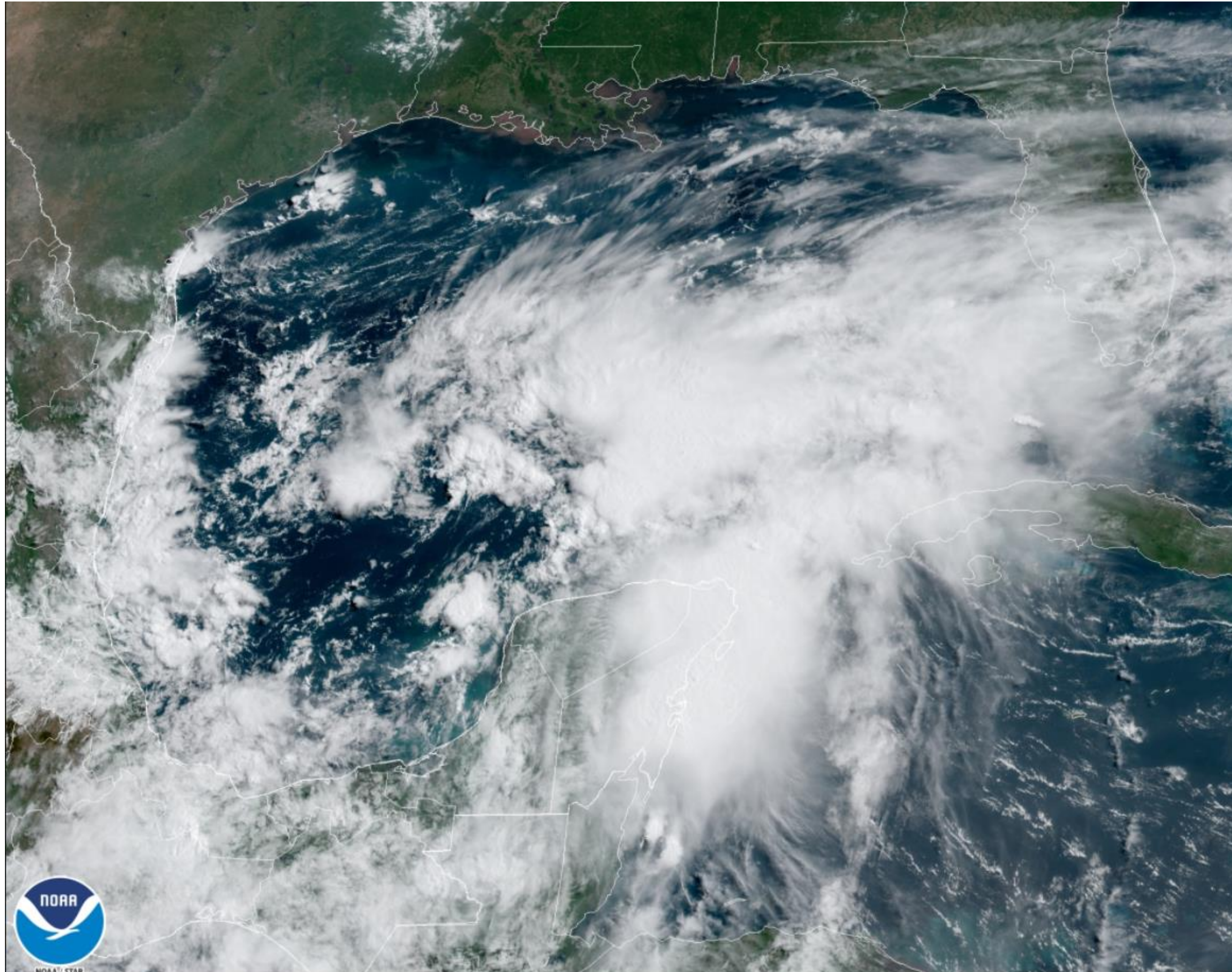


Current Satellite View

Invest 92L



Tropical Analysis and Forecast Branch
NWS National Hurricane Center



17 Jun 2021 14:41Z NOAA/NESDIS/STAR GOES-East ABI GEOCOLOR

Conditions as of 11 am CDT Thu June 17

Maximum Sustained Winds... 20 kt

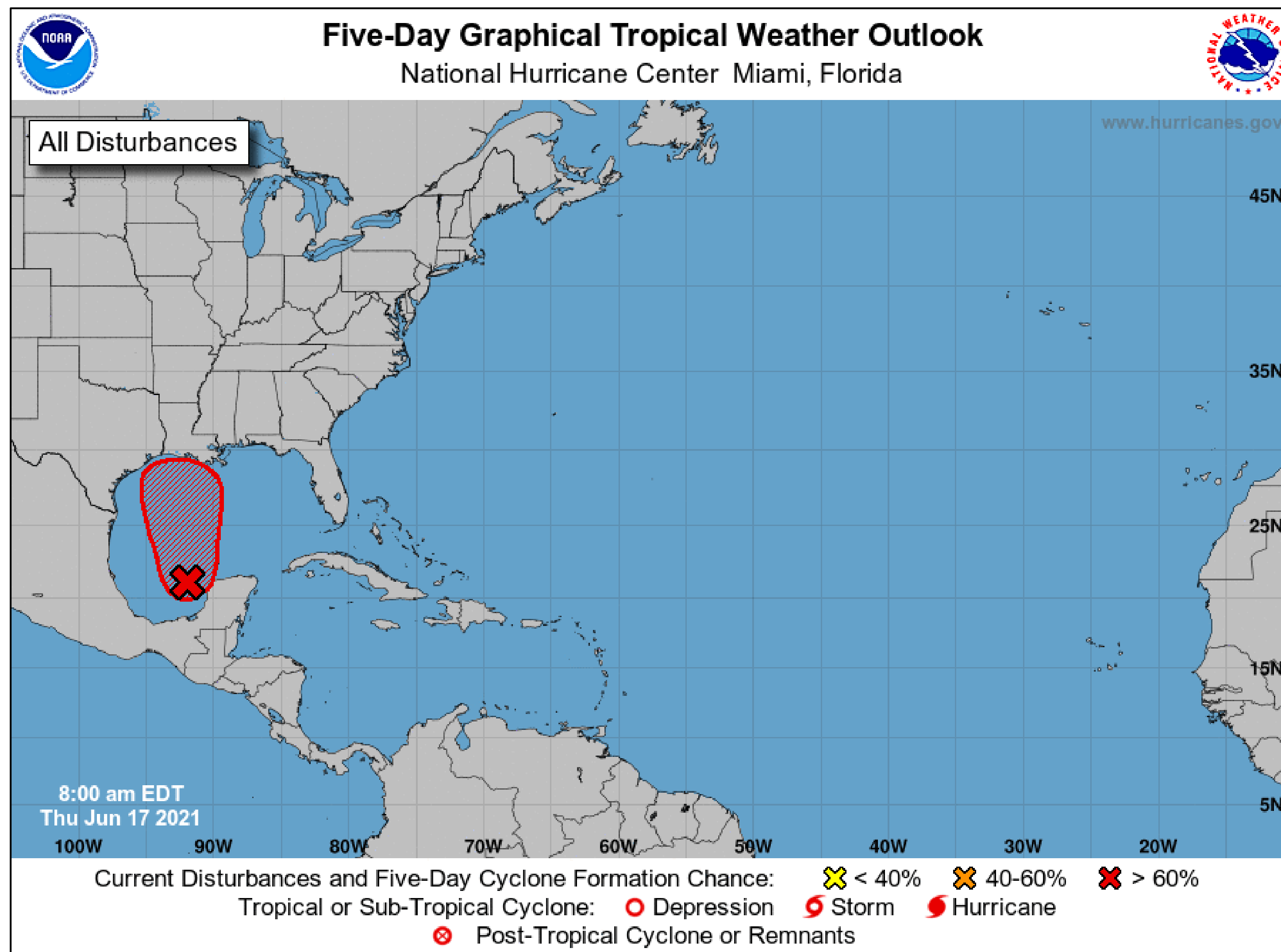
Seas: Less than 8 ft

Tropical Weather Outlook

Invest 92L



Tropical Analysis and Forecast Branch
NWS National Hurricane Center



- A broad area of low pressure over the southwestern Gulf of Mexico is producing widespread but disorganized cloudiness, showers, and thunderstorms.
- This system is expected to move northward, and a tropical or subtropical depression is likely to form over the west-central Gulf of Mexico tonight or early Friday.
- Heavy rains should also begin to affect portions of the northern Gulf Coast on Friday.
- * Formation chance through 48 hours...high...90 percent.
- * Formation chance through 5 days...high...90 percent.
- **Reminder:** *The hatched area represents a possible development area, not the system's path after development occurs.*

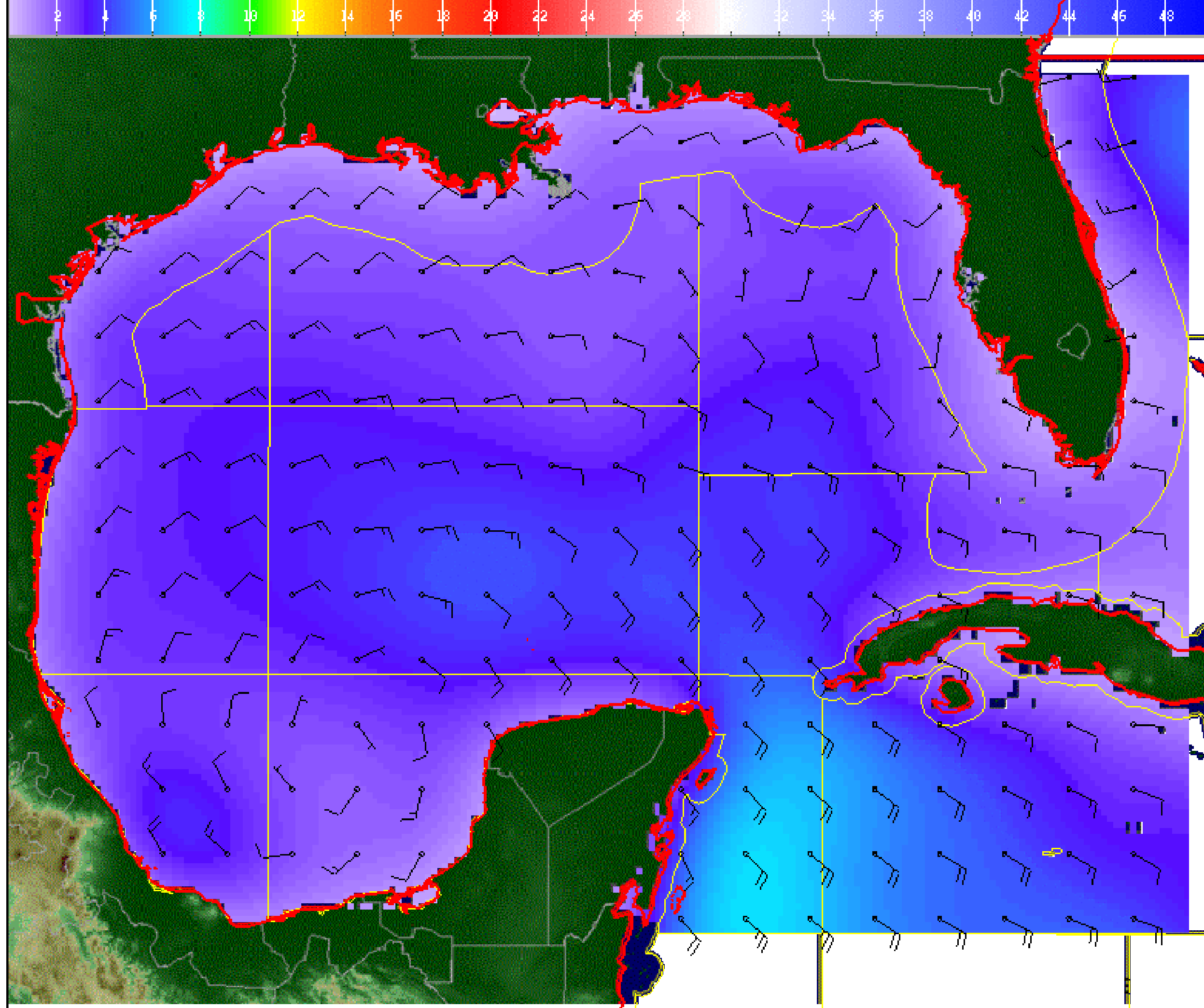
Wind And Waves

Invest 92L



Tropical Analysis and Forecast Branch
NWS National Hurricane Center

Valid 17 Jun 2021 1200 GMT



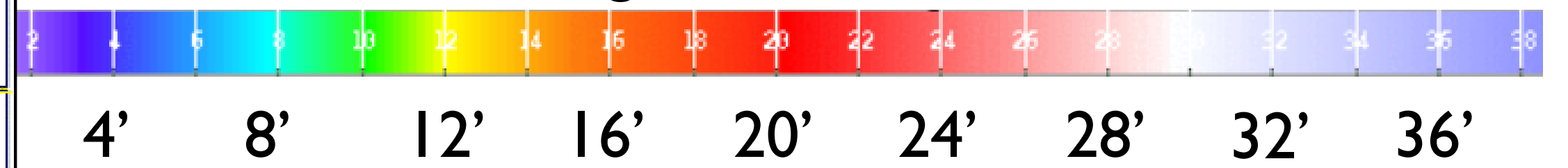
Current Conditions

7am CDT Thu 6/17

Peak Winds: 20 kt

Peak Seas: 6 ft

■ Wave heights are in feet



NHC/TAFB Gridded Marine Forecasts

6/17/2021 11:33 AM

www.nhc.noaa.gov

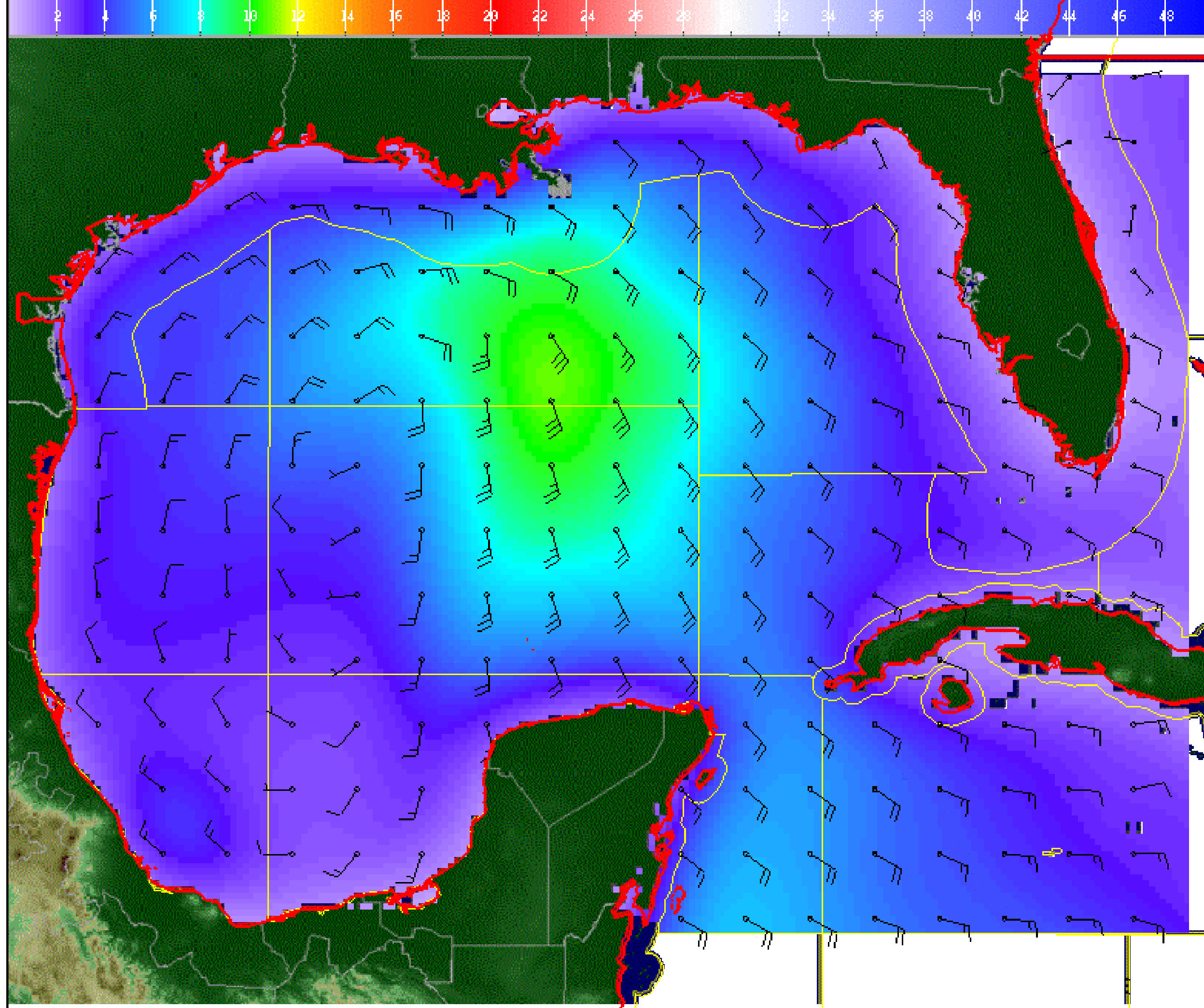
Wind And Waves

Invest 92L



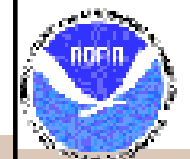
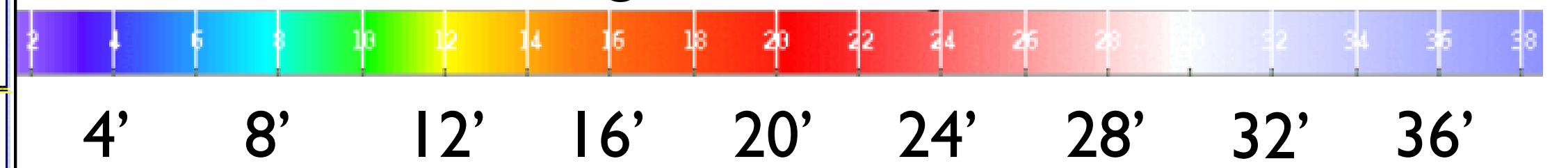
Tropical Analysis and Forecast Branch
NWS National Hurricane Center

Valid 18 Jun 2021 1200 GMT



24 Hour Forecast
7am CDT Fri 6/18
Peak Winds: 30 kt
Peak Seas: 10 ft

■ Wave heights are in feet



NHC/TAFB Gridded Marine Forecasts



6/17/2021 11:33 AM

www.nhc.noaa.gov

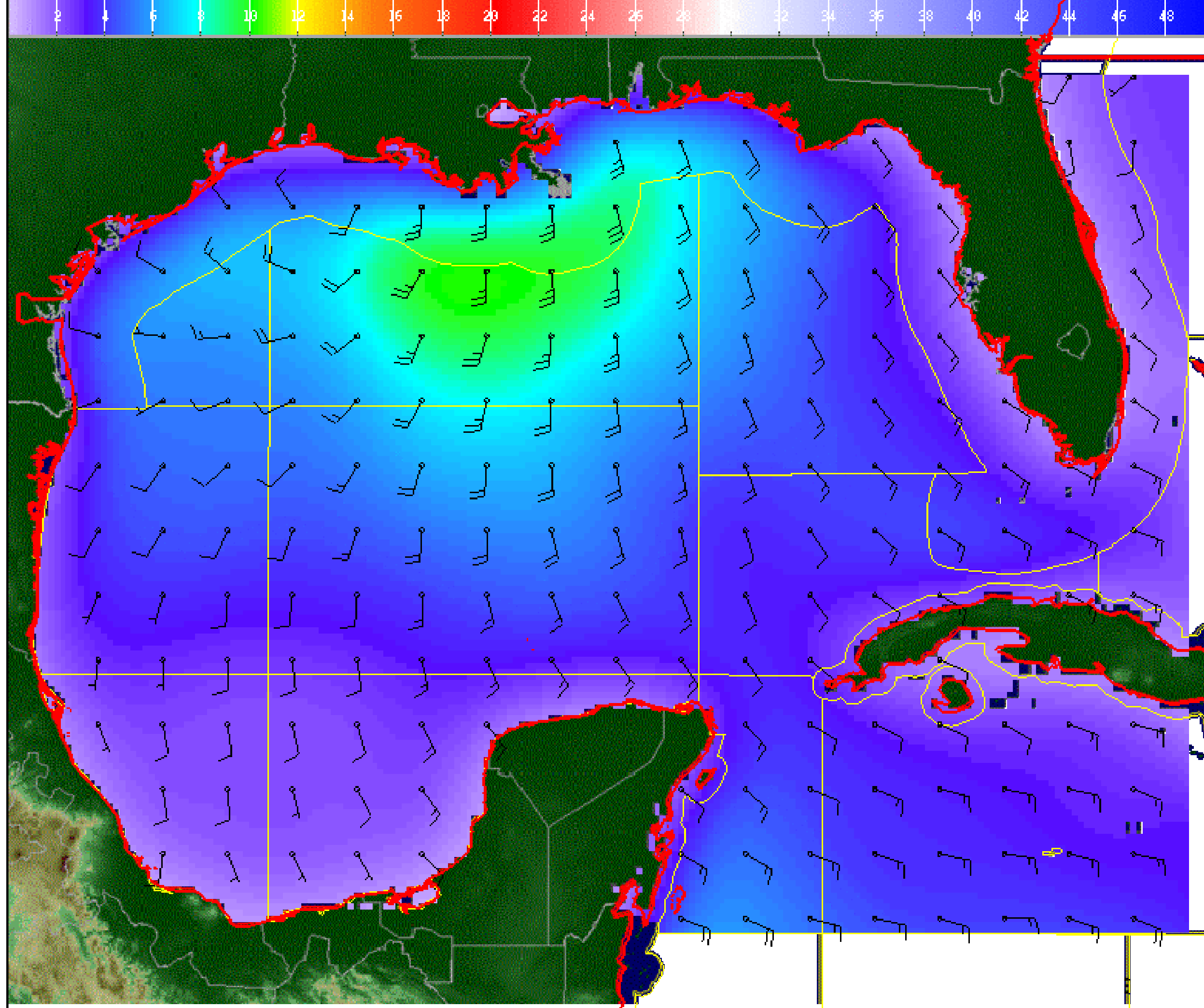
Wind And Waves

Invest 92L



Tropical Analysis and Forecast Branch
NWS National Hurricane Center

Valid 19 Jun 2021 1200 GMT



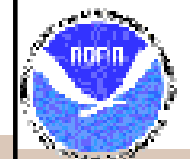
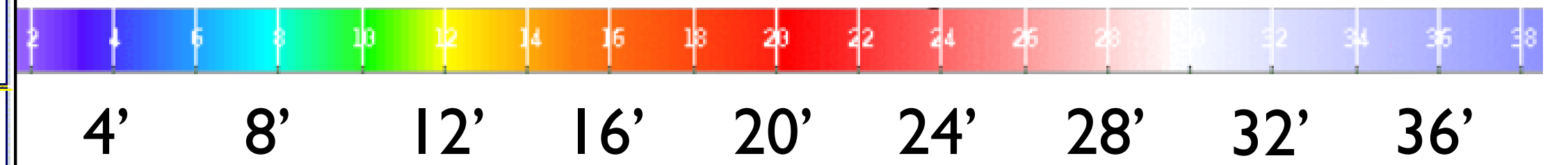
48 Hour Forecast

7am CDT Sat 6/19

Peak Winds: 30 kt

Peak Seas: 10 ft

■ Wave heights are in feet



NHC/TAFB Gridded Marine Forecasts



6/17/2021 11:33 AM

www.nhc.noaa.gov

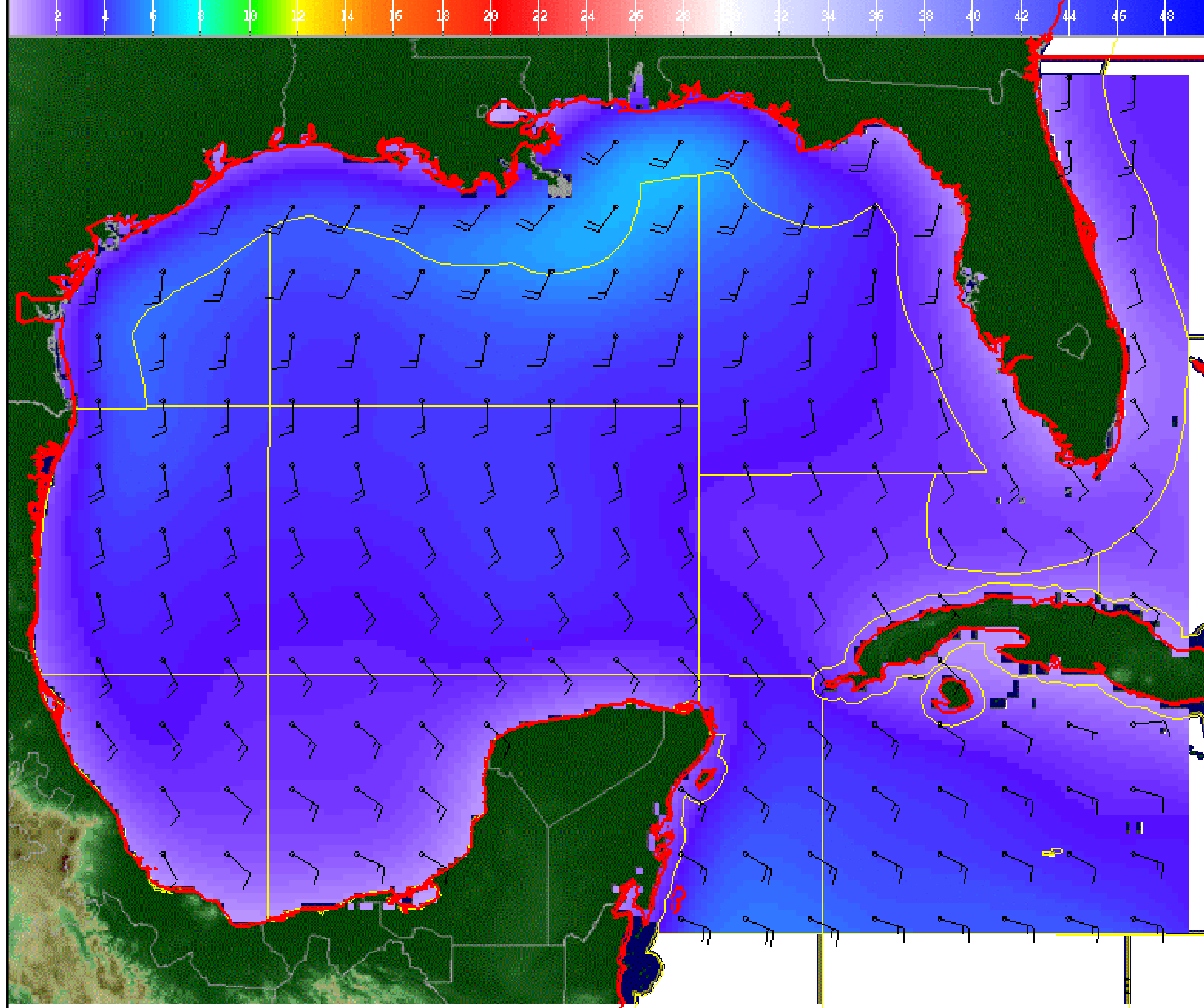
Wind And Waves

Invest 92L



Tropical Analysis and Forecast Branch
NWS National Hurricane Center

Valid 20 Jun 2021 1200 GMT



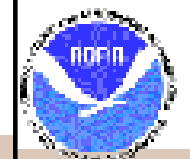
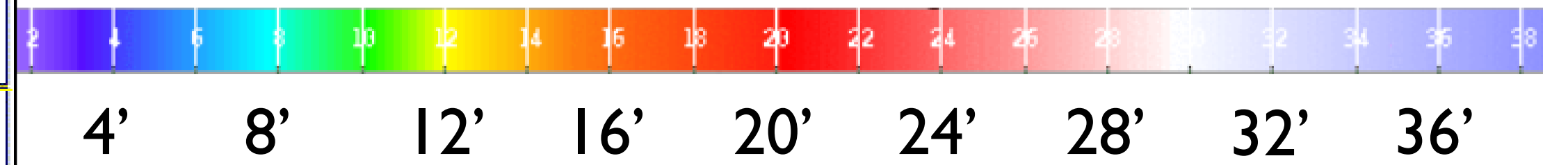
72 Hour Forecast

7am CDT Sun 6/20

Peak Winds: 25 kt

Peak Seas: 8 ft

■ Wave heights are in feet



NHC/TAFB Gridded Marine Forecasts



6/17/2021 11:33 AM

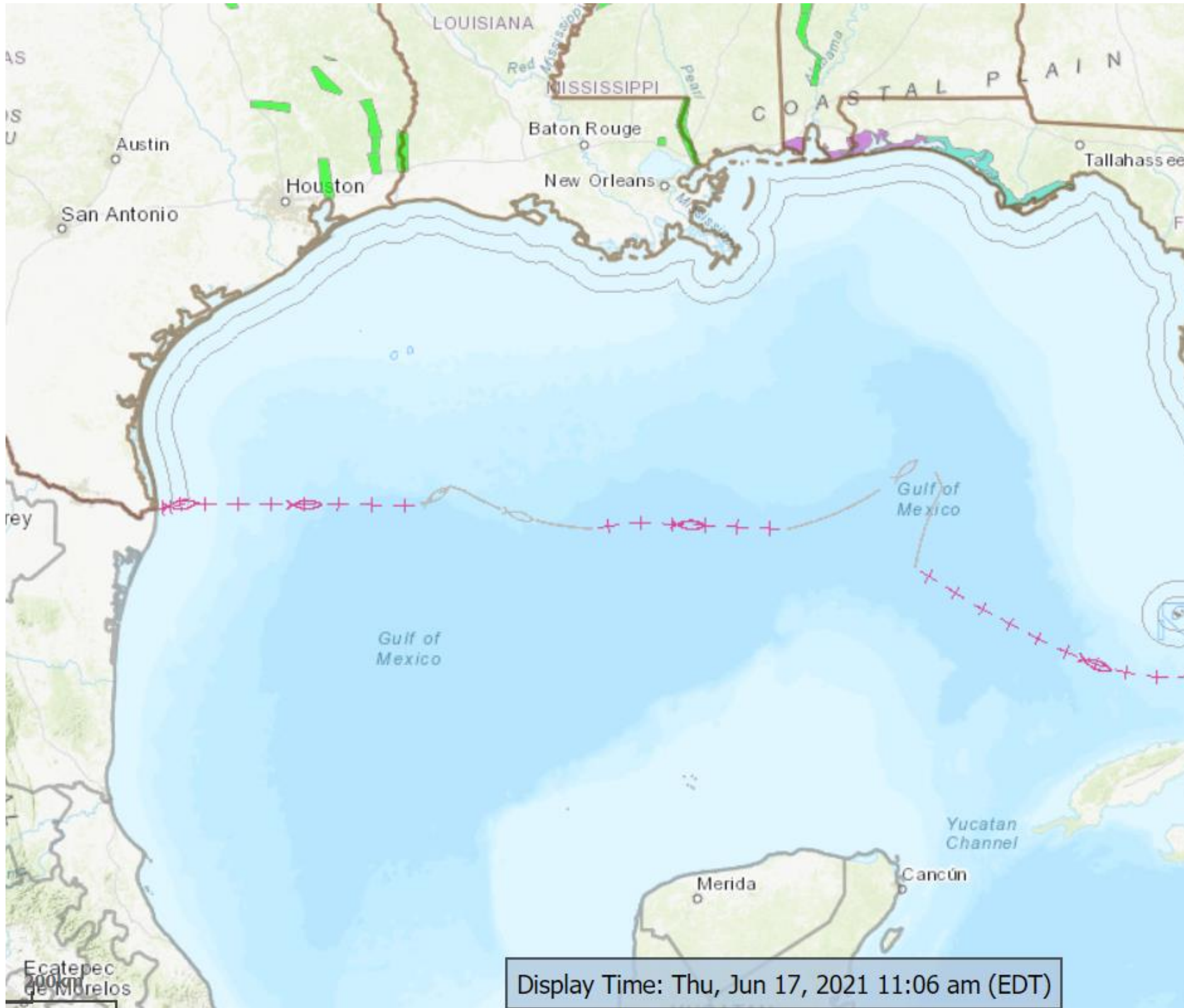
www.nhc.noaa.gov

Hazards Map

Invest 92L



Tropical Analysis and Forecast Branch
NWS National Hurricane Center



- High Surf Advisory
- Rip Current Statement
- Beach Hazards Statement
- Flood Warning (Point)

- No gale or tropical storm warnings currently
- Could change later today

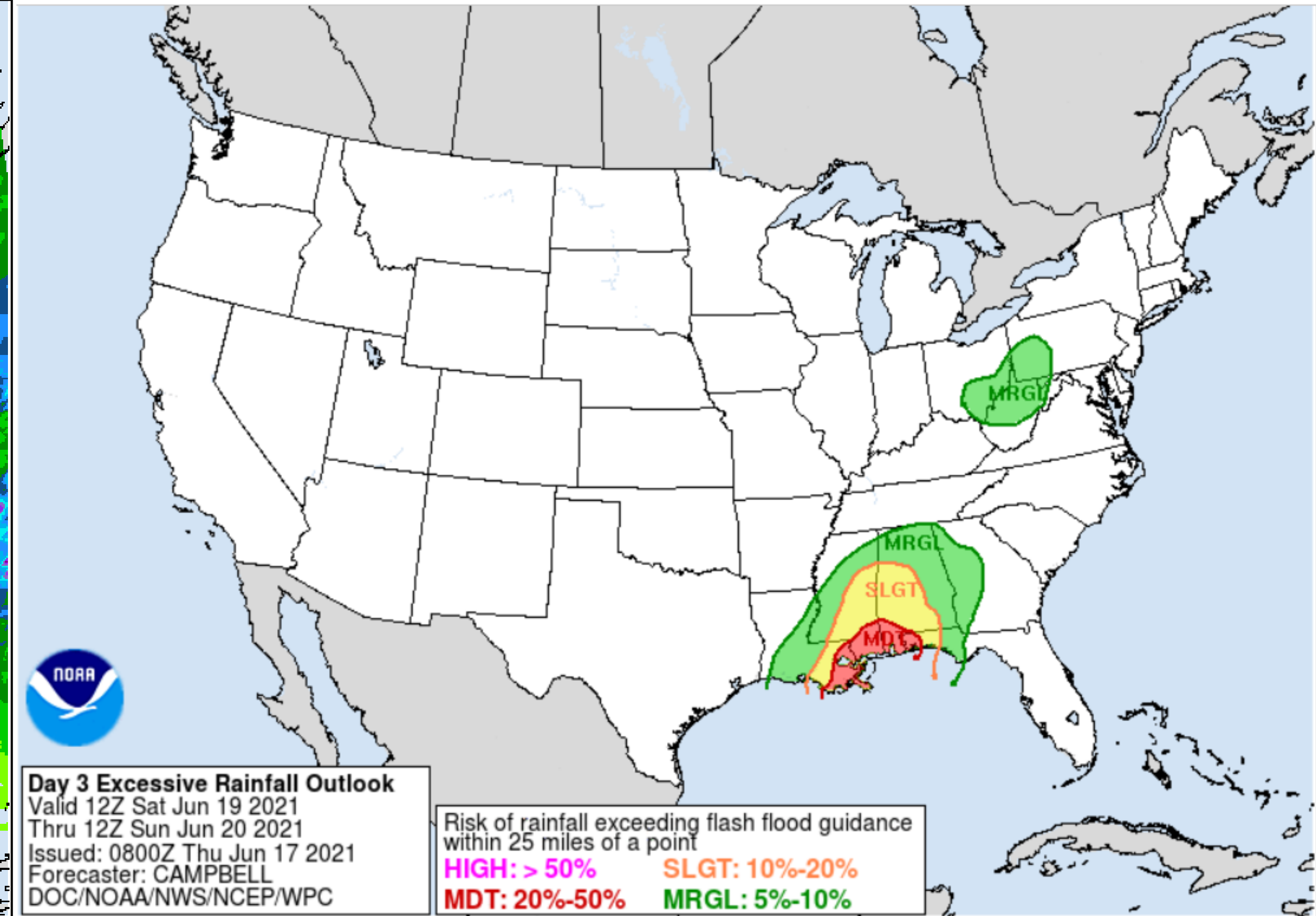
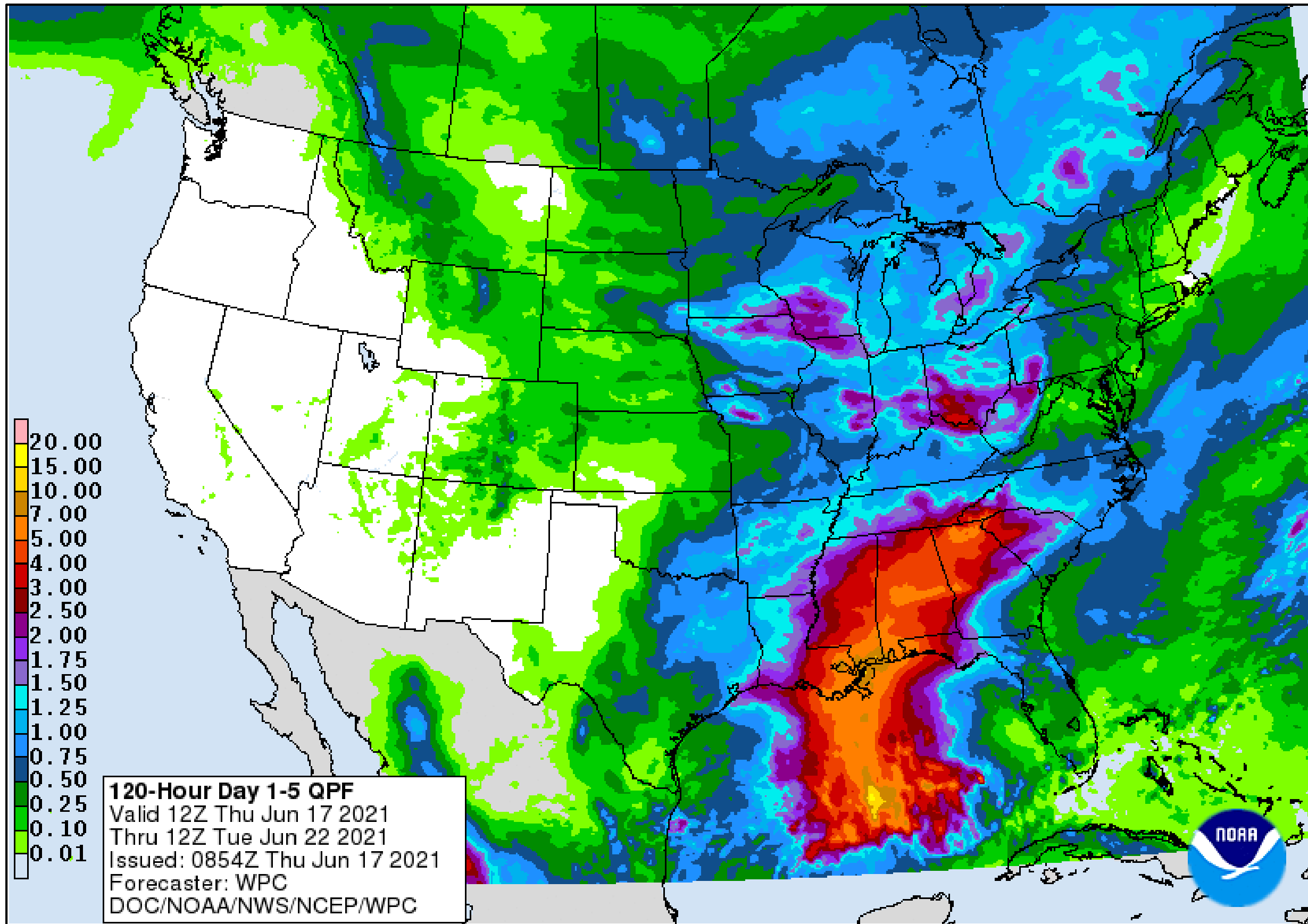
Expected Storm Total Rainfall and Chance of Rainfall Flooding



Tropical Analysis and Forecast Branch
NWS National Hurricane Center

Invest 92L

Images from NWS Weather Prediction Center



- Total rainfall in inches through Mon night

Risk of rainfall exceeding flash flood guidance within 25 miles of a point

HIGH: > 50% **SLGT: 10%-20%**
MDT: 20%-50% **MRGL: 5%-10%**

Valid 7am Sat – 7am Sun

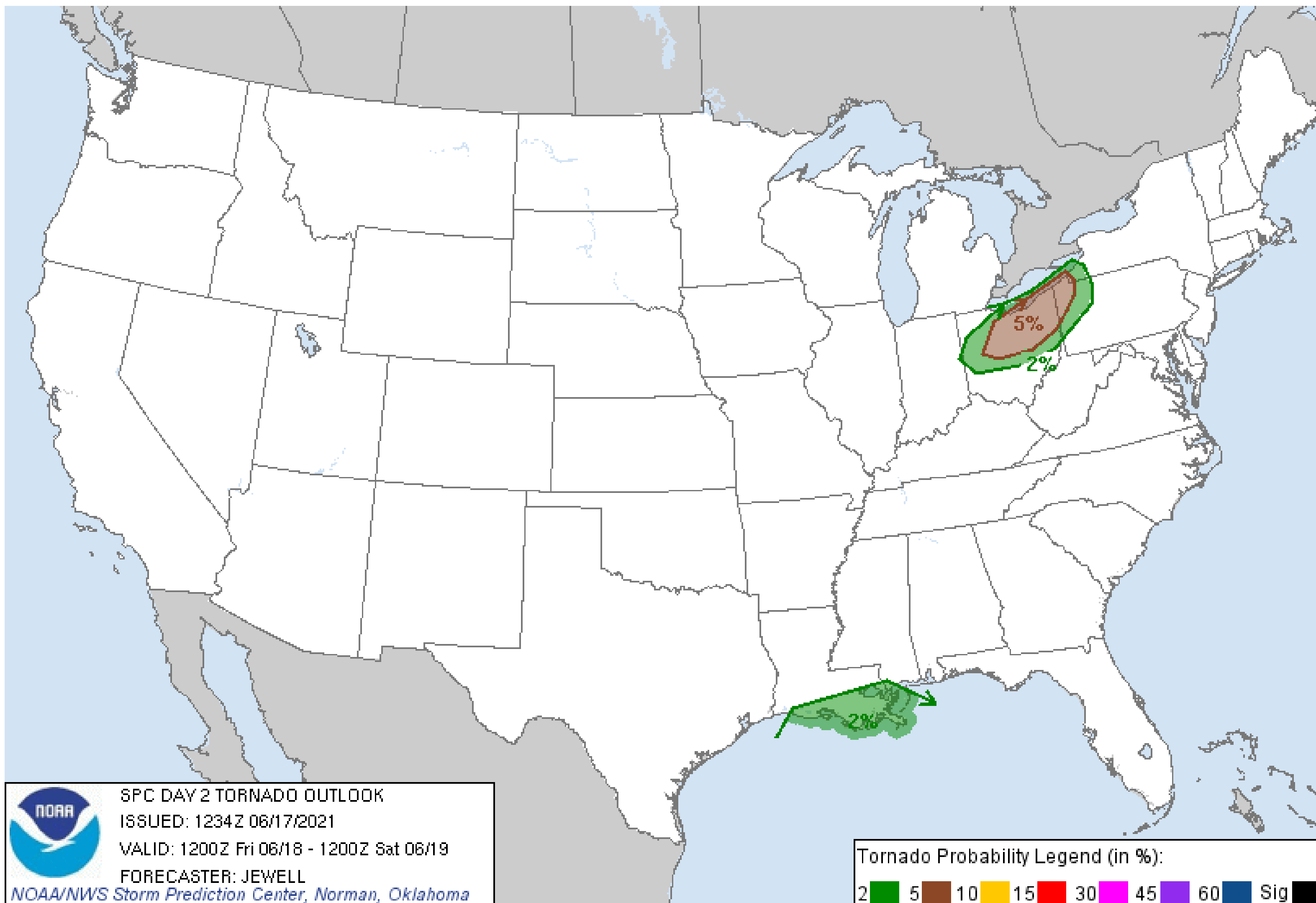
Tornado Outlook – Day 2



Tropical Analysis and Forecast Branch
NWS National Hurricane Center

Invest 92L

Image from NWS Storm Prediction Center



- Low chance of isolated tornadoes
- Valid 7am Fri – 7 am Sat



- Invest likely to become tropical/subtropical depression or storm tonight or early Friday
- System likely to make landfall sometime between late Fri night and early Sat evening
- Winds are forecast to reach 30 kt, but this could increase
 - Chance of tropical storm winds around 30% for individual coastal locations for Louisiana, Mississippi, Alabama and the extreme western Florida Panhandle
- Seas are forecast to peak near 10-12 ft, but this too could increase
- Rainfall 4-8 inches (isolated higher totals) in Louisiana, Mississippi, Alabama and NW Florida



INVEST 92L BRIEFING

You can contact the Tropical Analysis and Forecast Branch at
305-229-4424

*The Next Briefing Will Be:
Friday | 1:00 AM CDT*

You can always find get the latest graphics and information for this storm at www.hurricanes.gov



NHC_TAFB

www.nhc.noaa.gov