

IMPACTS FOR D8 (through next 5 days)

Winds – High

Storm Surge – High

Rainfall/Flash Flooding – High

Tornadoes – Low

Waves - High

INVEST 99L BRIEFING

9:00 AM CDT

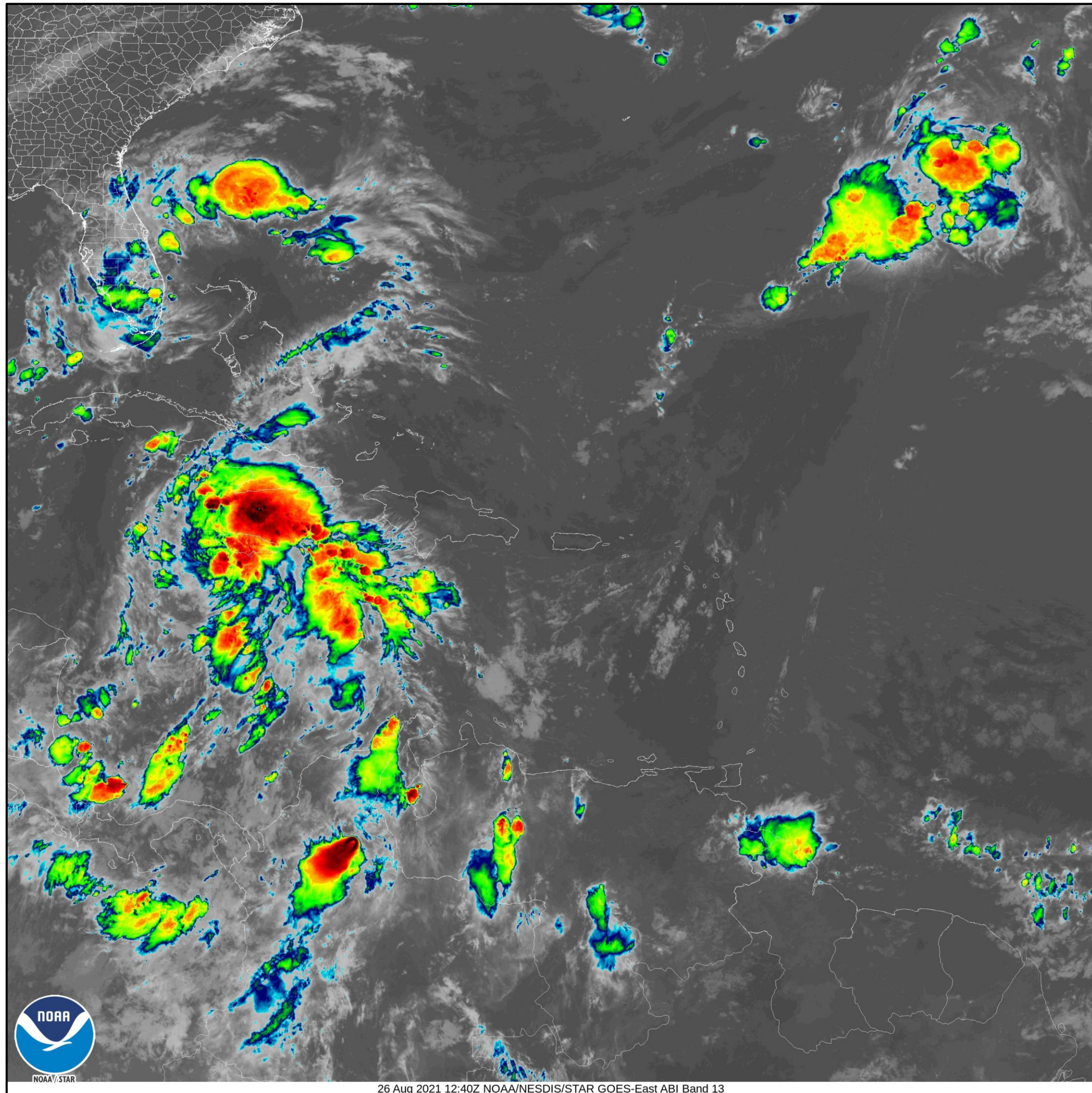
Thursday, August 26, 2021

Prepared by:

Chris Landsea

*Tropical Analysis and Forecast Branch
NWS National Hurricane Center*





...Disturbance expected to develop into a tropical depression or storm later today...

Summary of 700 CDT Information

Location... 16.5N 79.0W

135 NM south-southwest of Jamaica

Maximum Sustained Winds... 30 kt

Present Movement...NW at 14 kt

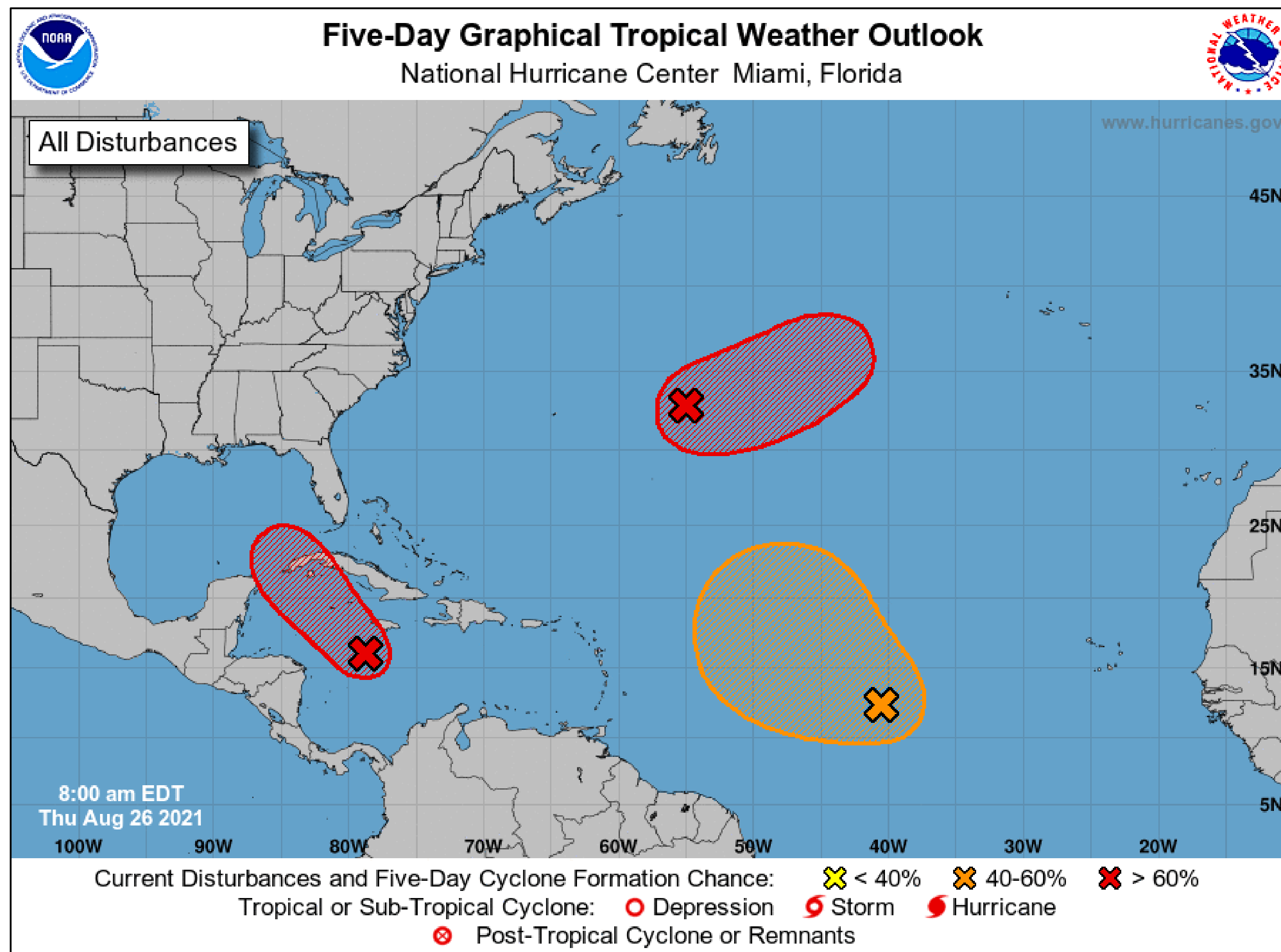
Peak Seas 10 ft

Tropical Weather Outlook

Invest 99L



Tropical Analysis and Forecast Branch
NWS National Hurricane Center



- Showers and thunderstorms continue to show signs of organization in association with a broad area of low pressure located over the west-central Caribbean Sea about 150 miles south-southwest of Jamaica.
- Environmental conditions remain conducive for additional development, and a tropical depression or tropical storm is expected to form later today or tonight.
- The system is expected to enter into the Gulf of Mexico Friday night and continue moving northwestward toward the central or northwestern U.S. Gulf coast, potentially bringing dangerous impacts from storm surge, wind, and heavy rainfall to portions of the coasts of Texas, Louisiana, Mississippi, Alabama, and the Florida Panhandle by Sunday and Monday.
- However, uncertainty in the system's exact track and intensity remains large since the low is just beginning to form.
- * Formation chance through 48 hours...high...90 percent.

Wind Speed Probabilities and Time of Arrival



Tropical Analysis and Forecast Branch
NWS National Hurricane Center

Invest 99L

▪ TROPICAL STORM WINDS

- Pensacola – 20%
- Mobile – 30%
- Gulfport – 40%
- Stennis – 50%
- Buras – 60%
- New Orleans – 60%
- Morgan City – 70%
- Lafayette – 65%
- New Iberia – 65%
- Lake Charles – 55%
- Cameron – 60%
- Port Arthur – 45%
- Galveston – 35%
- Houston – 25%
- Freeport – 20%
- High Island – 35%

▪ HURRICANE WINDS

- Buras – 10%
- New Orleans – 10%
- Morgan City – 15%
- Lafayette – 15%
- New Iberia – 15%
- Lake Charles – 15%
- Cameron – 15%

▪ Time of Arrival

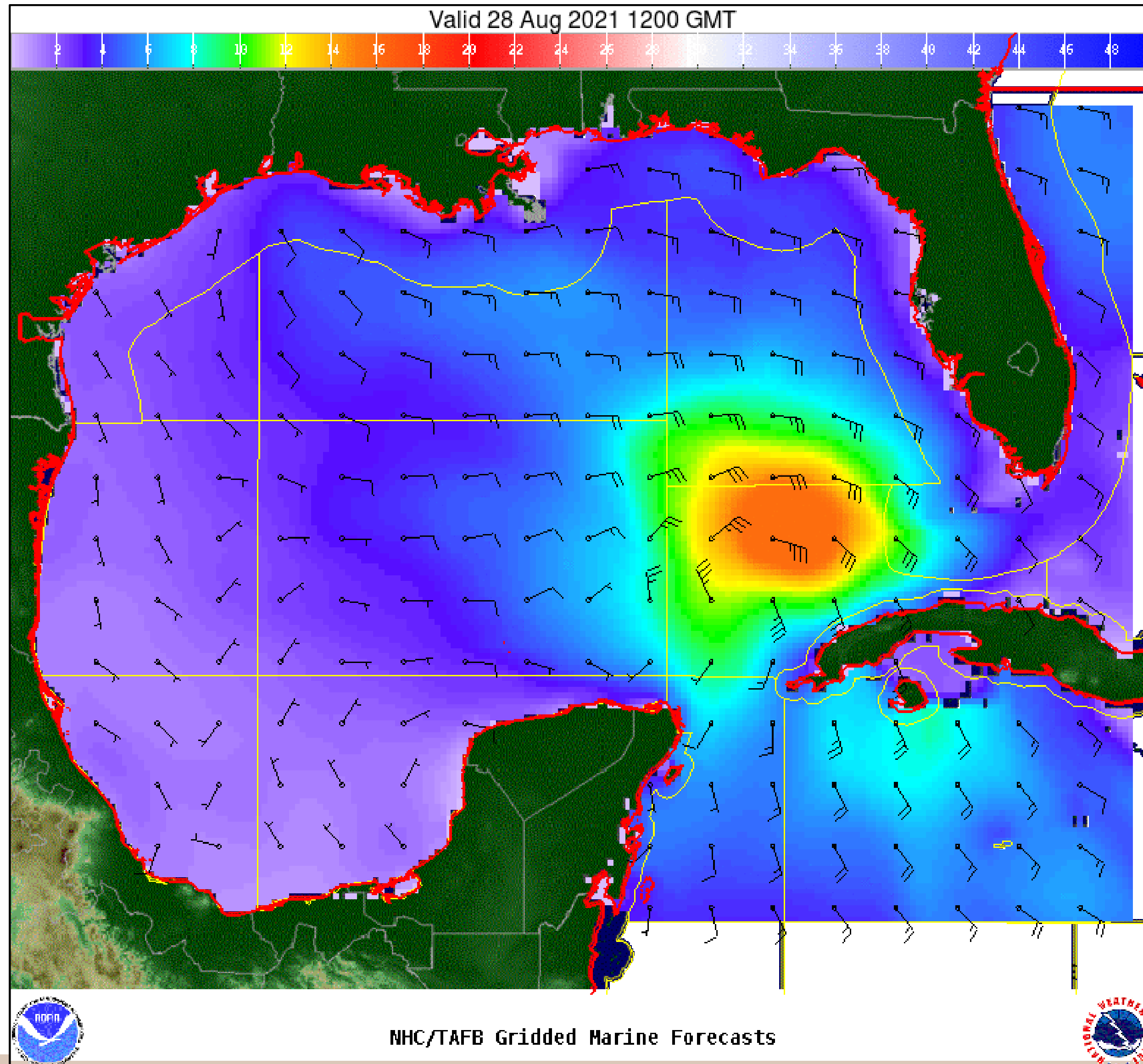
- NW Florida, Alabama, Mississippi, SE Louisiana – Sat Morning
- South Central Louisiana – Sat Noon
- SW Louisiana, Upper Texas – Sat Night

Wind And Waves

Invest 99L



Tropical Analysis and Forecast Branch
NWS National Hurricane Center



48 Hour Forecast

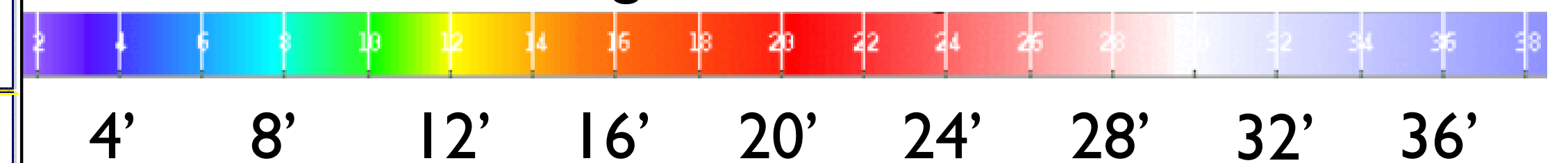
Saturday, 7am CDT, August 28th

Peak Winds: 45 kt

Peak Seas: 16 ft

Values of Winds and Waves likely to go up substantially once advisories commence.

■ Wave heights are in feet



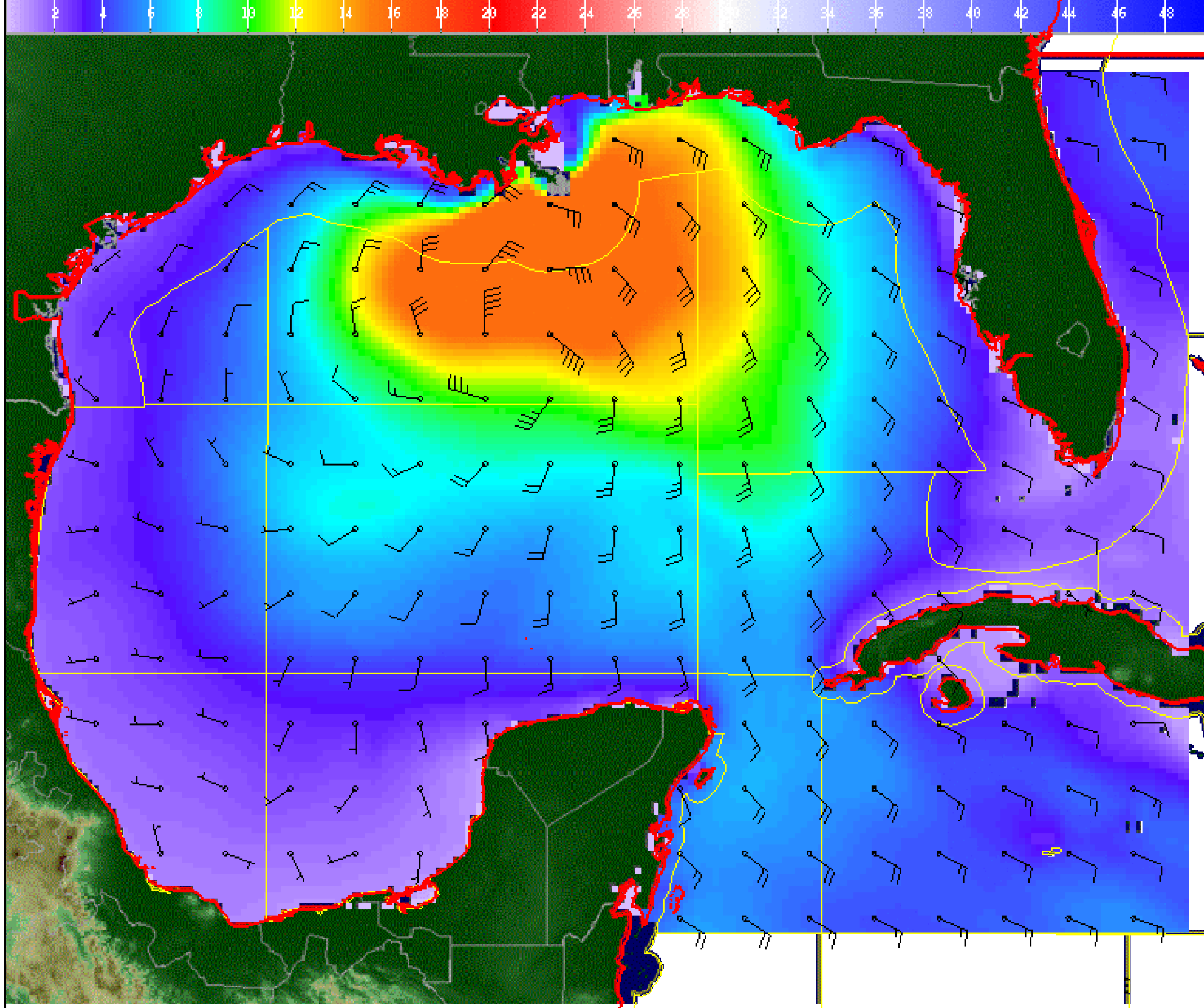
Wind And Waves

Invest 99L



Tropical Analysis and Forecast Branch
NWS National Hurricane Center

Valid 29 Aug 2021 1200 GMT



72 Hour Forecast

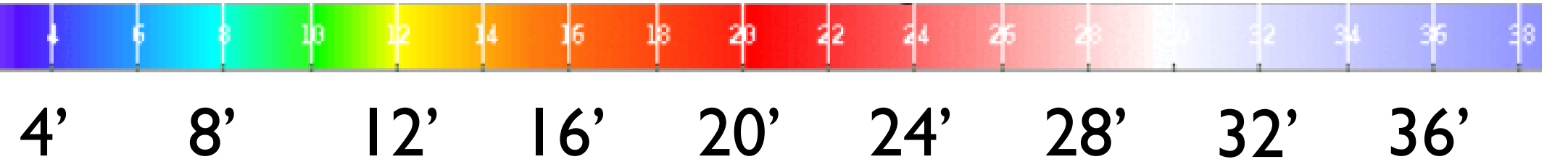
Sunday, 7am CDT, August 29th

Peak Winds: 45 kt

Peak Seas: 16 ft

Values of Winds and Waves likely to go up substantially once advisories commence.

■ Wave heights are in feet



NHC/TAFB Gridded Marine Forecasts

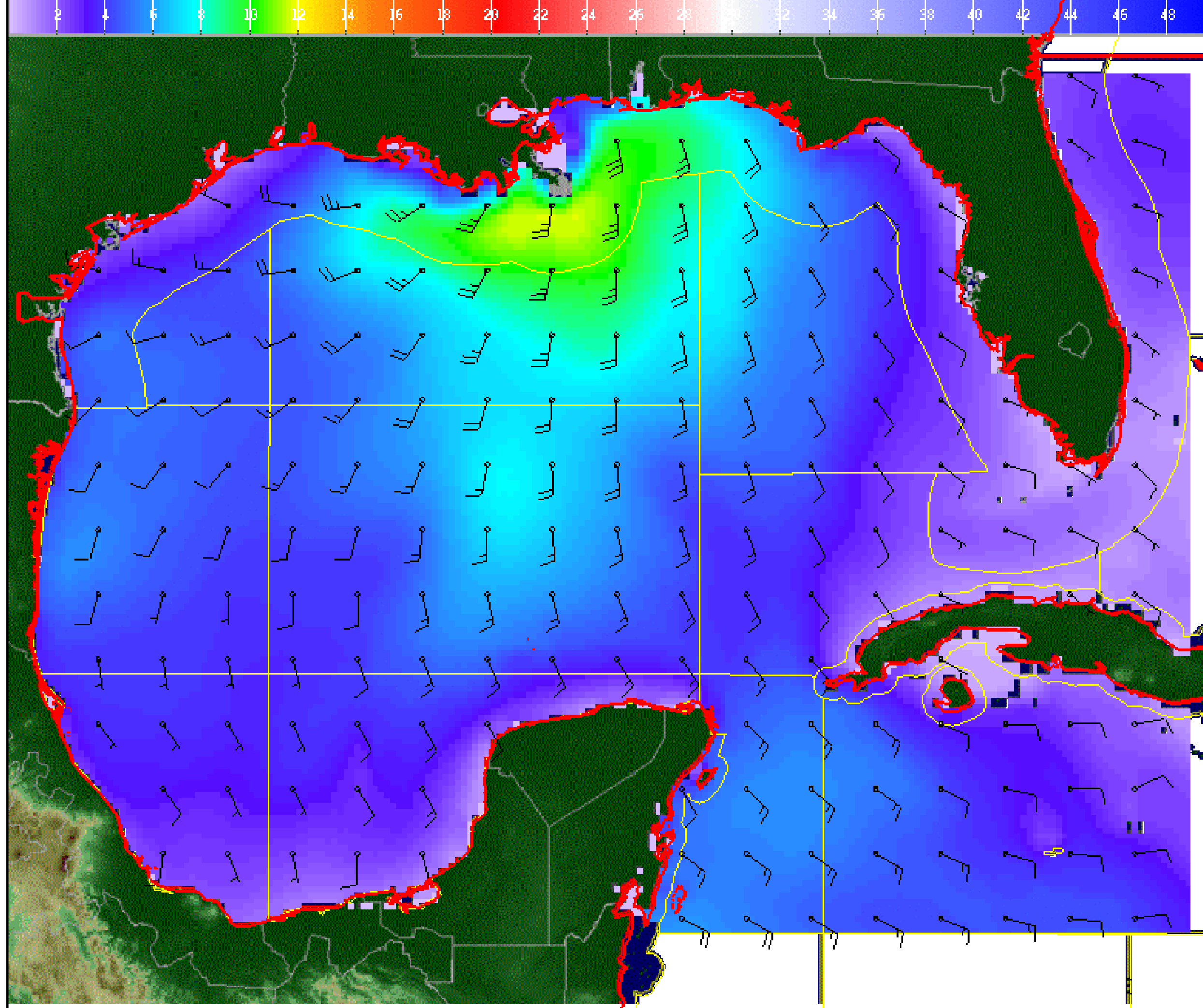
Wind And Waves

Invest 99L



Tropical Analysis and Forecast Branch
NWS National Hurricane Center

Valid 30 Aug 2021 1200 GMT



96 Hour Forecast

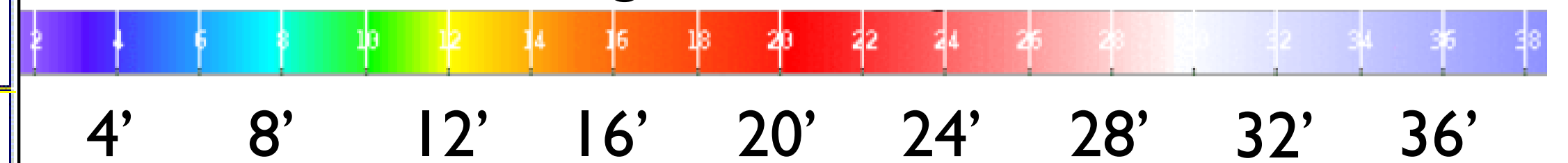
7am CDT, Monday, August 30th

Peak Winds: 30 kt

Peak Seas: 12 ft

Values of Winds and Waves likely to go up substantially once advisories commence.

■ Wave heights are in feet



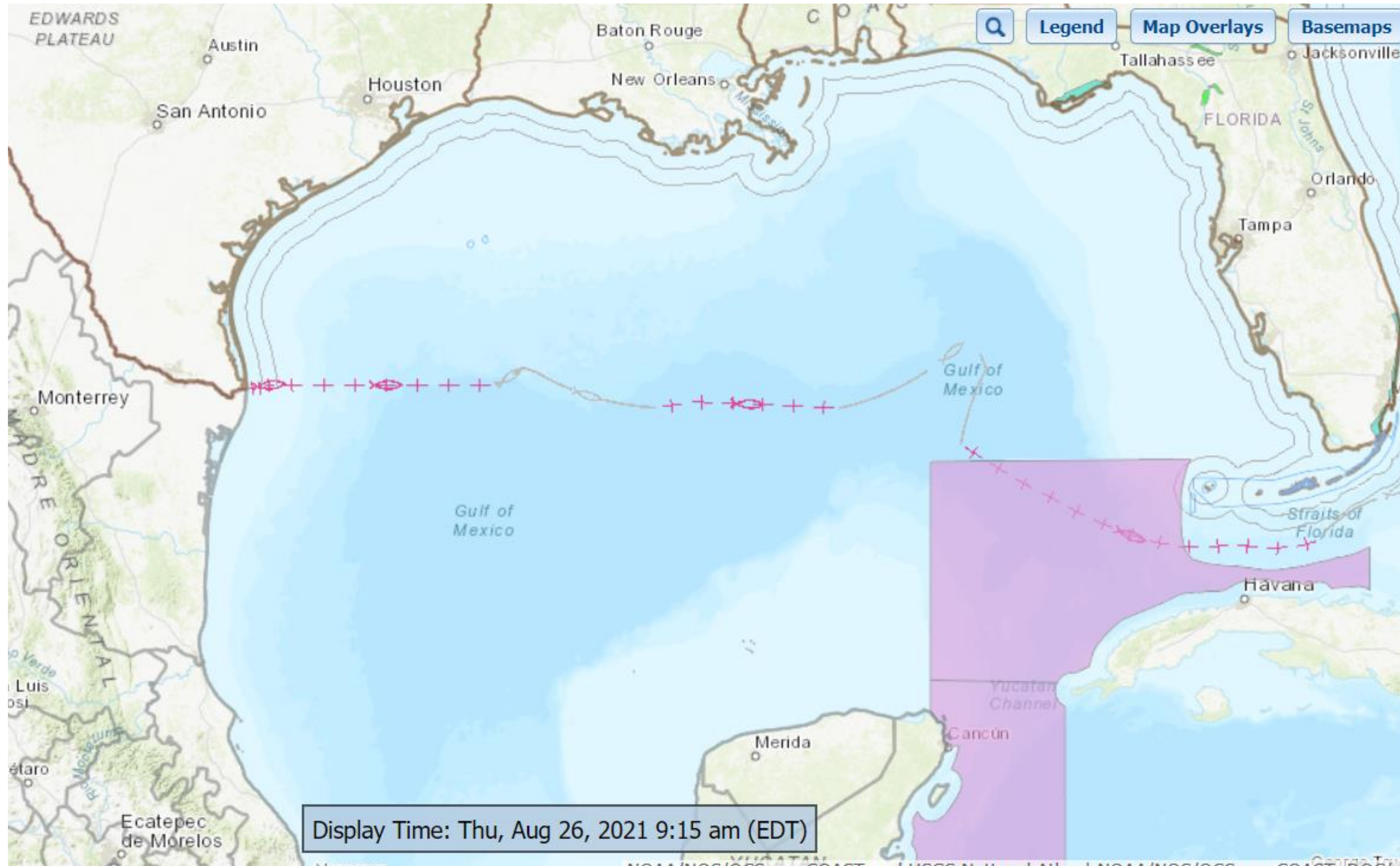
NHC/TAFB Gridded Marine Forecasts

Hazards Map

Invest 99L



Tropical Analysis and Forecast Branch
NWS National Hurricane Center



Display Time: Thu, Aug 26, 2021 9:15 am (EDT)

 **Gale Warning**

<https://nowcoast.noaa.gov/>

Potential Storm Surge

Invest 99L



Tropical Analysis and Forecast Branch
NWS National Hurricane Center

- **Storm Surge expected to be High Impact with salt-water flooding from a Hurricane – possibly a Major (Category 3) Hurricane – somewhere along the upper Texas, Louisiana, Mississippi, and/or Alabama coasts.**
- **MEOWs (Maximum Envelope of Water) graphics/files to be provided this afternoon.**

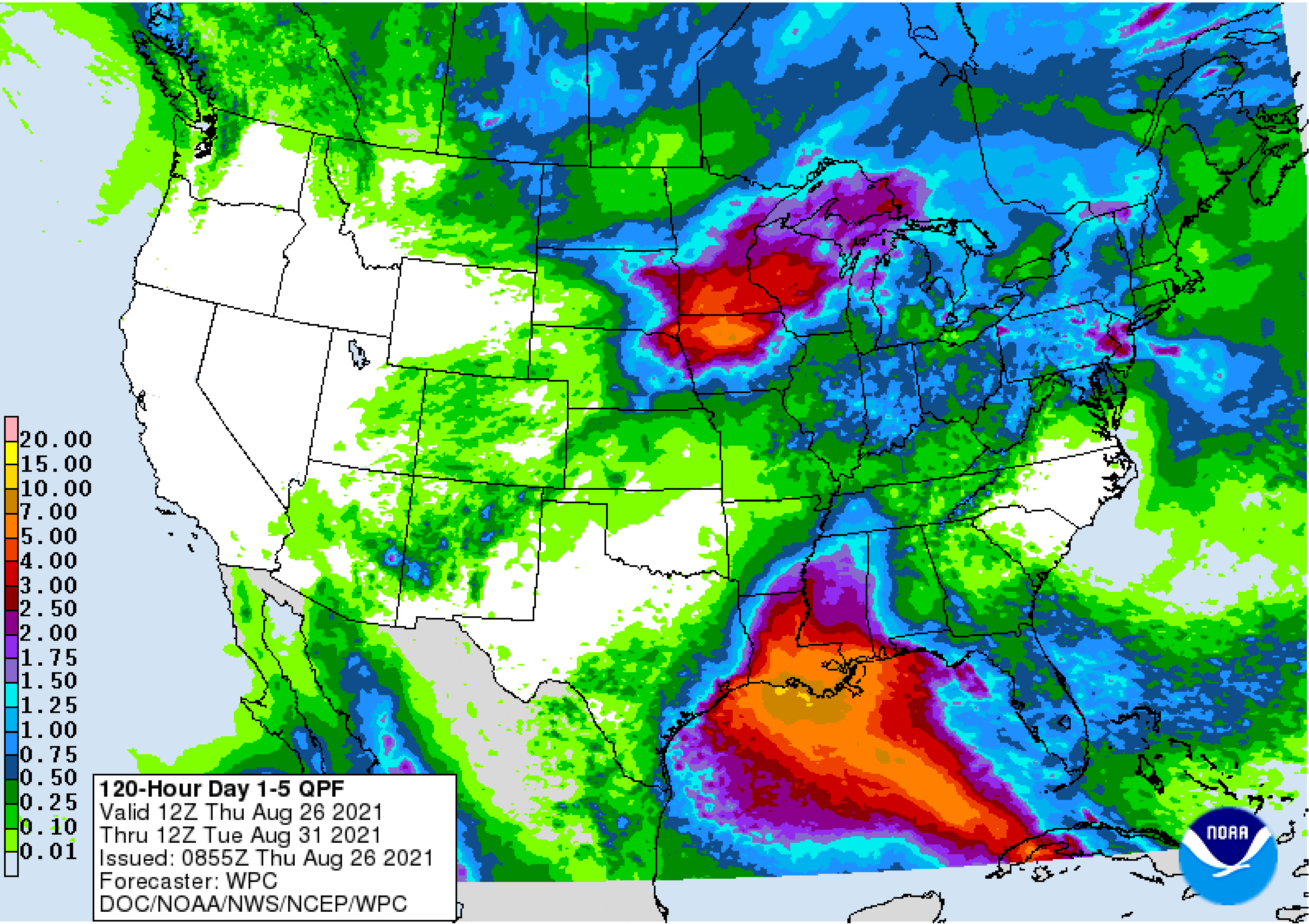
Expected Storm Total Rainfall



Tropical Analysis and Forecast Branch
NWS National Hurricane Center

Invest 99L

Images from NWS Weather Prediction Center



- Total rainfall in inches valid through Tuesday morning.

Key Messages

Invest 99L



Tropical Analysis and Forecast Branch
NWS National Hurricane Center

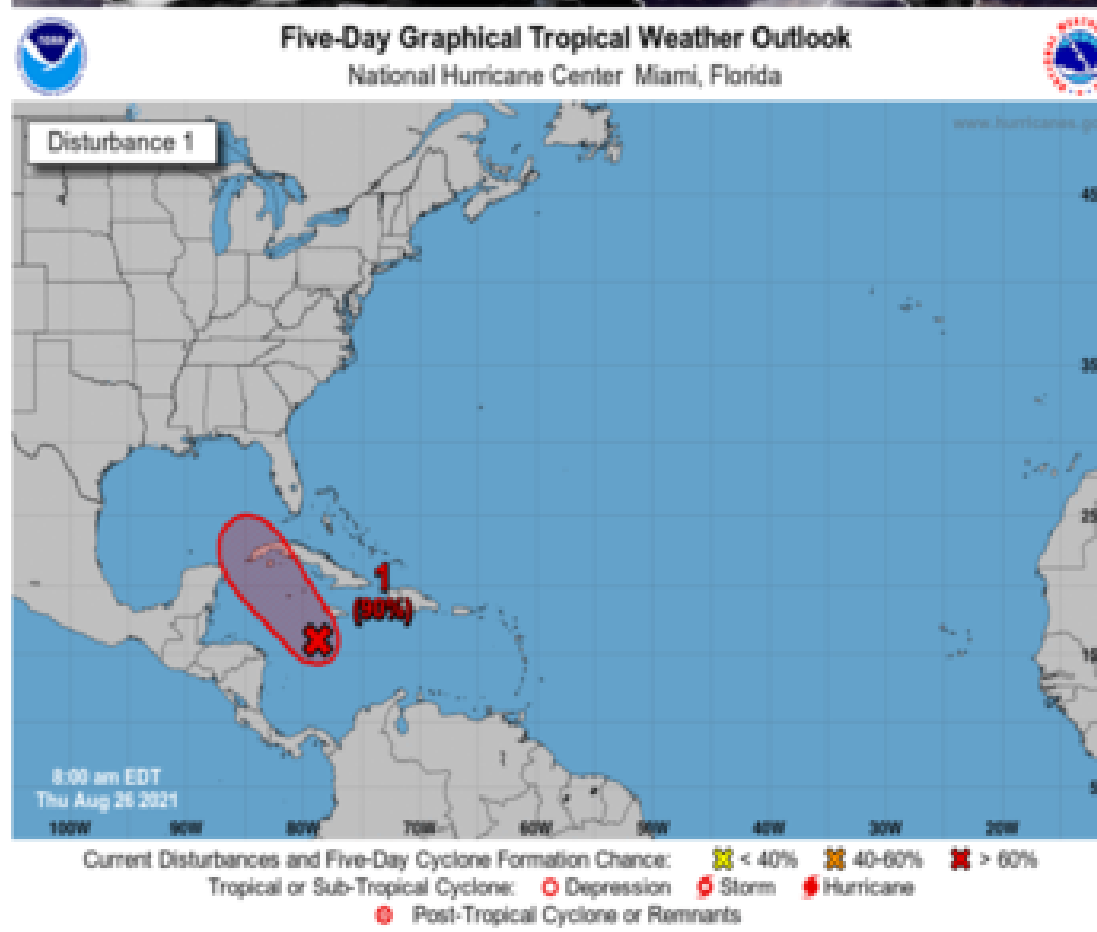
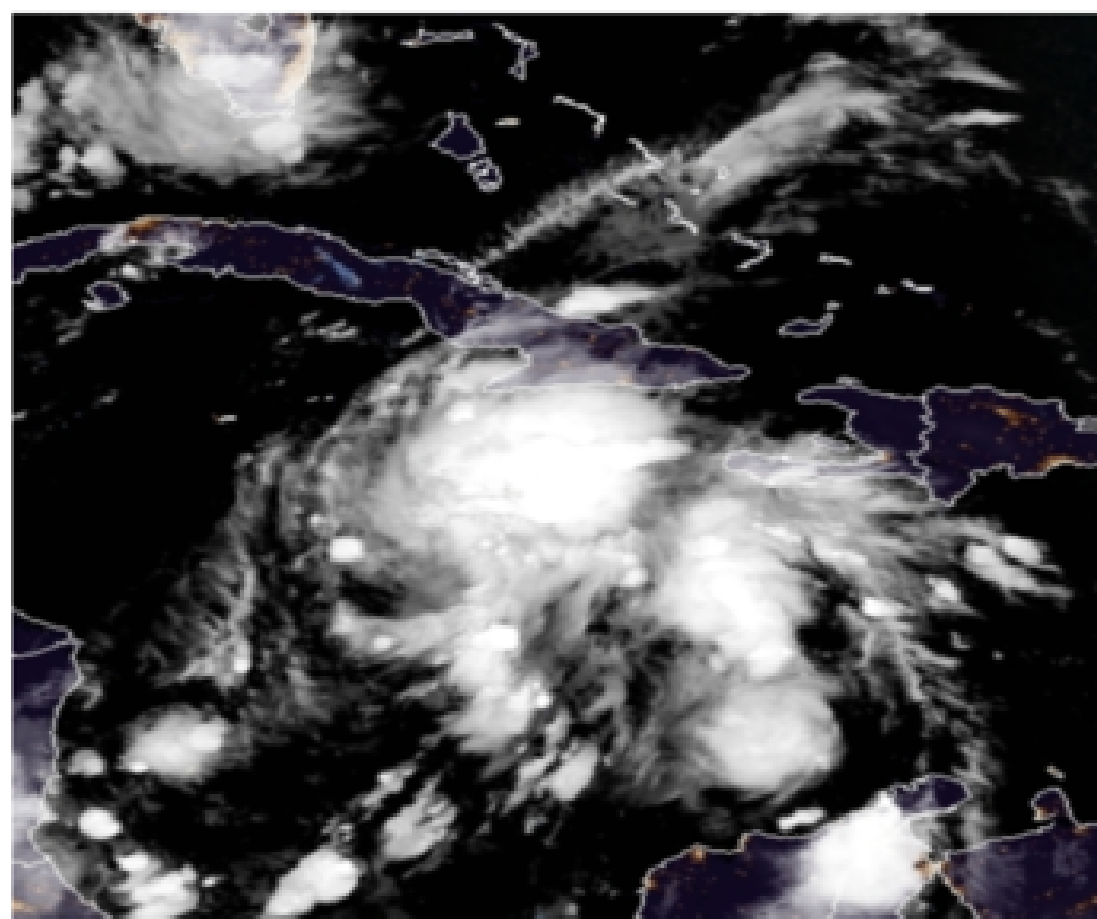


Key Messages for the disturbance in the west-central Caribbean Sea



08:00 AM EDT Thu Aug 26, 2021

1. A tropical depression or tropical storm is expected to form today or tonight over the northwestern Caribbean Sea and could bring tropical storm conditions to the Cayman Islands and western Cuba Friday and Friday night.
2. Heavy rainfall and flooding are possible across portions of Jamaica, the Cayman Islands, Cuba, and the Yucatan Peninsula today through Friday.
3. This system will enter the southeastern Gulf of Mexico this weekend, where conditions are expected to be favorable for additional strengthening. Dangerous impacts from storm surge, wind, and heavy rainfall are possible Sunday and Monday along portions of the northern Gulf Coast from the Florida Panhandle to the upper Texas coast, with the greatest risk along the coast of Louisiana. While uncertainty in the details of these impacts remains large since the system has yet to form, interests in these areas should closely monitor the progress of this system and ensure they have their hurricane plan in place.



For more information go to hurricanes.gov and weather.gov

IMPACTS FOR D8 (through next 5 days)

Winds – **High**

Storm Surge – **High**

Rainfall/Flash Flooding – **High**

Tornadoes – **Low**

Waves - **High**

- Marine Key Messages:
- Seas in the north central Gulf of Mexico ramp up quickly on Saturday afternoon with peak values currently near 16 ft
- Values likely to go much higher once advisories commence



INVEST 99L BRIEFING

You can contact the Tropical Analysis and Forecast Branch at
305-229-4424

*The Next Briefing Will Be:
Friday 9:00 AM CDT*

You can always find get the latest graphics and information for this storm at www.hurricanes.gov



NHC_TAFB

www.nhc.noaa.gov