

**IMPACTS FOR D8 (through 5 days)**

**Winds – High**

**Storm Surge – High**

**Rainfall/Flash Flooding – High**

**Tornadoes – Low to Moderate**

**Waves – High**

# Tropical Storm Laura & TD 14 Briefing



9:00 AM CDT  
Friday, August 21<sup>st</sup>, 2020

Prepared by:  
**Jeff Lewitsky**

*Tropical Analysis and Forecast Branch  
NWS National Hurricane Center*

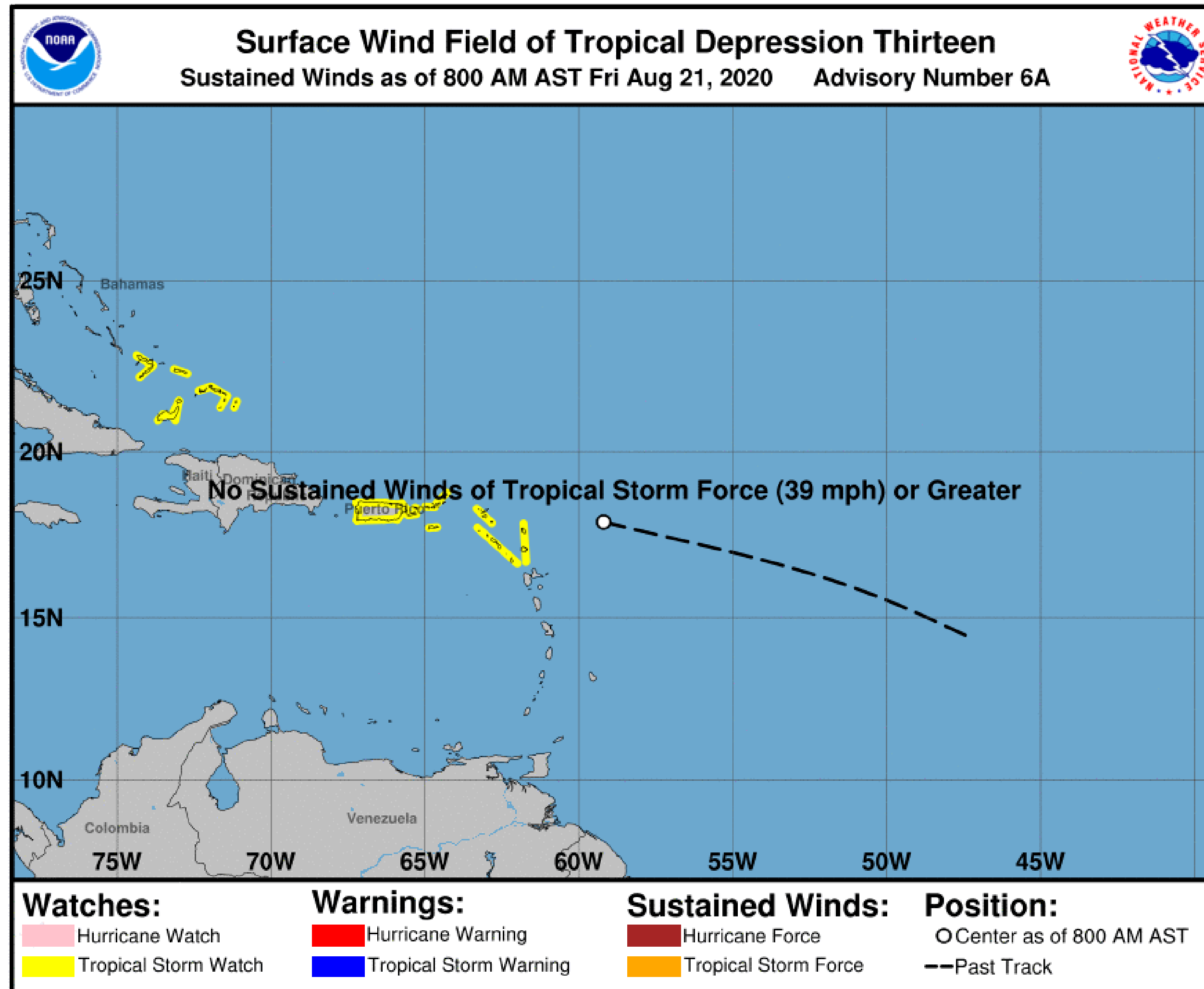


# Situation Overview

## Tropical Storm Laura



Tropical Analysis and Forecast Branch  
NWS National Hurricane Center



**...NOAA HURRICANE HUNTER AIRCRAFT FINDS THAT TD13 HAS STRENGTHENED TO TROPICAL STORM LAURA...**

Summary of 805 AM CDT...

LOCATION...17.0N 59.8W  
ABOUT 230 MI ESE OF THE NORTHERN LEEWARD ISLANDS

MAXIMUM SUSTAINED WINDS...45 MPH

PRESENT MOVEMENT...W OR 280 DEGREES  
AT 21 MPH

PEAK SEAS...12 FT

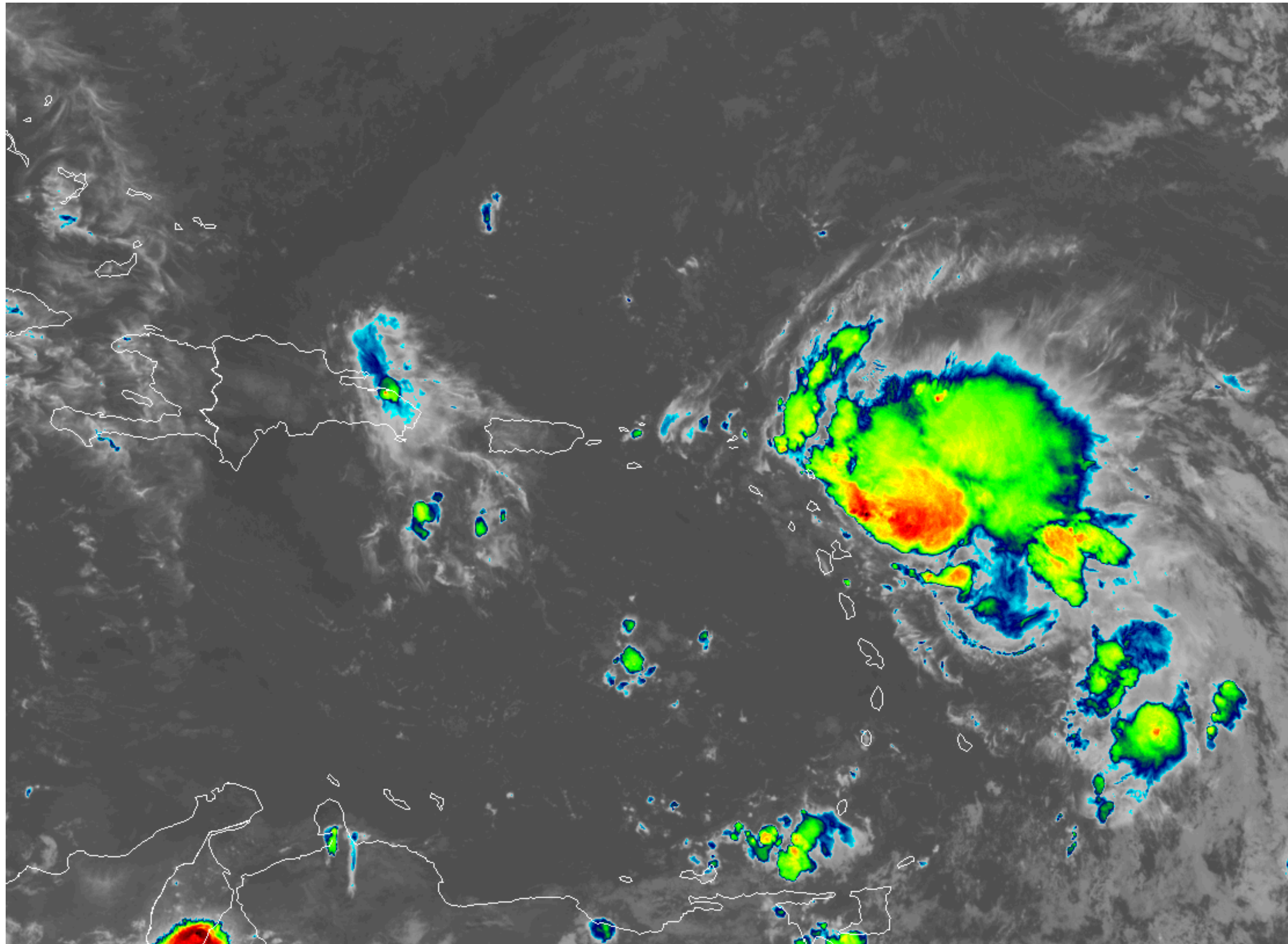


# Current Satellite View

Tropical Storm Laura



Tropical Analysis and Forecast Branch  
NWS National Hurricane Center



8/21/2020 9:47 AM

[www.nhc.noaa.gov](http://www.nhc.noaa.gov)

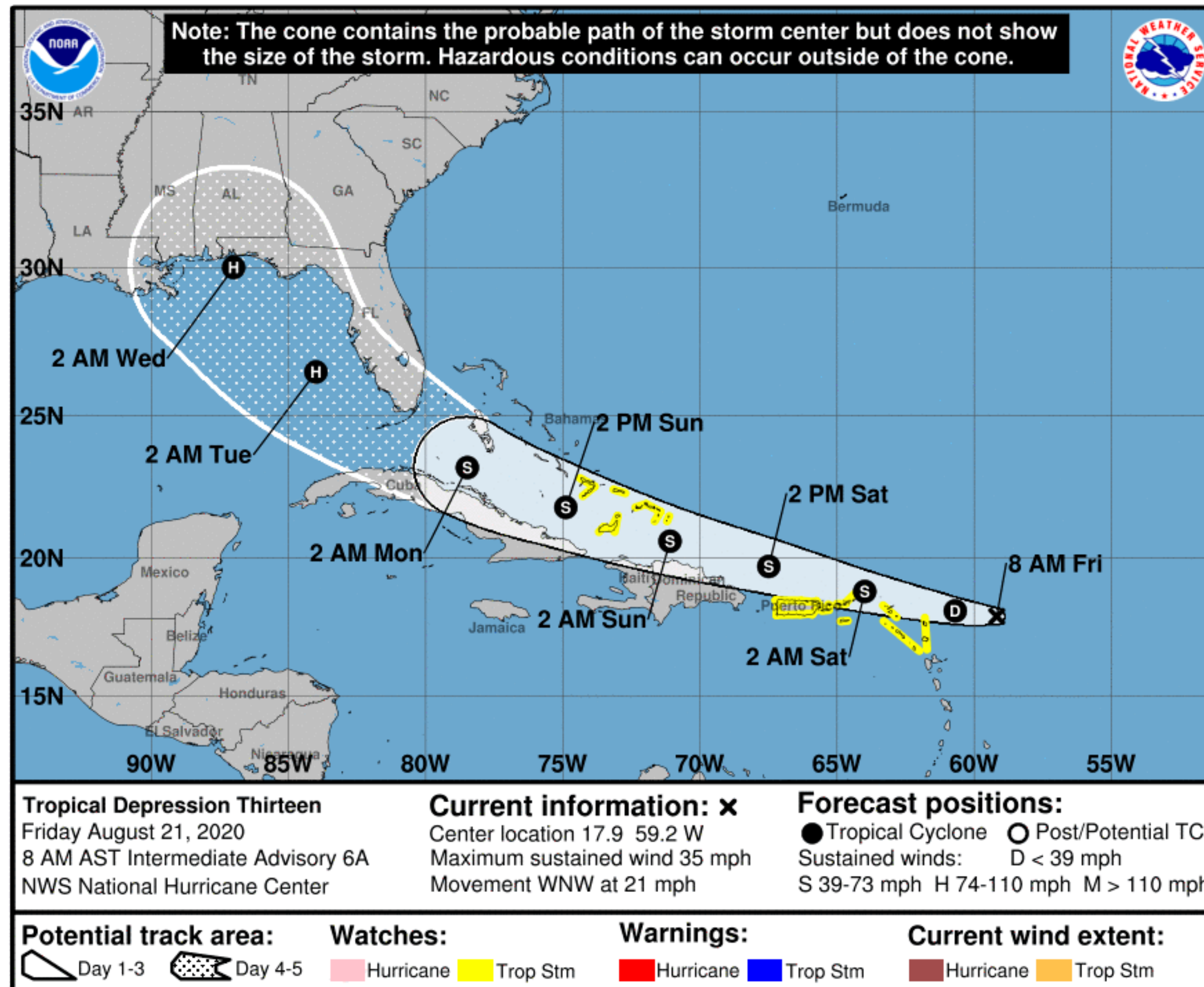


# Forecast Information

## Tropical Storm Laura



Tropical Analysis and Forecast Branch  
NWS National Hurricane Center



- Near the Florida Peninsula by early next week.
- Near Hurricane strength by early next week.
- Near the N central or NE Gulf of Mexico Days 4-5

\*\* Swaths are calculated using average track errors and actual track may be well inside, or possibly outside the potential track areas indicated.

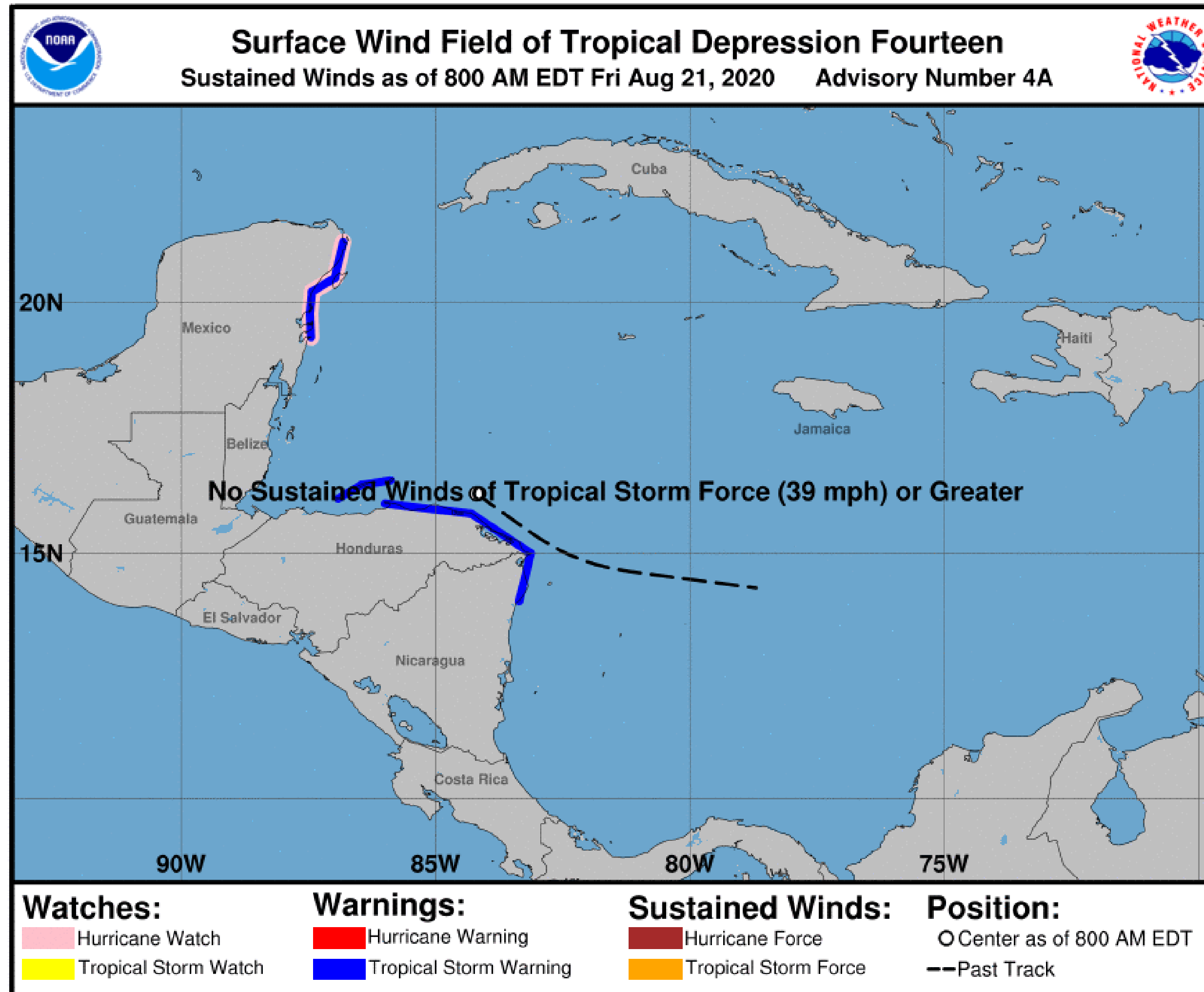
**NOTE:** Do not focus on the exact track. Impacts can occur well outside the area enclosed by the cone.

# Situation Overview

Tropical Depression 14



Tropical Analysis and Forecast Branch  
NWS National Hurricane Center



...AIR FORCE RESERVE HURRICANE HUNTER  
AIRCRAFT FINDS THE CENTER OF  
TD 14 JUST OFF THE NORTHEASTERN  
COAST OF HONDURAS...

Summary of 700 AM CDT...

LOCATION...16.2N 84.2W  
ABOUT 160 MI...255 KM E OF ISLA ROATAN  
HONDURAS

MAXIMUM SUSTAINED WINDS...35 MPH

PRESENT MOVEMENT...WNW OR 300  
DEGREES AT 12 MPH

PEAK SEAS...10 FT

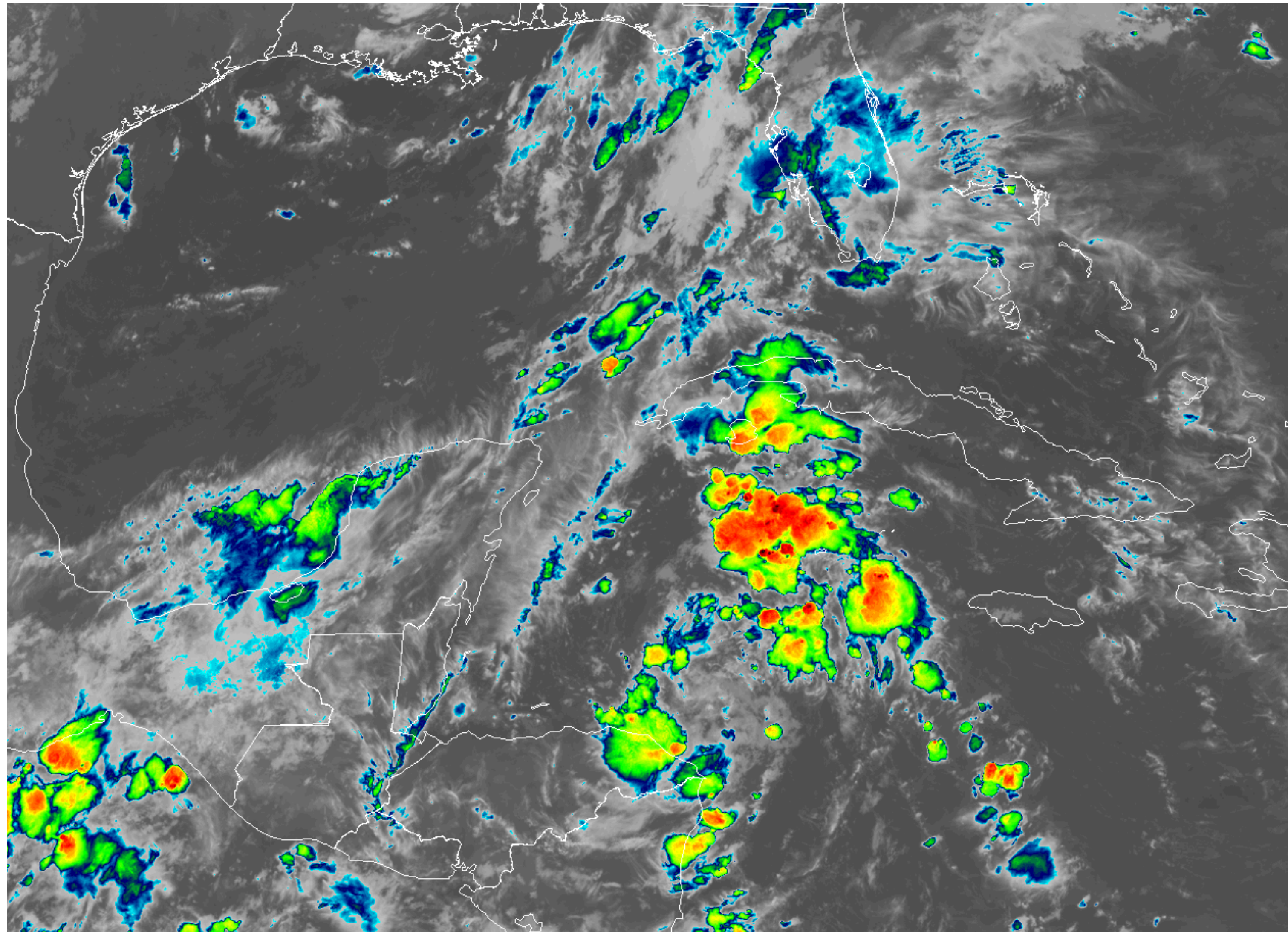


# Current Satellite View

Tropical Depression 14



Tropical Analysis and Forecast Branch  
NWS National Hurricane Center



8/21/2020 9:47 AM

[www.nhc.noaa.gov](http://www.nhc.noaa.gov)

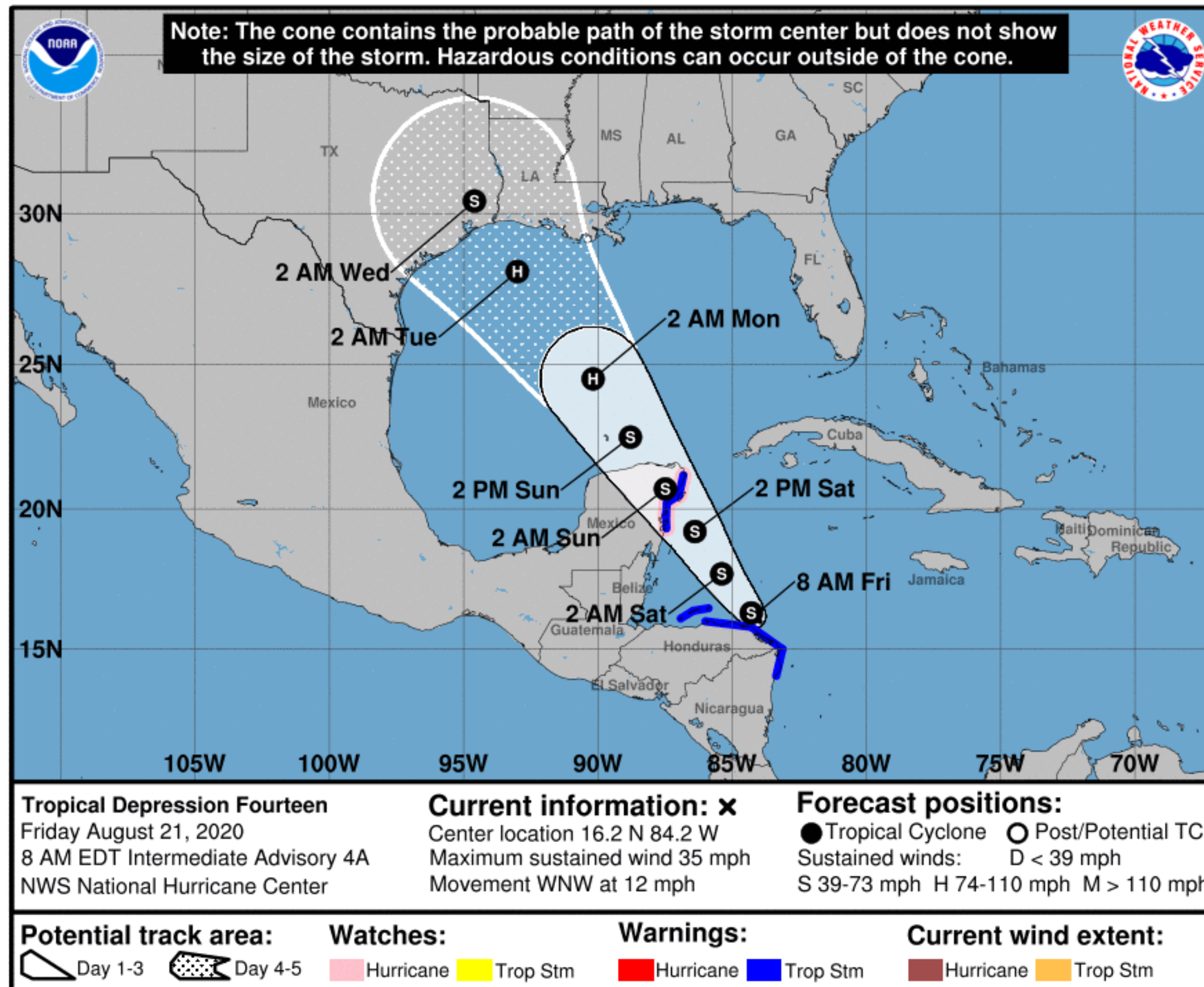


# Forecast Information

## Tropical Depression 14



Tropical Analysis and Forecast Branch  
NWS National Hurricane Center



- Near the S Central Gulf of Mexico Sunday.
- Near the NW or N Central Gulf of Mexico Days 4-5.
- Near Hurricane strength by early next week.

\*\* Swaths are calculated using average track errors and actual track may be well inside, or possibly outside the potential track areas indicated.

**NOTE:** Do not focus on the exact track. Impacts can occur well outside the area enclosed by the cone.

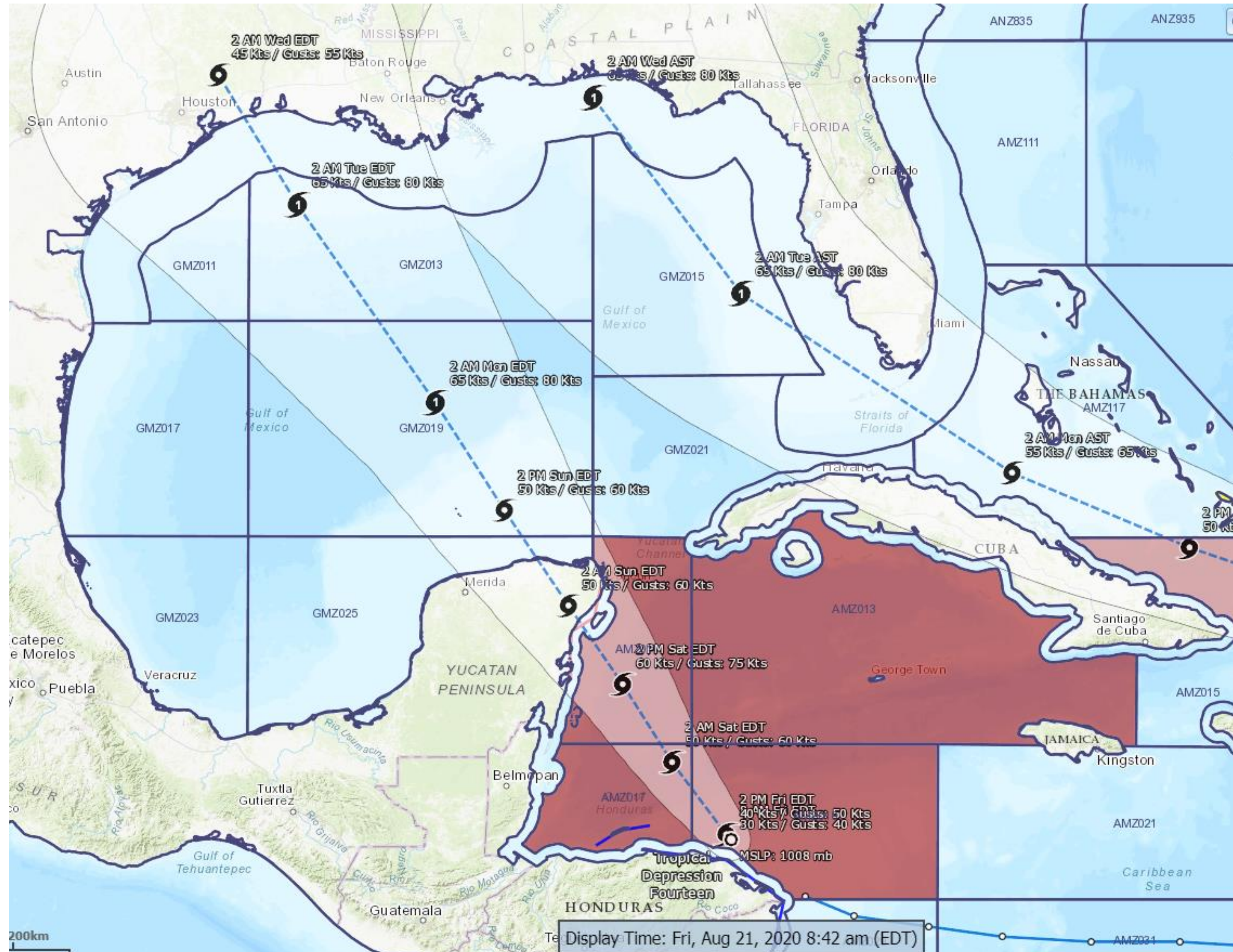


# Hazards Map

## Tropical Storm Laura & TD14



Tropical Analysis and Forecast Branch  
NWS National Hurricane Center



 Tropical Storm Warning

- <https://nowcoast.noaa.gov/>

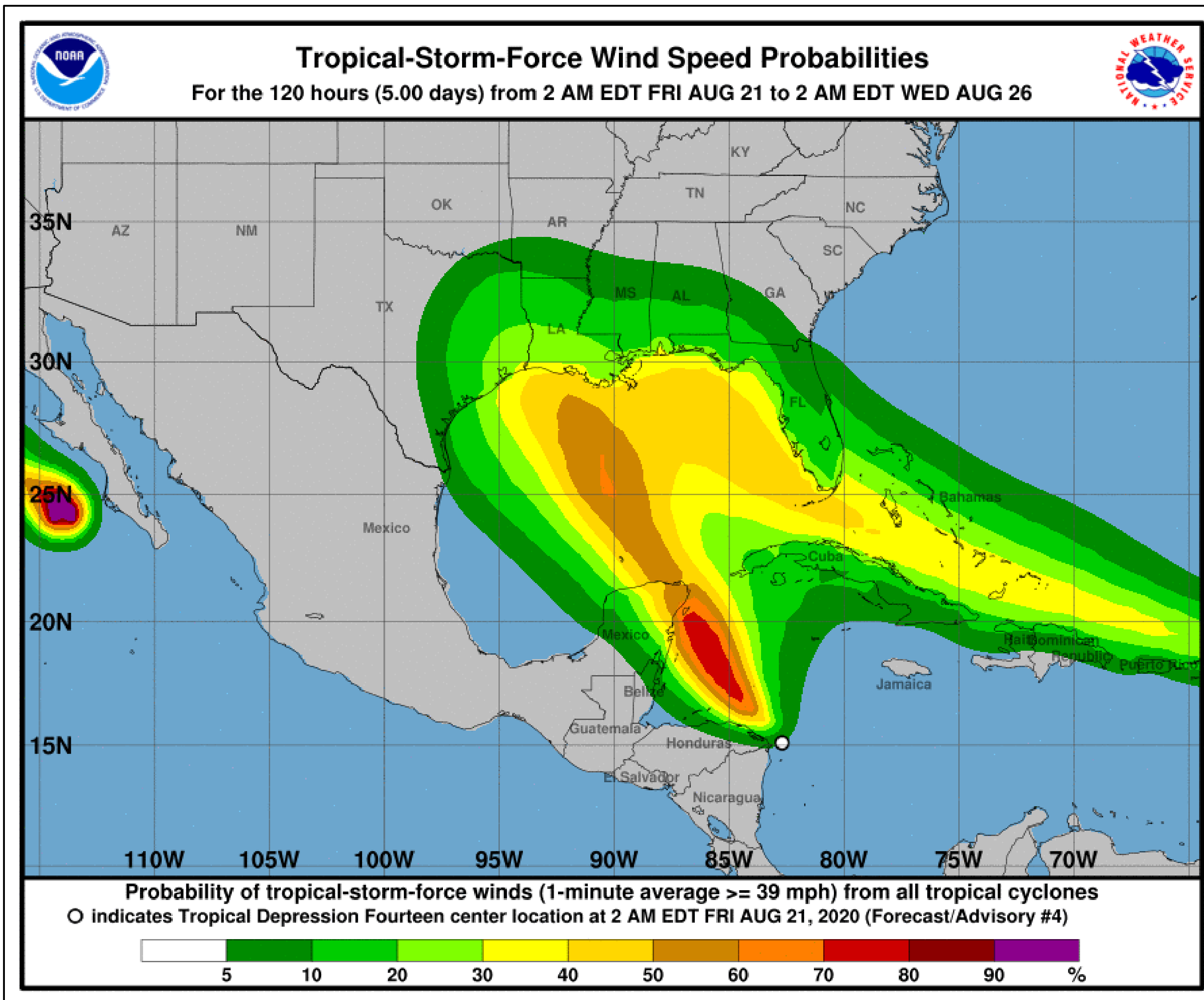


# T.S. Wind Speed Probabilities

Tropical Storm Laura & TD14



Tropical Analysis and Forecast Branch  
NWS National Hurricane Center



- Mobile: 25-30% Chance
- New Orleans: 20-25% Chance
- Beaumont: 30-35% Chance
- Galveston: 25-30% Chance
- Corpus Christi: 10% Chance
- Probabilities of sustained tropical storm force winds (34 kt to 63 kt) over the next 5 days, based off this cyclone's wind radii and track.
- See the color bar below the image for more details.
- *\*Hurricane 0-5% all locations\**

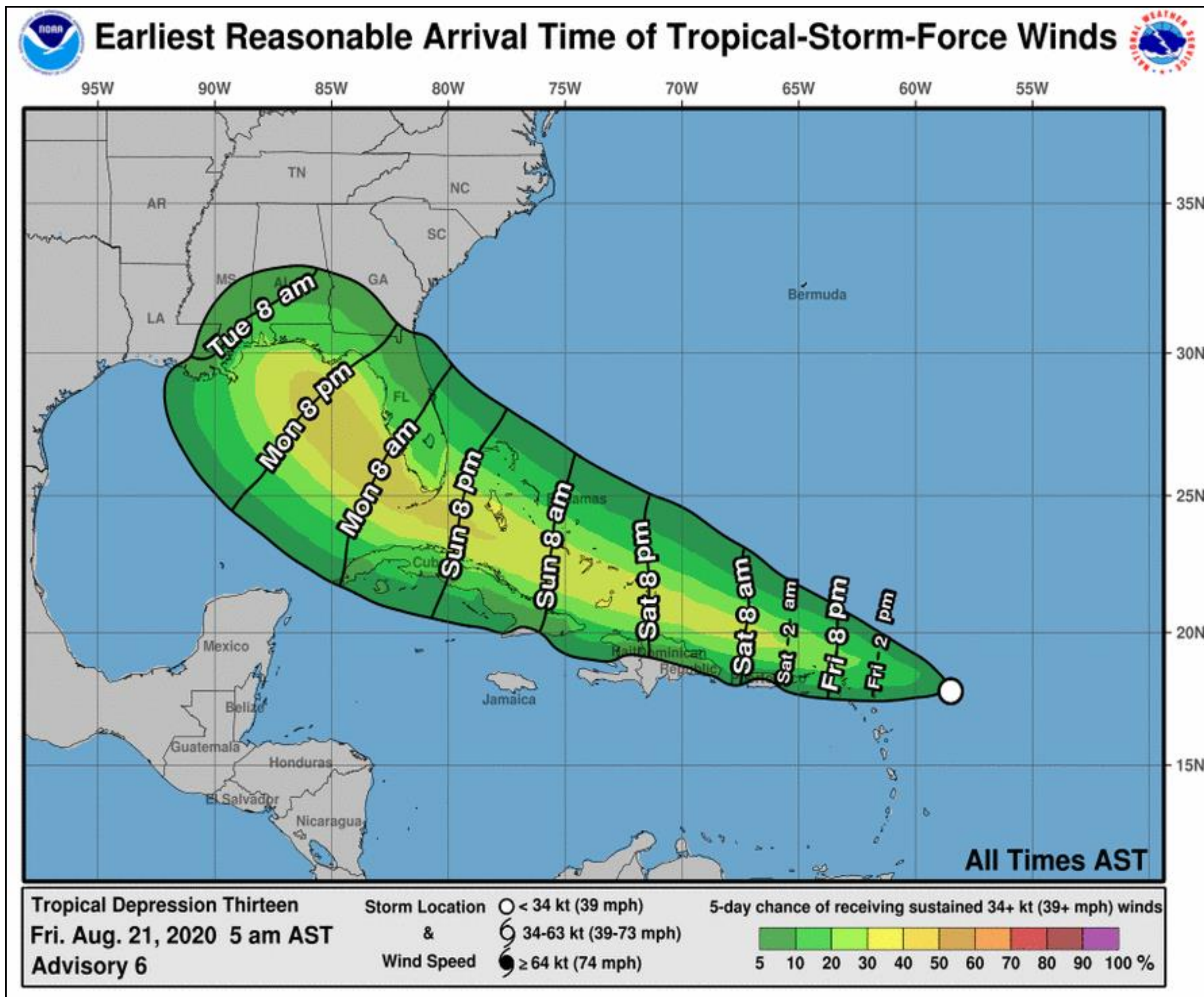


# Earliest Reasonable Time of Arrival

Tropical Storm Laura



Tropical Analysis and Forecast Branch  
NWS National Hurricane Center



- Mobile: Tuesday 1 am CDT
- New Orleans: Tuesday 7 am CDT
- The earliest reasonable time of arrival of Tropical Storm Force Winds (34kt to 63 kt) for this cyclone based off the current track and wind radii.
- See the color bar below the image for more details.

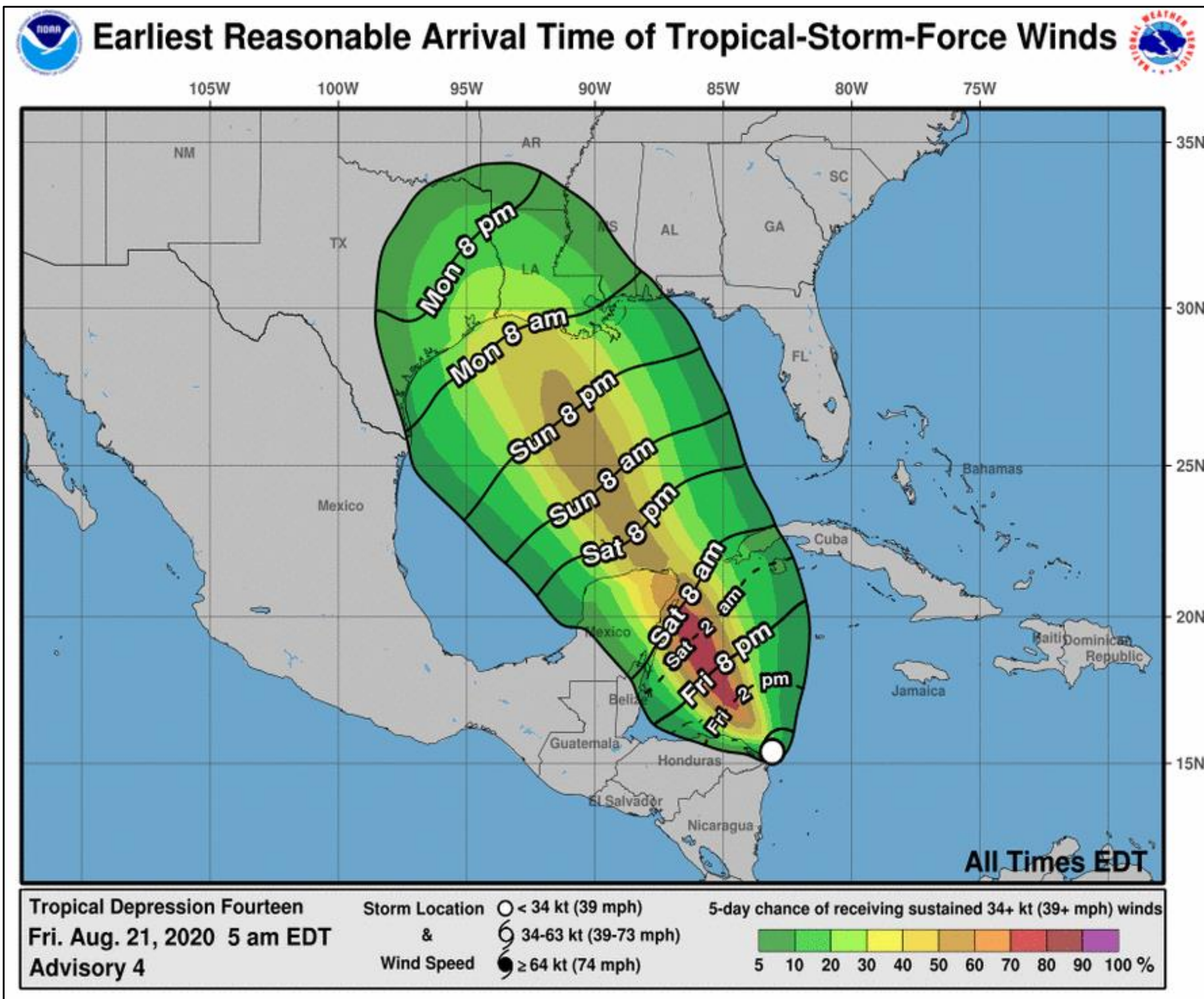


# Earliest Reasonable Time of Arrival

Tropical Depression 14



Tropical Analysis and Forecast Branch  
NWS National Hurricane Center



- Mobile: Monday 7am CDT
  - New Orleans: Monday 7am CDT
  - Galveston: Monday 7am CDT
  - Beaumont: Monday 7am CDT
  - Corpus Christi: Monday 7am CDT
  - Texas City: Monday 7am CDT
- 
- The earliest reasonable time of arrival of Tropical Storm Force Winds (34kt to 63 kt) for this cyclone based off the current track and wind radii.
  - See the color bar below the image for more details.

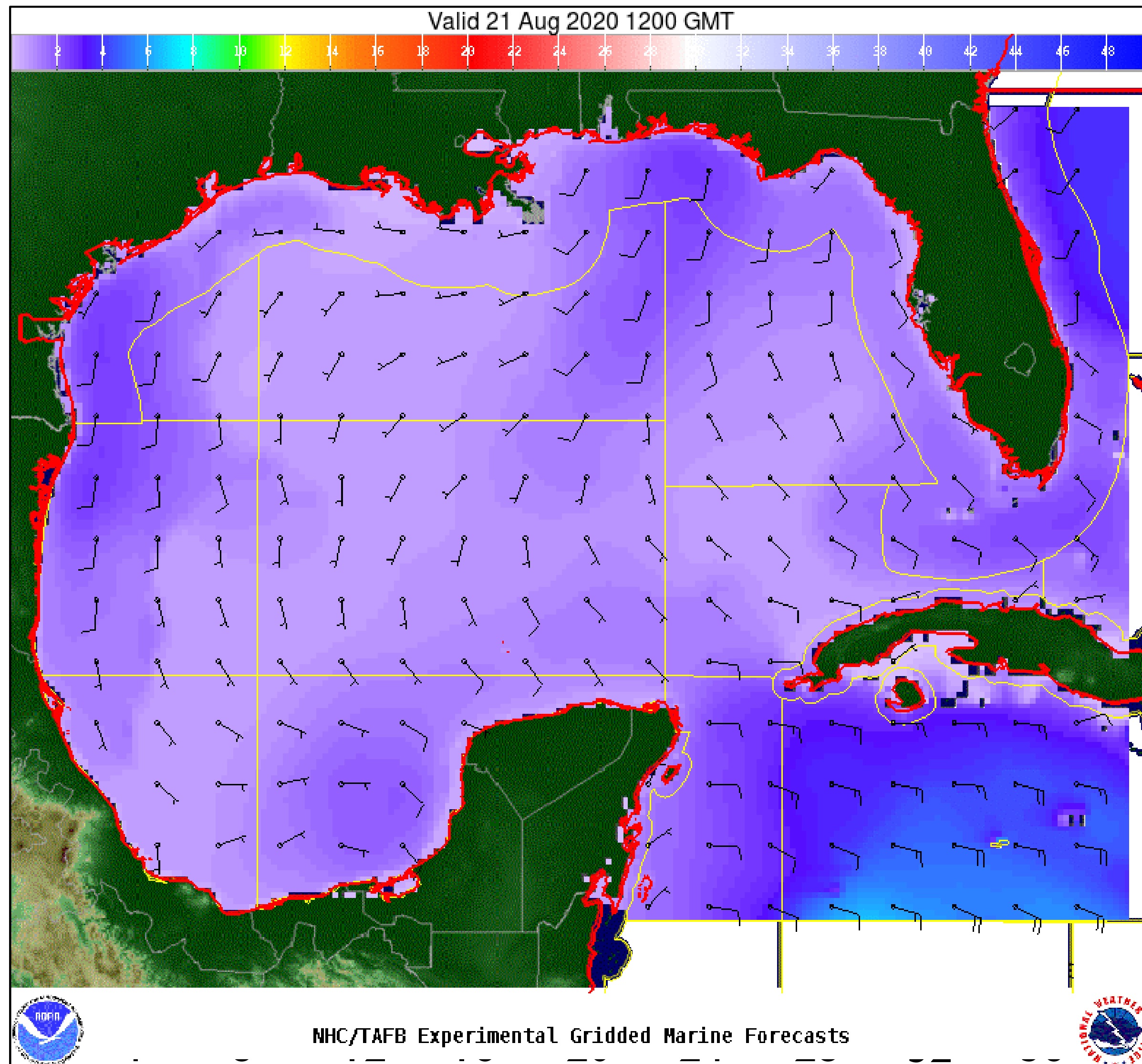


# Wind And Waves

Tropical Storm Laura & TDI4



Tropical Analysis and Forecast Branch  
NWS National Hurricane Center



Current Conditions

**7am CDT Friday, August 21<sup>st</sup>, 2020**

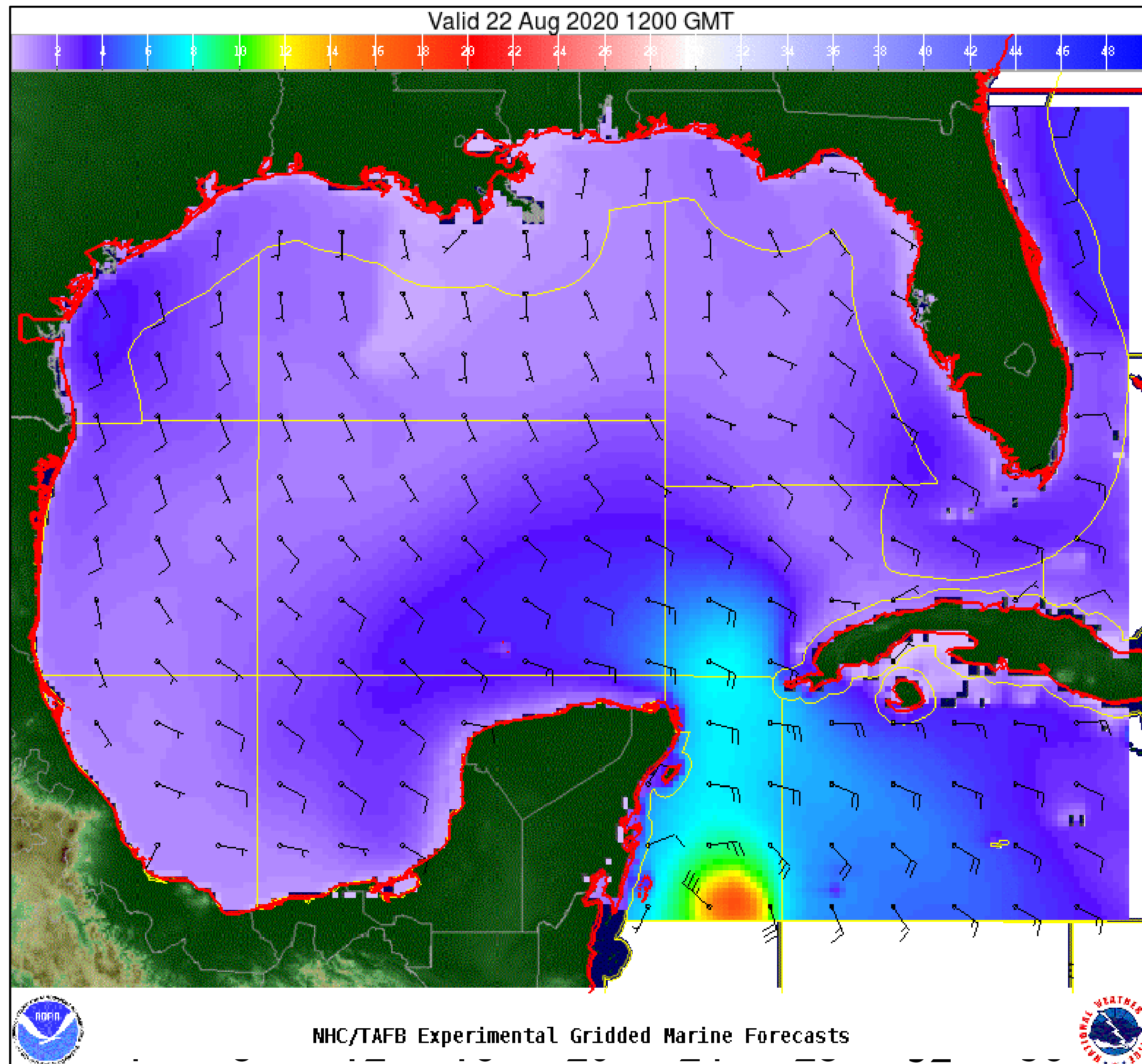


# Wind And Waves

Tropical Storm Laura & TDI4



Tropical Analysis and Forecast Branch  
NWS National Hurricane Center



24 Hour Forecast

**7am CDT Saturday, August 22<sup>nd</sup>, 2020**

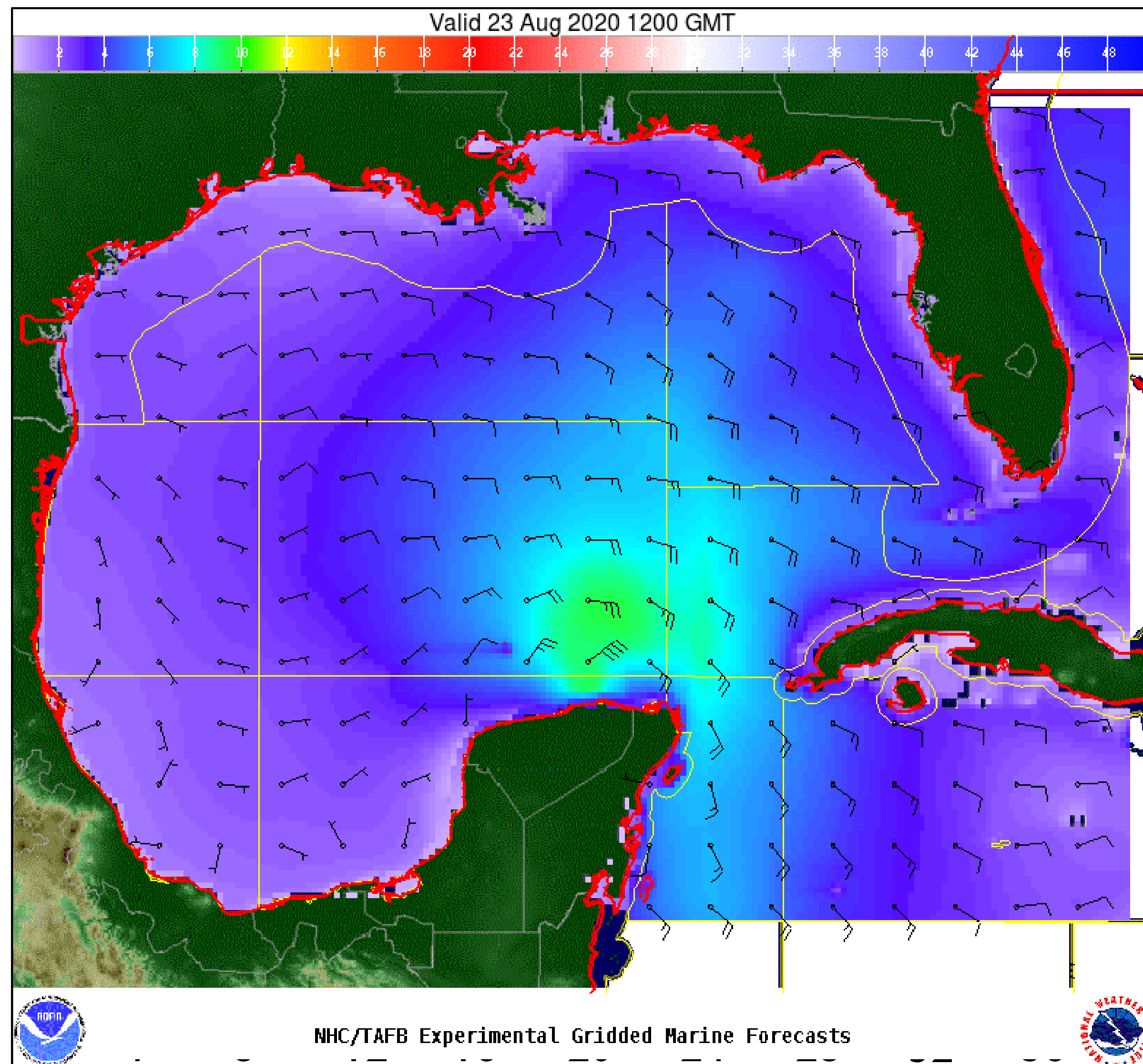


# Wind And Waves

Tropical Storm Laura & TD14



Tropical Analysis and Forecast Branch  
NWS National Hurricane Center



48 Hour Forecast

**7am CDT Sunday, August 23<sup>rd</sup>, 2020**

Laura

Peak Winds: 45 KT

Peak Seas: 18 FT

Fourteen

Peak Winds: 50 KT

Peak Seas: 12 FT

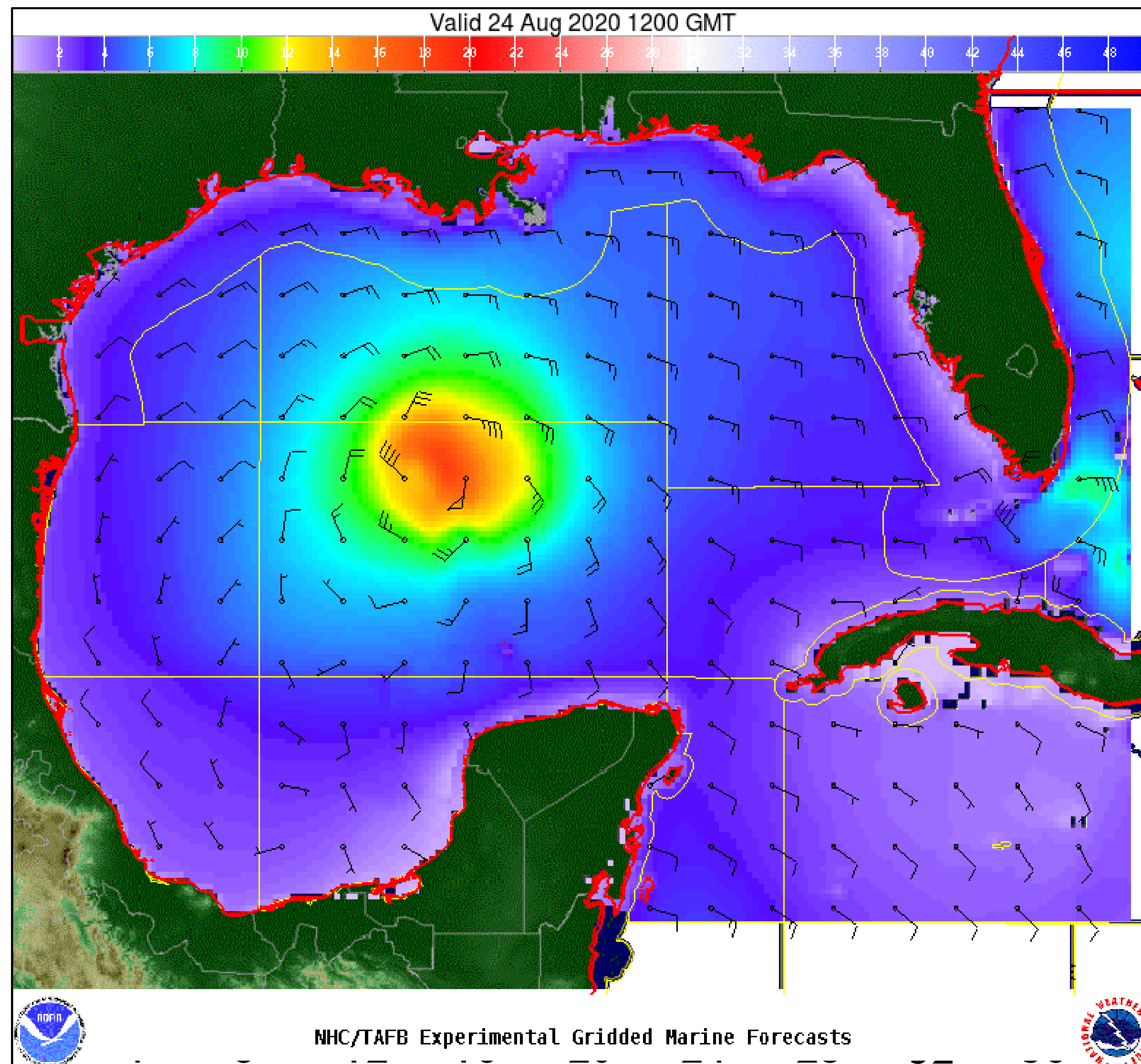


# Wind And Waves

Tropical Storm Laura & TD14



Tropical Analysis and Forecast Branch  
NWS National Hurricane Center



72 Hour Forecast

**7am CDT Monday, August 24<sup>th</sup>, 2020**

Laura

Peak Winds: 45 KT

Peak Seas: 14 FT

Fourteen

Peak Winds: 65 KT

Peak Seas: 19 FT

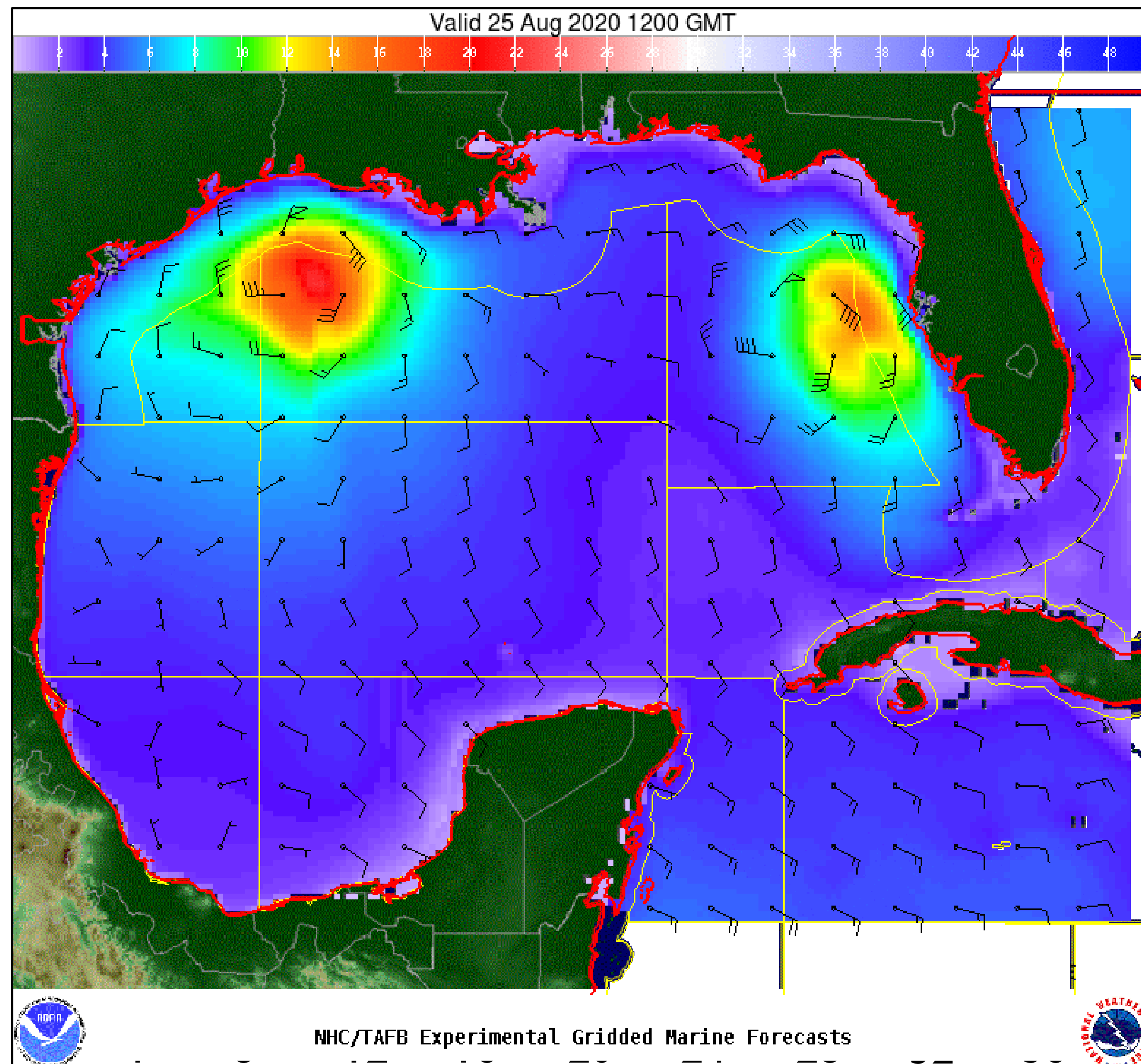


# Wind And Waves

Tropical Storm Laura & TD14



Tropical Analysis and Forecast Branch  
NWS National Hurricane Center



96 Hour Forecast

**7am CDT Tuesday, August 25<sup>th</sup>, 2020**

Laura

Peak Winds: 50 KT

Peak Seas: 20 FT

Fourteen

Peak Winds: 60 KT

Peak Seas: 18 FT

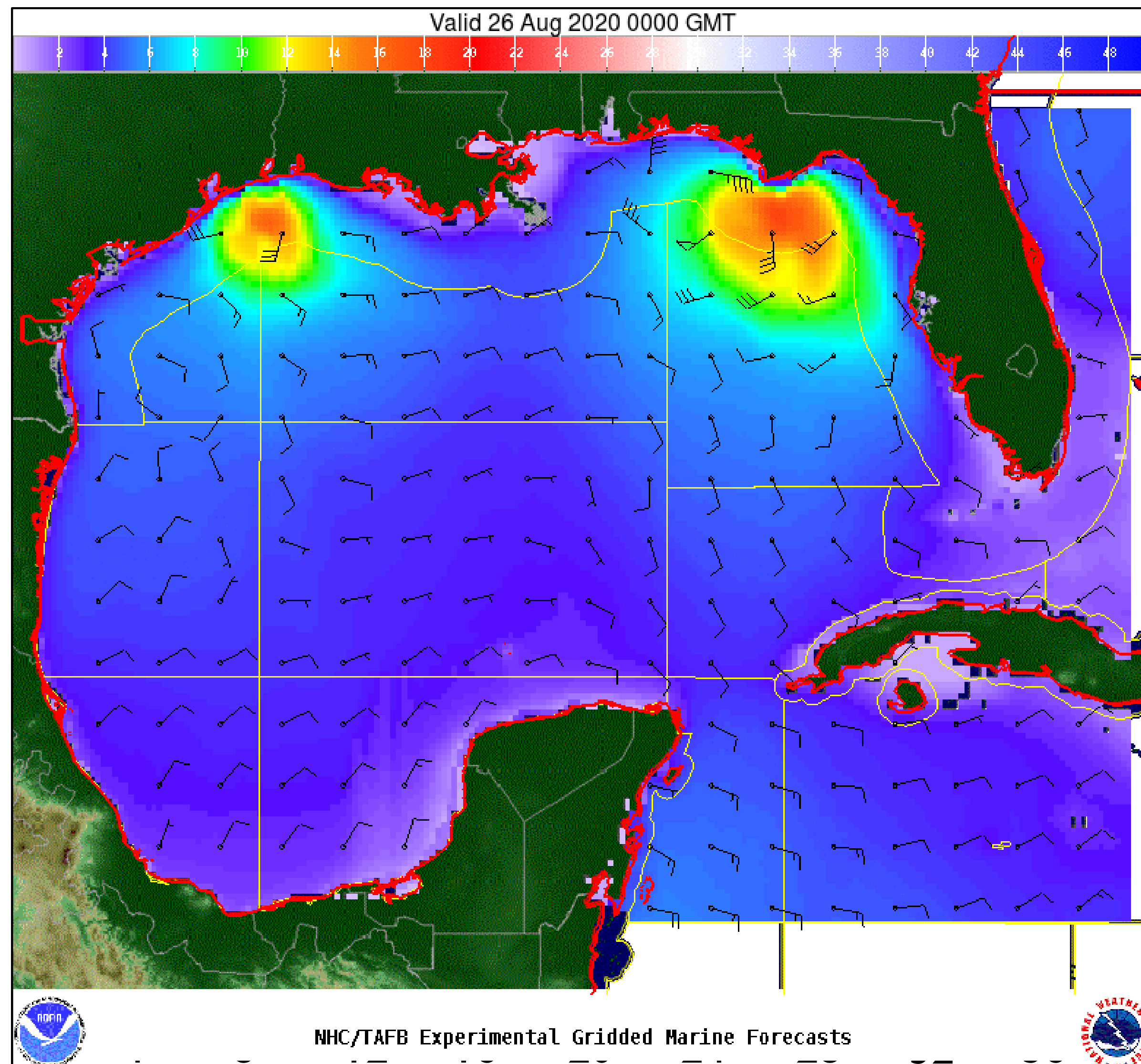


# Wind And Waves

Tropical Storm Laura & TD14



Tropical Analysis and Forecast Branch  
NWS National Hurricane Center



108 Hour Forecast

**7pm CDT Tuesday, August 25<sup>th</sup>, 2020**

Laura

Peak Winds: 65 KT

Peak Seas: 20 FT

Fourteen

Peak Winds: 65 FT

Peak Seas: 20 FT

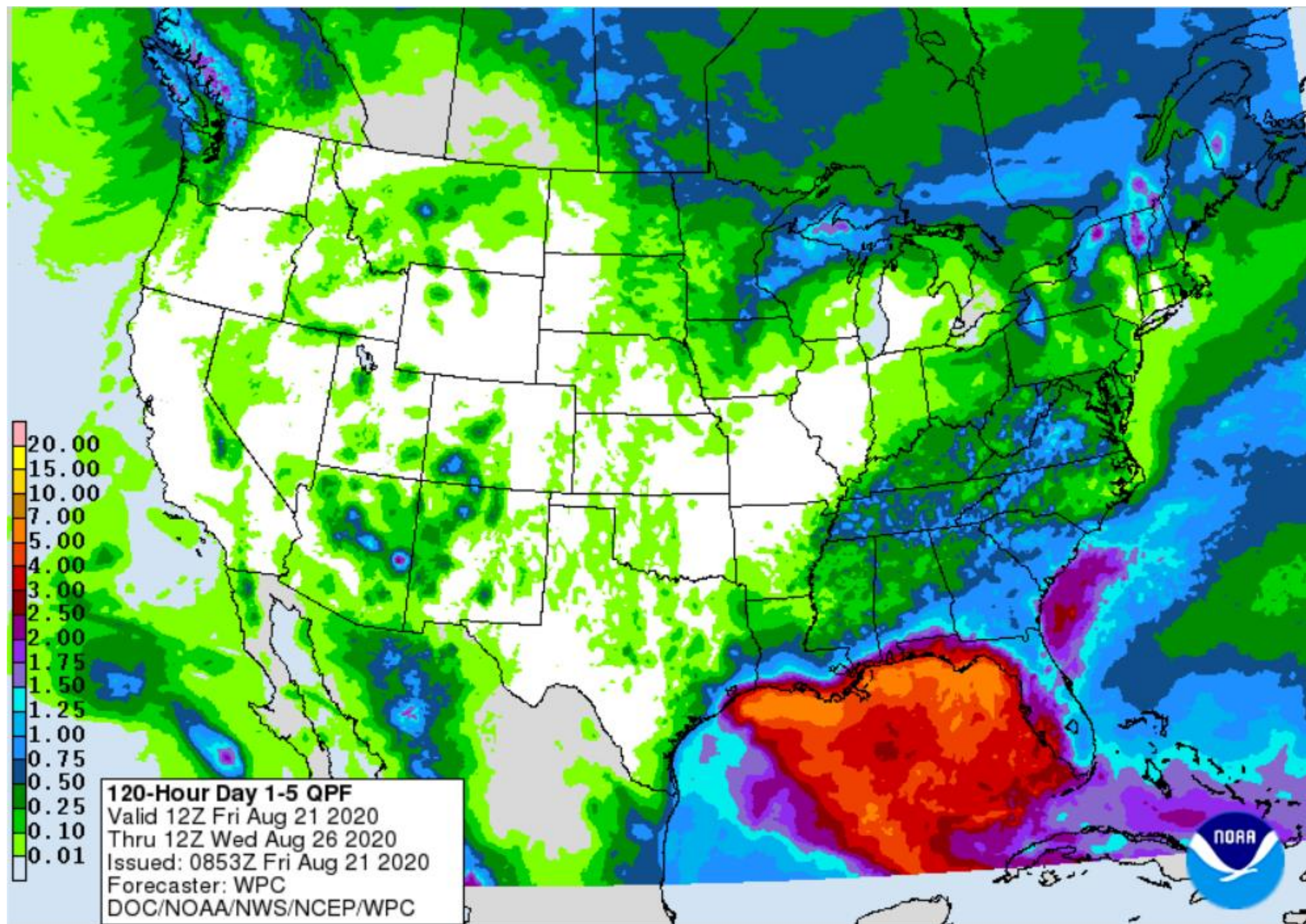


# Expected Storm Total Rainfall

Tropical Storm Laura & TDI4



Tropical Analysis and Forecast Branch  
NWS National Hurricane Center



- Total rainfall in inches during the time span stated on the map.

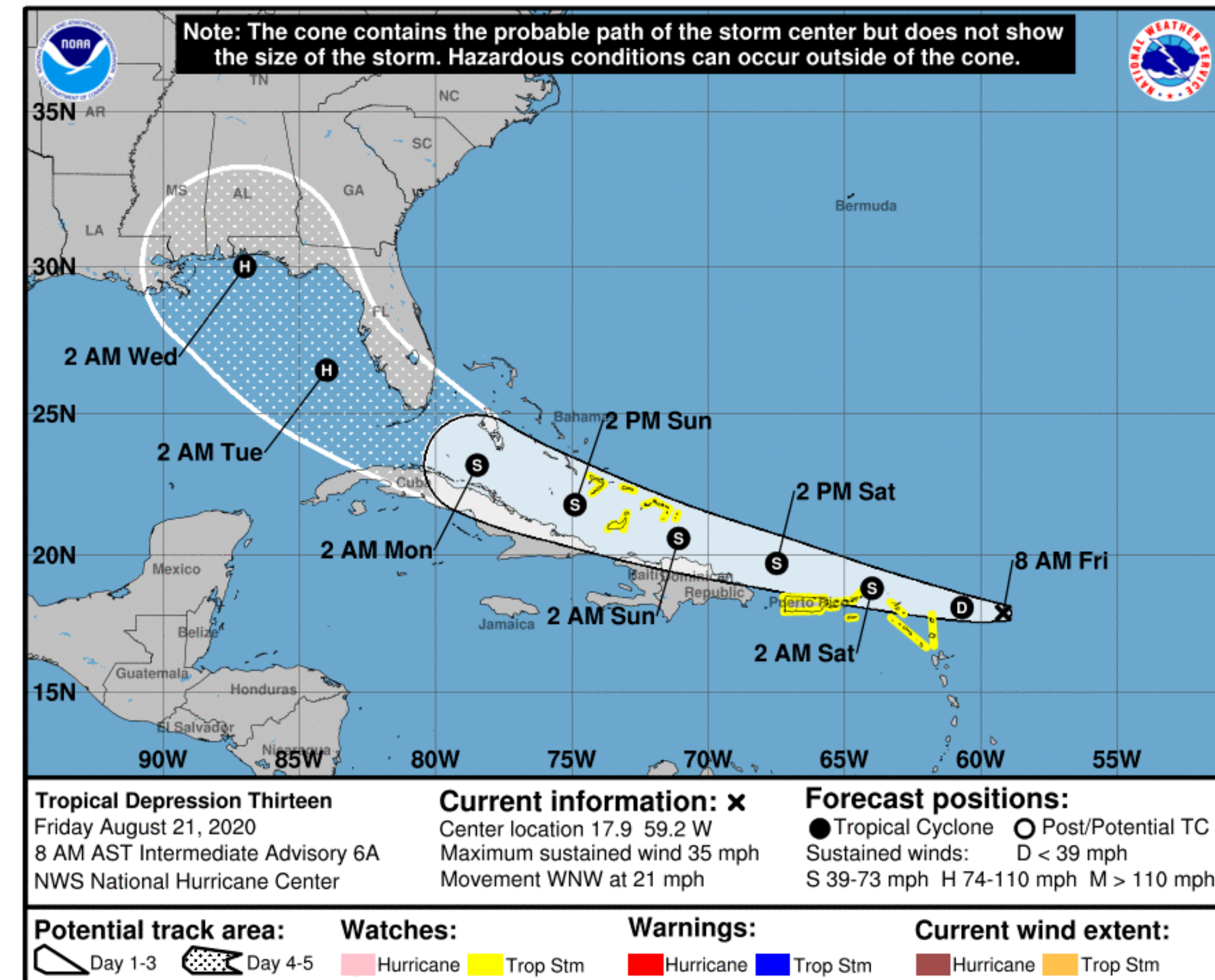


# Key Messages

## Tropical Storm Laura & TD14



Tropical Analysis and Forecast Branch  
NWS National Hurricane Center



### Marine Key Messages:

- Both Laura & TD14 forecast to be in or near the Gulf of Mexico by early next week
- Near Hurricane Strength



**IMPACTS FOR D8 (through 5 days)**

**Winds – High**

**Storm Surge – High**

**Rainfall/Flash Flooding – High**

**Tornadoes – Low to Moderate**

**Waves – High**



# Tropical Storm Laura & TD 14 Briefing

You can contact the Tropical Analysis and Forecast Branch at  
305-229-4424

*The Next Briefing Will Be:  
Saturday 9:00 AM CDT*

*You can always find get the latest graphics and information for this storm at [www.hurricanes.gov](http://www.hurricanes.gov)*



NHC\_TAFB

[www.nhc.noaa.gov](http://www.nhc.noaa.gov)