

IMPACTS FOR D8 (through next 5 days)

Winds – Extreme

Storm Surge – Extreme

Rainfall/Flash Flooding – Extreme

Tornadoes – Moderate

Waves - Extreme

HURRICANE IDA BRIEFING

5:00 PM CDT

Sunday, August 29, 2021

Prepared by:

Amanda Reinhart

*Tropical Analysis and Forecast Branch
NWS National Hurricane Center*

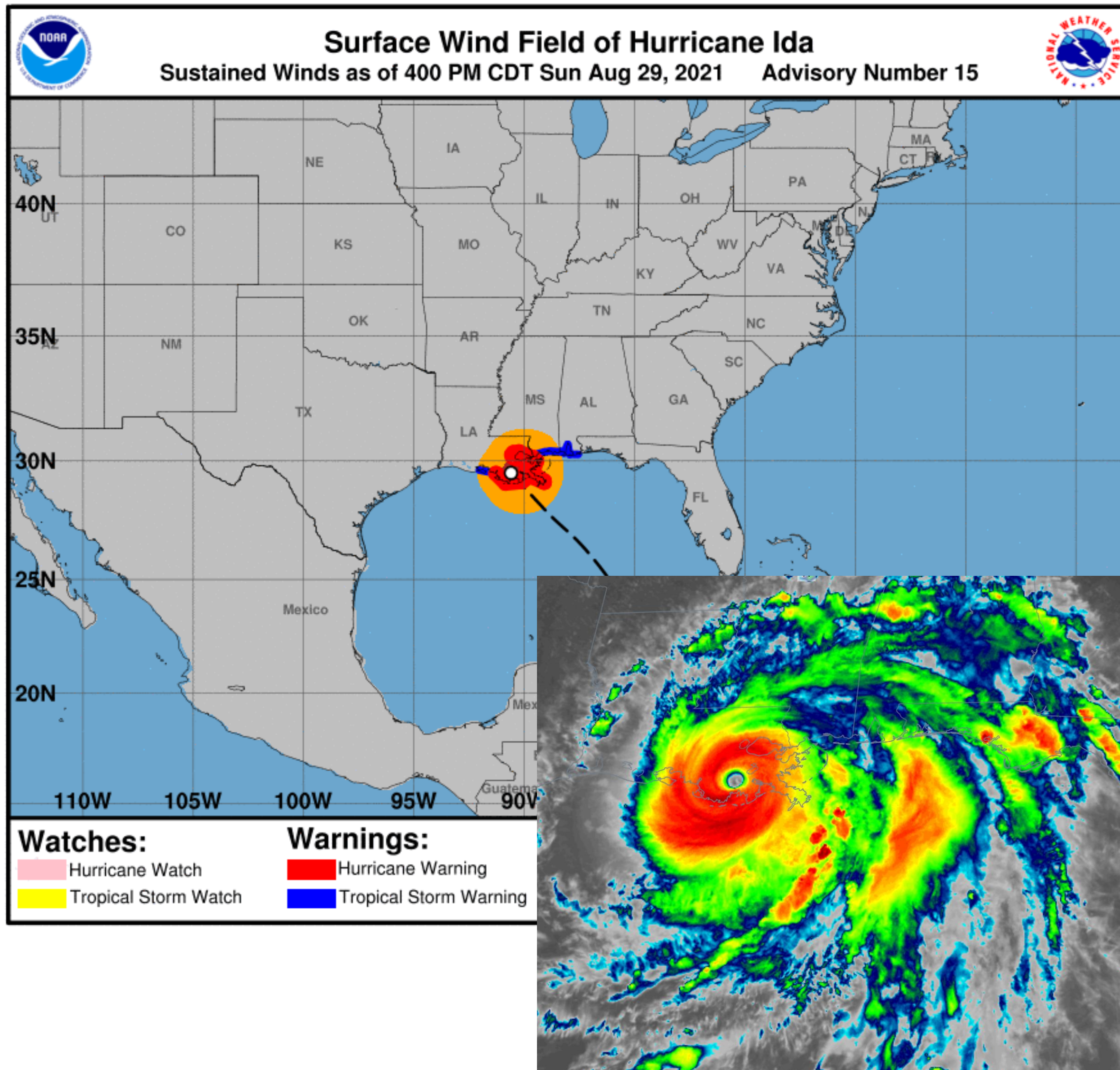


Situation Overview

Hurricane Ida



Tropical Analysis and Forecast Branch
NWS National Hurricane Center



...IDA MOVING NORTHWESTWARD OVER SOUTHEASTERN LOUISIANA...

...CATASTROPHIC HAZARDS CONTINUE IN PORTIONS OF SOUTHEASTERN LOUISIANA...

SUMMARY OF 400 PM CDT INFORMATION

LOCATION...29.5N 90.6W
ABOUT 40 NM SW OF NEW ORLEANS
LOUISIANA
ABOUT 60 NM SSE OF BATON ROUGE
LOUISIANA
MAXIMUM SUSTAINED WINDS...115 KT
PRESENT MOVEMENT...NW AT 9 KT

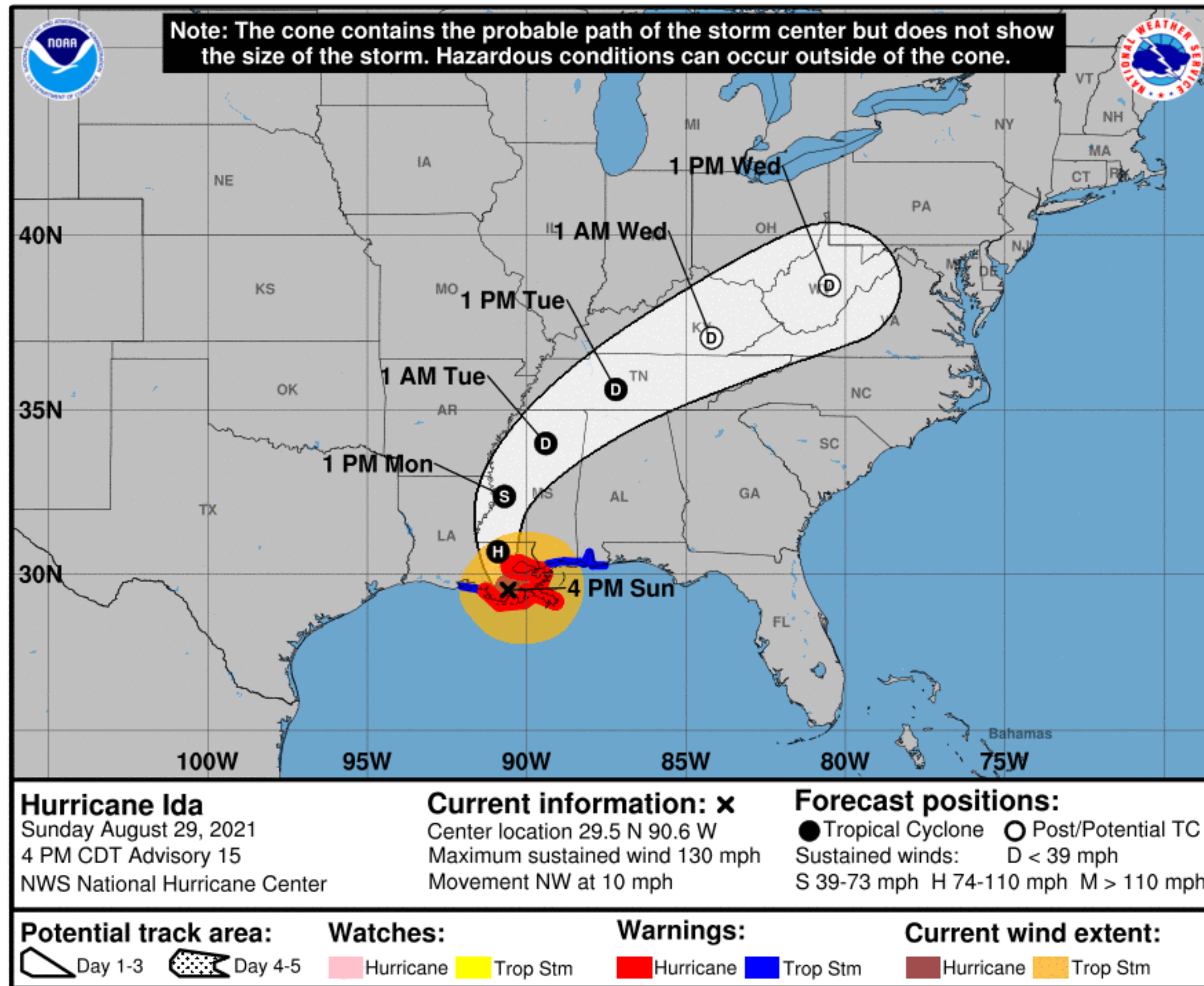
PEAK SEAS: 20 FT
12 FT SEAS...180NE 180SE 150SW 0NW

Forecast Information

Hurricane Ida



Tropical Analysis and Forecast Branch
NWS National Hurricane Center



- As Ida continues moving inland, it will take a northerly turn by Monday
- Ida is expected to maintain hurricane force winds through tonight

NOTE: Do not focus on the exact track. Impacts can occur well outside the area enclosed by the cone.

Hazards Map

Hurricane Ida



Tropical Analysis and Forecast Branch
NWS National Hurricane Center



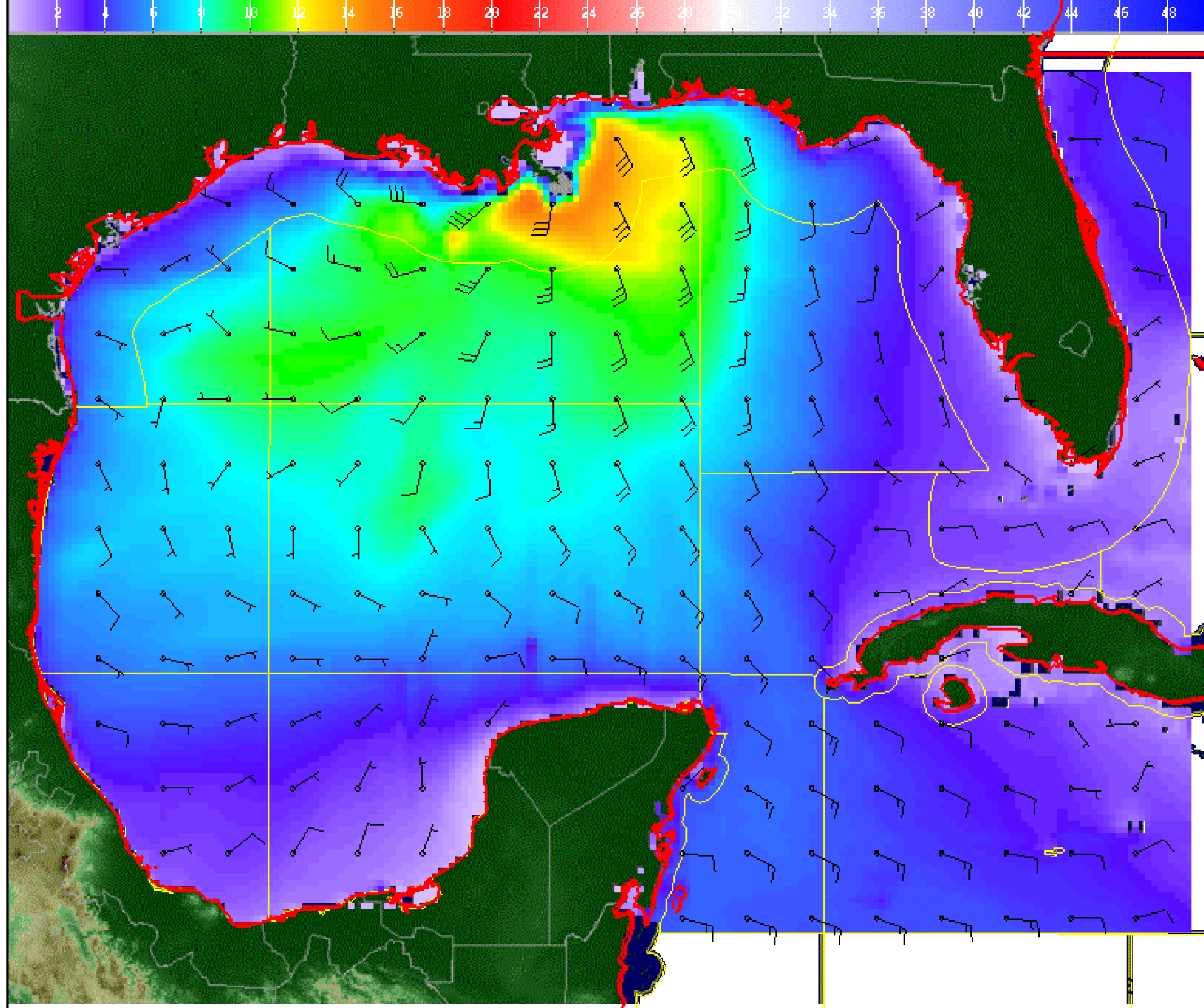
Wind And Waves

Hurricane Ida



Tropical Analysis and Forecast Branch
NWS National Hurricane Center

Valid 30 Aug 2021 0000 GMT



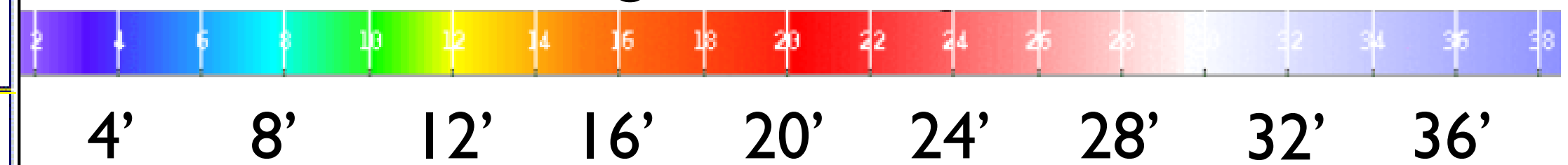
3 Hour Forecast

7 PM CDT Sunday, August 29th

Peak Winds: 40 kt

Peak Seas: 16 ft

■ Wave heights are in feet



NHC/TAFB Gridded Marine Forecasts



8/29/2021 5:42 PM

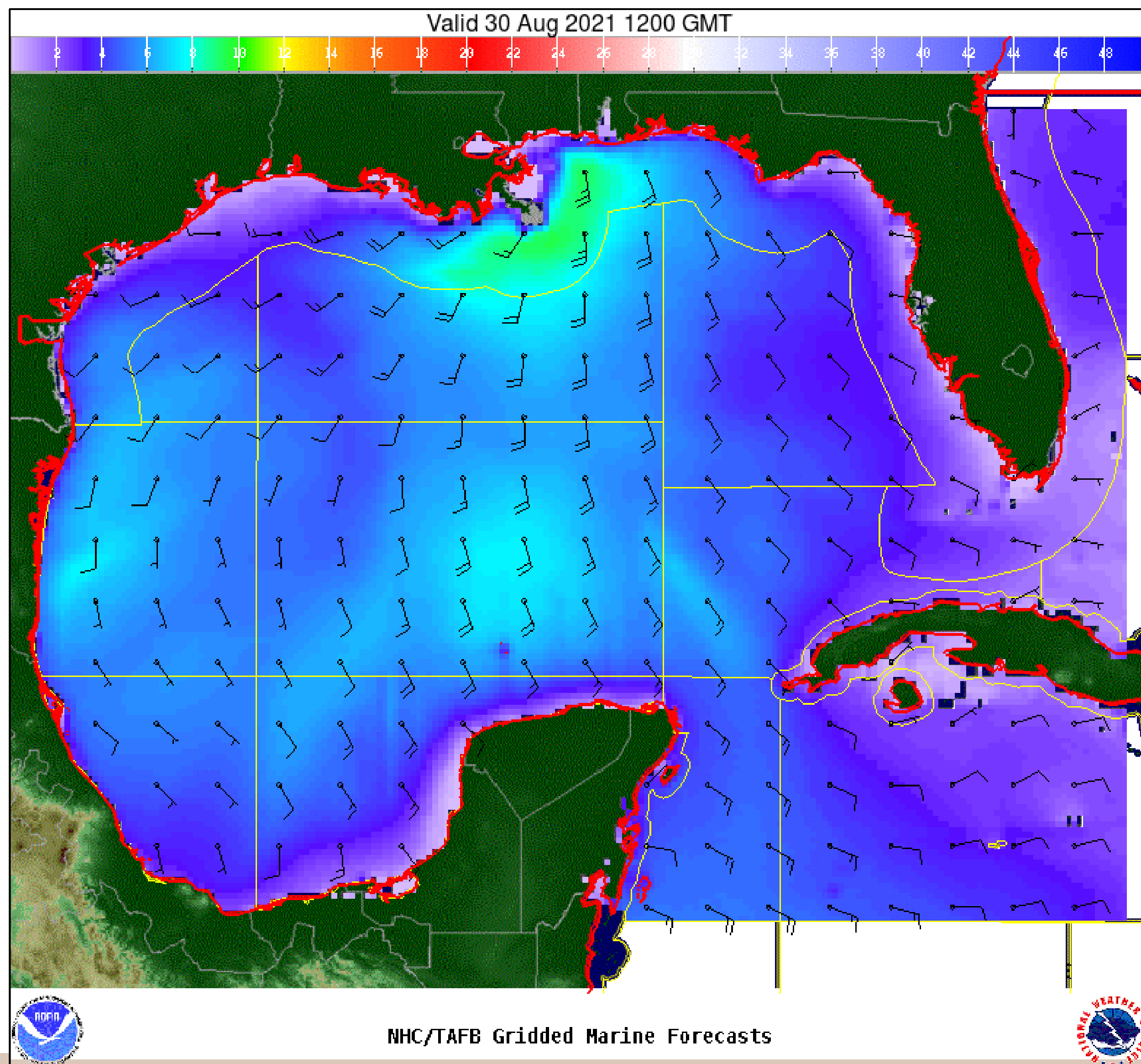
www.nhc.noaa.gov

Wind And Waves

Hurricane Ida



Tropical Analysis and Forecast Branch
NWS National Hurricane Center



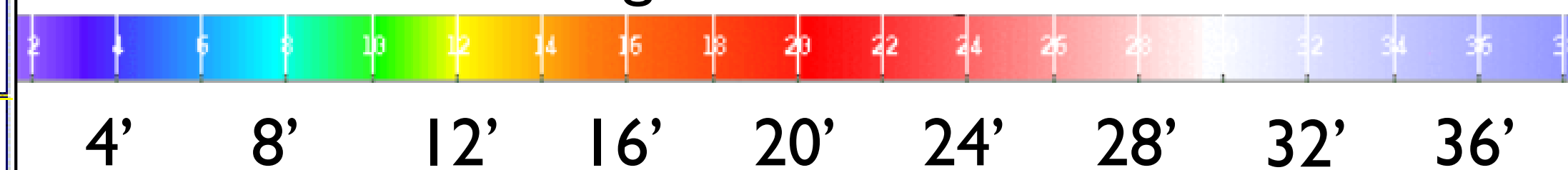
12 Hour Forecast

7 AM CDT Monday, August 30th

Peak Winds: 30 kt

Peak Seas: 9 ft

■ Wave heights are in feet

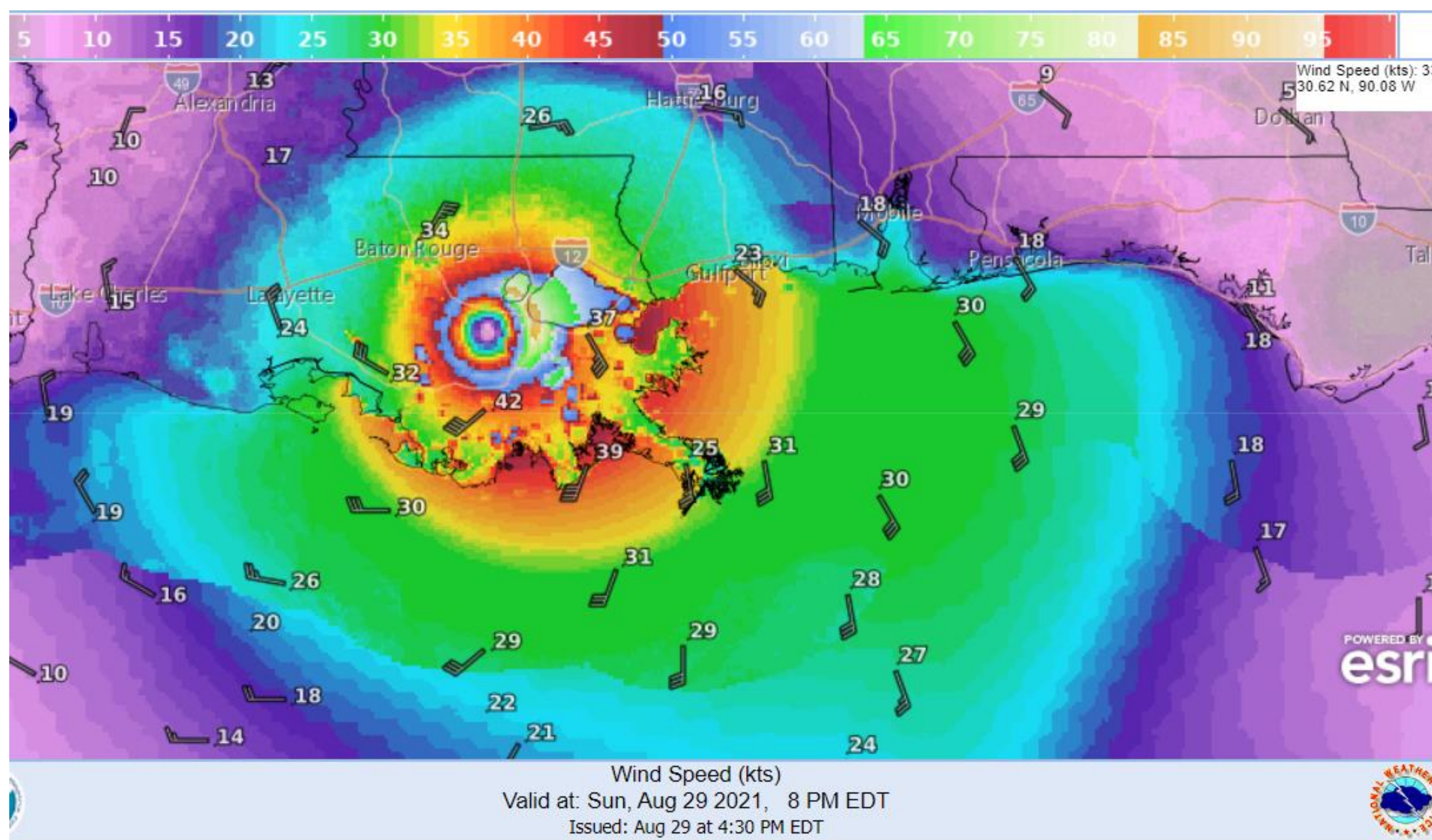


Winds Over Land

Hurricane Ida



Tropical Analysis and Forecast Branch
NWS National Hurricane Center



This Evening

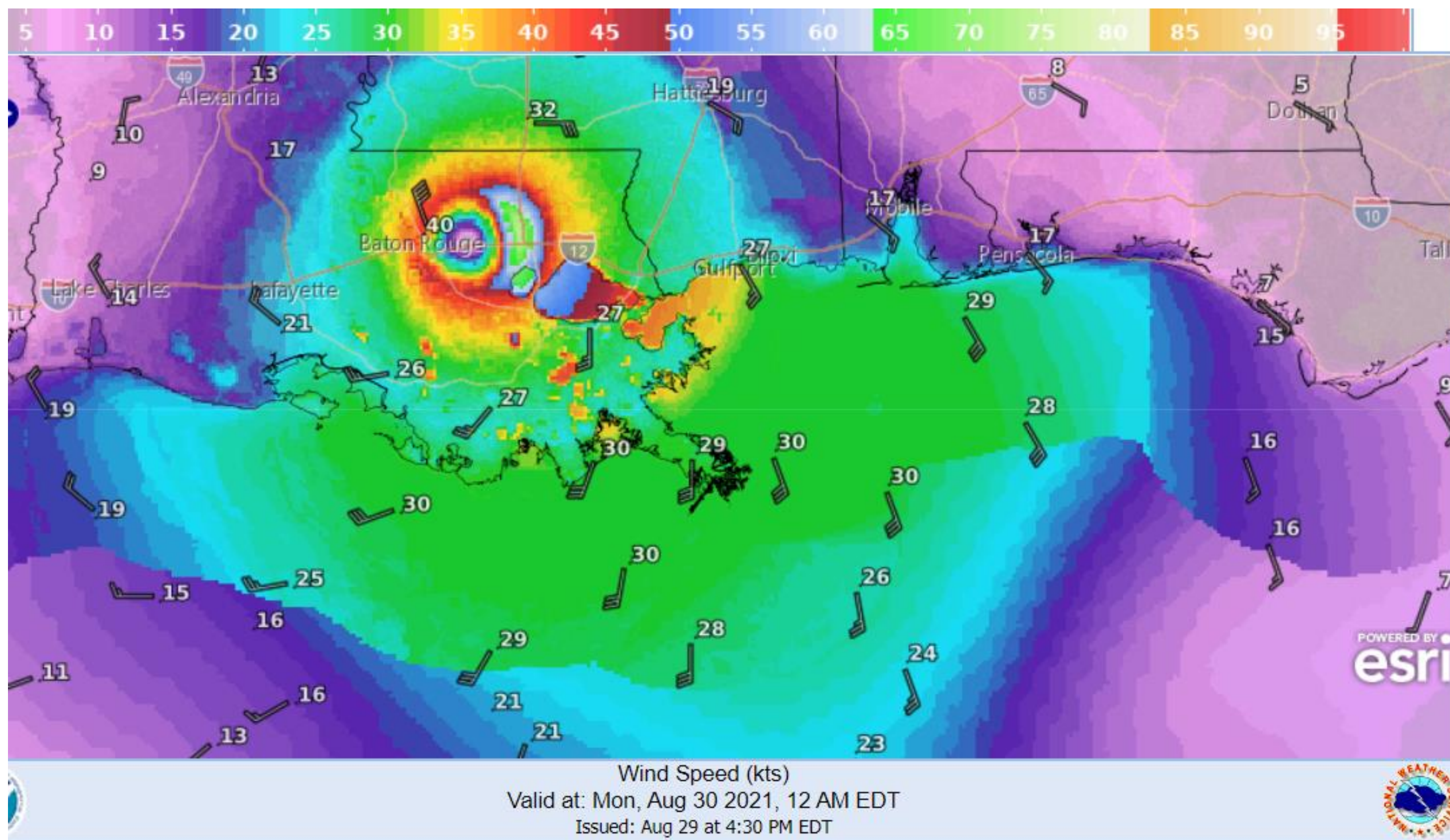
- Peak winds 65 kt west of New Orleans, LA
- 30 – 40 kt along the Louisiana and Mississippi Coast

Winds Over Land

Hurricane Ida



Tropical Analysis and Forecast Branch
NWS National Hurricane Center



Tonight

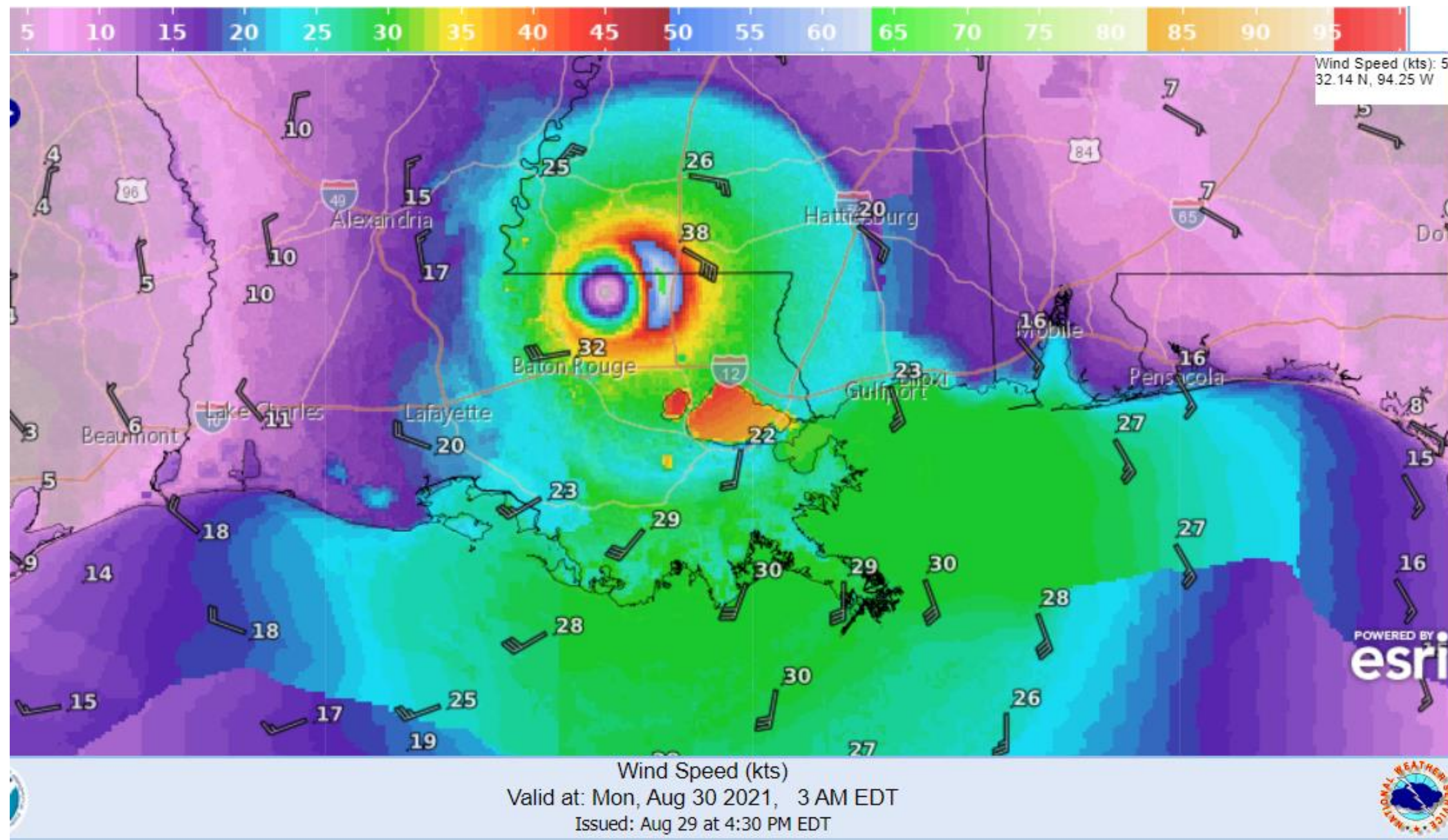
- Peak winds 40 kt near Baton Rouge, LA
- 25 – 30 kt along the Louisiana and Mississippi Coast

Winds Over Land

Hurricane Ida



Tropical Analysis and Forecast Branch
NWS National Hurricane Center



Late Sunday Night

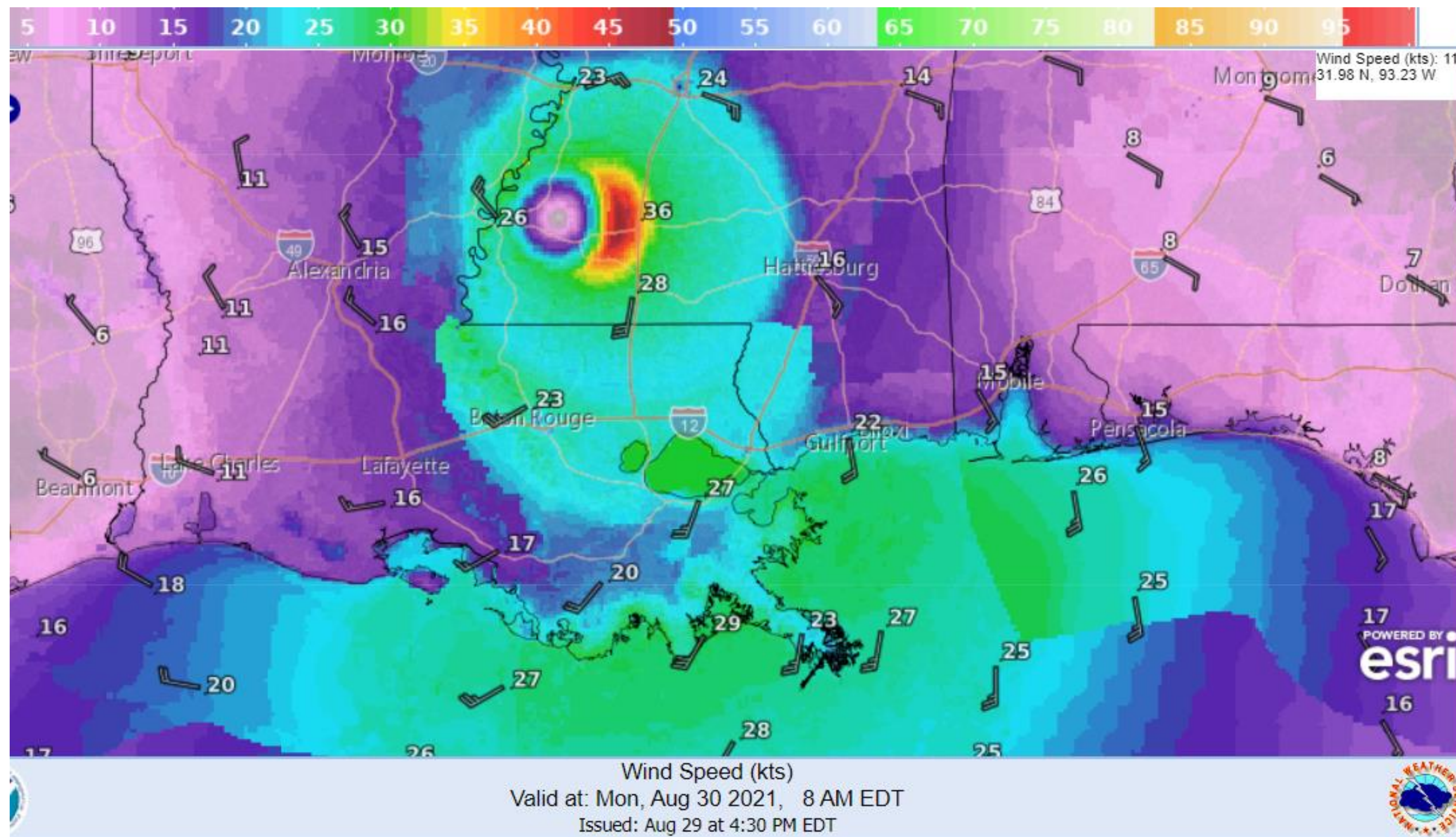
- Peak winds 40 kt north of Baton Rouge, LA
- 25 – 30 kt along the Louisiana and Mississippi Coast

Winds Over Land

Hurricane Ida



Tropical Analysis and Forecast Branch
NWS National Hurricane Center



Monday Morning

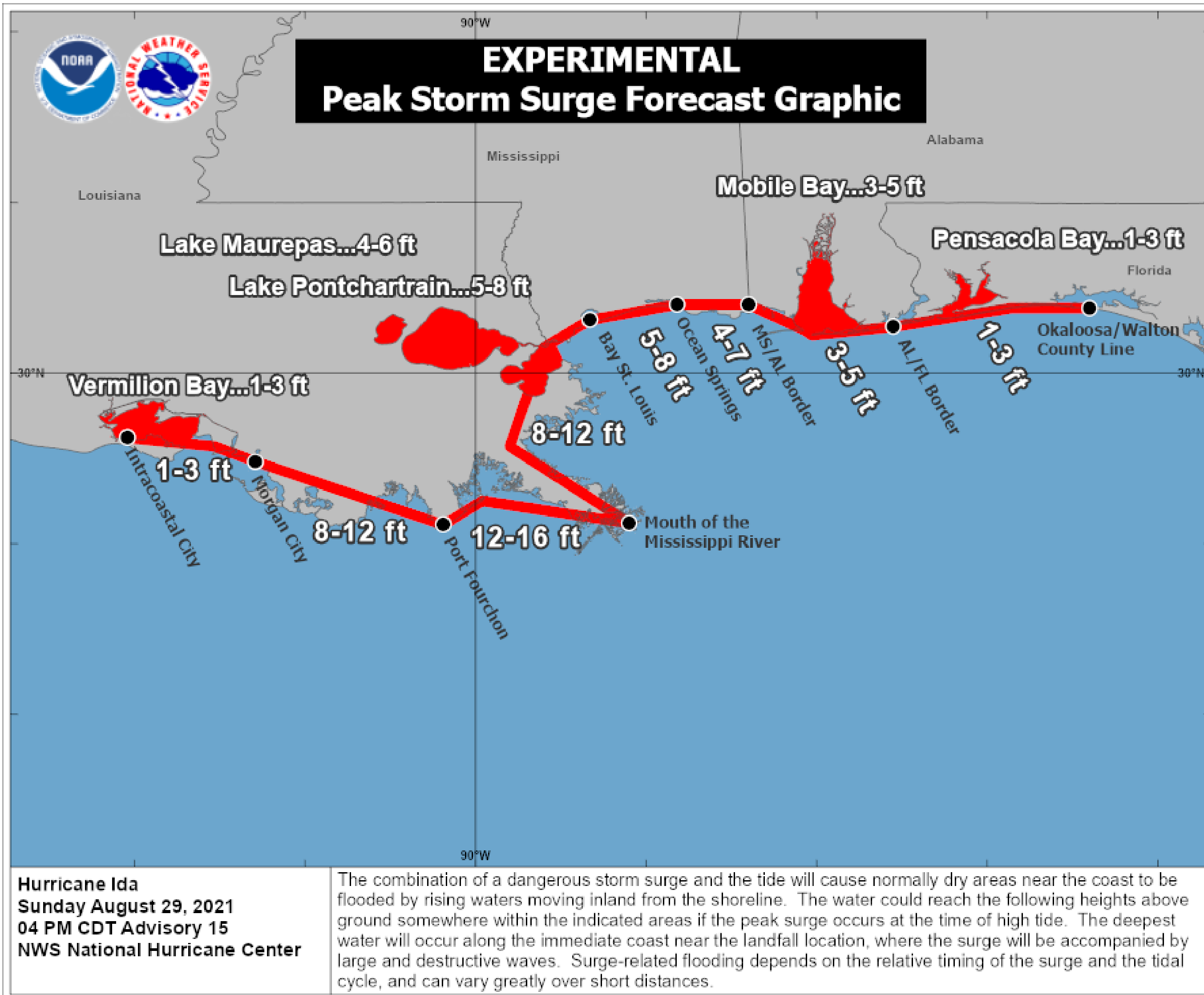
- Peak winds 30 kt near Natchez, MS
- 20 – 30 kt along the Louisiana and Mississippi Coast

Potential Peak Storm Surge / Watches and Warnings



Tropical Analysis and Forecast Branch
NWS National Hurricane Center

Hurricane Ida



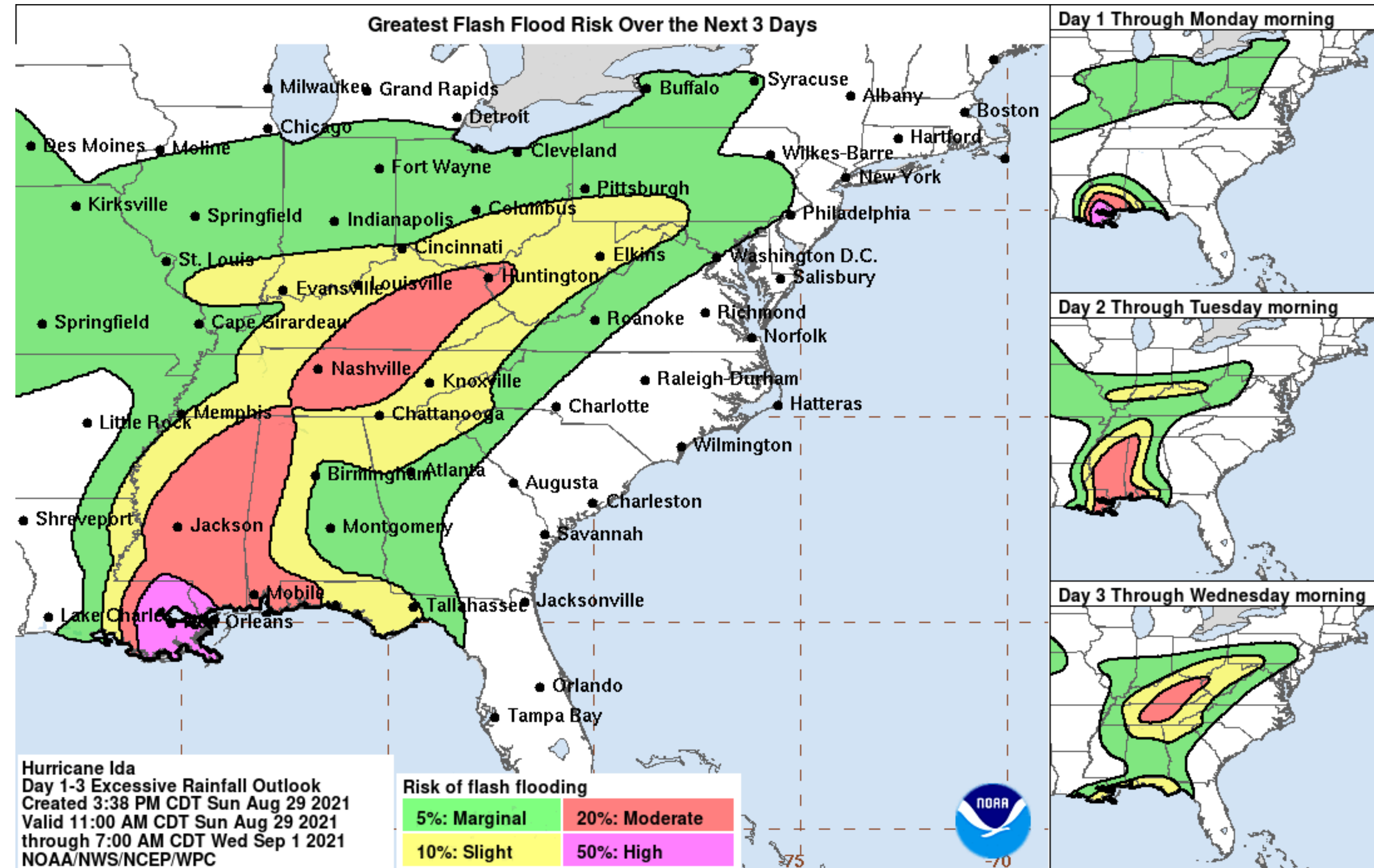
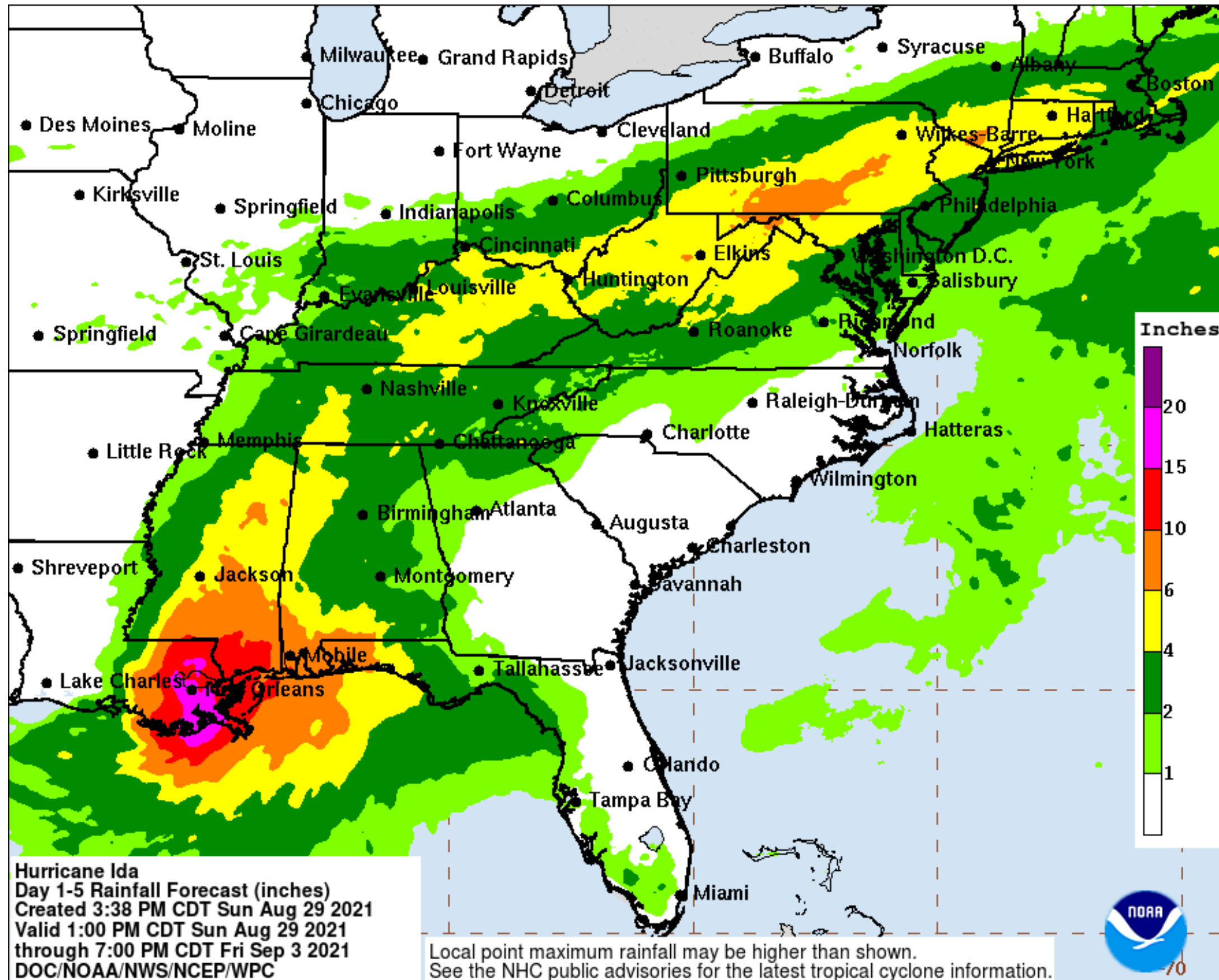
- Potential storm surge is represented in feet above the ground at any given point.

Expected Storm Total Rainfall and Chance of Rainfall Flooding



Tropical Analysis and Forecast Branch
NWS National Hurricane Center

Images from NWS Weather Prediction Center



Risk of rainfall exceeding flash flood guidance within 25 miles of a point

HIGH: > 50% **SLGT: 10%-20%**
MDT: 20%-50% **MRGL: 5%-10%**

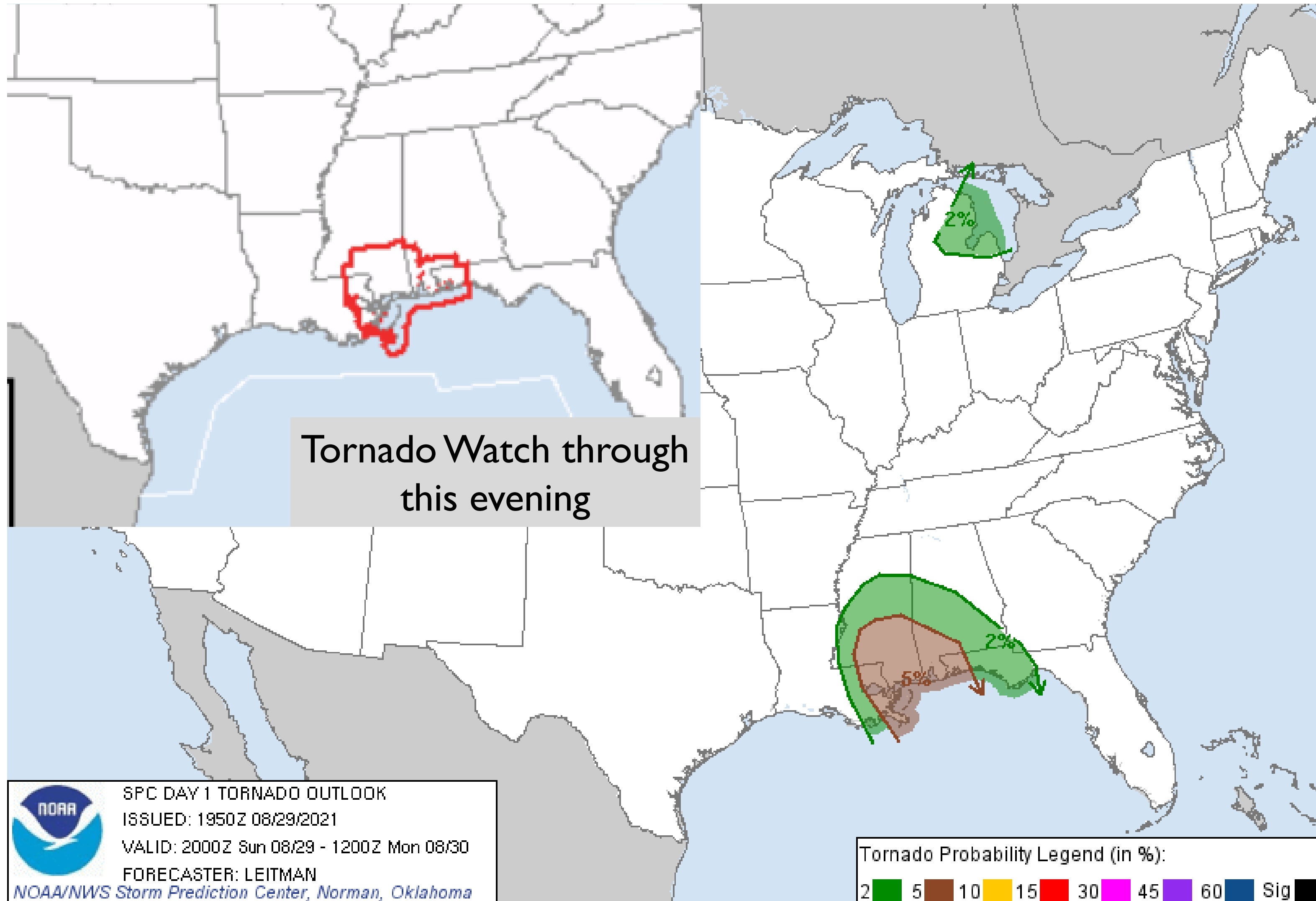
Refer to map legend for Valid Time

Tornado Outlook – Day 1

Image from NWS Storm Prediction Center



Tropical Analysis and Forecast Branch
NWS National Hurricane Center




- Tornadoes will be most likely through Monday over southeast Louisiana, southern Mississippi, southwest Alabama, and the western Florida Panhandle.

Key Messages

Hurricane Ida

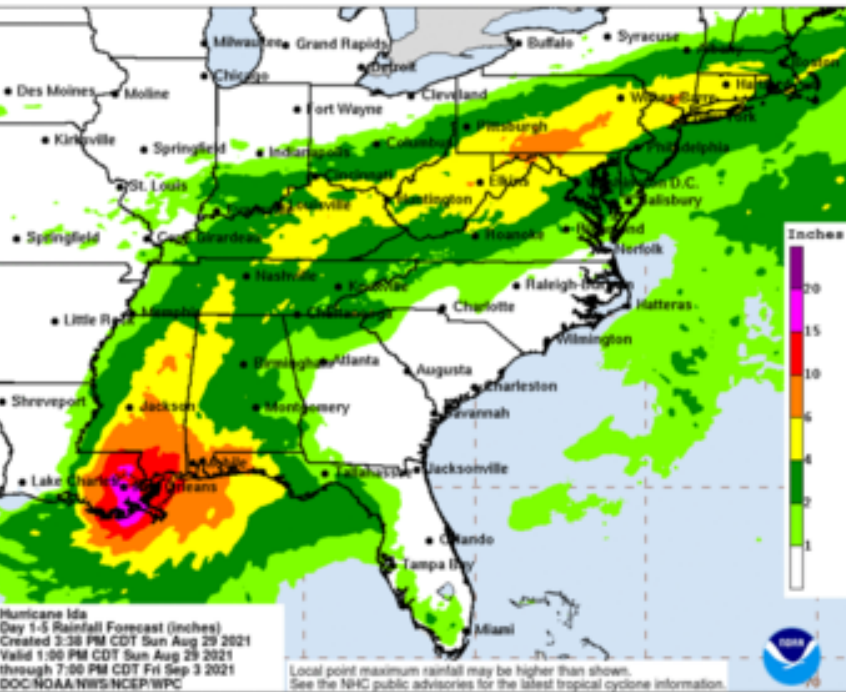
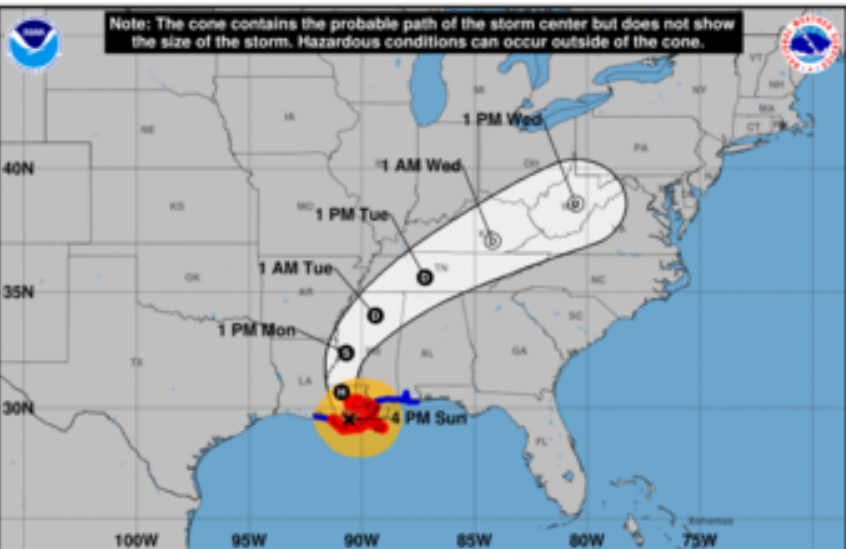


Tropical Analysis and Forecast Branch
NWS National Hurricane Center



Key Messages for Hurricane Ida

Advisory 15: 4:00 PM CDT Sun Aug 29, 2021



1. Extremely life-threatening storm surge inundation of 9 feet or greater above ground level will continue through early this evening along portions of the coast between Burns Point, Louisiana, to Ocean Springs, Mississippi. Overtopping of local levees outside of the Hurricane and Storm Damage Risk Reduction System is possible where local inundation values may be higher.

2. Catastrophic wind damage will occur near the core of Ida as it moves inland over southeastern Louisiana during the next few hours. Hurricane-force winds and damaging wind gusts are expected through tonight within the Hurricane Warning area in southeastern Louisiana, including metropolitan New Orleans.

3. Damaging winds, especially in gusts, will spread inland near the track of the center of Ida into southwestern Mississippi tonight and early Monday. These winds will likely lead to widespread tree damage and power outages.

4. Ida will continue to produce heavy rainfall through Monday across the central Gulf Coast across southeast Louisiana, coastal Mississippi, and southwestern Alabama, resulting in considerable to life-threatening flash and urban flooding and significant river flooding impacts. As Ida moves inland, significant flooding impacts are possible across portions of the Lower Mississippi Valley, Tennessee Valley, Upper Ohio Valley, Central Appalachians, and Mid-Atlantic through Wednesday.

For more information go to hurricanes.gov

Marine Key Messages:

- Seas are quickly subsiding along the Louisiana coast and expected to drop below 12 ft by early Monday morning
- Tropical Storm force winds will end along the Louisiana and Mississippi Gulf Coast by tonight around midnight

IMPACTS FOR D8 (through next 5 days)

Winds – **Extreme**

Storm Surge – **Extreme**

Rainfall/Flash Flooding – **Extreme**

Tornadoes – **Moderate**

Waves - **Extreme**



HURRICANE IDA BRIEFING

You can contact the Tropical Analysis and Forecast Branch at
305-229-4424

*The Next Briefing Will Be:
Monday 8:00 AM CDT*

You can always find get the latest graphics and information for this storm at www.hurricanes.gov



NHC_TAFB

www.nhc.noaa.gov