

IMPACTS FOR **USCG District 8**

Winds – **LOW**

Storm Surge – **LOW**

Rainfall/Flash Flooding – **MEDIUM**

Tornadoes – **LOW**

Waves - **MEDIUM**

POTENTIAL TROPICAL CYCLONE NINE BRIEFING



11:30 AM CDT
Monday, August 21, 2023

Prepared by:

Jeff Lewitsky

*Tropical Analysis and Forecast Branch
NWS National Hurricane Center*



NHC_TAFB

www.nhc.noaa.gov

Key Messages

Potential Tropical Cyclone Nine



Tropical Analysis and Forecast Branch
NWS National Hurricane Center



Key Messages for Potential Tropical Cyclone Nine

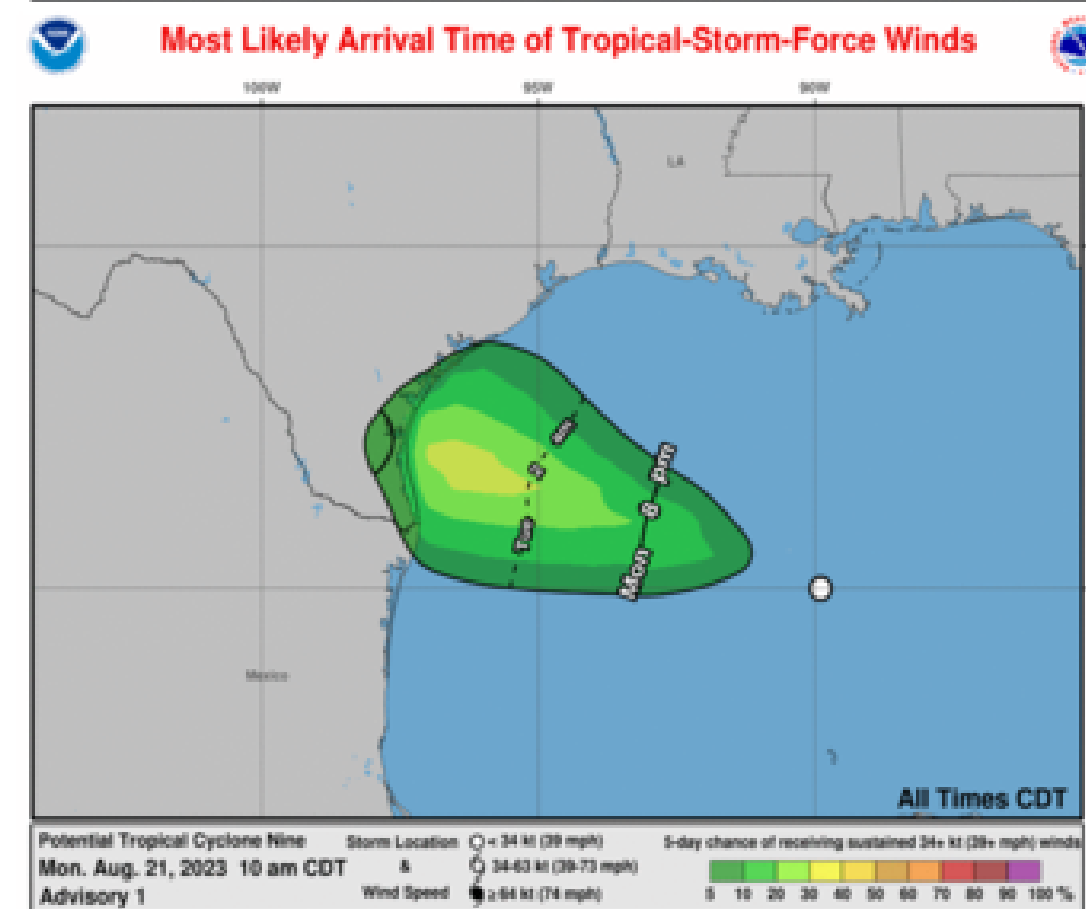
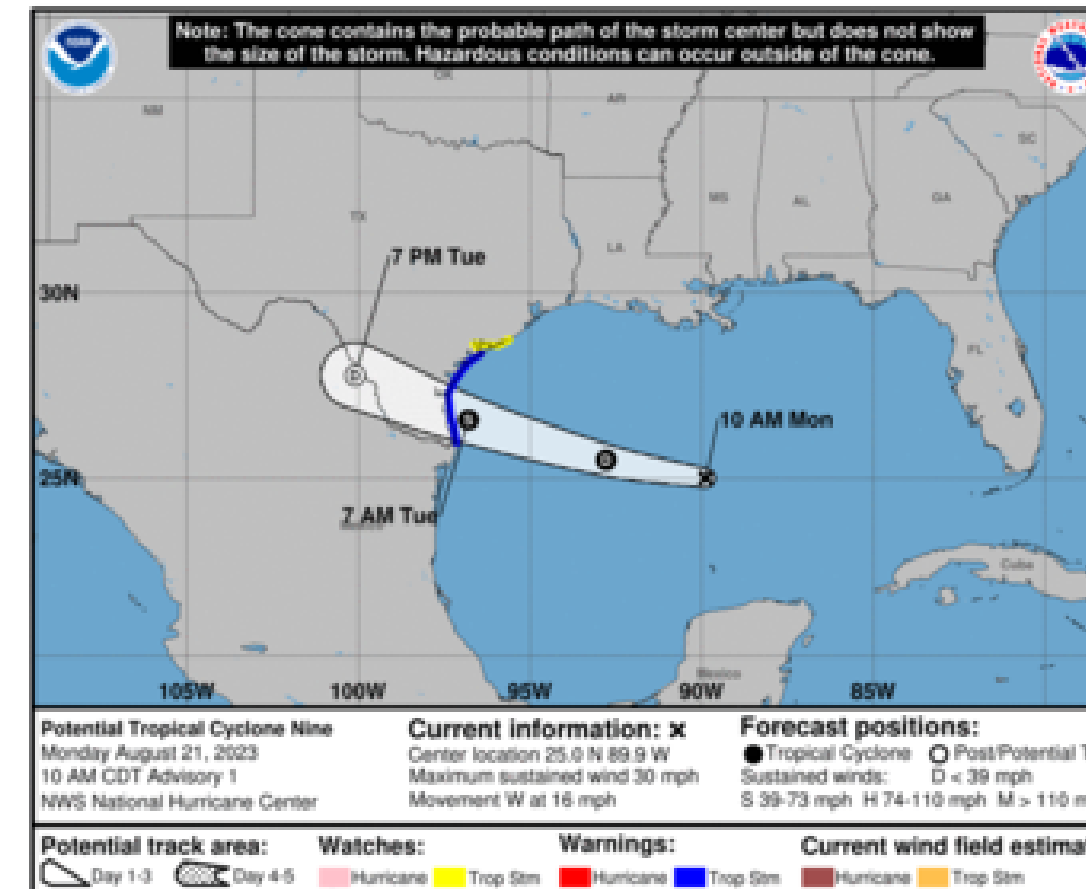
Advisory 1: 10:00 AM CDT Mon Aug 21, 2023



1. Heavy rainfall from Potential Tropical Cyclone Nine is expected across South Texas on Tuesday and Wednesday. The heavy rainfall may produce areas of flash and urban flooding. Across portions of Coahuila and Nuevo Leon in Mexico, flash flooding with possible landslides in mountainous terrain is expected Tuesday into Wednesday.

2. Coastal flooding is possible along the south Texas coast tonight through Tuesday morning.

3. Tropical storm conditions are expected in the warning area and are possible in the watch area beginning Tuesday morning.



For more information go to hurricanes.gov

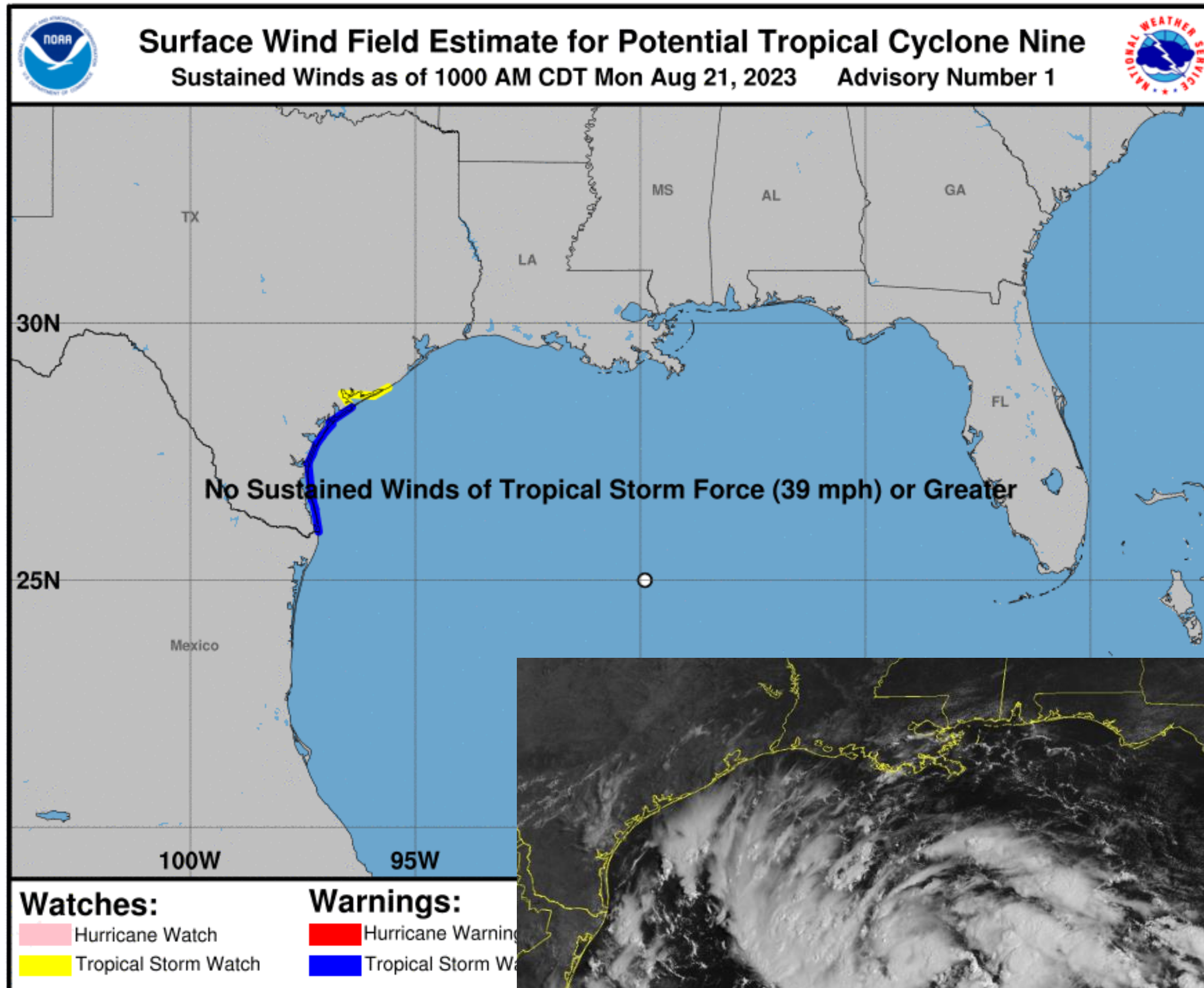
- **TROPICAL STORM WARNING ISSUED FOR PORTIONS OF SOUTH TEXAS**
- **40 KT WINDS AND 14 FT SEAS NEAR THE COAST TUESDAY MORNING**
- **FLOODING RAINS AND COASTAL FLOODING ARE POSSIBLE**

Situation Overview

Potential Tropical Cyclone Nine



Tropical Analysis and Forecast Branch
NWS National Hurricane Center

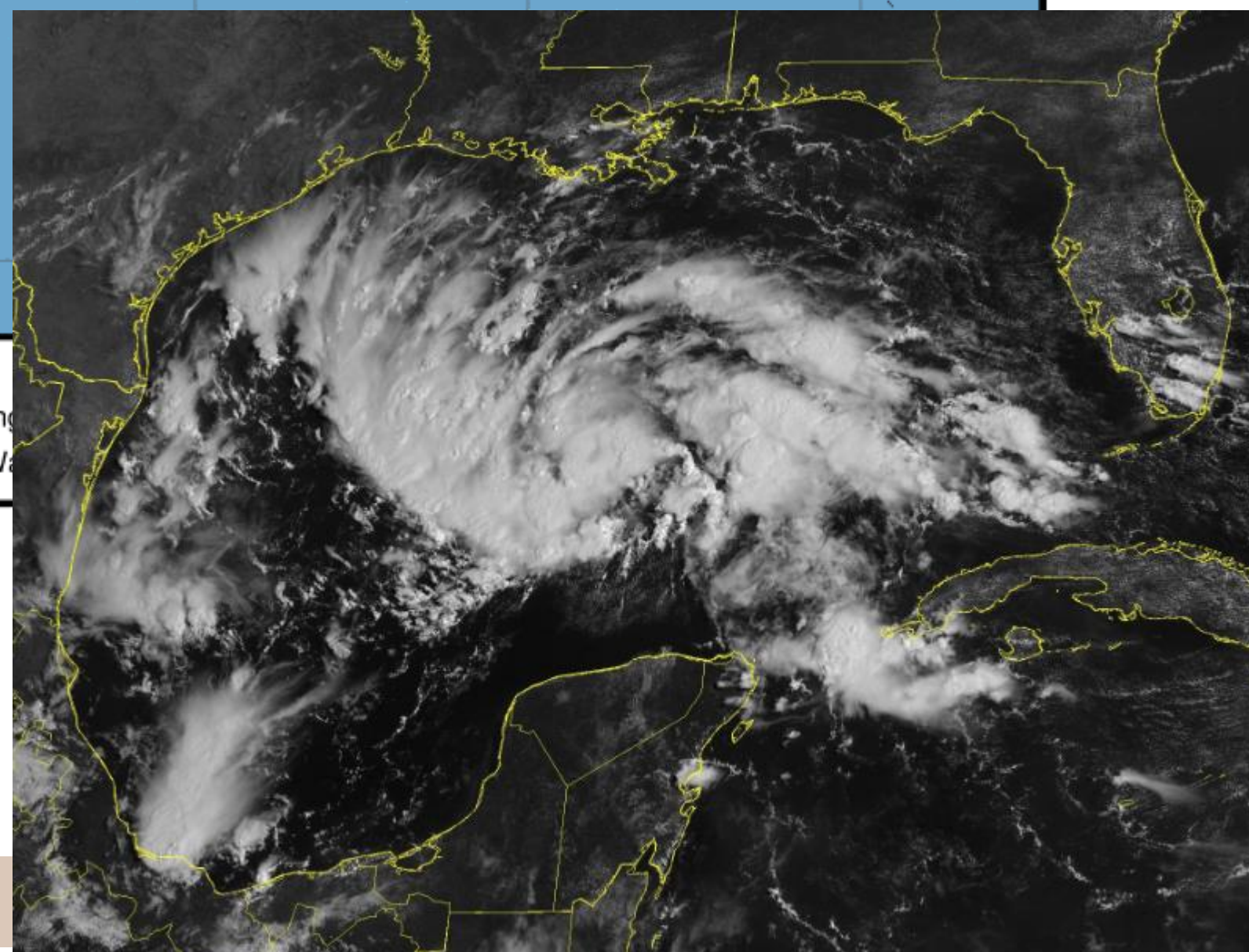


**...TROPICAL STORM WARNING ISSUED
FOR PORTIONS OF SOUTH TEXAS...**

**...FLOODING RAINS AND COASTAL
FLOODING ARE POSSIBLE...**

Summary of 1000 AM CDT Information...

Location... 25.0N 89.9W
ABOUT 480 MI ESE OF PORT MANSFIELD TEXAS
Maximum Sustained Winds... 25 kt
Present Movement... WEST AT 14 kt
Minimum Central Pressure... 1008 mb
Peak Seas... Currently around 8 ft

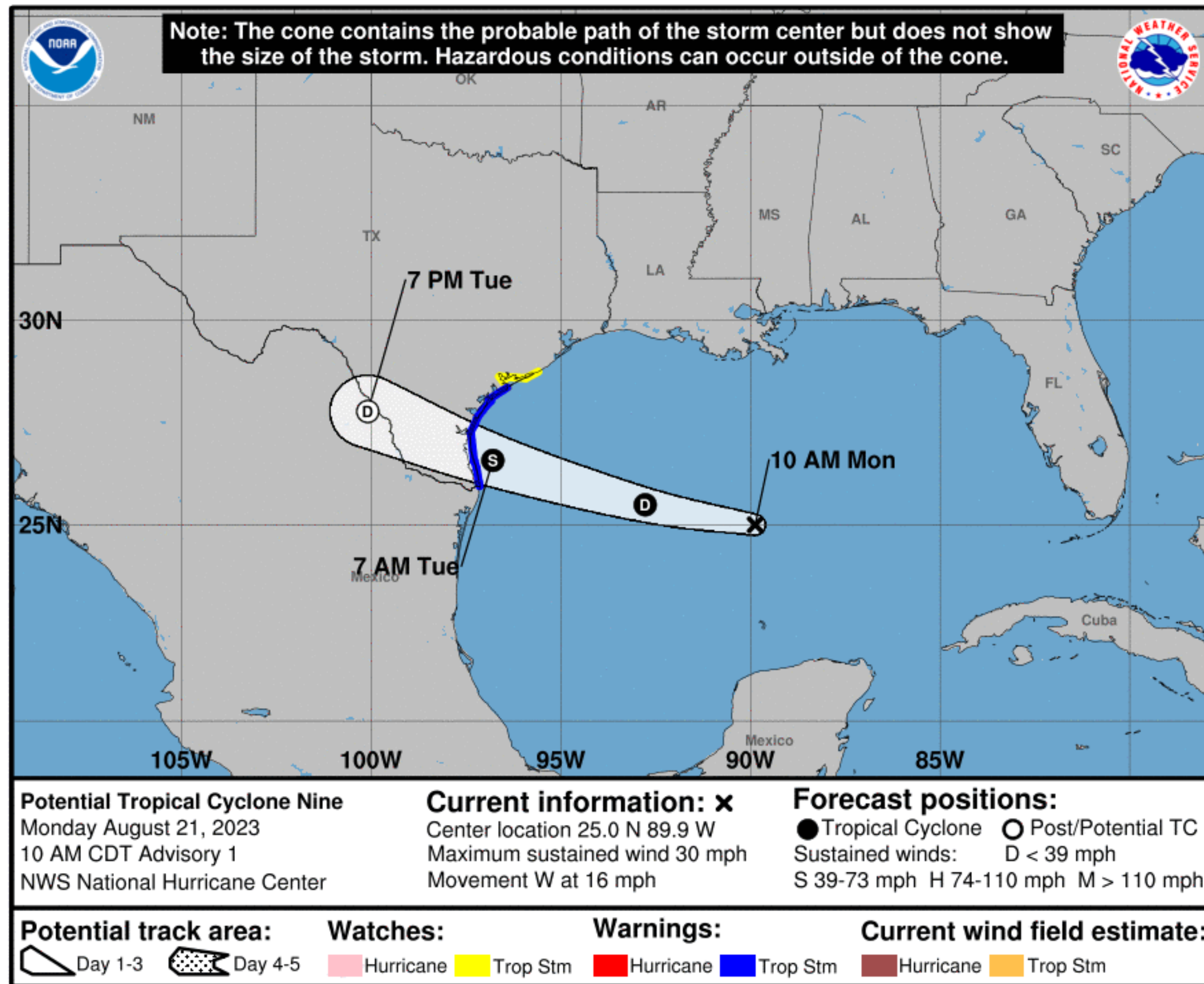


Forecast Information

Potential Tropical Cyclone Nine



Tropical Analysis and Forecast Branch
NWS National Hurricane Center



NOTE: Do not focus on the exact track. Impacts can occur well outside the area enclosed by the cone.

- **A fast motion to the west is expected to continue, and the system is forecast to move inland over south Texas early Tuesday.**
- **Satellite images indicate that the system is becoming better organized and it is expected to become a tropical depression later today.**
- **Strengthening is forecast, and the system is expected to become a tropical storm before it reaches the Texas coast.**
- Current center forecast positions through the next 5 days (if applicable) illustrated by dots
- White swath of potential track error added to each side of the forecast track through day 3
- Hatched swath of potential track error added to each side of the forecast track days 4-5

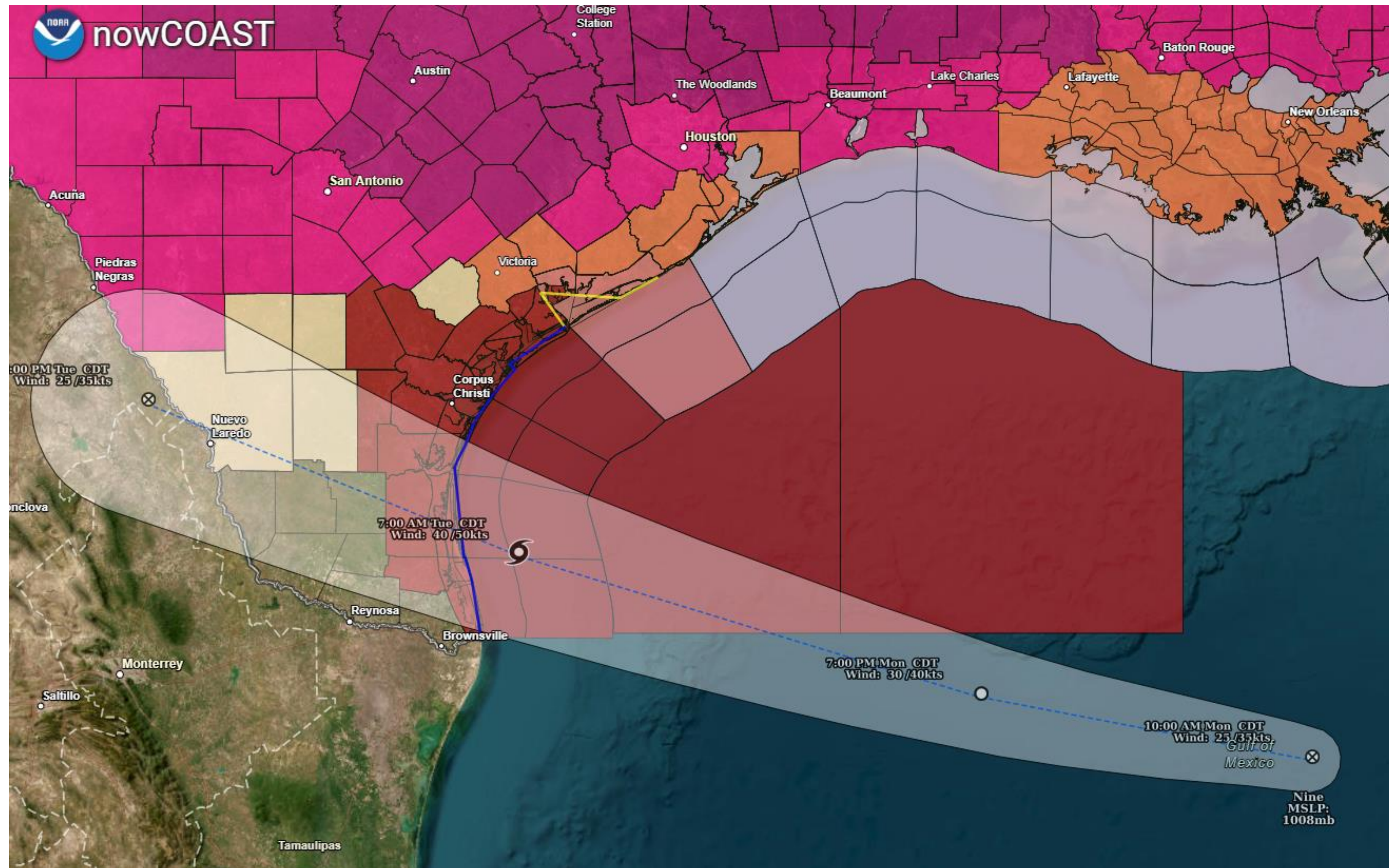
** Swaths are calculated using average track errors and actual track may be well inside, or possibly outside the potential track areas indicated.

Hazards Map

Potential Tropical Cyclone Nine



Tropical Analysis and Forecast Branch
NWS National Hurricane Center

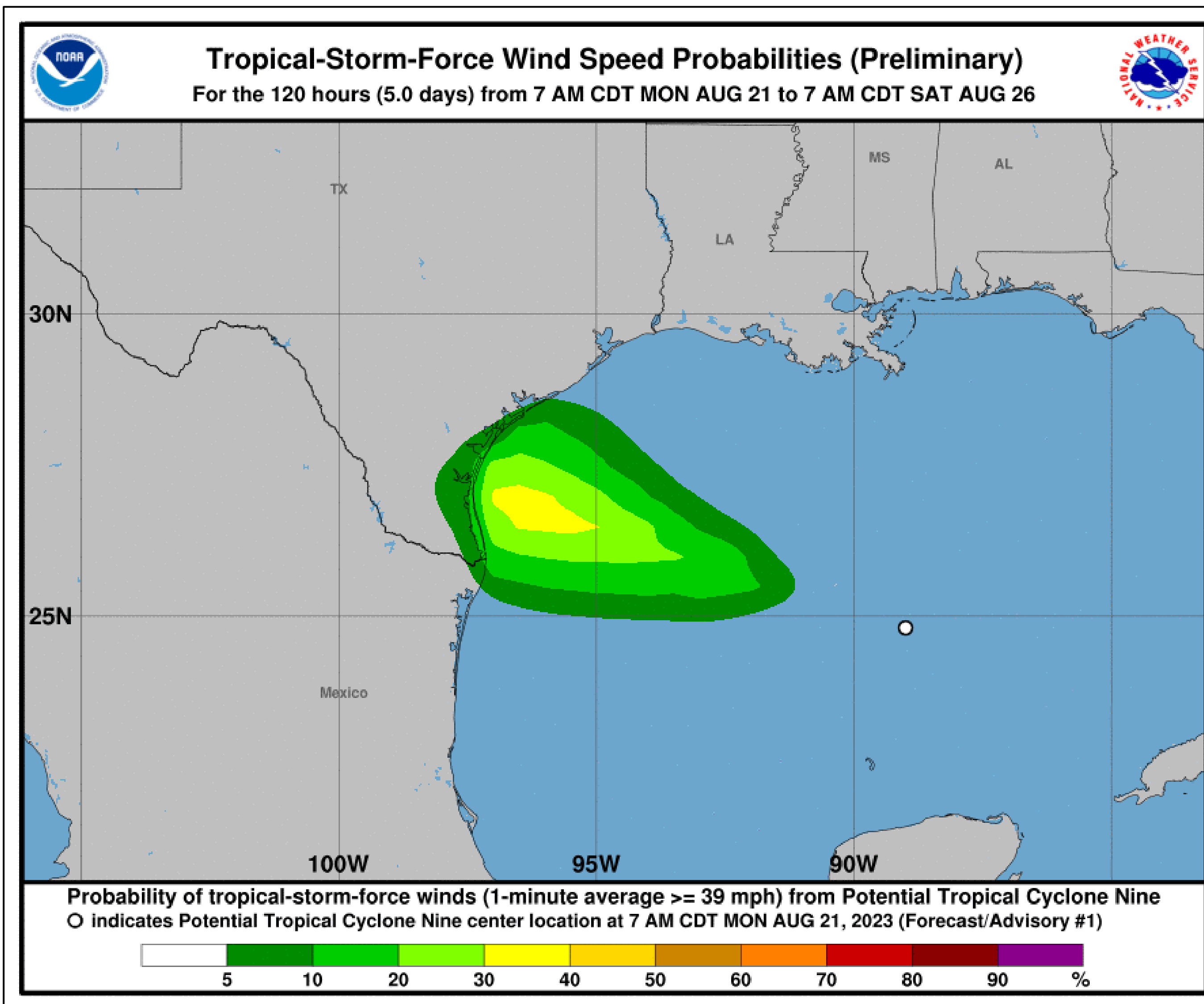


T.S. Wind Speed Probabilities

Potential Tropical Cyclone Nine



Tropical Analysis and Forecast Branch
NWS National Hurricane Center



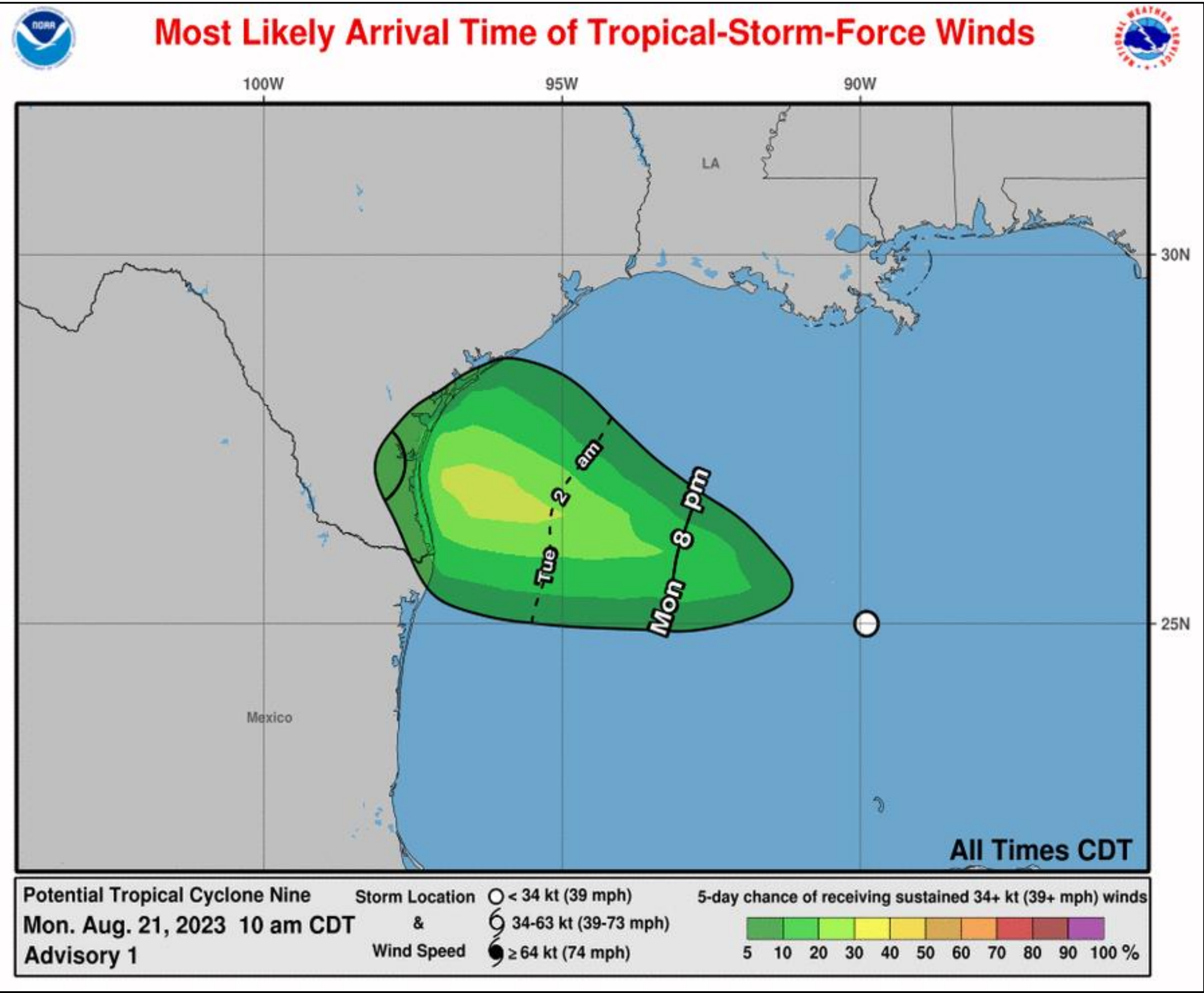
- Port O'Connor 10%
- Aransas Pass 10%
- Corpus Christi 10%
- Port Mansfield 10%
- Port Isabel 15%
- South Padre Island 15%
- Brownsville 10%

*****well below 50% at this time*****

- Probabilities of sustained tropical storm force winds (34 kt to 63 kt) over the next 5 days, based off this cyclone's wind radii and track.
- Clear or dark green are the lowest chances of 0-30%.
- Yellow to orange is 31-70%
- Red through purple are the highest probabilities of 71%-100%
- See the color bar below the image for more details.



Potential Tropical Cyclone Nine



■ **Around Sunrise (7-8am CDT)
Tuesday morning**

****if a location gets TS force wind****

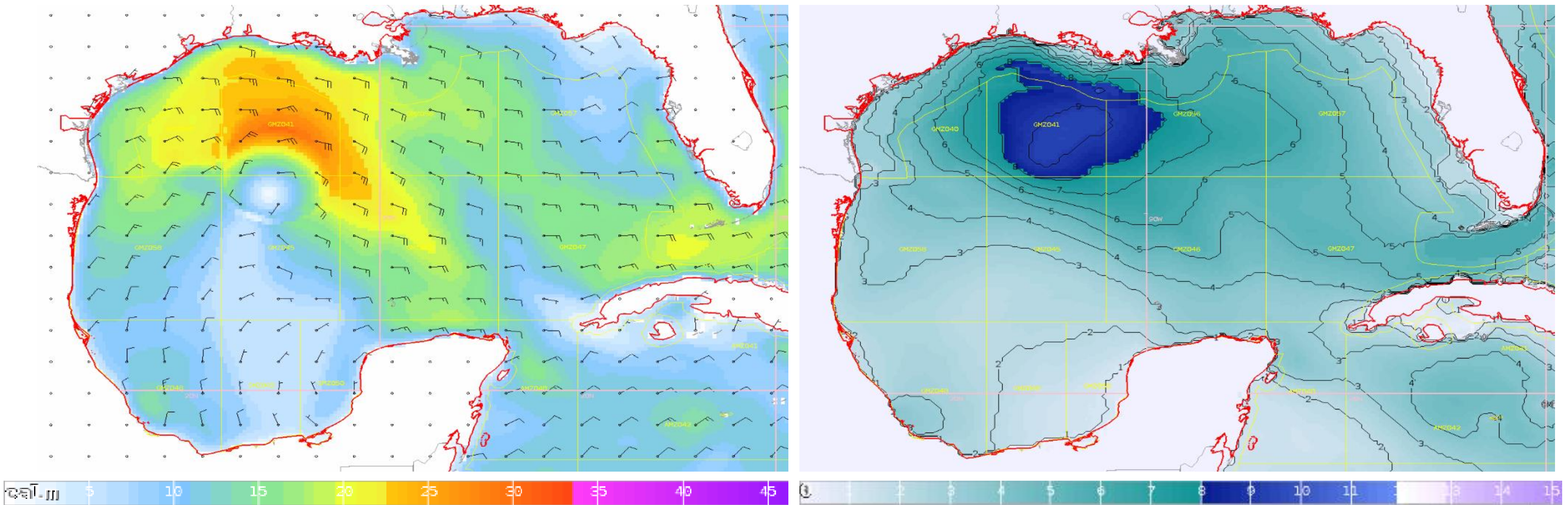
- The most likely time of arrival of Tropical Storm Force Winds (34kt to 63 kt) for this cyclone based off the current track and wind radii.
- Clear or dark green are the lowest chances of 0-30%.
- Yellow to orange is 31-70%
- Red through purple are the highest probabilities of 71%-100%
- See the color bar below the image for more details.

Wind And Waves

Potential Tropical Cyclone Nine



Tropical Analysis and Forecast Branch
NWS National Hurricane Center



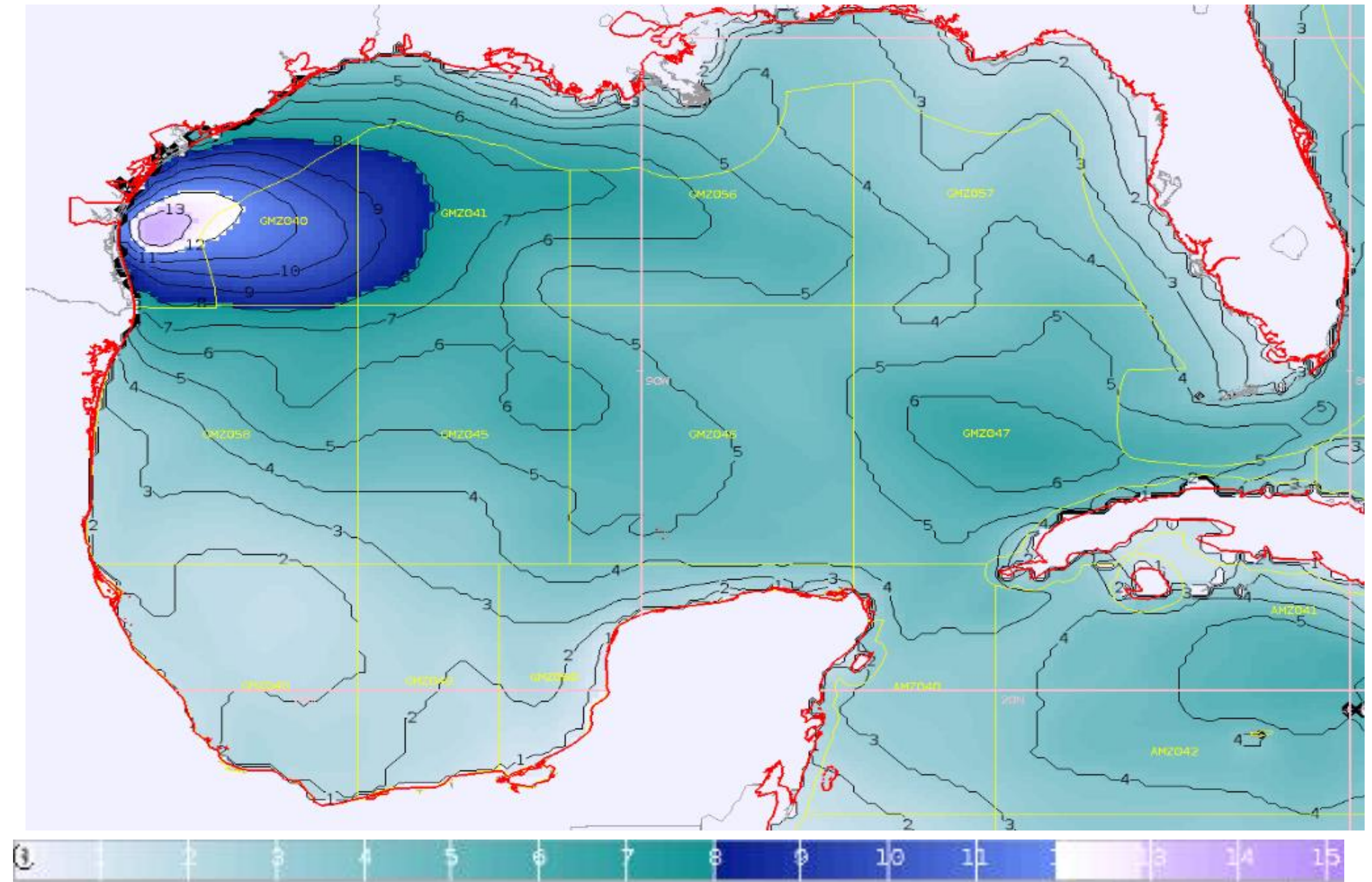
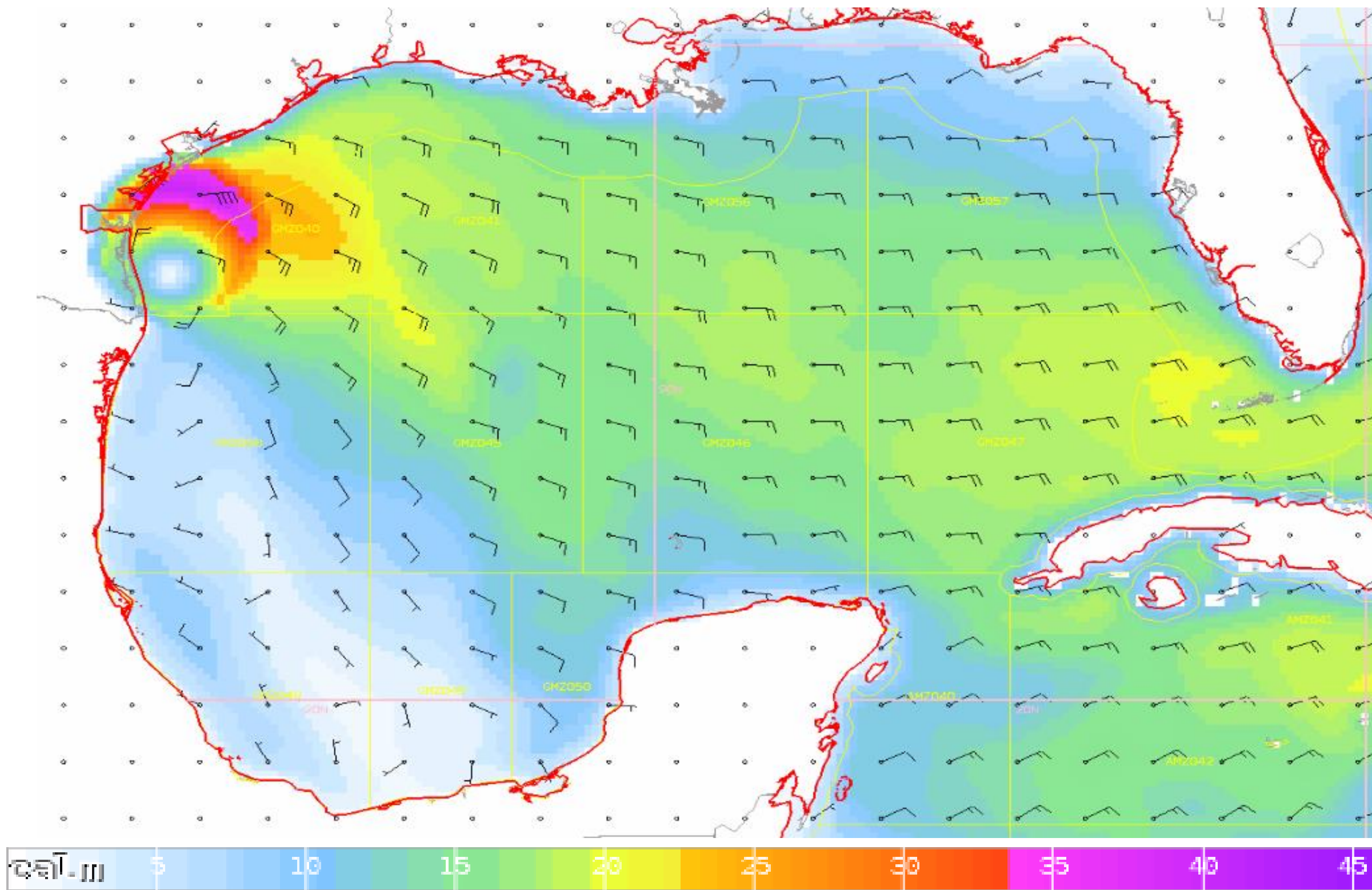
12 Hour Forecast
7pm CDT Monday, August 21st
Peak Winds: 30 kt
Peak Seas: 10 ft

Wind And Waves

Potential Tropical Cyclone Nine



Tropical Analysis and Forecast Branch
NWS National Hurricane Center



24 Hour Forecast

7am CDT Tuesday, August 22nd

Peak Winds: 40 kt

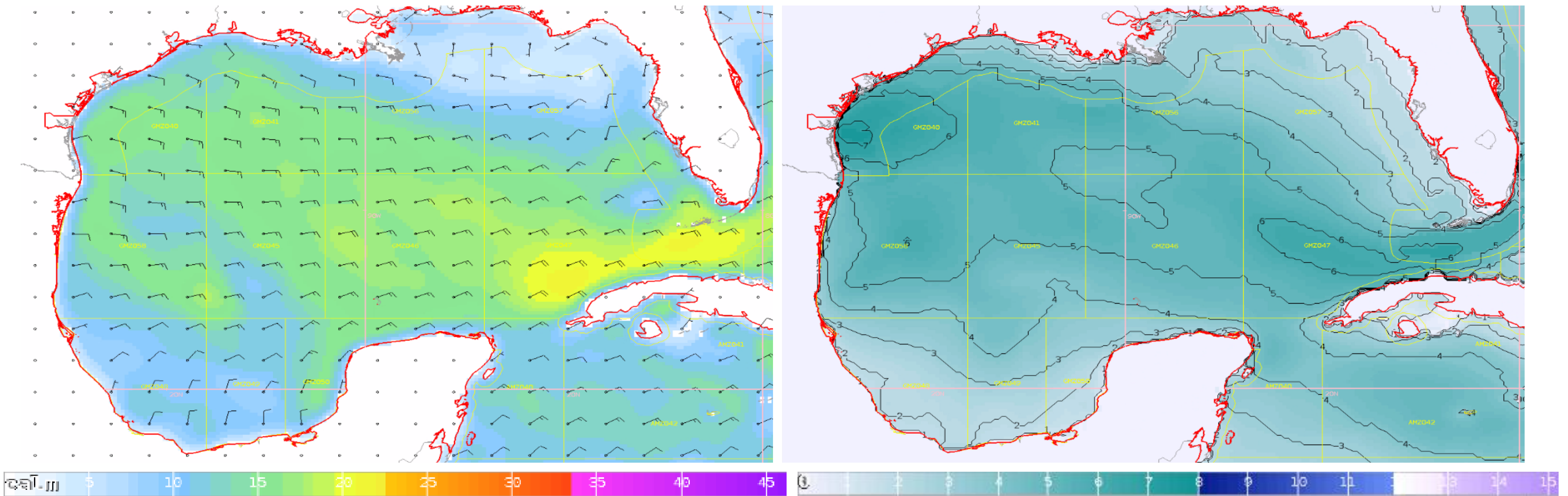
Peak Seas: 14 ft

Wind And Waves

Potential Tropical Cyclone Nine



Tropical Analysis and Forecast Branch
NWS National Hurricane Center



36 Hour Forecast

7pm CDT Tuesday, August 22nd

Peak Winds: 25 kt (inland)

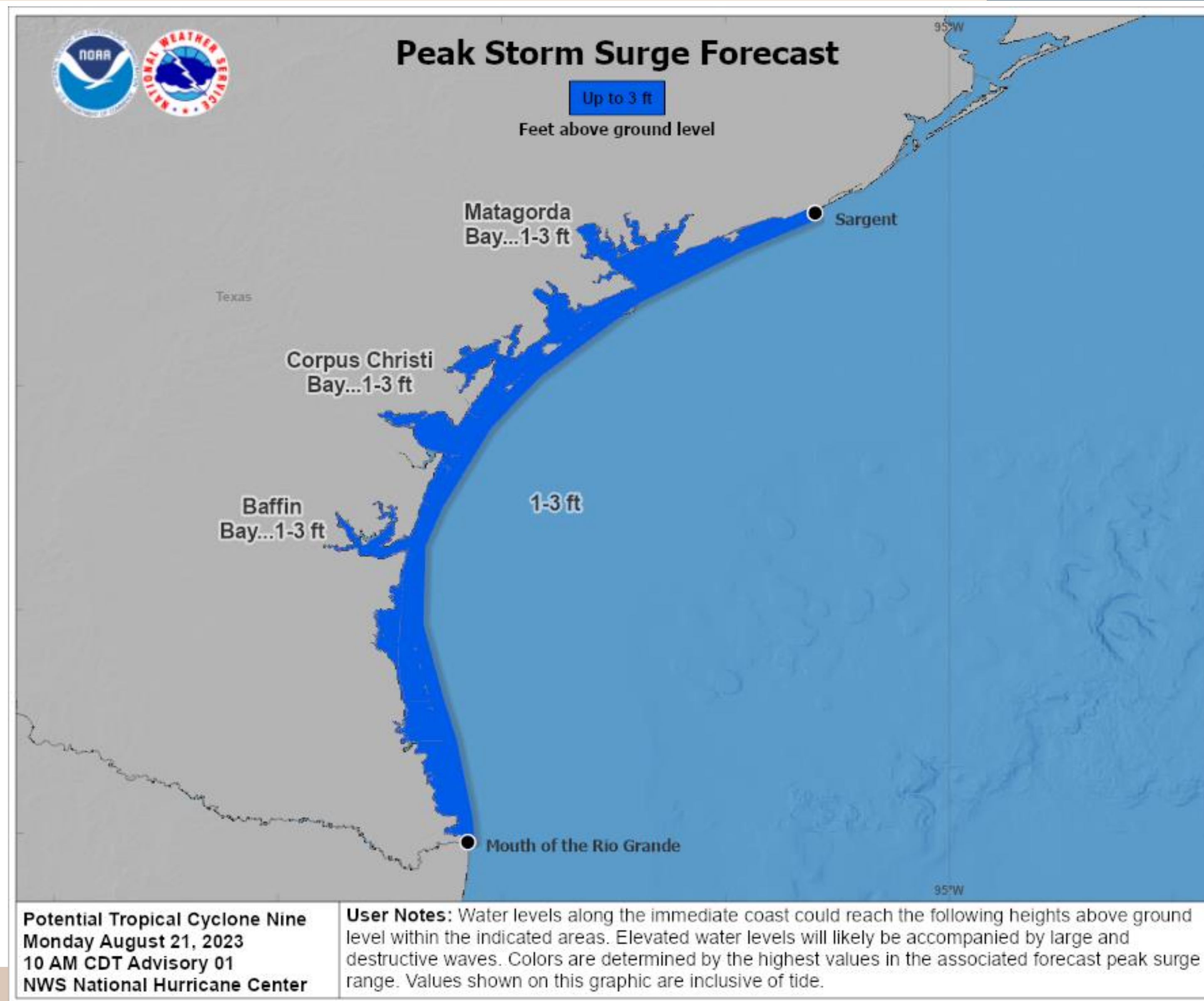
Peak Seas: 7 ft

Potential Storm Surge

Potential Tropical Cyclone Nine



Tropical Analysis and Forecast Branch
NWS National Hurricane Center



8/21/2023 12:01 PM

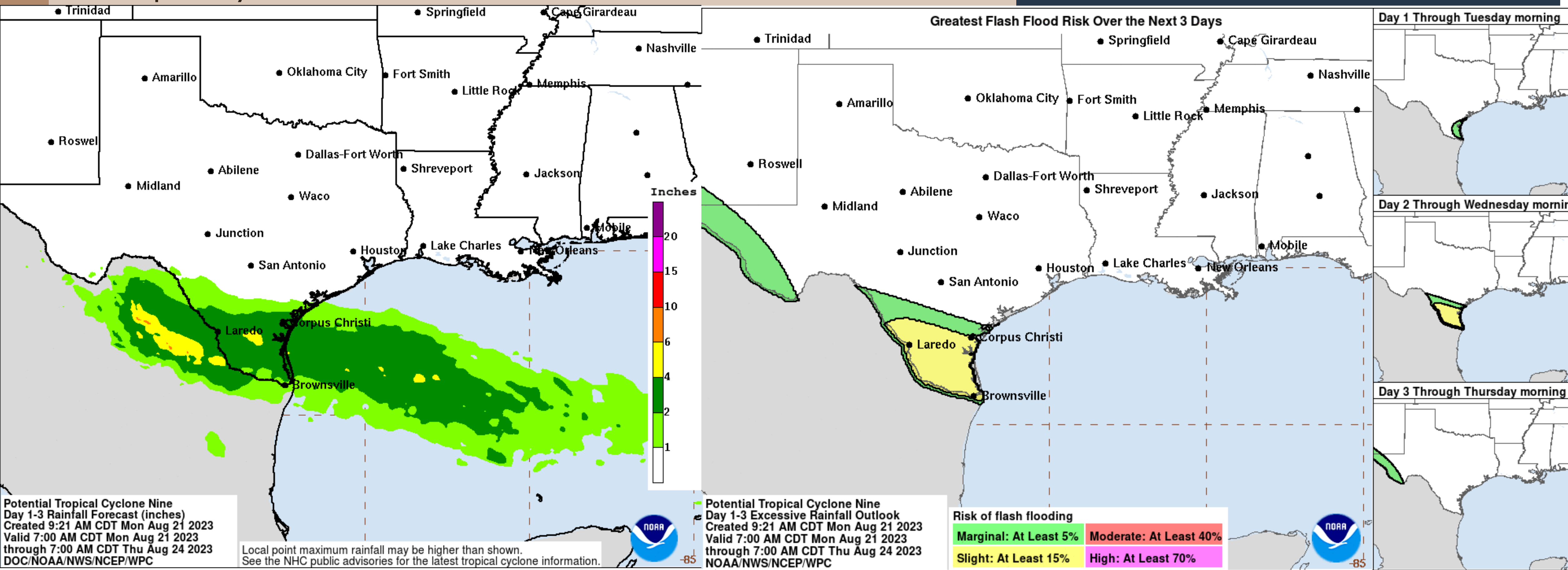
www.nhc.noaa.gov

Expected Rainfall and Chance of Rainfall Flooding



Tropical Analysis and Forecast Branch
NWS National Hurricane Center

Potential Tropical Cyclone Nine Images from NWS Weather Prediction Center



**Valid 700 AM CDT Mon Aug 21
through
700 AM CDT Thu Aug 24**

Risk of rainfall exceeding flash flood guidance
within 25 miles of a point

HIGH: > 50% **SLGT: 10%-20%**
MDT: 20%-50% **MRGL: 5%-10%**

Refer to map legend for Valid Time

Key Messages

Potential Tropical Cyclone Nine



Tropical Analysis and Forecast Branch
NWS National Hurricane Center



Key Messages for Potential Tropical Cyclone Nine

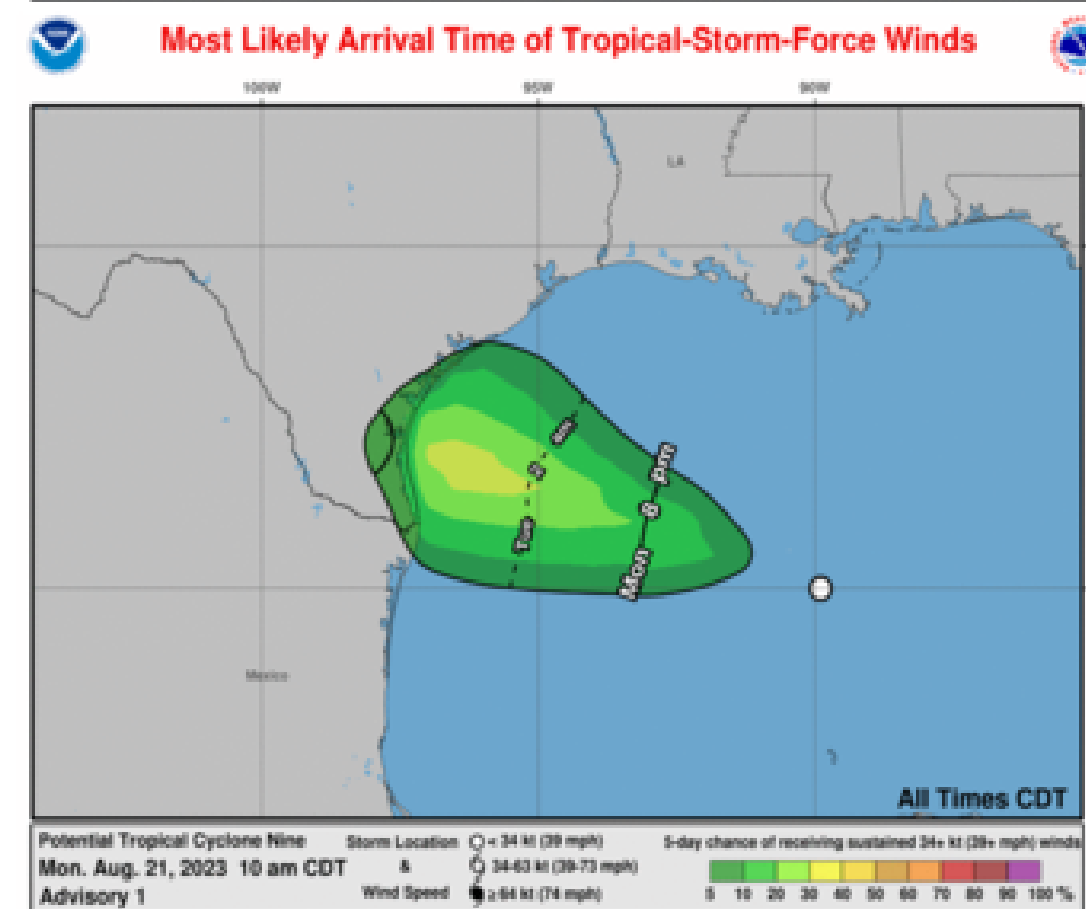
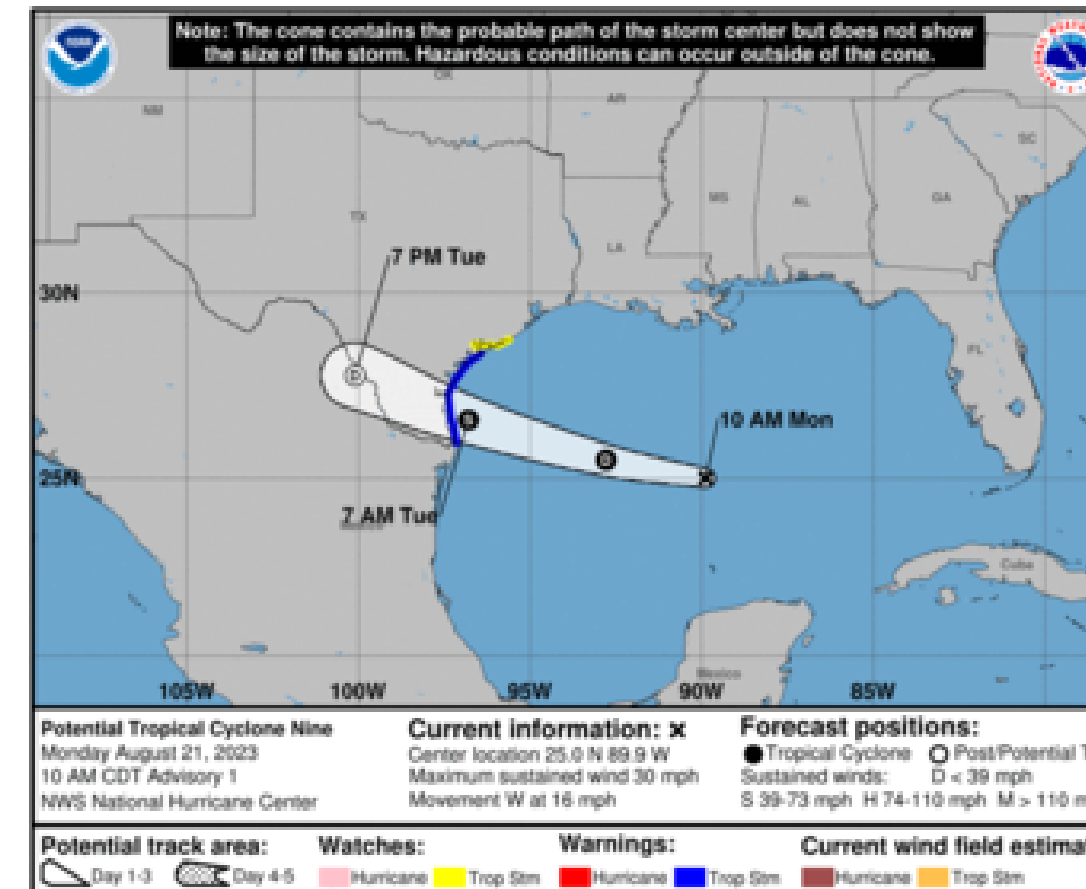
Advisory 1: 10:00 AM CDT Mon Aug 21, 2023



1. Heavy rainfall from Potential Tropical Cyclone Nine is expected across South Texas on Tuesday and Wednesday. The heavy rainfall may produce areas of flash and urban flooding. Across portions of Coahuila and Nuevo Leon in Mexico, flash flooding with possible landslides in mountainous terrain is expected Tuesday into Wednesday.

2. Coastal flooding is possible along the south Texas coast tonight through Tuesday morning.

3. Tropical storm conditions are expected in the warning area and are possible in the watch area beginning Tuesday morning.



For more information go to hurricanes.gov

- **TROPICAL STORM WARNING ISSUED FOR PORTIONS OF SOUTH TEXAS**
- **40 KT WINDS AND 14 FT SEAS NEAR THE COAST TUESDAY MORNING**
- **FLOODING RAINS AND COASTAL FLOODING ARE POSSIBLE**



POTENTIAL TROPICAL CYCLONE NINE BRIEFING

You can contact the Tropical Analysis and Forecast Branch at
305-229-4424

*The Next Briefing Will Be:
Tuesday 11:30 AM CDT (or as needed)*

You can always find get the latest graphics and information for this storm at www.hurricanes.gov



NHC_TAFB

www.nhc.noaa.gov