

## IMPACTS FOR D8

Winds – **High**

Storm Surge – **High**

Rainfall/Flash Flooding – **Moderate**

Tornadoes – **Low**

Waves - **High**

# TROPICAL STORM MARCO AND LAURA BRIEFING



11:00 AM CDT  
Monday, August 24, 2020

Prepared by:  
Chris Landsea

*Tropical Analysis and Forecast Branch  
NWS National Hurricane Center*

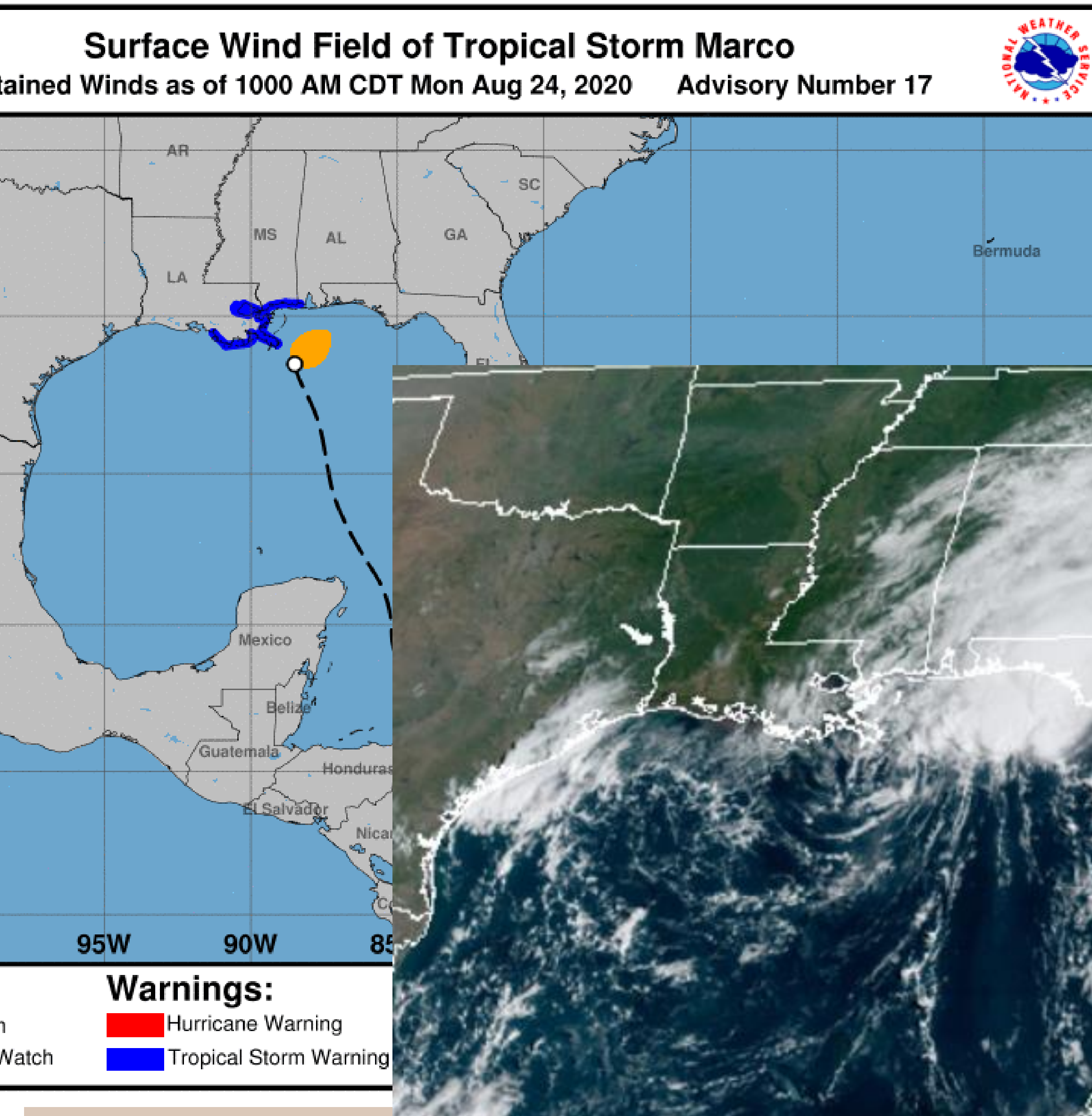


# Situation Overview

Tropical Storm Marco



Tropical Analysis and Forecast Branch  
NWS National Hurricane Center



**...MARCO CONTINUES TO PRODUCE HEAVY RAINFALL AND GUSTY WINDS ALONG PORTIONS OF THE NORTHERN GULF COAST...**

## SUMMARY OF 1000 AM CDT INFORMATION

LOCATION...28.5N 88.5W  
ABOUT 50 NM SE OF THE MOUTH OF THE MISSISSIPPI RIVER  
MAXIMUM SUSTAINED WINDS 45 KT  
PRESENT MOVEMENT...NNW AT 7 MPH

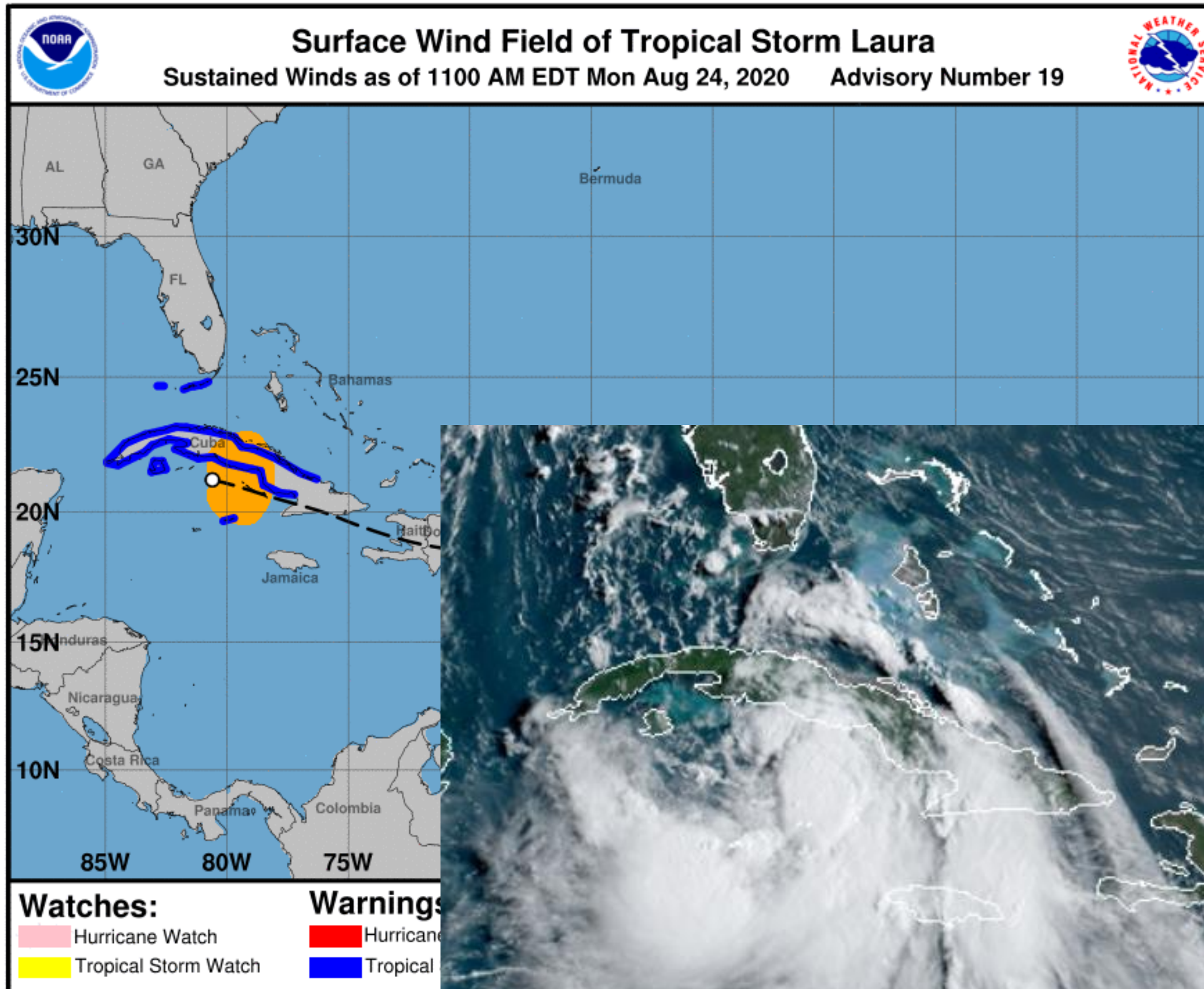
SIZE (IN NM)  
34 KT..... 90NE 0SE 0SW 0NW.  
12 FT SEAS.. 60NE 60SE 60SW 60NW.  
PEAK SEAS 18 FT

# Situation Overview



Tropical Analysis and Forecast Branch  
NWS National Hurricane Center

## Tropical Storm Laura



**...LAURA CONTINUES WEST-NORTHWESTWARD OVER THE FAR NORTHWESTERN CARIBBEAN SEA...  
...HEAVY RAINFALL AND FLASH FLOODING CONTINUES OVER JAMAICA, THE CAYMAN ISLANDS, AND PORTIONS OF CUBA...**

### SUMMARY OF 1000 AM CDT INFORMATION

-----  
LOCATION...21.2N 80.6W  
ABOUT 55 NM ESE OF CAYO LARGO  
ABOUT 125 NE E OF THE ISLE OF YOUTH  
MAXIMUM SUSTAINED WINDS 50 KT  
PRESENT MOVEMENT...WNW AT 17 KT

SIZE (IN NM)  
50 KT..... 40NE 50SE 0SW 0NW.  
34 KT..... 150NE 140SE 0SW 0NW.  
12 FT SEAS..330NE 0SE 0SW 0NW.  
PEAK SEAS 15 FT

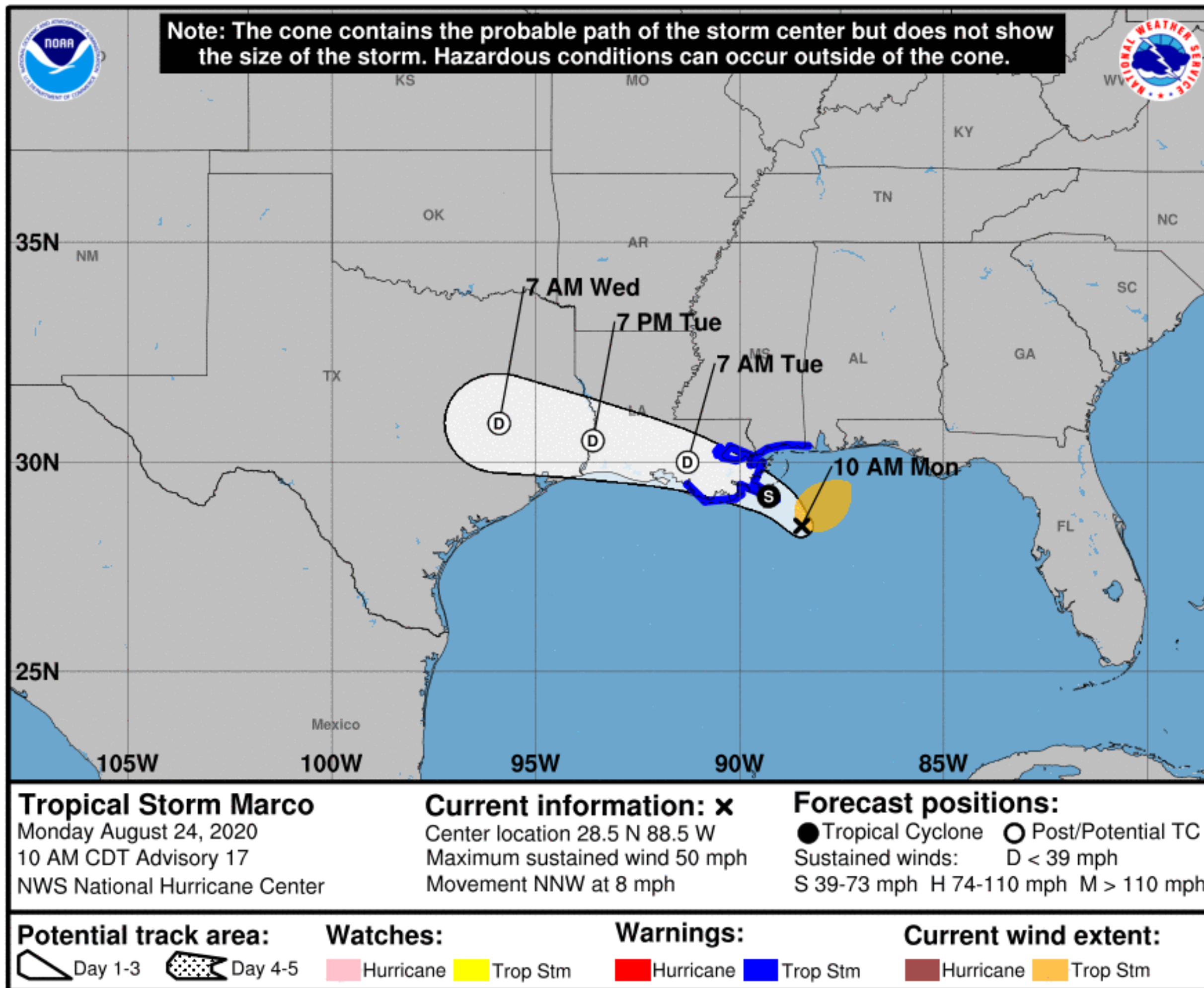


# Forecast Information

## Tropical Storm Marco



Tropical Analysis and Forecast Branch  
NWS National Hurricane Center



- Marco is expected to turn toward the WNW later today and steadily move westward until dissipation
- Landfall is expected tonight as a tropical storm in SE Louisiana
- Marco will quickly weak after landfall
- Current center forecast positions through the next 3 days illustrated by dots
- White swath of potential track is average track error added to each side of the forecast track through day 3

\*\* Swaths are calculated using average track errors and actual track may be well inside, or possibly outside the potential track areas indicated.

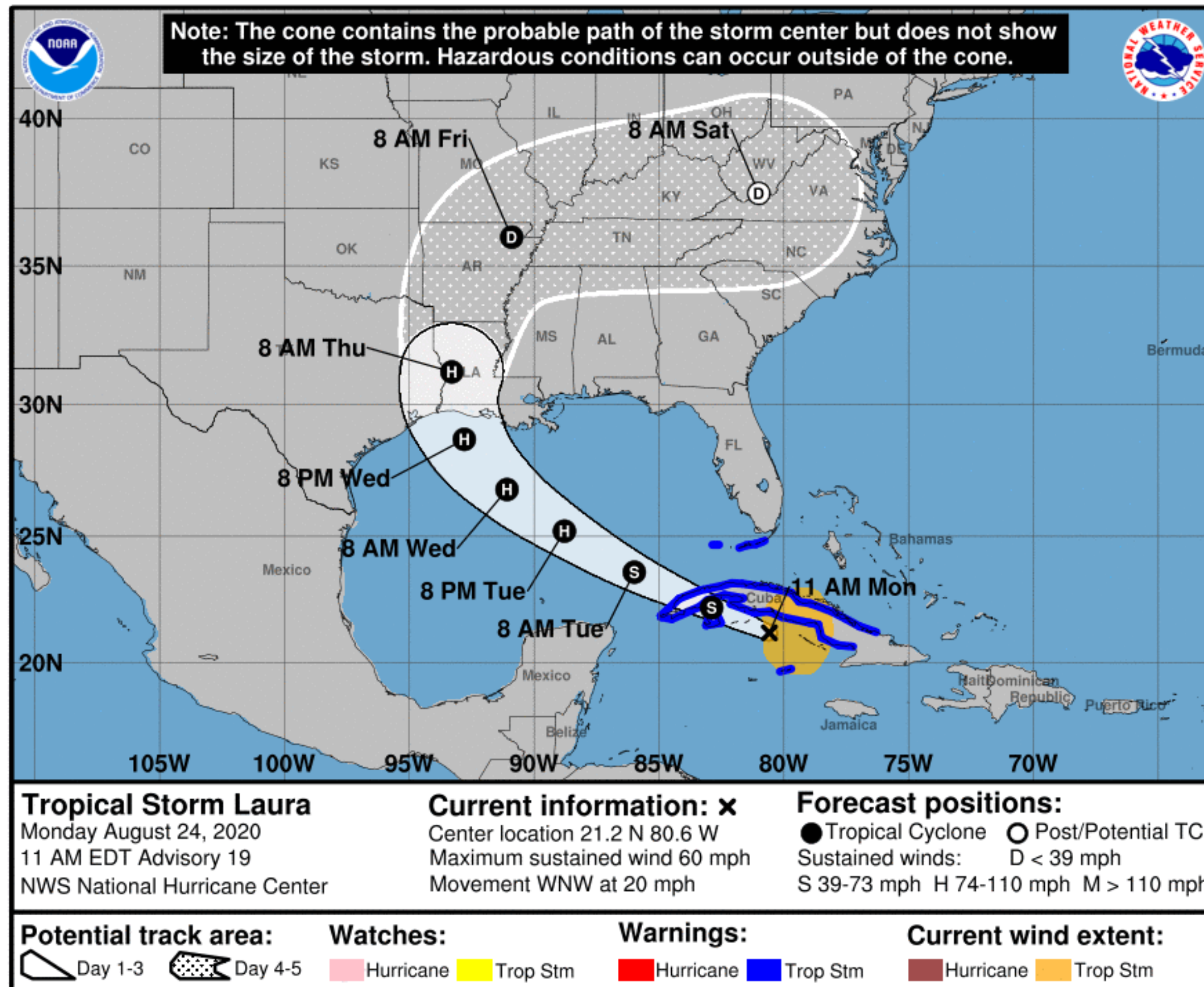
**NOTE:** Do not focus on the exact track. Impacts can occur well outside the area enclosed by the cone.

# Forecast Information

## Tropical Storm Marco and Laura



Tropical Analysis and Forecast Branch  
NWS National Hurricane Center



**NOTE:** Do not focus on the exact track. Impacts can occur well outside the area enclosed by the cone.

- Laura should continue quickly toward the WNW through Tuesday, then turn northward on Wednesday
- Once the system reaches the Gulf of Mexico, it should intensify to a hurricane
- Landfall is likely to occur in Louisiana or Texas sometime late Wednesday or early Thursday anywhere from Category 1 through 3 hurricane
- Current center forecast positions through the next 5 days (if applicable) illustrated by dots
- White swath of potential track is average track error added to each side of the forecast track through day 3
- Hatched swath of potential track is average track error added to each side of the forecast track days 4-5

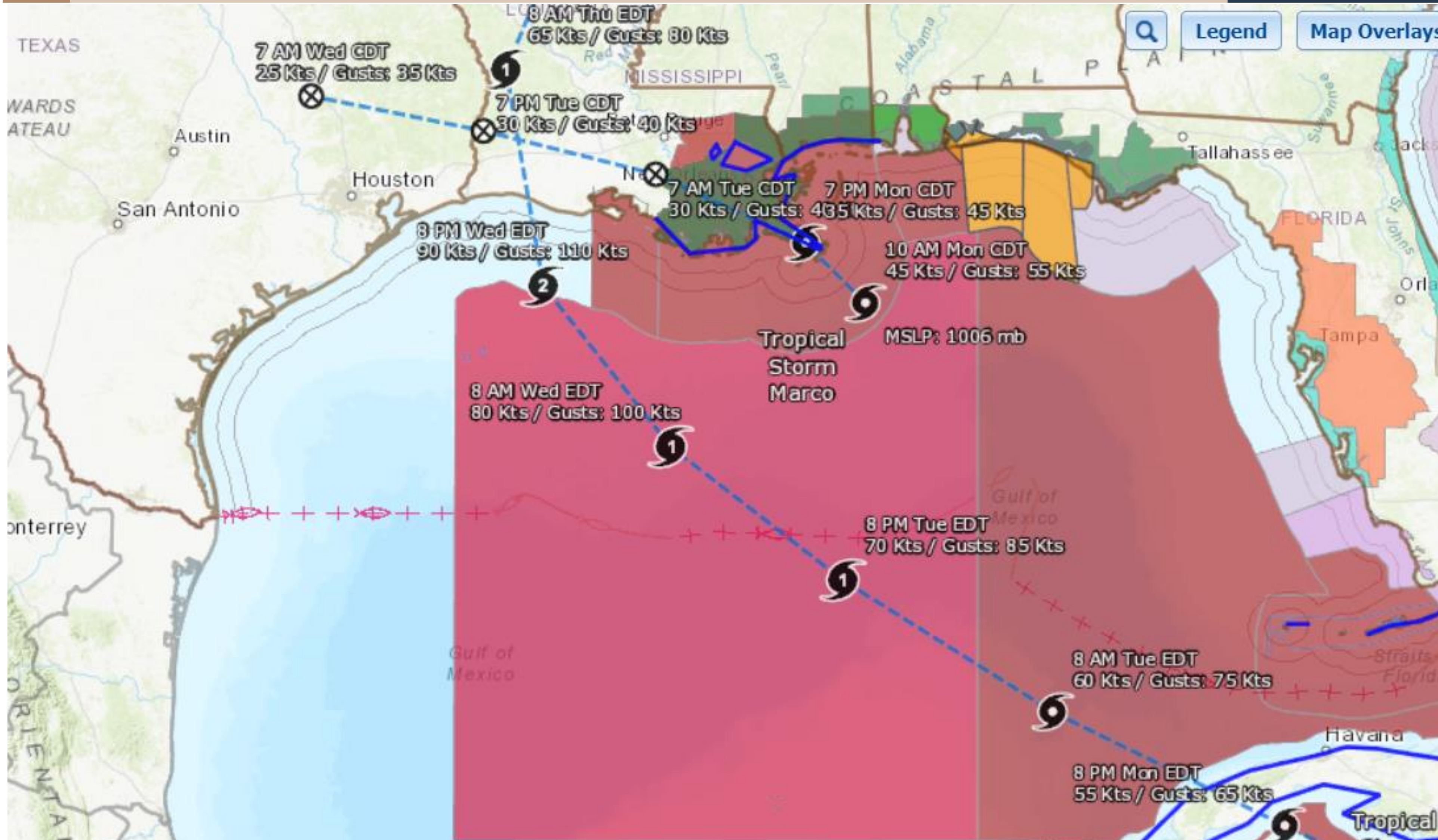
\*\* Swaths are calculated using average track errors and actual track may be well inside, or possibly outside the potential track areas indicated.

# Hazards Map

Tropical Storm Marco and Laura



Tropical Analysis and Forecast Branch  
NWS National Hurricane Center



- Hurricane Warning
- Tropical Storm Warning
- Hurricane Watch
- Gale Warning
- Small Craft Advisory
- Flash Flood Watch
- Special Marine Warning

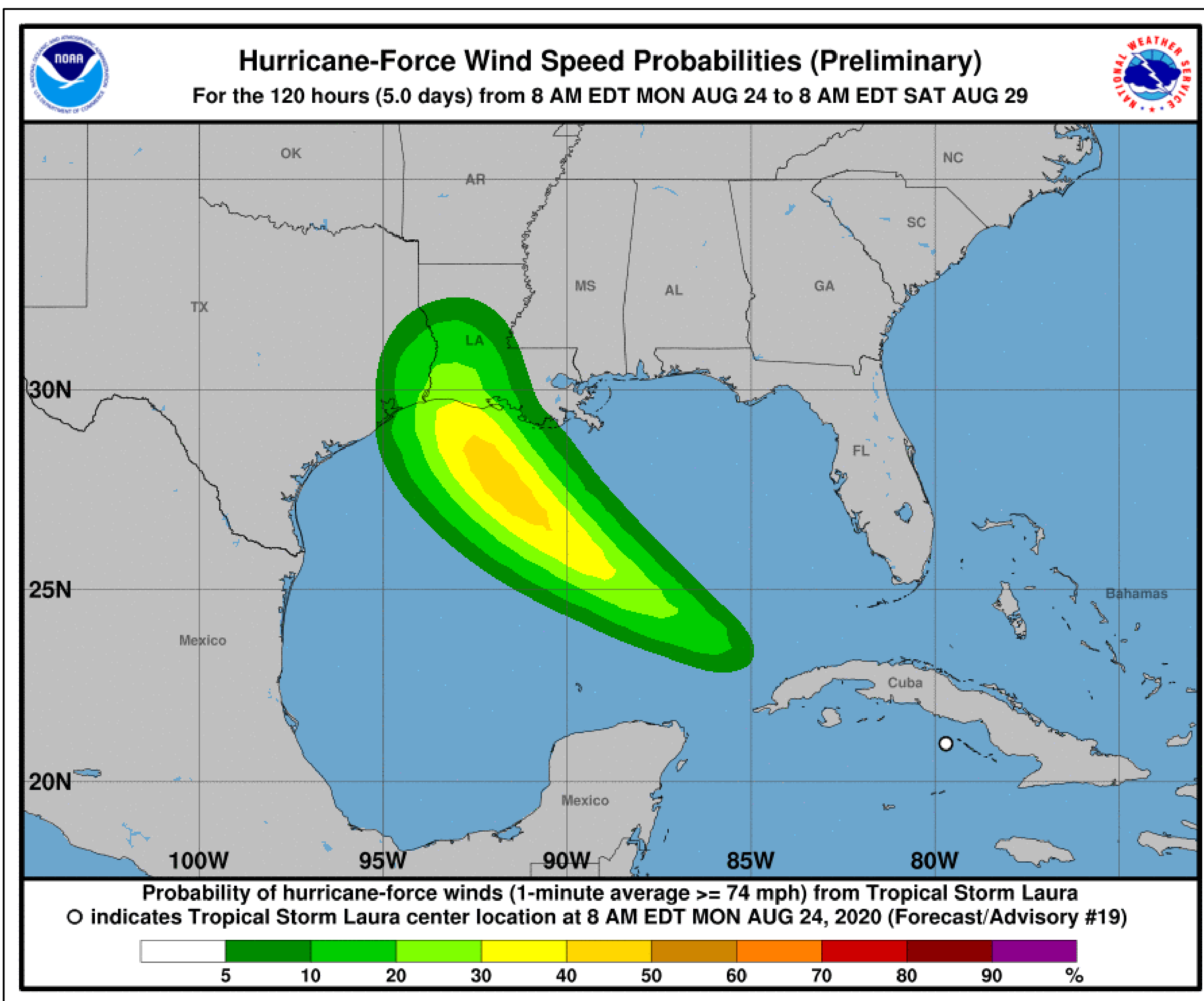
<https://nowcoast.noaa.gov/>

# Hurricane Wind Speed Probabilities



Tropical Analysis and Forecast Branch  
NWS National Hurricane Center

Tropical Storm Laura



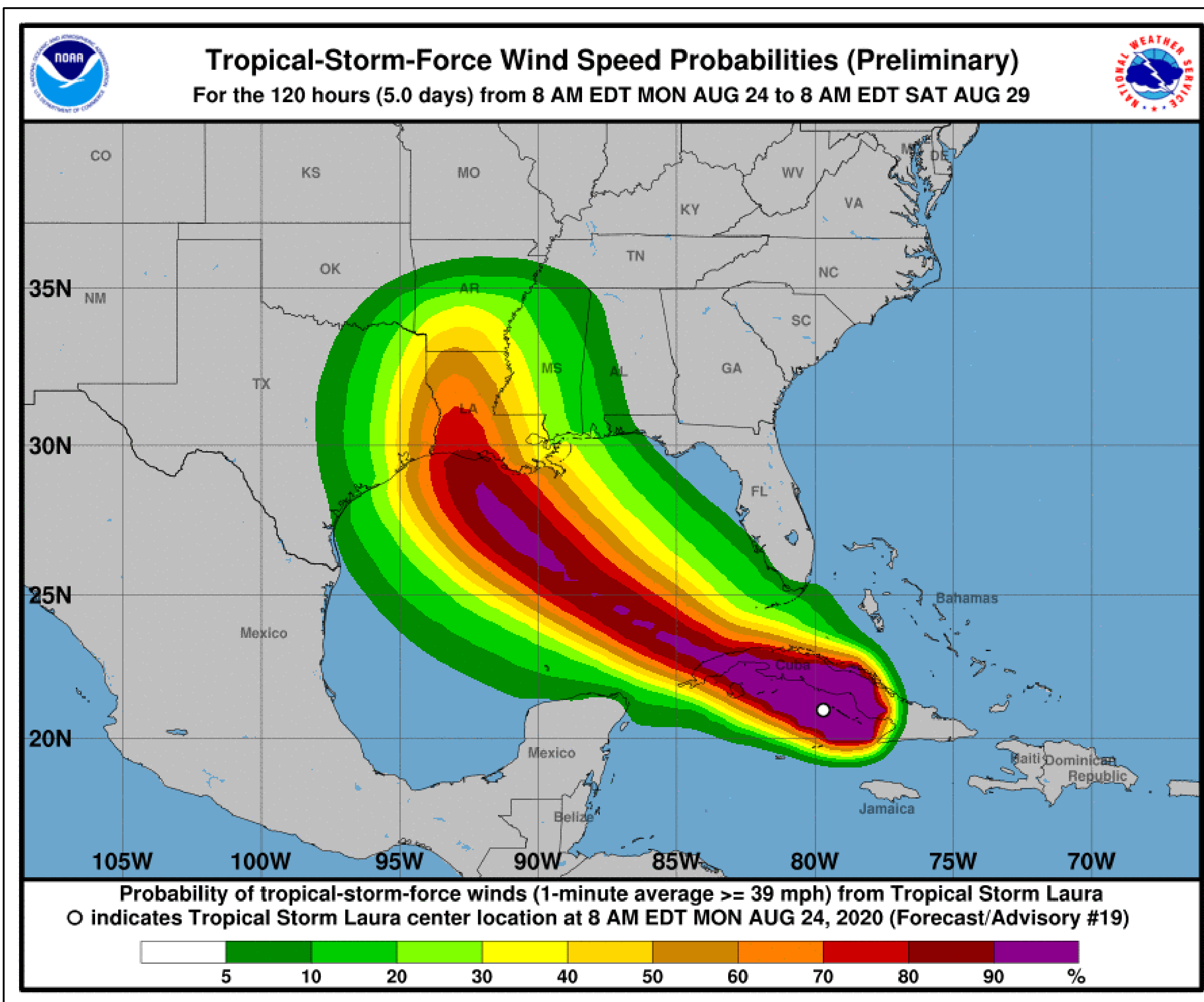
- Morgan City – 10%
- Port Arthur – 15%
- Galveston – 10%
- Probabilities of sustained hurricane force winds (64 kt +) over the next 5 days, based off this cyclone's wind radii and track.
- Clear or dark green are the lowest chances of 0-30%.
- Yellow to orange is 31-70%
- Red through purple are the highest probabilities of 71%-100%
- See the color bar below the image for more details.

# T.S. Wind Speed Probabilities

Tropical Storm Laura



Tropical Analysis and Forecast Branch  
NWS National Hurricane Center



- Mobile – 15%
  - Gulfport – 25%
  - Buras – 30%
  - New Orleans – 40%
  - Morgan City – 55%
  - Port Arthur – 65%
  - Galveston – 50%
  - Freeport – 30%
  - Port O Connor – 20%
- Probabilities of sustained tropical storm force winds (34 kt to 63 kt) over the next 5 days, based off this cyclone's wind radii and track.
  - Clear or dark green are the lowest chances of 0-30%.
  - Yellow to orange is 31-70%
  - Red through purple are the highest probabilities of 71%-100%
  - See the color bar below the image for more details.

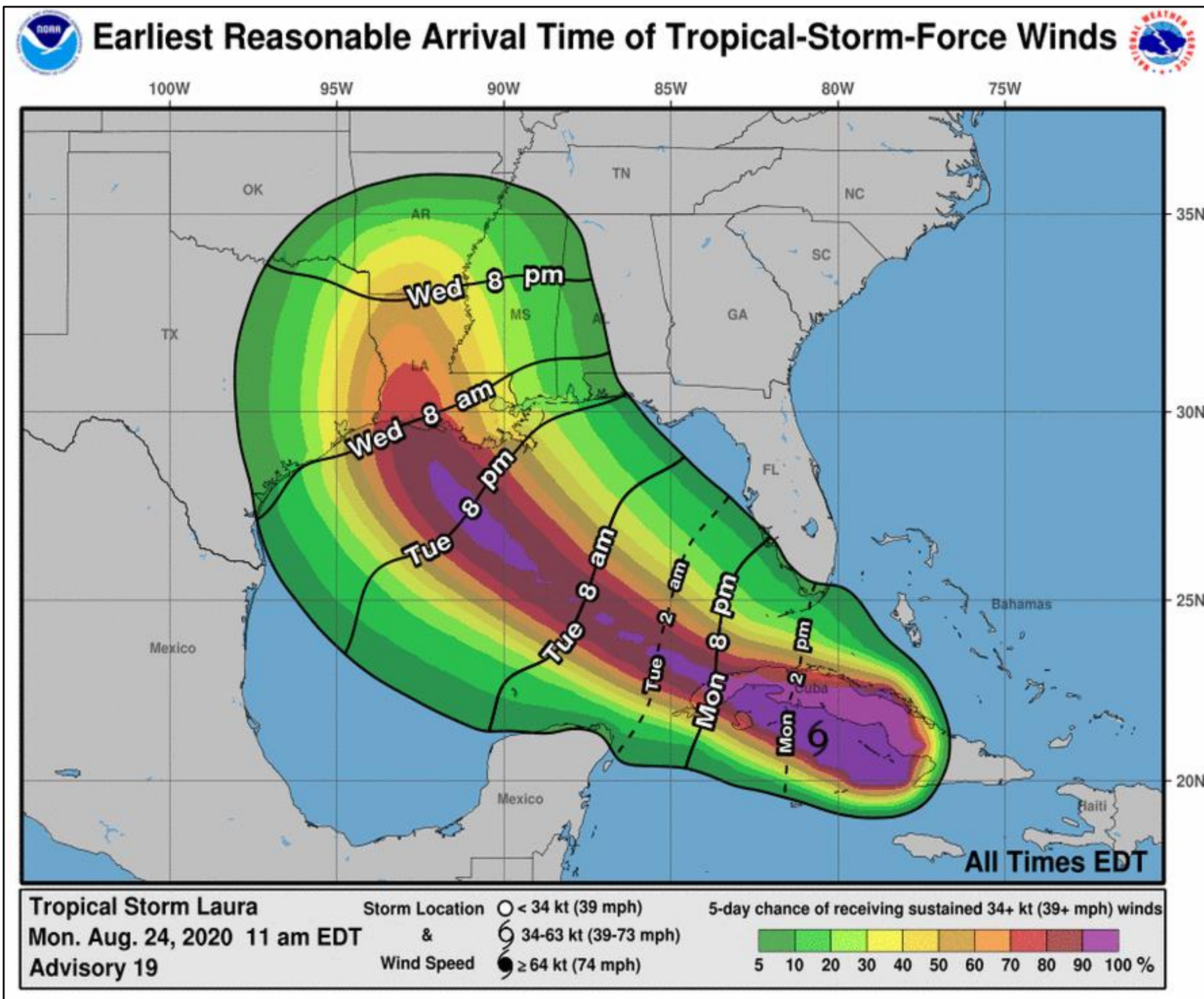


# Earliest Reasonable Time of Arrival

Tropical Storm Marco and Laura



Tropical Analysis and Forecast Branch  
NWS National Hurricane Center



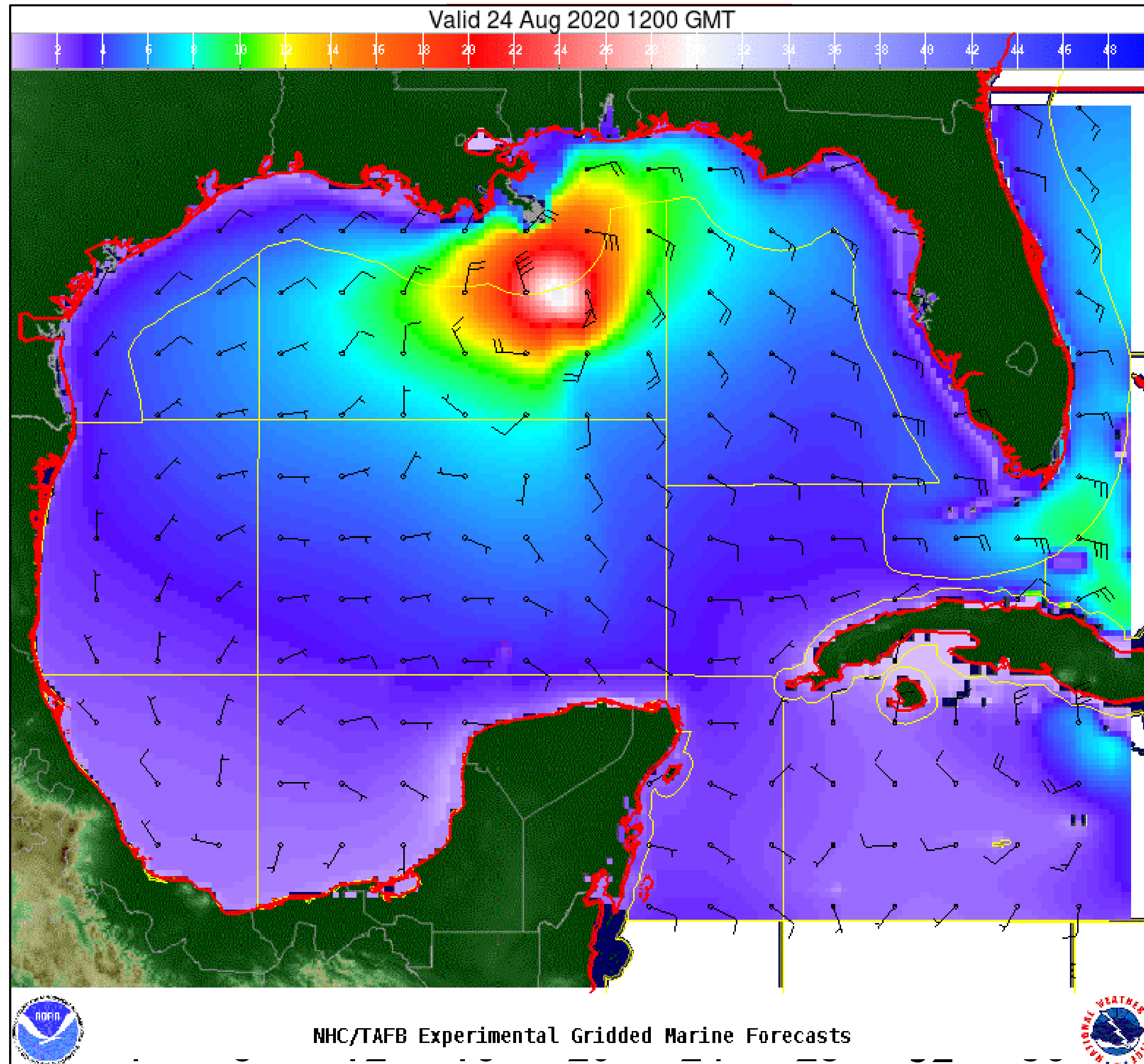
- AL, MS, SE LA – Tuesday night
- W LA, E TX – Wednesday morning
- The earliest reasonable time of arrival of Tropical Storm Force Winds (34kt to 63 kt) for this cyclone based off the current track and wind radii.
- Clear or dark green are the lowest chances of 0-30%.
- Yellow to orange is 31-70%
- Red through purple are the highest probabilities of 71%-100%
- See the color bar below the image for more details.

# Wind And Waves

Tropical Storm Marco and Laura



Tropical Analysis and Forecast Branch  
NWS National Hurricane Center



## Current Conditions

7am CDT, Monday, August 24<sup>th</sup>, 2020

Peak Winds: 45 kt (Marco)

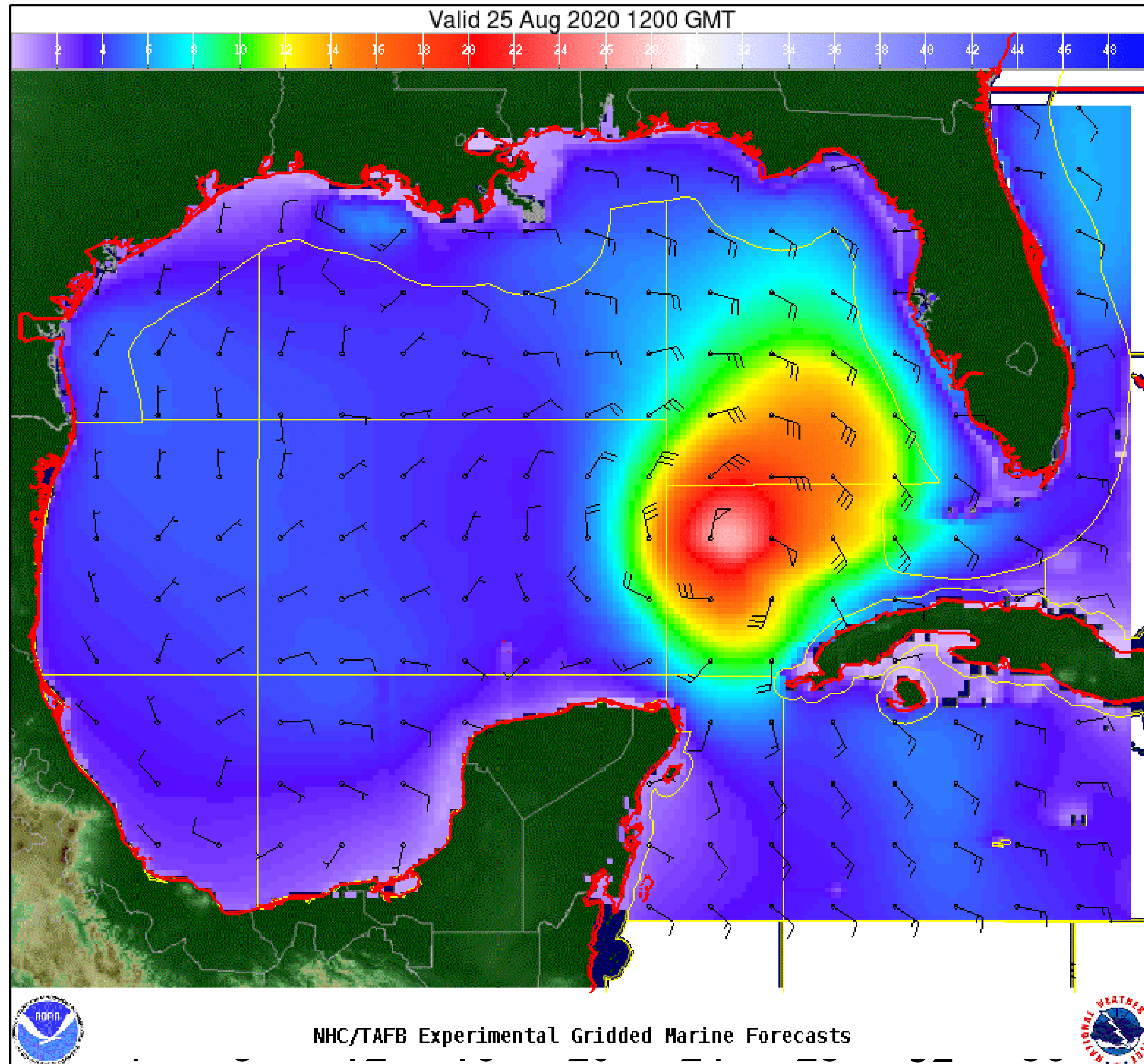
Peak Seas: 18 ft (Marco)

# Wind And Waves

Tropical Storm Marco and Laura



Tropical Analysis and Forecast Branch  
NWS National Hurricane Center



24 Hour Forecast

7am CDT, Tuesday, August 25<sup>th</sup>, 2020

Peak Winds: 60 kt

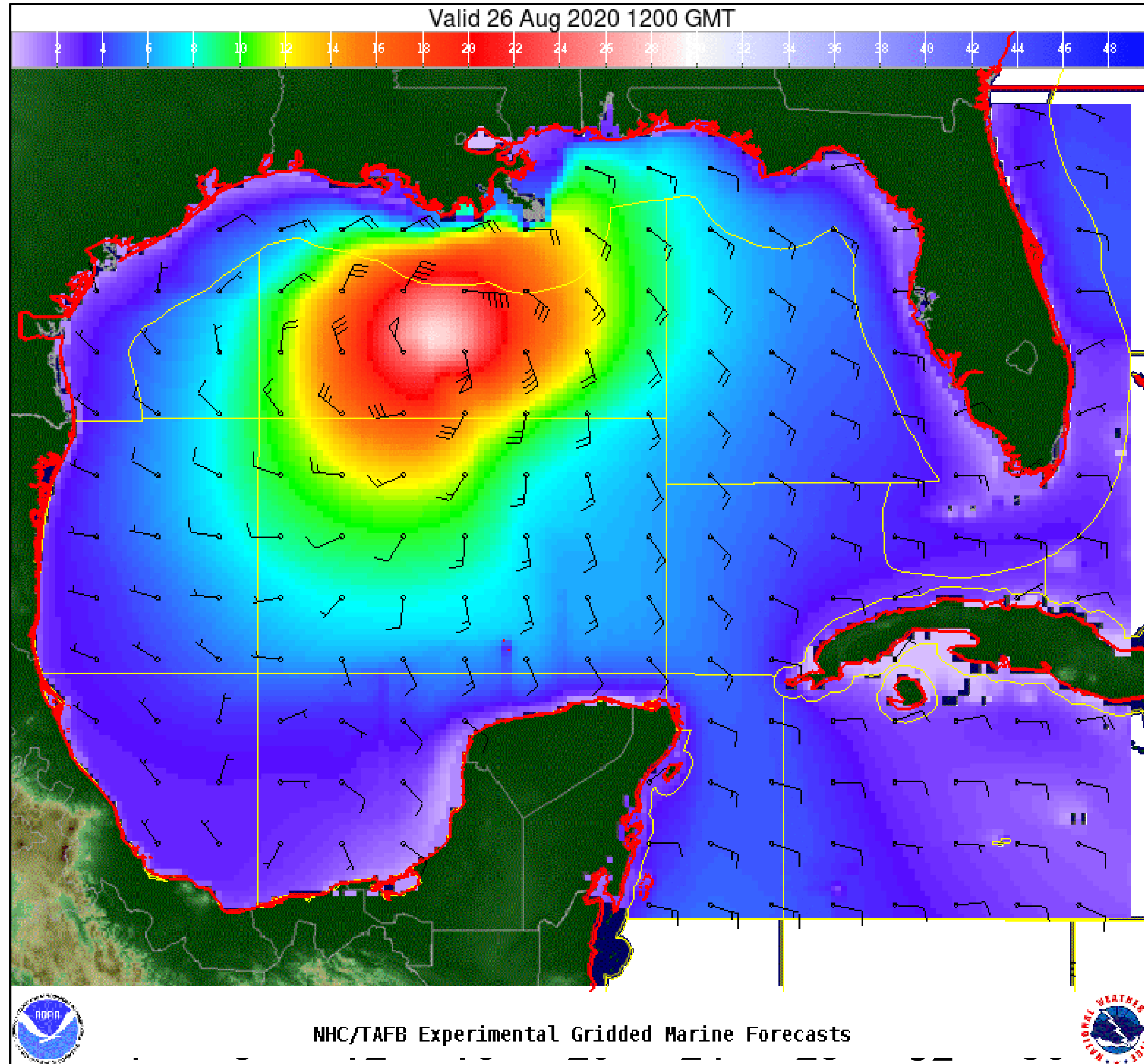
Peak Seas: 25 ft

# Wind And Waves

Tropical Storm Marco and Laura



Tropical Analysis and Forecast Branch  
NWS National Hurricane Center



48 Hour Forecast

7am CDT, Wednesday, August 26<sup>th</sup>, 2020

Peak Winds: 80 kt

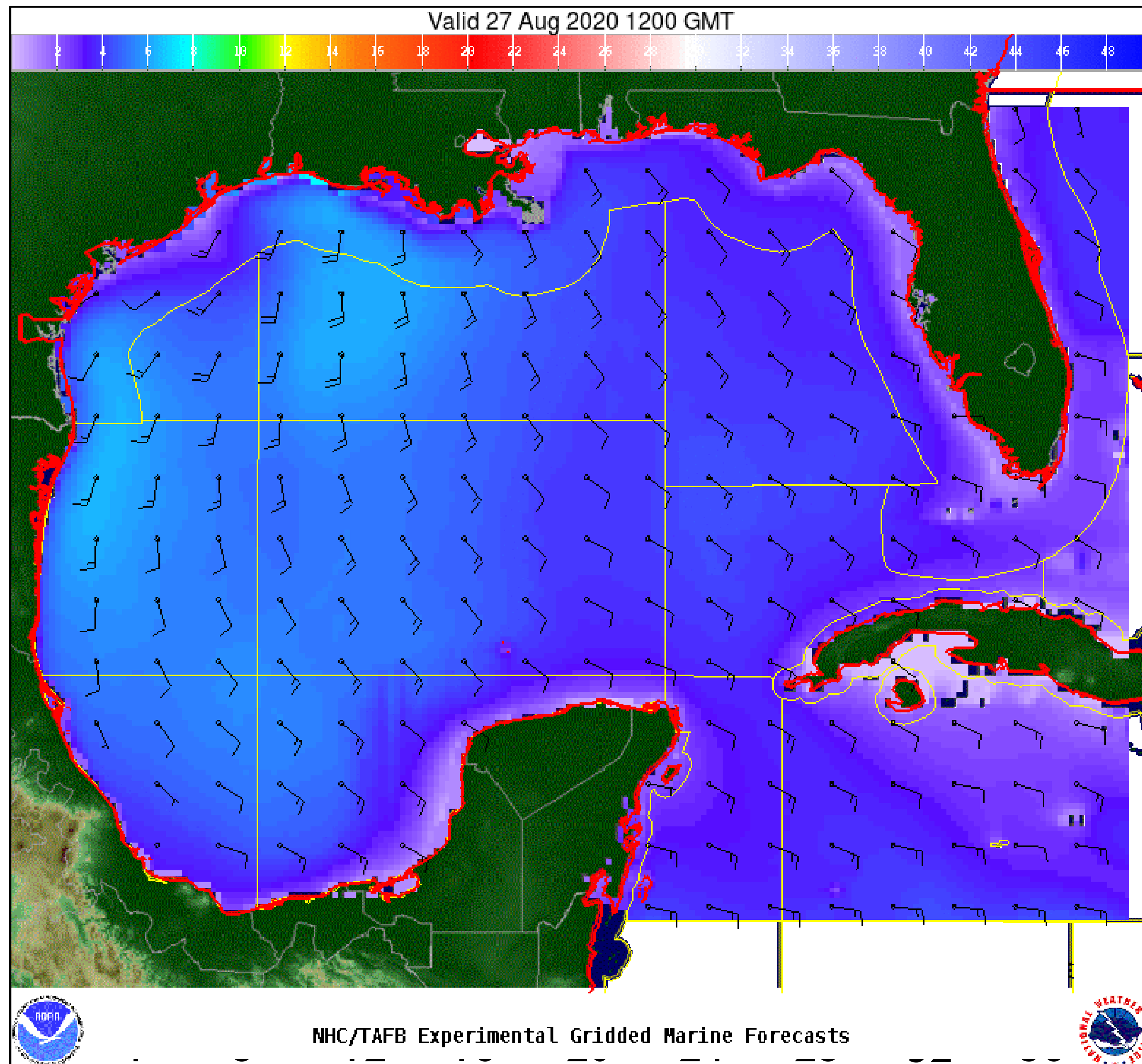
Peak Seas: 30 ft

# Wind And Waves

Tropical Storm Marco and Laura



Tropical Analysis and Forecast Branch  
NWS National Hurricane Center



72 Hour Forecast

7am CDT, Thursday, August 27<sup>th</sup>, 2020

Peak Winds: 20 kt (over water)

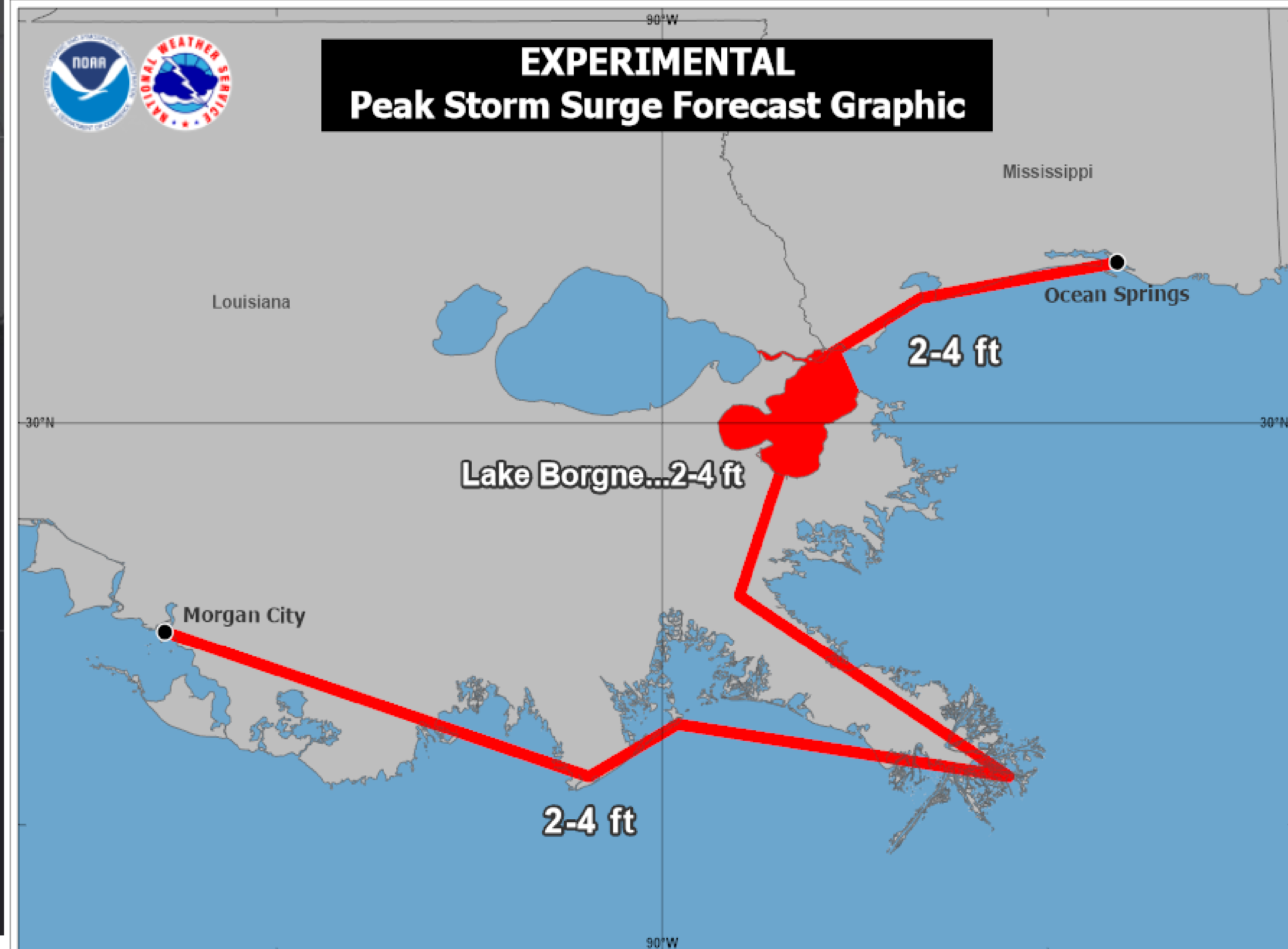
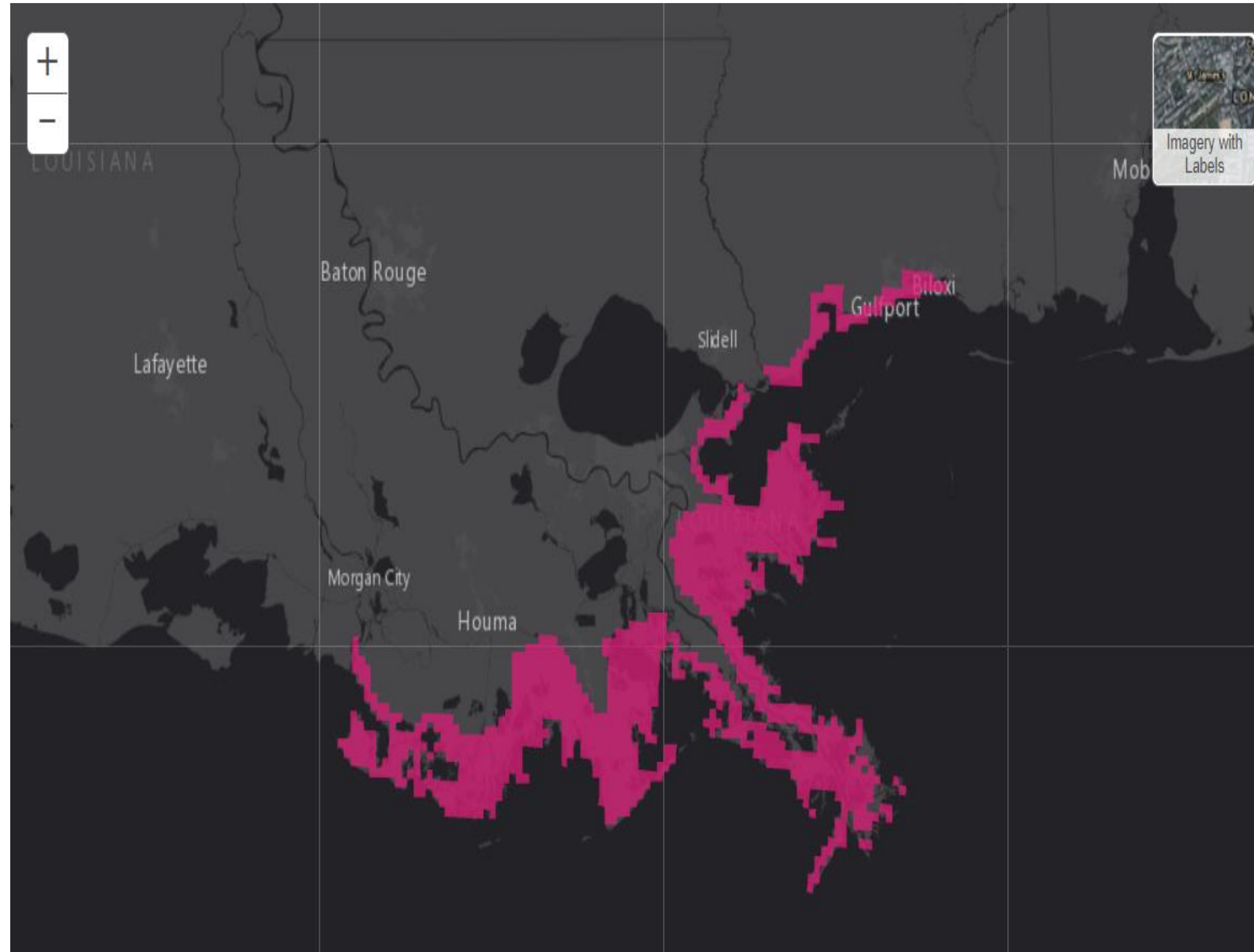
Peak Seas: 10 ft

# Storm Surge Warnings

Tropical Storm Marco



Tropical Analysis and Forecast Branch  
NWS National Hurricane Center



**Tropical Storm Marco**  
**Monday August 24, 2020**  
**10 AM CDT Advisory 17**  
**NWS National Hurricane Center**

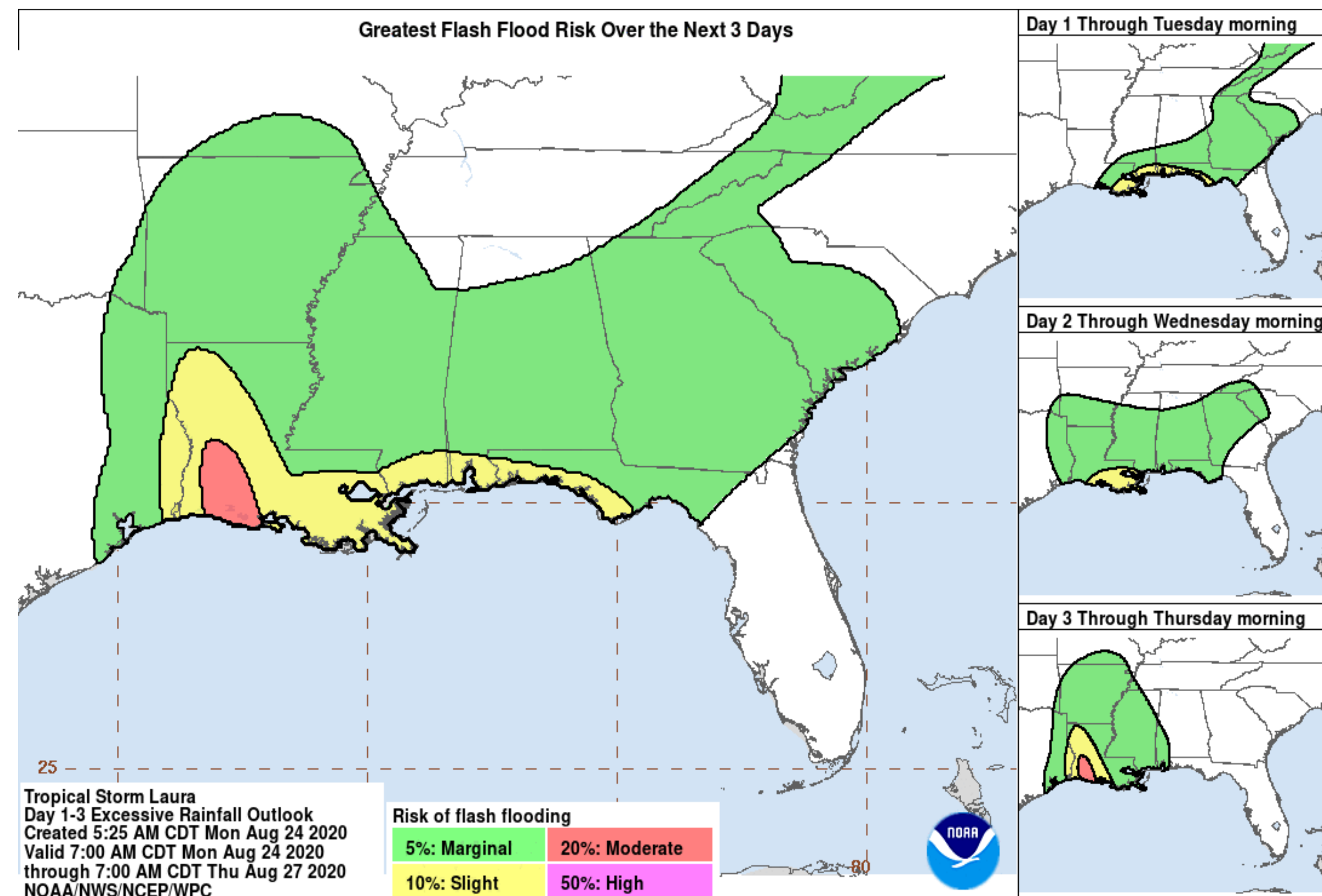
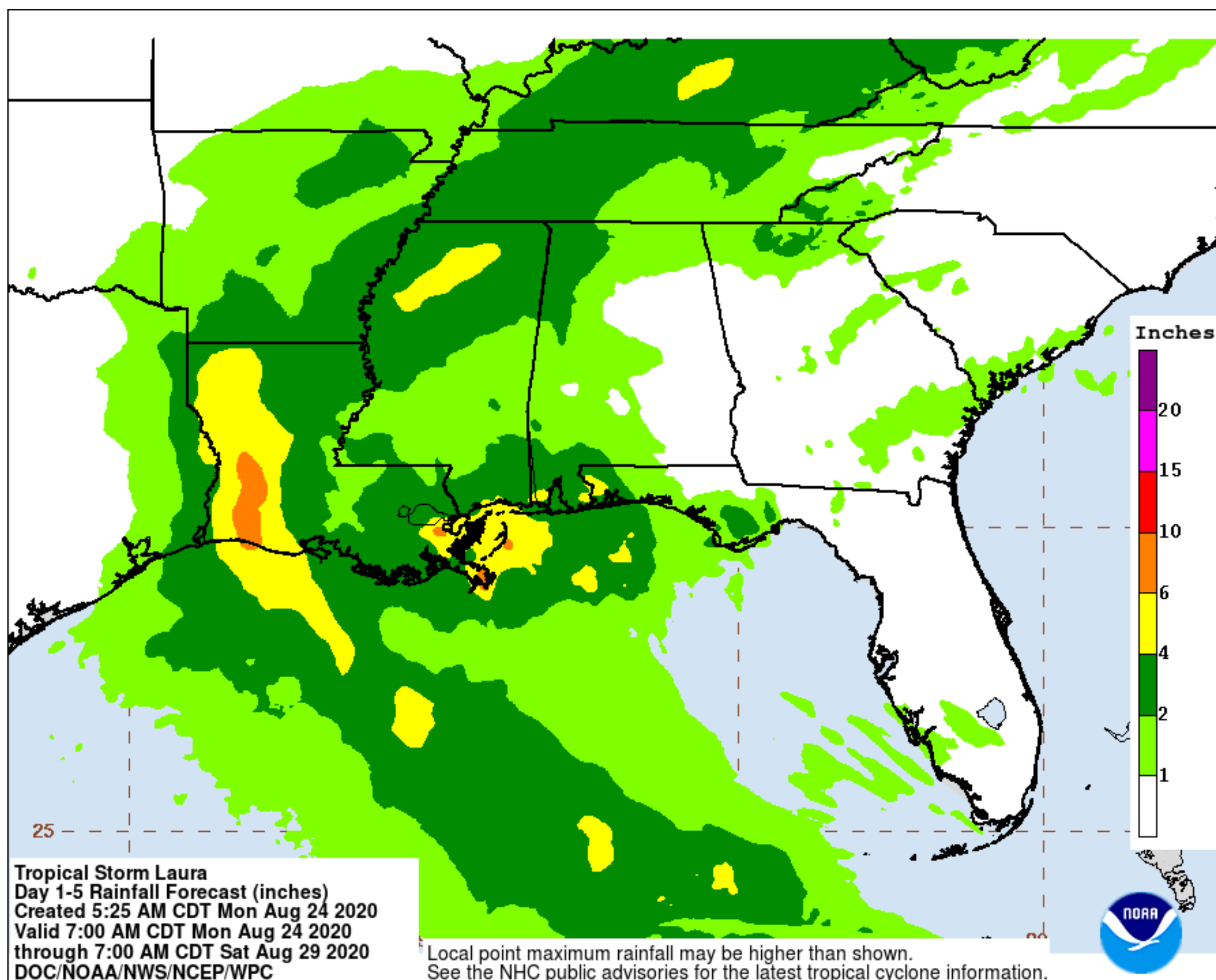
The combination of a dangerous storm surge and the tide will cause normally dry areas near the coast to be flooded by rising waters moving inland from the shoreline. The water could reach the following heights above ground somewhere within the indicated areas if the peak surge occurs at the time of high tide. The deepest water will occur along the immediate coast near the landfall location, where the surge will be accompanied by large and destructive waves. Surge-related flooding depends on the relative timing of the surge and the tidal cycle, and can vary greatly over short distances.

# Expected Storm Total Rainfall and Chance of Flooding Rain



Tropical Analysis and Forecast Branch  
NWS National Hurricane Center

## Tropical Storm Marco and Laura



Risk of rainfall exceeding flash flood guidance within 25 miles of a point

**HIGH: > 50%**      **SLGT: 10%-20%**  
**MDT: 20%-50%**    **MRGL: 5%-10%**

Valid through Thursday morning

- Total rainfall in inches through Saturday morning.

# Tornado Outlook

Tropical Storm Marco and Laura



Tropical Analysis and Forecast Branch  
NWS National Hurricane Center



- Valid through Tuesday morning



- Valid Tuesday morning to Wednesday morning





# Key Messages

## Tropical Storm Marco and Laura



Tropical Analysis and Forecast Branch  
NWS National Hurricane Center



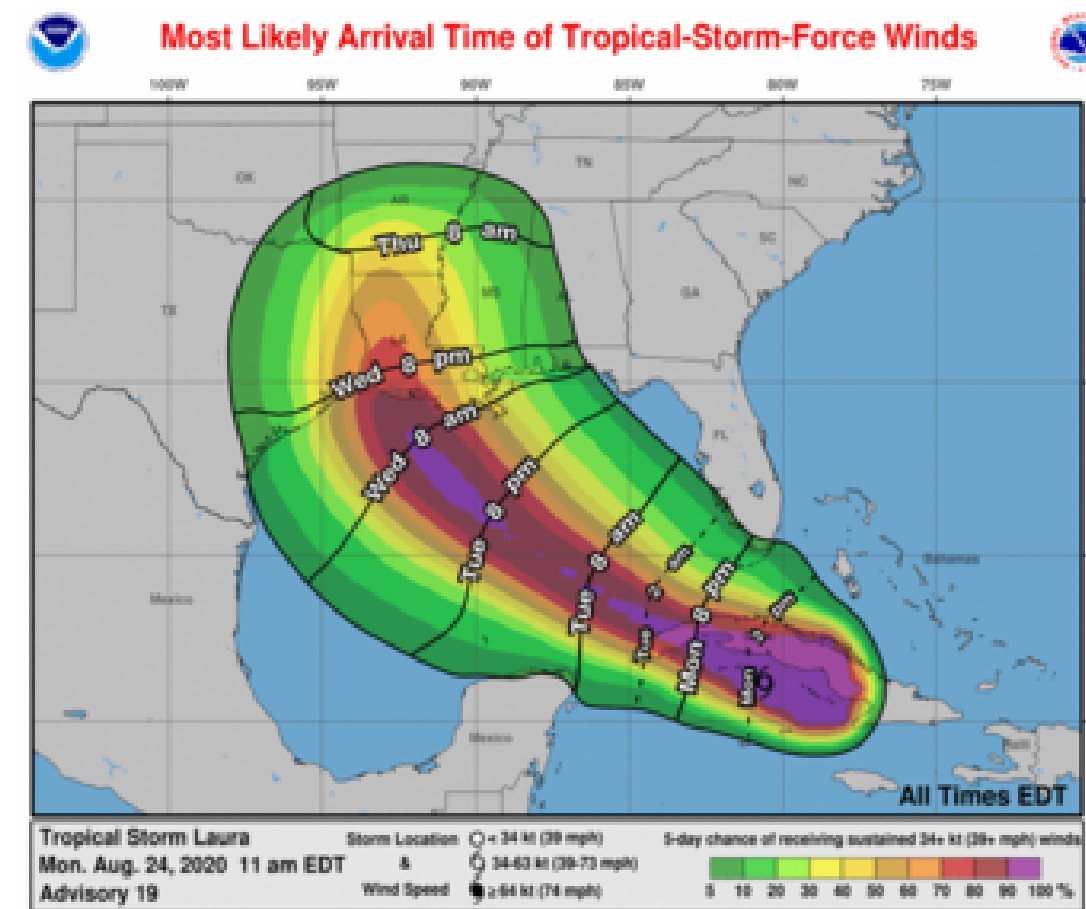
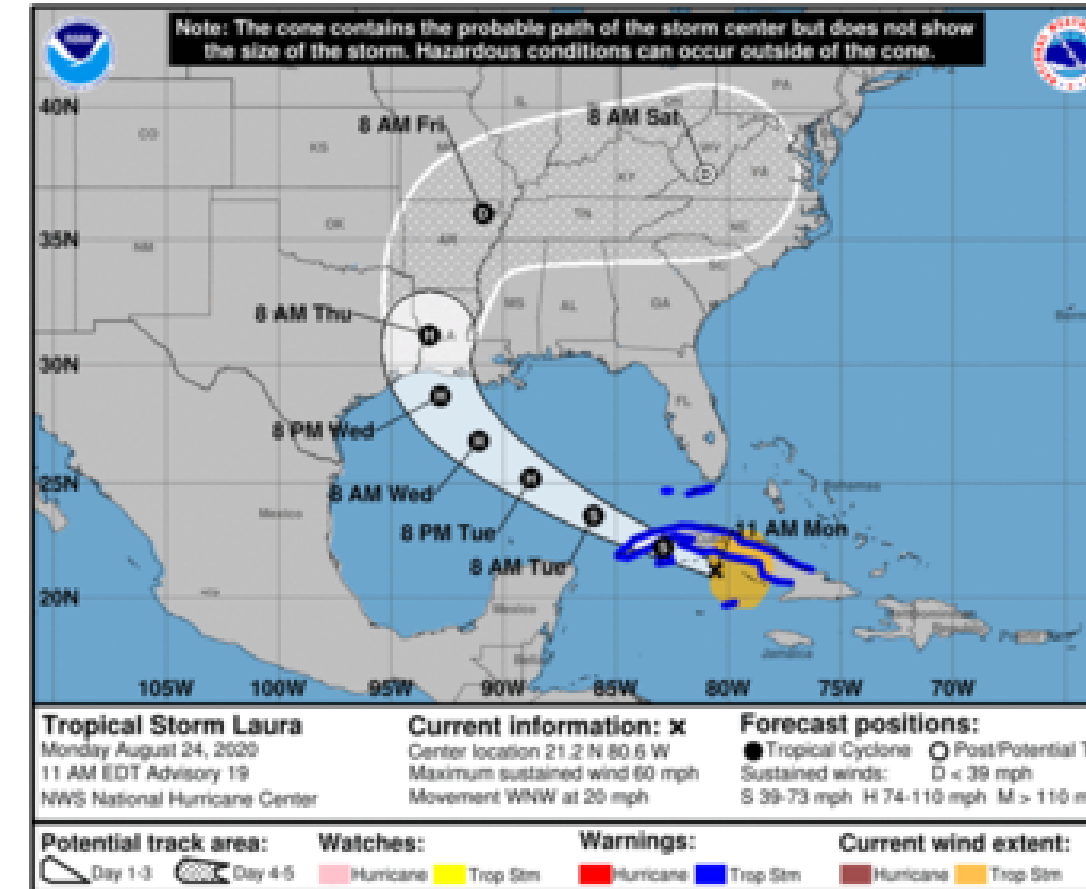
### Key Messages for Tropical Storm Laura

Advisory 19: 11:00 AM EDT Mon Aug 24, 2020



1. Tropical storm conditions are expected across much of Cuba today. Heavy rainfall is likely across Cuba and Jamaica today, and these rains could cause mudslides and life-threatening flash and urban flooding. Tropical storm conditions are expected in the Dry Tortugas, and the Middle and Lower Florida Keys later today.

2. There is an increasing risk of dangerous storm surge, wind, and rainfall impacts from the upper Texas coast through the north-central Gulf Coast beginning on Wednesday. Interests in these areas should monitor the progress of Laura and ensure they have their hurricane plan in place, as storm surge and hurricane watches will likely be issued later today.



For more information go to [hurricanes.gov](https://hurricanes.gov)

- **Marine Key Messages:**
- Currently Marco has a small area of 12ft sea with peak to 18 ft
- Seas will diminish briefly tonight and tomorrow as Marco dissipates
- Laura will then boost seas to 30 ft on Tuesday and Wednesday in eastern and central Gulf
- Conditions return to normal on Thursday



# TROPICAL STORM MARCO AND LAURA BRIEFING

You can contact the Tropical Analysis and Forecast Branch at  
305-229-4424

*The Next Briefing Will Be:  
Tuesday | 1:00 AM CDT*

*You can always find get the latest graphics and information for this storm at [www.hurricanes.gov](http://www.hurricanes.gov)*

