

IMPACTS FOR **D8**

Winds – **High**

Storm Surge – **Extreme**

Rainfall/Flash Flooding – **High**

Tornadoes – **Low**

Waves - **High**

TROPICAL STORM SALLY BRIEFING



11:00 AM CDT
Sunday, September 13, 2020

Prepared by:
Chris Landsea

*Tropical Analysis and Forecast Branch
NWS National Hurricane Center*

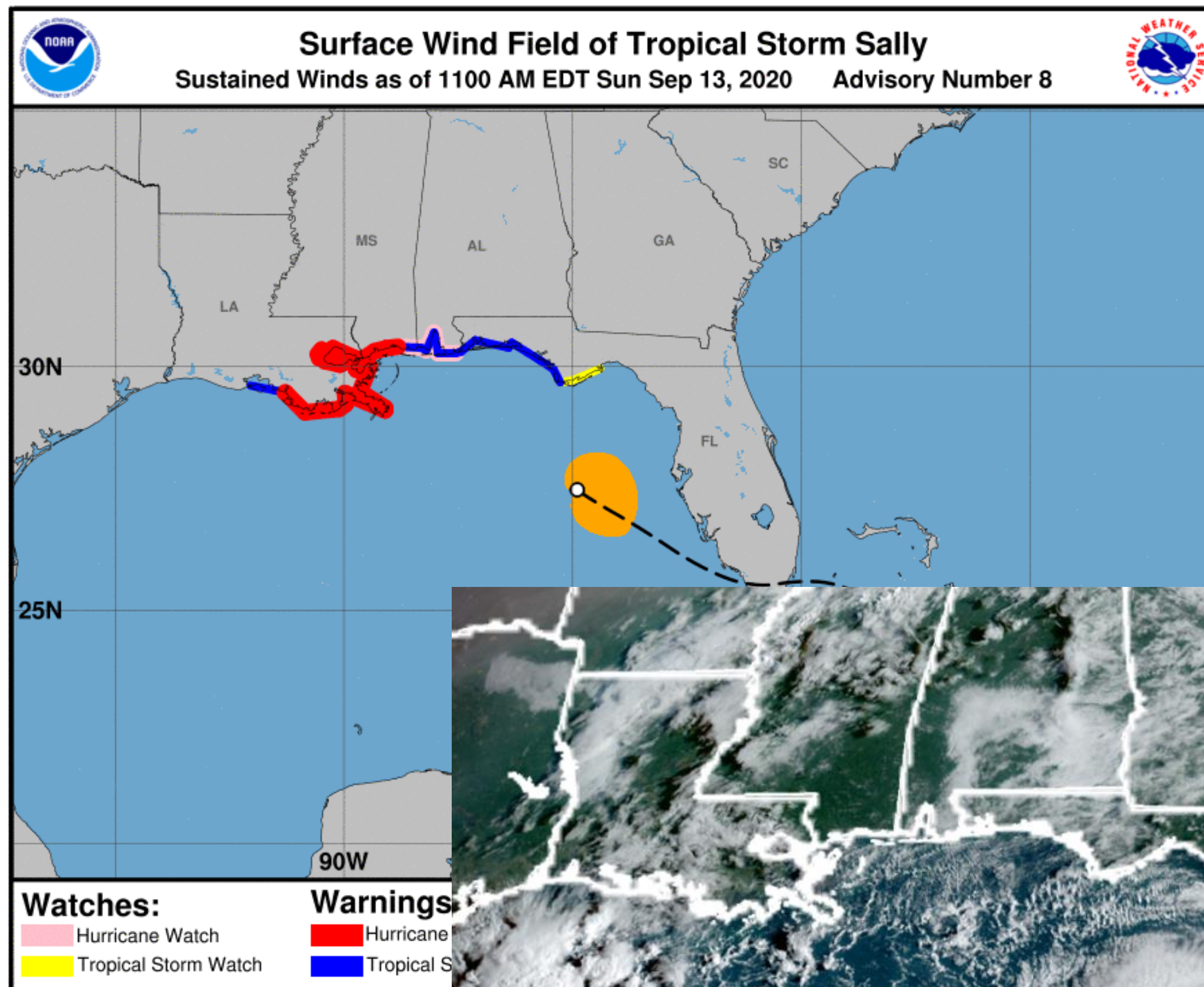


Situation Overview



Tropical Analysis and Forecast Branch
NWS National Hurricane Center

Tropical Storm Sally



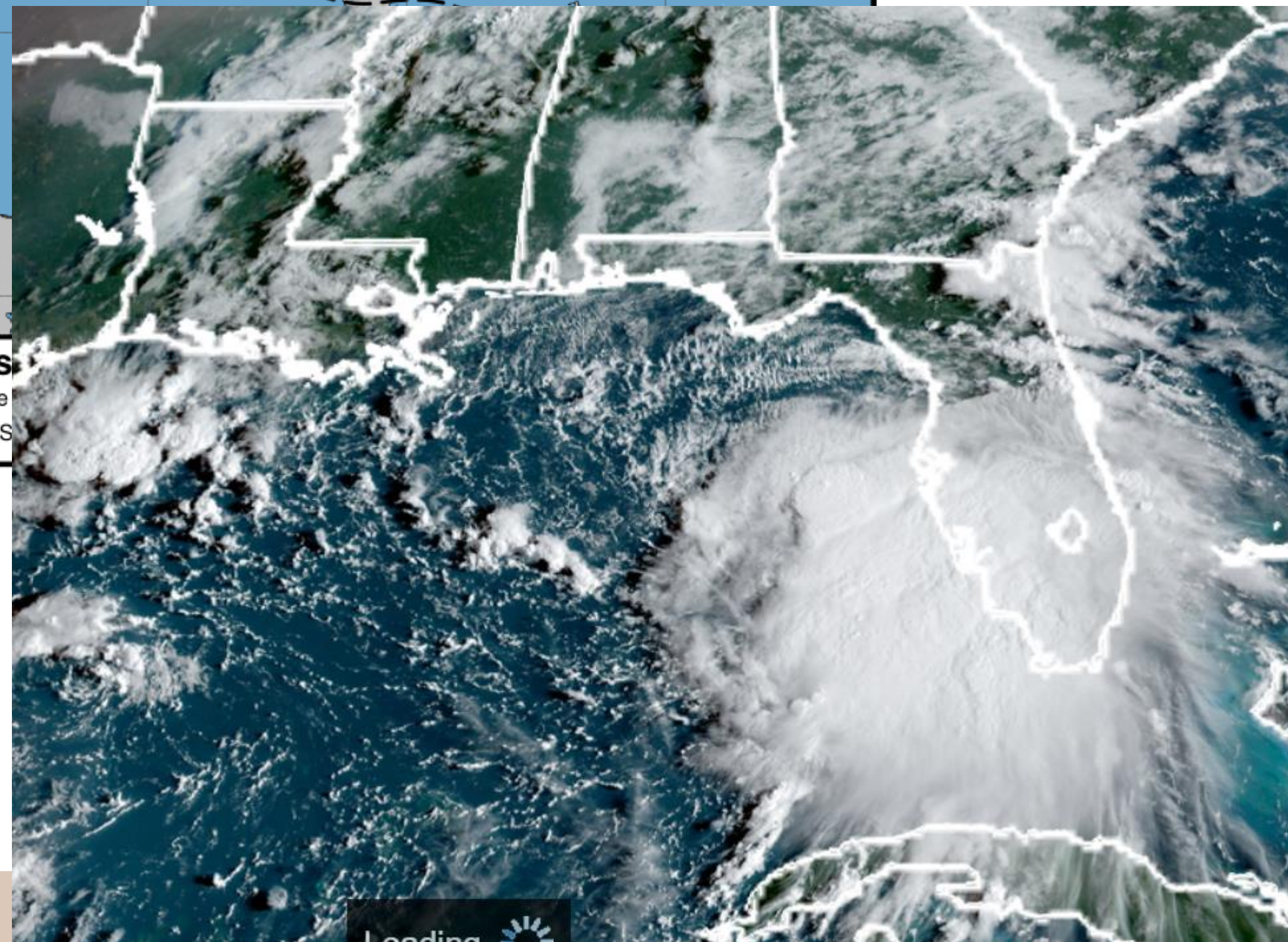
**...SALLY EXPECTED TO STRENGTHEN TONIGHT AND MONDAY...
...LIFE-THREATENING STORM SURGE, HURRICANE-FORCE WINDS AND HEAVY RAINFALL EXPECTED ALONG PORTIONS OF THE NORTHERN GULF COAST STARTING ON MONDAY...**

SUMMARY OF 1000 AM CDT INFORMATION

LOCATION...27.5N 84.9W
ABOUT 115 NM W OF ST. PETERSBURG FL
ABOUT 245 NM KM ESE OF MOUTH OF MISSISSIPPI RIVER
MAXIMUM SUSTAINED WINDS 50 KT
PRESENT MOVEMENT...WNW AT 11 KT

SIZE (IN NM)

50 KT..... 30NE 30SE 0SW 0NW.
34 KT..... 60NE 80SE 0SW 20NW.
12 FT SEAS.. 30NE 30SE 0SW 30NW.
PEAK SEAS 15 FT

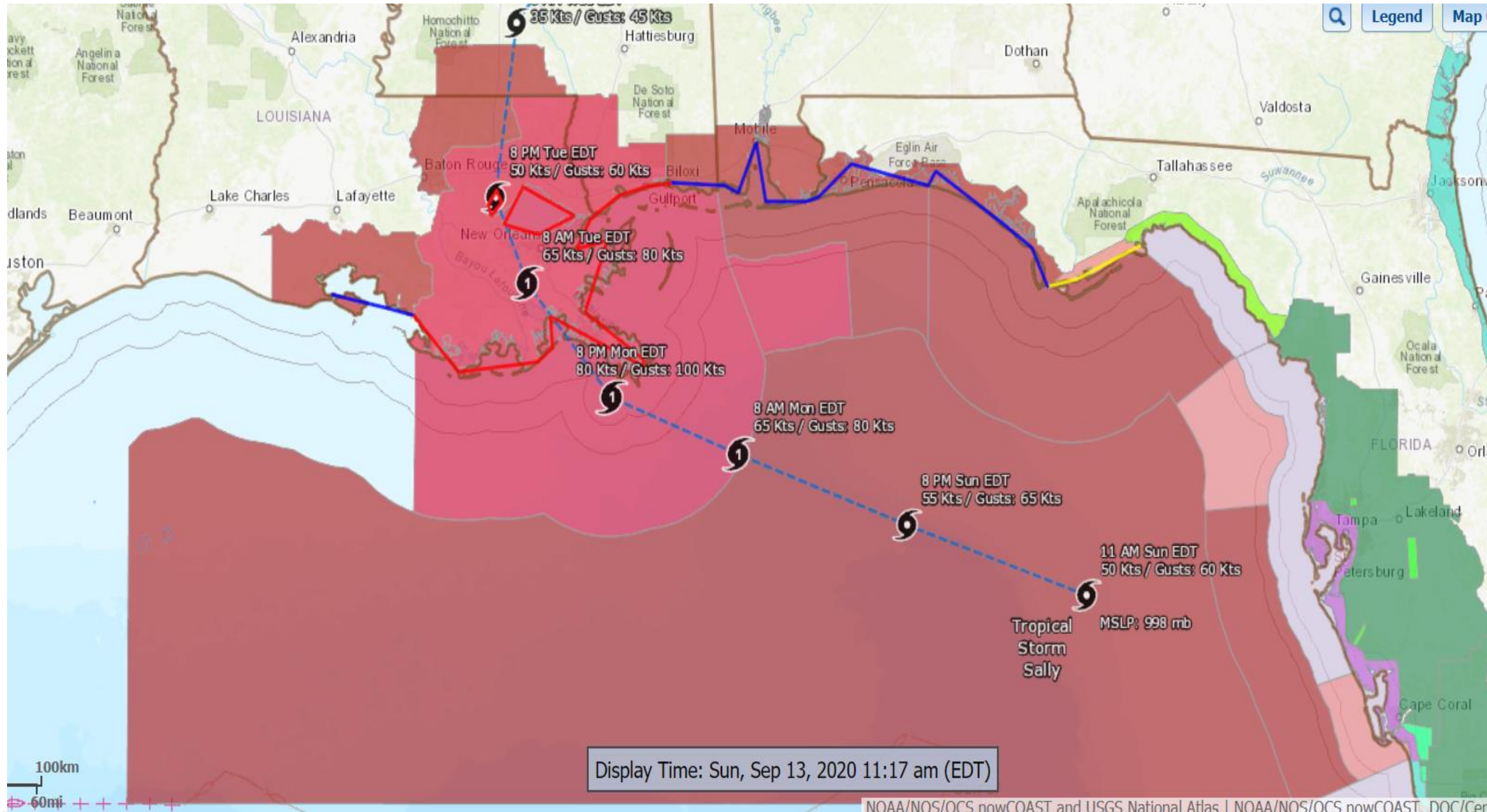


Hazards Map

Tropical Storm Sally



Tropical Analysis and Forecast Branch
NWS National Hurricane Center



Legend

- Hurricane Warning
- Tropical Storm Warning
- Hurricane Watch
- Tropical Storm Watch

Display Time: Sun, Sep 13, 2020 11:17 am (EDT)

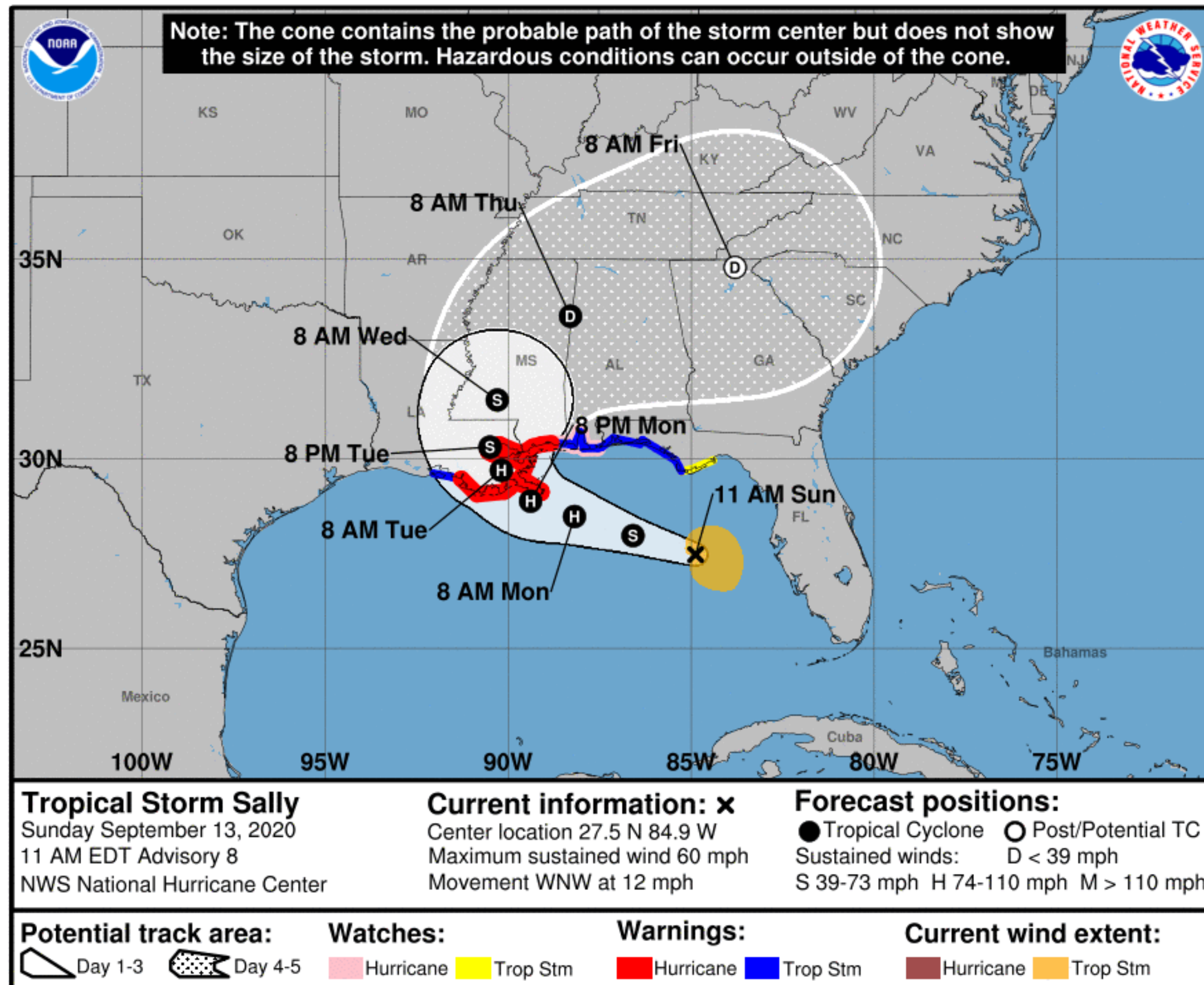
NOAA/NOS/OCS nowCOAST and USGS National Atlas | NOAA/NOS/OCS nowCOAST, DOC/Cens

Forecast Information

Tropical Storm Sally



Tropical Analysis and Forecast Branch
NWS National Hurricane Center



- Sally will turn gradually toward the NW and slow down during the next three days
- Steady strengthening is expected until landfall
- Landfall timing is uncertain due to the anticipated slow speed: Anytime between Monday noon and Tuesday morning
- Hurricane Category 1 forecast, but could attain Category 2 by landfall
- Current center forecast positions through the next 5 days illustrated by dots
- White swath of potential track is average track error added to each side of the forecast track through day 3
- Hatched swath of potential track is average track error added to each side of the forecast track days 4-5

** Swaths are calculated using average track errors and actual track may be well inside, or possibly outside the potential track areas indicated.

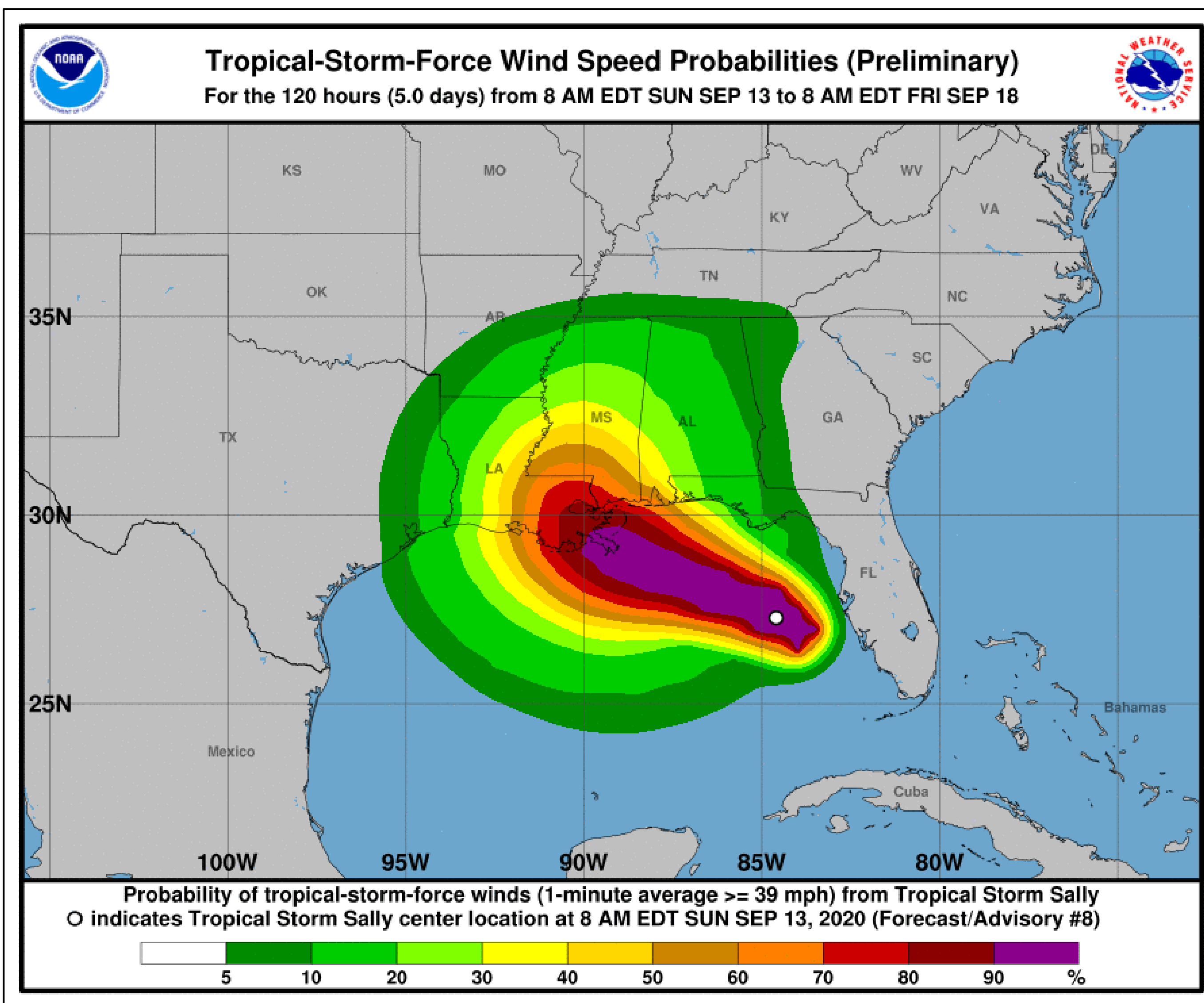
NOTE: Do not focus on the exact track. Impacts can occur well outside the area enclosed by the cone.

T.S. Wind Speed Probabilities

Tropical Storm Sally



Tropical Analysis and Forecast Branch
NWS National Hurricane Center



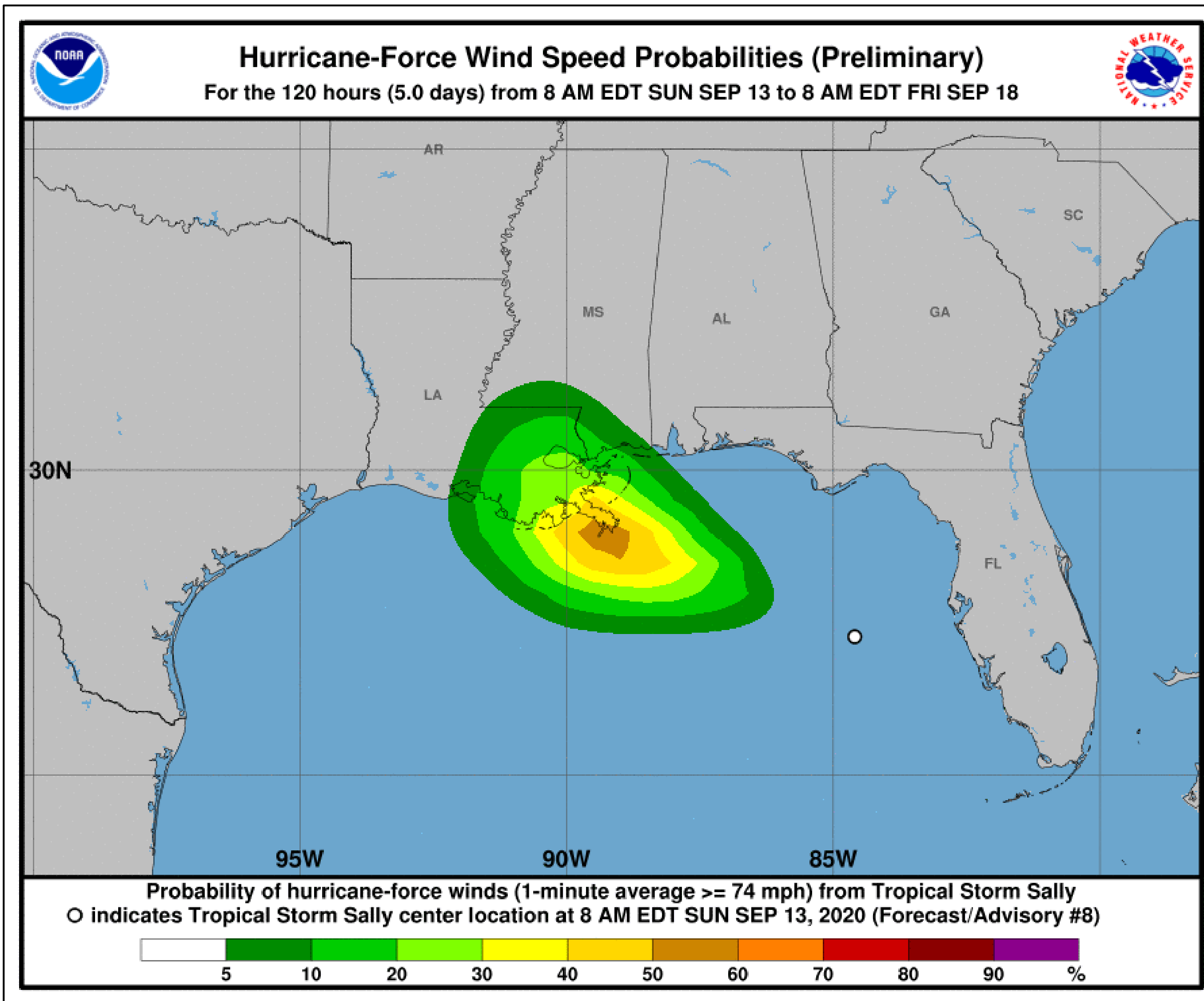
- **Apalachicola, FL – 20%**
- **Panama City and Destin, FL – 20%**
- **Pensacola, FL – 30%**
- **Mobile and Dauphin Island, AL – 50%**
- **Pascagoula and Gulfport, MS – 65%**
- **New Orleans, LA – 75%**
- **Venice and Grand Isle, LA – 85%**
- **Morgan City and Vermillion Bay, LA – 65%**
- **Cameron and Lake Charles, LA – 30%**
- **Port Arthur, LA (Sabine Pass) – 15%**
- Probabilities of sustained tropical storm force winds (34 kt to 63 kt) over the next 5 days, based off this cyclone's wind radii and track.
- Clear or dark green are the lowest chances of 0-30%.
- Yellow to orange is 31-70%
- Red through purple are the highest probabilities of 71%-100%
- See the color bar below the image for more details.

Hurricane Wind Speed Probabilities



Tropical Analysis and Forecast Branch
NWS National Hurricane Center

Tropical Storm Sally



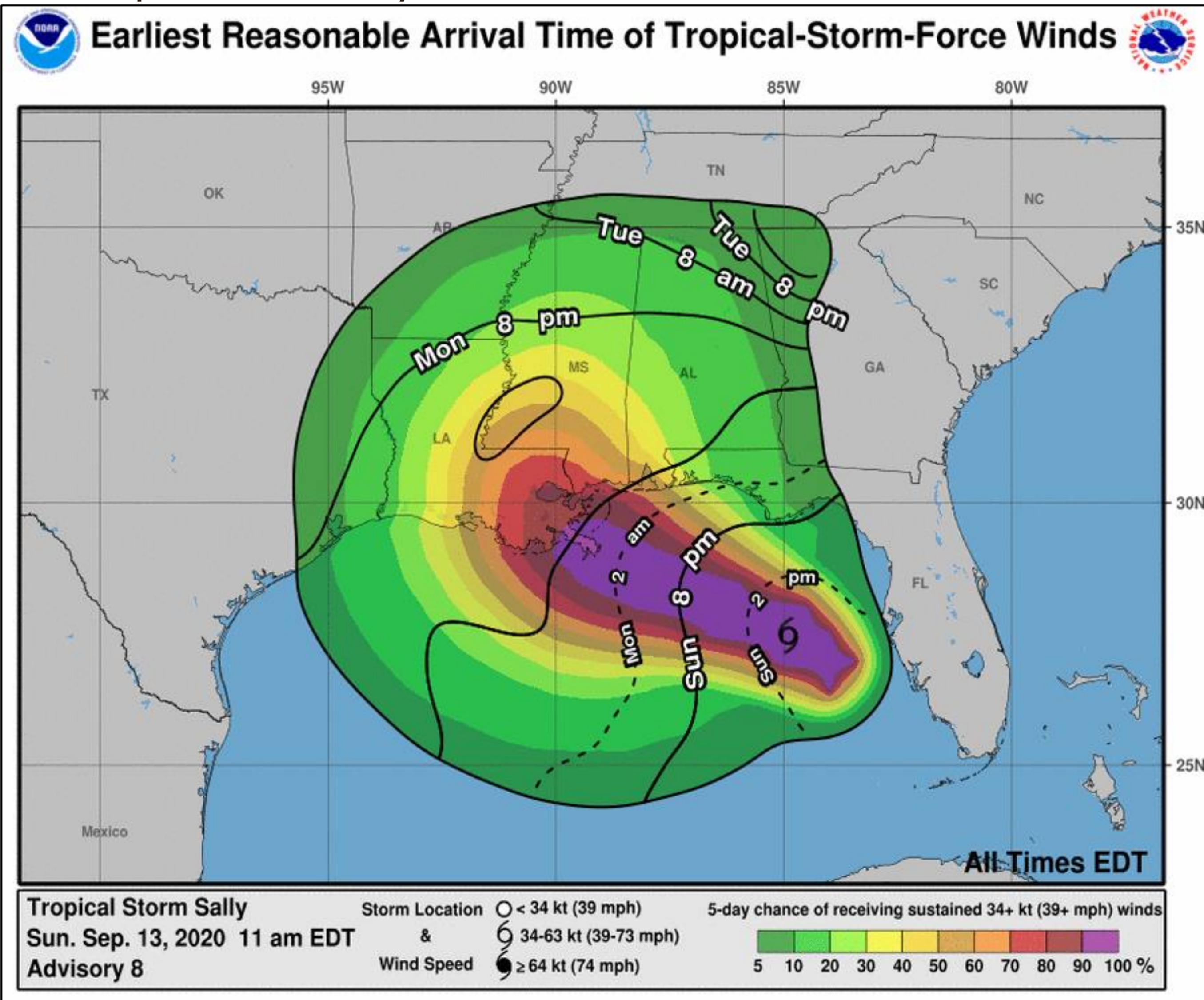
- **Pascagoula and Gulfport, MS – 10%**
- **New Orleans, LA – 20%**
- **Venice and Grand Isle, LA – 20%**
- **Morgan City and Vermillion Bay, LA – 10%**
- Probabilities of sustained hurricane force winds (64 kt +) over the next 5 days, based off this cyclone's wind radii and track.
- Clear or dark green are the lowest chances of 0-30%.
- Yellow to orange is 31-70%
- See the color bar below the image for more details.

Earliest Reasonable Time of Arrival and Tropical Storm Windspeed Probabilities

Tropical Storm Sally



Tropical Analysis and Forecast Branch
NWS National Hurricane Center



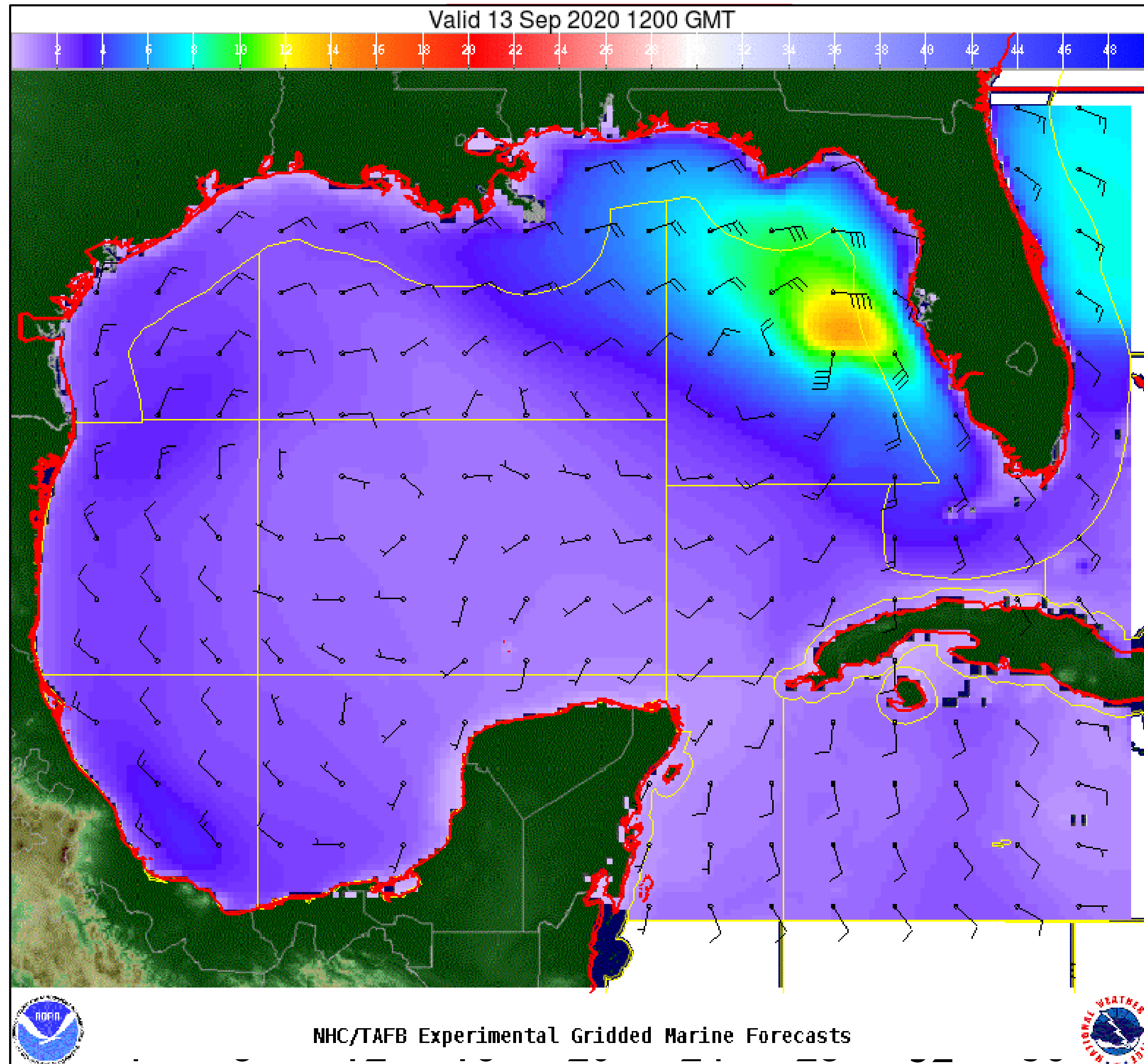
- **Apalachicola, FL – this evening**
- **Panama City and Destin, FL – late tonight**
- **Pensacola, FL – late tonight**
- **Mobile and Dauphin Island, AL – Monday morning**
- **Pascagoula and Gulfport, MS – Monday morning**
- **New Orleans, LA – Monday morning**
- **Venice and Grand Isle, LA – Monday morning**
- **Morgan City and Vermillion Bay, LA – Monday noon**
- **Cameron and Lake Charles, LA – Monday noon**
- **Port Arthur, LA (Sabine Pass) – Monday afternoon**
- The earliest reasonable time of arrival of Tropical Storm Force Winds (34kt to 63 kt) for this cyclone based off the current track and wind radii.
- Clear or dark green are the lowest chances of 0-30%.
- Yellow to orange is 31-70%
- Red through purple are the highest probabilities of 71%-100%
- See the color bar below the image for more details.

Wind And Waves

Tropical Storm Sally



Tropical Analysis and Forecast Branch
NWS National Hurricane Center



Current Conditions

7am CDT, Sunday, September 13th, 2020

Peak Winds: 20 kt (in D8 SRR)

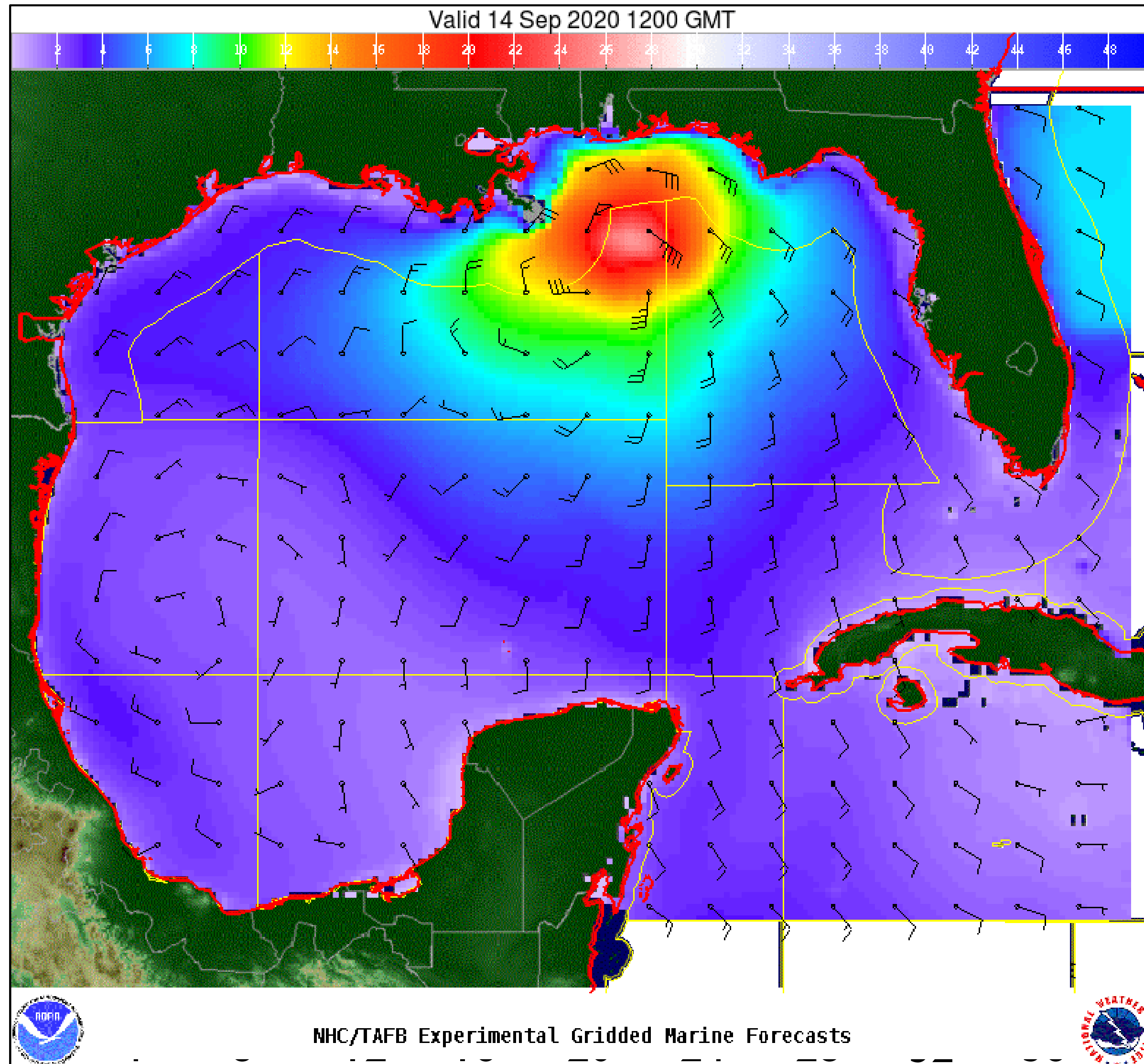
Peak Seas: 8 ft (in D8 SRR)

Wind And Waves

Tropical Storm Sally



Tropical Analysis and Forecast Branch
NWS National Hurricane Center



24 Hour Forecast

7am CDT, Monday, September 14th, 2020

Peak Winds: 65 kt

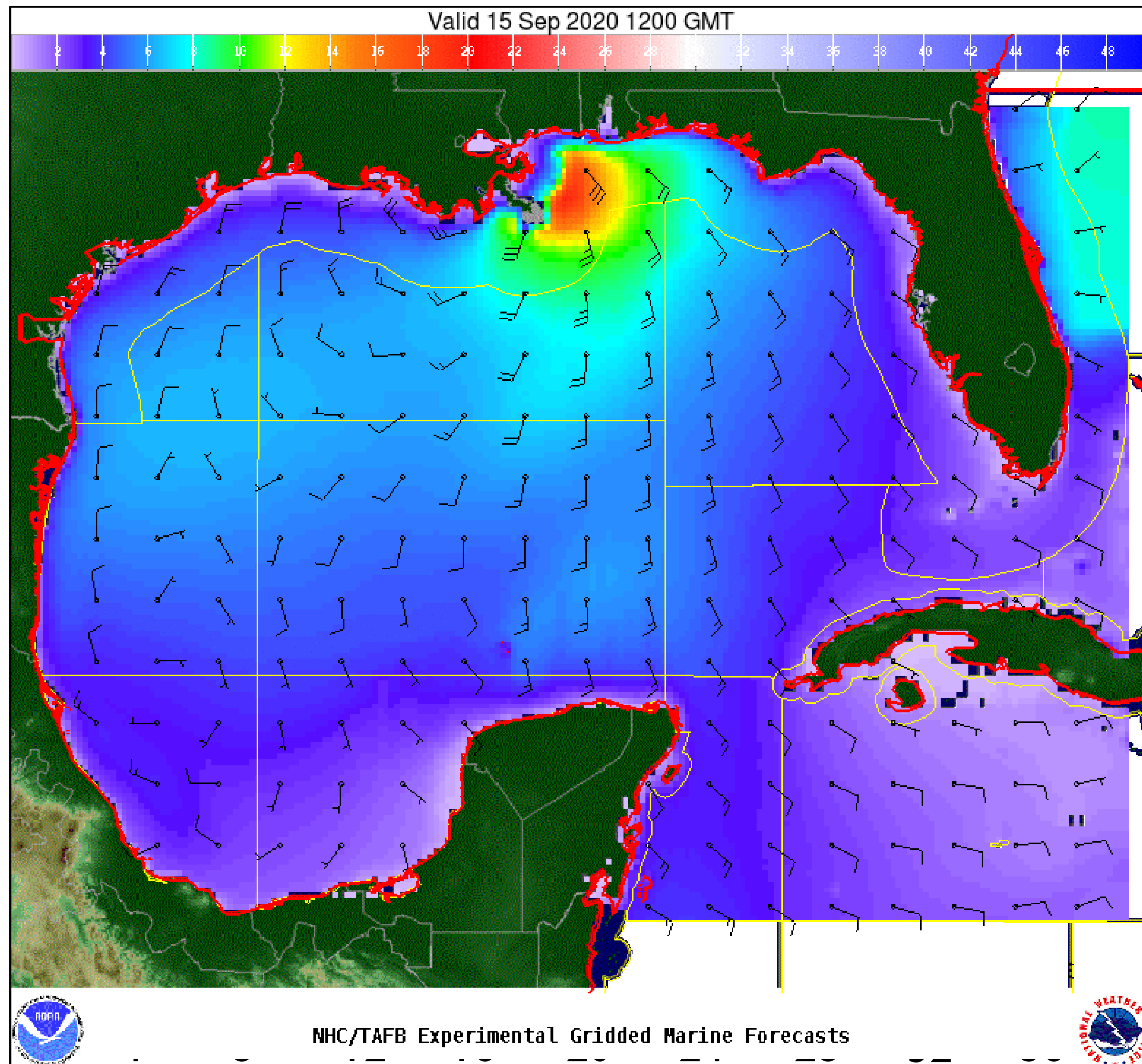
Peak Seas: 25 ft

Wind And Waves

Tropical Storm Sally



Tropical Analysis and Forecast Branch
NWS National Hurricane Center



48 Hour Forecast

7am CDT, Tuesday, September 15th, 2020

Peak Winds: 65 kt

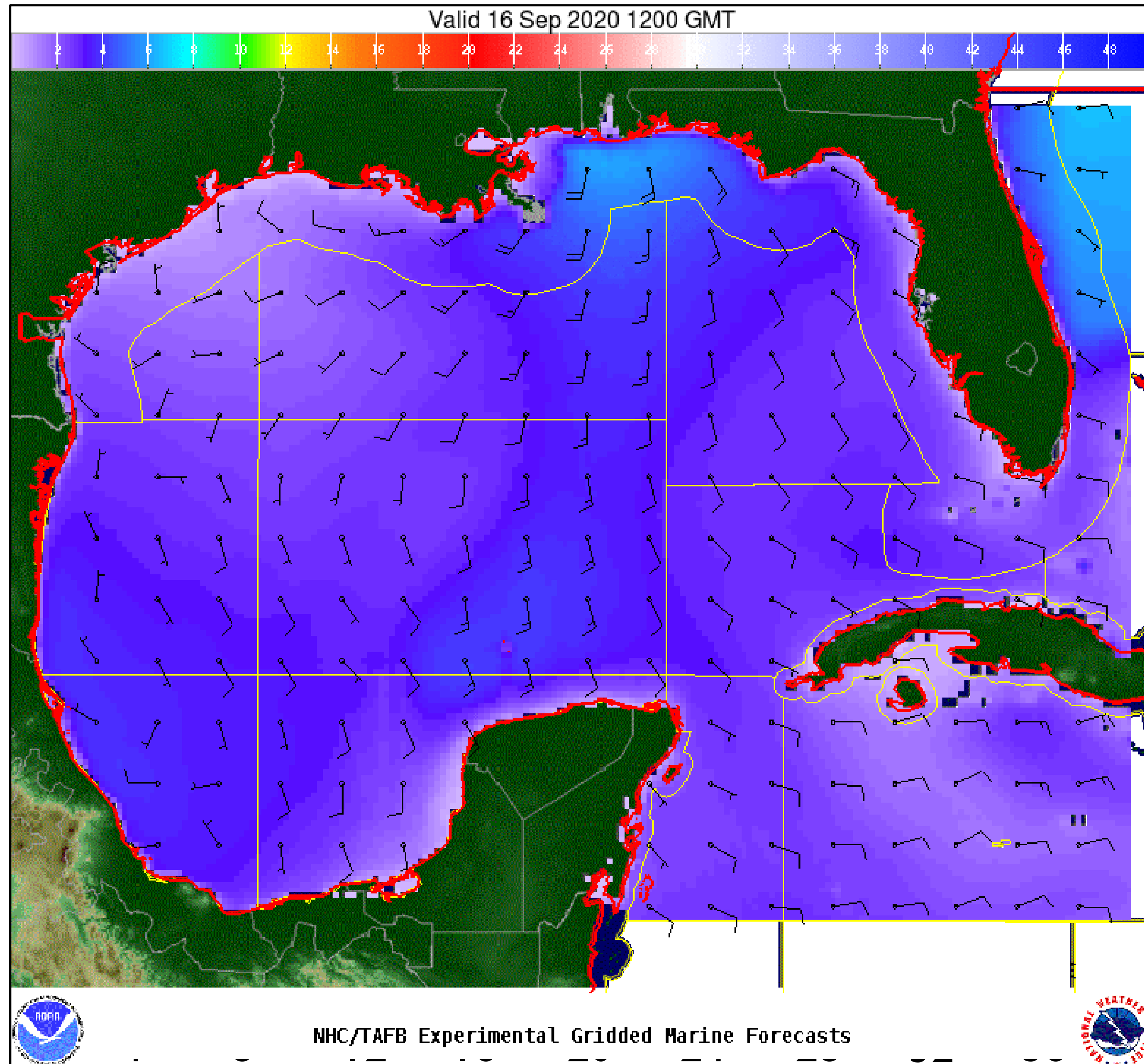
Peak Seas: 20 ft

Wind And Waves

Tropical Storm Sally



Tropical Analysis and Forecast Branch
NWS National Hurricane Center



72 Hour Forecast

7am CDT, Wednesday, September 16th, 2020

Peak Winds: 20 kt (over water)

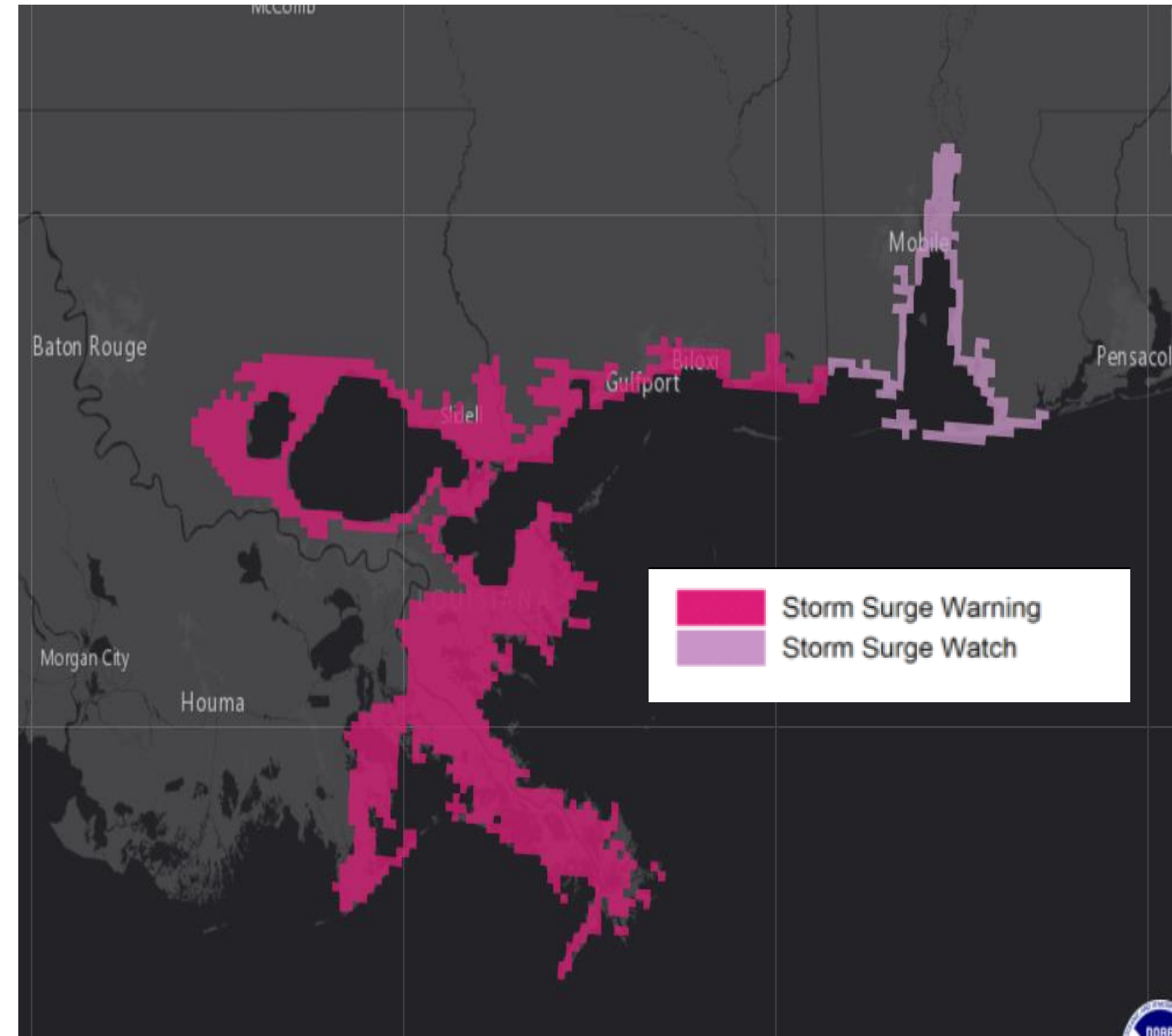
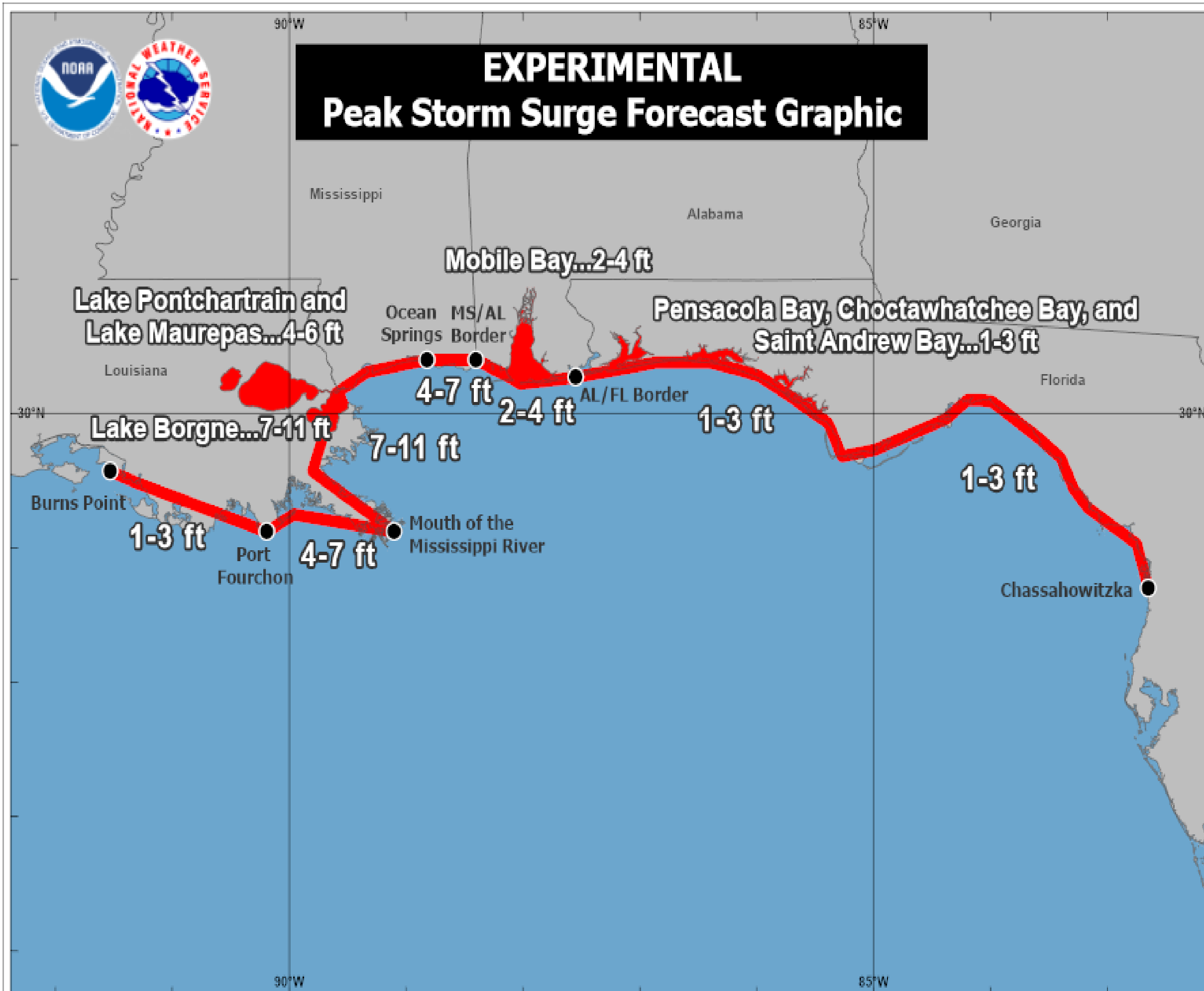
Peak Seas: 8 ft

Potential Peak Storm Surge and Storm Surge Warning



Tropical Analysis and Forecast Branch
NWS National Hurricane Center

Tropical Storm Sally



Tropical Storm Sally
Sunday September 13, 2020
11 AM EDT Advisory 8
NWS National Hurricane Center

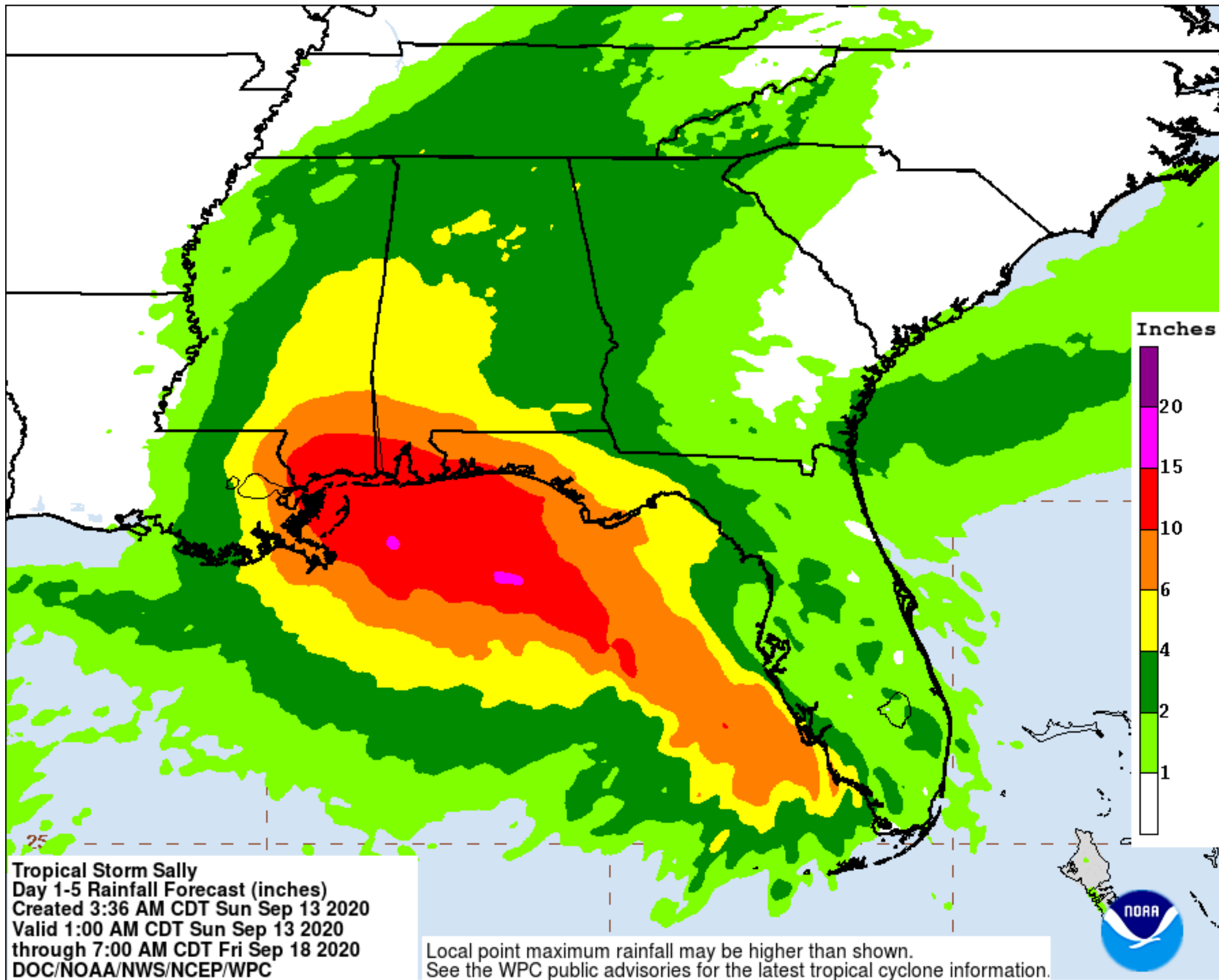
The combination of a dangerous storm surge and the tide will cause normally dry areas near the coast to be flooded by rising waters moving inland from the shoreline. The water could reach the following heights above ground somewhere within the indicated areas if the peak surge occurs at the time of high tide. The deepest water will occur along the immediate coast near the landfall location, where the surge will be accompanied by large and destructive waves. Surge-related flooding depends on the relative timing of the surge and the tidal cycle, and can vary greatly over short distances.

Expected Storm Total Rainfall and Chance of Rainfall Flooding

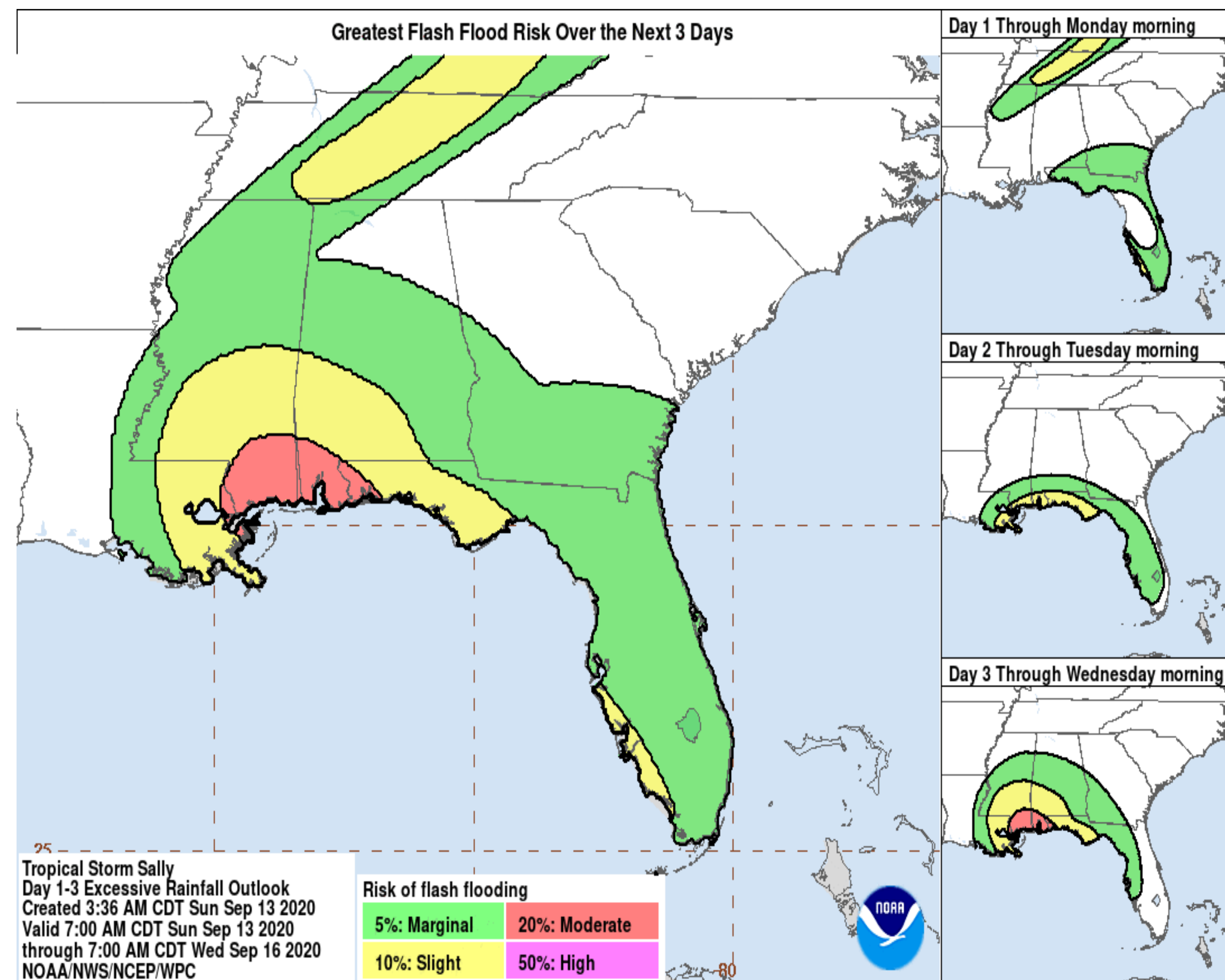


Tropical Analysis and Forecast Branch
NWS National Hurricane Center

Tropical Storm Sally



- Total rainfall in inches through Friday morning



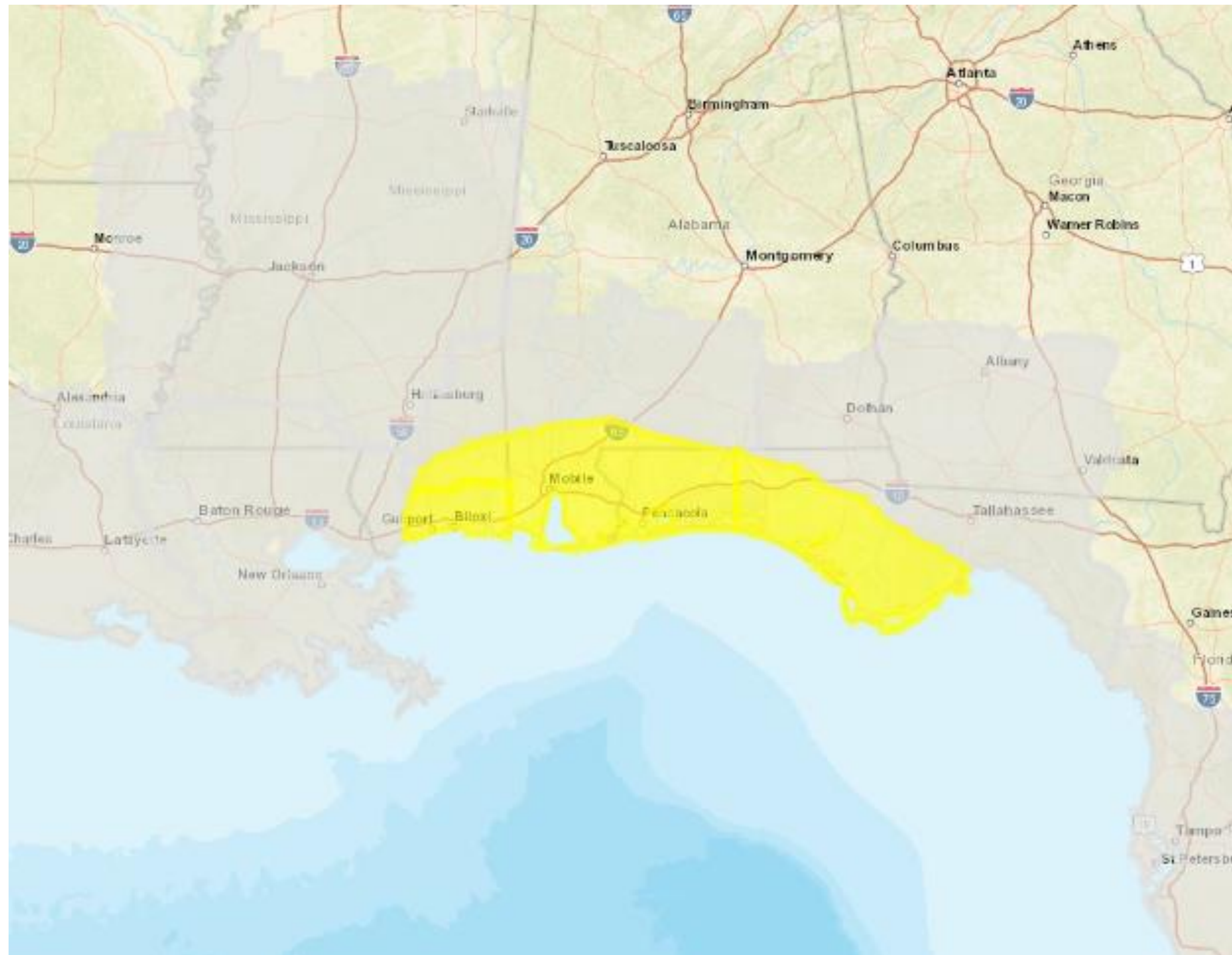
Valid through Wednesday morning

Tornado Outlook – Day 1

Tropical Storm Sally



Tropical Analysis and Forecast Branch
NWS National Hurricane Center





- Slight chance for a few tornadoes
- Valid through Wednesday morning

Key Messages

Tropical Storm Sally



Tropical Analysis and Forecast Branch
NWS National Hurricane Center



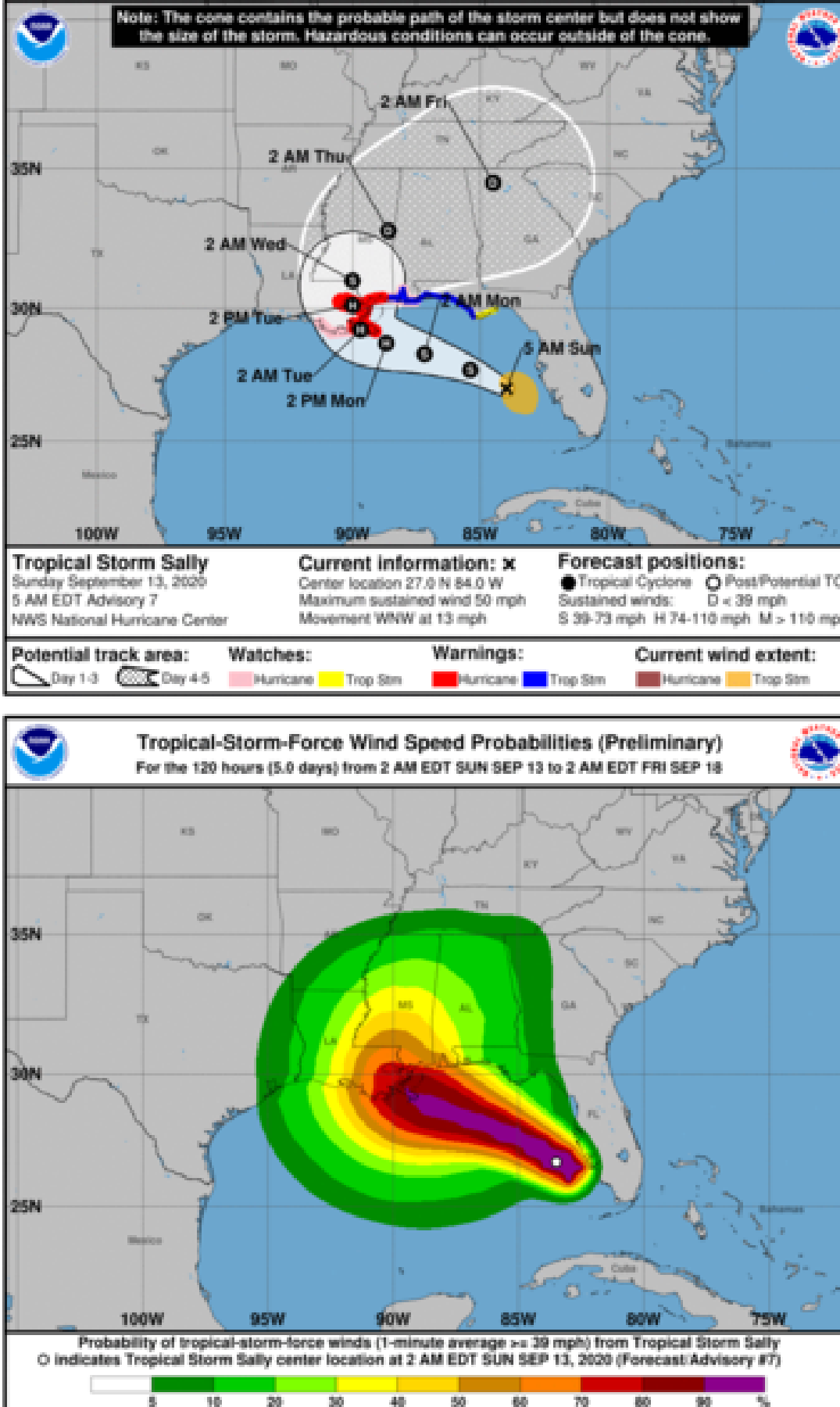
Key Messages for Tropical Storm Sally

Advisory 7: 5:00 AM EDT Sun Sep 13, 2020

1. An extremely dangerous and life-threatening storm surge is now expected, and a Storm Surge Warning is in effect for areas outside the southeastern Louisiana Hurricane and Storm Damage Risk Reduction System from Port Fourchon Louisiana to the Mississippi/Alabama border. Residents in these areas should follow any advice given by local officials.

2. Hurricane conditions are expected by early Tuesday from Grand Isle, Louisiana to Ocean Springs, Mississippi, including Metropolitan New Orleans, with tropical storm conditions likely by Monday. Preparations should be rushed to completion in those areas.

3. Tropical Storm Sally is expected to produce flash flooding across southern and central Florida and prolong existing minor river flooding across Central Florida through Monday. Significant flash flooding and minor to isolated major river flooding is likely across portions of the Central Gulf Coast from Monday through the middle of the week.



Tropical Storm Sally
Sunday September 13, 2020
5 AM EDT Advisory 7
NWS National Hurricane Center

Current information: x
Center location 27.0 N 84.0 W
Maximum sustained wind 50 mph
Movement WNW at 13 mph

Forecast positions:
● Tropical Cyclone ○ Post/Potential TC
Sustained winds: D < 39 mph
S 39-73 mph H 74-110 mph M > 110 mph

Potential track area: Day 1-3 Day 4-5
Watches: Hurricane Trop Stm
Warnings: Hurricane Trop Stm
Current wind extent: Hurricane Trop Stm

Tropical-Storm-Force Wind Speed Probabilities (Preliminary)
For the 120 hours (5.0 days) from 2 AM EDT SUN SEP 13 to 2 AM EDT FRI SEP 18

Probability of tropical-storm-force winds (1-minute average >= 39 mph) from Tropical Storm Sally
○ indicates Tropical Storm Sally center location at 2 AM EDT SUN SEP 13, 2020 (Forecast Advisory #7)

For more information go to hurricanes.gov

- **Marine Key Messages:**
- Seas to build to 25-30 ft on Monday and Tuesday in NE Gulf of Mexico
- Seas to gradually subside on Wednesday

IMPACTS FOR D8

Winds – **High**

Storm Surge – **Extreme**

Rainfall/Flash Flooding – **High**

Tornadoes – **Low**

Waves - **High**



TROPICAL STORM SALLY BRIEFING

You can contact the Tropical Analysis and Forecast Branch at
305-229-4424

*The Next Briefing Will Be:
Monday | 1:00 AM CDT*

You can always find get the latest graphics and information for this storm at www.hurricanes.gov



NHC_TAFB

www.nhc.noaa.gov